

## Child and family hub a first for Monash

**A new purpose built child and family centre will be constructed in Mulgrave to replace the ageing Wellington Kindergarten and co-located Maternal and Child Health Service.**

The new Wellington Child and Family Hub will offer two kindergarten rooms, two maternal and child health consulting rooms, two consulting rooms for specialists and a community playgroup room, all purpose built in a state-of-the-art facility.

The new building will commence construction early next year and be finalised by the end of 2021 ready for the new kindergarten year in 2022.

This is the first facility of its kind in Monash and demonstrates Council's strong commitment to improving the accessibility and quality of early childhood services in Monash.



All children currently enrolled for the 2021 year at Wellington Kindergarten have been offered a place at the Glen Waverley South Preschool. Educators from Wellington Kindergarten will also move to Glen Waverley South Preschool during construction. Wellington Preschool Inc will continue to be the management body of the kindergarten for 2021 at the Glen Waverley South Kindergarten venue.

Council and Wellington Preschool Inc are working closely together to ensure a smooth transition for children and families during the construction period.

Architects for the project from AOA Christopher Peck have created a modern and light filled design including a wall of glass looking out on a significant tree in the garden.

As part of our discussion with the children at the current Wellington Kindergarten, Council asked them to create some drawings about what they would like to see in the outdoor space. They have provided delightful and creative ideas and we are hoping to incorporate some of their ideas in the new play area.

The new Wellington Hub is expected to be completed by the end of 2021, ready for the new kindergarten year in 2022.

For more info:  9518 3555  
 [www.monash.vic.gov.au/wellington-hub](http://www.monash.vic.gov.au/wellington-hub) (to see the children's drawings, and a video of the project)



# UPDATE ON COVID-19

The State Government has announced a State of Disaster, for six weeks until 13 September.

This gives police additional powers to make sure people are complying with public health directions.

A curfew is also in place from 8pm until 5am every day for six weeks (until 13 September). The only reason to be outside your home during the curfew is if you are getting care, giving care or going to and from work if required to do so. A 5km boundary is also in place around your home which you must stay within.

Stage 4 restrictions have been announced (until 13 September) that require Council to make changes to our services.

## Aged Care & Meals on Wheels



These services are continuing following strict hygiene and social distancing measures. Meals on Wheels are delivered to the door only.

## Customer Service

Our service centres at the Monash Civic Centre (293 Springvale Road, Glen Waverley) and the Oakleigh Service Centre (3 Atherton Road, Oakleigh) are closed to the public. Please contact us using phone, email and online: ☎ 9518 3555  
✉ mail@monash.vic.gov.au  
🌐 www.monash.vic.gov.au (webchat)



## Kerbside bin collection



Bins are still being collected. Place your bins out the night before your collection day, make sure the bin is not overfilled and the lid closed.

**Please note:** This information was up to date at the time of going to print. Please refer to our website for more recent updates. See page 8 for information on local support services.

Wear a face covering or mask

Stay 1.5 metres apart  
AT ALL TIMES



## Waste Transfer Station



The Waste Transfer Station is now closed to the general public. Only commercial trades can visit the facility and only from 7.30am until noon Monday to Saturday. The WTS will be closed on Sundays.

## Immunisation

All community immunisation sessions need to be booked online at Trybooking - Monash Immunisation Sessions.



One adult can accompany their child/ children to the immunisation session.

☎ 9518 3534 ✉ immunisation@monash.vic.gov.au or the Maternal Child Health central booking number on ☎ 9518 3662.

## Council updates

We will continue to provide frequent updates via:

📱 @cityofmonash 🐦 @MonashCouncil  
Sign up for our eNewsletter

## Closed

All library branches (Clayton, Oakleigh, Glen Waverley, Mount Waverley, Wheelers Hill and Mulgrave). Some online services including video storytime and ebooks are available. 🌐 www.monlib.vic.gov.au



Monash Gallery of Art, Aquatic and Recreation Centres, Monash Youth Services.

All playgrounds, tennis facilities, golf courses, skate parks, fitness stations, table tennis tables, bouldering walls, BBQs and drinking fountains.

## Monash Civic Centre (Closed)

📍 293 Springvale Road, Glen Waverley

## Oakleigh Service Centre (Closed)

📍 3 Atherton Road, Oakleigh

☎ 9518 3555 ✉ mail@monash.vic.gov.au 🌐 www.monash.vic.gov.au  
**National Relay Service** (for the hearing and speech impaired) 1800 555 660

We welcome your feedback about the Monash Bulletin:  
☎ 9518 3678  
✉ joanne.robertson@monash.vic.gov.au

## Language Assist

普通话 9321 5485  
Ελληνικά 9321 5482  
廣東話 9321 5481  
සිංහල 7005 3002

Italiano 9321 5483  
हिंदी 7005 3000  
Việt Ngữ 9321 5487  
தமிழ் 7005 3003

한국어 9321 5484  
Bahasa Indonesia 7005 3001



# MESSAGE FROM Mayor Stuart James

This is without doubt the hardest column I have written as your Mayor. No-one could have predicted when COVID-19 first hit that we would now find ourselves in a situation where we can only venture within a 5km radius of our homes, that a strict curfew would lock us in from 8pm, businesses and services would be closed and that our dynamic, bustling and thriving communities would be silenced by this pandemic.

But this is where we find ourselves and that is why each and every one of us must do what is required to get our city and our state back on

track. Monash is not immune to this virus, we are experiencing cases every day of people contracting coronavirus and we need to lock ourselves down to prevent any further spread. As I am writing this, Stage 4 restrictions have just begun and we are all adjusting to the change. I know this about Victorians – we do not quit. When we have been up against terrible circumstances of fire, floods, heartache and horror in the past we have stood side by side to make it better, to make things right. We have fought whatever needed to be fought and we have come

through together. We need to draw on that collective spirit again and we need to have hope that we will get through this, we will recover, we will rebuild and we will resume our lives. Things will not be the same, a crisis like this will leave scars but we must have hope that our resilience and our compassion will lead us to recovery.

Please know that Council will continue to support you and provide the services you need, whether it's those critical services in person as allowed or by phone or email. We are still here, working to support you however we can. We have a number of support services in place for those who are struggling emotionally or financially. Please reach out for that assistance, we really are here to help you. You can find more information inside the pages of the Bulletin.

I am also posting a daily update which includes information specific to Monash, along with useful links, on my Facebook page. In the meantime, wear your masks (Zoe and April love their Frozen ones), stay strong and safe, look out for each other and please follow all the requirements always and every day, until we get to the other side.

Facebook: @crstuartjames or follow me on Instagram: @crstuartjames and join me on the journey.



## NEXT COUNCIL Meeting

The next Council Meeting will be held on **Tuesday 25 August** from 7pm via Zoom. The meeting's agenda will be published on Council's website from 5.30pm on **Thursday 20 August**. Monash residents and ratepayers can ask questions at the meeting, with questions to be submitted to Council by 2pm on Tuesday 25 August.

Under the restrictions introduced by the State Government to slow the spread of Coronavirus, Council meetings will not be open to the public to attend. However, the meeting remains a public meeting with the community able to watch via our livestreaming service at [webcast.monash.vic.gov.au](http://webcast.monash.vic.gov.au)

During this time the Mayor will act as the representative in reading out any public questions and providing a response over the livestream. A written response will also be provided.

[www.monash.vic.gov.au/meetings](http://www.monash.vic.gov.au/meetings)  
9518 3555

## SIGN YOUR SMILE to connect

**Smiling is an important way that we connect with people.**

While we wear our masks or face coverings to slow the spread of COVID-19 and to keep ourselves and our community safe, we're missing the connection we normally share. So we're encouraging our community to Sign Your Smile instead as a way to stay connected.

Simply use your index finger and thumb to create

a 'tick' in front of your mouth, which is the AUSLAN sign for smile.

Join the campaign today and post a photo of you in your mask, signing your smile! And use #SignYourSmile #ThisIsMonash



# SIGN YOUR Smile

# EXCELLENT RESULTS

## in community satisfaction survey

**Monash Council has recorded an excellent result of 75 for overall satisfaction in the annual Community Satisfaction Survey, our highest ever score.**

Whilst the results of all Councils are not yet compiled, the score of 75 has Monash recording the highest level of satisfaction so far amongst metropolitan Councils.

**High scores were also achieved for community satisfaction with Council's governance and leadership, averaging a score of 73 for five key aspects:**

- » Maintaining trust & confidence of the local community (74)
- » Community engagement & consultation (73)
- » Making decisions in the interest of the community (73)
- » Responsiveness to local community needs (73) and
- » Representation, lobbying & advocacy on behalf of community (73).

This year's Community Satisfaction Survey began in March 2020 as a doorknock survey just prior to the

first COVID-19 lockdown. The survey was postponed and recommenced in May 2020 as a telephone survey, with final results provided in late June. The research was again undertaken by independent research company Metropolis Research Pty Ltd, with 800 randomly selected residents aged 15 years and over. The survey sample reflects the cultural and linguistic diversity of our community with 44% of respondents speaking a language other than English at home.

The survey provides valuable information to Council about what Council services are working and where further improvements can be made.

These are outstanding results at a challenging time for our community and give us confidence that our critical services and programs are valued and supported by the community, and that we are on the right track with how we are supporting the community and providing the services they value.

The survey also asks about satisfaction with and the importance of 29 specific Council services and facilities. The highest



community satisfaction across these areas continues to be with our local libraries & library services (86), our rubbish collection (88), green waste collection (87), recycling service (86), the Waste Transfer Station (83) and Sporting Ovals and Outdoor Sport Facilities (81).

A number of issues including parking, traffic management and development were identified as needing attention but several reported less significant scores of dissatisfaction compared with the previous year.

Council also asked three COVID-19 questions relating to how households were coping. On average, households were relatively positive in terms of how well they were coping with the impacts of COVID-19. These results were taken shortly after the first period of lockdown.

For more info: 📞 9518 3678  
🌐 [www.monash.vic.gov.au/our-performance](http://www.monash.vic.gov.au/our-performance)

## COMMUNITY CONNECTOR supporting you

**If you are feeling lonely or disconnected from your usual social support network due to COVID-19, you can receive support from the Australian Red Cross and local community organisations with just one phone call.**

The Victoria COVID-19 hotline has expanded to provide emotional support to people feeling isolated and vulnerable. Call the COVID-19 hotline (1800 675 398) and select "option three", to be connected to an Australian Red Cross volunteer trained to help callers who may be feeling distressed or anxious about COVID-19.

They are available to talk with you, provide a friendly ear and identify your support needs.

The Australian Red Cross will then link you in with local support and information by referring you to Monash Council through the Community Connector. The Community Connector is someone who can help you connect with local services and social support that suit your needs and interests.

Community Connector can assist people to find local, practical support and join in with social activities, such as video chats, online book and film clubs or fitness groups.

The Monash community has a strong reputation for looking out for others in difficult times. As part of the Community Connector program, Monash Council will also be reaching out to local community organisations and support agencies to partner with them on initiatives to bring the

community together and support our residents through COVID-19.

For specific assistance for Seniors, a Social Support Hub has been set up at the Victorian Government's Seniors Online website as a way to help stay connected and participate in social activities during the pandemic:

🌐 [seniorsonline.vic.gov.au](http://seniorsonline.vic.gov.au)

You can find out what services and activities are available via the Hub. The Hub will be regularly updated with information and links to other community based organisations offering support and activities to older Victorians, including information about phone line support and local community connectors.

Residents can contact the Monash Community Connector directly on 📞 9518 3555



# MONASH HEADSPACE

to open in October

**A long-awaited headspace facility to support young people to access mental health support in Monash will open in October 2020.**

A consortium led by Alfred Health and including Monash Youth Services, Taskforce, Odyssey, Access Employment, St Kilda Football Club, Gateway LLEN and Holmesglen TAFE will deliver the headspace service. The provider was chosen in a competitive tender process by the Eastern Melbourne Primary Health Network (EMPHN). A location for the facility is expected to be announced shortly.

Headspace Monash will support young people aged 12 to 25 years seeking mental health support and assistance with health, alcohol and drug issues.

Specialist support for youth mental health is vital, especially in this current time of COVID-19. We know from talking to young people and our campaign for a headspace that mental health issues are a significant concern.

The impacts of the pandemic have amplified the need for mental health services close to home. headspace is a recognised and trusted service for young people and we are excited and relieved that we will have the service in Monash.

The opening of headspace follows a strong advocacy campaign led by the young people on the Monash Youth Committee and their powerful #RaiseYourHand4MonashYouth campaign. The service is funded by the Australian Government under the Primary Health Networks (PHN) program.

For more info: ☎ 9518 3908

🌐 [www.monash.vic.gov.au/headspace](http://www.monash.vic.gov.au/headspace)



## BRINE STREET CHILD CARE'S new look

**Our Brine Street Child Care Centre and Kindergarten in Hughesdale has a new and improved look including a library for families, staff room facilities and a bright and welcoming entrance.**

The Centre's children and families were an integral part of this project. It began with a vision to create a library after the success of a program where books could be borrowed by children to read at bedtime.

The project proved a great education opportunity for the children who, along with staff, delivered letters earlier this year around

the neighbourhood to let residents know that works were starting.

The Centre provides an education and care program for up to 67 children per day delivered by up to 19 Council staff. Some of these children participate in the Federal Government funded four-year-old kindergarten program.

The project was a collaboration between teams from Children, Youth and Family Services, City Design and Capital Works.

For more info: ☎ 9579 0903  
🌐 [www.monash.vic.gov.au/Services/Children-Family](http://www.monash.vic.gov.au/Services/Children-Family)

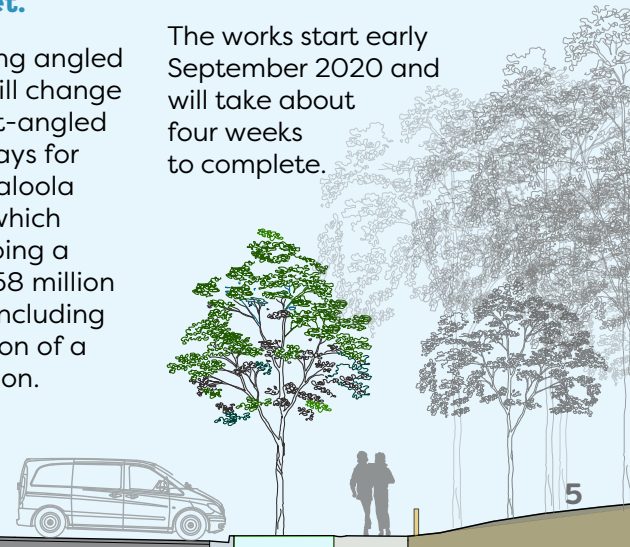
## WORKS HAPPENING in Oakleigh

**As part of the upgrade of Caloola Reserve, works will start next month in Drummond Street to increase the number of parking spaces in the street.**

The existing angled parking will change to 35 right-angled parking bays for users of Caloola Reserve, which is undergoing a major \$3.58 million upgrade including construction of a new pavilion.

By increasing the on-street parking we have been able to keep open space for the community's use, rather than reducing it to build a carpark. The works include the planting of 13 trees.

The works start early September 2020 and will take about four weeks to complete.





# COUNCILLOR NEWS

## Cr Shane McCluskey

My last Councillor column was last year, near the end of my Mayoral term and much has changed. At that time I shared, along with some of our Youth Ambassadors (pictured above before COVID-19) the fantastic news that Monash was to receive a dedicated headspace, catering for the mental health needs of our youth. A location will be announced soon.

I chose this photo for a specific reason. We often hear of resilience being an important trait for us all to develop. In a global pandemic and State of Disaster that resilience has been tested in the most stoic of people. We rightly thank those community members working in essential roles in order to combat this virus with incredible bravery and self-sacrifice.

But what of our children and youth? We should acknowledge and thank them too. Their worlds have been turned upside down. No time spent with a classroom of peers and friends or the lunchtime interactions at school. The benefit to their general health and well-being associated with team sport, group activities, swimming lessons, a birthday party or even a hug and kiss from a family member outside of their home is now missing. It's important we check in on our young people in a genuine way and help them. Much is asked of them at the moment. They too are brave in trying to process their thoughts and emotions. All of us being in this together includes our kids.

Our Youth and Family Service team can help on [9518 3908](tel:95183908) or [YRCR@monash.vic.gov.au](mailto:YRCR@monash.vic.gov.au)

The Monash community has been amazing in its understanding and support for the changes we've had to make to comply with COVID-19 restrictions. It has been heartening to walk the streets of the Mulgrave Ward and witness the many projects continuing such as the Brentwood Reserve pavilion, street tree pruning, local area traffic management works and the Waverley Archery Modular facility at Freeway Reserve, as planning progresses for a state-of-the-art Wellington Community Hub in Mulgrave and the redevelopment of Mulgrave Reserve.

The last four years as a Councillor have passed quickly. Council elections are to be held in October and Council will move to 'caretaker mode' on September 22. This term of Council has seen just two female Councillors out of 11 Councillors. Hopefully we will see more women in this election. It is an honour to be elected to represent your community and I hope to have that opportunity again. I encourage anyone with a keen interest in community representation to consider nominating.

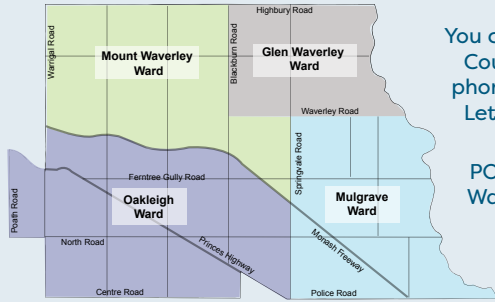
Stay well and let's all continue to do what we can to return us to the 'new normal'.

Feel free to contact me on: [0466 345 406](tel:0466345406)

[shane.mccluskey@monash.vic.gov.au](mailto:shane.mccluskey@monash.vic.gov.au)

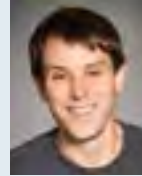
[crshaneclluskey](https://www.facebook.com/crshaneclluskey)

# YOUR Councillors



You can contact Councillors via phone or email. Letters can be mailed to: PO Box 1, Glen Waverley 3150

## Glen Waverley Ward



**Cr Geoff Lake**  
0411 645 281  
[Geoff.Lake@monash.vic.gov.au](mailto:Geoff.Lake@monash.vic.gov.au)



**Cr Lynnette Saloumi**  
0466 465 355  
[Lynnette.Saloumi@monash.vic.gov.au](mailto:Lynnette.Saloumi@monash.vic.gov.au)

## Mount Waverley Ward



**Cr Brian Little**  
0407 878 033  
[Brian.Little@monash.vic.gov.au](mailto:Brian.Little@monash.vic.gov.au)



**Cr Rebecca Paterson**  
0437 959 163  
[Rebecca.Paterson@monash.vic.gov.au](mailto:Rebecca.Paterson@monash.vic.gov.au)



**Cr MT Pang Tsoi**  
**Deputy Mayor**  
0466 465 376  
[MTTang.Tsoi@monash.vic.gov.au](mailto:MTTang.Tsoi@monash.vic.gov.au)

## Mulgrave Ward



**Cr Robert Davies**  
0416 000 777  
[Robert.Davies@monash.vic.gov.au](mailto:Robert.Davies@monash.vic.gov.au)

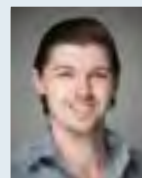


**Cr Paul Klisaris**  
0412 516 026  
[Paul.Klisaris@monash.vic.gov.au](mailto:Paul.Klisaris@monash.vic.gov.au)



**Cr Shane McCluskey**  
0466 345 406  
[Shane.McCluskey@monash.vic.gov.au](mailto:Shane.McCluskey@monash.vic.gov.au)

## Oakleigh Ward



**Cr Josh Fergeus**  
0466 465 421  
[Josh.Fergeus@monash.vic.gov.au](mailto:Josh.Fergeus@monash.vic.gov.au)



**Cr Stuart James**  
**Mayor**  
9518 3524 / 0413 184 250  
[Stuart.James@monash.vic.gov.au](mailto:Stuart.James@monash.vic.gov.au)



**Cr Theo Zographos**  
0430 316 911  
[Theo.Zographos@monash.vic.gov.au](mailto:Theo.Zographos@monash.vic.gov.au)

# NATIONAL TREE DAY

## celebrating our local trees

**Our local trees are being appreciated more than ever as we spend increased time at home and in our local neighbourhoods.**

National Tree Day is usually celebrated by thousands of our community attending a series of community planting events, which unfortunately have been cancelled this year due to COVID-19.

Despite missing the community involvement, Council's Horticulture team has continued planting in our streets, parks and reserves. During the 2019/20 financial year we have planted 10,903 trees (including 2,494 street trees), 26,526 shrubs and 88,886 groundcovers.

The team has also been joined by Working for Victoria staff redeployed from other industries to help with planting and vegetation maintenance until the end of the year.

Our tree planting on Council land helps us work towards our target to increase tree canopy to 30%. We hope the community helps us to reach this target by also planting on private property. A greater tree canopy has many health, wellbeing and environmental benefits such as removing pollutants from the air, cooling our air and providing shade in summer, reducing storm water flooding, reducing greenhouse gases and increasing property values. Residents tell us the trees are one of the things they love about living in Monash.

For National Tree Day let's celebrate what you love about the beautiful and significant trees we have in Monash. Take a photo and tell us what you like about a tree and send your photo and story to [sustainability@monash.vic.gov.au](mailto:sustainability@monash.vic.gov.au) Every tree photo shared will receive a voucher for 20 seedlings to the indigenous plant nursery for pickup when restrictions ease.

For more info: [9518 3555](tel:95183555)



# SOCIAL HOUSING

## framework consultation

**The Monash Social Housing Framework 2020–2025 (draft) is the first social housing framework for Monash. It is one of three key documents demonstrating Council's commitment to addressing homelessness and the housing affordability crisis alongside the draft Affordable Housing Strategy and the Regional Local Government Charter Homelessness and Social Housing.**

Victoria has a homelessness and housing affordability crisis, made more acute by COVID-19 and the 2019/20 bushfires.

The Monash Social Housing Framework 2020-2025 (draft) guides Council's efforts to address homelessness and influence an increase to the supply of social housing. The framework was developed after interviews with people with lived experiences of homelessness and consultation with advisory committees and community agencies.

At the time of the 2016 census, Monash had 755 people recorded as homeless, the highest number of people recorded in the Eastern metropolitan region. Currently 32% of Victorians without a home live in Eastern and Southern Melbourne.

The most powerful action local governments can undertake to reduce



homelessness is to support the delivery of homes that people can afford. For the lowest income households most vulnerable to homelessness, this means the provision of social housing.

Social housing refers to housing owned either by the State Government or by non-profit community housing providers that is rented to low income households at either 25% (public housing) or 30% (community housing) of household income. Social housing does not generally include crisis or rooming houses.

Homelessness is more likely to affect certain vulnerable groups within our community, including people experiencing family violence, asylum seekers and refugees, young people, Indigenous Australians, people who identify as LGBTIQ and older people, particularly women.

**Have your say on the framework until 31 August:**

[9518 3555](tel:95183555)

[www.monash.vic.gov.au/social-housing](http://www.monash.vic.gov.au/social-housing)

# SUPPORT services

## Victorian Government Emergency Relief

☎ 1800 657 398  
🌐 [www.dhhs.vic.gov.au/victorian-public-coronavirus-disease-covid-19#emergency-relief-packages](http://www.dhhs.vic.gov.au/victorian-public-coronavirus-disease-covid-19#emergency-relief-packages)

## Monash Oakleigh Community Support and Information Service

25 Downing St, Oakleigh (Mon-Fri: 10am-1pm)  
☎ 9568 4533  
✉ [admin@mocsis.org.au](mailto:admin@mocsis.org.au)  
🌐 [www.mocsis.org.au](http://www.mocsis.org.au)

## Waverley Community Information and Support Service

☎ 9807 9844 or 9807 5996 (Mon, Wed & Fri 10am-1pm)  
✉ [wavcis@bigpond.com](mailto:wavcis@bigpond.com)  
🌐 [www.monashwaverleycis.org.au](http://www.monashwaverleycis.org.au)

## CRISIS HOUSING

Contact Emily Ashton at Monash Council on ☎ 0488 601 051  
✉ [emily.ashton@monash.vic.gov.au](mailto:emily.ashton@monash.vic.gov.au)

## Crisis After Hours

☎ 1800 825 955

## Uniting Harrison

(Suburb: Mulgrave)  
321 Ferntree Gully Rd, Mount Waverley ☎ 1300 277 478

## Community Housing Limited

(Suburbs: Glen Waverley, Wheelers Hill & Burwood)  
19-23 Prospect St, Box Hill  
☎ 1300 245 468

## Salvo Care

(Remaining Monash Suburbs)  
317 High St, Kew

## AT RISK OF HOMELESSNESS

Salvo Care ☎ 9853 5680

## Uniting Harrisons

☎ 1300 277 478

# COMMUNITY GRANTS update

**In the July Bulletin some of the figures for the Community Grants Program 2020/21 allocations were incorrect.**

**The correct figures are as follows:**

» Arts and Cultural Projects - \$90,102.83

- » Community Events - \$49,883.45
- » Community Strengthening - \$357,684.29
- » Neighbourhood Houses - \$475,366.81
- » Positive Ageing - \$745,823.71

For more info: ☎ 9518 3555

# COMMUNITY CARE Blanket project

**The COVID-19 pandemic has caused unprecedented challenges for our community, especially those who rely on Council's programs and outings.**

Like many other activities, Council's social inclusion programs for older people were suspended in March and the team had to change the way it interacted with participants, moving from in-person contact to phone calls, newsletters and activity packs people could do at home.

Another initiative is the Community Care Blanket project where some of our participants from social inclusion and Positive Ageing Lifestyle (PALS) programs and our Monash volunteer team knitted squares to be stitched together to make blankets for at risk residents in the community. Many also donated wool for the project and from April to June, enough squares were knitted to make around 30 blankets, scarves and hats.

This project enables participants to stay engaged and feel connected, even though they aren't able to meet with others in person, and create a gift for people in need in our community.

For more info: ☎ 9518 3555 (Social inclusion team)



*Amy and Lori from our Social Inclusion team*