

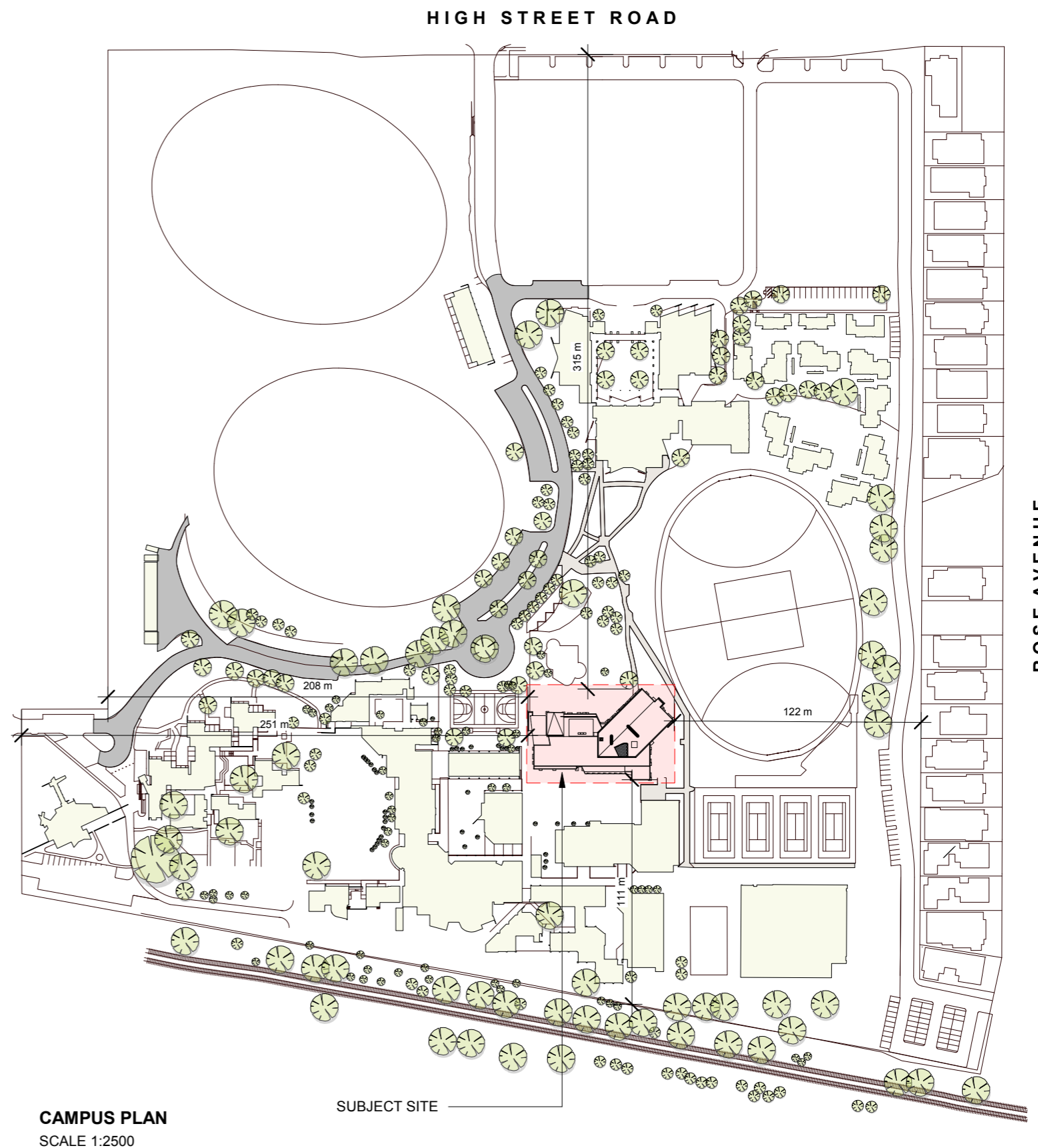




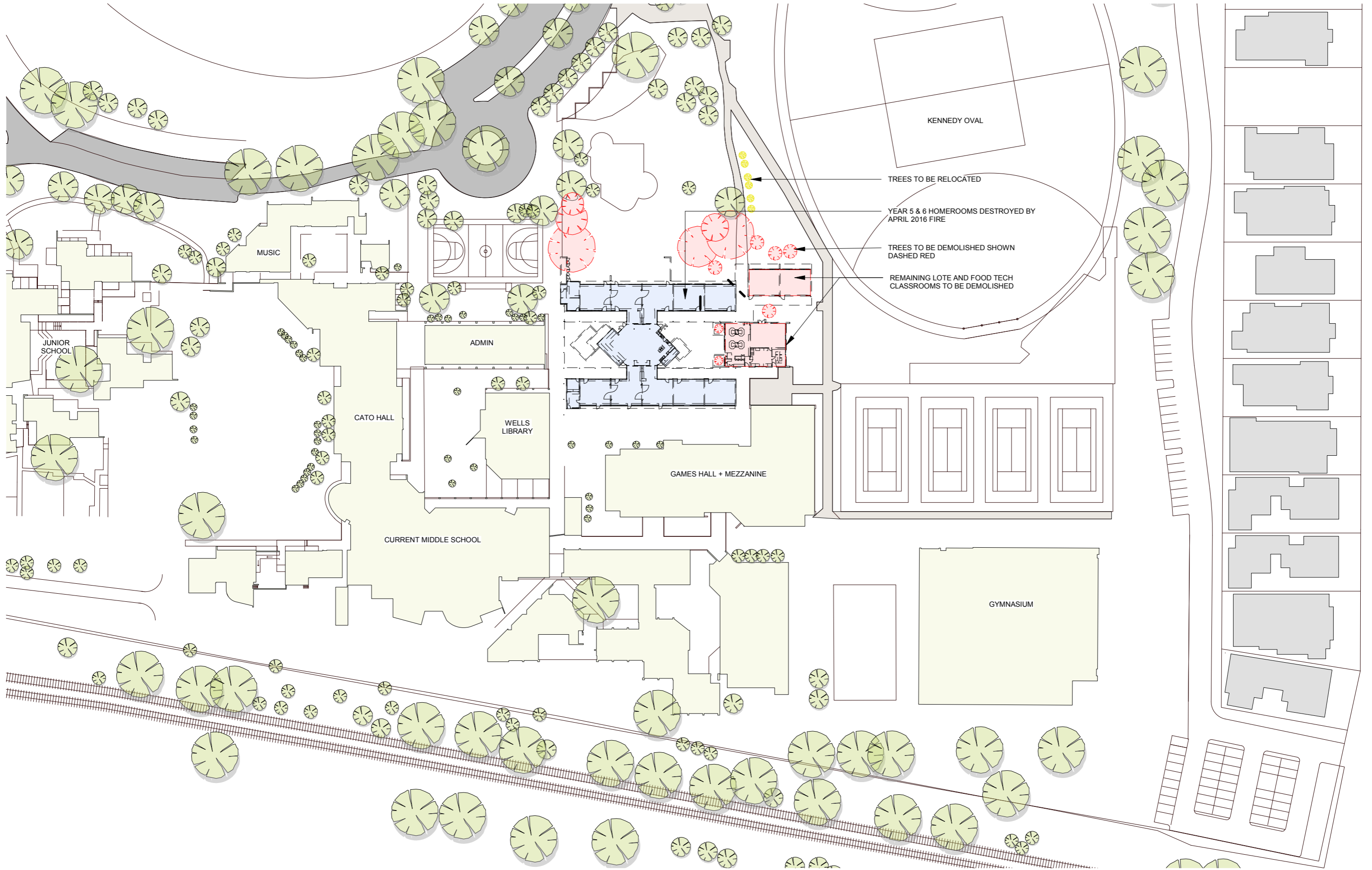
# WESLEY COLLEGE NEW MIDDLE SCHOOL

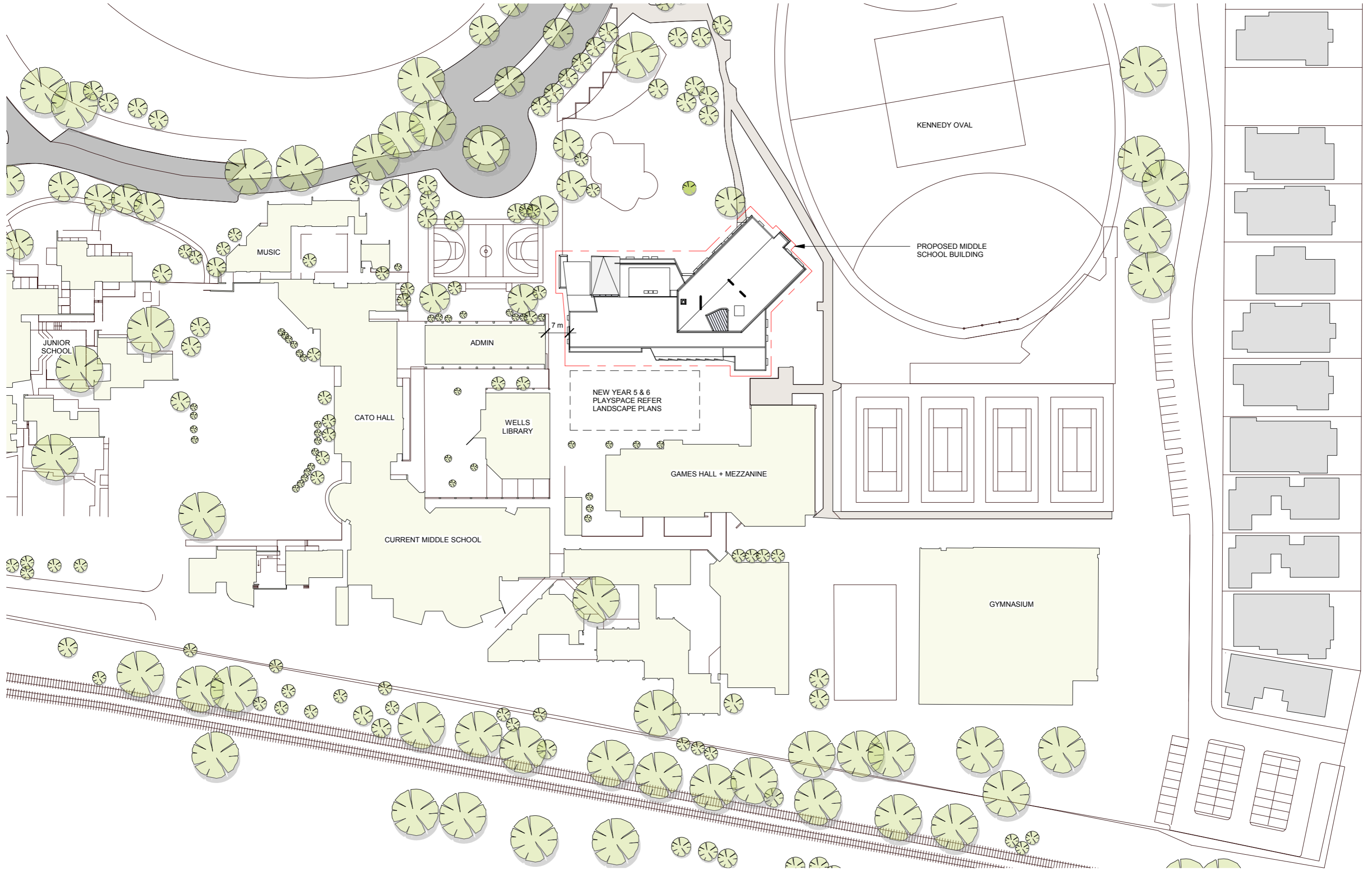
618-668 HIGH STREET ROAD GLEN WAVERLEY  
316047.00

SHEET No.	SHEET NAME	Current Revision
A-00-00	COVER PAGE	A
A-01-00	COVER SHEET - DRAWING INDEX	A
A-11-00	PRE-FIRE SITE PLAN	A
A-11-01	SITE PLAN - PROPOSED	A
A-21-00	GROUND FLOOR PLAN	A
A-21-01	LEVEL 1 PLAN	A
A-21-02	LEVEL 2 PLAN	A
A-21-03	ROOF PLAN	A
A-30-01	NORTH ELEVATION	A
A-30-02	EAST ELEVATION	A
A-30-03	SOUTH ELEVATION	A
A-30-04	WEST ELEVATION	A
A-40-00	SECTIONS	A



**CAMPUS PLAN**  
SCALE 1:2500





Project:  
**WESLEY COLLEGE NEW MIDDLE SCHOOL**

Drawing Title:  
**SITE PLAN - PROPOSED**

Drawing Number:  
**A-11-01**

Revision:  
**A**

Date:  
**25.08.2017**

Scale:  
**1 : 1000 @ A3**

**Cox Architecture**  
Level 2, 167 Flinders Lane,  
Melbourne, VIC 3000, Australia  
T + 61 3 9650 3288  
F + 61 3 9650 2747  
www.coxarchitecture.com.au





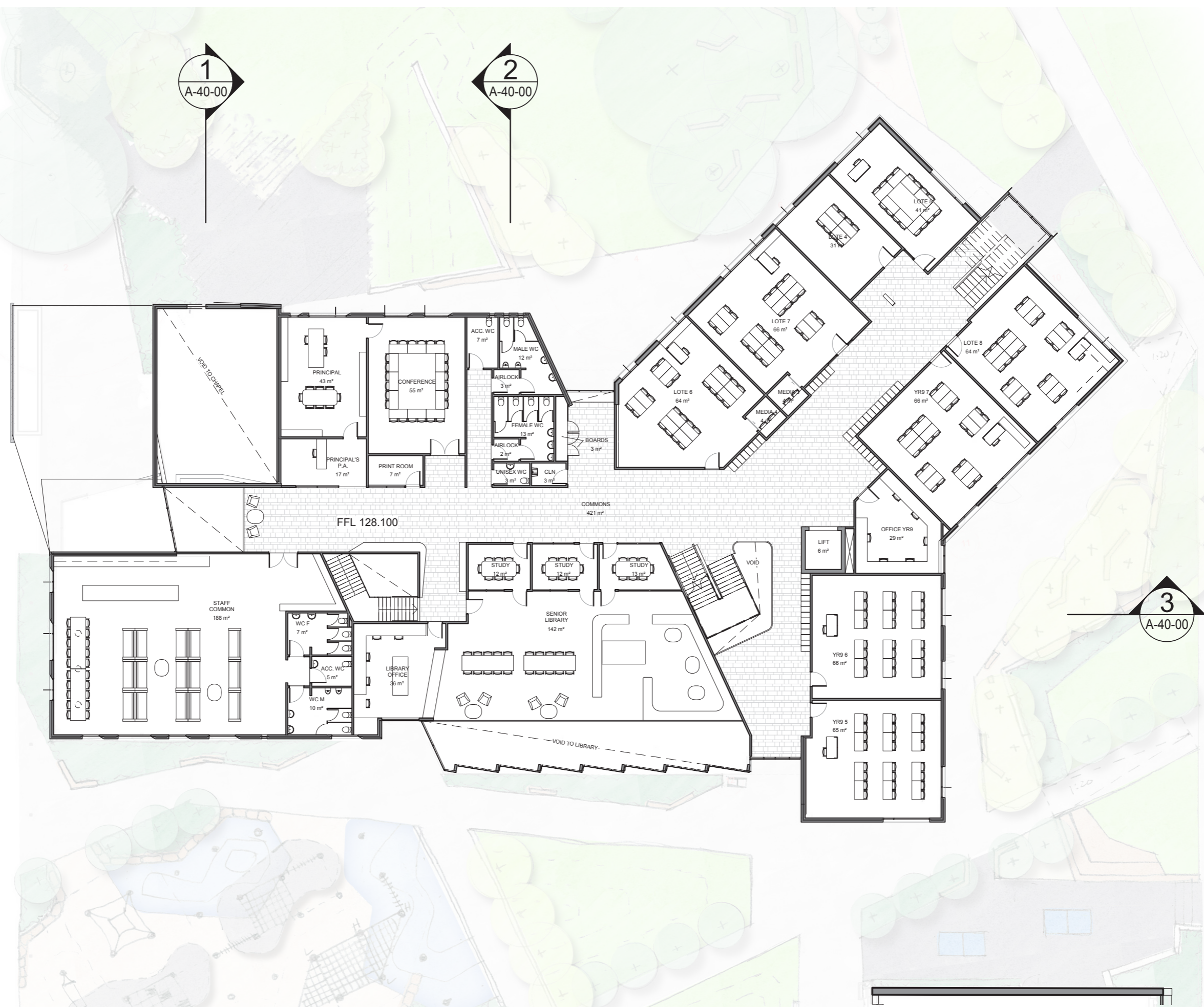


1  
A-40-00

2  
A-40-00

3  
A-40-00



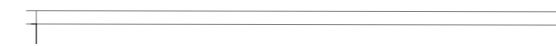
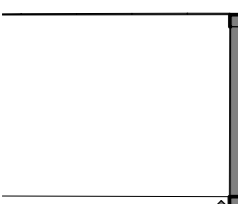
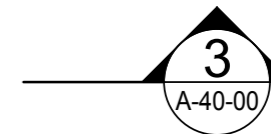


1  
A-40-00

2  
A-40-00

3  
A-40-00



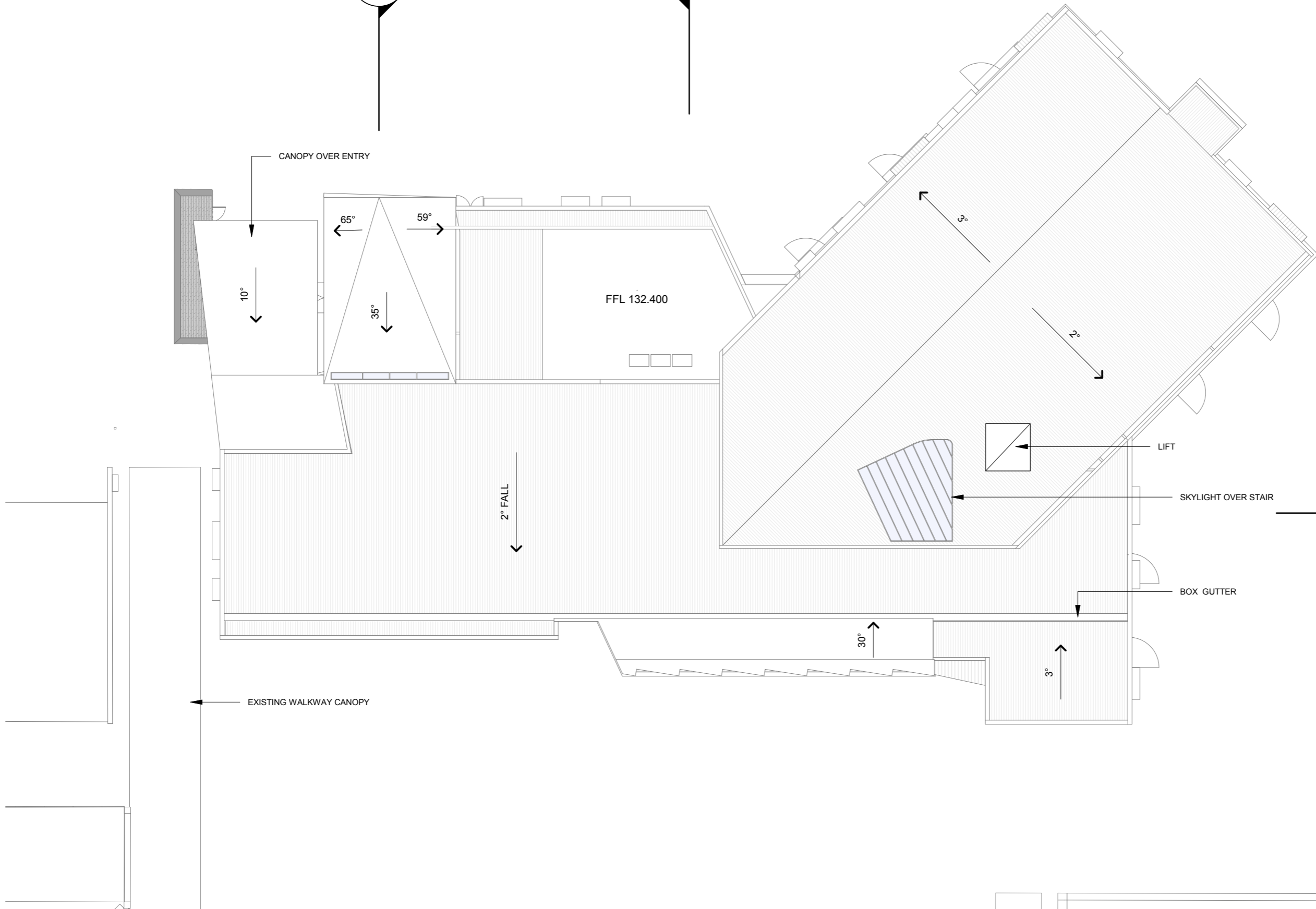




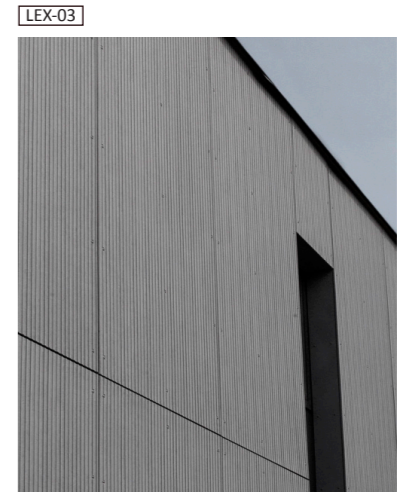
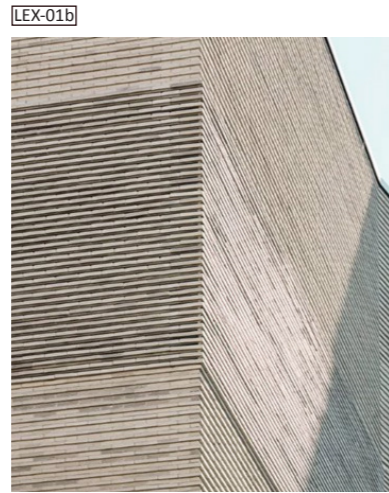
1  
A-40-00

2  
A-40-00

3  
A-40-00







**CODE DESCRIPTION**

GLA-01	CLEAR GLASS	RWG-01	METAL RAINWATER GOODS – COLORBOND - CHARCOAL
GLA-02	COLOUR TINTED GLASS	RWG-02	METAL RAINWATER GOODS – STAINLESS STEEL GUTTER
GLA-03	GLASS ROOF / CANOPY- FRITTED	RFS-01	METAL ROOF DECK - COLOUR 1
LEX-01a	EXTERNAL CLADDING - BRICK TYPE 1	STL-01	FABRICATED STEEL – PNT-01 FINISH
LEX-01b	EXTERNAL CLADDING - PATTERNED BRICK	AGF-01	ALUMINIUM GLAZING FRAME
LEX-02	EXTERNAL CLADDING - METAL STANDING SEAM	PAV-01	CONCRETE PAVING SLAB
LEX-03	EXTERNAL CLADDING - CEMENT SHEET	PAV-02a	CONCRETE PAVERS (NOM URBANSTONE) COLOUR 1
RWG-01	METAL RAINWATER GOODS – COLORBOND - CHARCOAL	PAV-02b	CONCRETE PAVERS (NOM URBANSTONE) COLOUR 2
MSS-01	METAL MESH SHADING SCREEN - NOM LOCKER GROUP	PNT-01	PAINT – MIO SYSTEM METALLIC BLACK
		TMB-01	LAMINATED TIMBER STRUCTURE





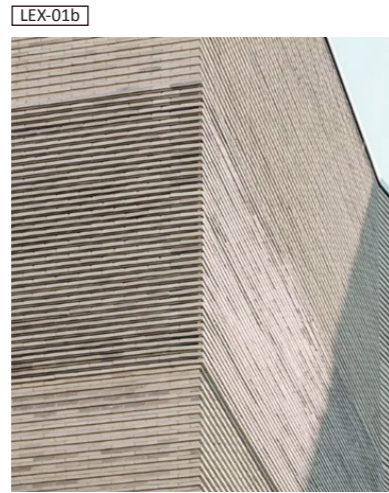


**CODE DESCRIPTION**

GLA-01	CLEAR GLASS	RWG-01	METAL RAINWATER GOODS – COLORBOND - CHARCOAL
GLA-02	COLOUR TINTED GLASS	RWG-02	METAL RAINWATER GOODS – STAINLESS STEEL GUTTER
GLA-03	GLASS ROOF / CANOPY- FRITTED	RFS-01	METAL ROOF DECK - COLOUR 1
LEX-01a	EXTERNAL CLADDING - BRICK TYPE 1	STL-01	FABRICATED STEEL – PNT-01 FINISH
LEX-01b	EXTERNAL CLADDING - PATTERNED BRICK	AGF-01	ALUMINIUM GLAZING FRAME
LEX-02	EXTERNAL CLADDING - METAL STANDING SEAM	PAV-01	CONCRETE PAVING SLAB
LEX-03	EXTERNAL CLADDING - CEMENT SHEET	PAV-02a	CONCRETE PAVERS (NOM URBANSTONE) COLOUR 1
RWG-01	METAL RAINWATER GOODS – COLORBOND - CHARCOAL	PAV-02b	CONCRETE PAVERS (NOM URBANSTONE) COLOUR 2
MSS-01	METAL MESH SHADING SCREEN - NOM LOCKER GROUP	PNT-01	PAINT – MIO SYSTEM METALLIC BLACK
		TMB-01	LAMINATED TIMBER STRUCTURE

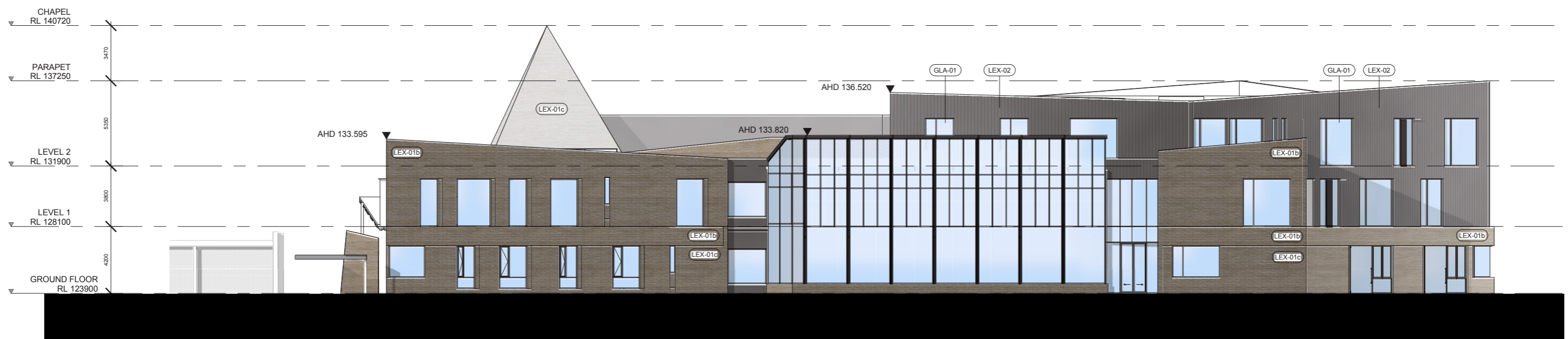






**CODE DESCRIPTION**

GLA-01	CLEAR GLASS	RWG-01	METAL RAINWATER GOODS – COLORBOND - CHARCOAL
GLA-02	COLOUR TINTED GLASS	RWG-02	METAL RAINWATER GOODS – STAINLESS STEEL GUTTER
GLA-03	GLASS ROOF / CANOPY- FRITTED	RFS-01	METAL ROOF DECK - COLOUR 1
LEX-01a	EXTERNAL CLADDING - BRICK TYPE 1	STL-01	FABRICATED STEEL – PNT-01 FINISH
LEX-01b	EXTERNAL CLADDING - PATTERNED BRICK	AGF-01	ALUMINIUM GLAZING FRAME
LEX-01c	EXTERNAL CLADDING - METAL STANDING SEAM	PAV-01	CONCRETE PAVING SLAB
LEX-02	EXTERNAL CLADDING - CEMENT SHEET	PAV-02a	CONCRETE PAVERS (NOM URBANSTONE) COLOUR 1
RWG-01	METAL RAINWATER GOODS – COLORBOND - CHARCOAL	PAV-02b	CONCRETE PAVERS (NOM URBANSTONE) COLOUR 2
MSS-01	METAL MESH SHADING SCREEN - NOM LOCKER GROUP	PNT-01	PAINT – MIO SYSTEM METALLIC BLACK
		TMB-01	LAMINATED TIMBER STRUCTURE



Project:

**WESLEY COLLEGE NEW MIDDLE SCHOOL**

Drawing Title:

**SOUTH ELEVATION**

Drawing Number:

**A-30-03**

Revision:

**A**

Date:

**25.08.2017**

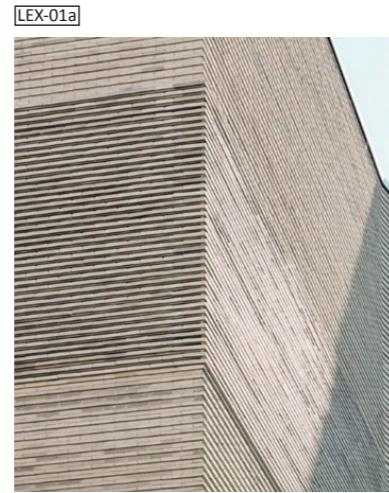
Scale:

**1 : 250 @ A3**

**Cox Architecture**  
 Level 2, 167 Flinders Lane,  
 Melbourne, VIC 3000, Australia  
 T + 61 3 9650 3288  
 F + 61 3 9650 2747  
 www.coxarchitecture.com.au

**COX**





**CODE DESCRIPTION**

GLA-01	CLEAR GLASS	RWG-01	METAL RAINWATER GOODS – COLORBOND - CHARCOAL
GLA-02	COLOUR TINTED GLASS	RWG-02	METAL RAINWATER GOODS – STAINLESS STEEL GUTTER
GLA-03	GLASS ROOF / CANOPY- FRITTED	RFS-01	METAL ROOF DECK - COLOUR 1
LEX-01a	EXTERNAL CLADDING - BRICK TYPE 1	STL-01	FABRICATED STEEL – PNT-01 FINISH
LEX-01b	EXTERNAL CLADDING - PATTERNED BRICK	AGF-01	ALUMINIUM GLAZING FRAME
LEX-01c	EXTERNAL CLADDING - METAL STANDING SEAM	PAV-01	CONCRETE PAVING SLAB
LEX-02	EXTERNAL CLADDING - CEMENT SHEET	PAV-02a	CONCRETE PAVERS (NOM URBANSTONE) COLOUR 1
RWG-01	METAL RAINWATER GOODS – COLORBOND - CHARCOAL	PAV-02b	CONCRETE PAVERS (NOM URBANSTONE) COLOUR 2
MSS-01	METAL MESH SHADING SCREEN - NOM LOCKER GROUP	PNT-01	PAINT – MIO SYSTEM METALLIC BLACK
		TMB-01	LAMINATED TIMBER STRUCTURE



Project:

**WESLEY COLLEGE NEW MIDDLE SCHOOL**

Drawing Title:

**WEST ELEVATION**

Drawing Number:

**A-30-04**

Revision:

**A**

Date:

**25.08.2017**

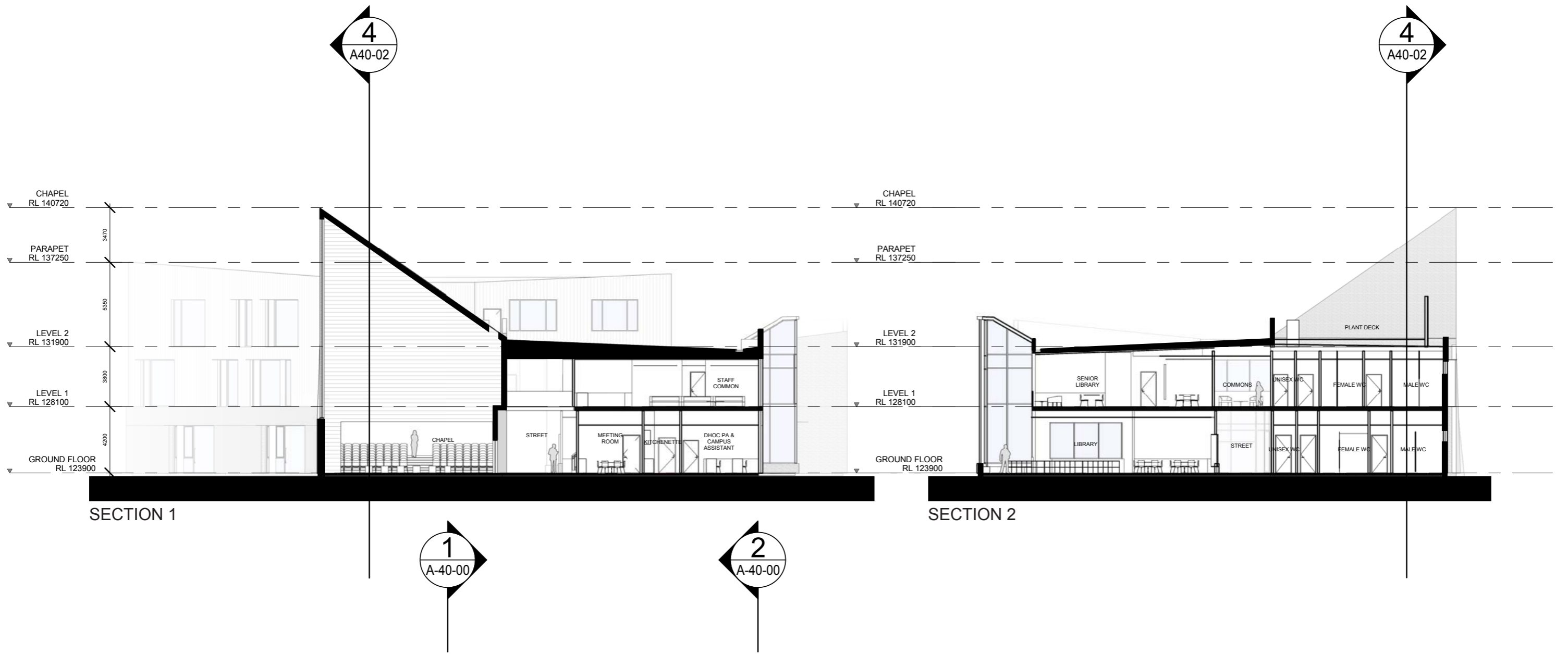
Scale:

**1 : 250 @ A3**

**Cox Architecture**  
 Level 2, 167 Flinders Lane,  
 Melbourne, VIC 3000, Australia  
 T + 61 3 9650 3288  
 F + 61 3 9650 2747  
 www.coxarchitecture.com.au







SECTION 1

SECTION 2

SECTION 3

Project:

**WESLEY COLLEGE NEW MIDDLE SCHOOL**

Drawing Title:

**SECTIONS**

Drawing Number:

**A-40-00**

Revision:

**A**

Date:

**25.08.2017**

Scale:

**1 : 250 @ A3**

**Cox Architecture**  
 Level 2, 167 Flinders Lane,  
 Melbourne, VIC 3000, Australia  
 T + 61 3 9650 3288  
 F + 61 3 9650 2747  
 www.coxarchitecture.com.au



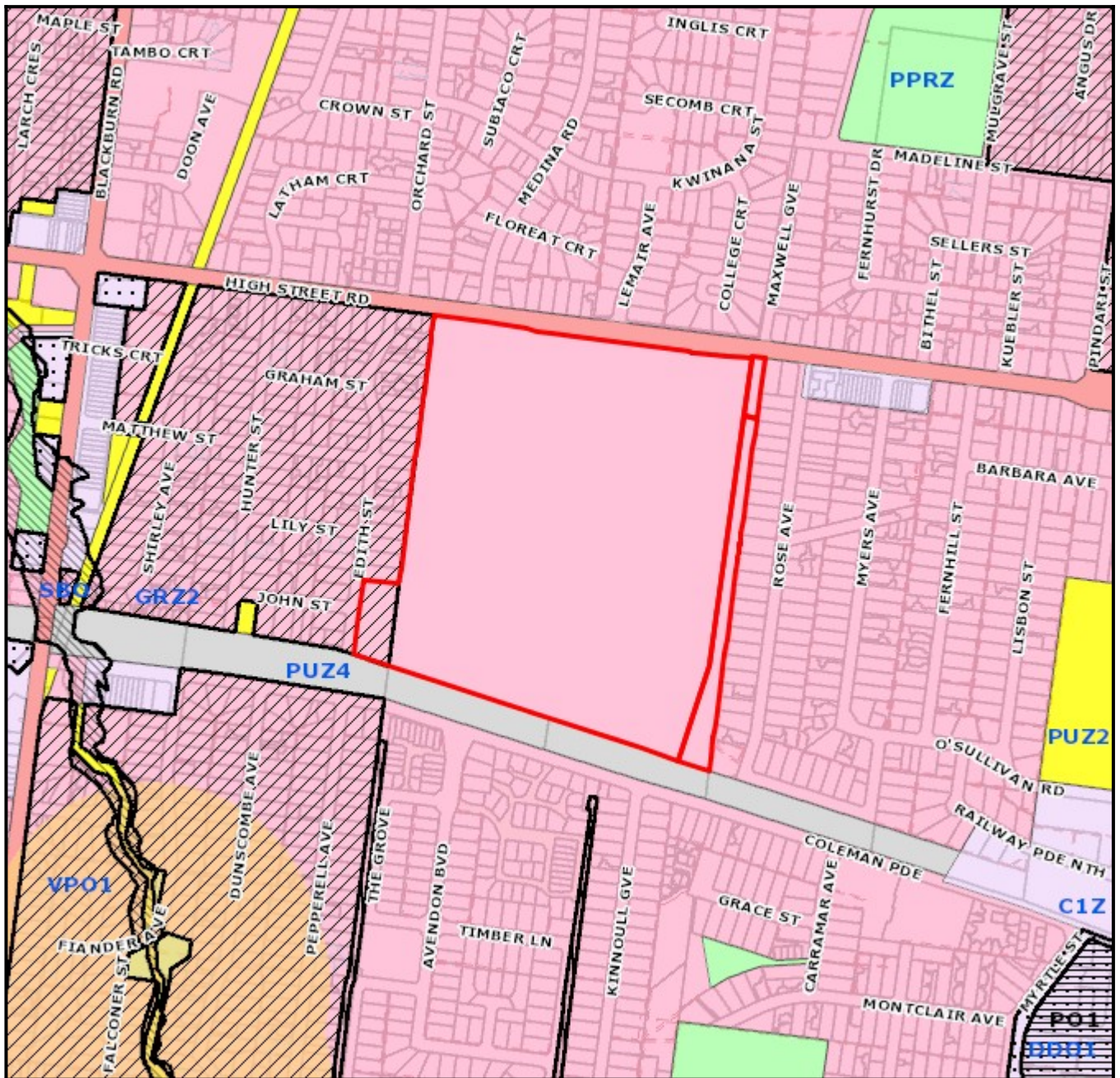








# Planning Overlays and Zones



**Legend**

<b>Planning Zones</b>	GRZ2	PUZ1	PUZ7	SUZ3	<b>Planning Overlay</b>	HO
C1Z	IN1Z	PUZ2	RDZ1	SUZ4	LSIO / SBO	IPO
C2Z	MUZ	PUZ3	RGZ1	SUZ5	NCO	DPO
CA	NRZ1	PUZ4	RGZ2	SUZ6	PAO	PO
CDZ1	PCRZ	PUZ5	SUZ1	UFZ	EAO	
GRZ1	PPRZ	PUZ6	SUZ2		DDO	
					VPO	

1:7500

**Address**  
 618-668 High Street Road GLEN WAVERLEY VIC 3150

Base data is supplied under Licence from Land Victoria. This map is for general use only and may not be used as proof of ownership, dimensions or any other status. The City of Monash endeavours to keep the information current, and welcomes notification of omissions or inaccuracies.