

SITE AREA SCHEDULE

SITE AREA	16662 sqm
Site Cover	5877.04 sqm
	35.27%
Hard Surfaces	10244.96 sqm
Includes Building footprints & site cover	
Permeability (%)	6417.04 sqm
	38.51%

APARTMENT TOWERS AREA SCHEDULE

Levels	Car parking		Common Area (m2)	Residential Apartment Towers					Terraces Area (m2)	Area per level		
	Spaces	Area (m2)		Area (m2)	1 Bed	1 Bed + St	2 Beds	2 Beds + St		3 Beds	Total	NFA (m2)
Ground Lower	43	2240.40	152.40	2240.40							2240.40	
Ground Upper	37	1397.40	346.70	603.69	3		6		9	174.60	2522.39	
1st Floor	43	1325.50	238.30	605.74	3		3		6	97.43	2326.97	
2nd Floor			124.10	897.59	4		8		12	390.11	1516.40	
3rd Floor			124.10	952.52	5		8		13	167.85	1244.47	
4th Floor			124.10	952.52	5		8		13	167.85	1244.47	
5th Floor			124.10	952.52	5		8		13	167.85	1244.47	
6th Floor			124.10	952.52	5		8		13	167.85	1244.47	
7th Floor			124.10	923.41	6		7		13	171.78	1219.29	
8th Floor			124.10	550.30	1		6		7	230.20	904.60	
Totals	123	4963.30	709.10	2107.02	37		62		99		15707.93	

Required Car Park Analysis

Rate	Visitors	1 Bed	1 Bed + St	2 Beds	2 Beds + St	3 Beds	Store
Required Cars	0.20	1.00	1.00	1.00	1.00	2.00	6m3 101
	19.80	37.00		62.00		0.00	3m3
Total car spaces required	119	Bike Racks 29.7					Total 101

APARTMENT TOWERS AREA SCHEDULE

Number of Apt's	99
1 beds	37
2 Beds	62
3 Beds	0
Car parking spaces	123
Bicycles	0
Floor areas	15707.93 sqm
Ground Lower	2240.40 sqm
Ground Upper	2522.39 sqm
1st Floor	92.25% 2326.97 sqm
2nd Floor	60.12% 1516.40 sqm
3rd Floor	49.34% 1244.47 sqm
4th Floor	49.34% 1244.47 sqm
5th Floor	49.34% 1244.47 sqm
6th Floor	49.34% 1244.47 sqm
7th Floor	48.34% 1219.29 sqm
8th Floor	35.86% 904.60 sqm

Ground Lower 2240.40 sqm

Car Spaces	43
Rubbish	62.00 sqm
Store / services	300.00 sqm
Bicycle	0
Substation	135.00 sqm
Common	152.40 sqm

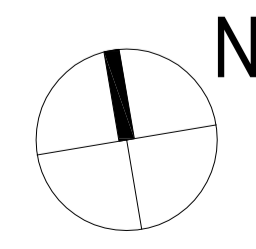
REFER TO SHEETS TA12 TO TA14 FOR UNITS LAYOUT DETAILS

REVISIONS:

No	Date	Description	By
P1	16-05-2017	For Information	
P2	10-04-2017	For Information	
P2	19-04-2017	For Information	
P3	01-05-2017	Town Planning Submission	

NOTE: ALL NOTED LEVELS ARE TO AUSTRALIAN HEIGHT DATUM (AHD)

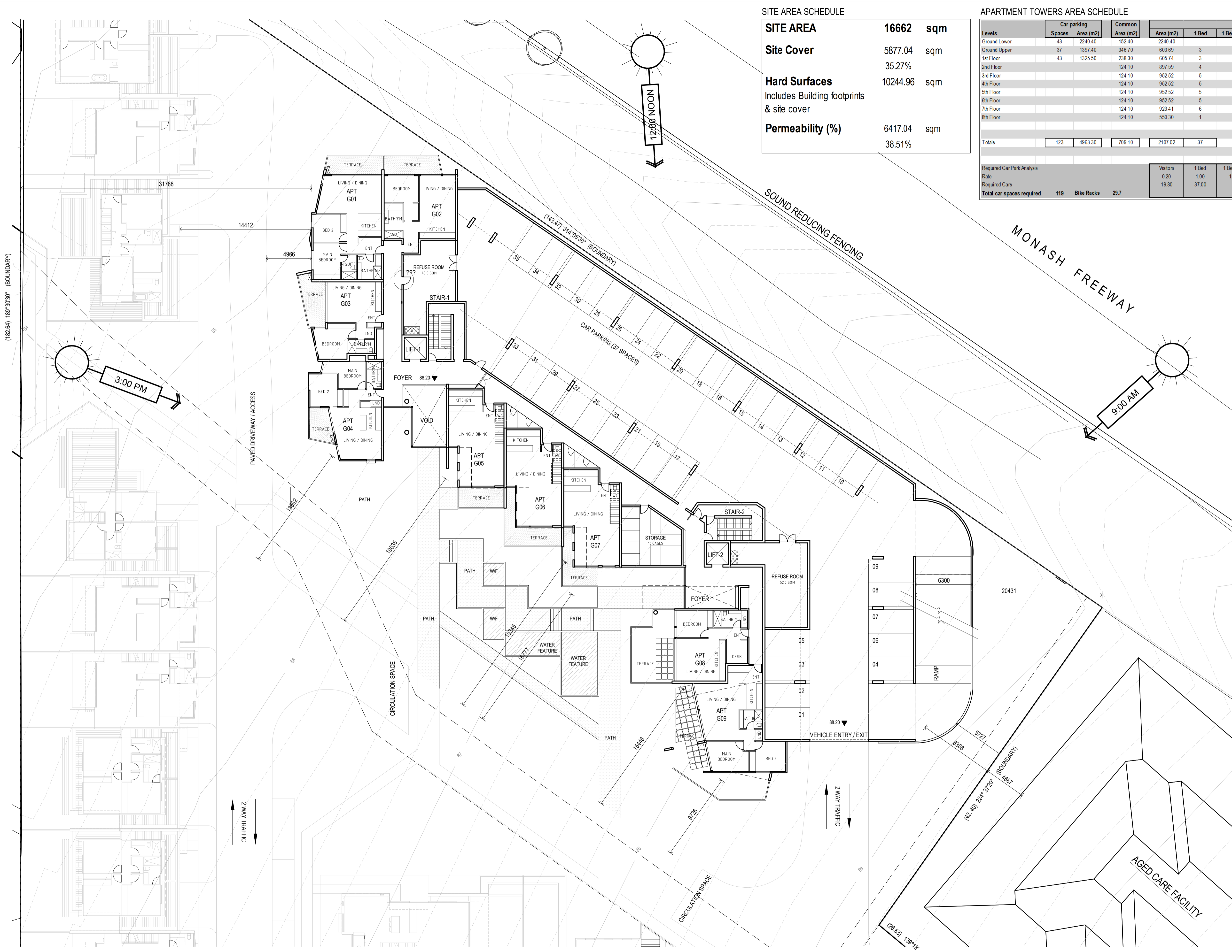
THIS DRAWING IS COPYRIGHT AND THE PROPERTY OF PETER SGOURAKIS ARCHITECT AND MUST NOT BE RETAINED, COPIED, OR USED WITHOUT THE AUTHORITY OF PETER SGOURAKIS ARCHITECT.



PROJECT:
149 HANSWORTH STREET
MULGRAVE VIC 3170
CLIENT: PONG PROPERTY DEVELOPMENT P/L
DRAWING TITLE:
TOWER - LOWER GRND / CAR PARKING
TERRACE UNITS - PART GROUND LEVEL

- TOWN PLANNING -
DATE: MAY-01-17
SCALE: 1:200 @ A1
1:400 @ A3
DWG No: TA15
REV: P3
MAY 01 2017





SITE AREA SCHEDULE

SITE AREA	16662 sqm
Site Cover	5877.04 sqm
	35.27%
Hard Surfaces	10244.96 sqm
Includes Building footprints & site cover	
Permeability (%)	6417.04 sqm
	38.51%

APARTMENT TOWERS AREA SCHEDULE

Levels	Car parking		Common Area (m ²)	Residential Apartment Towers					Terraces Area (m ²)	Area per level		
	Spaces	Area (m ²)		Area (m ²)	1 Bed	1 Bed + St	2 Beds	2 Beds + St		3 Beds	Total	NFA (m ²)
Ground Lower	43	2240.40	152.40	2240.40							2240.40	
Ground Upper	37	1397.40	346.70	603.69	3		6		9	174.60	2522.39	
1st Floor	43	1325.50	238.30	605.74	3		3		6	97.43	2326.97	
2nd Floor			124.10	897.59	4		8		12	390.11	1516.40	
3rd Floor			124.10	952.52	5		8		13	167.85	1244.47	
4th Floor			124.10	952.52	5		8		13	167.85	1244.47	
5th Floor			124.10	952.52	5		8		13	167.85	1244.47	
6th Floor			124.10	952.52	5		8		13	167.85	1244.47	
7th Floor			124.10	923.41	6		7		13	171.78	1219.29	
8th Floor			124.10	550.30	1		6		7	230.20	904.60	
Totals	123	4963.30	709.10	2107.02	37		62		99		15707.93	

Required Car Park Analysis

Rate	Visitors	1 Bed	1 Bed + St	2 Beds	2 Beds + St	3 Beds	Store
0.20	19.80	1.00	1.00	1.00	1.00	2.00	101
19.80		37.00		62.00		0.00	3m3
Total car spaces required	119	Bike Racks	29.7				Total
							101

APARTMENT TOWERS AREA SCHEDULE

Number of Apt's	99
1 beds	37
2 Beds	62
3 Beds	0
Car parking spaces	123
Bicycles	0
Floor areas	15707.93 sqm
Ground Lower	2240.40 sqm
Ground Upper	2522.39 sqm
1st Floor	92.25% 2326.97 sqm
2nd Floor	60.12% 1516.40 sqm
3rd Floor	49.34% 1244.47 sqm
4th Floor	49.34% 1244.47 sqm
5th Floor	49.34% 1244.47 sqm
6th Floor	49.34% 1244.47 sqm
7th Floor	48.34% 1219.29 sqm
8th Floor	35.86% 904.60 sqm

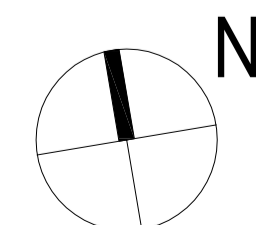
Ground Upper 2522.39 sqm

Car Spaces	37
Services	
Car parking area	1397.40 sqm
Common	346.70 sqm
Apartments	9
Apt G01	87.38 12.64
Apt G02	62.22 12.18
Apt G03	54.75 13.35
Apt G04	73.84 8.73
Apt G05 (lower)	60.40 10.61
Apt G05 (upper)	59.59 17.31
Apt G07 (lower)	59.59 12.63
Apt G08	60.00 35.00
Apt G09	85.92 51.95
	603.69 174.60

REFER TO SHEETS TA12 TO TA14 FOR UNITS LAYOUT DETAILS

REVISIONS:

No	Date	Description	By
P1	16-05-2017	For Information	
P2	10-04-2017	For Information	
P2	19-04-2017	For Information	
P3	01-05-2017	Town Planning Submission	

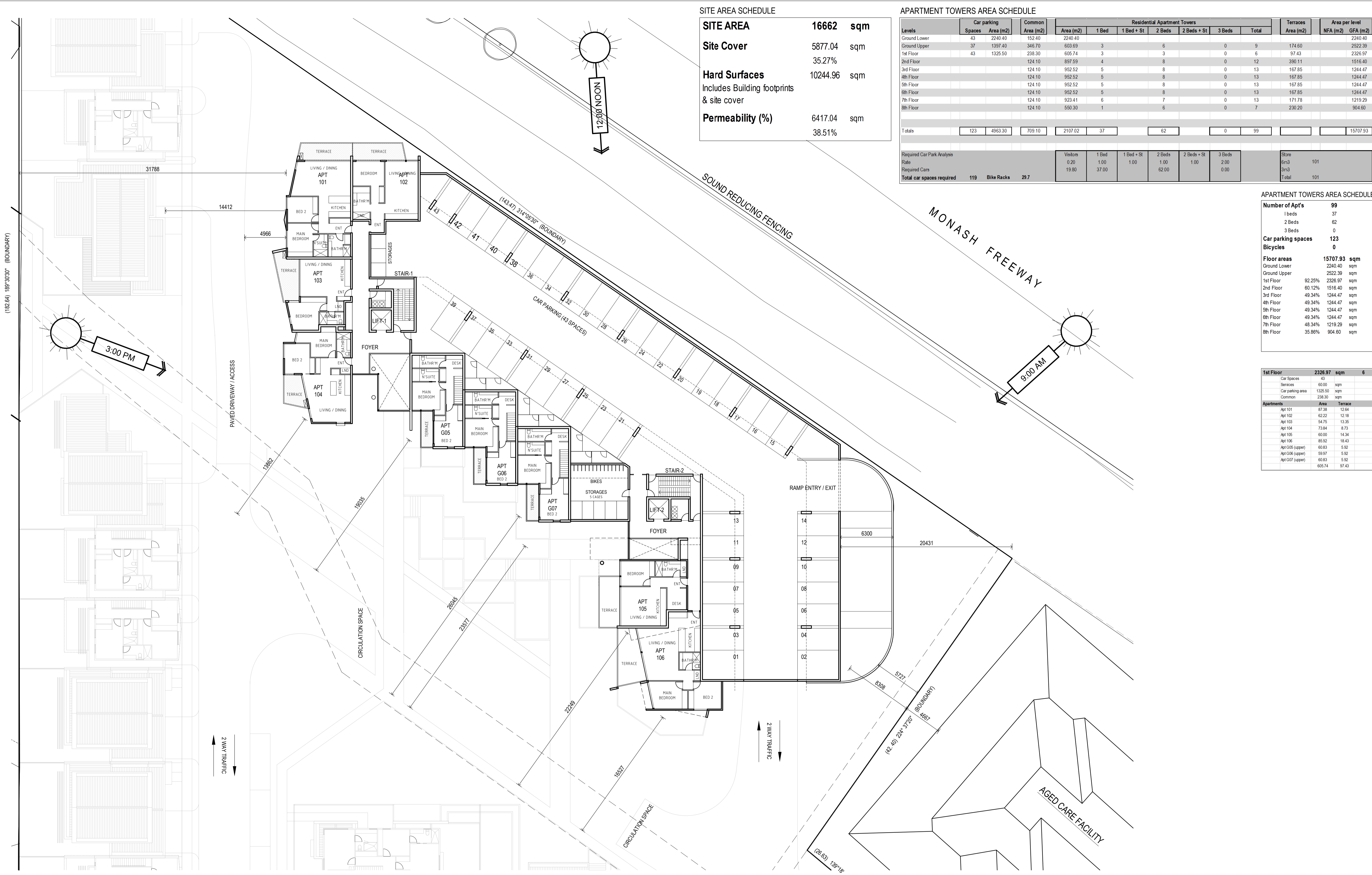


PROJECT:
149 HANSWORTH STREET
MULGRAVE VIC 3170
CLIENT: PONG PROPERTY DEVELOPMENT P/L
DRAWING TITLE:
TOWER - UPPER GRND / CAR PARKING
TERRACE UNITS - PART GROUND LEVEL

- TOWN PLANNING -
DATE: MAY-01-17
SCALE: 1:200 @ A1
1:400 @ A3
DWG No: TA16
REV: P3
MAY 01 2017



NOTE: ALL NOTED LEVELS ARE TO AUSTRALIAN HEIGHT DATUM (AHD)
THIS DRAWING IS COPYRIGHT AND THE PROPERTY OF PETER SGOURAKIS ARCHITECT AND MUST NOT BE RETAINED, COPIED, OR USED WITHOUT THE AUTHORITY OF PETER SGOURAKIS ARCHITECT.



SITE AREA SCHEDULE

SITE AREA	16662 sqm
Site Cover	5877.04 sqm
	35.27%
Hard Surfaces	10244.96 sqm
Includes Building footprints & site cover	
Permeability (%)	6417.04 sqm
	38.51%

APARTMENT TOWERS AREA SCHEDULE

Levels	Car parking		Common Area (m2)	Residential Apartment Towers					Terraces Area (m2)	Area per level		
	Spaces	Area (m2)		Area (m2)	1 Bed	1 Bed + St	2 Beds	2 Beds + St		3 Beds	Total	NFA (m2)
Ground Lower	43	2240.40	152.40	2240.40							2240.40	
Ground Upper	37	1397.40	346.70	603.69	3		6		9	174.60	2522.39	
1st Floor	43	1325.50	238.30	605.74	3		3		6	97.43	2326.97	
2nd Floor			124.10	897.59	4		8		12	390.11	1516.40	
3rd Floor			124.10	952.52	5		8		13	167.85	1244.47	
4th Floor			124.10	952.52	5		8		13	167.85	1244.47	
5th Floor			124.10	952.52	5		8		13	167.85	1244.47	
6th Floor			124.10	952.52	5		8		13	167.85	1244.47	
7th Floor			124.10	923.41	6		7		13	171.78	1219.29	
8th Floor			124.10	550.30	1		6		7	230.20	904.60	
Totals	123	4963.30	709.10	2107.02	37		62		99		15707.93	

Required Car Park Analysis

Rate	0.20	1.00	1.00	1.00	1.00	2.00		Store	6m3	101
Required Cars	19.80	37.00		62.00		0.00		3m3		
Total car spaces required	119	Bike Racks	29.7					Total	101	

APARTMENT TOWERS AREA SCHEDULE

Number of Apt's	99
1 beds	37
2 Beds	62
3 Beds	0
Car parking spaces	123
Bicycles	0
Floor areas	15707.93 sqm
Ground Lower	2240.40 sqm
Ground Upper	2522.39 sqm
1st Floor	92.25% 2326.97 sqm
2nd Floor	60.12% 1516.40 sqm
3rd Floor	49.34% 1244.47 sqm
4th Floor	49.34% 1244.47 sqm
5th Floor	49.34% 1244.47 sqm
6th Floor	49.34% 1244.47 sqm
7th Floor	48.34% 1219.29 sqm
8th Floor	35.86% 904.60 sqm

1st Floor

2326.97 sqm	6
Car Spaces	43
Services	60.00 sqm
Car parking area	1325.50 sqm
Common	238.30 sqm

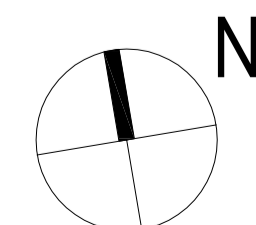
Apartments

Apartments	Area	Terrace
Apt 101	87.38	12.64
Apt 102	62.22	12.18
Apt 103	54.75	13.35
Apt 104	73.84	8.73
Apt 105	60.00	14.34
Apt 106	85.92	18.43
Apt G05 (upper)	60.83	5.92
Apt G06 (upper)	59.97	5.92
Apt G07 (upper)	60.83	5.92
	605.74	97.43

REFER TO SHEETS TA12 TO TA14 FOR UNITS LAYOUT DETAILS

REVISIONS:

No	Date	Description	By
P1	16-05-2017	For information	
P2	10-04-2017	For information	
P2	19-04-2017	For information	
P3	01-05-2017	Town Planning Submission	

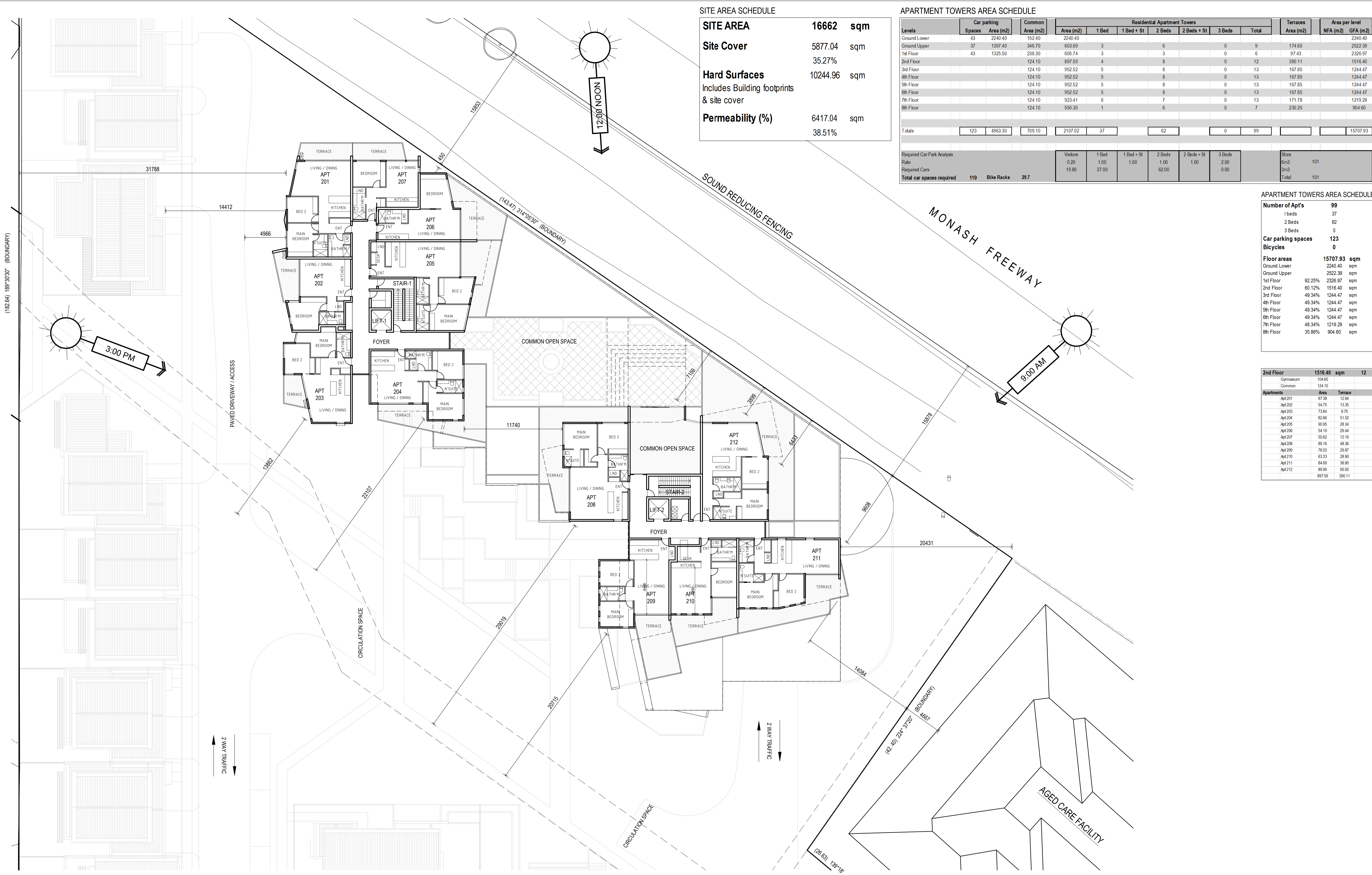


PROJECT:
 149 HANSWORTH STREET
 MULGRAVE VIC 3170
CLIENT: PONG PROPERTY DEVELOPMENT P/L
DRAWING TITLE:
 TOWER - 1st FLOOR
 TERRACE UNITS - PART 1st FLOOR

- TOWN PLANNING -
 DATE: MAY-01-17
 SCALE: 1:200 @ A1
 1:400 @ A3
 DWG No: TA17
 REV: P3
 MAY 01 2017



NOTE: ALL NOTED LEVELS ARE TO AUSTRALIAN HEIGHT DATUM (AHD)
 THIS DRAWING IS COPYRIGHT AND THE PROPERTY OF PETER SGOURAKIS ARCHITECT AND MUST NOT BE RETAINED, COPIED, OR USED WITHOUT THE AUTHORITY OF PETER SGOURAKIS ARCHITECT.



SITE AREA SCHEDULE

SITE AREA	16662 sqm
Site Cover	5877.04 sqm
	35.27%
Hard Surfaces	10244.96 sqm
Includes Building footprints & site cover	
Permeability (%)	6417.04 sqm
	38.51%

APARTMENT TOWERS AREA SCHEDULE

Levels	Car parking		Common Area (m2)	Residential Apartment Towers					Terraces Area (m2)	Area per level		
	Spaces	Area (m2)		Area (m2)	1 Bed	1 Bed + St	2 Beds	2 Beds + St		3 Beds	Total	NFA (m2)
Ground Lower	43	2240.40	152.40	2240.40							2240.40	
Ground Upper	37	1397.40	346.70	603.69	3		6		9	174.60	2522.39	
1st Floor	43	1325.50	238.30	605.74	3		3		6	97.43	2326.97	
2nd Floor			124.10	897.59	4		8		12	390.11	1516.40	
3rd Floor			124.10	952.52	5		8		13	167.85	1244.47	
4th Floor			124.10	952.52	5		8		13	167.85	1244.47	
5th Floor			124.10	952.52	5		8		13	167.85	1244.47	
6th Floor			124.10	952.52	5		8		13	167.85	1244.47	
7th Floor			124.10	923.41	6		7		13	171.78	1219.29	
8th Floor			124.10	550.30	1		6		7	230.20	904.60	
Totals	123	4963.30	709.10	2107.02	37		62		99		15707.93	

Required Car Park Analysis

Rate	Visitors	1 Bed	1 Bed + St	2 Beds	2 Beds + St	3 Beds	Store
0.20	1.00	1.00	1.00	1.00	1.00	2.00	6m3 101
19.80	37.00					0.00	3m3
Required Cars	119	Bike Racks 29.7					Total 101

APARTMENT TOWERS AREA SCHEDULE

Number of Apt's	99
1 beds	37
2 Beds	62
3 Beds	0
Car parking spaces	123
Bicycles	0
Floor areas	15707.93 sqm
Ground Lower	2240.40 sqm
Ground Upper	2522.39 sqm
1st Floor	92.25% 2326.97 sqm
2nd Floor	60.12% 1516.40 sqm
3rd Floor	49.34% 1244.47 sqm
4th Floor	49.34% 1244.47 sqm
5th Floor	49.34% 1244.47 sqm
6th Floor	49.34% 1244.47 sqm
7th Floor	48.34% 1219.29 sqm
8th Floor	35.86% 904.60 sqm

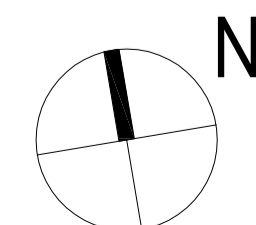
2nd Floor 1516.40 sqm 12

Apartment	Area	Terrace
Gymnasium	104.60	
Common	124.10	
Apt 201	87.35	12.64
Apt 202	54.75	13.35
Apt 203	73.84	8.70
Apt 204	82.66	51.52
Apt 205	90.95	28.34
Apt 206	54.19	29.44
Apt 207	50.82	12.19
Apt 208	89.16	48.36
Apt 209	76.03	29.87
Apt 210	63.33	28.90
Apt 211	84.69	36.80
Apt 212	89.99	90.00
	897.99	390.11

REFER TO SHEETS TA12 TO TA14 FOR UNITS LAYOUT DETAILS

REVISIONS:

No	Date	Description	By
P1	16-05-2017	For Information	
P2	10-04-2017	For Information	
P2	19-04-2017	For Information	
P3	01-05-2017	Town Planning Submission	



PROJECT:
 149 HANSWORTH STREET
 MULGRAVE VIC 3170
CLIENT: PONG PROPERTY DEVELOPMENT P/L
DRAWING TITLE:
 TOWER - 2nd FLOOR
 TERRACE UNITS - PART 2nd FLOOR

- TOWN PLANNING -
 DATE: MAY-01-17
 SCALE: 1:200 @ A1
 1:400 @ A3
 DWG No: TA18
 REV: P3
 MAY 01 2017



NOTE: ALL NOTED LEVELS ARE TO AUSTRALIAN HEIGHT DATUM (AHD)



SITE AREA SCHEDULE

SITE AREA	16662 sqm
Site Cover	5877.04 sqm
	35.27%
Hard Surfaces	10244.96 sqm
Includes Building footprints & site cover	
Permeability (%)	6417.04 sqm
	38.51%

APARTMENT TOWERS AREA SCHEDULE

Levels	Car parking		Common Area (m2)	Residential Apartment Towers					Terraces Area (m2)	Area per level	
	Spaces	Area (m2)		Area (m2)	1 Bed	1 Bed + St	2 Beds	2 Beds + St		3 Beds	Total
Ground Lower	43	2240.40	152.40	2240.40					9	174.60	2240.40
Ground Upper	37	1397.40	346.70	603.69	3		6		6	97.43	2522.39
1st Floor	43	1325.50	238.30	605.74	3		3		12	390.11	2326.97
2nd Floor			124.10	897.59	4		8		0	1516.40	1516.40
3rd Floor			124.10	952.52	5		8		13	167.85	1244.47
4th Floor			124.10	952.52	5		8		13	167.85	1244.47
5th Floor			124.10	952.52	5		8		13	167.85	1244.47
6th Floor			124.10	952.52	5		8		13	167.85	1244.47
7th Floor			124.10	923.41	6		7		13	171.78	1219.29
8th Floor			124.10	550.30	1		6		7	230.20	904.60
Totals	123	4963.30	709.10	2107.02	37		62		99		15707.93

Required Car Park Analysis

Rate	Visitors	1 Bed	1 Bed + St	2 Beds	2 Beds + St	3 Beds	Store
Required Cars	0.20	1.00	1.00	1.00	1.00	2.00	6m3 101
Required Car Spaces	19.80	37.00	62.00	0.00			3m3 101
Total car spaces required	119	Bike Racks 29.7					Total 101

APARTMENT TOWERS AREA SCHEDULE

Number of Apt's	99
1 beds	37
2 Beds	62
3 Beds	0
Car parking spaces	123
Bicycles	0
Floor areas	15707.93 sqm
Ground Lower	2240.40 sqm
Ground Upper	2522.39 sqm
1st Floor	92.25% 2326.97 sqm
2nd Floor	60.12% 1516.40 sqm
3rd Floor	49.34% 1244.47 sqm
4th Floor	49.34% 1244.47 sqm
5th Floor	49.34% 1244.47 sqm
6th Floor	49.34% 1244.47 sqm
7th Floor	48.34% 1219.29 sqm
8th Floor	35.86% 904.60 sqm

3rd Floor 1244.47 sqm 13

Common	Area	Terrace
Apt 301	87.38	12.64
Apt 302	54.75	13.35
Apt 303	73.84	8.70
Apt 304	82.66	16.00
Apt 305	90.95	13.70
Apt 306	54.19	8.70
Apt 307	56.62	12.19
Apt 308	86.36	16.16
Apt 309	76.03	10.53
Apt 310	63.33	8.41
Apt 311	84.69	14.46
Apt 312	90.00	21.35
Apt 313	55.72	11.66
Apt 313	95.52	16.85

4th Floor 1244.47 sqm 13

Common	Area	Terrace
Apt 401	87.38	12.64
Apt 402	54.75	13.35
Apt 403	73.84	8.70
Apt 404	82.66	16.00
Apt 405	90.95	13.70
Apt 406	54.19	8.70
Apt 407	56.62	12.19
Apt 408	86.36	16.16
Apt 409	76.03	10.53
Apt 410	63.33	8.41
Apt 411	84.69	14.46
Apt 412	90.00	21.35
Apt 413	55.72	11.66
Apt 413	95.52	16.85

5th Floor 1244.47 sqm 13

Common	Area	Terrace
Apt 501	87.38	12.64
Apt 502	54.75	13.35
Apt 503	73.84	8.70
Apt 504	82.66	16.00
Apt 505	90.95	13.70
Apt 506	54.19	8.70
Apt 507	56.62	12.19
Apt 508	86.36	16.16
Apt 509	76.03	10.53
Apt 510	63.33	8.41
Apt 511	84.69	14.46
Apt 512	90.00	21.35
Apt 513	55.72	11.66
Apt 513	95.52	16.85

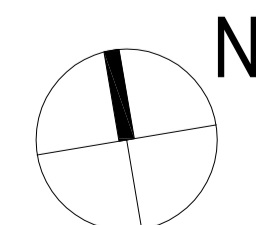
6th Floor 1244.47 sqm 13

Common	Area	Terrace
Apt 601	87.38	12.64
Apt 602	54.75	13.35
Apt 603	73.84	8.70
Apt 604	82.66	16.00
Apt 605	90.95	13.70
Apt 606	54.19	8.70
Apt 607	56.62	12.19
Apt 608	86.36	16.16
Apt 609	76.03	10.53
Apt 610	63.33	8.41
Apt 611	84.69	14.46
Apt 612	90.00	21.35
Apt 613	55.72	11.66
Apt 613	95.52	16.85

REFER TO SHEETS TA12 TO TA14 FOR UNITS LAYOUT DETAILS

REVISIONS:

No	Date	Description	By
P1	16-05-2017	For Information	
P2	10-04-2017	For Information	
P2	19-04-2017	For Information	
P3	01-05-2017	Town Planning Submission	



PROJECT:
149 HANSWORTH STREET
MULGRAVE VIC 3170
CLIENT: PONG PROPERTY DEVELOPMENT P/L
DRAWING TITLE:
TOWER - 3rd, 4th, 5th, & 6th FLOORS

- TOWN PLANNING -
DATE: MAY-01-17
SCALE: 1:200 @ A1
1:400 @ A3
DWG No: TA19
REV: P3
MAY 01 2017



NOTE: ALL NOTED LEVELS ARE TO AUSTRALIAN HEIGHT DATUM (AHD)

THIS DRAWING IS COPYRIGHT AND THE PROPERTY OF PETER SGOURAKIS ARCHITECT AND MUST NOT BE RETAINED, COPIED, OR USED WITHOUT THE AUTHORITY OF PETER SGOURAKIS ARCHITECT.



SITE AREA SCHEDULE

SITE AREA	16662 sqm
Site Cover	5877.04 sqm
	35.27%
Hard Surfaces	10244.96 sqm
Includes Building footprints & site cover	
Permeability (%)	6417.04 sqm
	38.51%

APARTMENT TOWERS AREA SCHEDULE

Levels	Car parking		Common Area (m2)	Residential Apartment Towers					Terraces Area (m2)	Area per level		
	Spaces	Area (m2)		Area (m2)	1 Bed	1 Bed + St	2 Beds	2 Beds + St		3 Beds	Total	NFA (m2)
Ground Lower	43	2240.40	152.40	2240.40							2240.40	
Ground Upper	37	1397.40	346.70	603.69	3		6		9	174.60	2522.39	
1st Floor	43	1325.50	238.30	605.74	3		3		6	97.43	2326.97	
2nd Floor			124.10	897.59	4		8		12	390.11	1516.40	
3rd Floor			124.10	952.52	5		8		13	167.85	1244.47	
4th Floor			124.10	952.52	5		8		13	167.85	1244.47	
5th Floor			124.10	952.52	5		8		13	167.85	1244.47	
6th Floor			124.10	952.52	5		8		13	167.85	1244.47	
7th Floor			124.10	923.41	6		7		13	171.78	1219.29	
8th Floor			124.10	550.30	1		6		7	230.20	904.60	
Totals	123	4963.30	709.10	2107.02	37		62		99		15707.93	

Required Car Park Analysis

Rate	Visitors	1 Bed	1 Bed + St	2 Beds	2 Beds + St	3 Beds	Store
Rate	0.20	1.00	1.00	1.00	1.00	2.00	6m3 101
Required Cars	19.80	37.00		62.00		0.00	3m3
Total car spaces required	119	Bike Racks 29.7					Total 101

APARTMENT TOWERS AREA SCHEDULE

Number of Apt's	99
1 beds	37
2 Beds	62
3 Beds	0
Car parking spaces	123
Bicycles	0
Floor areas	15707.93 sqm
Ground Lower	2240.40 sqm
Ground Upper	2522.39 sqm
1st Floor	92.25% 2326.97 sqm
2nd Floor	60.12% 1516.40 sqm
3rd Floor	49.34% 1244.47 sqm
4th Floor	49.34% 1244.47 sqm
5th Floor	49.34% 1244.47 sqm
6th Floor	49.34% 1244.47 sqm
7th Floor	48.34% 1219.29 sqm
8th Floor	35.86% 904.60 sqm

7th Floor 1219.29 sqm 13

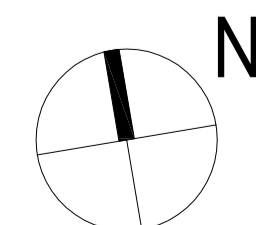
Common	Area	Terrace
Apt 701	87.38	12.84
Apt 702	54.75	13.35
Apt 703	73.84	8.70
Apt 704	82.88	16.00
Apt 705	90.95	13.70
Apt 706	52.69	10.20
Apt 707	50.90	12.19
Apt 708	88.38	18.16
Apt 709	76.03	10.53
Apt 710	63.33	8.40
Apt 711	56.90	16.90
Apt 712	90.00	21.35
Apt 713	55.72	11.86
	923.41	171.78

REFER TO SHEETS TA12 TO TA14 FOR UNITS LAYOUT DETAILS

REVISIONS:

No	Date	Description	By
P1	16-03-2017	For Information	
P2	10-04-2017	For Information	
P2	19-04-2017	For Information	
P3	01-05-2017	Town Planning Submission	

NOTE: ALL NOTED LEVELS ARE TO AUSTRALIAN HEIGHT DATUM (AHD)

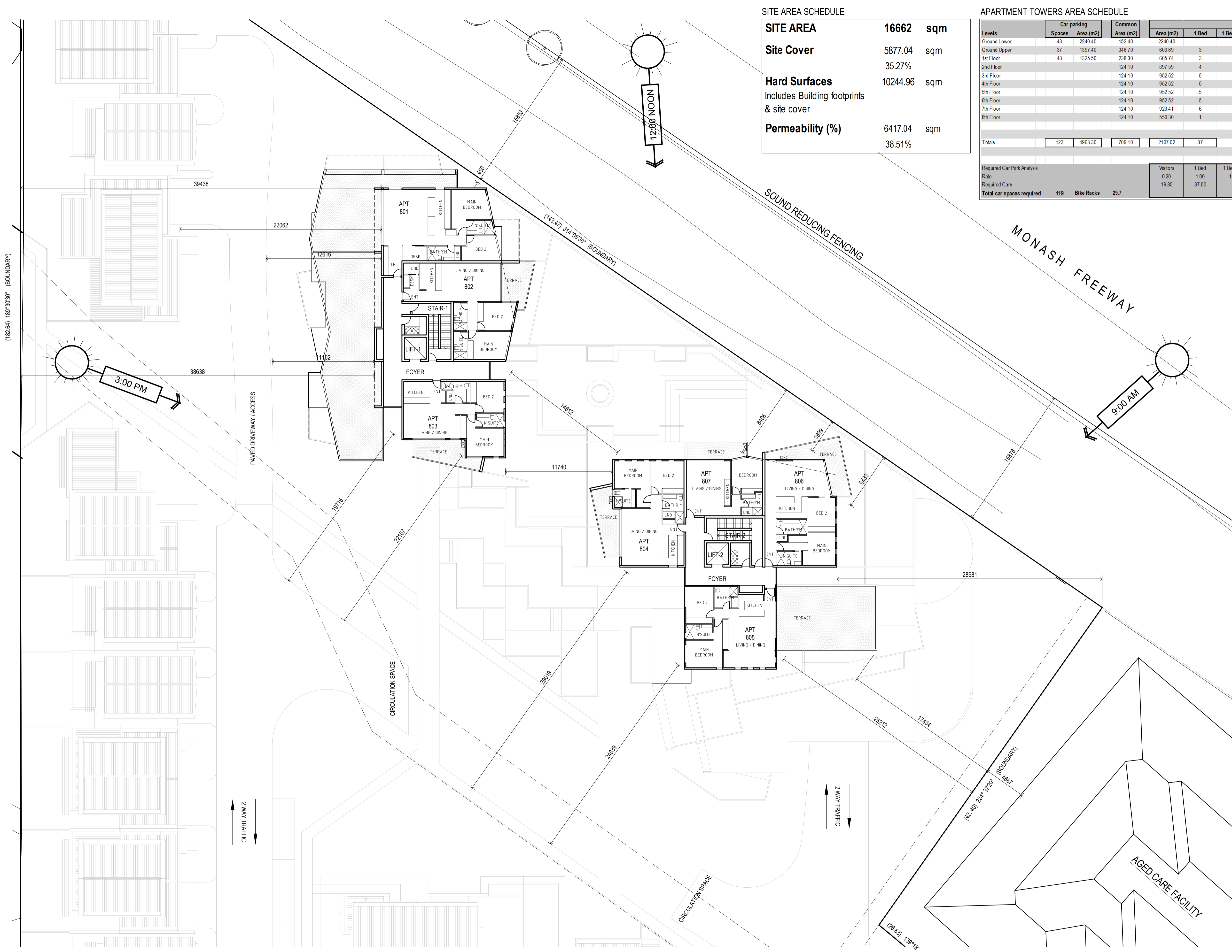


PROJECT:
149 HANSWORTH STREET
MULGRAVE VIC 3170
CLIENT: PONG PROPERTY DEVELOPMENT P/L
DRAWING TITLE:
TOWER - 7th FLOOR

- TOWN PLANNING -
DATE: MAY-01-17
SCALE: 1:200 @ A1
1:400 @ A3
DWG No: TA20
REV: P3
MAY 01 2017



THIS DRAWING IS COPYRIGHT AND THE PROPERTY OF PETER SGOURAKIS ARCHITECT AND MUST NOT BE RETAINED, COPIED, OR USED WITHOUT THE AUTHORITY OF PETER SGOURAKIS ARCHITECT.



SITE AREA SCHEDULE

SITE AREA	16662 sqm
Site Cover	5877.04 sqm
	35.27%
Hard Surfaces	10244.96 sqm
Includes Building footprints & site cover	
Permeability (%)	6417.04 sqm
	38.51%

APARTMENT TOWERS AREA SCHEDULE

Levels	Car parking		Common Area (m2)	Residential Apartment Towers					Terraces Area (m2)	Area per level		
	Spaces	Area (m2)		Area (m2)	1 Bed	1 Bed + St	2 Beds	2 Beds + St		3 Beds	Total	NFA (m2)
Ground Lower	43	2240.40	152.40	2240.40							2240.40	
Ground Upper	37	1397.40	346.70	603.69	3		6		9	174.60	2522.39	
1st Floor	43	1325.50	238.30	605.74	3		3		6	97.43	2326.97	
2nd Floor			124.10	897.59	4		8		12	390.11	1516.40	
3rd Floor			124.10	952.52	5		8		13	167.85	1244.47	
4th Floor			124.10	952.52	5		8		13	167.85	1244.47	
5th Floor			124.10	952.52	5		8		13	167.85	1244.47	
6th Floor			124.10	952.52	5		8		13	167.85	1244.47	
7th Floor			124.10	923.41	6		7		13	171.78	1219.29	
8th Floor			124.10	550.30	1		6		7	230.20	904.60	
Totals	123	4963.30	709.10	2107.02	37		62		99		15707.93	

Required Car Park Analysis

Rate	Visitors	1 Bed	1 Bed + St	2 Beds	2 Beds + St	3 Beds	Store
Rate	0.20	1.00	1.00	1.00	1.00	2.00	6m3
Required Cars	19.80	37.00		62.00		0.00	3m3
Total car spaces required	119	Bike Racks	29.7				Total
							101

APARTMENT TOWERS AREA SCHEDULE

Number of Apt's	99
1 beds	37
2 Beds	62
3 Beds	0
Car parking spaces	123
Bicycles	0
Floor areas	15707.93 sqm
Ground Lower	2240.40 sqm
Ground Upper	2522.39 sqm
1st Floor	92.25% 2326.97 sqm
2nd Floor	60.12% 1516.40 sqm
3rd Floor	49.34% 1244.47 sqm
4th Floor	49.34% 1244.47 sqm
5th Floor	49.34% 1244.47 sqm
6th Floor	49.34% 1244.47 sqm
7th Floor	48.34% 1219.29 sqm
8th Floor	35.86% 904.60 sqm

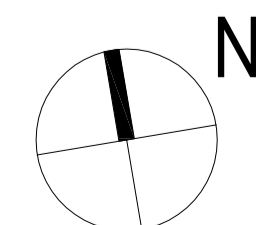
8th Floor

Common	124.10	Area	77.55
Apartments	904.60	Area	16.00
Apt 801	102.87	13.70	
Apt 802	90.95	13.70	
Apt 803	32.66	16.00	
Apt 804	88.36	16.00	
Apt 805	89.74	13.90	
Apt 806	90.00	21.35	
Apt 807	55.72	11.66	
	550.30	230.20	

REFER TO SHEETS TA12 TO TA14 FOR UNITS LAYOUT DETAILS

REVISIONS:

No	Date	Description	By
P1	16-03-2017	For Information	
P2	10-04-2017	For Information	
P2	19-04-2017	For Information	
P3	01-05-2017	Town Planning Submission	

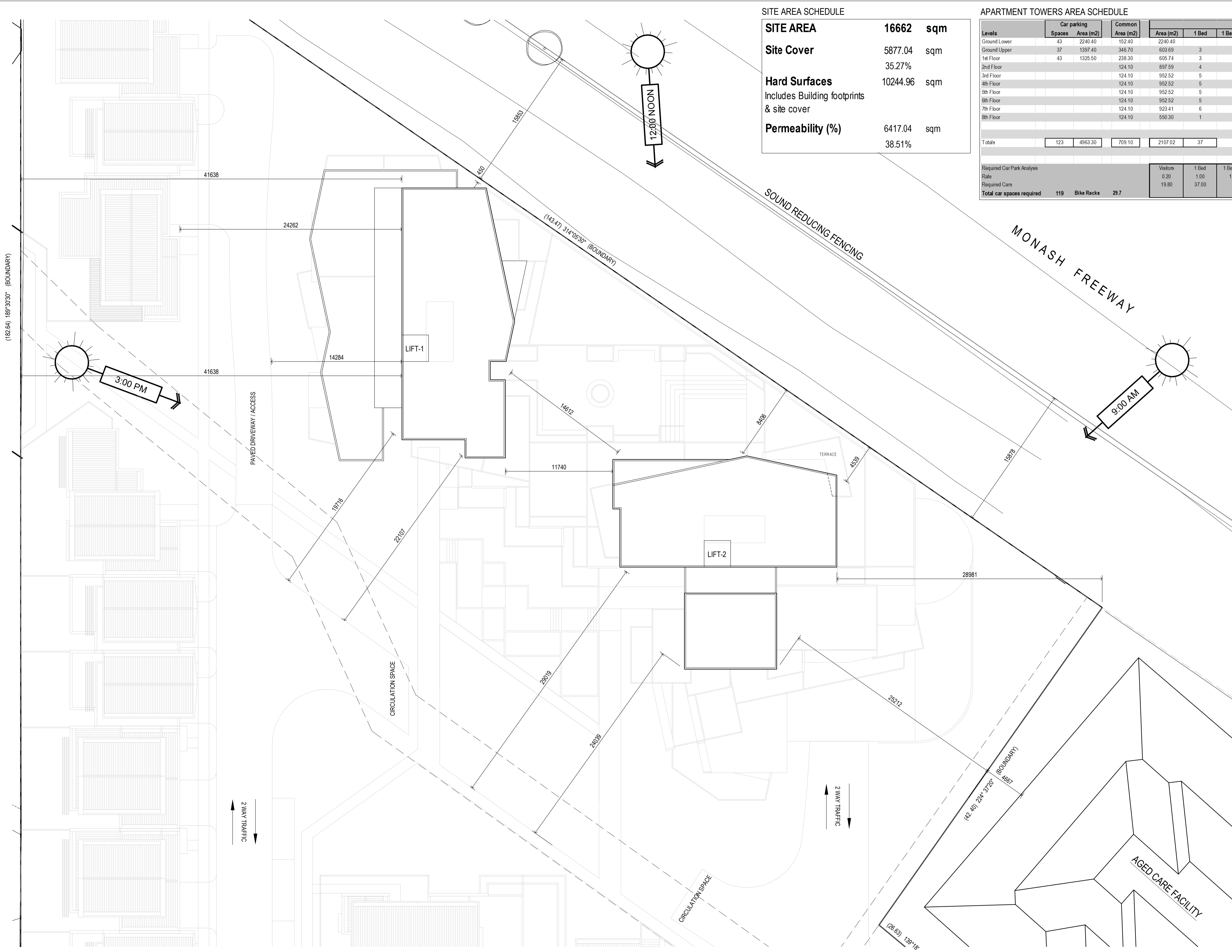


PROJECT:
 149 HANSWORTH STREET
 MULGRAVE VIC 3170
CLIENT: PONG PROPERTY DEVELOPMENT P/L
DRAWING TITLE:
 TOWER - 8th FLOOR

- TOWN PLANNING -
 DATE: MAY-01-17
 SCALE: 1:200 @ A1
 1:400 @ A3
 DWG No: TA21
 REV: P3
 MAY 01 2017



THIS DRAWING IS COPYRIGHT AND THE PROPERTY OF PETER SGOURAKIS ARCHITECT AND MUST NOT BE RETAINED, COPIED, OR USED WITHOUT THE AUTHORITY OF PETER SGOURAKIS ARCHITECT.



SITE AREA SCHEDULE

SITE AREA	16662 sqm
Site Cover	5877.04 sqm
	35.27%
Hard Surfaces	10244.96 sqm
Includes Building footprints & site cover	
Permeability (%)	6417.04 sqm
	38.51%

APARTMENT TOWERS AREA SCHEDULE

Levels	Car parking		Common Area (m2)	Residential Apartment Towers					Terraces Area (m2)	Area per level	
	Spaces	Area (m2)		Area (m2)	1 Bed	1 Bed + St	2 Beds	2 Beds + St		3 Beds	Total
Ground Lower	43	2240.40	152.40	2240.40					9	174.60	2240.40
Ground Upper	37	1397.40	346.70	603.69	3		6		6	97.43	2522.39
1st Floor	43	1325.50	238.30	605.74	3		3		6		2326.97
2nd Floor			124.10	897.59	4		8		12	390.11	1516.40
3rd Floor			124.10	952.52	5		8		13	167.85	1244.47
4th Floor			124.10	952.52	5		8		13	167.85	1244.47
5th Floor			124.10	952.52	5		8		13	167.85	1244.47
6th Floor			124.10	952.52	5		8		13	167.85	1244.47
7th Floor			124.10	923.41	6		7		13	171.78	1219.29
8th Floor			124.10	550.30	1		6		7	230.20	904.60
Totals	123	4963.30	709.10	2107.02	37		62		99		15707.93

Required Car Park Analysis		Visitors	1 Bed	1 Bed + St	2 Beds	2 Beds + St	3 Beds	Store
Rate		0.20	1.00	1.00	1.00	1.00	2.00	6m3 101
Required Cars		19.80	37.00		62.00		0.00	3m3
Total car spaces required	119	Bike Racks	29.7					Total 101

APARTMENT TOWERS AREA SCHEDULE

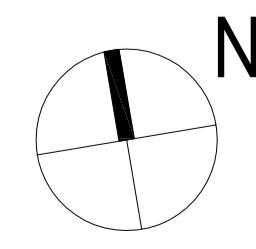
Number of Apt's	99
1 beds	37
2 Beds	62
3 Beds	0
Car parking spaces	123
Bicycles	0
Floor areas	15707.93 sqm
Ground Lower	2240.40 sqm
Ground Upper	2522.39 sqm
1st Floor	92.25% 2326.97 sqm
2nd Floor	60.12% 1516.40 sqm
3rd Floor	49.34% 1244.47 sqm
4th Floor	49.34% 1244.47 sqm
5th Floor	49.34% 1244.47 sqm
6th Floor	49.34% 1244.47 sqm
7th Floor	48.34% 1219.29 sqm
8th Floor	35.86% 904.60 sqm

REFER TO SHEETS TA12 TO TA14 FOR UNITS LAYOUT DETAILS

REVISIONS:

No	Date	Description	By
P1	16-05-2017	For Information	
P2	10-04-2017	For Information	
P2	19-04-2017	For Information	
P3	01-05-2017	Town Planning Submission	

THIS DRAWING IS COPYRIGHT AND THE PROPERTY OF PETER SGOURAKIS ARCHITECT AND MUST NOT BE RETAINED, COPIED, OR USED WITHOUT THE AUTHORITY OF PETER SGOURAKIS ARCHITECT.



PROJECT:
 149 HANSWORTH STREET
 MULGRAVE VIC 3170
CLIENT: PONG PROPERTY DEVELOPMENT P/L
DRAWING TITLE:
 TOWER - ROOF PLAN

- TOWN PLANNING -
 DATE: MAY-01-17
 SCALE: 1:200 @ A1
 1:400 @ A3
 DWG No: TA22
 REV: P3
 MAY 01 2017

