

# Results of Playgroup Community Surveys October 2019

- Community Survey concerning the potential move of Legend Park Supported Playgroups to Mulgrave Community Centre.
- Community Survey concerning the potential move of the Small Group Supported Playgroup to Mulgrave Community Centre or Legend Park, Glen Waverley.

# Contents

Preamble	3
Results of Large Group Supported Playgroup Questions	4
Results of Small Group Supported Playgroup Questions	6
Concluding Comments and considerations for Council	7
 <i>Attachments:</i>	
1. <i>Community Survey - Potential move of Legend Park Supported Playgroups to Mulgrave Community Centre.</i>	9
2. <i>Community Survey - Potential move of Small Group Supported Playgroup to Mulgrave Community Centre or Legend Park.</i>	10

## A. Preamble

Monash Council is keen to explore future options for the continued provision of flexible and accessible supported playgroups in the municipality.

There may be an opportunity to establish a new venue at the Mulgrave Community Centre and to relocate existing playgroups from Legend Park in Glen Waverley as well as the small group supported playgroup. Moving the playgroups to Mulgrave would allow flexibility for playgroups to be held over 5 days instead of 3 days. If the proposal to relocate proceeds, the Mulgrave Community Centre will require some internal building works and the creation of an outdoor play space to accommodate playgroup activities.

Existing playgroup users of the large and small supported playgroups were invited to complete separate written surveys to assist Council in their deliberations. The survey questions are provided as attachments to this report.

### **A. Results of Large Group Supported Playgroup Questions**

A total of seventy (70) large group survey responses were received.

#### ***Question One:***

#### **a) Would you attend playgroup if it relocated to Mulgrave Community Centre?**

- 42 respondents indicated that they would attend playgroup in Mulgrave.
- 28 respondents would not attend playgroup in Mulgrave.

#### **b) If not, why?**

- The reasons stated for not attending playgroup at Mulgrave were as follows:
  - Too far away (21 respondents).
  - Busy on other days (5 respondents).
  - Not safe
  - Prefer playgroup 5 days a week at Legend Park.
  - Very disappointed that 5 days won't be offered at Legend Park. Playgroup has been hugely successful and there is strong interest in 5 days a week here.

**Question Two:****a) Would you consider alternating between the Legend Park Centre and the Mulgrave Community Centre for playgroup?**

- 43 respondents indicated they would consider alternating between Legend Park and Mulgrave Centres.
- 27 respondents indicated that they would not consider alternating between centres.

**b) If not, why not?**

- Mulgrave is too far - Legend Park is close to home and school (19 respondents)
- Many families walk (2 respondents).
- Not safe
- Child is enrolled in 3/4 year old kindergarten at Legend Park in 2020.
- Establish other playgroup in north of Monash and leave playgroups at Legend Park.
- This is a successful program that should be extended here to support our families and community.

**Question Three:****a) Which centre would be your preferred playgroup venue?**

- 52 respondents prefer Legend Park as playgroup venue.
- 15 respondents prefer Mulgrave as playgroup venue.
- 3 respondents responded that Legend Park and Mulgrave were equally acceptable.

**Question Four:****a) Do you have any other feedback for Council about the potential move of the playgroup?**

The following comments were provided:

- Please leave at Legend Park. It is a wonderful facility indoors and outdoors.
- There is a wetland next to Legend Park – it is good for kids.
- The success of 3 days should be an indicator of ongoing success.
- We love the playgroup!
- Open playgroup longer hours and more days.
- Please do not move – just make Legend Park 5 days.
- We feel a sense of belonging and we are welcomed here.

- Our children have flourished here at Legend Park.
- More inclusion for babies and children under 24 months.
- Split up the groups according to residential address.
- Grandparents can't drive.
- I love the playgroup activities.
- Can we start a bit earlier and more days?
- Please offer separate 3 and 4 year old kindergarten programs at Legend Park.
- Please consider parking spaces for parents and grandparents.
- It would be great to have a dedicated space at Mulgrave just for playgroup. Then we are not encroaching on the playgroup as much.
- Be good to have a playgroup in Notting Hill.

**b) Additional comments tendered by one respondent**

- There has been pressure on playgroup families from the kindergarten not to support an extension to playgroups at Legend Park on a 5 days per week basis.
- It has been informally asserted by a member or members of the kindergarten community that playgroup families could cause kindergarten staff to lose their jobs.

**Question Five:**

**a) What suburb do you live in?**

Survey respondents reported living in the following suburbs:

- Glen Waverley (42 respondents)
- Wheelers Hill (8 respondents)
- Mount Waverley (7 respondents)
- Mulgrave (4 respondents)
- Notting Hill (3 respondents)
- Burwood East (2 respondents)
- Oakleigh (1 respondent)
- Oakleigh East (1 respondent)
- Springvale (1 respondent)
- Chadstone (1 respondent).

## **B. Results of Small Group Supported Playgroup Questions**

A total of seven (7) small group survey responses were received.

### ***Question One:***

#### **a) Would you attend playgroup if it relocated to Mulgrave Community Centre?**

- 1 respondent indicated that they would attend playgroup in Mulgrave.
- 6 respondents stated that they would not attend playgroup in Mulgrave.

#### **b) If not, why not?**

The reasons stated for not attending playgroup at Mulgrave were as follows:

- Too far to travel (2 respondents).
- I can walk and don't always have a car.
- Mobility.
- Would prefer close to Chadstone.

### ***Question Two:***

**If you chose to attend the larger playgroup and it was at a different location to the small playgroup you currently attend where would you prefer to go – Legend Park in Glen Waverley or Mulgrave Community Centre?**

The following responses were tendered:

- Legend Park (2 respondents)
- Not stated (2 respondents)
- Mulgrave (1 respondent)
- Unsure – probably Legend Park (1 respondent)
- Cabena or Legend Park but Cabena is preferred.

### ***Question Three:***

**Do you have any other feedback for the Council about the potential move of the playgroup?**

The following responses were tendered:

- Please don't move Cabena Playgroup (1 respondent).
- Won't attend if it moves to Mulgrave (1 respondent).

**Question Four:****Which suburb do you live in?**

Survey respondents reported living in the following suburbs:

- Hughesdale (1 respondent)
- Mount Waverley (1 respondent)
- Oakleigh East (1 respondent)
- Chadstone (1 respondent)
- Huntingdale (1 respondent)
- Oakleigh (1 respondent)
- Not stated (1 respondent).

**Concluding comments and considerations for Council**

Users of the large and small supported playgroups were invited to complete separate written surveys to assist Council's planning for the continued provision of flexible and accessible supported playgroups in the municipality.

The survey results, whilst providing a considerable amount of information on user opinions and experience do not indicate a clear way forward. In considering possible directions emanating from the survey responses, the following points may be most relevant to Council's decisions:

- Playgroup respondents enjoyed the social interaction for children and families with many commenting on the benefits of being based in their local community, with ease of access for walkers as well being close to school communities.
- The support provided by facilitating staff was well regarded.
- Small and large playgroup members generally spoke positively of the benefits of current locations, though there was one strong dissenter at Legend Park who expressed concerns about the relationship with the kindergarten that shares the space.
- Whilst there was some willingness to consider travel to Mulgrave for playgroup, large group respondents indicated a strong preference for supported playgroup provision to remain at Legend Park.
- The small playgroup would likely not survive transition to Mulgrave with only one respondent indicating that they would be likely to attend.

Numerous studies have identified benefits associated with local supported playgroup provision. They have been credited with improving parents' social supports and their ability to care for their children, whilst also improving children's sociability and opportunities to learn. As well as the direct social and educational benefits they are also recognised for providing ease of entry to other services.

It is suggested that Council consider:

- a) Continuation of small and large supported playgroup provision from the current venues;  
and
- b) Concurrently, conduct a review on the need for supported playgroup provision in the Mulgrave area as a separate and complimentary service.



## Potential move of Legend Park Supported Playgroup to Mulgrave Community Centre Parent Questions:



### Introduction:

Council is currently considering moving the playgroup to a new venue that will allow for a great deal more flexibility for playgroups to be over 5 days per week instead of 3 days.

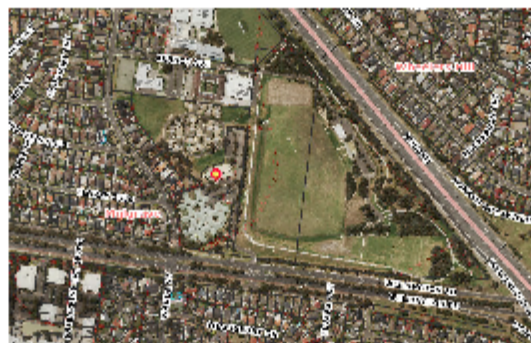
If this does occur, it will not happen until toward the end of 2020.

As the users of the playgroup, your opinions and ideas are very important in advising and guiding the Council.

The possible new venue is the Mulgrave Community Centre on Wellington Road in Mulgrave (see red dot on map below). The area being considered is the west end of the current building. There is considerable parking and green open space in this area. It is co-located with the Monash Gardens Aged Care facility and Mazenod College.

If the move goes ahead it will require some building work to be done internally and a new outdoor play space to be provided.

We are wanting to know:	
<b>Q1 If we were to offer additional days at Mulgrave Community Centre for a playgroup would you attend?</b>	
<input type="checkbox"/> Yes	<input type="checkbox"/> No
If not, why not?	
<b>Q2 Would you consider alternating between the Legend Park centre and the Mulgrave Community Centre for playgroup?</b>	
<input type="checkbox"/> Yes	<input type="checkbox"/> No
If not, why not?	
<b>Q3 Which centre would be your preferred playgroup venue?</b>	
<input type="checkbox"/> Legend Park	<input type="checkbox"/> Mulgrave Community Centre
<b>Q4 Do you have any other feedback for Council about the potential move of the playgroup?</b>	
<b>Q5 What suburb do you live in?</b>	



293 Springvale Road (PO Box 1) Glen Waverley VIC 3150 **Web** [www.monash.vic.gov.au](http://www.monash.vic.gov.au) **Email** [mail@monash.vic.gov.au](mailto:mail@monash.vic.gov.au)  
**T** (03) 9518 3555 **F** (03) 9518 3444 **National Relay Service** (for the hearing and speech impaired) 1800 555 660  
**Language Assist** 普通话 9321 5485 Ελληνικά 9321 5482 廣東話 9321 5481 泰米語 7005 3002 Italiano 9321 5483  
 Bahasa Indonesia 7005 3001 ភាសាខ្មែរ 9321 5487 ភាសាសិង្ហបុរី 7005 3003 ភាសាខ្មែរ 9321 5484 ភាសាខ្មែរ 7005 3000

## Potential move of Legend Park Supported Playgroup to Mulgrave Community Centre Small Group Parent Questions:



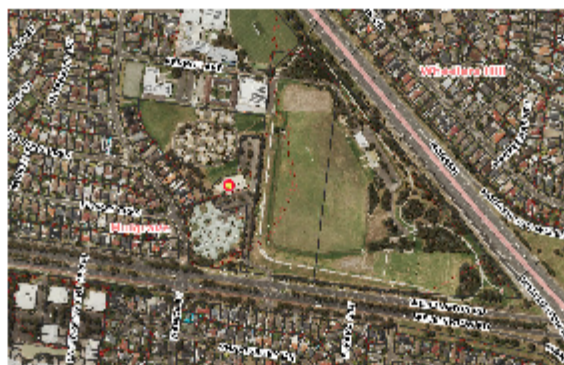
**Introduction:**

Council is currently considering moving the playgroup to a new venue which will allow for a great deal more flexibility for playgroups to be held over 5 days per week instead of 3 days. If this does occur it will not happen until toward the end of 2020. As the users of the playgroup your opinions and ideas are very important in advising and guiding the Council.

The possible new venue is the Mulgrave Community Centre on Wellington Road in Mulgrave (see red dot on map below). The area being considered is the west end of the current building. There is considerable parking and green open space in this area. It is co-located with Monash Gardens Aged Care facility and Mazenod College.

If the move goes ahead it will require some building work to be done internally and a new outdoor play space to be provided.

<b>We are wanting to know:</b>	
<b>Q1 Would you attend playgroup if it relocated to Mulgrave Community Centre?</b>	
<input type="checkbox"/> Yes	<input type="checkbox"/> No
<b>If not, why not?</b>	
<b>Q2 If you chose to attend the larger playgroup and it was at a different location to the small playgroup you currently attend where would you prefer to go – Legend Park in Glen Waverley or Mulgrave CC in Mulgrave?</b>	
<b>Q3 Do you have any other feedback for the Council about the potential move of the playgroup?</b>	
<b>Q4 Which suburb do you live in?</b>	



293 Springvale Road (PO Box 1) Glen Waverley VIC 3150 **Web** [www.monash.vic.gov.au](http://www.monash.vic.gov.au) **Email** [mail@monash.vic.gov.au](mailto:mail@monash.vic.gov.au)  
**T** (03) 9518 3555 **F** (03) 9518 3444 **National Relay Service** (for the hearing and speech impaired) 1800 555 660  
**Language Assist** 普通话 9321 5485 Ελληνικά 9321 5482 廣東話 9321 5481 বাংলা 7005 3002 Italiano 9321 5483  
 Bahasa Indonesia 7005 3001 **විද්‍යා මාලාව** 9321 5487 **മലയാളം** 7005 3003 **한국어** 9321 5484 **தமிழ்** 7005 3000