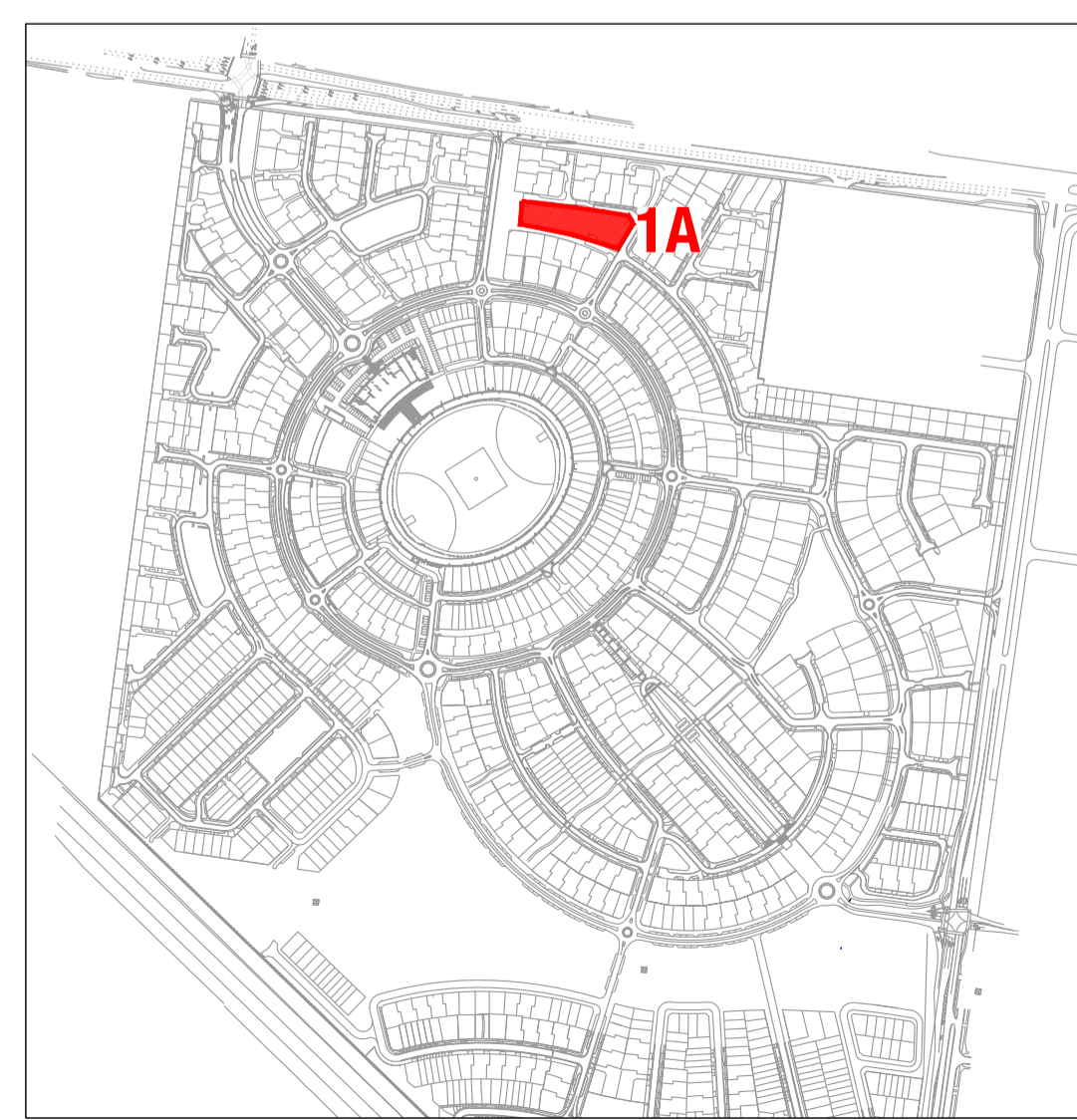


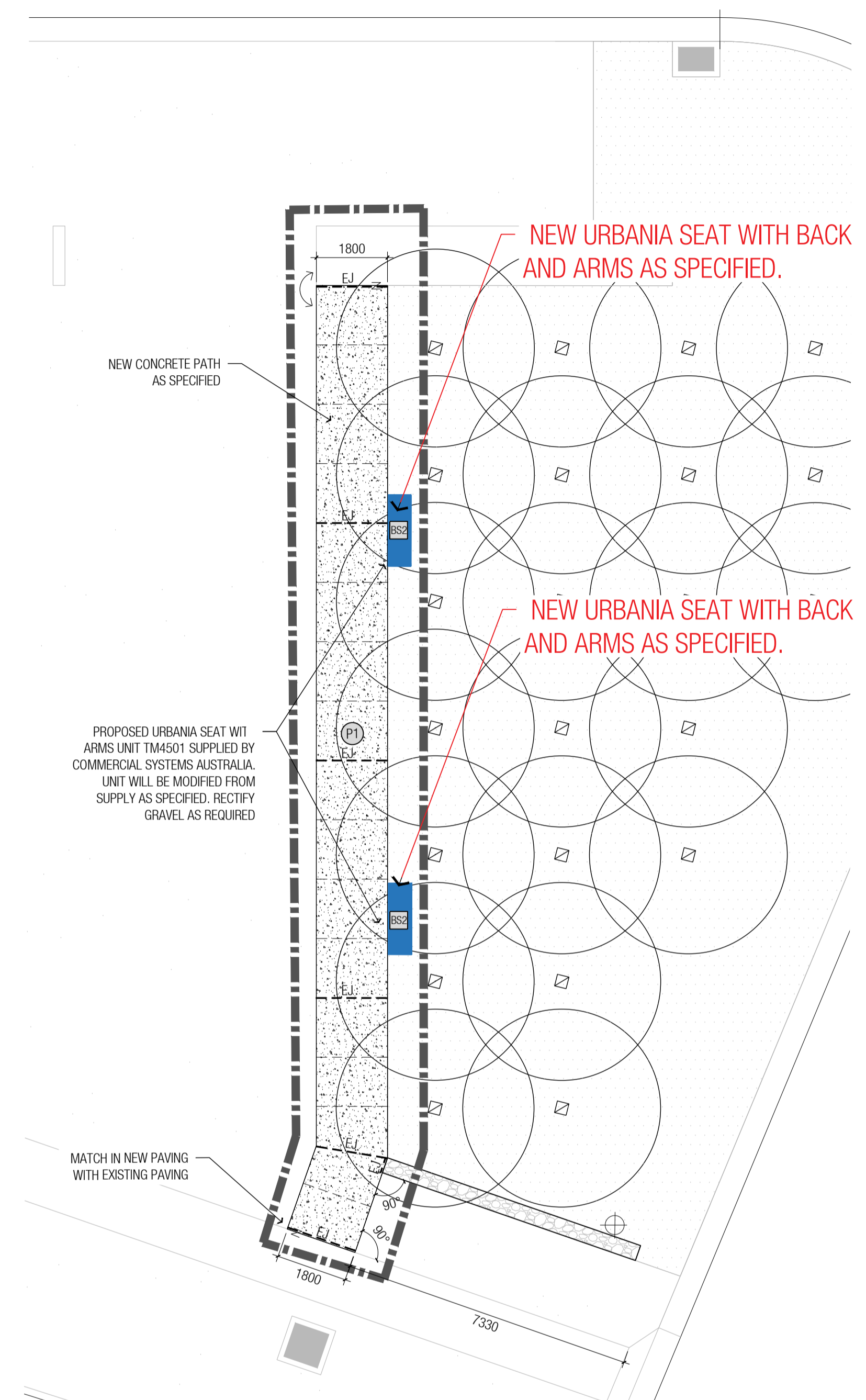
1 WEST



LOCATION PLAN SCALE 1:7500



KEY PLAN SCALE 1:1000



2 EAST

LEGEND

- PROPOSED CONCRETE PATH AS SPECIFIED
- PROPOSED CONCRETE SLAB AS SPECIFIED
- EXISTING PAVING TO BE LIFTED AND RE-LAID
- PROPOSED SHELTER AS SPECIFIED
- EXISTING PERGOLA STRUCTURE TO REMAIN
- PROPOSED PICNIC SETTING PS1, AS DETAILED & SPECIFIED
- PROPOSED PICNIC SETTING PS2, AS DETAILED & SPECIFIED
- PROPOSED RUBBISH BINS, AS SPECIFIED
- PROPOSED BICYCLE HOOPS, AS SPECIFIED
- PROPOSED BENCH SEAT WITH BOLT DOWN FIXING AS SPECIFIED
- PROPOSED BENCH SEAT WITH EXTENDED LEG FIXING AS SPECIFIED
- PROPOSED TWO BURNER BBO AS SPECIFIED
- EXISTING TREE TO BE RETAINED & PROTECTED
- EXISTING GARDEN BED
- EXISTING GRAVEL PAVING
- EXISTING RANDOM STONE PAVING
- EXISTING PRECAST CONCRETE PAVERS
- EXISTING FEATURE PAVING
- FLUSH WITH ADJACENT SURFACES
- ALIGN
- EXPANSION JOINT (AS SPECIFIED)
- CONTROL JOINT (AS SPECIFIED)
- EXTENT OF WORKS



- NOTES
1. ALL SETOUTS SHALL BE CHECKED AND APPROVED BY THE SUPERINTENDENT PRIOR TO CONSTRUCTION.
 2. ANY DISCREPANCIES SHALL BE IMMEDIATELY REPORTED TO THE SUPERINTENDENT, WHO SHALL FURTHER ISSUE INSTRUCTIONS.
 3. DO NOT SCALE DRAWINGS. FIGURED DIMENSIONS SHALL HAVE PRECEDENCE OVER SCALED DIMENSIONS.
 4. MATERIAL CODES SHALL HAVE PRECEDENCE OVER HATCHES. WHERE CODES ARE NOT SHOWN, REFER TO HATCH TYPE. WHERE DISCREPANCIES OR OMITTED DATA OCCUR, REFER TO SUPERINTENDENT FOR DIRECTION.
 5. ALL SHOP DRAWINGS SHALL BE SUBMITTED TO THE SUPERINTENDENT FOR APPROVAL PRIOR TO FABRICATION.
 6. ALL FABRICATED ITEMS SHALL BE INSPECTED AND APPROVED BY THE SUPERINTENDENT PRIOR TO INSTALLATION.
 7. THE CONTRACTOR SHALL LOCATE ALL SUBSURFACE SERVICES ETC. PRIOR TO EXCAVATION AND PROTECT SAME DURING CONSTRUCTION.
 8. SERVICES LOCATION SHOWN ARE INDICATIVE ONLY. LOCATE ALL SERVICES ON SITE PRIOR TO PLANTING AND RELOCATE TREES TO 0.50M MIN. FROM SERVICES TO SUPERINTENDENTS APPROVAL.

REV.	DESCRIPTION	INT.	DATE
5	FOR COUNCIL APPROVAL	FJ	23.04.19
4	ISSUED FOR TENDER	FJ	07.08.18
3	FOR TENDER	FJ	02.08.18
2	FOR TENDER	FJ	29.03.18
1	FOR COUNCIL APPROVAL	FJ	07.12.17

MDG Landscape Architects
 Level 3, 141 Flinders Lane
 Melbourne, Victoria 3000 Australia
 T: (03) 9650 6600
 E: mail@mdgla.com.au

UPDATES LEGEND

- EXISTING BENCH TO BE RETAINED IN CURRENT LOCATION OR RELOCATED, IN LIEU OF REPLACING WITH NEW SEAT
- NEW SEAT WITH BACK AND ARM RESTS AS PREVIOUSLY DOCUMENTED
- 2M PICNIC SETTING TO REPLACE 3M BANQUET TABLE

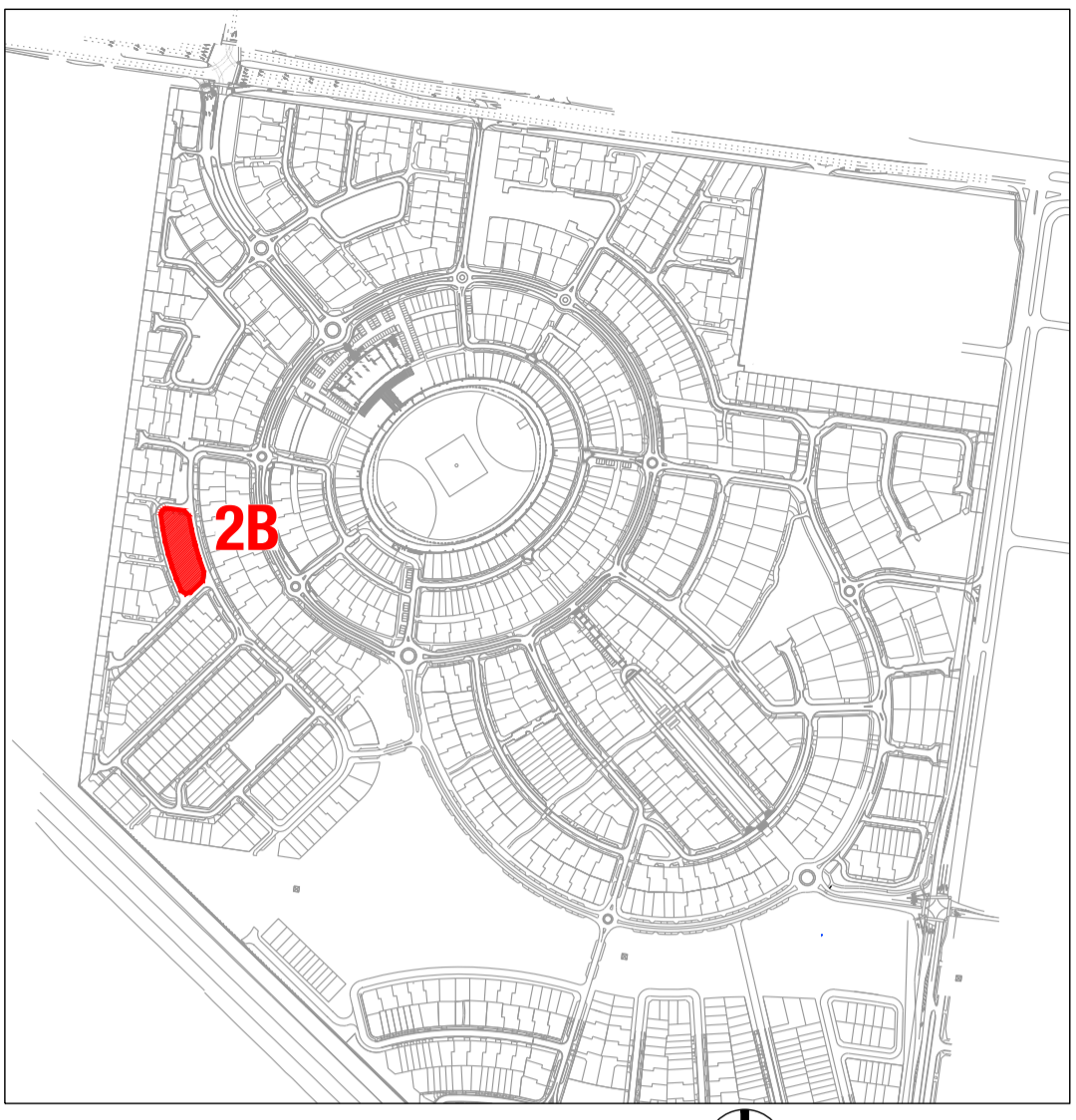
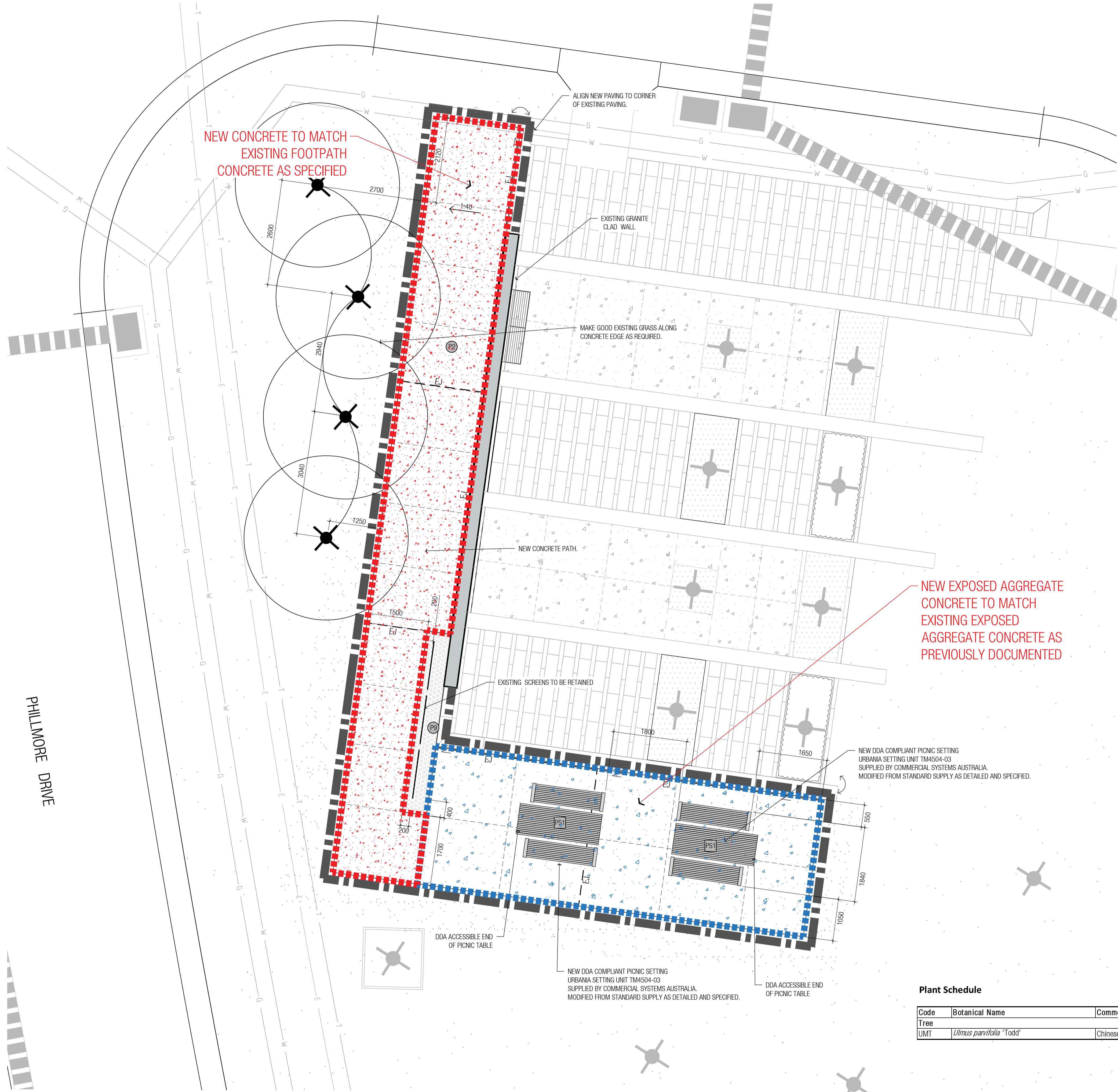
MIRVAC
 WAVERLEY PARK

STAGE 1A PARK UPGRADE
 MATERIALS AND SETOUT PLAN

DATE	SCALE
August 2018	1:100 AT A1

CHECKED	DRAWN
SS	FJ

DRAWING NO.	REVISION
S01AP-L8402	5



- ### LEGEND
- PROPOSED EXPOSED AGGREGATE CONCRETE PATH/SLAB AS SPECIFIED
 - PROPOSED GRAVEL PAVING AS SPECIFIED
 - PROPOSED PICNIC SETTING 'PS1', AS SPECIFIED
 - EXISTING GRASS TO BE RETAINED
 - EXISTING GRASS TO BE RETAINED AND MADE GOOD POST CONSTRUCTION AS REQUIRED.
 - EXISTING TREE TO BE RETAINED
 - PROPOSED TREE
 - EXISTING GRANITE STONE PAVING
 - EXISTING EXPOSED AGGREGATE CONCRETE PAVING
 - EXTENT OF WORKS
 - SAW CUT CONTROL JOINTS
 - EXPANSION JOINTS
 - FINISHES TO BE INSTALLED FLUSH WITH EXISTING SURFACE
 - ALIGN



- ### NOTES
1. ALL SETOUTS SHALL BE CHECKED AND APPROVED BY THE SUPERINTENDENT PRIOR TO CONSTRUCTION.
 2. ANY DISCREPANCIES SHALL BE IMMEDIATELY REPORTED TO THE SUPERINTENDENT, WHO SHALL FURTHER ISSUE INSTRUCTIONS.
 3. DO NOT SCALE DRAWINGS. FIGURED DIMENSIONS SHALL HAVE PRECEDENCE OVER SCALED DIMENSIONS.
 4. MATERIAL CODES SHALL HAVE PRECEDENCE OVER HATCHES. WHERE CODES ARE NOT SHOWN, REFER TO HATCH TYPE. WHERE DISCREPANCIES OR OMITTED DATA OCCUR, REFER TO SUPERINTENDENT FOR DIRECTION.
 5. ALL SHOP DRAWINGS SHALL BE SUBMITTED TO THE SUPERINTENDENT FOR APPROVAL PRIOR TO FABRICATION.
 6. ALL FABRICATED ITEMS SHALL BE INSPECTED AND APPROVED BY THE SUPERINTENDENT PRIOR TO INSTALLATION.
 7. THE CONTRACTOR SHALL LOCATE ALL SUBSURFACE SERVICES ETC. PRIOR TO EXCAVATION AND PROTECT SAME DURING CONSTRUCTION.
 8. SERVICES LOCATION SHOWN ARE INDICATIVE ONLY. LOCATE ALL SERVICES ON SITE PRIOR TO PLANTING AND RELOCATE TREES TO 0.50M MIN. FROM SERVICES TO SUPERINTENDENTS APPROVAL.

REV.	DESCRIPTION	INT.	DATE
6	FOR COUNCIL APPROVAL	FJ	24.04.19
5	ISSUED FOR TENDER	FJ	07.08.18
4	FOR TENDER	FJ	02.08.18
3	FOR TENDER	FJ	29.03.18
2	FOR COUNCIL APPROVAL	FJ	19.12.17
1	FOR COUNCIL APPROVAL	FJ	24.10.17

- ### UPDATES LEGEND
- DOCUMENTED MATERIAL SPECIFICATION ADJUSTED AS NOTED
 - DOCUMENTED MATERIAL SPECIFICATION ADJUSTED AS NOTED

MDG Landscape Architects
 Level 3, 141 Flinders Lane
 Melbourne, Victoria 3000 Australia
 T: (03) 9650 6600
 E: mail@mdgla.com.au

MIRVAC WAVERLEY PARK

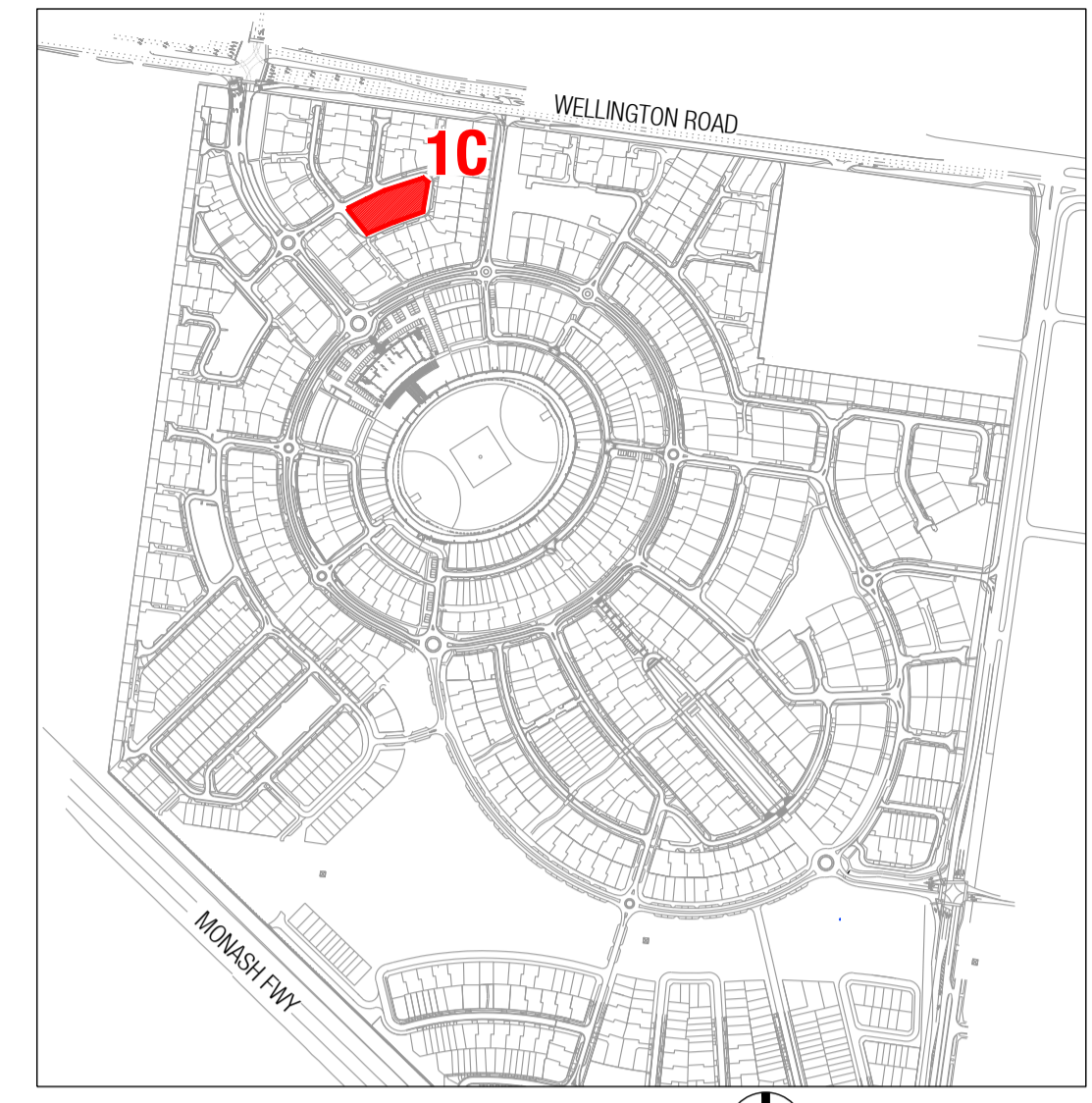
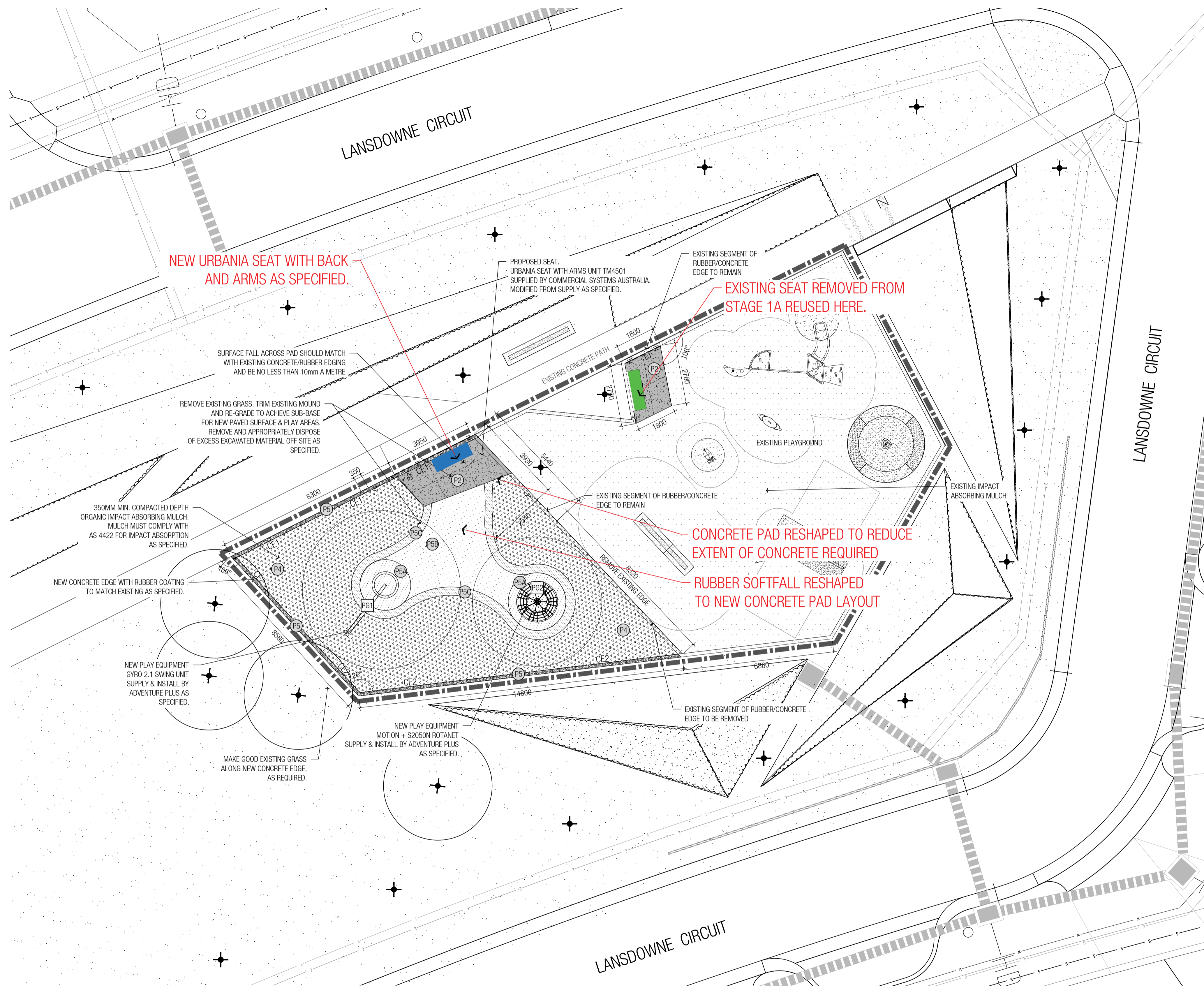
STAGE 2B PARK UPGRADE MATERIALS, SETOUT & PLANTING PLAN

DATE	SCALE
August 2018	1:50 @ A1
FILE PATH	
J:\Waverley Park\Park Upgrades\6. Documentation\STAGE 2B PARK\1614B Stage 2B Park Upgrades	
CHECKED	DRAWN
SS	FJ
DRAWING NO.	REVISION
S02BP-L8402	6

Plant Schedule

Code	Botanical Name	Common Name	Pot Size	No. per m ²	Install Height	Caliper	Quantity
Tree							
UMT	<i>Ulmus parvifolia</i> 'Todd'	Chinese Elm	100L	As Shown	2.6-2.8m	30mm	4

PHILLMORE DRIVE



LOCATION PLAN SCALE 1 : 7500

- ### LEGEND
- PROPOSED EXPOSED AGGREGATE PAVING WITH CONTROL JOINTS AS SPECIFIED
 - PROPOSED IMPACT ABSORBING MULCH AS SPECIFIED
 - PROPOSED CONCRETE EDGE WITH RUBBER COATING TO MATCH EXISTING (R3) AS SPECIFIED
 - PROPOSED SYNTHETIC RUBBER SURFACE COLOUR - BLACK TO MATCH EXISTING (R1) AS SPECIFIED
 - PROPOSED SYNTHETIC RUBBER SURFACE COLOUR - BLUE FLECK AS SPECIFIED
 - PROPOSED SYNTHETIC RUBBER SURFACE COLOUR - RED FLECK AS SPECIFIED
 - PROPOSED TURF TO REPLACE GARDEN BED AS SPECIFIED
 - EXISTING IMPACT ABSORBING MULCH
 - NEW PLAY EQUIPMENT GYRO SWING UNIT AS SPECIFIED
 - NEW PLAY EQUIPMENT MOTION + S2050N ROTANET AS SPECIFIED
 - PROPOSED SEAT, BOLT DOWN FIXING AS SPECIFIED
 - PROPOSED TREE
 - EXISTING SYNTHETIC RUBBER SURFACE
 - EXISTING GRASS TO BE RETAINED AND MADE GOOD POST CONSTRUCTION AS SPECIFIED
 - EXTENT OF WORKS
 - EXISTING TREE
 - EXPANSION JOINT
 - CONTROL JOINT
 - FINISHES TO BE INSTALLED FLUSH WITH EXISTING SURFACE



- ### NOTES
1. ALL SETOUTS SHALL BE CHECKED AND APPROVED BY THE SUPERINTENDENT PRIOR TO CONSTRUCTION.
 2. ANY DISCREPANCIES SHALL BE IMMEDIATELY REPORTED TO THE SUPERINTENDENT, WHO SHALL FURTHER ISSUE INSTRUCTIONS.
 3. DO NOT SCALE DRAWINGS. FIGURED DIMENSIONS SHALL HAVE PRECEDENCE OVER SCALED DIMENSIONS.
 4. MATERIAL CODES SHALL HAVE PRECEDENCE OVER HATCHES. WHERE CODES ARE NOT SHOWN, REFER TO HATCH TYPE. WHERE DISCREPANCIES OR OMITTED DATA OCCUR, REFER TO SUPERINTENDENT FOR DIRECTION.
 5. ALL SHOP DRAWINGS SHALL BE SUBMITTED TO THE SUPERINTENDENT FOR APPROVAL PRIOR TO FABRICATION.
 6. ALL FABRICATED ITEMS SHALL BE INSPECTED AND APPROVED BY THE SUPERINTENDENT PRIOR TO INSTALLATION.
 7. THE CONTRACTOR SHALL LOCATE ALL SUBSURFACE SERVICES ETC. PRIOR TO EXCAVATION AND PROTECT SAME DURING CONSTRUCTION.
 8. SERVICES LOCATION SHOWN ARE INDICATIVE ONLY. LOCATE ALL SERVICES ON SITE PRIOR TO PLANTING AND RELOCATE TREES TO 0.50M MIN. FROM SERVICES TO SUPERINTENDENTS APPROVAL.

REV.	DESCRIPTION	INT.	DATE
5	FOR COUNCIL APPROVAL	FJ	24.04.19
4	ISSUED FOR TENDER	FJ	07.08.18
3	FOR TENDER	FJ	02.08.18
2	FOR TENDER	FJ	29.03.18
1	FOR COUNCIL APPROVAL	FJ	24.10.17

MDG Landscape Architects
 Level 3, 141 Flinders Lane
 Melbourne, Victoria 3000 Australia
 T: (03) 9650 6000
 E: mail@mdga.com.au

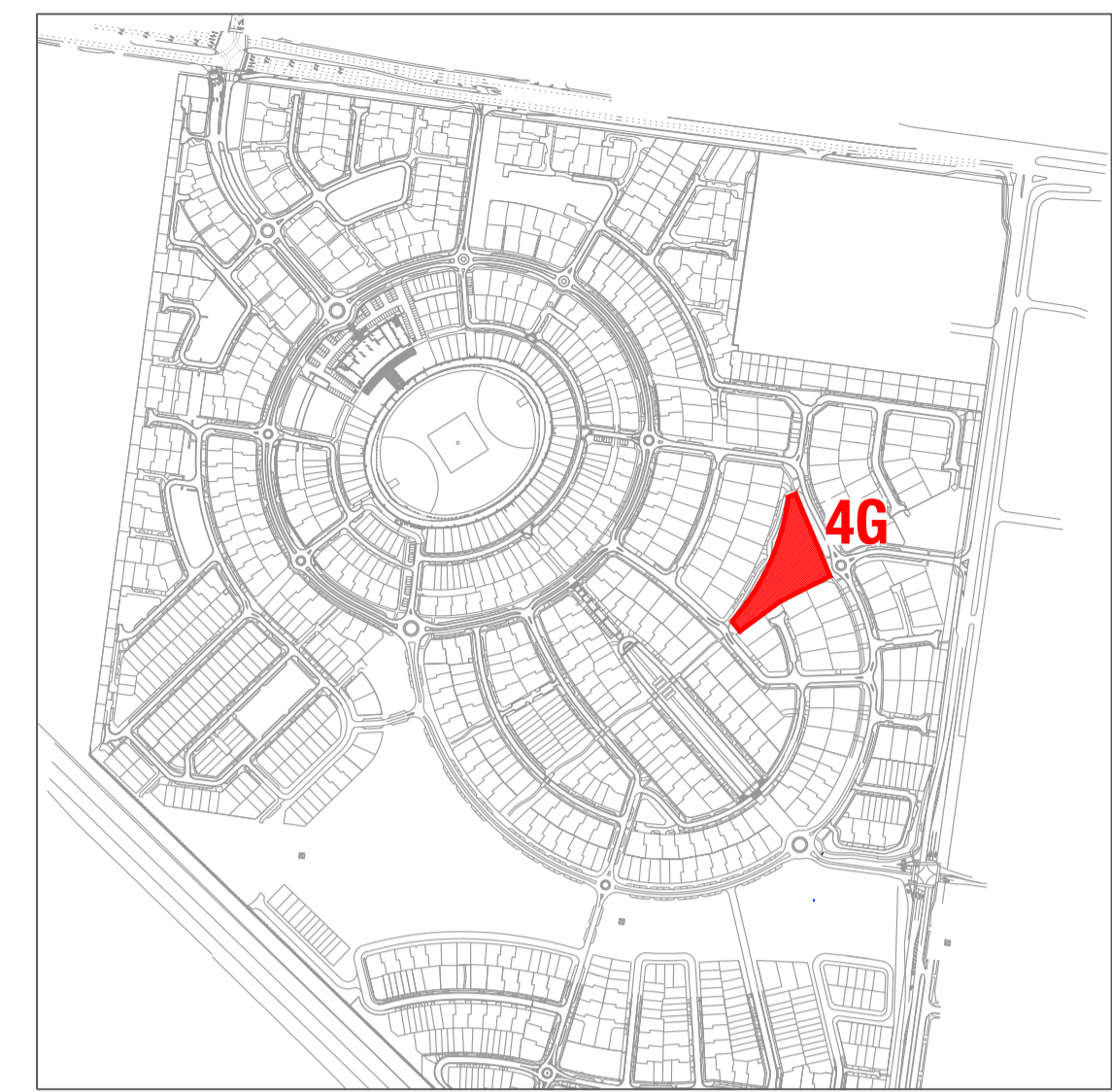
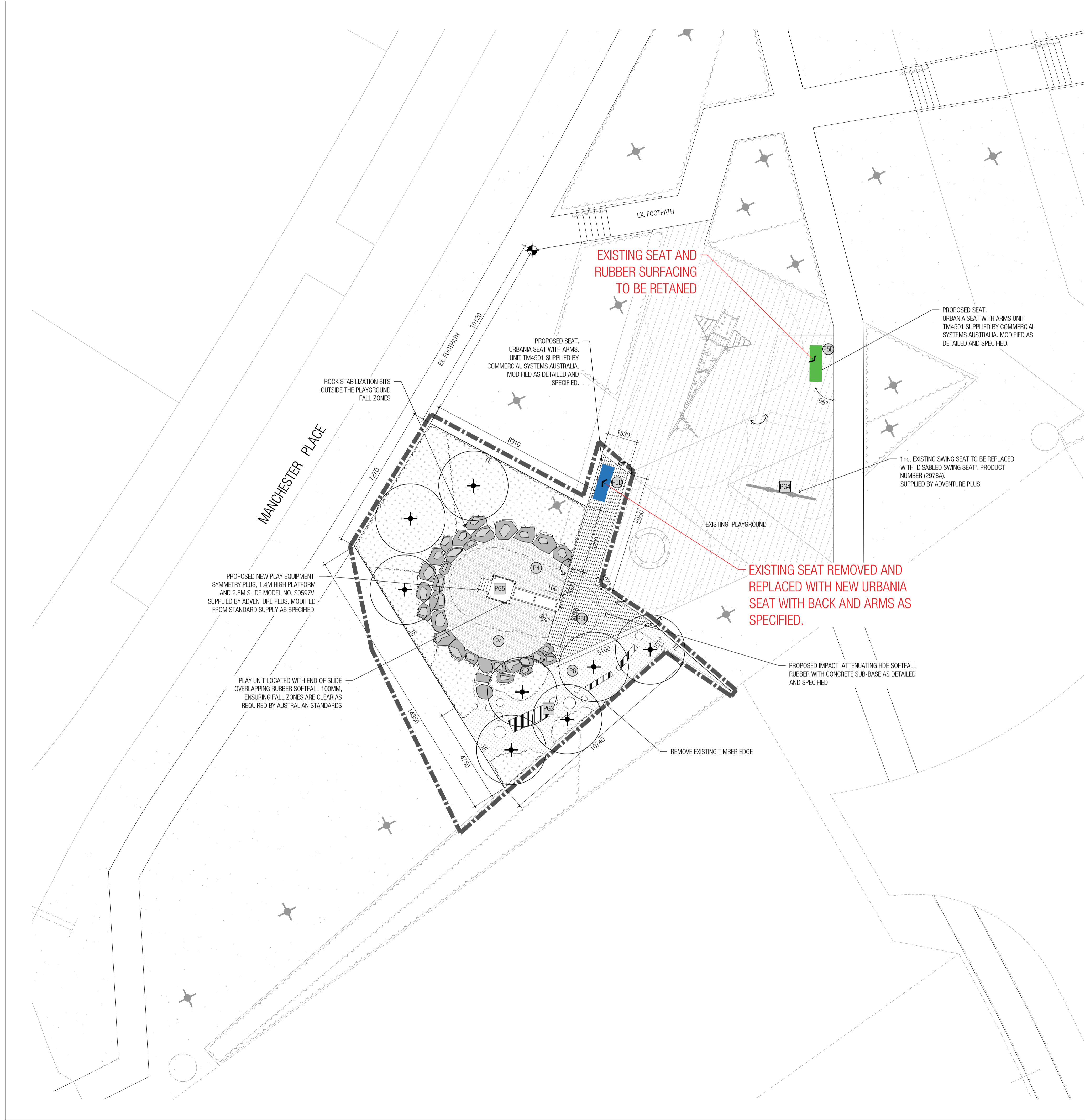
UPDATES LEGEND

- EXISTING BENCH TO BE RETAINED IN CURRENT LOCATION OR RELOCATED, IN LIEU OF REPLACING WITH NEW SEAT
- NEW SEAT WITH BACK AND ARM RESTS AS PREVIOUSLY DOCUMENTED

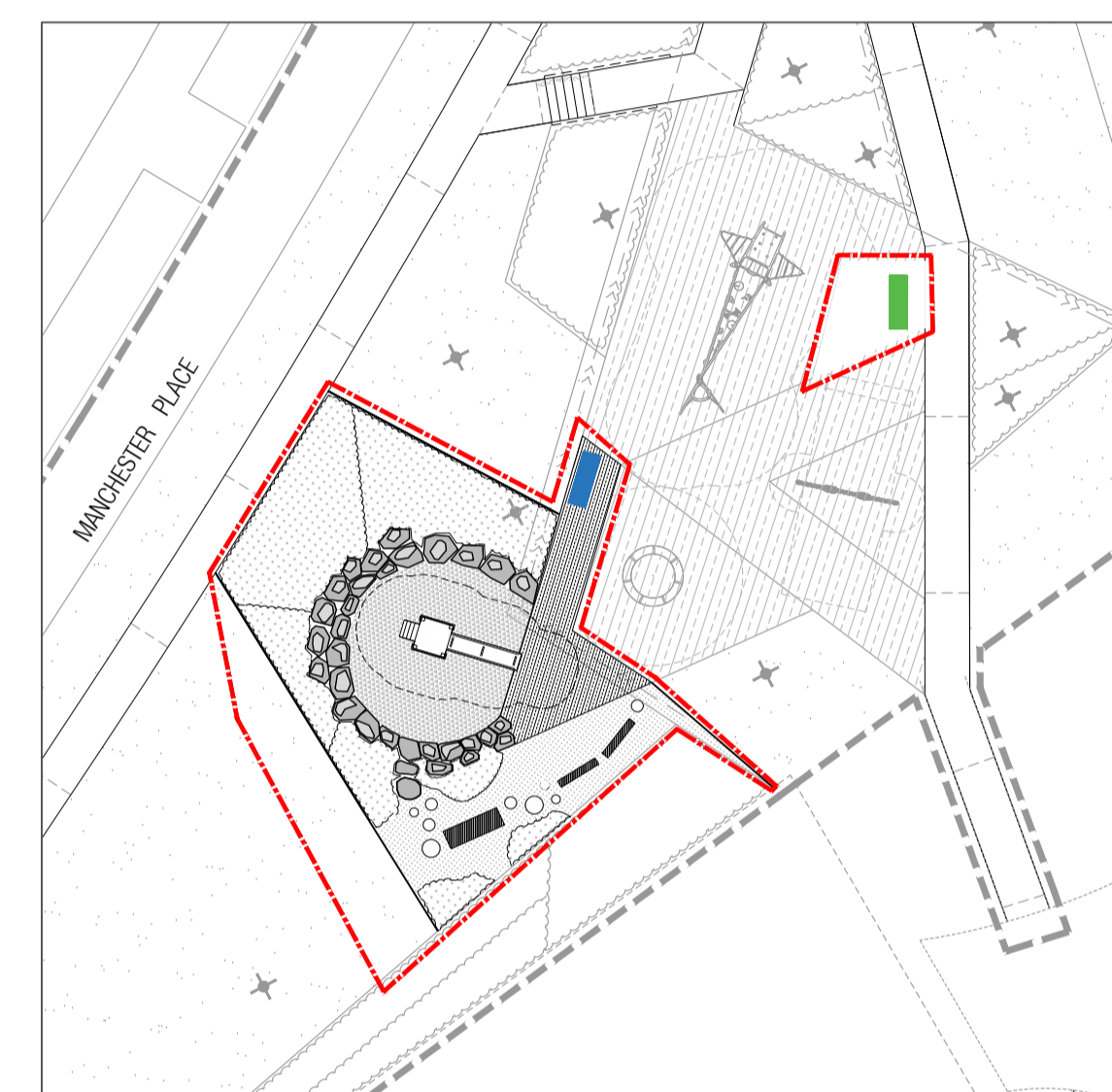
MIRVAC WAVERLEY PARK

STAGE 1C PARK UPGRADE MATERIALS & SETOUT PLAN

DATE	SCALE
August 2018	1:100 @ A1
FILE PATH	
J:\Waverley Park\Park Upgrades\6. Documentation\STAGE 1C PARK\1614B Stage 1C Park Upgrades	
CHECKED	DESIGN
SS	FJ
DRAWING NO.	REVISION
S01CP - L8402	5



LOCATION PLAN SCALE 1 : 7500



WORKS BOUNDARY KEY PLAN SCALE 1 : 1000

LEGEND

- PROPOSED 300MM SETTLED IMPACT ABSORBING ORGANIC MULCH (AS SPECIFIED)
- PROPOSED RUBBER SOFTFALL SURFACE ON NEW CONCRETE (AS SPECIFIED)
- NEW PLAY AREA 100MM ORGANIC MULCH (AS SPECIFIED)
- NEW GARDEN BED INCL. ORGANIC MULCH (AS SPECIFIED)
- PROPOSED SEAT WITH BOLT DOWN FIXING AS SPECIFIED
- PROPOSED NATURE PLAY LOGS AS SPECIFIED
- PROPOSED ACCESSIBLE SWING SEAT AS SPECIFIED
- PROPOSED CUSTOM PLAY UNIT AS SPECIFIED
- PROPOSED TREE AS SPECIFIED
- EXISTING TREE
- EXISTING GRASS TO BE RETAINED
- EXTENT OF WORKS
- PROPOSED TIMBER EDGE (AS SPECIFIED)
- PROPOSED ROCKWORK BANK STABILIZATION, AS DETAILED AND SPECIFIED.
- PROPOSED STEPPING STONES, AS DETAILED AND SPECIFIED
- EXISTING SYNTHETIC EPDM RUBBER
- FINISHES TO BE INSTALLED FLUSH WITH EXISTING SURFACE
- ALIGN
- ORIGIN



- NOTES**
1. ALL SETOUTS SHALL BE CHECKED AND APPROVED BY THE SUPERINTENDENT PRIOR TO CONSTRUCTION.
 2. ANY DISCREPANCIES SHALL BE IMMEDIATELY REPORTED TO THE SUPERINTENDENT, WHO SHALL FURTHER ISSUE INSTRUCTIONS.
 3. DO NOT SCALE DRAWINGS. FIGURED DIMENSIONS SHALL HAVE PRECEDENCE OVER SCALED DIMENSIONS.
 4. MATERIAL CODES SHALL HAVE PRECEDENCE OVER HATCHES. WHERE CODES ARE NOT SHOWN, REFER TO HATCH TYPE. WHERE DISCREPANCIES OR OMITTED DATA OCCUR, REFER TO SUPERINTENDENT FOR DIRECTION.
 5. ALL SHOP DRAWINGS SHALL BE SUBMITTED TO THE SUPERINTENDENT FOR APPROVAL PRIOR TO FABRICATION.
 6. ALL FABRICATED ITEMS SHALL BE INSPECTED AND APPROVED BY THE SUPERINTENDENT PRIOR TO INSTALLATION.
 7. THE CONTRACTOR SHALL LOCATE ALL SUBSURFACE SERVICES ETC. PRIOR TO EXCAVATION AND PROTECT SAME DURING CONSTRUCTION.
 8. SERVICES LOCATION SHOWN ARE INDICATIVE ONLY. LOCATE ALL SERVICES ON SITE PRIOR TO PLANTING AND RELOCATE TREES TO 0.50M MIN. FROM SERVICES TO SUPERINTENDENTS APPROVAL.

REV.	DESCRIPTION	INT.	DATE
5	FOR COUNCIL REVIEW	FJ	24.04.19
4	ISSUED FOR TENDER	FJ	07.08.18
3	FOR TENDER	FJ	02.08.18
2	FOR TENDER	FJ	29.03.18
1	FOR COUNCIL APPROVAL	FJ	15.11.17

MDG Landscape Architects
 Level 3, 141 Flinders Lane
 Melbourne, Victoria 3000 Australia
 T: (03) 9650 6600
 E: mail@mdg.com.au

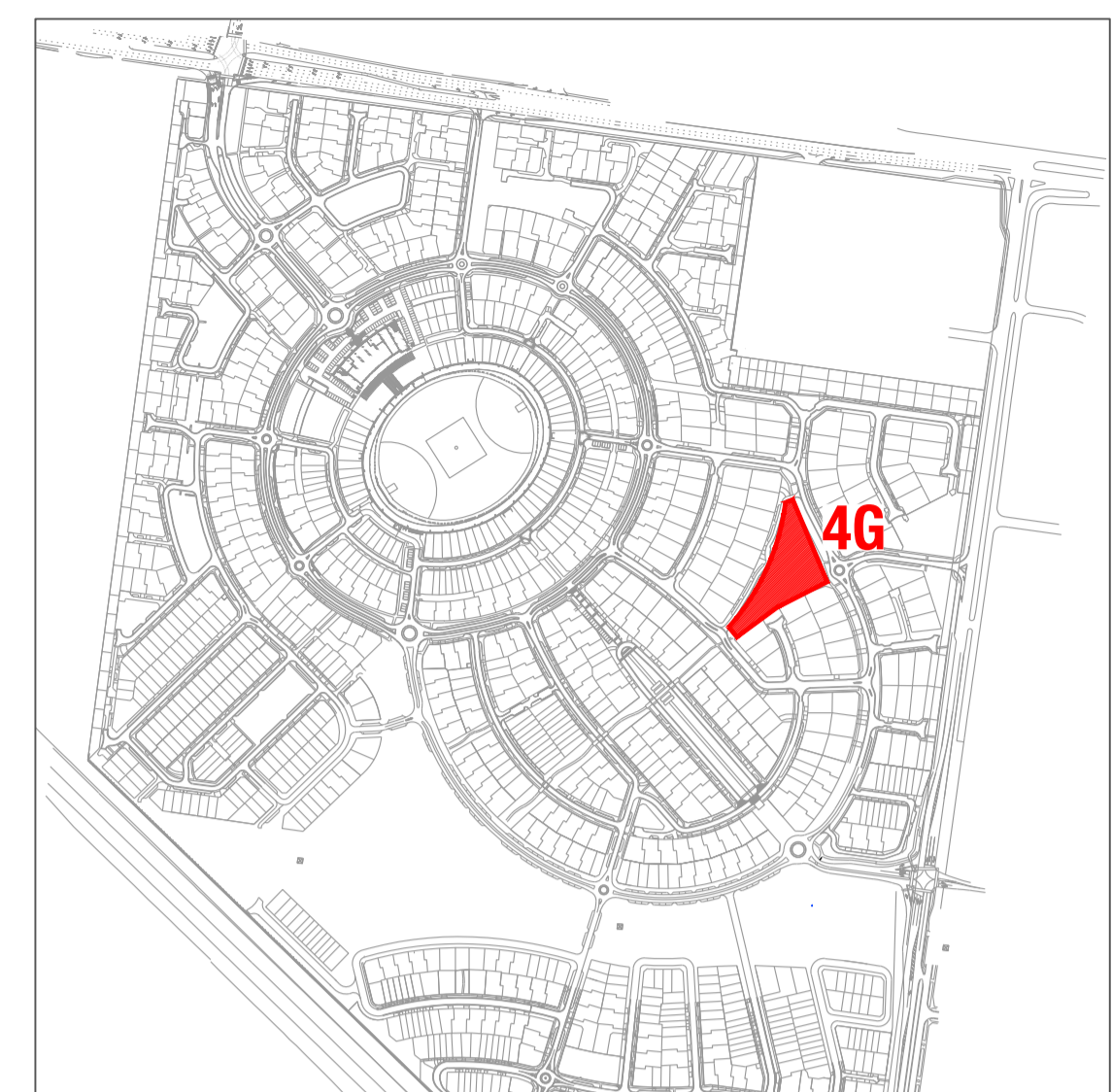
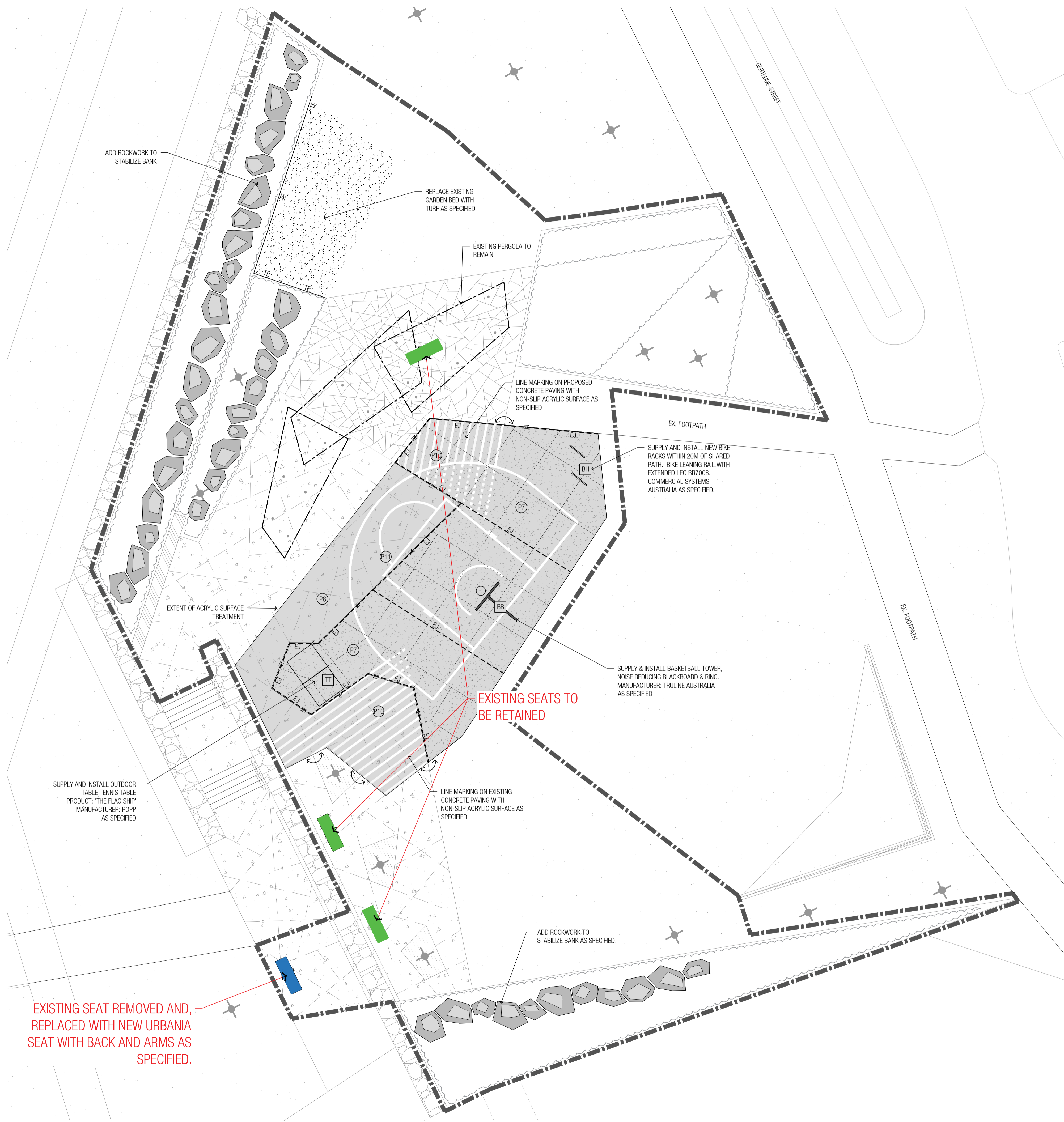
**MIRVAC
 WAVERLEY PARK**

**STAGE 4G PARK - UPPER TERRACE UPGRADE
 MATERIALS AND SETOUT PLAN**

DATE	SCALE
August 2018	1:100 @ A1
FILE PATH	
J:\Waverley Park\Park Upgrades\6. Documentation\STAGE 4G PARK\16148 Stage4G Upper Park Upgrades	
CHECKED	DRAWN
SS	FJ
DRAWING NO.	REVISION
S04GP-L8402	5

UPDATES LEGEND

- EXISTING BENCH TO BE RETAINED IN CURRENT LOCATION OR RELOCATED. IN LIEU OF REPLACING WITH NEW SEAT
- NEW SEAT WITH BACK AND ARM RESTS AS PREVIOUSLY DOCUMENTED



LOCATION PLAN SCALE 1 : 7500

- ### LEGEND
- EXISTING TREE
 - PROPOSED CONCRETE PAVING, WITH NON-SLIP ACRYLIC SURFACE, AS SPECIFIED
 - EXISTING CONCRETE PAVING, WITH NON-SLIP ACRYLIC SURFACE, AS SPECIFIED
 - DECORATIVE LINE MARKING ON NON-SLIP ACRYLIC SPORTS SURFACE, AS SPECIFIED
 - PROPOSED PAINTED BASKETBALL LINEWORK AS SPECIFIED
 - CONTROL JOINT (AS SPECIFIED)
 - EXPANSION JOINT (AS SPECIFIED)
 - EXISTING STONE PAVING
 - EXISTING EXPOSED AGGREGATE
 - EXISTING GARDEN BED
 - PROPOSED BOULDERS IN GARDEN BED, AS SPECIFIED
 - EXISTING GRASS TO BE RETAINED
 - PROPOSED TURF AS SPECIFIED
 - PROPOSED TIMBER EDGE AS SPECIFIED
 - PROPOSED SEAT, BOLT DOWN FIXING AS SPECIFIED
 - EXTENT OF WORKS
 - PROPOSED TABLE TENNIS TABLE AS SPECIFIED
 - PROPOSED BASKET BALL HOOP WITH NOISE REDUCING BACKBOARD, AS SPECIFIED
 - PROPOSED BIKE HOOPS AS SPECIFIED
 - FLUSH WITH ADJACENT SURFACE
 - ALIGN
 - EXISTING RENDERED & PAINTED REINFORCED BLOCKWORK SEATING WALL WITH GRANITE CAPPING
 - EXISTING GABION ROCK WALL
 - EXISTING PERGOLA TO REMAIN
 - EXISTING GRAVEL PAVING

- ### NOTES
1. ALL SETOUTS SHALL BE CHECKED AND APPROVED BY THE SUPERINTENDENT PRIOR TO CONSTRUCTION.
 2. ANY DISCREPANCIES SHALL BE IMMEDIATELY REPORTED TO THE SUPERINTENDENT, WHO SHALL FURTHER ISSUE INSTRUCTIONS.
 3. DO NOT SCALE DRAWINGS. FIGURED DIMENSIONS SHALL HAVE PRECEDENCE OVER SCALED DIMENSIONS.
 4. MATERIAL CODES SHALL HAVE PRECEDENCE OVER HATCHES. WHERE CODES ARE NOT SHOWN, REFER TO HATCH TYPE. WHERE DISCREPANCIES OR OMITTED DATA OCCUR, REFER TO SUPERINTENDENT FOR DIRECTION.
 5. ALL SHOP DRAWINGS SHALL BE SUBMITTED TO THE SUPERINTENDENT FOR APPROVAL PRIOR TO FABRICATION.
 6. ALL FABRICATED ITEMS SHALL BE INSPECTED AND APPROVED BY THE SUPERINTENDENT PRIOR TO INSTALLATION.
 7. THE CONTRACTOR SHALL LOCATE ALL SUBSURFACE SERVICES ETC. PRIOR TO EXCAVATION AND PROTECT SAME DURING CONSTRUCTION.
 8. SERVICES LOCATION SHOWN ARE INDICATIVE ONLY. LOCATE ALL SERVICES ON SITE PRIOR TO PLANTING AND RELOCATE TREES TO 0.50M MIN. FROM SERVICES TO SUPERINTENDENTS APPROVAL.

REV.	DESCRIPTION	INT.	DATE
5	FOR COUNCIL APPROVAL	FJ	23.04.2019
4	ISSUED FOR TENDER	FJ	07.08.18
3	FOR TENDER	FJ	02.08.18
2	FOR TENDER	FJ	29.03.18
1	FOR COUNCIL APPROVAL	FJ	15.11.17

MDG Landscape Architects
 Level 3, 141 Flinders Lane
 Melbourne, Victoria 3000 Australia
 T: (03) 9650 6600
 E: mail@mdga.com.au

- ### UPDATES LEGEND
- EXISTING BENCH TO BE RETAINED IN CURRENT LOCATION OR RELOCATED. IN LIEU OF REPLACING WITH NEW SEAT
 - NEW SEAT WITH BACK AND ARM RESTS AS PREVIOUSLY DOCUMENTED

MIRVAC

WAVERLEY PARK

STAGE 4G PARK - LOWER TERRACE UPGRADE
 MATERIALS AND SURFACES PLAN

DATE	SCALE
August 2018	1:100 @ A1

FILE PATH: J:\Waverley Park\Park Upgrades\6. Documentation\STAGE 4G PARK\1614B Stage-4G-Lower Park Upgrades

CHECKED	DRAWN
SS	FJ

DRAWING NO.	REVISION
S04GP-L8409	5

EXISTING SEAT REMOVED AND, REPLACED WITH NEW URBANIA SEAT WITH BACK AND ARMS AS SPECIFIED.