

MONASH | AUGUST 2024

BULLETIN



PROTECT OUR TREES JOIN OUR CAMPAIGN

INSIDE THIS ISSUE

■ Mount Waverley Reserve ■ New Playgrounds ■ Illegal Soil Dumping ■ Food Waste Solutions

LET'S PLAY!

Talbot, Highview and more reopen

We're excited to welcome families back to our newly upgraded playspaces, including the expanded Talbot Park playspace in Oakleigh South, which now boasts a wide variety of play equipment, a new picnic shelter with seating and barbecue and additional drainage improvements.

Adventures also await at new playspaces at Highview Park and Diamond Avenue Reserve in Glen Waverley; Cambro Road Reserve in Clayton; and Rembrandt Drive in Wheelers Hill. Playspaces at Portland Street North Reserve in Mulgrave and at Mount Waverley Reserve are scheduled to be completed shortly.

NEW CONSULTATIONS SWING INTO ACTION

Do you live near Queens Parade Reserve in Ashwood, Winbourne Road Reserve in Mount Waverley or Gladeswood Reserve and Albany Drive Reserve in Mulgrave?

We want to hear your ideas on these 2025/26 playspace upgrade designs. **Consultations open until 4 August.**

Help shape your community's playspace at shape.monash.vic.gov.au/playspace-2025-26



SHOVEL AT THE READY, let's get to work

It was hard hats, hi-vis vests and plenty of smiles, as work officially commenced on the new \$9.3 million, two-level sporting pavilion at Mount Waverley Reserve.

With shovel in hand, Monash Mayor, Cr Nicky Luo; the Member for Chisholm, Dr Carina Garland; and the Member for Ashwood, Matt Fregon; got work underway at the official sod-turning ceremony on Friday 31 May.

Deputy Mayor Cr Brian Little and Cr Theo Zographos, along with David Grossman, president of the Mount Waverley Cricket Club, and Chris Hale, president of the Waverley Blues Football Netball Club, were also on hand at the official launch of construction.

Works on the pavilion, delivered as part of the Mount Waverley Reserve Master Plan, started in late-May and are expected to be completed by mid-2025.

shape.monash.vic.gov.au/mount-waverley-reserve-masterplan



SUBURBAN RAIL LOOP – Council advocacy

Earlier this year, Council was invited to provide feedback on the planning directions released for the Victorian Government's Suburban Rail Loop (SRL) precincts around future station locations. In Monash, that is Clayton, Glen Waverley, and Monash (close to Monash University, Clayton).

The SRL is an important transport project for Melbourne, and a

potential game changer for how people travel to, from and around Monash. The Victorian Government is also looking to create greater density of housing and has powers as a planning authority to amend planning controls around the future stations to do this.

Our feedback to the Victorian Government reinforced Council's support for the SRL but continued

our requests for greater detail about the community infrastructure to support this growth – among other feedback.

It is crucial to get the planning for these areas right, and Council will continue to ask the Victorian Government for more genuine input into each step of the process. See our full submission and learn more about Council's advocacy at: shape.monash.vic.gov.au/srl

MESSAGE FROM MAYOR Cr Nicky Luo

In this month's Bulletin, we have another Bulletin full of news and projects in Monash.

We're keen to hear from you all about your thoughts on the future of waste and any ideas you have on waste avoidance and reuse, recycling, litter and our Recycling and Waste Centre. Your voice matters so tell us what you think - more details on page 6.

Recently the Victorian Government announced its draft Housing Targets for Councils, extending the timeline until 2051 to create 800,000 new dwellings state-wide. The announcement outlined draft targets for each municipality.

The draft target for Monash is an additional 72,000 dwellings by 2051, a 92% increase on the current dwellings in Monash.

The Victorian Government is seeking feedback on the draft Housing Targets and Council will prepare a submission to Plan Victoria.

You can view the Housing Target Engage Victoria website here: engage.vic.gov.au/shape-our-victoria

Over a number of years, we have been renewing old playspaces and constructing new ones across Monash to the delight of our youngest residents.

We've recently opened exciting new playspaces at Talbot Park in

Oakleigh South, Highview Park and Diamond Reserve in Glen Waverley and Cambro Road Reserve in Clayton.

I'm thrilled that two of our playspaces, Cameron Avenue and Progress Park, have been named as a Landscape Architecture Award Winner in the playspaces category at the 2024 AILA Victoria Landscape Architecture Awards.

The playspaces were recognised as destination parks, with a well-thought-out design and planting palette, as well as road modifications to support safe pedestrian movement. It was wonderful to hear that the judging panel said this vibrant and challenging space, with its diverse recreational elements, promotes inclusivity through clever placement and attention to detail.

The Cameron Avenue Reserve playspace project was made possible thanks to a \$900,000 grant from the Victorian Government through the Local Parks Program and a Council contribution of \$150,000.

The playspaces are now in the running for the national awards, which will be announced in October. Fingers crossed!

The SES have released a compelling video of the February storms. You can view here www.youtube.com/watch?v=fKue7uOczXO

Thank you again to our amazing SES volunteers.

Please contact me anytime if you have any queries or feedback at Nicky.Luo@monash.vic.gov.au or [0451 560 398](tel:0451560398)



OUR TREES need protecting

Our tree canopy matters. Trees cool our neighbourhoods, clean our air, make our streets walkable and protect Monash's cherished garden character.

The wholesale removal of trees from properties, referred to as 'moonscaping', and their replacement with paving and other hard surfaces is frustrating to many people who live in Monash.

For the past five years Council has been asking the Victorian Government to give us planning controls to protect and improve the landscape and tree canopy of Monash. Despite multiple applications, we're still waiting for the Victorian Government to make a decision that can stop the loss of our tree canopy.

During this time, City of Whitehorse has joined City of

Maroondah in having municipality wide tree protections. The Victorian Government won't explain why Maroondah and Whitehorse's neighbourhoods and trees deserve planning protection, but Monash's do not.

Visit monash.vic.gov.au/protect-our-trees to learn how you can help Council to protect Monash's trees.

WE HAVE a food waste solution

We offer free Food and Garden Waste Recycling (green bin services) to schools in Monash that demonstrate ongoing sustainability, through our Food Waste Recycling Program.

Eight schools and colleges now participate in food waste recycling, with Clayton residential college, Mannix College, recording stunning results in less than 12 months. Mannix joined the recycling program in mid-2023 and has since been able to divert approximately 9600kg of food waste from landfill – the equivalent weight of six or seven family cars!

Food waste is processed at commercial composting facilities, where it is turned into nutrient-rich compost for farms and gardens across Victoria.



Read more about Mannix's food waste journey
monash.vic.gov.au/put-food-waste-to-good-use

Is your school interested in participating in the Food Waste Recycling Program, or other Sustainability, Recycling or Environment education programs? Monash Council can help monash.vic.gov.au/Sustainability-for-Schools-and-Community-Groups



PUTTING A STOP to soil dumping

It may seem normal to see soil in a park, but illegally dumped soil is anything but natural.

On 13 May 2024, 3½ truckloads of soil was dumped at Drummies Bridge Reserve in Glen Waverley. Fortunately, a community member reported it the next day, allowing Council to work quickly to assess the area and clean up the soil, ensuring people could continue using the park, bike path and road safely.

Don't let soil dumpers spoil our green spaces. Help us keep our environment healthy and

our reserves safe to access, by reporting any incidents and suspicious activity, such as a vehicle without a Council logo tipping soil or any other waste onto Council land.

It's quick and easy for community members to report dumped rubbish or soil. Visit the dumped rubbish reporting page on our website:

monash.vic.gov.au/dumped-rubbish



Via the Snap Send Solve phone app or
9518 3555

YOUR GREEN BIN is helping save the planet

Did you know the food and garden waste (green) bin accepts cooked and raw bones? Or that you can reduce smells by freezing food and throwing it out the night before collection?

Learn more tips to help you sort your food and garden waste with our online workshop!

Whether you're new to Monash or want to know more about what happens to items after they're collected, this workshop is your gateway to making the most out of the green bin.

WHEN: Tues 13 August, 6pm-7pm

WHERE: Online

LINK: <https://events.humanitix.com/what-happens-to-your-food-and-garden-waste-webinar-monash-council>





Winter Series 2024

**THE BEACH BOYS V FRANKIE VALLI & THE 4 SEASONS
Tribute Show**
Sunday 4 August | 2pm, Clayton Theatre



BOOKINGS ESSENTIAL
Scan QR Code or go to
www.monash.vic.gov.au/festivals

COUNCIL Rates

Annual rates notices for 2024/25 have been issued. If you are a ratepayer and have not received your annual rates notice by August 2024, please contact Council on mail@monash.vic.gov.au 9518 3555 to request a copy.



WEAR IT Purple Day

Join us in showing support for LGBTIQ+ young people in Monash by participating in Wear It Purple Day on 30 August. Show your solidarity by donning purple clothes and be part of a day celebrated on the last Friday of August across Australia every year.

Young LGBTIQ+ people experience higher rates of discrimination, harassment and violence, which leads to lower social and emotional wellbeing outcomes. Did you know that more than 20% of young LGBTIQ+ people have experienced homelessness?

By wearing purple, we can demonstrate to LGBTIQ+ young people that they are celebrated and respected, acknowledging all have the right to be proud of who they are and who they are becoming.

This day is also a key part of our LGBTIQ+ Action Plan, highlighting our ongoing commitment to the LGBTIQ+ community and ensuring everyone feels welcome and safe in Monash.

For more information about Wear It Purple Day and other LGBTIQ+ days of significance, visit: www.monash.vic.gov.au/lgbtqia



NATURE IN FOCUS

Monash Wildlife
Photo Exhibition

Exhibition
OPEN!

22 Aug – 2 Sept

Get along to this inspirational community photo exhibition and view some of our unique local native wildlife.

The Track Gallery
Mount Waverley Community Centre,
45 Miller Crescent, Mount Waverley

Learn more at
www.monash.vic.gov.au/photo-exhibition





...on managing the future of waste in Monash

We want to have a conversation with the Monash community about how we manage the future of waste to create a truly circular economy.

A circular economy aims to eliminate waste and the continual use of resources by focussing on reusing, sharing, repairing, refurbishing, and recycling existing materials and products - keeping them in use for as long as possible.

To help Monash work towards this, we want to hear your ideas for Council on waste avoidance and reuse, recycling and waste management, litter and illegal dumping, and accessing and using our Recycling and Waste Centre in Notting Hill.

Your thoughts will help to shape Monash's future waste strategies. Visit shape.monash.vic.gov.au/waste-strategy to see how you can get involved.



... on proposed dog off-leash area upgrade



Council has received \$500,000 in Victorian Government funding for dog off-leash improvements at Mount Waverley Linear Reserve (including Heany Street and Beverley Grove Reserves), and we want residents to have their say on the design.

Proposed upgrades include safety fencing and gates along the busy Waverley Road frontage; landscaping and barrier planting; dog agility and sensory elements; drinking fountains with dog bowls; signage; seating; waste bag dispensers; and rubbish bins.

The upgrades will create a space where people can enjoy the outdoors, unwind, or spend quality time with their furry companions.

Have your say by 28 July at shape.monash.vic.gov.au/mount-waverley-dogs

This project is supported by the Victorian Government through the New and Upgraded Dog Parks Program.

WHEN DO I NEED a building and/or planning permit?

Building, renovating or altering a property? You may need a Building and/or Planning Permit. You may need a permit for:

- » Building or alterations/additions to a dwelling(s)
- » Demolishing a building
- » Heritage building works or demolition
- » Tree removal
- » Constructing a deck, verandah, front fence, swimming pool, spa and associated safety barriers
- » Asset protection.

You do not always need a planning permit, even when you need a building permit. Before starting works contact Council for advice, go to monash.vic.gov.au/building-process or **9518 3555** to determine if you need a building permit, planning permit or in some instances both.

COUNCILLOR NEWS

Cr Tina Samardzija

Following my year as Mayor it has been great to meet and speak with Wheelers Hill and Mulgrave residents these past few months. Improving local facilities and amenities matters to you and I'm pleased my focus on local shopping strips will see Council's first upgrade in Mulgrave at the corner of Springvale and Dandenong roads.

Mulgrave Reserve recently received new cricket nets (here's me with Riyanshu from the Mulgrave Cricket Club checking them out) and will soon have a district level playground that's better connected to the upgraded toilets. There will be new exercise equipment for adults too. I'm looking forward to Mirvac finally delivering the kiosk and toilets for the Waverley Park playground and can't wait for the much-needed pedestrian crossing and bike path realignment in front of Brentwood Preschool.

In one of my final Mayoral columns late last year I wrote about my focus on women and girls having access to community sport and recreation opportunities, in particular, new mums. The Women's Sports Directory I launched, with links to local clubs and organisations that provide programs and activities for women and girls, has continued to grow. From archery to walking and everything in between, there's something for everyone: [monash.vic.gov.au/women-sport-directory](https://www.monash.vic.gov.au/women-sport-directory).

Since then, Council has created more opportunities for people to get active and healthy. Earlier this year, Jells Park received an important upgrade with 18 new tennis courts and facilities for tennis and golf players. Australia's newest Super Netball team, the Melbourne Mavericks, have settled into their new training base at Waverley Netball Centre, linking up with local netball teams for programs and events and showing our young kids what's possible.

We could have more and better local infrastructure like this if Council spent the once-in-a-lifetime money we will receive from the Suburban Rail Loop Authority and the sale of Council's most valuable land on local priorities instead of overspending on one \$130 million project in Glen Waverley. As a lawyer and economist, I will always focus on value for money.

I'm always keen to hear from residents and work to get things done locally, so please contact me any time.



Next Council Meetings

Tuesday 30 July, 7pm | Tuesday 27 August, 7pm

Monash Civic Centre, 293 Springvale Rd, Glen Waverley

Access meeting agendas and watch in-person or online:

www.monash.vic.gov.au/meetings

Your Councillors

Glen Waverley Ward



Cr Geoff Lake

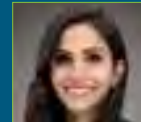
0411 645 281
Geoff.Lake@monash.vic.gov.au



Cr Nicky Luo | Mayor

9518 3524 | 0451 560 398
Nicky.Luo@monash.vic.gov.au

Mount Waverley Ward



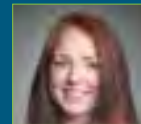
Cr Anjalee de Silva

0424 679 096
Anjalee.deSilva@monash.vic.gov.au



Cr Brian Little | Deputy Mayor

0407 878 033
Brian.Little@monash.vic.gov.au



Cr Rebecca Paterson

0437 959 163
Rebecca.Paterson@monash.vic.gov.au

Mulgrave Ward



Cr Paul Klisaris

0412 516 026
Paul.Klisaris@monash.vic.gov.au



Cr Shane McCluskey

0466 345 406
Shane.McCluskey@monash.vic.gov.au



Cr Tina Samardzija

0435 011 927
Tina.Samardzija@monash.vic.gov.au

Oakleigh Ward



Cr Josh Fergeus

0466 465 421
Josh.Fergeus@monash.vic.gov.au



Cr Stuart James

0413 184 250
Stuart.James@monash.vic.gov.au



Cr Theo Zographos

0430 316 911
Theo.Zographos@monash.vic.gov.au

You can contact councillors via phone or email. Letters can be mailed to:

PO Box 1, Glen Waverley, VIC 3150

www.monash.vic.gov.au/councillors



What's on ^{IN} Monash

STORYTIME

Sat 3 August, 11am

National Aboriginal and Torres Strait Islander Children's Day

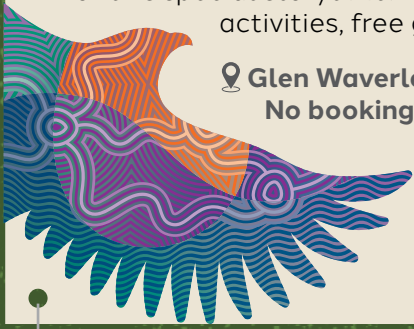
Join Jaeden Williams, a proud Boonwurrung, Barkindji man, with his interactive storytelling for this special storytime. We'll also have craft activities, free giveaways, and more.

📍 Glen Waverley Library.

No bookings required. Enquiries:

📞 9518 3030

🌐 www.monlib.vic.gov.au/storytime



Damper Creek Nature Walk

10am every second Tuesday

Take in the natural beauty and enjoy a leisurely, guided walk along Damper Creek – all while making new friends and staying active!

We take our nature walks to different locations each month. To see where we visit next, subscribe to What's On (see 'What's on in your neighbourhood' below) and look out for the monthly Active Outdoors program.



📍 Damper Creek Conservation Reserve, 38-50 Park Rd Damper Creek, Mount Waverley.

To book: 🌐 www.trybooking.com/CSLTI

Share the Dignity

Menstruating isn't a choice, but some people are forced to choose between buying period products, or food to eat.

This August, we're joining the fight to end period poverty and we need your help in donating brand new and sealed sanitary and period products including pads, tampons, maternity pads, incontinence pads, reusable pads, period underwear, and menstrual cups.



Donate at a Monash Share the Dignity collection bin located at all six of our library branches, three recreation centres, Monash Youth Services and Cabena Child and Family Centre.

🌐 monash.vic.gov.au/share-the-dignity

What's on in your neighbourhood?

Feel like heading to a performance? Looking for something to do over the school holidays? Wondering when the next festival is coming up?

The What's On pages on Council's website are just the place to find all things related to Council and community held events.

Subscribe to receive regular updates. If you know, you know! 🌐 monash.vic.gov.au/events

Contact us



🕒 Mon to Fri, 8.30am to 5pm

📍 Monash Civic Centre 293 Springvale Rd, Glen Waverley, 3150

📍 Oakleigh Service Centre 3 Atherton Rd, Oakleigh, 3166

📞 9518 3555 🌐 www.monash.vic.gov.au ✉️ mail@monash.vic.gov.au

For text version of the Bulletin: 🌐 www.monash.vic.gov.au/news

We welcome your feedback: ✉️ mail@monash.vic.gov.au

Monash Council acknowledges the Traditional Owners of the land that makes up Monash, the Wurundjeri Woi Wurrung and Bunurong People, and recognises their continuing connection to the land and waterways. We pay our respects to their Elders past, present and emerging and extend this to all Aboriginal and Torres Strait Islander People.



Copyright © 2024 Monash City Council. All Rights Reserved; reproduction in any form will require Council's written approval.

Information in the August Bulletin 2024 is current at the time of going to print on 1 July 2024.

SNAP SEND SOLVE is a great app to report to us what needs fixing:

🌐 www.monash.vic.gov.au/snap-send-solve



Monash Interpreter Service

普通话	4713 5001	සිංහල	4713 5020
廣東話	4713 5002	தமிழ்	4713 5021
Việt Ngữ	4713 5003	Other languages	4713 5000
Ελληνικά	4713 5004		
हिंदी	4713 5005		
Italiano	4713 5008		
한국어	4713 5010		

