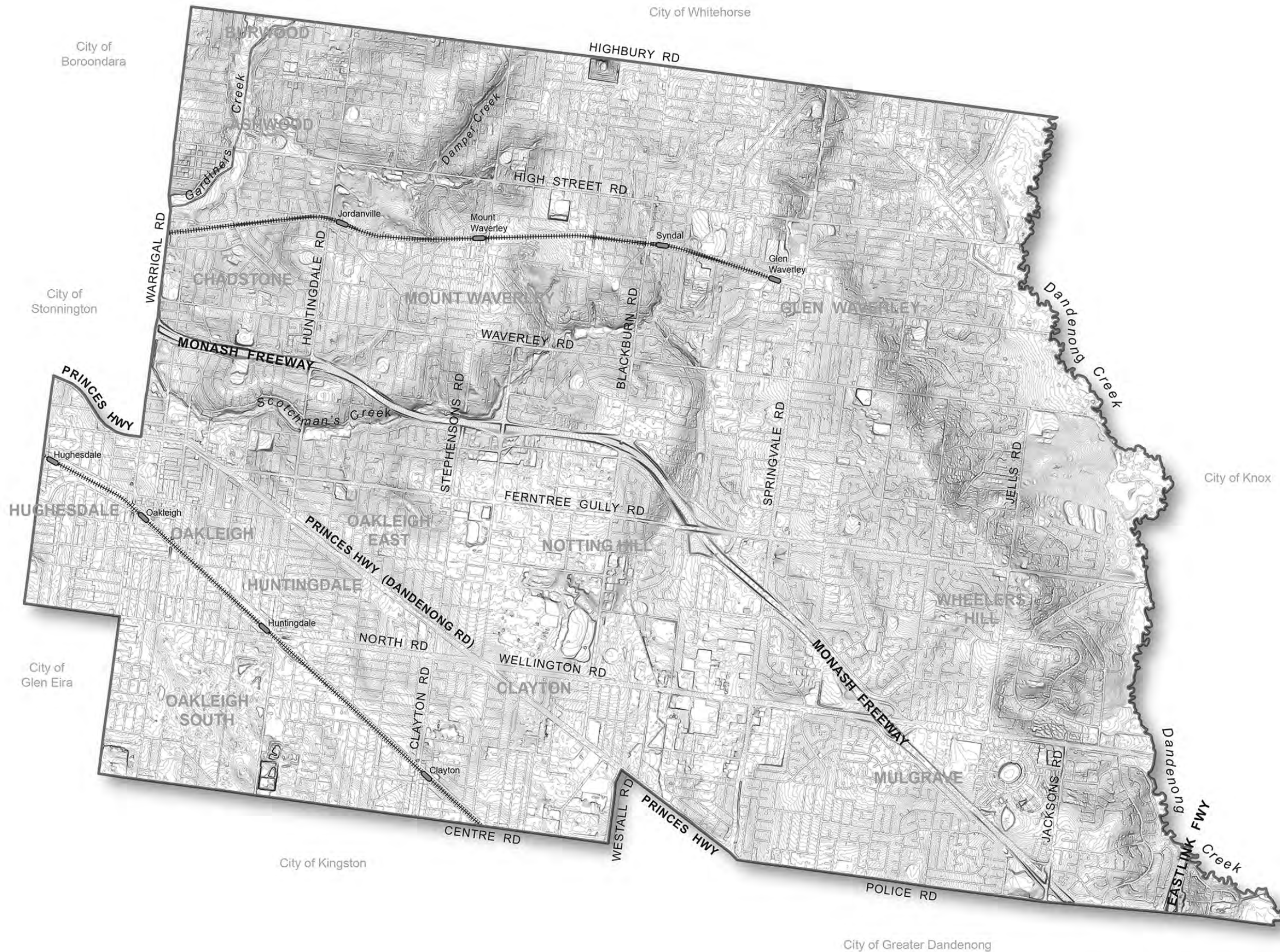


Attachment

Index of Drawings

| | |
|-----------|---|
| MLAVS-01 | Topography |
| MLAVS-02 | Topography & Vegetation Protection Overlay |
| MLAVS-03 | Waterways & Open Space |
| MLAVS-04 | Relevant Overlays |
| MLAVS-05 | Urban Character Precincts |
| MLAVS 06A | Existing Landscape Character Types – Vegetation |
| MLAVS 06B | Existing Landscape Character Types – Topography |
| MLAVS 07 | Preferred landscape character types |

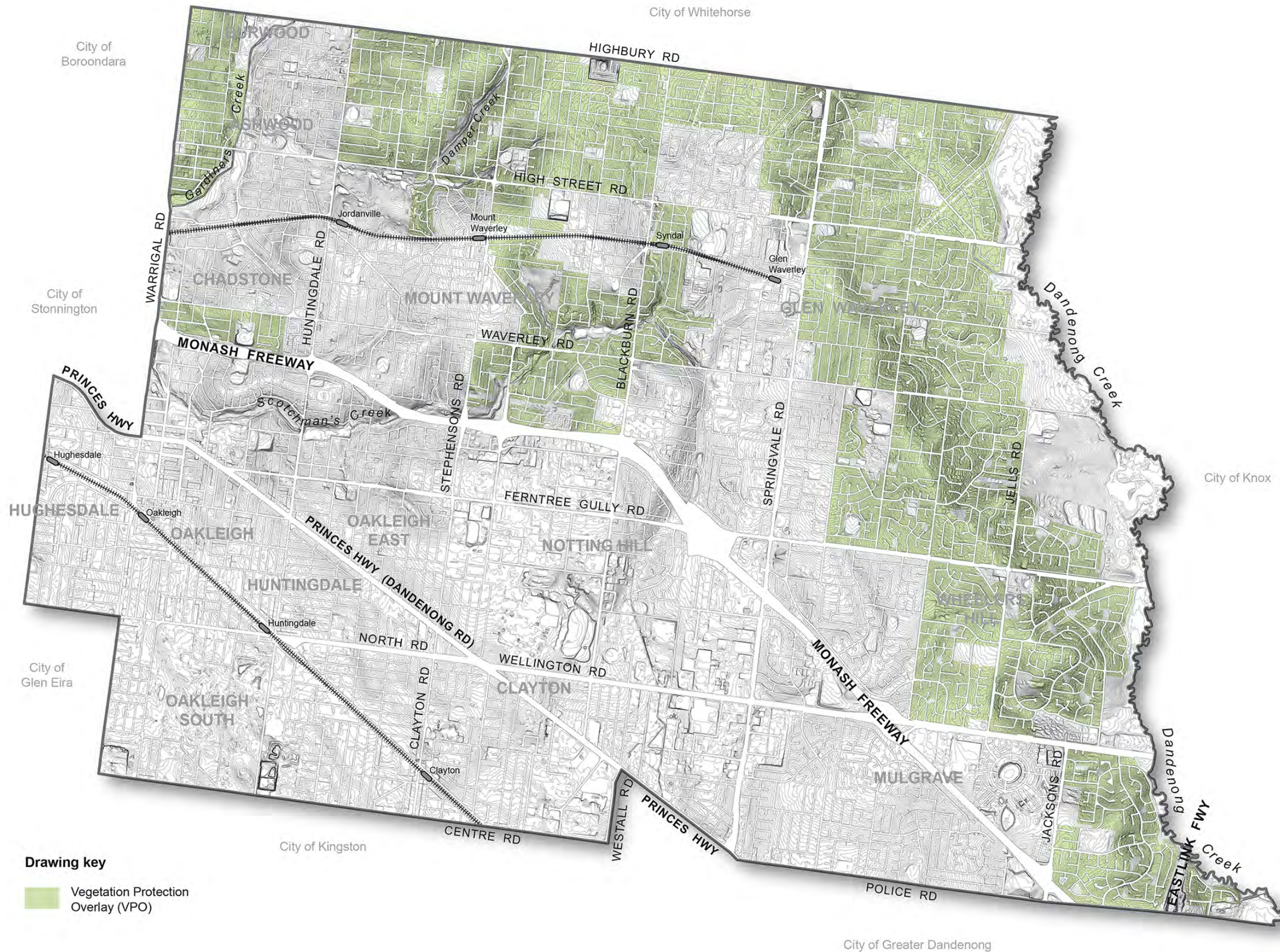


THOMPSON BERRILL in association with Environment & Land Management | Arboriculture Pty Ltd. LANDSCAPE DESIGN



Topography | **MONASH URBAN LANDSCAPE CHARACTER AND CANOPY VEGETATION STRATEGY** | FINAL

28 FEB 2017
 DWG: MLAVS-01
 SCALE 1:40,000 @ A3
 0 200 400 600 1km



Drawing key

Vegetation Protection Overlay (VPO)

THOMPSON BERRILL
 LANDSCAPE DESIGN
 in association with Environment & Land Management | Arboriculture Pty Ltd.



Topography & Vegetation Protection Overlay
MONASH URBAN LANDSCAPE CHARACTER AND CANOPY VEGETATION STRATEGY

FINAL
 28 FEB 2017
 DWG: MLAVS-02
 SCALE 1:40,000 @ A3
 0 200 400 600 1km



- Drawing key**
- Existing open space (PPRZ)
 - Existing open space (PCRZ)
 - Public open space (not zoned PPRZ or PCRZ)
 - Private golf course

Waterways & Open Space
MONASH URBAN LANDSCAPE CHARACTER AND CANOPY VEGETATION STRATEGY

Drawing key

Design Development Overlay (DDO)

Neighbourhood Character Overlay (NCO)

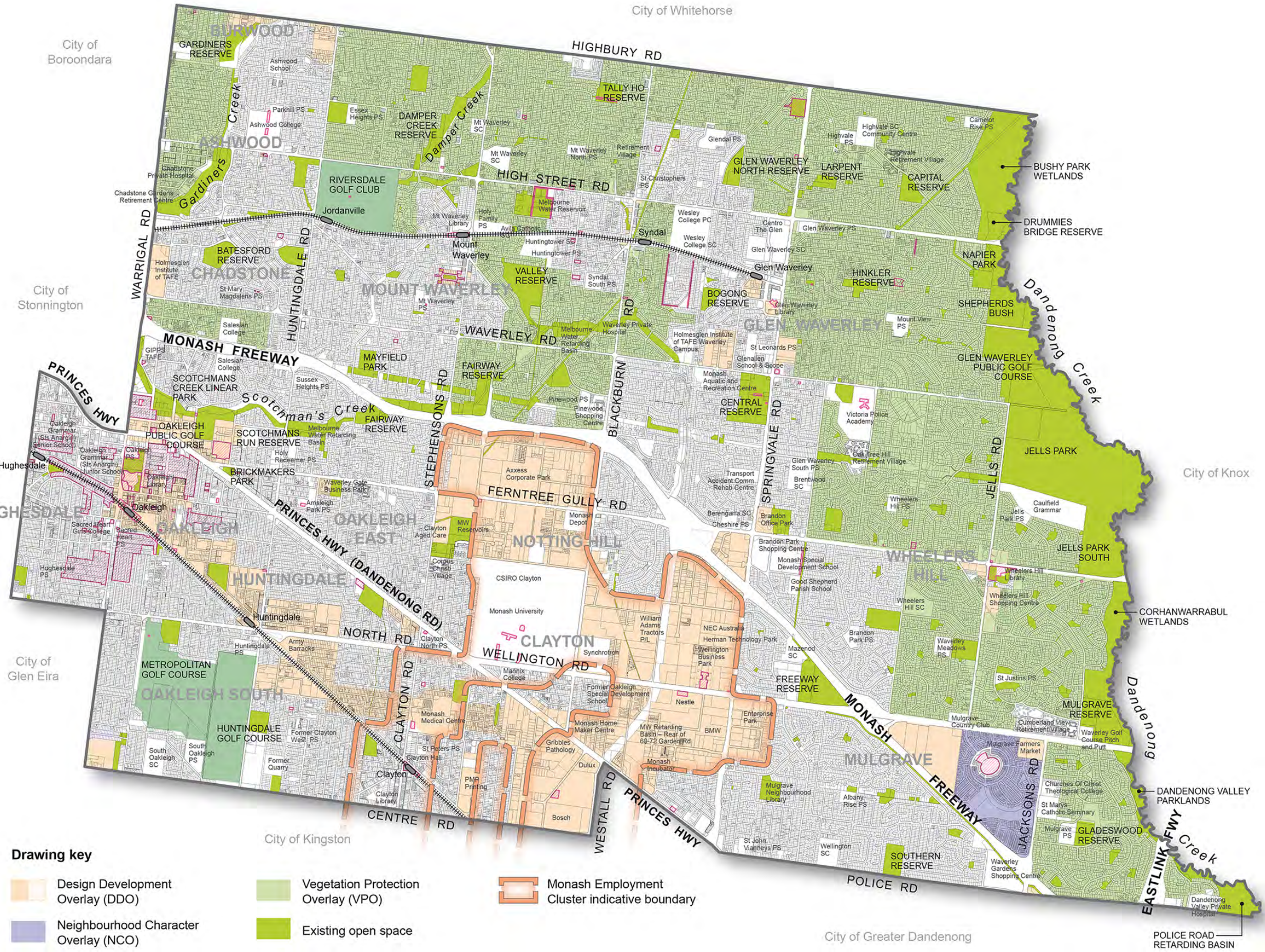
Heritage Overlay (HO)

Vegetation Protection Overlay (VPO)

Existing open space

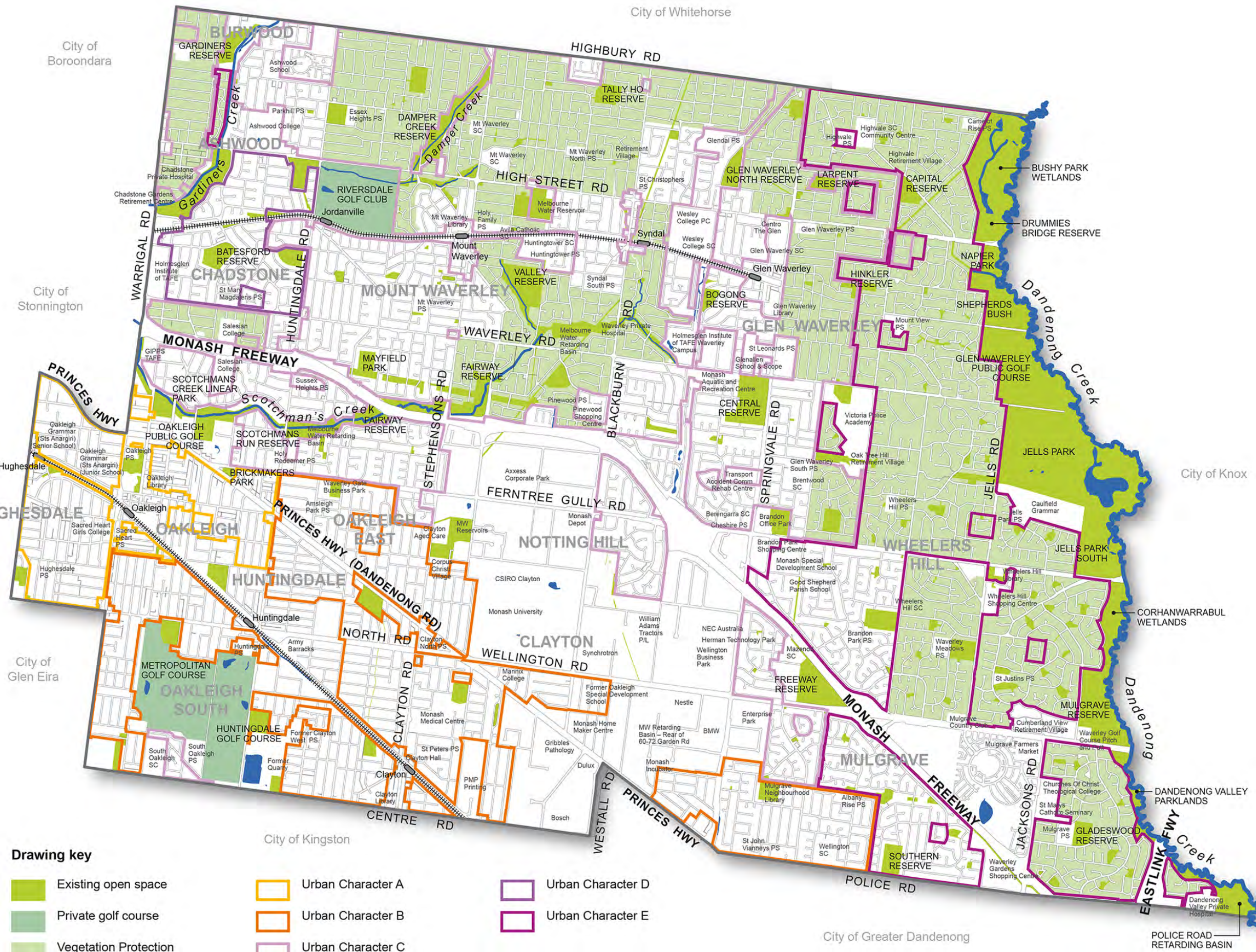
Private golf course

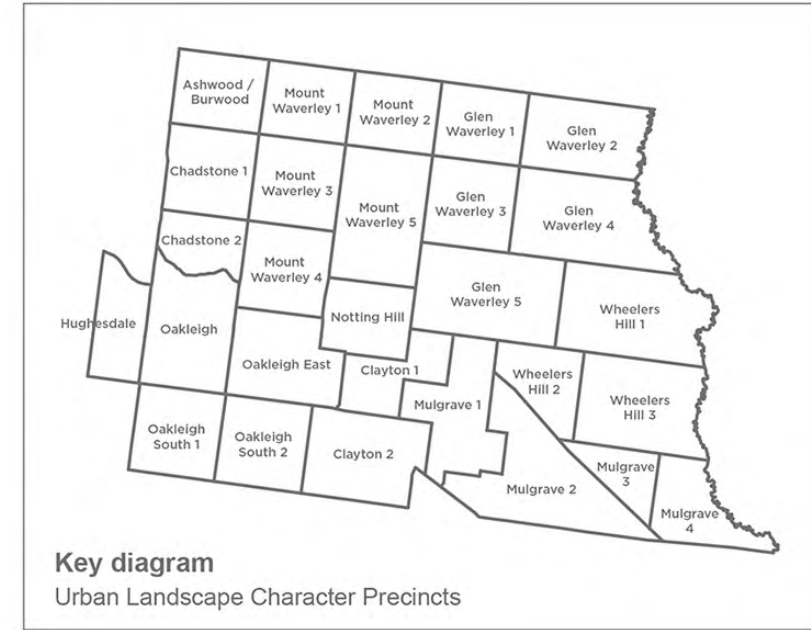
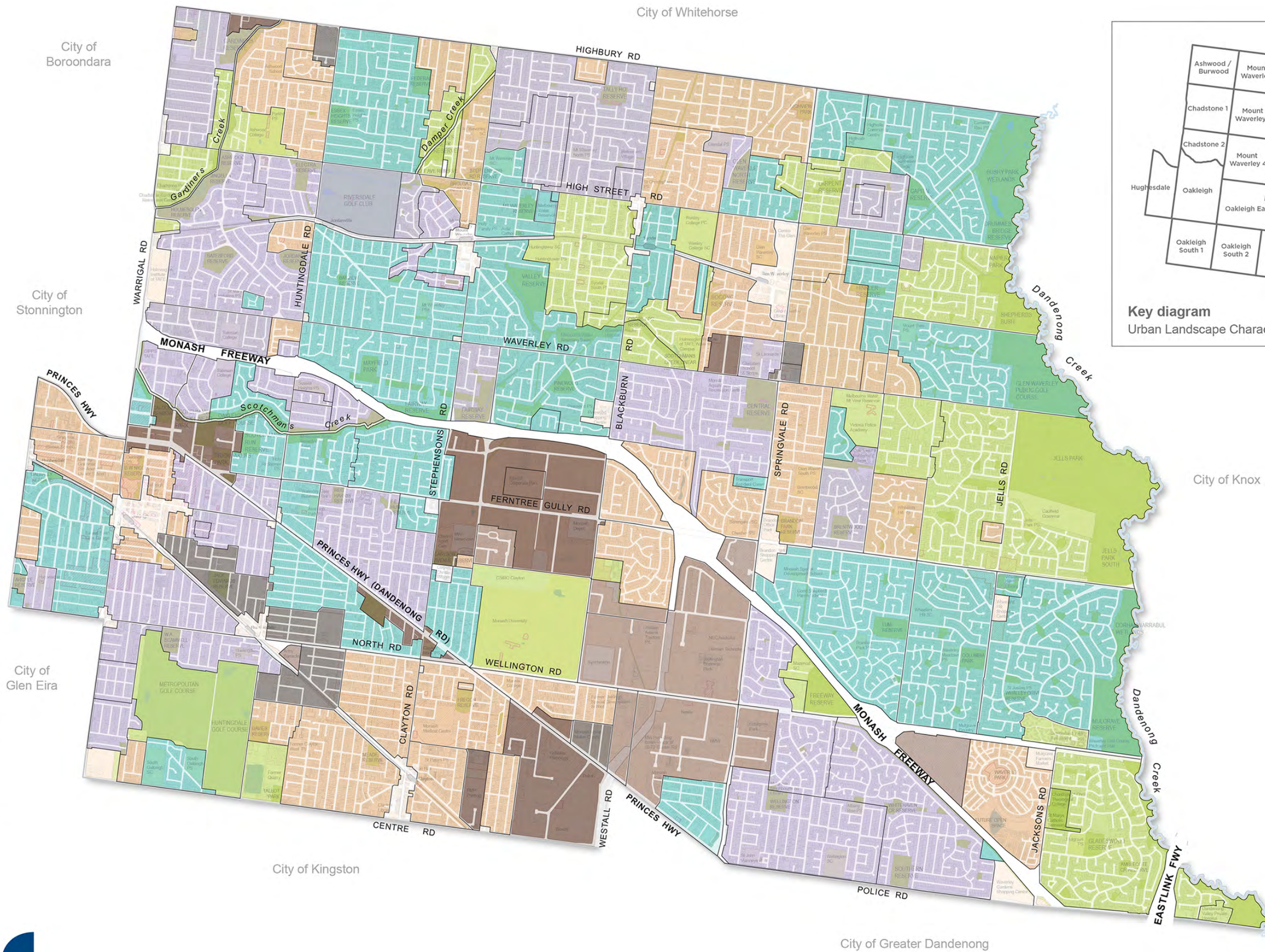
Monash Employment Cluster indicative boundary



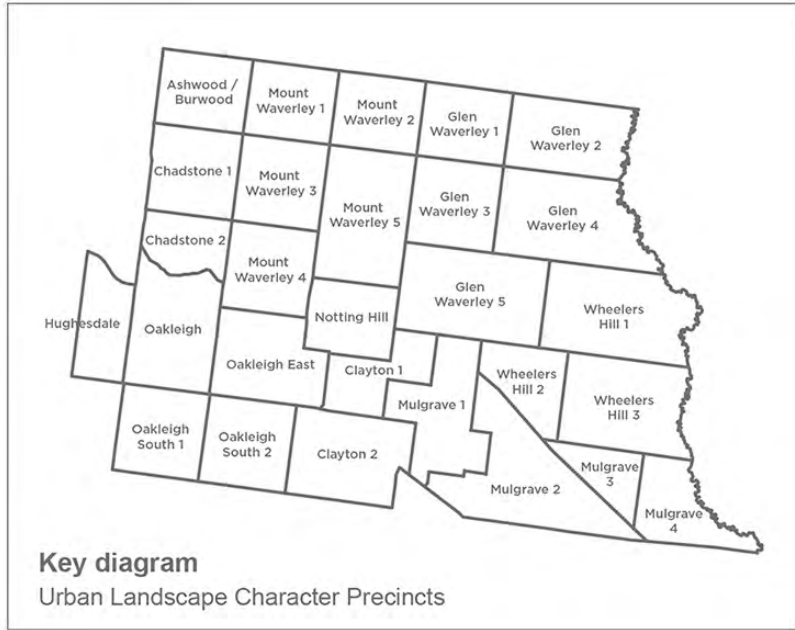
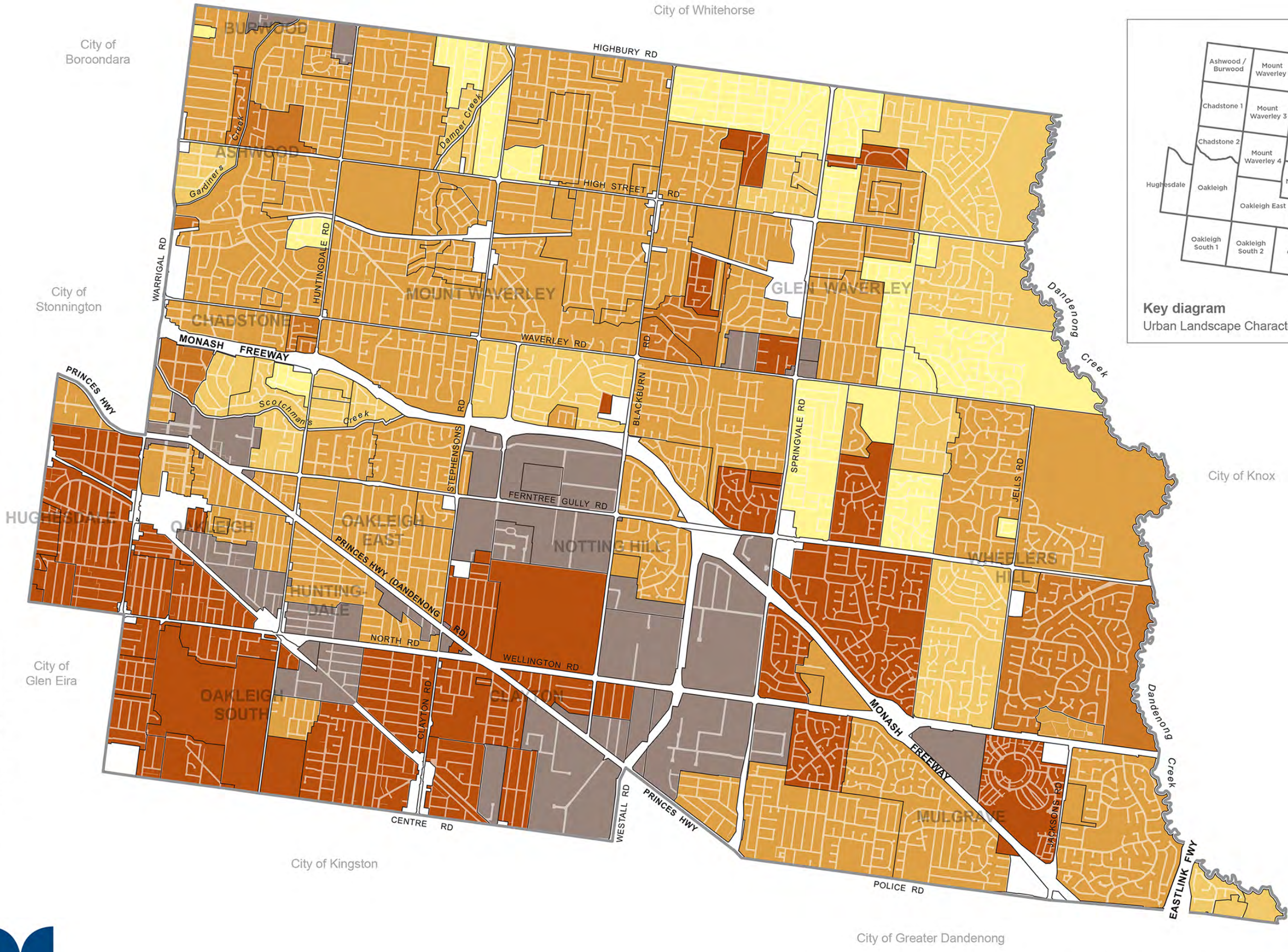
Drawing key

- Existing open space
- Private golf course
- Vegetation Protection Overlay (VPO)
- Urban Character A
- Urban Character B
- Urban Character C
- Urban Character D
- Urban Character E





- Drawing key**
- Evergreen landscape character type
 - Exotic landscape character type
 - Native tall Eucalypt landscape character type
 - Deciduous and evergreen landscape character type
 - Garden industrial landscape character type
 - Suburban industrial landscape character type
 - Urban Industrial landscape character type
 - Other land use (not assigned a landscape character)
 - Municipal boundary

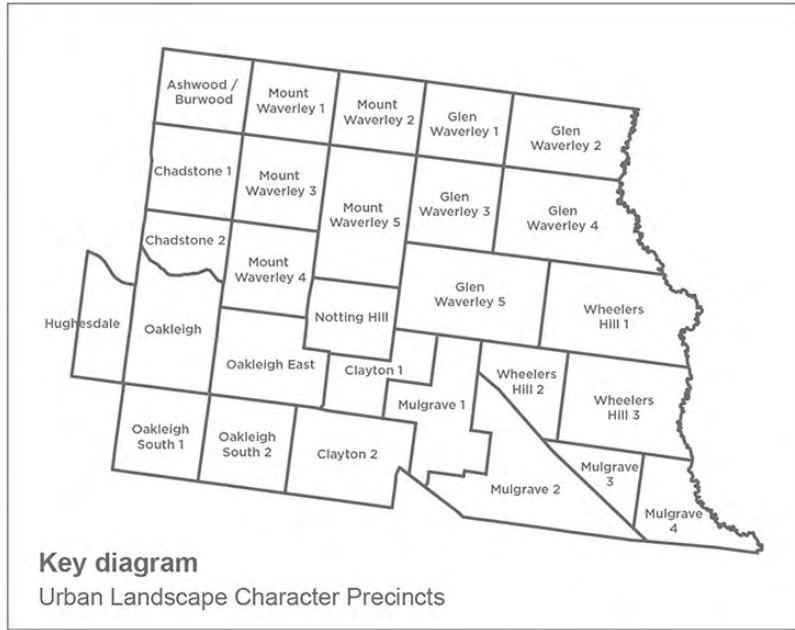
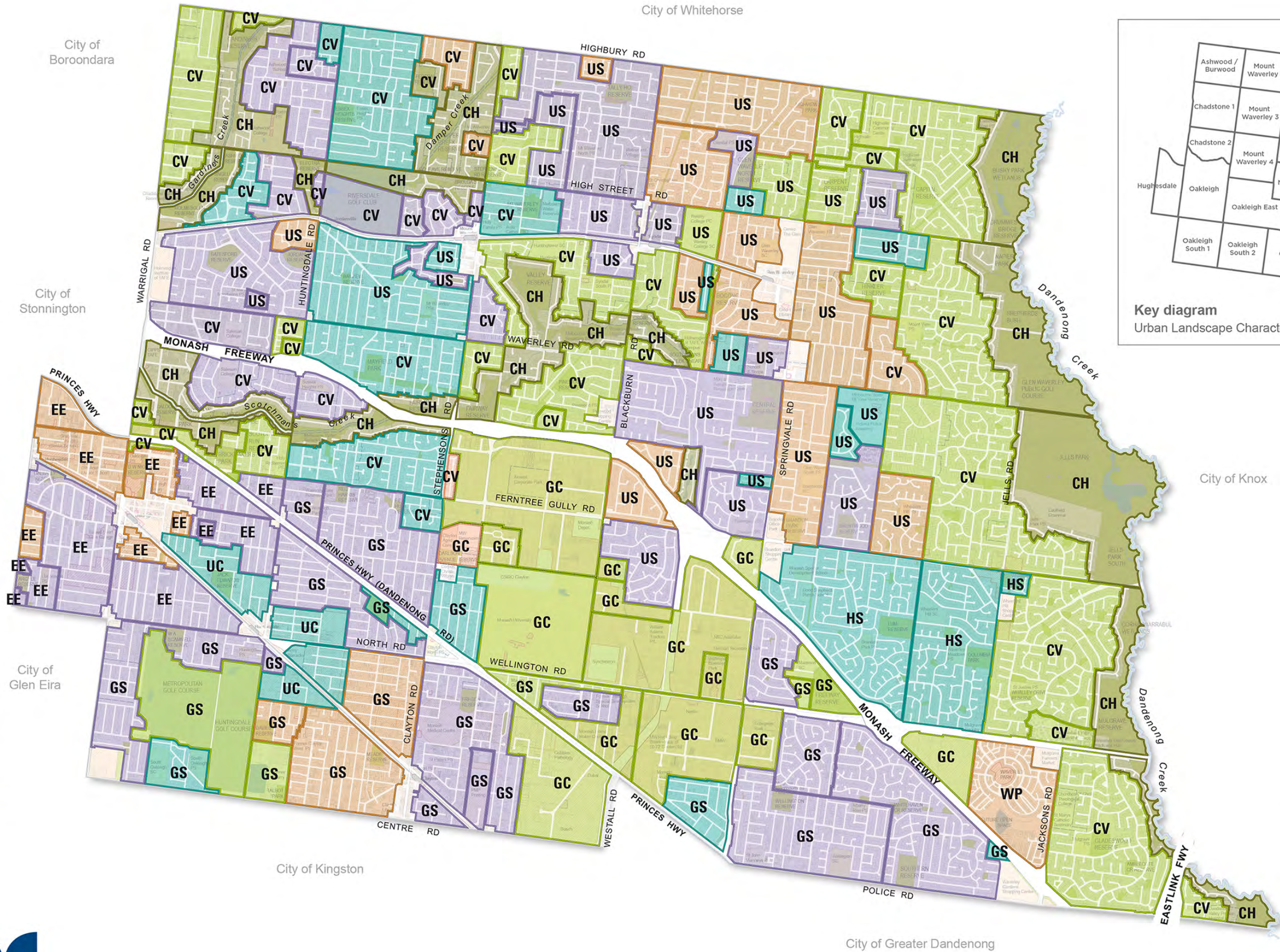


- Drawing key**
- Elevated landscape character type
 - Creek ridgeline landscape character type
 - Undulating landscape character type
 - Creek valley landscape character type
 - Established (relatively flat) landscape character type
 - Industrial land use (relatively flat)
 - Other land use (not assigned a landscape character)
 - Municipal boundary

City of Whitehorse

City of Boroondara

City of Stonnington



Key diagram
Urban Landscape Character Precincts

Landscape character type key

- CH** Creek habitat corridor
- CV** Creek valley environs
- US** Undulating leafy garden suburban
- GS** Gently undulating leafy garden suburban
- HS** Hilly native garden suburban
- EE** Early 1900s exotic garden style
- WP** Waverley Park exotic urban
- GC** Native garden commercial/industrial
- UC** Urban greening commercial/industrial

Vegetation type key

- Indigenous tall Eucalypt
- Tall Eucalypt
- Evergreen
- Deciduous and evergreen
- Exotic

City of Greater Dandenong