



Vipac Engineers and Scientists Limited
279 Normanby Rd, Port Melbourne, VIC 3207, Australia
Private Bag 16, Port Melbourne, VIC 3207, Australia
t. +61 3 9647 9700 | e. melbourne@vipac.com.au
w. www.vipac.com.au | A.B.N. 33 005 453 627 | A.C.N. 005 453 627

Team Optimum Pty Ltd



75 Beddoe Avenue, Clayton

Wind Impact Assessment



30N-23-0188-TNT-62733-0

28 July 2023

Job Title:	75 Beddoe Avenue, Clayton		
Report Title:	Wind Impact Assessment		
Document Reference:	30N-23-0188-TNT-62733-0		
Prepared For:	Team Optimum Pty Ltd 8 Avoca Way Wantirna South, Victoria, 3152, Australia Contact: Kang Chai Tel: 0425713322		Prepared By: Vipac Engineers and Scientists Limited 279 Normanby Rd, Port Melbourne, VIC 3207, Australia Tel: +61 3 9647 9700
Author:	Rumman Islam		Consulting Engineer
	28 Jul 2023		
Reviewer:	Eric Yuen		Wind Team Leader
	28 Jul 2023		
Issued By:	Rumman Islam		Consulting Engineer
	28 Jul 2023		
Revision History:			
Rev. #	Comments / Details of change(s) made	Date	Revised by:
Rev. 00	Original issue	28 Jul 23	

NOTE: This report has been prepared solely for the benefit of the client to whom this report is addressed for use herein ("Client") unless otherwise agreed in writing by Vipac Engineers and Scientists Limited ACN 005 453 627 ("Vipac"). Neither the whole of this report or any part of it may be published, duplicated or circulated without the prior written approval of Vipac except as required by law. Vipac does not assume any responsibility or liability for any losses suffered as a result of the publication, duplication or circulation of this report and excludes all liability whatsoever to any third party who may use or rely on the whole, or any part of this report.

Vipac has prepared this report using all reasonable care, skill and due diligence within the time period, budget and resources allocated to Vipac as agreed with the Client. Vipac excludes all liability to the Client whatsoever, whether in whole or in part, for the Client's use or reliance on the report other than for the purposes set out in the report, or any matters outside the agreed scope of the work.

For the purposes of preparing this report, reliance has been placed upon the material, representations, information and instructions provided to Vipac unless otherwise stated in the report. Originals of documents provided have not been required and no audit or examination of the validity of the documentation, representations, information or instructions provided has been undertaken except to the extent otherwise stated in this report. Information and findings contained in this report are based on Vipac's interpretation of data collected.

This document contains commercial, conceptual, engineering and other information that is proprietary to Vipac. The inclusion of this information in the report does not grant the Client any license to use the information without Vipac's prior written permission.

Executive Summary

Team Optimum Pty Ltd commissioned Vipac Engineers and Scientists Ltd to prepare a statement of wind effects for the ground level areas adjacent to the proposed development at **75 Beddoe Avenue, Clayton**. This appraisal is based on Vipac's experience as a wind-engineering consultancy.

Drawings of the proposed development were provided by **Metaxas Architects** in **July 2023**.

The findings of this study can be summarized as follows:

With proposed design:

- Wind conditions in the ground level footpath areas and access ways would be expected to be within the **walking** comfort criterion;
- Wind conditions at the main entrances would be expected to be within the **standing** comfort criterion;
- Wind conditions at the seating areas would be expected to be within the **sitting** comfort criterion;
- Wind conditions at the communal terraces are expected to be within the **standing/sitting** comfort criteria; and
- Wind conditions at the private balconies would be expected to be within the **walking** comfort criterion.
- The wind conditions would be expected to fulfil **safety** criterion.

As a general statement, educating occupants about wind conditions at open terrace/balcony areas during high-wind events and fixing loose, lightweight furniture on the terrace are highly recommended.

The assessments provided in this report have been made based on experience of similar situations in Melbourne and around the world. As with any opinion, it is possible that an assessment of wind effects based on experience and without experimental validation may not account for all complex flow scenarios in the vicinity.

Table of Contents

1	Introduction	5
2	Analysis Approach	7
2.1	Site Exposure	8
2.2	Regional Wind Climate.....	9
2.3	Building Geometry and Orientation	10
2.4	Flow interactions with Adjacent Developments.....	11
2.5	Assessment Criteria	12
2.5.1	Use of Adjacent Pedestrian Occupied Areas & Recommended Comfort Criteria.....	13
2.5.2	Terrace / Balcony Recommended Criterion Discussion	13
3	Pedestrian Level Wind Effects.....	17
3.1	Discussion & Recommendations	17
4	Conclusions	19
	Appendix A Environmental Wind Effects	20
	Appendix B References	21
	Appendix C Drawings List.....	22

1 Introduction

Vipac Engineers and Scientists has been commissioned by **Team Optimum Pty Ltd** to carry out an appraisal of the pedestrian wind effects at the ground level of the proposed development at **75 Beddoe Avenue, Clayton**.

Strong winds in pedestrian areas are frequently encountered in central business districts of cities around the world; including Sydney, Melbourne and Brisbane. Wind characteristics such as the mean speed, turbulence and ambient temperature determine the extent of disturbance to users of pedestrian areas. These disturbances can cause both comfort and safety problems and require careful consideration to mitigate successfully.

The proposed development is a 7-storey residential building with a roof height of 24.8m from street level. The site is bounded by Beddoe Avenue to the east, Dandenong Road to the south and existing development in the remaining directions. A site plan of the proposed development and the eastern elevation of the building are shown in Figure 1 and Figure 2, respectively.

This report details the opinion of Vipac as an experienced wind engineering consultancy regarding the wind effects in ground level footpath areas adjacent to the development as proposed. No wind tunnel testing has been carried out for this development at this stage. Vipac has carried out wind tunnel studies on a large number of developments of similar shape and having similar exposure to that of the proposed development. These serve as a valid reference for the prediction of wind effects. Empirical data for typical buildings in boundary layer flows has also been used to estimate the likely wind conditions on the ground level areas of the proposed development [2] & [3].

Drawings of the proposed development were supplied to Vipac by **Metaxas Architects** in **July 2023**. A list of drawings supplied is provided in Appendix C of this report.

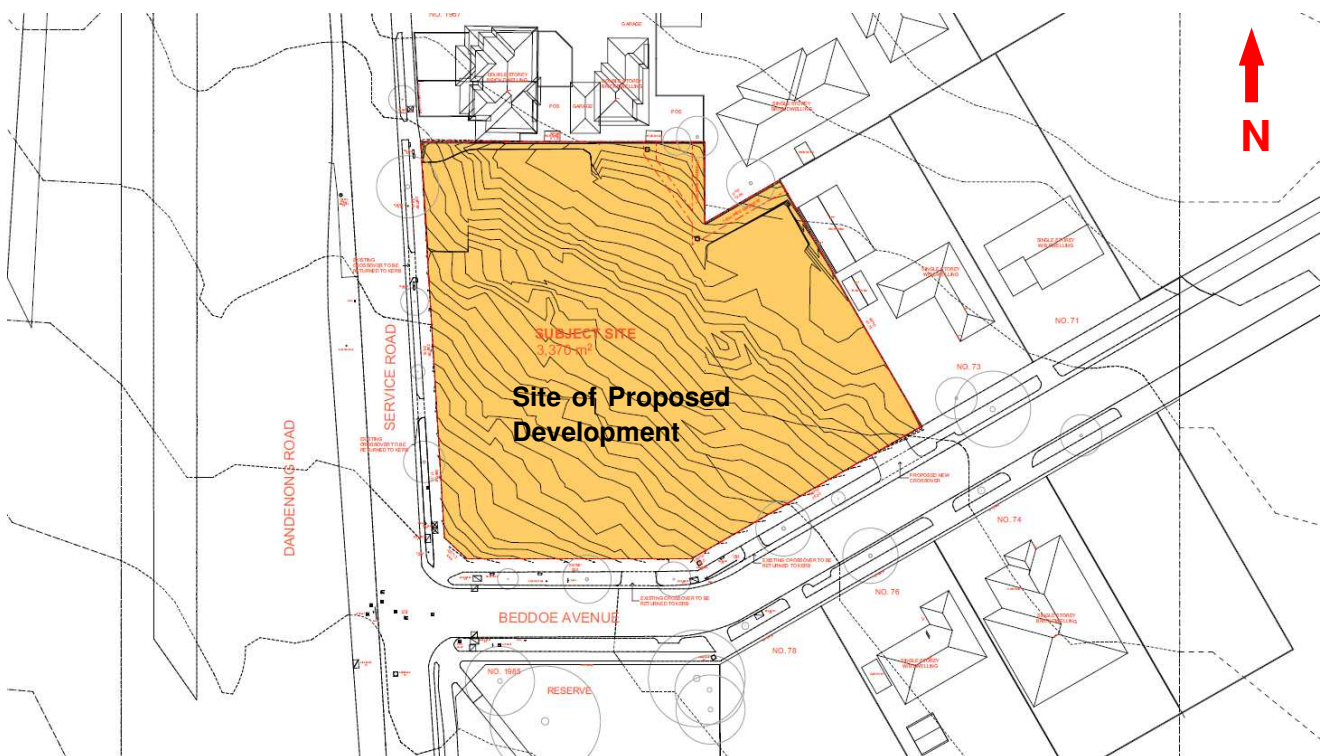


Figure 1: Site plan of the proposed development.



Figure 2: Eastern elevation the proposed development.

2 Analysis Approach

In assessing whether a proposed development is likely to generate adverse wind conditions in ground level footpath areas, Vipac has considered the following five main points:

- The exposure of the proposed development to wind;
- The regional wind climate;
- The geometry and orientation of the proposed development;
- The interaction of flows with adjacent developments; and
- The assessment criteria determined by the intended use of the areas affected by wind flows generated or augmented by the proposed development.

The pedestrian wind comfort at specific locations of ground level footpath areas may be assessed by predicting the gust and mean wind speeds with a probability of 0.1% and 20% expected at that location. The location may be deemed generally acceptable for its intended use while gust and mean wind speeds are within the threshold values noted in Section 2.5. Where Vipac predicts that a location would not meet its appropriate comfort criterion, the use of wind control devices and/or local building geometry modifications to achieve the desired comfort rating may be recommended. For complex flow scenarios or where predicted flow conditions are well in excess of the recommended criteria, Vipac recommends scale model wind tunnel testing to determine the type and scope of the wind control measures required to achieve acceptable wind conditions.

2.1 Site Exposure

The proposed development is located on a relatively flat terrain. The site is surrounded within an approximately 1.5km radius predominately by low to mid-rise developments. A satellite image showing these site surroundings is shown in Figure 3.

Considering the immediate surroundings and terrain, for the purposes of this study, the site of the proposed development is assumed to be within Terrain Category 3 for all wind directions (Figure 3).

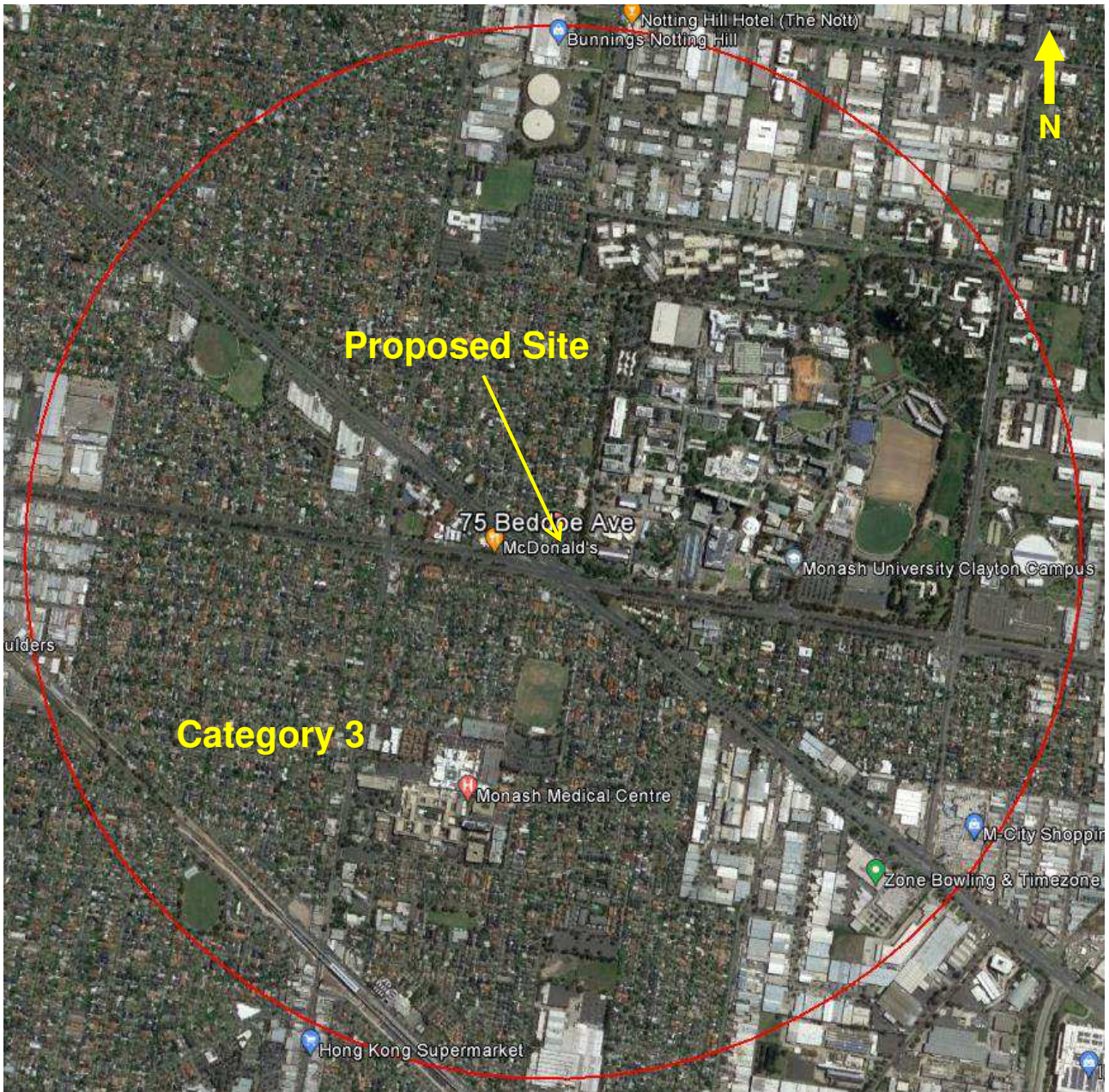


Figure 3: Assumed terrain categories for wind speed estimation.

2.2 Regional Wind Climate

The mean and gust wind speeds have been recorded in the Melbourne area for over 30 years. This data has been analysed and the directional probability distribution of wind speeds has been determined. The directional distribution of hourly mean wind speed at the gradient height, with a probability of 0.1% of time and 20% of time exceeded are shown in Figure 4. The wind data at this free stream height is common to all Melbourne city sites and may be used as a reference to assess ground level wind conditions at the site.

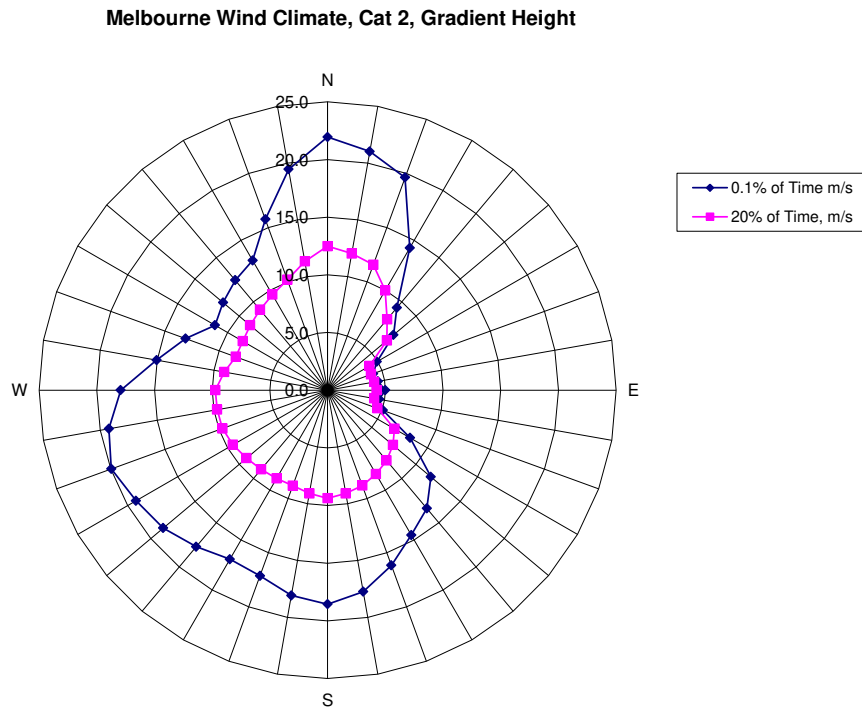


Figure 4: Directional Distribution of Mean Hourly Wind Velocities (m/s) for 0.1% and 20% exceeded at Gradient Height for Melbourne.

2.3 Building Geometry and Orientation

The proposed development is a 7-storey residential building. The overall plan-form dimensions are approximately 54m x 62m as shown in Figure 5. The main entrances are located on Beddoe Avenue. The development incorporates tower setbacks from north and west.



Figure 5: Ground floor plans with the plan-form dimensions overlaid.

2.4 Flow interactions with Adjacent Developments

The immediately adjacent developments are shown in Figure 6. At ground level, the site is exposed to direct winds from the south west and channelling northerly directions along Beddoe Avenue. The building is oriented such that adverse impacts from corner acceleration of south easterly is expected at ground level. The development is taller than the surrounding buildings and so is exposed to winds from all directions at the upper levels.



Figure 6: Immediately adjacent surroundings and their approximate number of storeys (S).

2.5 Assessment Criteria

The following wind comfort criteria detailed in Table 1 were applied in this study.

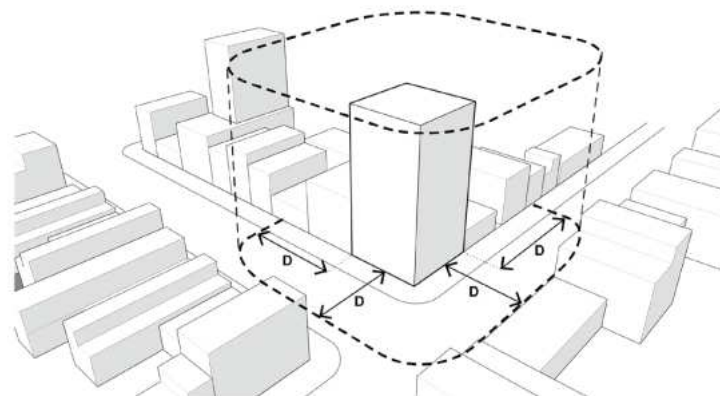
Table 1: Wind Comfort Criteria as per Clause 58.04-4

Unsafe	Comfortable
Annual maximum 3 second gust wind speed exceeding 20m/sec with a probability of exceedance of 0.1% considering at least 16 wind directions.	Hourly mean wind speed or gust equivalent mean speed from all wind directions combined with probability of exceedance less than 20% of the time, equal to or less than: 3m/sec for sitting areas (outdoor cafés) 4m/sec for standing areas (window shopping, queuing) 5m/sec for walking areas (steady steps for most pedestrians)

This criterion specifically calls for the safety criterion to be used to assess infrequent winds (e.g. peak event of $\leq 0.1\%$ of the time); and the perceived pedestrian comfort to be assessed based on frequently occurring winds (e.g. winds that occurs 80% of the time).

In Table 1, the mean wind velocity is defined as the maximum of hourly mean or gust equivalent mean ($\text{Gust}/1.85$)

This criteria specifies that safe and comfortable wind conditions must be achieved in publicly accessible areas within a distance equal to half the longest width of the building measured from all facades or half the overall height of the building, whichever is greater, as shown in Figure 7.



ASSESSMENT DISTANCE D = GREATER OF:
L/2 (HALF LONGEST WIDTH OF BUILDING) OR
H/2 (HALF OVERALL HEIGHT OF BUILDING)

Figure 7: Assessment distance

2.5.1 Use of Adjacent Pedestrian Occupied Areas & Recommended Comfort Criteria

The following table lists the specific areas adjacent to the proposed development and the corresponding recommended criteria.

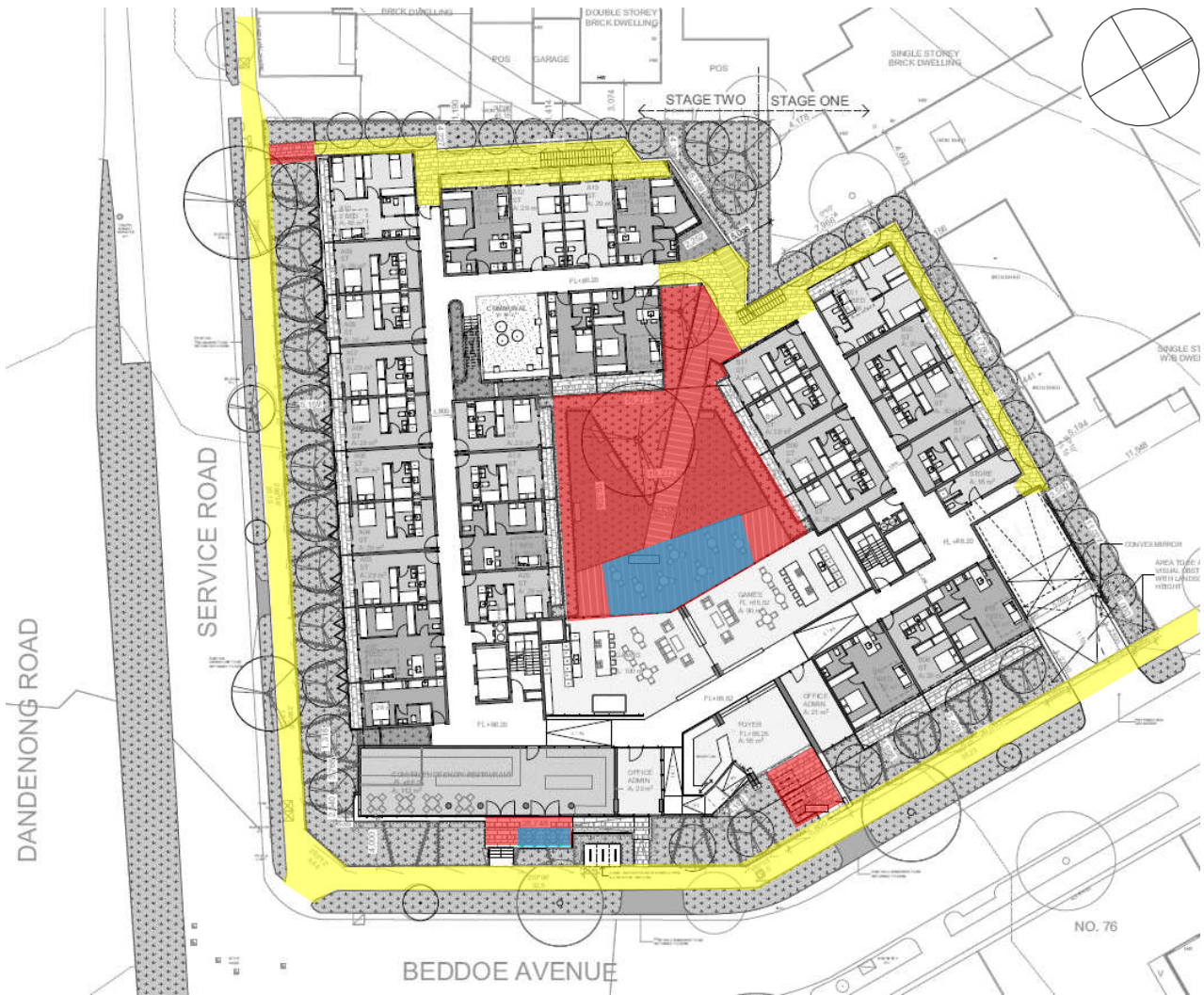
Table 2: Recommended application of criteria

Area	Specific location	Recommended Criteria
Public Footpaths, Access ways	Along Dandenong Road and Beddoe Avenue (Figure 8)	Walking
Building Entrances	Main building entrances along Dandenong Road and Beddoe Avenue (Figure 8)	Standing
Outdoor Communal Areas	Ground level, Level 3 and Level 4 (Figure 8, Figure 9 and Figure 10)	Standing / Sitting
Balcony/Terraces	Up the height of the building	Walking (See discussion below)

2.5.2 Terrace / Balcony Recommended Criterion Discussion

There are Private Balconies and Terraces located up the height of the development. Vipac recommends as a minimum that balcony/terrace areas meet the criterion for walking since:

- these areas are not public spaces;
- the use of these areas is optional, and only intended to be used on fair weather days with calm winds;
- many similar developments in Melbourne and other Australian capital cities experience wind conditions on balconies and elevated deck areas in the vicinity of the criterion for walking.



Recommended to fulfil Walking
 Recommended to fulfil Standing
 Recommended to fulfil Sitting

Figure 8: Ground floor plan with recommended wind criteria overlaid.




 Recommended to fulfil Standing

Figure 9: Level 3 plan with recommended wind criteria overlaid.




 Recommended to fulfil Standing

Figure 10: Level 4 plan with recommended wind criteria overlaid.

3 Pedestrian Level Wind Effects

3.1 Discussion & Recommendations

The proposed design has a number of features that are expected to be beneficial to the pedestrian wind environment. This is inclusive but not limited to the following:

- Facades setbacks from all boundaries;
- Tower setback design from Level 3 upwards on the west and north;
- Canopy around the south eastern corner;
- High, solid walls along the boundary; and
- Landscaping

Due to the proposed height above the surrounding areas, the proposed development is particularly exposed to adverse south westerly, westerly and northerly winds. However, the north and west of the proposed development has a setback tower design from level 3 upward. In combination with the setback design of the building façade from the sit boundaries (by approximately 4m), wind speeds on the ground floor where pedestrian movement are intended are expected to be within the recommended walking comfort criterion.

The main entrance into the development is the foyer located along Beddoe Avenue. It is shielded by a high solid wall that is expected to ameliorate the channelling of northerly winds (Figure 12). The orientation of the entrance into the restaurant along Beddoe Avenue is also expected to be beneficial to the wind environment. As such, both of the entrances in to the restaurant and the foyer are expected to meet the recommended standing comfort criterion.

The entrance into the property located along Dandenong Road is similarly shielded by a 2m high wall along the property boundary. As such, this entrance is also expected to meet the recommended standing comfort criteria (Figure 11).

The seating area outside the Restaurant is facing the least dominant easterly direction. In combination with the proposed landscaping, wind speeds at this location are expected to be within the recommended sitting comfort criterion.

The Central Courtyard receives shielding from all directions by the development itself, as well as by the proposed landscaping. As such, wind speeds at this location are expected to be within the recommended standing/sitting comfort criterion.

The Level 3 communal terrace and the Level 4 communal terrace to the north are expected to receive sufficient shielding from the minimum 1.6m high glass screen; and the western communal terrace on Level 4 is expected to receive sufficient shielding from the minimum 1.6m high glass screen and proposed landscaping. As such, wind speeds at these locations are expected to be within the recommended standing comfort criterion.

Due to the small sizes of the private balconies and the shielding received by the 1m high solid balustrades, wind speeds are expected to be within the recommended walking comfort criterion.

The proposed development is expected to generate winds within safety criterion.

It should be noted that this study is based on experience only and has not utilised any experimental data for the analysis.



Figure 11: Rendered view from Dandenong Road showing wall that is expected to be beneficial.



Figure 12: Rendered view from Beddoe Avenue showing wall that is expected to be beneficial.

4 Conclusions

An appraisal of the likely wind conditions at the pedestrian ground level and terrace areas of the proposed development at **75 Beddoe Avenue, Clayton** has been made.

Vipac has carefully considered the form and exposure of the proposed development, nominated criteria for various public areas according to their function and referred to past experience to produce our opinion of likely wind conditions.

The findings of this study can be summarised as follows:

With proposed design:

- Wind conditions in the ground level footpath areas and access ways would be expected to be within the **walking** comfort criterion;
- Wind conditions at the main entrances would be expected to be within the **standing** comfort criterion;
- Wind conditions at the seating areas would be expected to be within the **sitting** comfort criterion;
- Wind conditions at the communal terraces are expected to be within the **standing/sitting** comfort criteria; and
- Wind conditions at the private balconies would be expected to be within the **walking** comfort criterion.
- The wind conditions would be expected to fulfil **safety** criterion.

As a general statement, educating occupants about wind conditions at open terrace/balcony areas during high-wind events and fixing loose, lightweight furniture on the terrace are highly recommended.

The assessments provided in this report have been made based on experience of similar situations in Melbourne and around the world. As with any opinion, it is possible that an assessment of wind effects based on experience and without experimental validation may not account for all complex flow scenarios in the vicinity.

This Report has been Prepared

For

Team Optimum Pty Ltd

By

VIPAC ENGINEERS & SCIENTISTS PTY LTD.

Appendix A Environmental Wind Effects

Atmospheric Boundary Layer

As wind flows over the earth it encounters various roughness elements and terrain such as water, forests, houses and buildings. To varying degrees, these elements reduce the mean wind speed at low elevations and increase air turbulence. The wind above these obstructions travels with unattenuated velocity, driven by atmospheric pressure gradients. The resultant increase in wind speed with height above ground is known as a wind velocity profile. When this wind profile encounters a tall building, some of the fast-moving wind at upper elevations is diverted down to ground level resulting in local adverse wind effects.

The terminology used to describe the wind flow patterns around the proposed development is based on the aerodynamic mechanism, direction and nature of the wind flow.

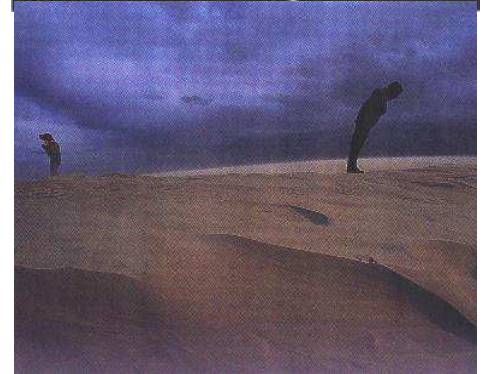
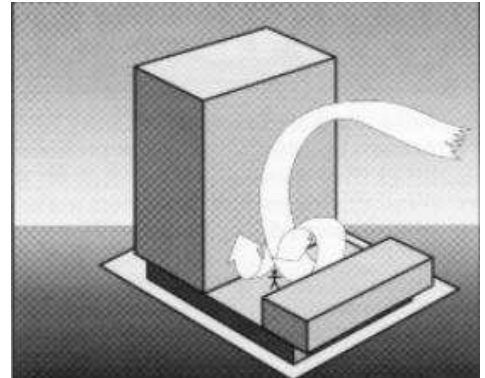
Downwash – refers to a flow of air down the exposed face of a tower. A tall tower can deflect a fast-moving wind at higher elevations downwards.

Corner Accelerations – when wind flows around the corner of a building it tends to accelerate in a similar manner to airflow over the top of an aeroplane wing.

Flow separation – when wind flowing along a surface suddenly detaches from that surface and the resultant energy dissipation produces increased turbulence in the flow. Flow separation at a building corner or at a solid screen can result in gusty conditions.

Flow channelling – the well-known “street canyon” effect occurs when a large volume of air is funnelled through a constricted pathway. To maintain flow continuity the wind must speed up as it passes through the constriction. Examples of this might occur between two towers, in a narrowing street or under a bridge.

Direct Exposure – a location with little upstream shielding for a wind direction of interest. The location will be exposed to the unabated mean wind and gust velocity. Piers and open water frontage may have such exposure.




Appendix B References

- [1] *Structural Design Actions, Part 2: Wind Actions*, Australian/New Zealand Standard 1170.2:2011
- [2] *Wind Effects on Structures* E. Simiu, R Scanlan, Publisher: Wiley-Interscience
- [3] *Architectural Aerodynamics* R. Aynsley, W. Melbourne, B. Vickery, Publisher: Applied Science Publishers

Appendix C Drawings List

Drawings received: **July 2023**

Name

 18.027 Dandenong Rd Clayton - TP- 230724