
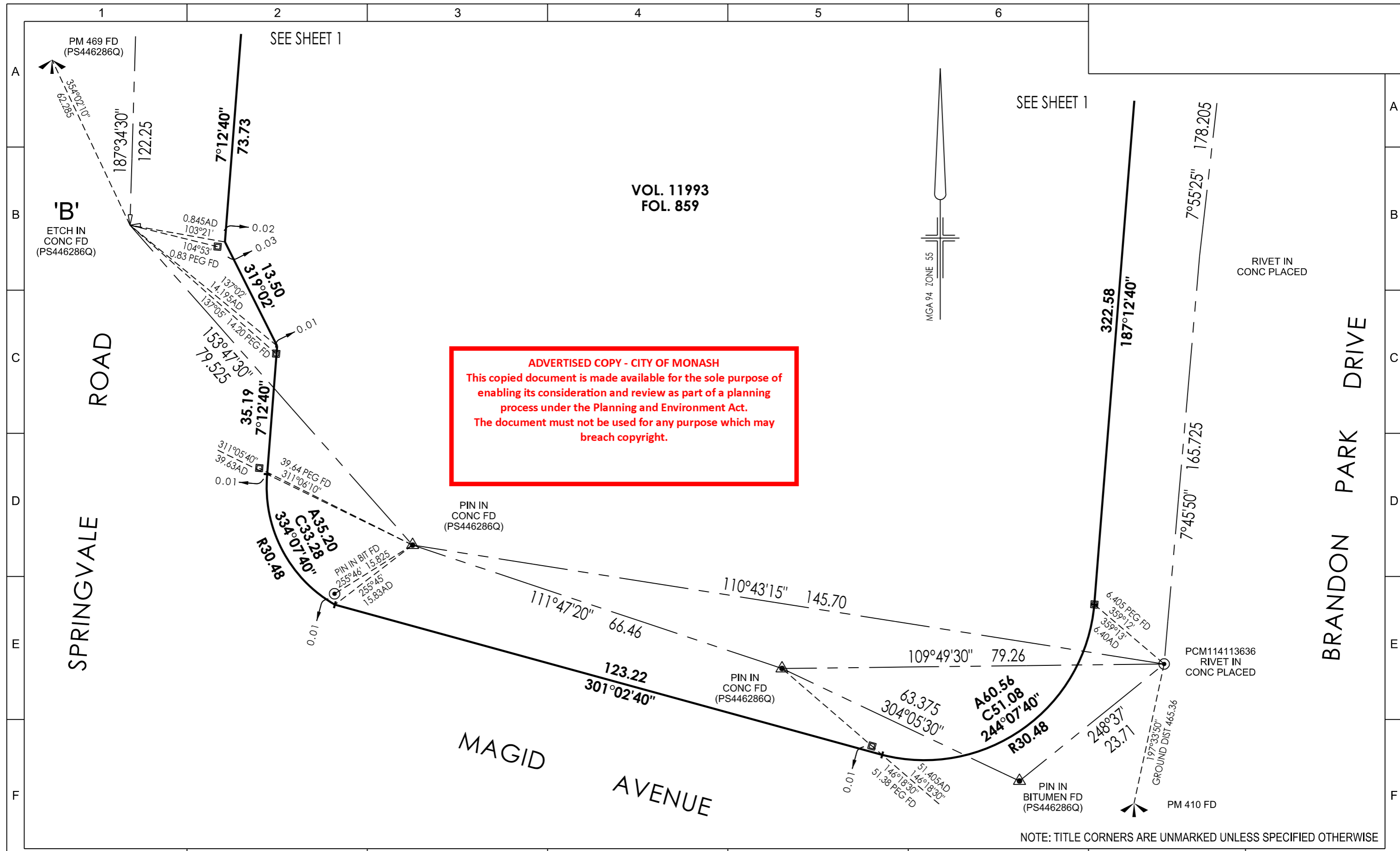
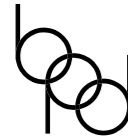


| AMENDMENTS | | ABSTRACT OF FIELD RECORDS | | NOTATIONS | | CERTIFICATION BY SURVEYOR | |
|---|--|---|--|---|--|--|--|
| | | COUNTY OF BOURKE PARISH OF MULGRAVE CROWN PORTION 79 (PART) | | MGA94 CONNECTION MADE IN ACCORDANCE WITH OSG DIRECTIVES (JULY 2018) 2.3.4 & 2.3.5 VERIFIED ON GROUND MARK MULGRAVE PM410. DATUM 'A' - 'B' - 'C' VIDE PS446286Q. | | SURVEYOR: DAVID VERSTEEGEN DATE OF SURVEY: 03/03/2020 | |
|  Breese Pitt Dixon Pty Ltd 1/19 Cato Street Hawthorn East Vic 3123 Ph: 8823 2300 Fax: 8823 2310 www.bpd.com.au info@bpd.com.au | | SURVEYORS REFERENCE 10230 | | ORIGINAL SHEET SIZE : A3 SHEET 1 OF 2 LENGTHS ARE IN METRES | | | |



| | | | |
|--|----------------------------------|---|--|
|  <p>Breese Pitt Dixon Pty Ltd 1/19 Cato Street Hawthorn East Vic 3123 Ph: 8823 2300 Fax: 8823 2310 www.bpd.com.au info@bpd.com.au</p> | SURVEYORS REFERENCE 10230 | ABSTRACT OF FIELD RECORDS | ORIGINAL SHEET SIZE : A3 SHEET 2 OF 2 |
| | | SEE SHEET 1 FOR CROWN DESCRIPTION DETAILS | |