

LEGEND:

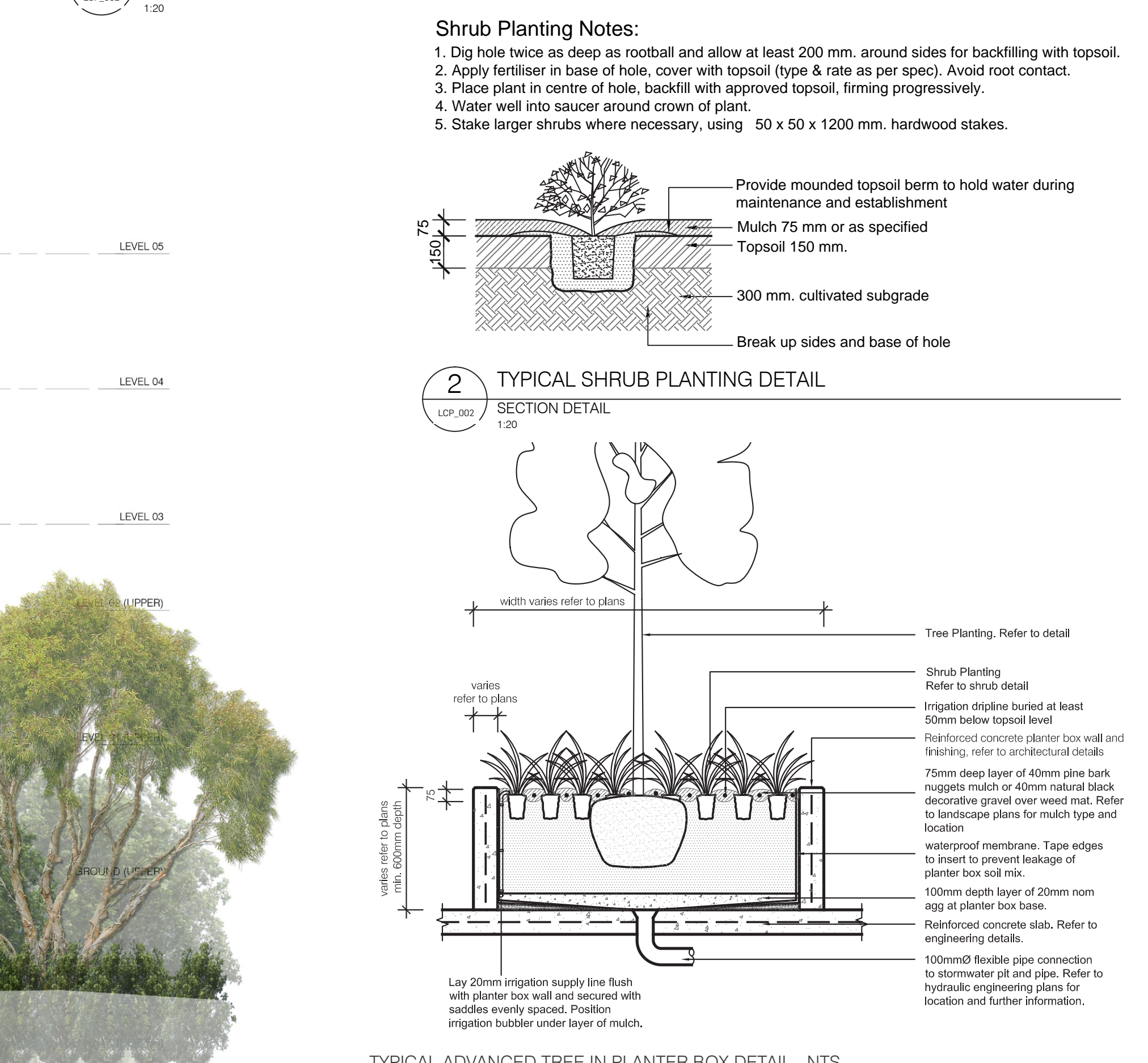
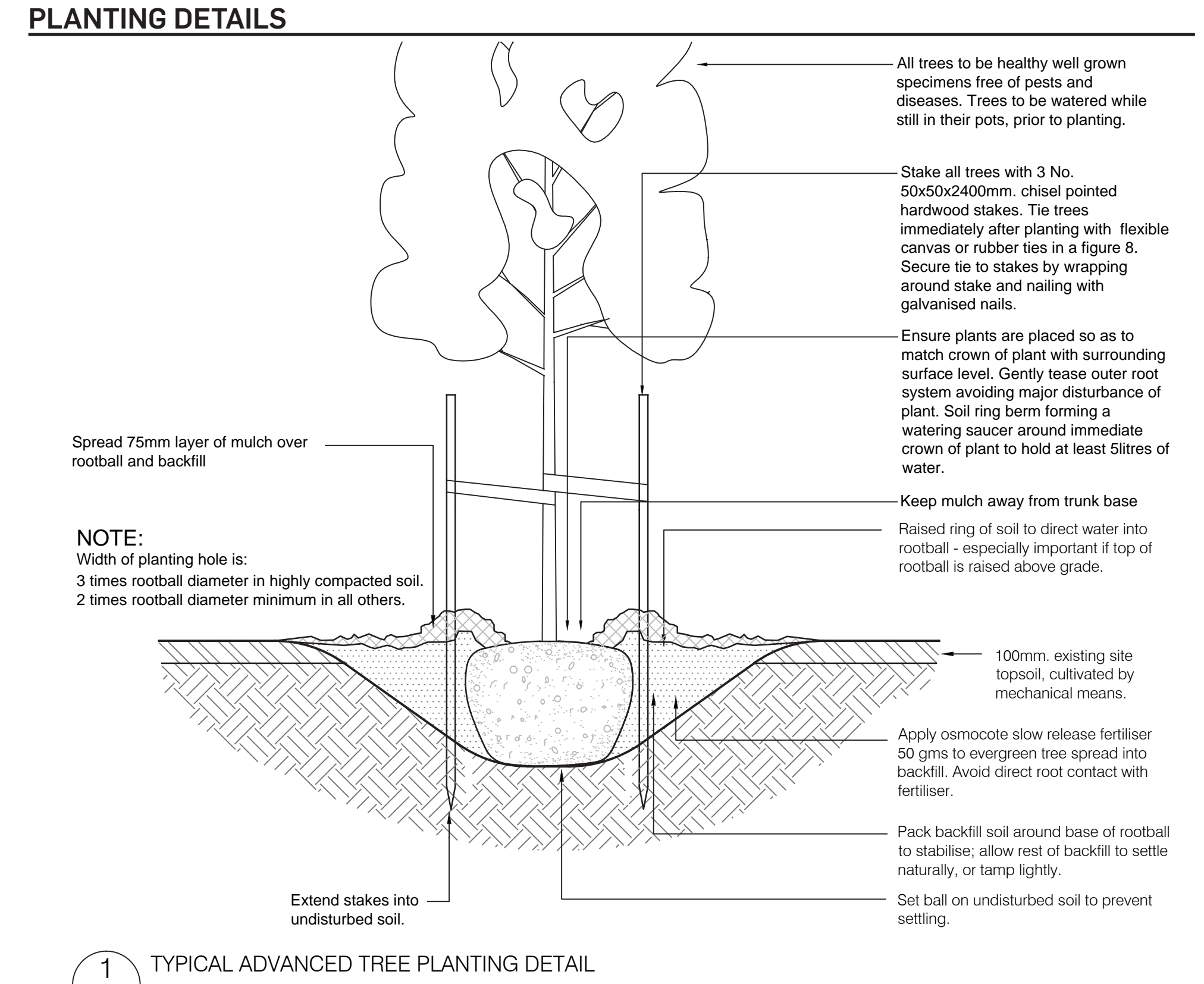
- PROPOSED STREET TREE TO COUNCIL APPROVAL
- EXISTING TREE IN RESERVE
- PROPOSED TREE IN MULCHED AND IRRIGATED GARDEN BEDS REFER TO SUGGESTED PLANT SCHEDULE
- PROPOSED TREE IN MULCHED AND IRRIGATED GARDEN BEDS REFER TO SUGGESTED PLANT SCHEDULE
- PROPOSED TREE IN MULCHED AND IRRIGATED GARDEN BEDS REFER TO SUGGESTED PLANT SCHEDULE
- PROPOSED TREE IN MULCHED AND IRRIGATED GARDEN BEDS REFER TO SUGGESTED PLANT SCHEDULE
- PROPOSED HEDGING IN MULCHED AND IRRIGATED GARDEN BEDS REFER TO SUGGESTED PLANT SCHEDULE
- PROPOSED PLANTING IN MULCHED AND IRRIGATED GARDEN BEDS REFER TO SUGGESTED PLANT SCHEDULE
- PROPOSED CLIMBERS IN MULCHED AND IRRIGATED GARDEN BEDS REFER TO SUGGESTED PLANT SCHEDULE
- PROPOSED OVERLAND FLOW GRAVEL SWALE TO FUTURE DETAIL
- PROPOSED ARTIFICIAL TURF TO FURTHER DETAIL
- PROPOSED PLANTERS TO FUTURE DETAIL
- PROPOSED BLUESTONE PAVING OR SIMILAR TO FUTURE DETAIL
- PROPOSED CONCRETE OR SIMILAR TO FUTURE DETAIL
- PEBBLES FINISH TO ARCHITECT'S DETAILS
- SITE BOUNDARY
- EXTENT OF BASEMENT LANDSCAPING BELOW

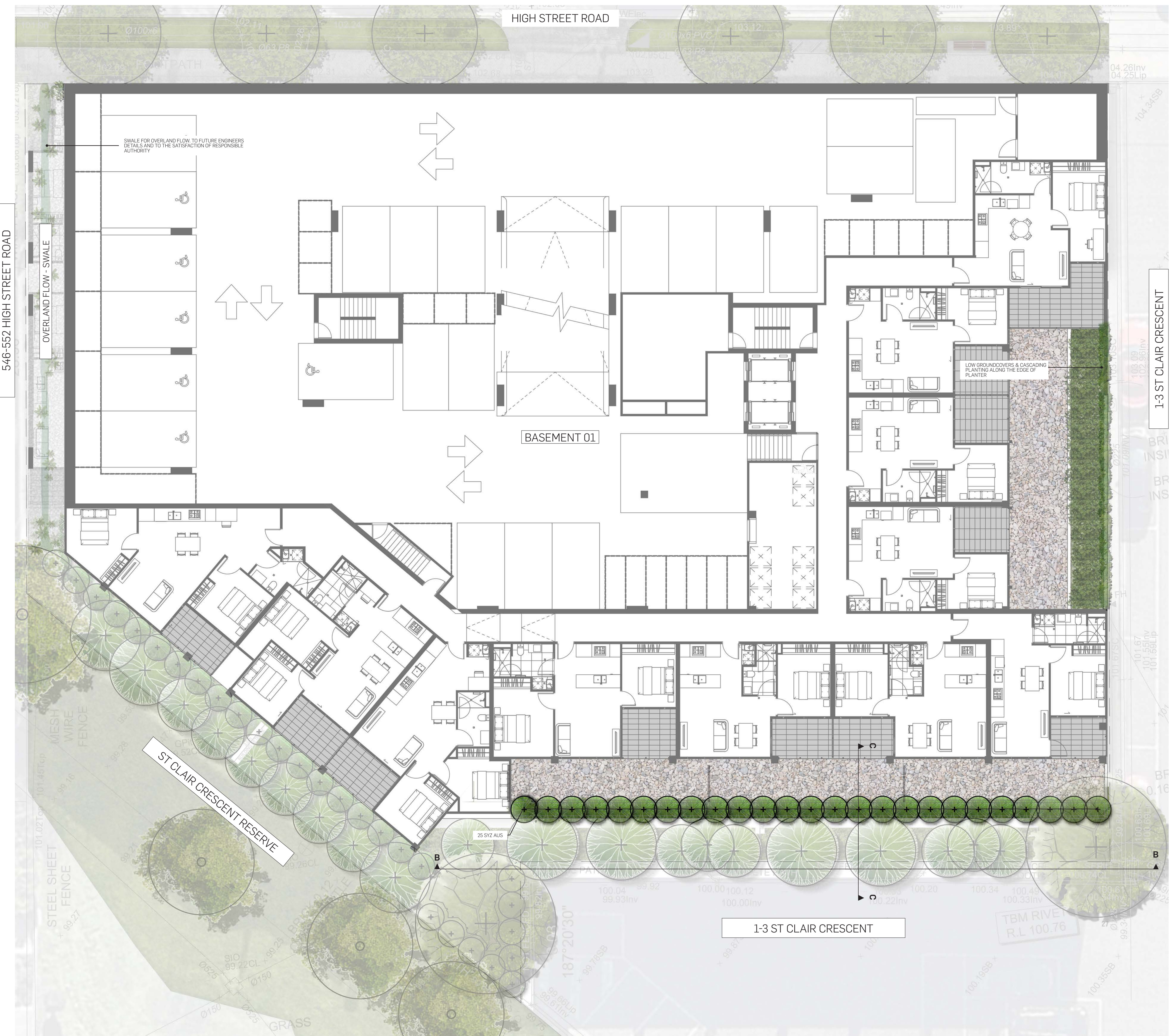


PLANT SCHEDULE

Code	Botanical Name	Common name	Size at maturity (HxW)	Pot / Installation size	Qty
TREES					
ACE pal	<i>Acer palmatum</i> 'Villa Taranto'	Villa Taranto Maple	3m x 2m	450/1.8m	5
BET pen	<i>Betula pendula</i> 'Moos White'	Moos White Birch	10m x 5m	450/1.8m	7
CIT lim	<i>Citrus limon</i> ' Meyer'	Meyer Lemon	5.20m x 4.55m	450/1.8m	244
EUC mel	<i>Eucalyptus melliodora</i>	Yellow Box	10.30m x 8.20m	450/1.8m	2
LAG ind	<i>Lagerströmia indica</i> 'Tuscany'	Crape Myrtle	5.15m x 4.7m	450/1.8m	3
PVR ca	<i>Pyrus calleryana</i> 'Capital Pear'	Capital Pear	3.1m x 3m	450/1.8m	7
PVR fr	<i>Pyrus calleryana</i> 'Frontier'	Frontier Pear	1.0m x 4m	450/1.8m	7
SYZ aus	<i>Syzygium australe</i> 'Winecreek'	Brush Cherry	5m x 1.5m	450/1.8m	53
TBM riv	<i>Fraxinus lanceata</i> 'Lanceolax'	Kanuka Gum	8m x 4m	450/1.8m	6
SUBTOTAL					
SHRUBS					
ACE pal	<i>Azalea</i> 'Alba Magnifica'	Alba Magnifica Azalea	1.4m x 3m	200mm/0.4x0.3m	32
BET pen	<i>Pieris japonica</i> 'Temple Bells'	Temple Bells	1.5m x 1.5m	200mm/0.3x0.3m	9
CIT rev	<i>Citrus revoluta</i>	Sage Palm	3m x 1.5m	200mm/0.3x0.3m	14
EUC ca	<i>Eucalyptus calycina</i> 'Shear Falls'	Shear Falls	1.5m x 2.5m	200mm/0.3x0.3m	9
SYZ par	<i>Syzygium parvifolia</i>	Small Leaf Streetzia	1.5m x 1.5m	200mm/0.3x0.3m	19
GROUNDCOVERS & GRASSES					
CIL min	<i>Civica minima</i>	Kaffee Lily	0.5m x 0.5m	200mm/0.5x0.5m	35
AGL rep	<i>Agrostis repens</i> 'Cattara Grant'	Cattara's Giant Blueweed	Groundcover	140mm/0.2x0.2m	362
DIC rep	<i>Dichondra repens</i>	Watercress	0.3 x 1m	140mm/0.2x0.2m	244
ROS off	<i>Rosa multiflora</i> 'Princess'	Princess Rose	Groundcover/Cascading	140mm/0.2x0.3m	180
LGM san	<i>Lomandra longifolia</i>	Spry-headed Mat-Rush	3m x 1.5m	140mm/0.2x0.3m	161
DIC cal	<i>Dichondra argentea</i> 'Silver Falls'	Silver Falls	Groundcover/Cascading	140mm/0.2x0.2m	78
ART ce	<i>Anthyroidium cirratum</i>	New Zealand Rock Lily	0.75m x 0.75m	140mm/0.2x0.2m	74
COM cro	<i>Convolvulus crorum</i>	Silver Bush	0.4m x 0.4m	140mm/0.2x0.2m	223
HEB can	<i>Hebe canaliculata</i>	Algerian Ivy	Spreading	140mm/0.2x0.4m	65
CLIMBERS					
CLC jum	<i>Clematis jumala</i>	Climbing Lily	Self-clinging climber	140mm/0.2x0.3m	67
TBA jas	<i>Trachelium germanicum</i> 'Jasminoides'	Star Jasmine	Twinning climber	140mm/0.2x0.4m	18

Note: * indicate selected from 10.C Street Tree Planting List in Street Tree Strategy 2016 by City of Monash





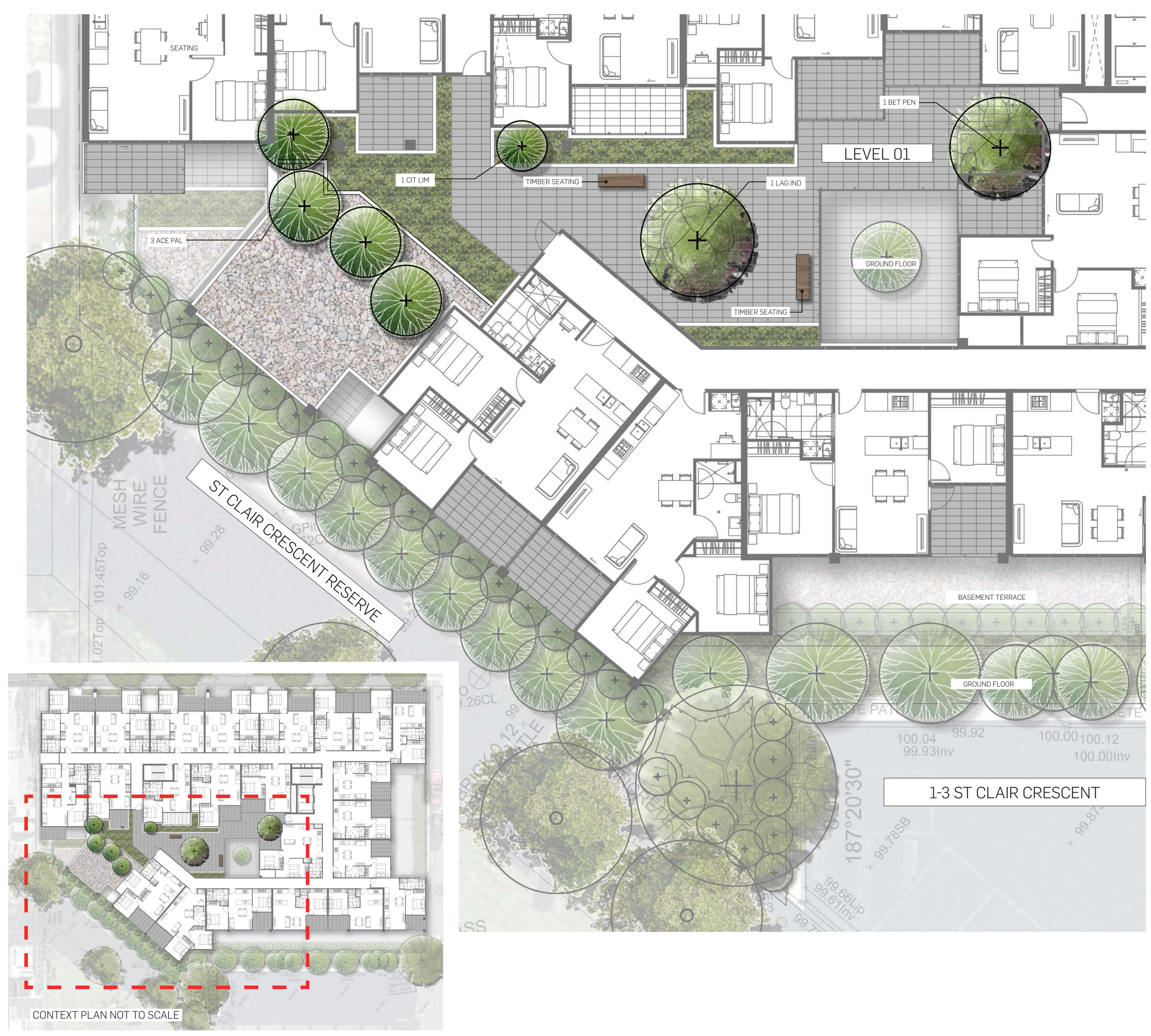
BASEMENT 01



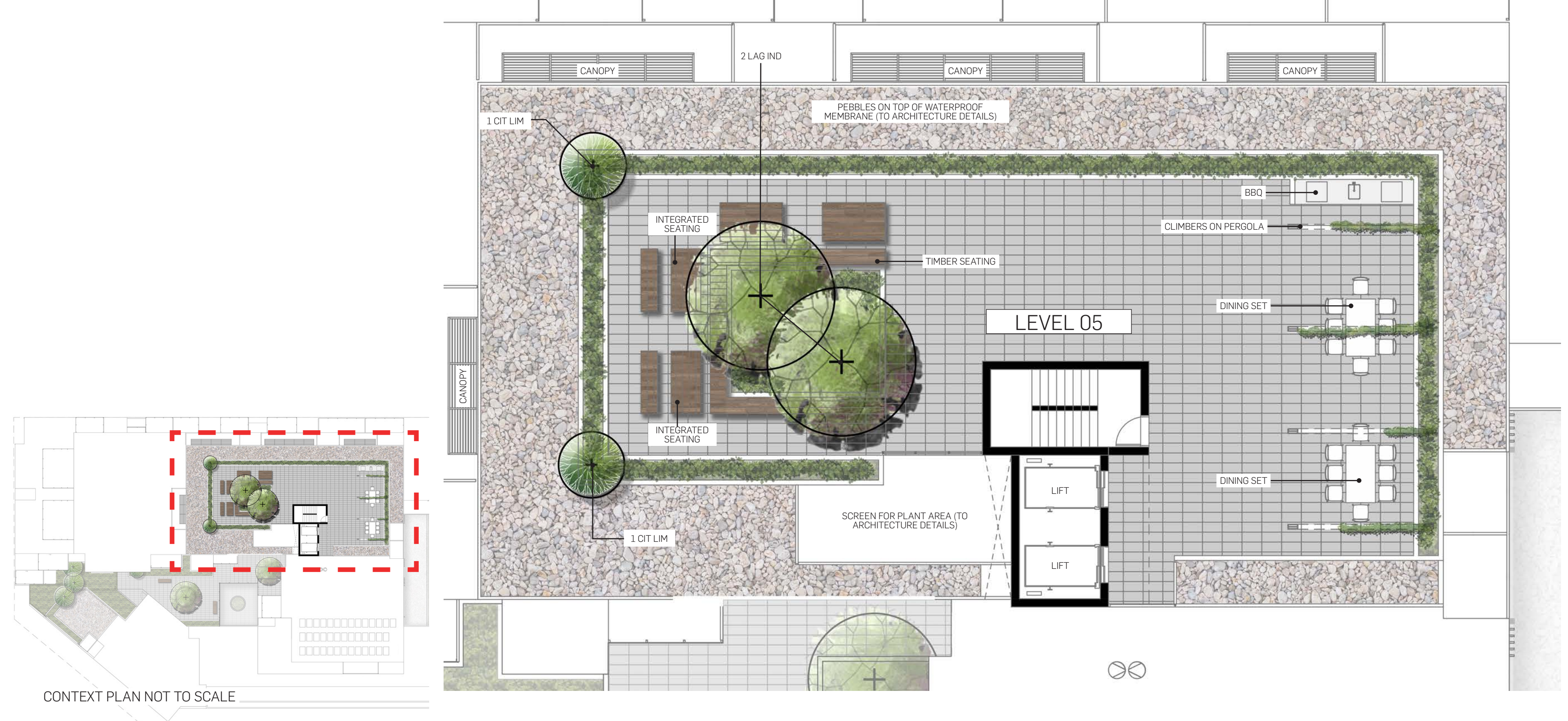
INDICATIVE ELEVATION (BB) OF LANDSCAPE BUFFER



INDICATIVE SECTION (CC) OF BASEMENT 01 TERRACE



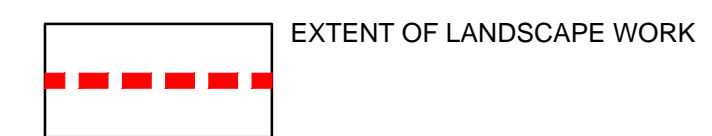
FIRST FLOOR



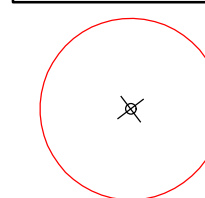
LEVEL 05 - ROOF



GENERAL LEGEND

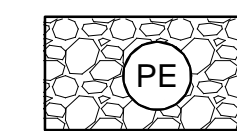


EXTENT OF LANDSCAPE WORK



EXISTING TREE TO BE REMOVED

FINISHES

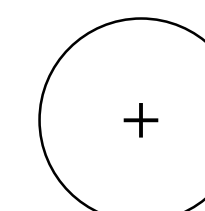


PEBBLES TO ARCHITECTURE DETAILS

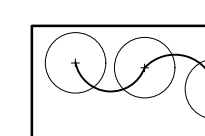


OVERLAND FLOW PLANTED DRY ROCK SWALE 150MM DIA. ROCKS AND 20MM DIA. GRAVEL

PLANTING LEGEND



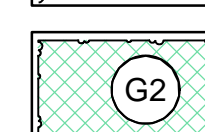
TREE



SHRUBS

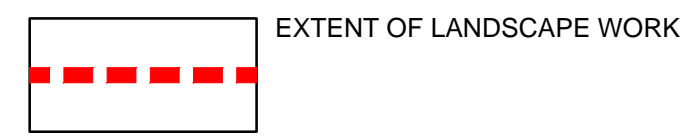


G1 : GARDEN BED PROFILE 1 (ON STRUCTURE)

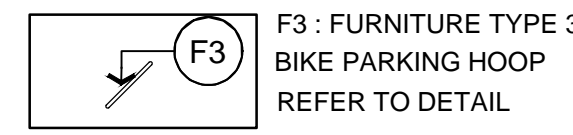
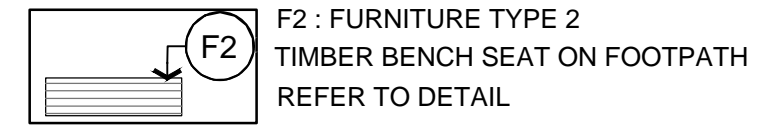
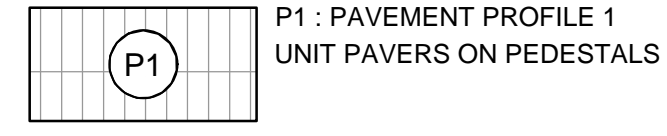


G2 : GARDEN BED PROFILE 2 (ON GRADE) 75MM DEEP MULCH, 300MM DEEP TOPSOIL 150MM DEEP RIP SUBGRADE

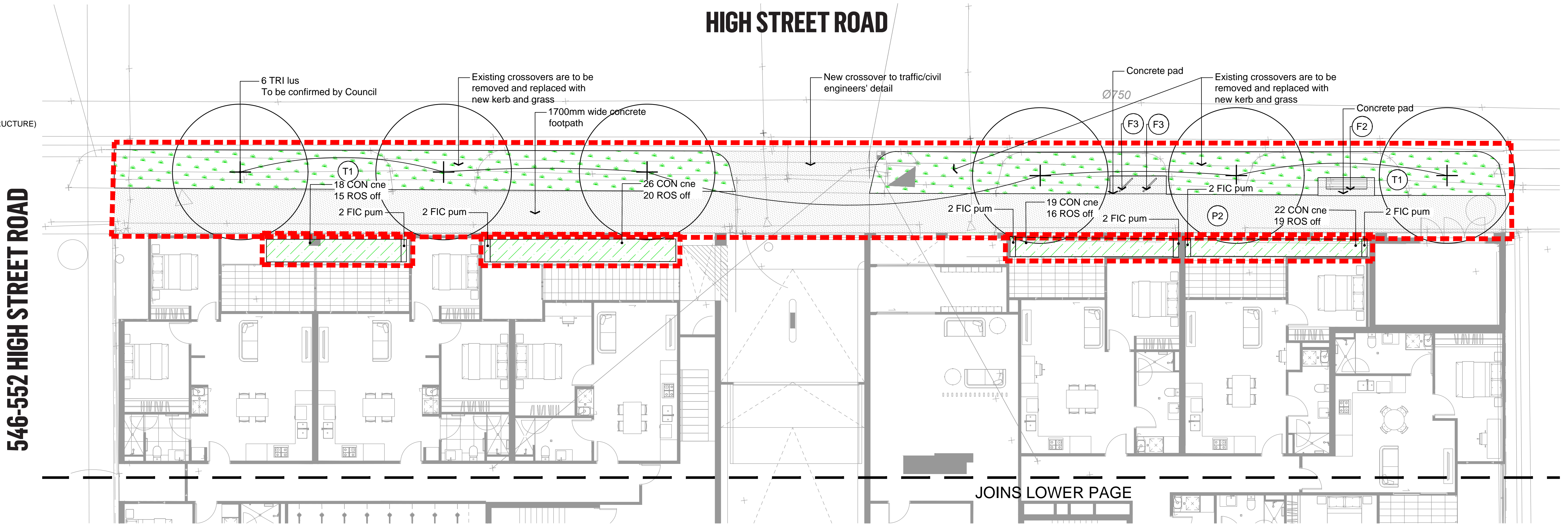
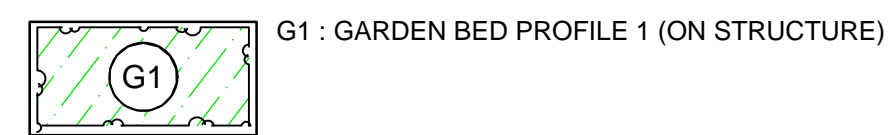
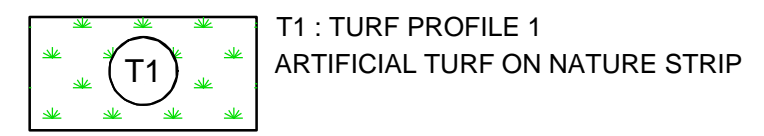
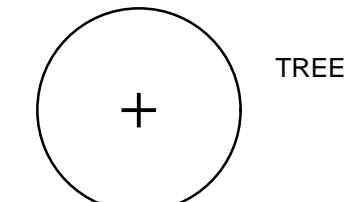
GENERAL LEGEND



FINISHES



PLANTING LEGEND



JOINS UPPER PAGE

GENERAL LEGEND

EXTENT OF LANDSCAPE WORK

EXISTING TREE TO BE RETAINED

FINISHES

P1 : PAVEMENT PROFILE 1
UNIT PAVERS ON PEDESTALS

PLANTING LEGEND

TREE

SHRUBS

G1 : GARDEN BED PROFILE 1 (ON STRUCTURE)

G2 : GARDEN BED PROFILE 2 (ON GRADE)
75MM DEEP MULCH, 300MM DEEP TOPSOIL
150MM DEEP RIP SUBGRADE

19 SYZ aus

22 CON one
17 ROS off

6 STR par
23 DIC sil

6 DIC sil

1 ACE pal

2 PYR fr

6 PYR ca

1 PYR fr

9 SYZ aus

1 PYR ca

2 PYR fr

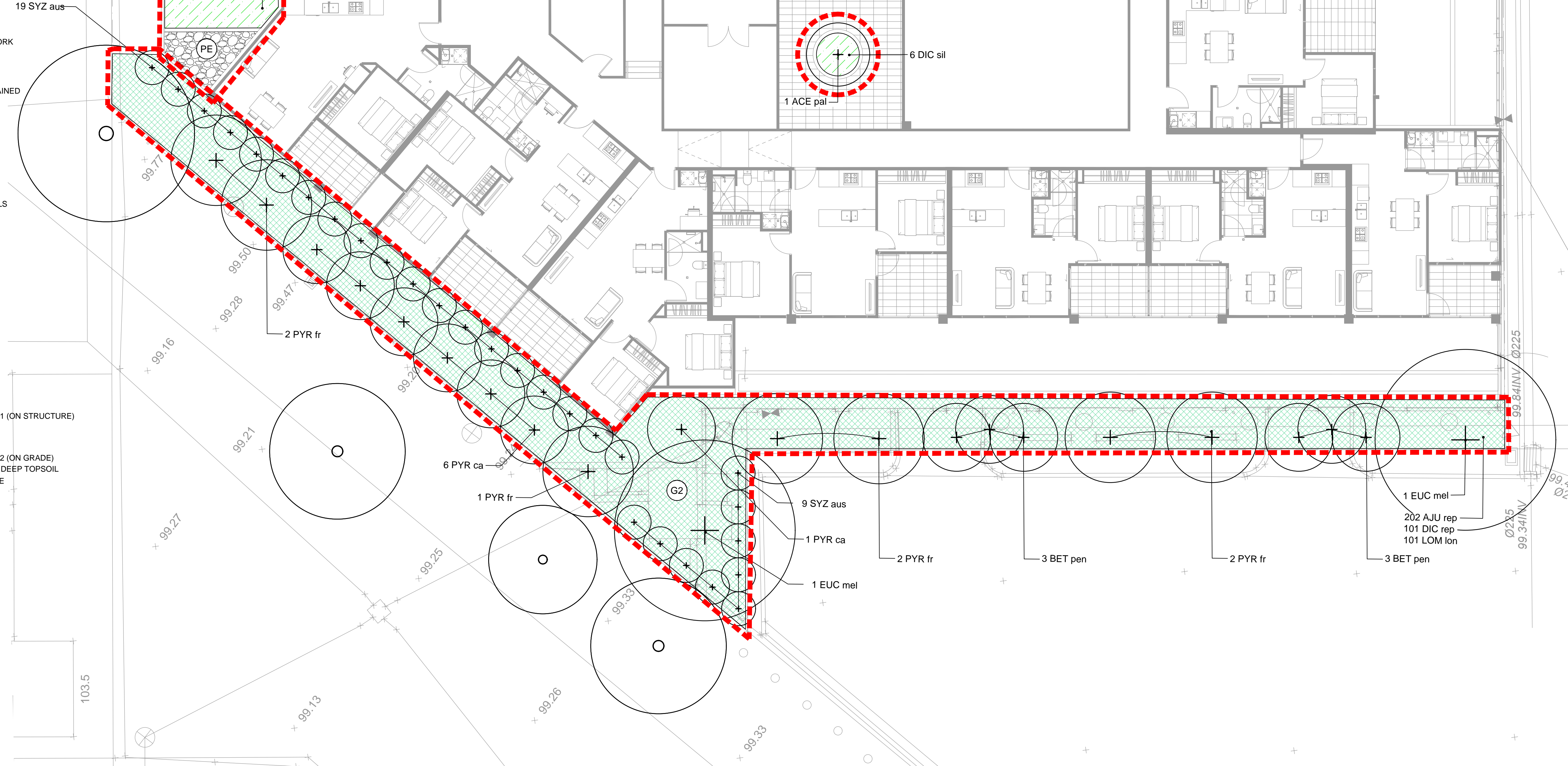
3 BET pen

2 PYR fr

1 EUC mel

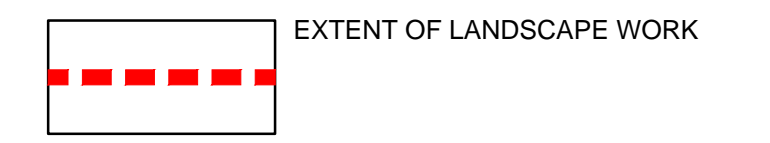
202 AJU rep
101 DIC rep
101 LOM Ion

3 BET pen

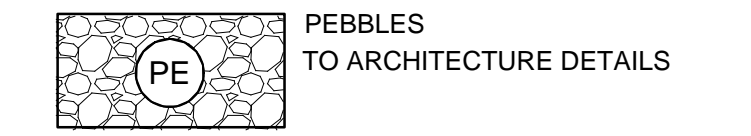
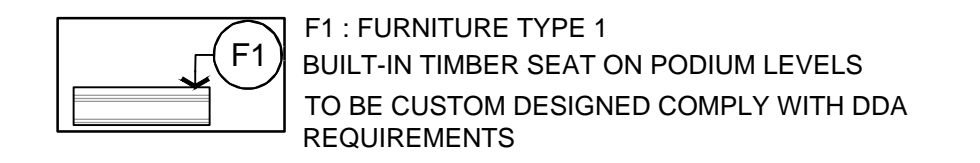
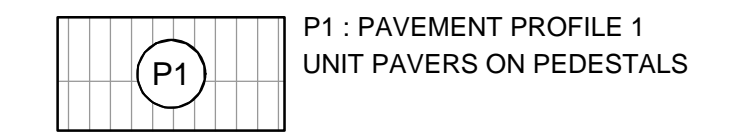




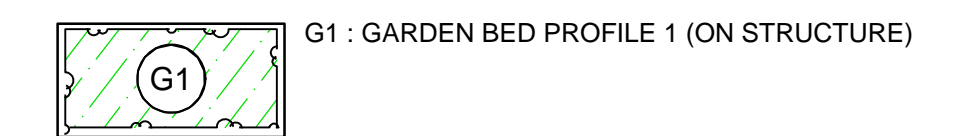
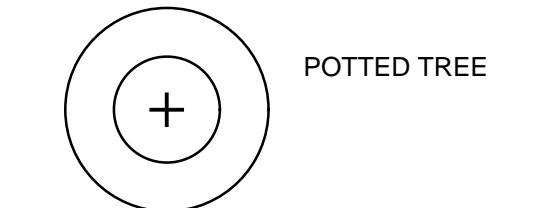
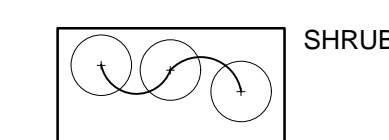
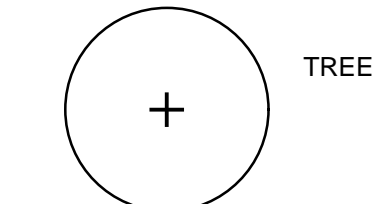
GENERAL LEGEND

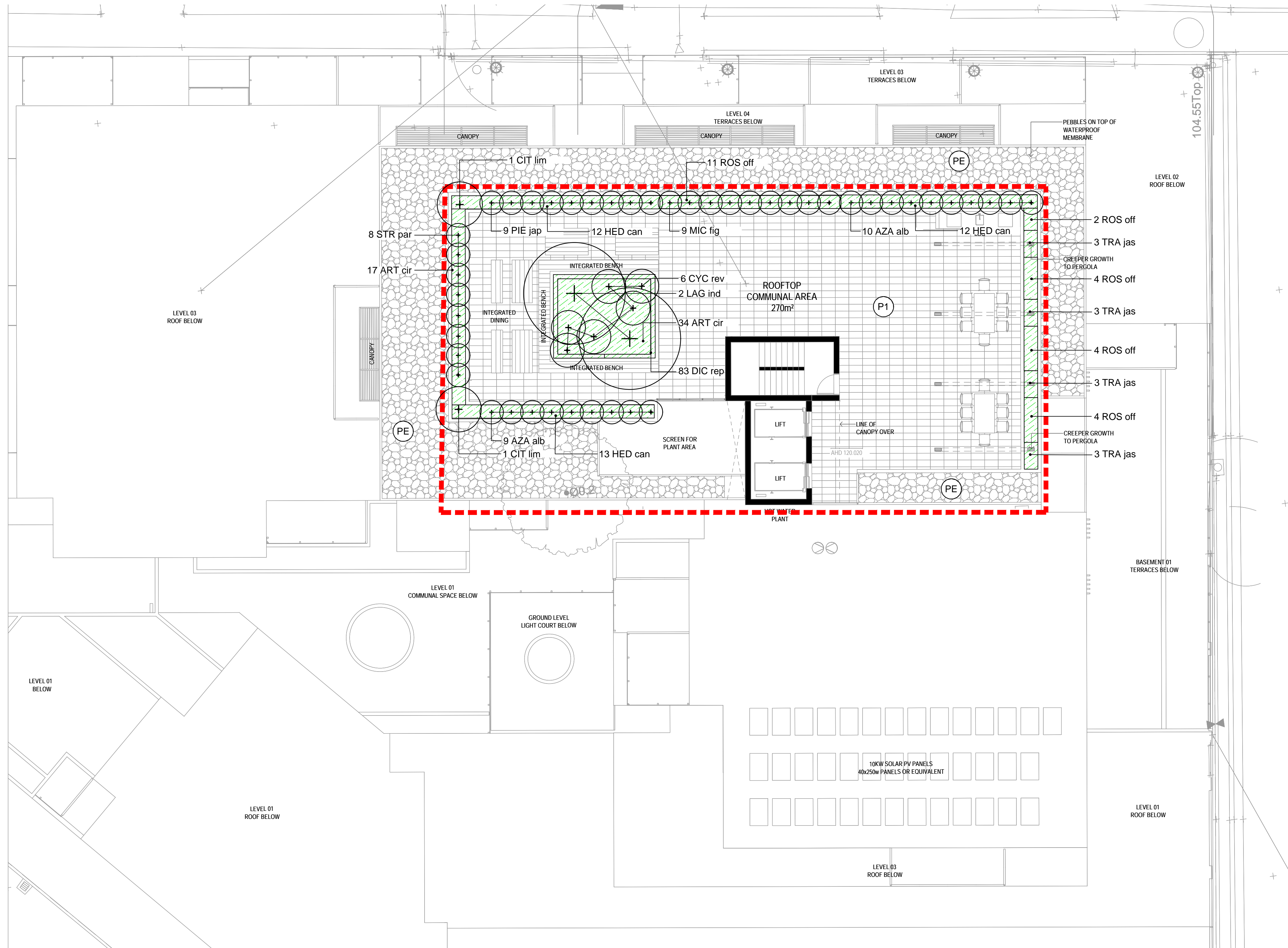


FINISHES

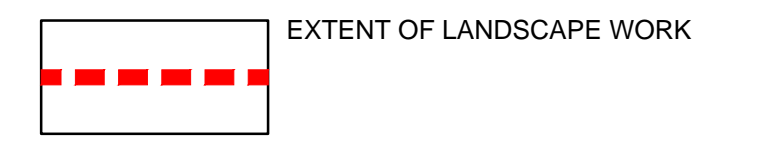


PLANTING LEGEND

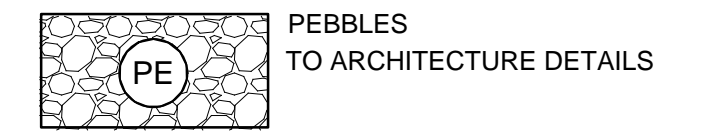
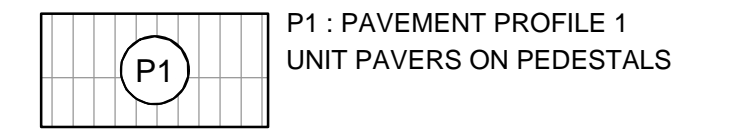




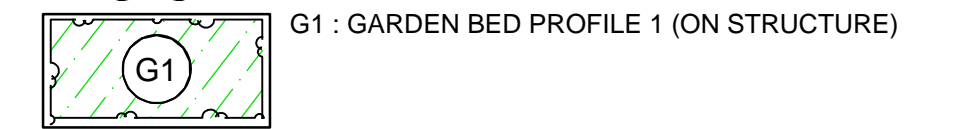
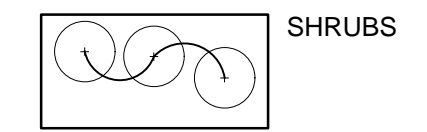
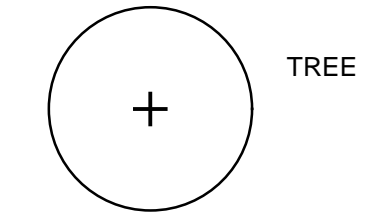
GENERAL LEGEND



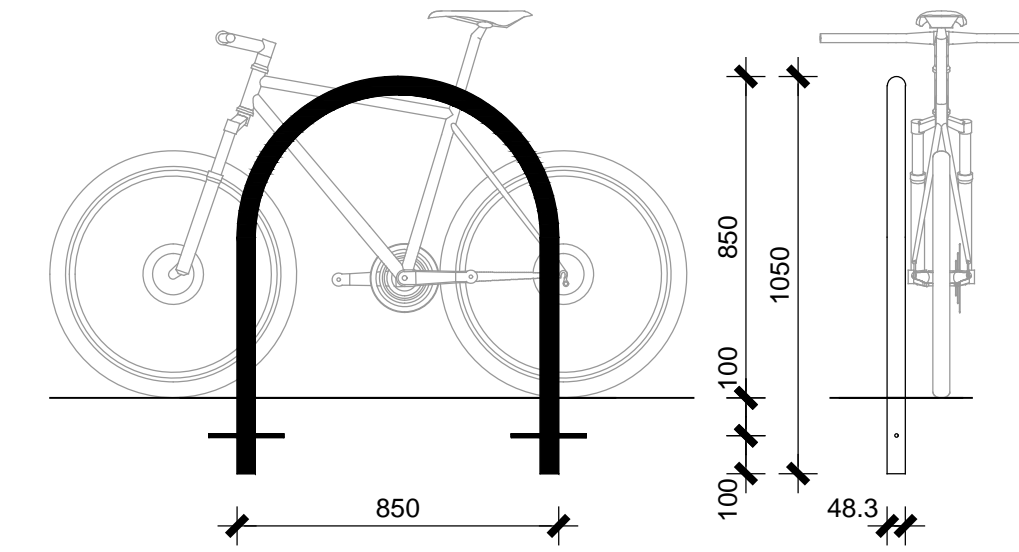
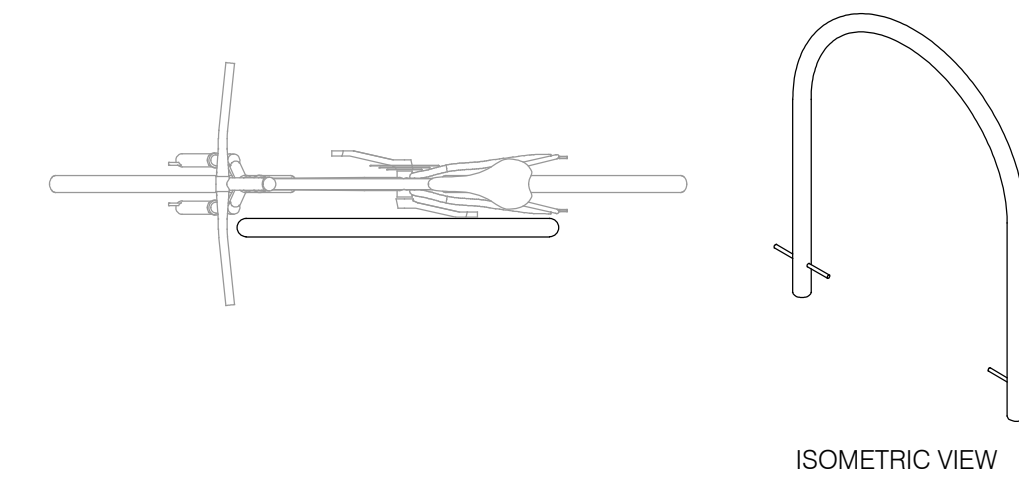
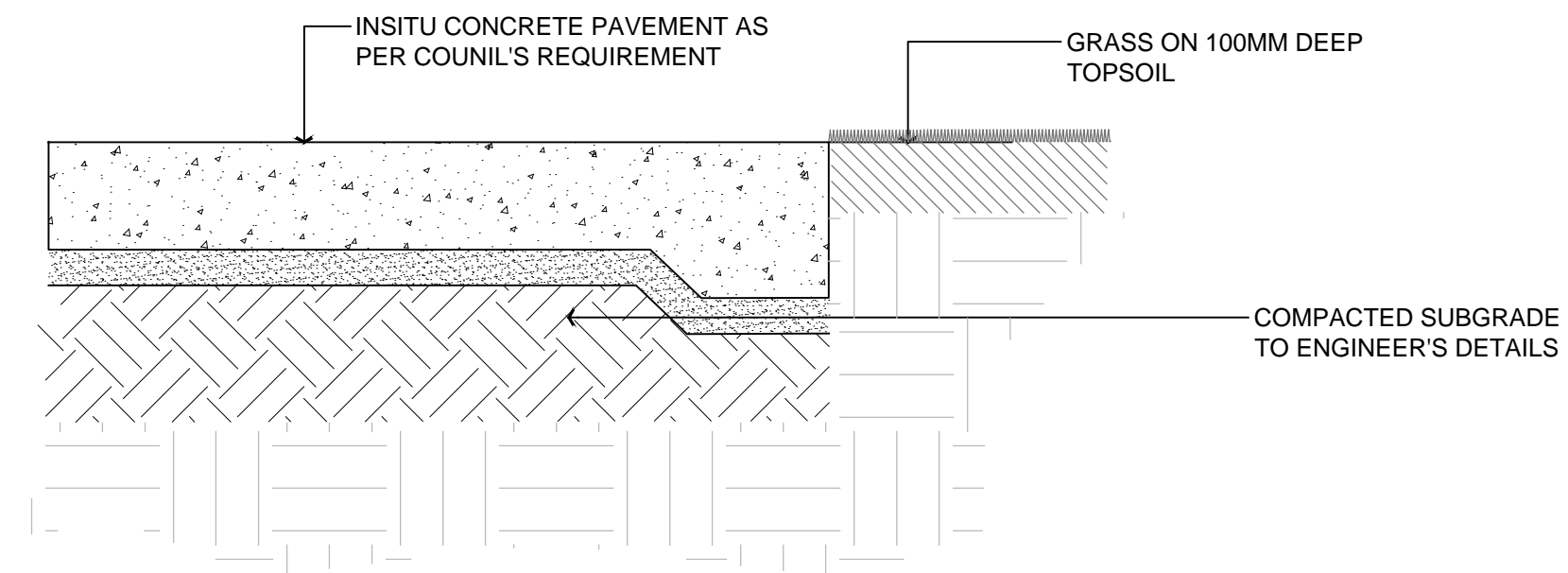
FINISHES



PLANTING LEGEND



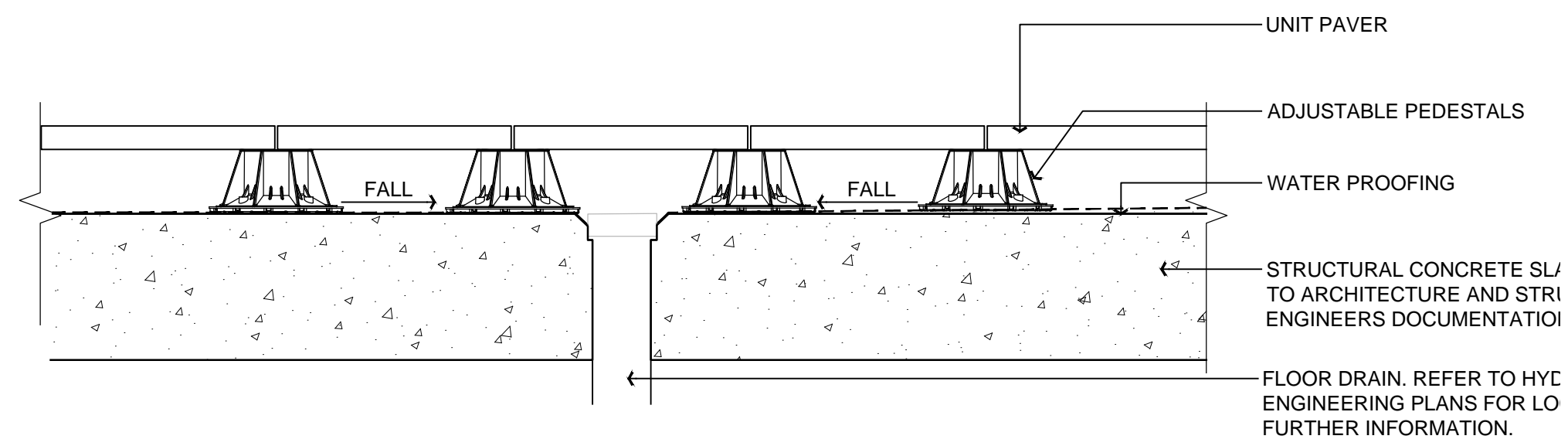
NOTES:
ROOF TOP FURNITURE SUBJECTS TO
ARCHITECT'S DETAILS



F3 - BIKE PARKING HOOPS
(CORA CBR2F)

SCALE 1:20

1 ON GRADE CONCRETE PATH ON NATURE STRIP DETAIL
SCALE 1:10 @ A1



2 ON-STRUCTURE TYPICAL PAVEMENT DETAIL
SCALE 1:10 @ A1



F2 - TIMBER BENCH ON FOOTPATH
(SFA, Classic Plaza DDA)