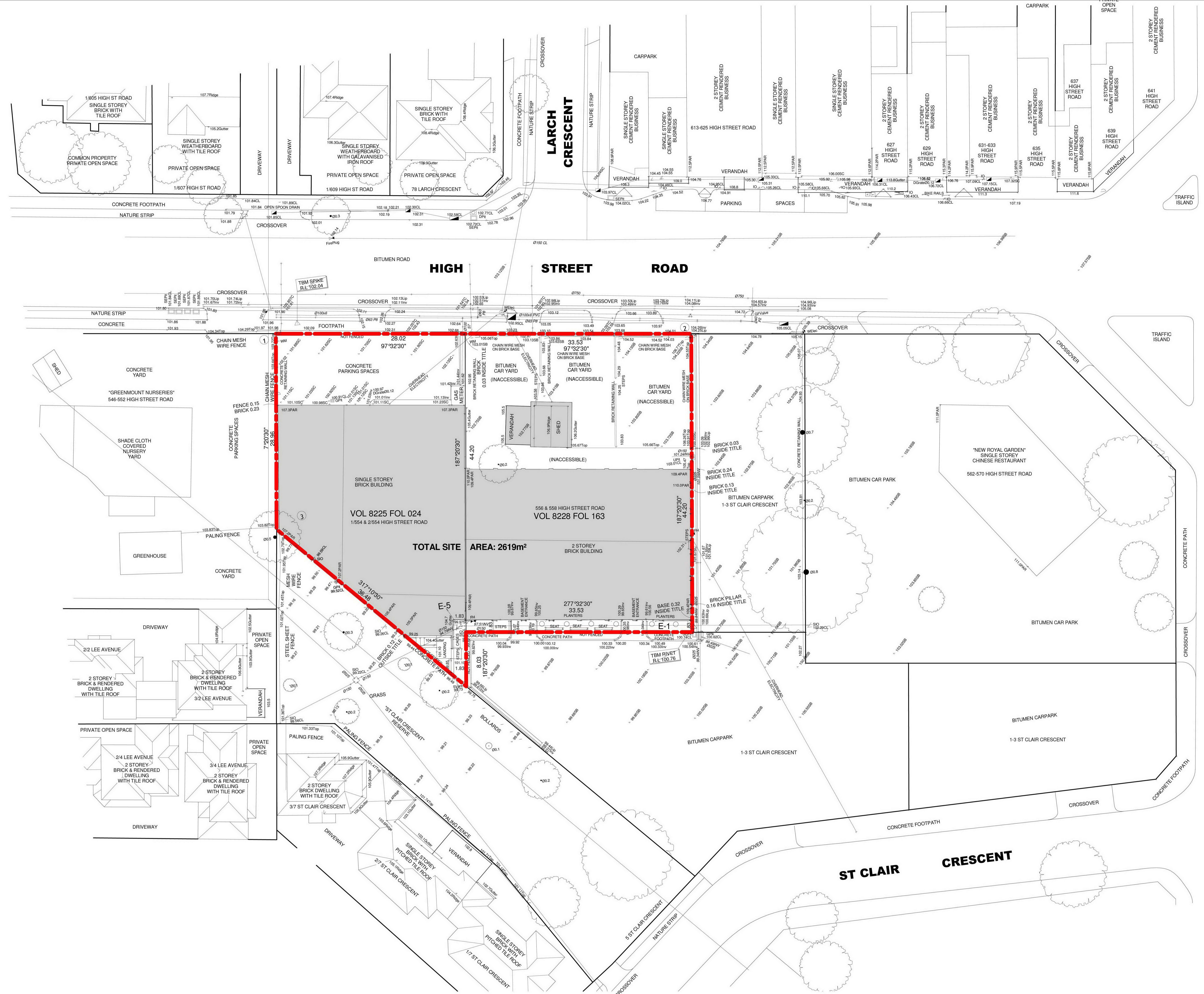


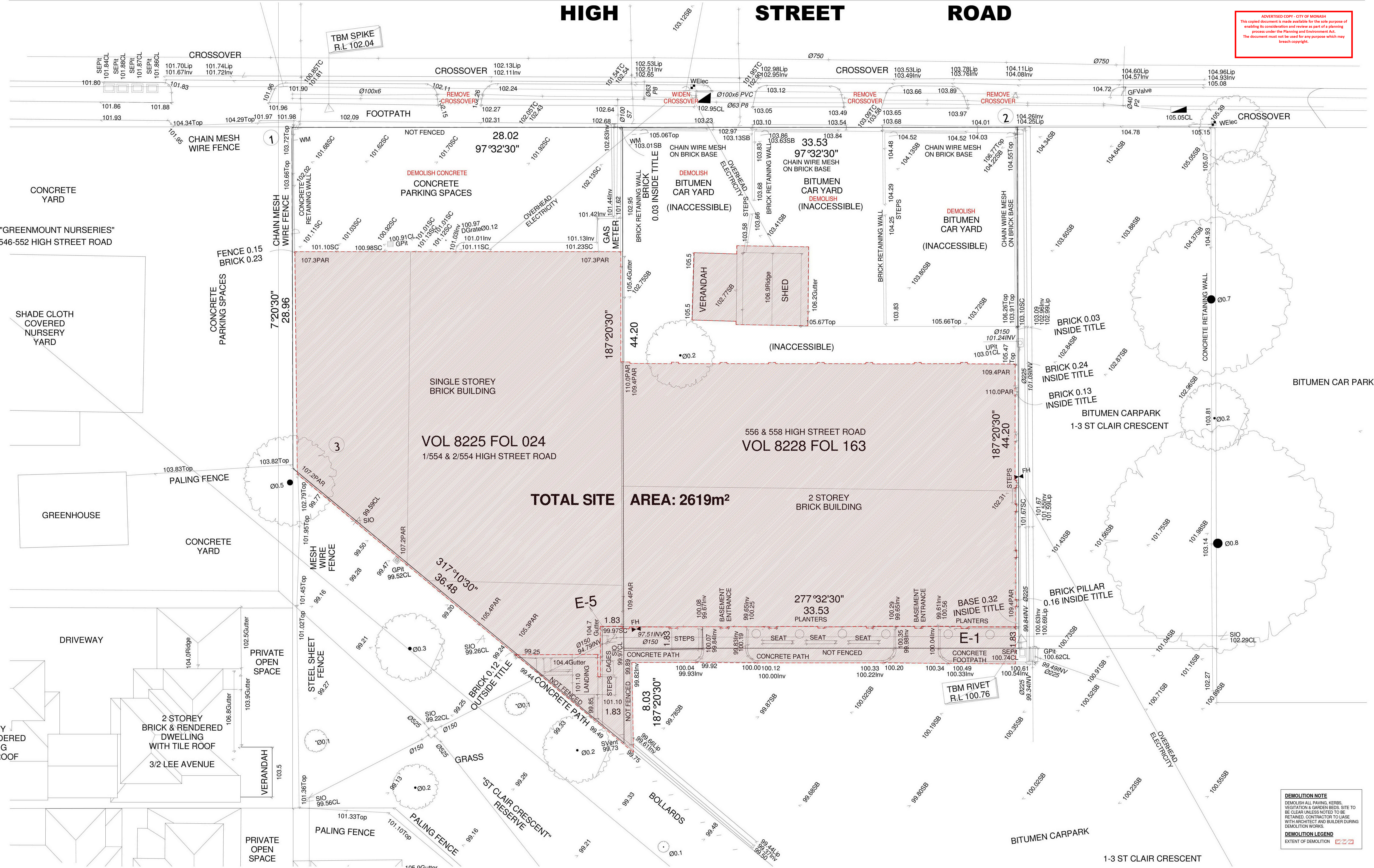
ADVERTISED COPY - CITY OF MONASH  
 This copied document is made available for the sole purpose of enabling its consideration and review as part of a planning process under the Planning and Environment Act.  
 The document must not be used for any purpose which may breach copyright.



REV	DATE	REVISION	BY	CHK	REV	DATE	REVISION	BY	CHK
D	18.06.19	VCAT - FINAL HEARING	KH	DC					

# HIGH STREET ROAD

ADVERTISED COPY - CITY OF MONASH  
This copied document is made available for the sole purpose of enabling its consideration and review as part of a planning process under the Planning and Environment Act. The document must not be used for any purpose which may breach copyright.



**CS-A**  
Cera Stribley Architects  
Cera Stribley Pty. Ltd.  
ABN 29 350 585 700  
+ 61 3 9533 2582  
Info@cs-a.com.au  
www.cs-a.com.au  
Studio 4, 249 Chapel St  
Prahran VIC 3181 AUS

**NOTES**  
Do not scale. Contractor must verify all dimensions on site before commencing any work or preparing shop drawings which must be approved by the architect before manufacture. Any extra detailed work shown on this drawing must be claimed and approved before proceeding.

**COPYRIGHT**  
Reproduction of the whole or part of this document constitutes an infringement of copyright. The information, ideas and concepts contained in this document is / are confidential. The recipient of this document is / are prohibited from disclosing such information, ideas and concepts to any person without prior written consent of the architect holder.

REV DATE	REVISION	BY	CHK	REV DATE	REVISION	BY	CHK
A	12.12.18 Town Planning RFI	KH	DC				
D	18.06.19 VCAT - FINAL HEARING	KH	DC				

**PROJECT**  
554-556 HIGH STREET ROAD  
554-556 HIGH STREET ROAD, MOUNT WAVERLEY  
OVER 55'S RESIDENTIAL DEVELOPMENT

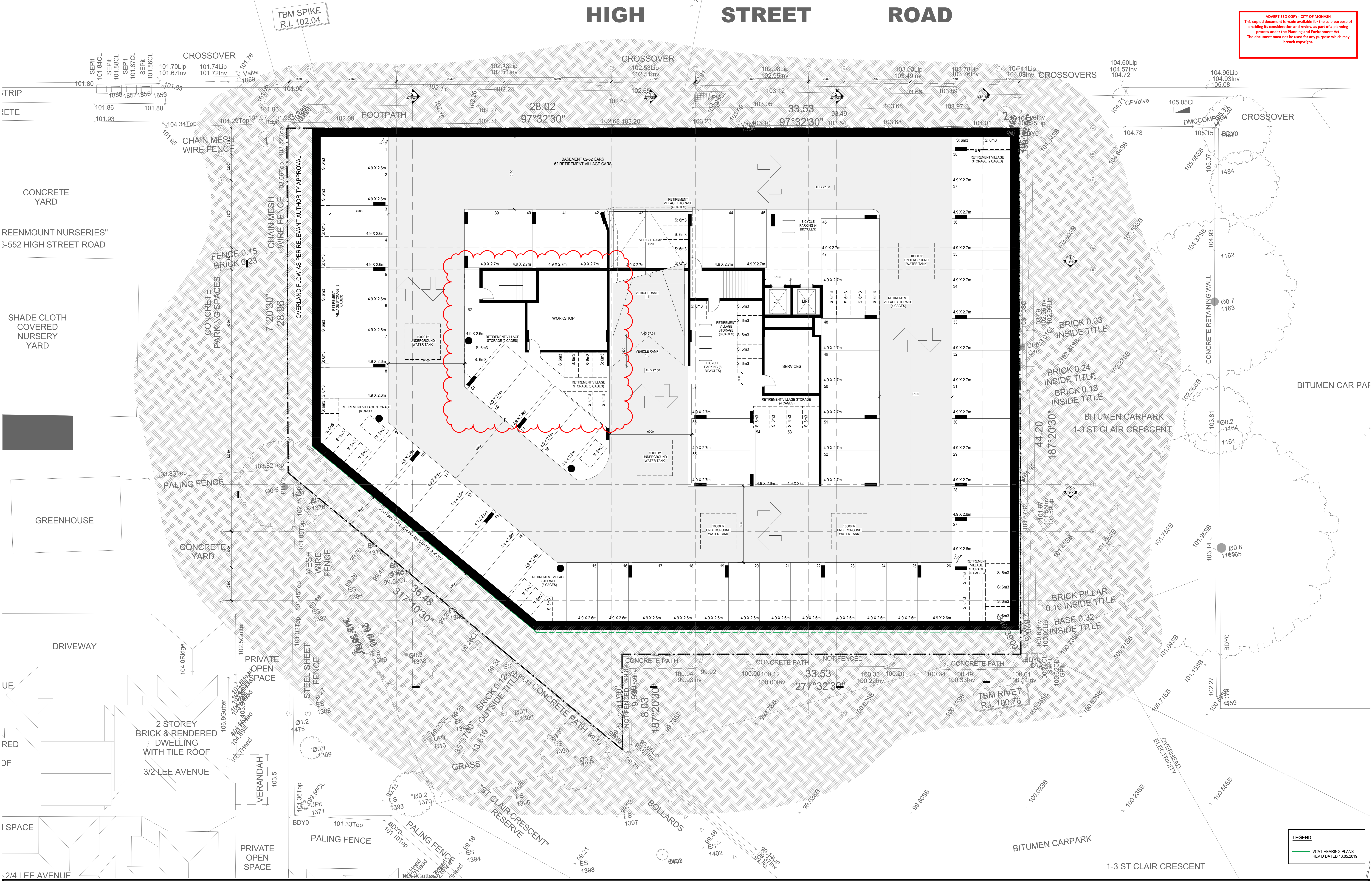
**DRAWING STATUS**  
TOWN PLANNING - ENDORSEMENT

**JOB N°** 17020  
**REVISION N°** D  
**DATE** 21.12.2020  
**SCALE** 1:100 @A0  
**DRAWN BY** BM  
**CHECKED BY** DC

**DRAWING TITLE**  
DEMOLITION PLAN

**A-TP-102**

ADVERTISED COPY - CITY OF MONASH  
 This copied document is made available for the sole purpose of enabling its consideration and review as part of a planning process under the Planning and Environment Act.  
 The document must not be used for any purpose which may breach copyright.



**CS-A**  
 Cera Stribley Architects  
 Cera Stribley Pty. Ltd.  
 ABN 29 350 585 700  
 \* 61 3 9533 2582  
 Info@cs-a.com.au  
 www.cs-a.com.au  
 Studio 4, 249 Chapel St  
 Pratharra VIC 3181 AUS

**NOTES**  
 Do not scale. Contractor must verify all dimensions on site before commencing any work or preparing shop drawings which must be approved by the architect before manufacture.  
 Any extra detailed work shown on this drawing must be claimed and approved before proceeding.

**COPYRIGHT**  
 Reproduction of the whole or part of this document constitutes an infringement of copyright.  
 The information, ideas and concepts contained in this document is / are confidential. The responsibility of this document is / are prohibited from disclosing such information, ideas and concepts to any person without prior written consent of the copyright holder.

REV	DATE	REVISION	BY	CHK
A	12.12.18	Town Planning RFI	KH	DC
B	24.08.19	WITHOUT PREJUDICE	KH	DC
D	18.08.19	VCAT - FINAL HEARING	KH	DC
E	16.09.20	REVISION	KH	DC

REV	DATE	REVISION	BY	CHK

**PROJECT**  
 554-556 HIGH STREET ROAD  
 554-556 HIGH STREET ROAD, MOUNT WAVERLEY  
 OVER 55'S RESIDENTIAL DEVELOPMENT

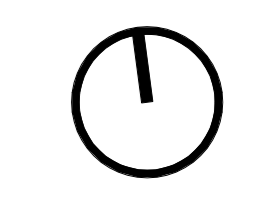
**DRAWING TITLES**  
 TOWN PLANNING - ENDORSEMENT

**JOB N°** 17020  
**REVISION N°** E  
**DATE** 18.01.2021  
**SCALE** 1:100 @A0  
**DRAWN BY** BM  
**CHECKED BY** DC

**DRAWING TITLE**  
 PROPOSED BASEMENT 02 PLAN

**LEGEND**  
 VCAT HEARING PLANS  
 REV D DATED 13.05.2019

**CS-A**  
 Cera Stribley Architects  
 Cera Stribley Pty. Ltd.  
 ABN 29 350 585 700  
 \* 61 3 9533 2582  
 Info@cs-a.com.au  
 www.cs-a.com.au  
 Studio 4, 249 Chapel St  
 Pratharra VIC 3181 AUS



ADVERTISED COPY - CITY OF MONASH  
 This copied document is made available for the sole purpose of enabling its consideration and review as part of a planning process under the Planning and Environment Act.  
 The document must not be used for any purpose which may breach copyright.



**CS-A**  
 Cera Stribley Architects  
 Cera Stribley Pty. Ltd.  
 ABN 29 350 585 700  
 \* 61 3 9533 2582  
 Info@cs-a.com.au  
 www.cs-a.com.au  
 Studio 4, 249 Chapel St  
 Prahran VIC 3181 AUS

**NOTES**  
 Do not scale. Contractor must verify all dimensions on site before commencing any work or preparing shop drawings which must be approved by the architect before manufacture.  
 Any extra detailed work shown on this drawing must be called and approved before proceeding.

**COPYRIGHT**  
 Reproduction of the whole or part of the document constitutes an infringement of copyright.  
 The information, ideas and concepts contained in this document is / are confidential. The responsibility of this document is / are prohibited from disclosing such information, ideas and concepts to any person without prior written consent of the copyright holder.

REV	DATE	REVISION	BY	CHK
A	12.12.18	Town Planning RFI	KH	DC
B	24.08.19	WITHOUT PREJUDICE	KH	DC
C	03.06.19	WITHOUT PREJUDICE - SKETCH	KH	DC
D	18.06.19	VCAT - FINAL HEARING	KH	DC
E	16.09.20	REVISION	KH	DC

REV	DATE	REVISION	BY	CHK

**PROJECT**  
 554-556 HIGH STREET ROAD  
 554-556 HIGH STREET ROAD, MOUNT WAVERLEY  
 OVER 55'S RESIDENTIAL DEVELOPMENT

**DRAWING STATUS**  
 TOWN PLANNING - ENDORSEMENT

**JOB N°** 17020  
**REVISION N°** E  
**DATE** 21.12.2020  
**SCALE** 1:100 @A0  
**DRAWN BY** BM  
**CHECKED BY** DC

**DRAWING TITLE**  
 PROPOSED BASEMENT 01 PLAN

**LEGEND**  
 VCAT HEARING PLANS  
 REV D DATED 13.05.2019

ADVERTISED COPY - CITY OF MONASH  
 This copied document is made available for the sole purpose of enabling its consideration and review as part of a planning process under the Planning and Environment Act.  
 The document must not be used for any purpose which may breach copyright.



**CS-A**  
 Cera Stribley Architects  
 Cera Stribley Pty. Ltd.  
 ABN 29 350 585 700  
 + 61 3 9533 2582  
 www.cs-a.com.au  
 info@cs-a.com.au  
 Studio 4, 249 Chapel St  
 Prahran VIC 3181 AUS

**NOTES**  
 Do not scale. Contractor must verify all dimensions on site before commencing any work or preparing shop drawings which must be approved by the architect before manufacture.  
 Any extra detailed work shown on this drawing must be claimed and approved before proceeding.

**COPYRIGHT**  
 Reproduction of the whole or part of the document constitutes an infringement of copyright.  
 The information, ideas and concepts contained in this document is / are confidential. The responsibility of this document is / are prohibited from disclosing such information, ideas and concepts to any person without prior written consent of the copyright holder.

REV DATE	REVISION	BY	CHK	REV DATE	REVISION	BY	CHK
A	12.12.18 Town Planning RFI	KH	DC				
B	24.08.19 WITHOUT PREJUDICE	KH	DC				
D	16.08.19 VCAT - FINAL HEARING	KH	DC				
E	16.09.20 REVISION	KH	DC				

**PROJECT**  
 554-556 HIGH STREET ROAD  
 554-556 HIGH STREET ROAD, MOUNT WAVERLEY  
 OVER 55'S RESIDENTIAL DEVELOPMENT

**DRAWING STATUS**  
 TOWN PLANNING - ENDORSEMENT

**LEGEND**  
 VCAT HEARING PLANS  
 REV D DATED 13.05.2019

**JOB N°** 17020  
**REVISION N°** E  
**DATE** 21.12.2020  
**SCALE** 1:100 @A0  
**DRAWN BY** BM  
**CHECKED BY** DC

**DRAWING TITLE**  
 PROPOSED GROUND PLAN

**A-TP-105**

ADVERTISED COPY - CITY OF MONASH  
 This copied document is made available for the sole purpose of enabling its consideration and review as part of a planning process under the Planning and Environment Act.  
 The document must not be used for any purpose which may breach copyright.



**CS-A**  
 Cera Stribley Architects  
 Cera Stribley Pty. Ltd.  
 ABN 29 350 585 700  
 + 61 3 9533 2582  
 info@cs-a.com.au  
 www.cs-a.com.au  
 Studio 4, 249 Chapel St  
 Prahran VIC 3181 AUS

**NOTES**  
 Do not scale. Contractor must verify all dimensions on site before commencing any work or preparing shop drawings which must be approved by the architect before manufacture.  
 Any extra entitled work shown on this drawing must be claimed and approved before proceeding.

**COPYRIGHT**  
 Reproduction of the whole or part of the document constitutes an infringement of copyright.  
 The information, ideas and concepts contained in this document is / are confidential. The responsibility of this document is / are prohibited from disclosing such information, ideas and concepts to any person without prior written consent of the copyright holder.

REV DATE	REVISION	BY	CHK	REV DATE	REVISION	BY	CHK
A	12.12.18 Town Planning RFI	KH	DC				
B	24.08.19 WITHOUT PREJUDICE	KH	DC				
E	16.09.20 REVISION	KH	DC				

**PROJECT**  
 554-556 HIGH STREET ROAD  
 554-556 HIGH STREET ROAD, MOUNT WAVERLEY  
 OVER 55'S RESIDENTIAL DEVELOPMENT

**DRAWING STATUS**  
 TOWN PLANNING - ENDORSEMENT

**JOB N°** 17020  
**REVISION N°** E  
**DATE** 21.12.2020  
**SCALE** 1:100 @A0  
**DRAWN BY** BM  
**CHECKED BY** DC

**DRAWING TITLE**  
 PROPOSED LEVEL 01 PLAN

**LEGEND**  
 VCAT HEARING PLANS  
 REV D DATED 13.05.2019

**A-TP-106**

# HIGH STREET ROAD

ADVERTISED COPY - CITY OF MONASH  
This copied document is made available for the sole purpose of enabling its consideration and review as part of a planning process under the Planning and Environment Act. The document must not be used for any purpose which may breach copyright.



**CS-A**  
Cera Stribley Architects  
Cera Stribley Pty. Ltd.  
ABN 29 350 585 700  
www.cs-a.com.au  
+ 61 3 9533 2582  
Info@cs-a.com.au  
Studio 4, 249 Chapel St  
Prahran VIC 3181 AUS

**NOTES**  
Do not scale. Contractor must verify all dimensions on site before commencing any work or preparing shop drawings which must be approved by the architect before manufacture. Any extra detailed work shown on this drawing must be claimed and approved before proceeding.

**COPYRIGHT**  
Reproduction of the whole or part of this document constitutes an infringement of copyright. The information, ideas and concepts contained in this document are confidential. The responsibility of this document is, are prohibited from disclosing such information, ideas and concepts to any person without prior written consent of the copyright holder.

REV DATE	REVISION	BY	CHK	REV DATE	REVISION	BY	CHK
A	12.12.18 Town Planning RFI	KH	DC				
B	24.05.19 WITHOUT PREJUDICE	KH	DC				
D	18.06.19 VCAT - FINAL HEARING	KH	DC				

**PROJECT**  
554-556 HIGH STREET ROAD  
554-556 HIGH STREET ROAD, MOUNT WAVERLEY  
OVER 55'S RESIDENTIAL DEVELOPMENT

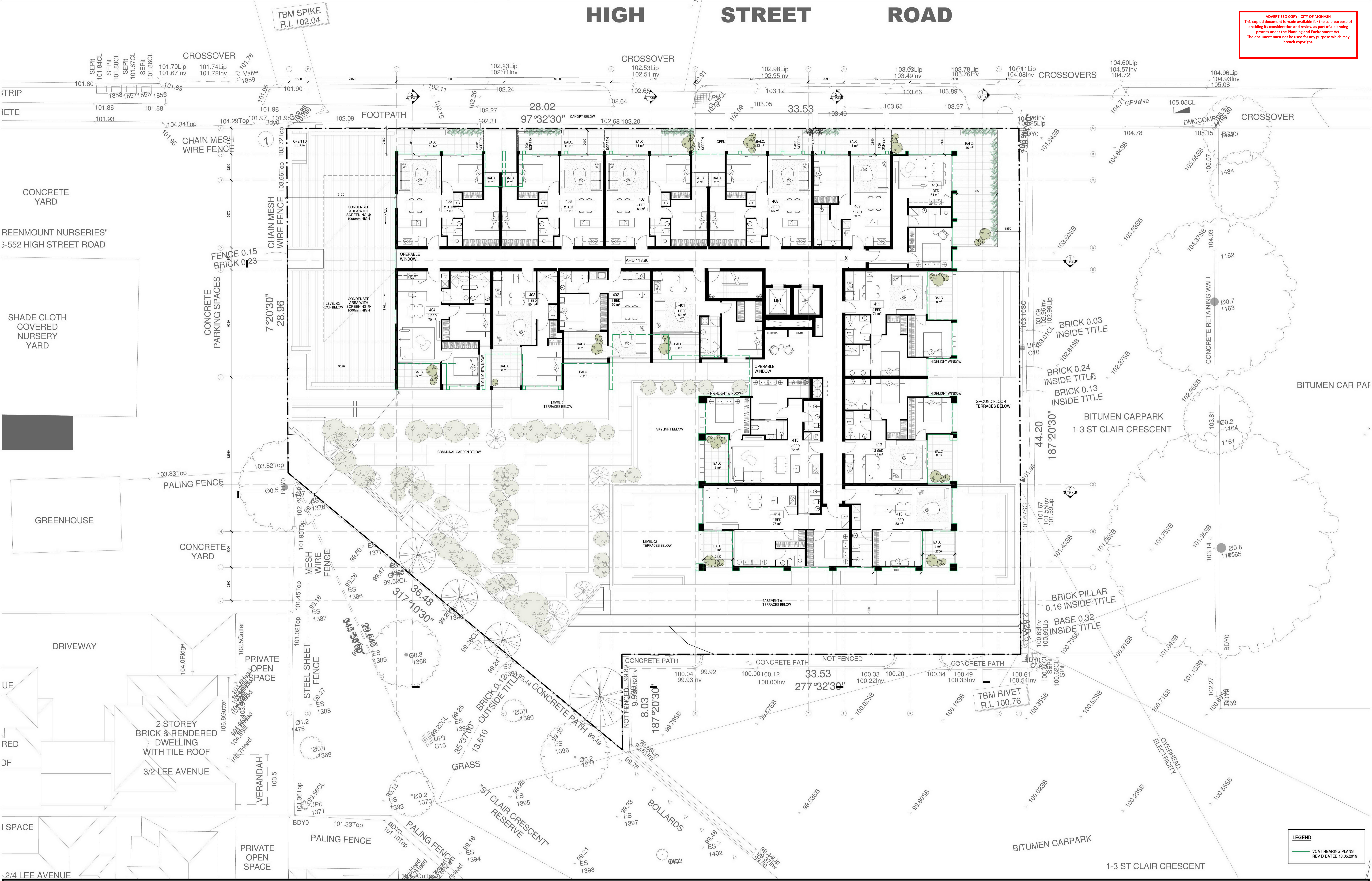
**DRAWING STATUS**  
TOWN PLANNING - ENDORSEMENT

**JOB N°** 17020  
**REVISION N°** D  
**DATE** 21.12.2020  
**SCALE** 1:100 @A0  
**DRAWN BY** BM  
**CHECKED BY** DC

**DRAWING TITLE**  
PROPOSED LEVEL 02 PLAN

**LEGEND**  
VCAT HEARING PLANS  
REV D DATED 13.05.2019

ADVERTISED COPY - CITY OF MONASH  
 This copied document is made available for the sole purpose of enabling its consideration and review as part of a planning process under the Planning and Environment Act.  
 The document must not be used for any purpose which may breach copyright.



**CS-A**  
 Cera Stribley Architects  
 Cera Stribley Pty. Ltd.  
 ABN 29 350 585 700  
 + 61 3 9533 2582  
 info@cs-a.com.au  
 www.cs-a.com.au  
 Studio 4, 249 Chapel St  
 Prahran VIC 3181 AUS

**NOTES**  
 Do not scale. Contractor must verify all dimensions on site before commencing any work or preparing shop drawings which must be approved by the architect before manufacture.  
 Any extra detailed work shown on this drawing must be claimed and approved before proceeding.

**COPYRIGHT**  
 Reproduction of the whole or part of the document constitutes an infringement of copyright.  
 The information, ideas and concepts contained in this document is / are confidential. The responsibility of this document is / are prohibited from disclosing such information, ideas and concepts to any person without prior written consent of the copyright holder.

REV DATE	REVISION	BY	CHK	REV DATE	REVISION	BY	CHK
A	12.12.18 Town Planning RFI	KH	DC				
B	24.05.19 WITHOUT PREJUDICE	KH	DC				
D	18.06.19 VCAT - FINAL HEARING	KH	DC				

**PROJECT**  
 554-556 HIGH STREET ROAD  
 554-556 HIGH STREET ROAD, MOUNT WAVERLEY  
 OVER 55'S RESIDENTIAL DEVELOPMENT

**DRAWING STATUS**  
 TOWN PLANNING - ENDORSEMENT

**JOB N°** 17020  
**REVISION N°** D  
**DATE** 21.12.2020  
**SCALE** 1:100 @A0  
**DRAWN BY** BM  
**CHECKED BY** DC

**DRAWING TITLE**  
 PROPOSED LEVEL 03 PLAN

**LEGEND**  
 VCAT HEARING PLANS  
 REV D DATED 13.05.2019

**REV DATE** 21.12.2020  
**REVISION** D  
**BY** BM  
**CHK** DC

**PROJECT**  
 554-556 HIGH STREET ROAD  
 554-556 HIGH STREET ROAD, MOUNT WAVERLEY  
 OVER 55'S RESIDENTIAL DEVELOPMENT

**DRAWING STATUS**  
 TOWN PLANNING - ENDORSEMENT

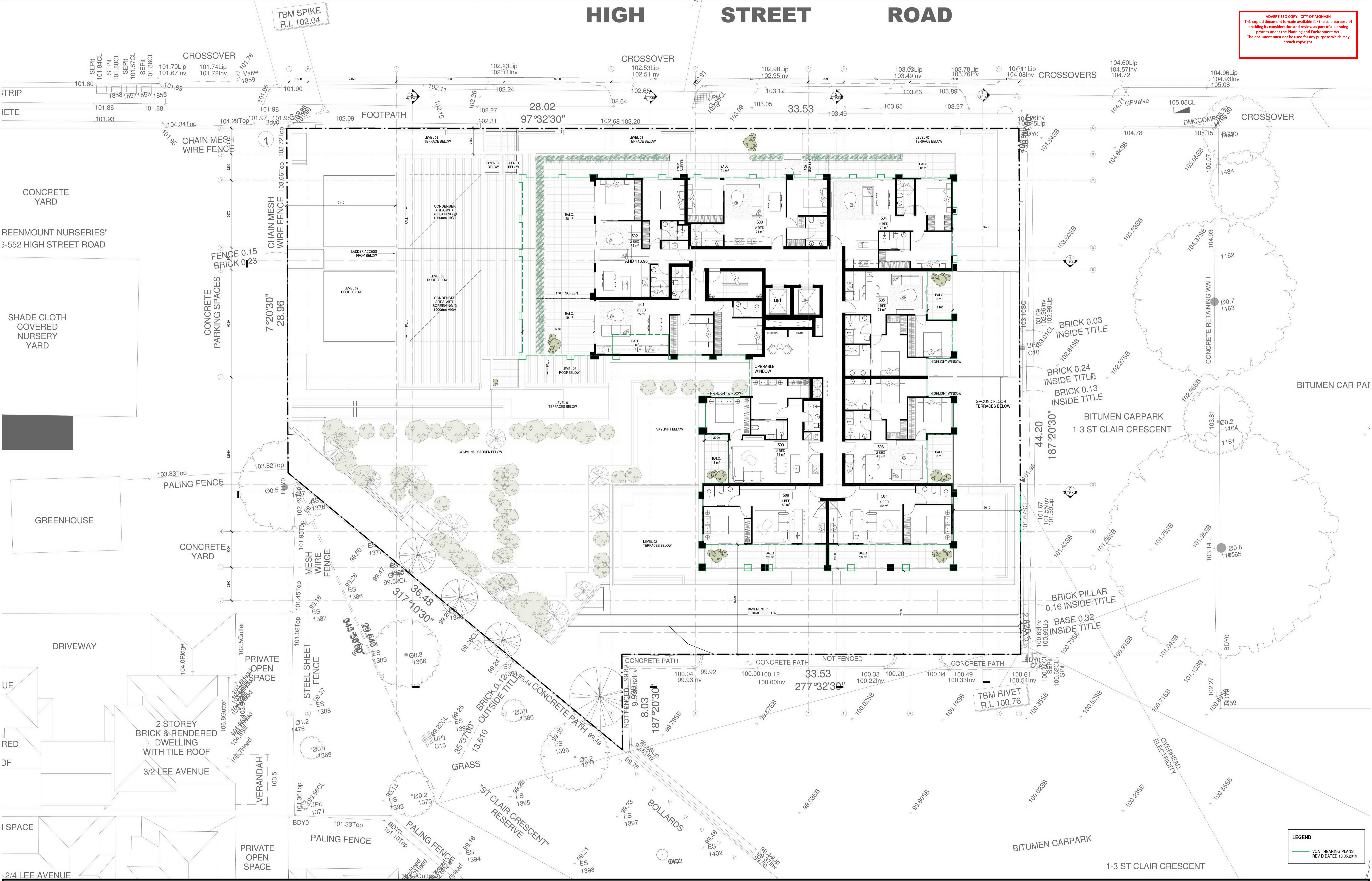
**JOB N°** 17020  
**REVISION N°** D  
**DATE** 21.12.2020  
**SCALE** 1:100 @A0  
**DRAWN BY** BM  
**CHECKED BY** DC

**DRAWING TITLE**  
 PROPOSED LEVEL 03 PLAN



# HIGH STREET ROAD

ADVERTISED COPY - CITY OF MONASH  
This copied document is made available for the sole purpose of enabling its consideration and review as part of a planning process under the Planning and Environment Act. The document must not be used for any purpose which may breach copyright.



**CS-A**  
Cera Stribley Architects  
Cera Stribley Pty. Ltd.  
ABN 29 350 585 700  
+ 61 3 9533 2582  
www.cs-a.com.au  
Info@cs-a.com.au  
Studio 4, 249 Chapel St  
Prahran VIC 3181 AUS

**NOTES**  
Do not scale. Contractor must verify all dimensions on site before commencing any work or preparing shop drawings which must be approved by the architect before manufacture.  
Any extra detailed work shown on this drawing must be claimed and approved before proceeding.

**COPYRIGHT**  
Reproduction of the whole or part of this document constitutes an infringement of copyright. The information, ideas and concepts contained in this document is / are confidential. The responsibility of this document is / are provided from disclosing such information, ideas and concepts to any person without prior written consent of the copyright holder.

REV DATE	REVISION	BY	CHK	REV DATE	REVISION	BY	CHK
A	12.12.18 Town Planning RFI	KH	DC				
B	24.05.19 WITHOUT PREJUDICE	KH	DC				
D	18.06.19 VCAT - FINAL HEARING	KH	DC				

**PROJECT**  
554-556 HIGH STREET ROAD  
554-556 HIGH STREET ROAD, MOUNT WAVERLEY  
OVER 55'S RESIDENTIAL DEVELOPMENT

**DRAWING STATUS**  
TOWN PLANNING - ENDORSEMENT

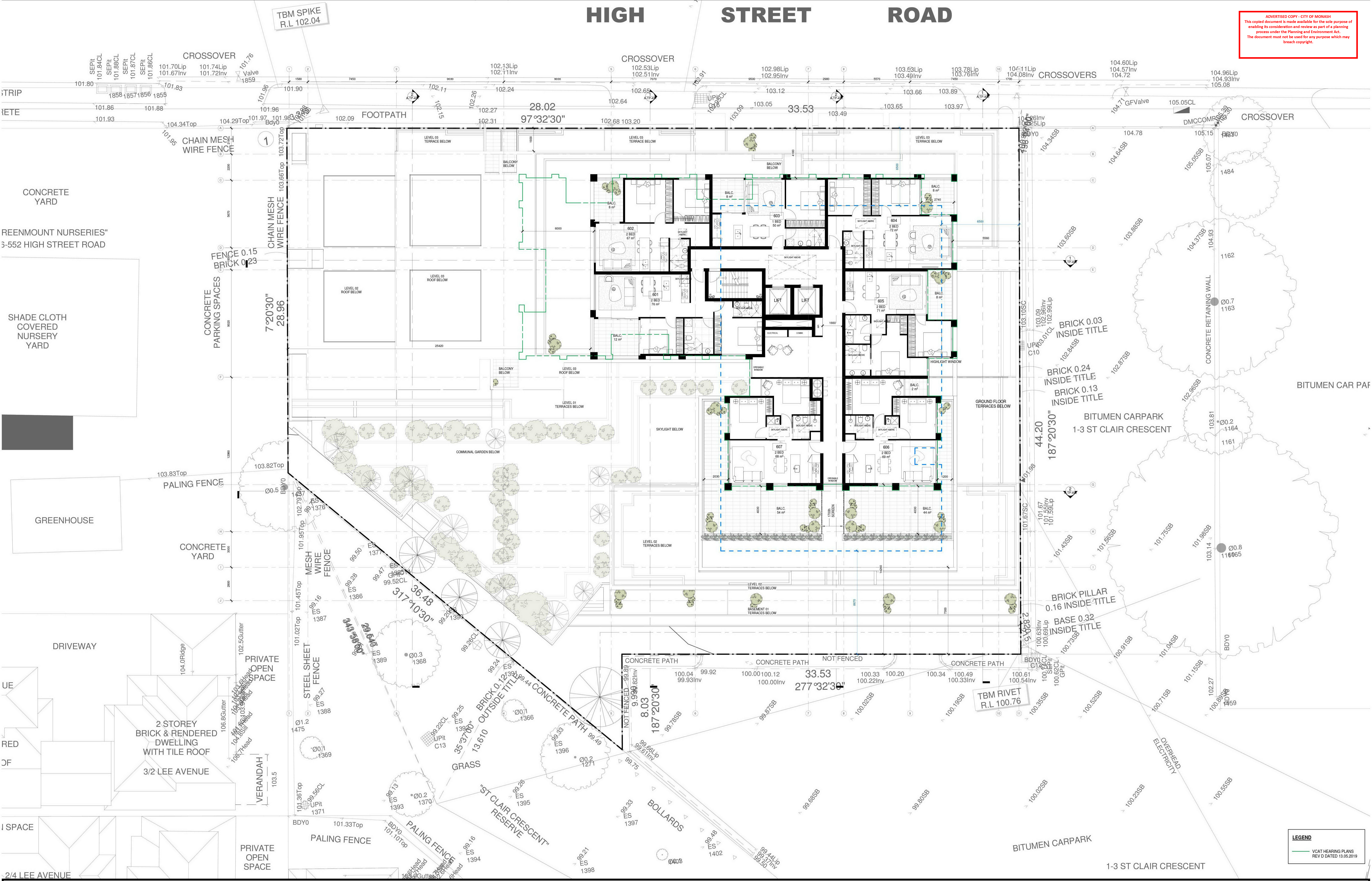
**JOB N°** 17020  
**REVISION N°** D  
**DATE** 21.12.2020  
**SCALE** 1:100 @A0  
**DRAWN BY** BM  
**CHECKED BY** DC

**DRAWING TITLE**  
PROPOSED LEVEL 04 PLAN

**LEGEND**  
VCAT HEARING PLANS  
REV D DATED 13.05.2019

**A-TP-109**

ADVERTISED COPY - CITY OF MONASH  
 This copied document is made available for the sole purpose of enabling its consideration and review as part of a planning process under the Planning and Environment Act.  
 The document must not be used for any purpose which may breach copyright.



**CS-A**  
 Cera Stribley Architects  
 Cera Stribley Pty. Ltd.  
 ABN 29 350 585 700  
 + 61 3 9533 2582  
 info@cs-a.com.au  
 www.cs-a.com.au  
 Studio 4, 249 Chapel St  
 Prahran VIC 3181 AUS

**NOTES**  
 Do not scale. Contractor must verify all dimensions on site before commencing any work or preparing shop drawings which must be approved by the architect before manufacture.  
 Any extra detailed work shown on this drawing must be claimed and approved before proceeding.

**COPYRIGHT**  
 Reproduction of the whole or part of the document constitutes an infringement of copyright.  
 The information, ideas and concepts contained in this document is / are confidential. The responsibility of this document is / are prohibited from disclosing such information, ideas and concepts to any person without prior written consent of the copyright holder.

REV DATE	REVISION	BY	CHK	REV DATE	REVISION	BY	CHK
A	12.12.18 Town Planning RFI	KH	DC				
B	24.08.19 WITHOUT PREJUDICE	KH	DC				
D	18.06.19 VCAT - FINAL HEARING	KH	DC				

**PROJECT**  
 554-556 HIGH STREET ROAD  
 554-556 HIGH STREET ROAD, MOUNT WAVERLEY  
 OVER 55'S RESIDENTIAL DEVELOPMENT

**DRAWING STATUS**  
 TOWN PLANNING - ENDORSEMENT

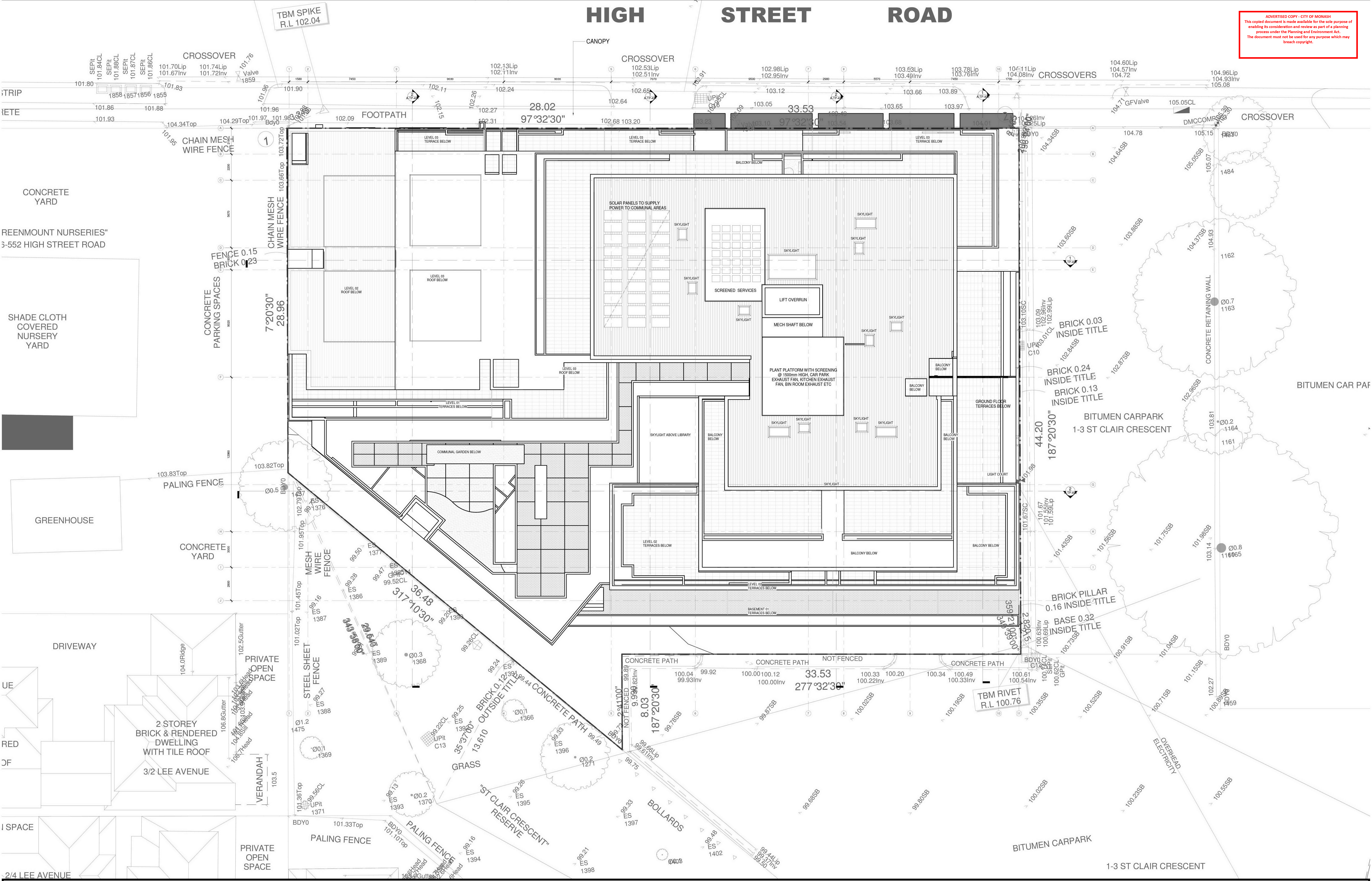
**JOB N°** 17020  
**REVISION N°** D  
**DATE** 21.12.2020  
**SCALE** 1:100 @A0  
**DRAWN BY** BM  
**CHECKED BY** DC

**DRAWING TITLE**  
 PROPOSED LEVEL 05 PLAN

**A-TP-110**

**LEGEND**  
 VCAT HEARING PLANS  
 REV D DATED 13.05.2019

ADVERTISED COPY - CITY OF MONASH  
 This copied document is made available for the sole purpose of enabling its consideration and review as part of a planning process under the Planning and Environment Act.  
 The document must not be used for any purpose which may breach copyright.



**CS-A**  
 Cera Stribley Architects  
 Cera Stribley Pty. Ltd.  
 ABN 29 350 585 700  
 + 61 3 9533 2582  
 info@cs-a.com.au  
 www.cs-a.com.au  
 Studio 4, 249 Chapel St  
 Prahran VIC 3181 AUS

**NOTES**  
 Do not scale. Contractor must verify all dimensions on site before commencing any work or preparing shop drawings which must be approved by the architect before manufacture.  
 Any extra detailed work shown on this drawing must be ordered and approved before proceeding.

**COPYRIGHT**  
 Reproduction of the whole or part of the document constitutes an infringement of copyright.  
 The information, ideas and concepts contained in this document is / are confidential. The recipient(s) of this document is / are prohibited from disclosing such information, ideas and concepts to any person without prior written consent of the copyright holder.

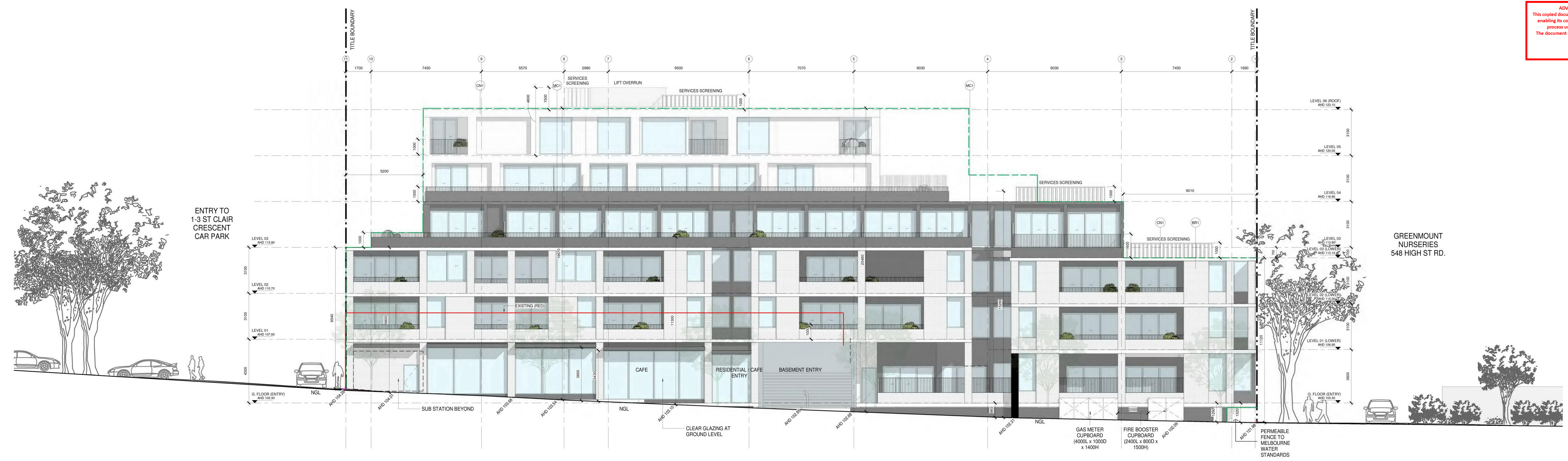
REV	DATE	REVISION	BY	CHK	REV	DATE	REVISION	BY	CHK
A	12.12.18	Town Planning RFI	KH	DC					
B	24.08.19	WITHOUT PREJUDICE	KH	DC					
D	18.06.19	VCAT - FINAL HEARING	KH	DC					

**PROJECT**  
 554-556 HIGH STREET ROAD  
 554-556 HIGH STREET ROAD, MOUNT WAVERLEY  
 OVER 55'S RESIDENTIAL DEVELOPMENT

**DRAWING STATUS**  
 TOWN PLANNING - ENDORSEMENT

**JOB N°** 17020  
**REVISION N°** D  
**DATE** 21.12.2020  
**SCALE** 1:100 @A0  
**DRAWN BY** BM  
**CHECKED BY** DC  
**DRAWING TITLE** PROPOSED ROOF PLAN  
**A-TP-111**

ADVERTISED COPY - CITY OF MONASH  
 This copied document is made available for the sole purpose of enabling its consideration and review as part of a planning process under the Planning and Environment Act. The document must not be used for any purpose which may breach copyright.



1 NORTH ELEVATION  
 1 : 100



2 EAST ELEVATION  
 1 : 100

**ELEVATION KEY**  
 EXISTING CONDITIONS - - - - -  
 VCAT HEARING PLANS REV D DATED 13.05.2019 - - - - -

**MATERIAL LEGEND**  
 BR1 - BRICK VENEER  
 CN1 - CONCRETE FINISH  
 CN2 - CONCRETE FINISH  
 MC1 - METAL CLADDING  
 SB - STEEL BALUSTRADE  
 AL - ALUMINIUM FRAME  
 RE - RENDER FINISH

**NOTE:**  
 REFER FINISHES SCHEDULE FOR DETAILED MATERIAL SELECTION

**CS-A**  
 Cera Stribley Architects  
 Cera Stribley Pty. Ltd.  
 ABN 29 350 585 700  
 + 61 3 9533 2582  
 info@cs-a.com.au  
 www.cs-a.com.au  
 Studio 4, 249 Chapel St  
 Prahran VIC 3181 AUS

**NOTES**  
 Do not scale. Contractor must verify all dimensions on site before commencing any work or preparing shop drawings which must be approved by the architect before manufacture. Any extra detailed work shown on this drawing must be claimed and approved before proceeding.

**COPYRIGHT**  
 Reproduction of the whole or part of the document constitutes an infringement of copyright. The information, ideas and concepts contained in this document is / are confidential. The recipient(s) of this document is / are prohibited from disclosing such information, ideas and concepts to any person without prior written consent of the copyright holder.

REV	DATE	REVISION	BY	CHK	REV	DATE	REVISION	BY	CHK
A	12.12.18	Town Planning RFI	KH	DC					
B	24.05.19	WITHOUT PREJUDICE	KH	DC					
D	18.06.19	VCAT - FINAL HEARING	KH	DC					

**PROJECT**  
 554-556 HIGH STREET ROAD  
 554-556 HIGH STREET ROAD, MOUNT WAVERLEY  
 OVER 55'S RESIDENTIAL DEVELOPMENT

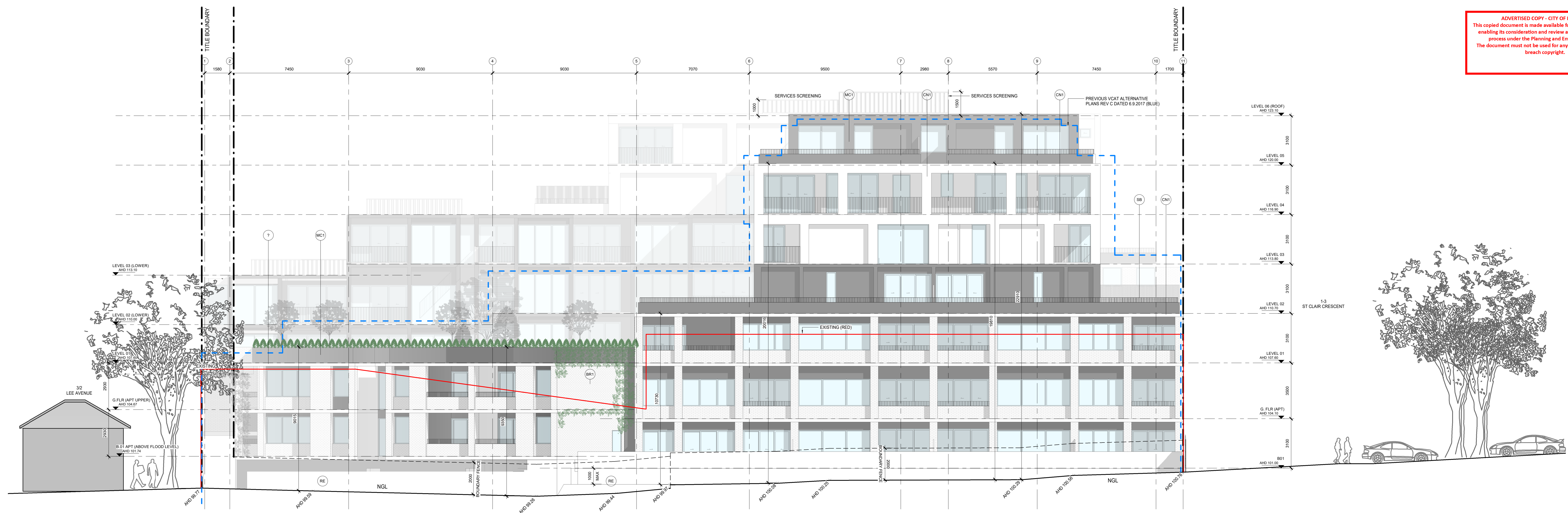
**DRAWING STATUS**  
 TOWN PLANNING - ENDORSEMENT

**JOB N°** 17020  
**REVISION N°** D  
**DATE** 21.12.2020  
**SCALE** 1:100 @A0  
**DRAWN BY** BM  
**CHECKED BY** DC

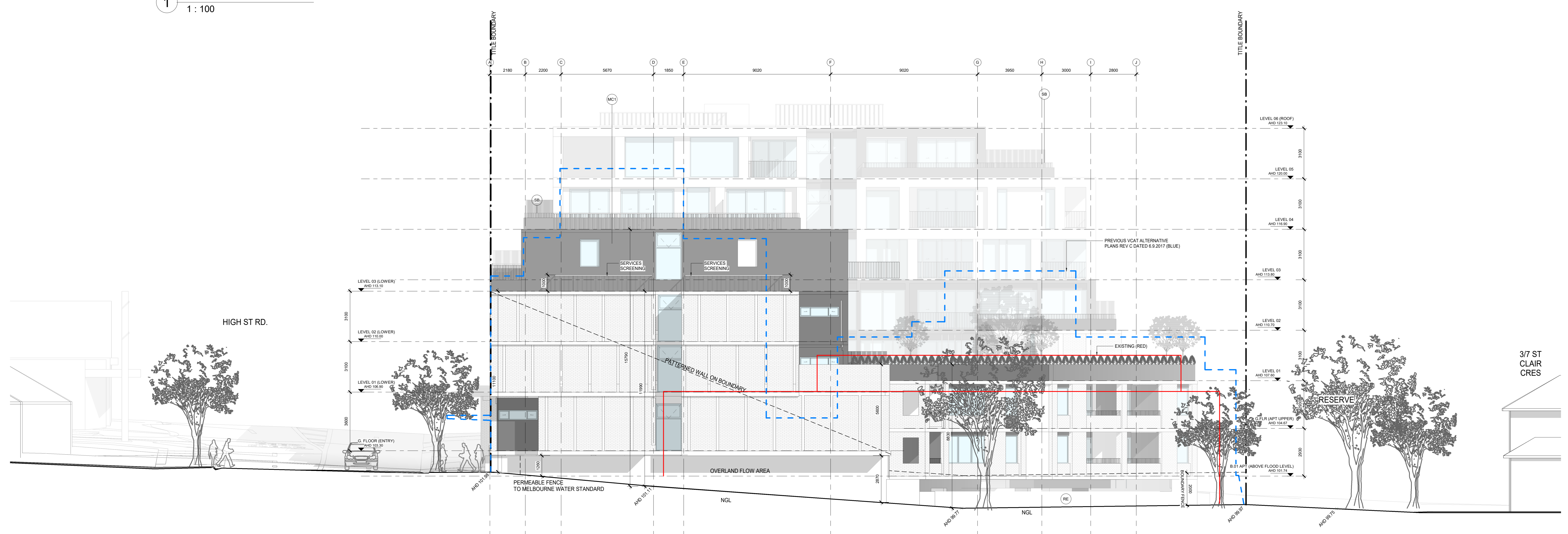
**DRAWING TITLE**  
 PROPOSED ELEVATION - 01

A-TP-300

ADVERTISED COPY - CITY OF MONASH  
 This copied document is made available for the sole purpose of enabling its consideration and review as part of a planning process under the Planning and Environment Act. The document must not be used for any purpose which may breach copyright.



1 SOUTH ELEVATION  
 1:100



2 WEST ELEVATION  
 1:100

- ELEVATION KEY**
- EXISTING CONDITIONS - - - - -
  - RFI PLANS REV A DATED 12.12.2018 - - - - -
  - VCAT ALTERNATIVE PLANS REV C DATED 06.09.2017 - - - - -
- MATERIAL LEGEND**
- BR1 - BRICK VENEER
  - CN1 - CONCRETE FINISH
  - CN2 - CONCRETE FINISH
  - MC1 - METAL CLADDING
  - SB - STEEL BALUSTRADE
  - AL - ALUMINIUM FRAME
  - RE - RENDER FINISH
- NOTE**  
 REFER FINISHES SCHEDULE FOR DETAILED MATERIAL SELECTION

**CS-A**  
 Cera Stribley Architects  
 Cera Stribley Pty. Ltd.  
 ABN 29 350 585 700  
 + 61 3 9533 2582  
 info@cs-a.com.au  
 www.cs-a.com.au  
 Studio 4, 249 Chapel St  
 Prahran VIC 3181 AUS

**NOTES**  
 Do not scale. Contractor must verify all dimensions on site before commencing any work or preparing shop drawings which must be approved by the architect before manufacture. Any extra detailed work shown on this drawing must be claimed and approved before proceeding.

**COPYRIGHT**  
 Reproduction of the whole or part of this document constitutes an infringement of copyright. The information, ideas and concepts contained in this document are / are confidential. The recipient(s) of this document(s) are prohibited from disclosing such information, ideas and concepts to any person without prior written consent of the copyright holder.

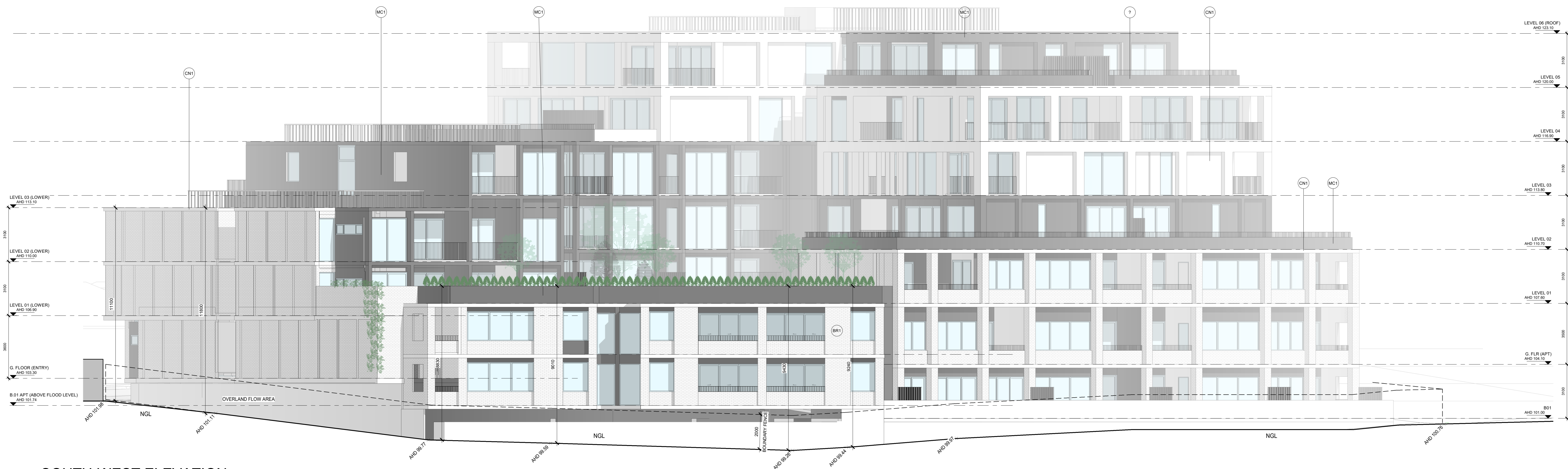
REV DATE	REVISION	BY	CHK	REV DATE	REVISION	BY	CHK
A	12.12.18 Town Planning RFI	KH	DC				
B	24.05.19 WITHOUT PREJUDICE	KH	DC				
D	18.06.19 VCAT - FINAL HEARING	KH	DC				

**PROJECT**  
 554-556 HIGH STREET ROAD  
 554-556 HIGH STREET ROAD, MOUNT WAVERLEY  
 OVER S5'S RESIDENTIAL DEVELOPMENT

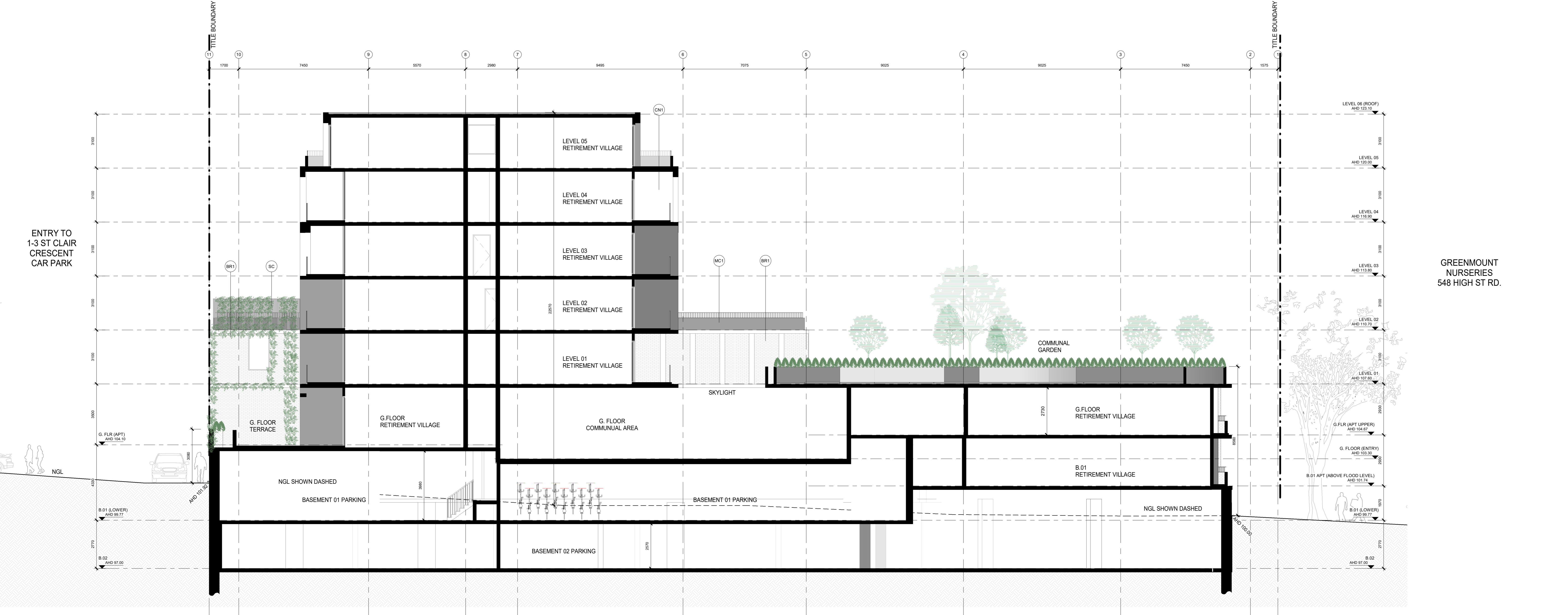
**DRAWING STATUS**  
 VCAT - FINAL HEARING

**JOB N°** 17020  
**REVISION N°** D  
**DATE** 15/05/2019  
**SCALE** 1:100 @A0  
**DRAWN BY** BM  
**CHECKED BY** DC  
**DRAWING TITLE** PROPOSED ELEVATION - 02  
**A-TP-301**

ADVERTISED COPY - CITY OF MONASH  
 This copied document is made available for the sole purpose of enabling its consideration and review as part of a planning process under the Planning and Environment Act. The document must not be used for any purpose which may breach copyright.



1 SOUTH-WEST ELEVATION  
 1 : 100



2 NORTH INTERNAL  
 1 : 100

ELEVATION KEY	
EXISTING CONDITIONS	---
RFI PLANS REV A DATED 12.12.2019	---
VCAT ALTERNATIVE PLANS REV C DATED 05.09.2017	---
MATERIAL LEGEND	
BR1 - BRICK VENEER	
CN1 - CONCRETE FINISH	
CN2 - CONCRETE FINISH	
MC1 - METAL CLADDING	
SB - STEEL BALUSTRADE	
AL - ALUMINIUM FRAME	
RE - RENDER FINISH	
<b>NOTE:</b> REFER FINISHES SCHEDULE FOR DETAILED MATERIAL SELECTION	

**CS-A**  
 Cera Stribley Architects  
 Cera Stribley Pty. Ltd.  
 ABN 29 350 585 700  
 + 61 3 9533 2582  
 info@cs-a.com.au  
 www.cs-a.com.au  
 Studio 4, 249 Chapel St  
 Prahran VIC 3181 AUS

**NOTES**  
 Do not scale. Contractor must verify all dimensions on site before commencing any work or preparing shop drawings which must be approved by the architect before manufacture. Any extra detailed work shown on this drawing must be claimed and approved before proceeding.

**COPYRIGHT**  
 Reproduction of the whole or part of the document constitutes an infringement of copyright. The information, ideas and concepts contained in this document is / are confidential. The responsibility of this document is / are prohibited from disclosing such information, ideas and concepts to any person without prior written consent of the copyright holder.

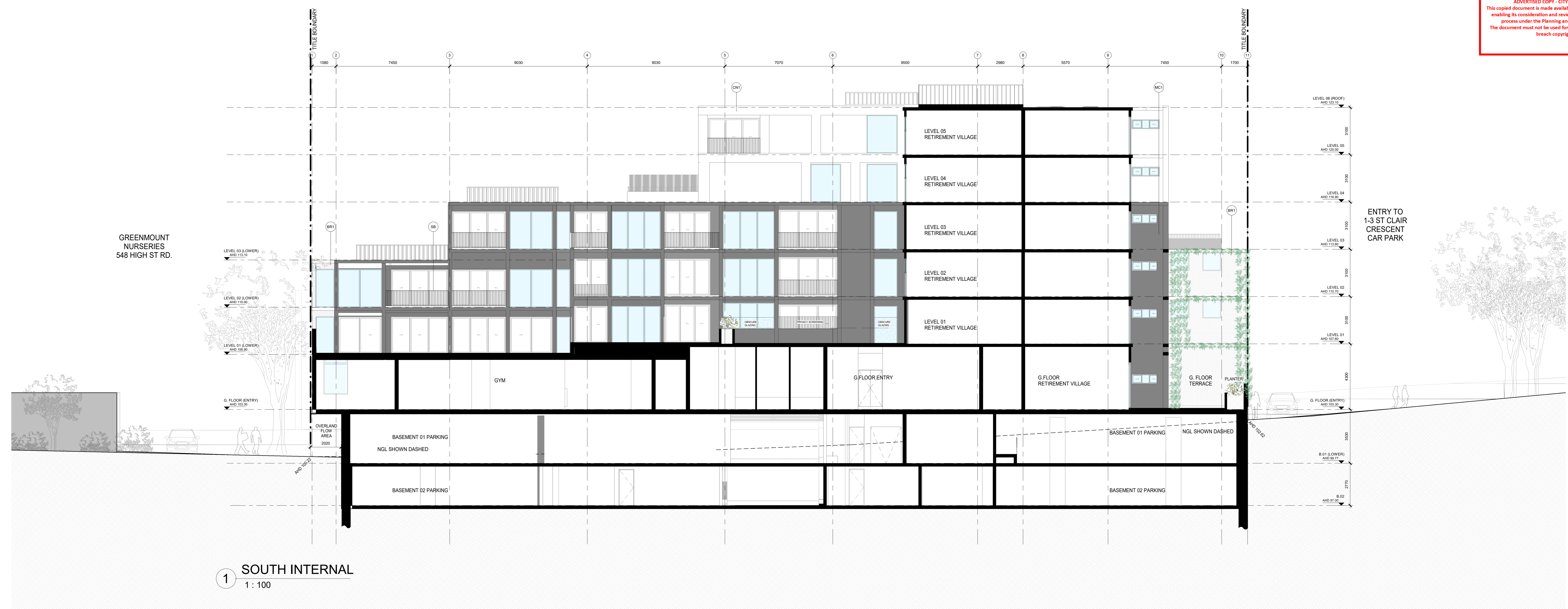
REV DATE	REVISION	BY	CHK	REV DATE	REVISION	BY	CHK
A	12.12.18 Town Planning RFI	KH	DC				
B	24.05.19 WITHOUT PREJUDICE	KH	DC				
D	18.06.19 VCAT - FINAL HEARING	KH	DC				

**PROJECT**  
 554-556 HIGH STREET ROAD  
 554-556 HIGH STREET ROAD, MOUNT WAVERLEY  
 OVER 55'S RESIDENTIAL DEVELOPMENT

**DRAWING STATUS**  
 VCAT - FINAL HEARING

**JOB N°** 17020  
**REVISION N°** D  
**DATE** 13/05/2019  
**SCALE** 1:100 @A0  
**DRAWN BY** BM  
**CHECKED BY** DC  
**DRAWING TITLE**  
 PROPOSED ELEVATION - 03  
**A-TP-302**

ADVERTISED COPY - CITY OF MONASH  
 This copied document is made available for the sole purpose of enabling its consideration and review as part of a planning process under the Planning and Environment Act. The document must not be used for any purpose which may breach copyright.



1 SOUTH INTERNAL  
 1 : 100

ELEVATION KEY	
EXISTING CONDITIONS	---
RFI PLANS REV A DATED 12.12.2016	---
VCAT ALTERNATIVE PLANS REV C DATED 06.09.2017	---
MATERIAL LEGEND	
BR1 - BRICK VENEER	
CN1 - CONCRETE FINISH	
CN2 - CONCRETE FINISH	
MC1 - METAL CLADDING	
SB - STEEL BALUSTRADE	
AL - ALUMINIUM FRAME	
RE - RENDER FINISH	
<b>NOTE:</b> REFER FINISHES SCHEDULE FOR DETAILED MATERIAL SELECTION	

**CS-A**  
 Cera Stribley Architects  
 Cera Stribley Pty. Ltd.  
 ABN 29 350 585 700  
 + 61 3 9533 2582  
 info@cs-a.com.au  
 www.cs-a.com.au  
 Studio 4, 249 Chapel St  
 Prahran VIC 3181 AUS

**NOTES**  
 Do not scale. Contractor must verify all dimensions on site before commencing any work or preparing shop drawings which must be approved by the architect before manufacture. Any extra entailed work shown on this drawing must be claimed and approved before proceeding.

**COPYRIGHT**  
 Reproduction of the whole or part of the document constitutes an infringement of copyright. The information, ideas and concepts contained in this document is / are confidential. The recipient(s) of this document is / are prohibited from disclosing such information, ideas and concepts to any person without prior written consent of the copyright holder.

REV DATE	REVISION	BY	CHK	REV DATE	REVISION	BY	CHK
A	12.12.16 Town Planning RFI	KH	DC				
B	24.05.19 WITHOUT PREJUDICE	KH	DC				
D	18.06.19 VCAT - FINAL HEARING	KH	DC				

**PROJECT**  
 554-556 HIGH STREET ROAD  
 554-556 HIGH STREET ROAD, MOUNT WAVERLEY  
 OVER 55'S RESIDENTIAL DEVELOPMENT

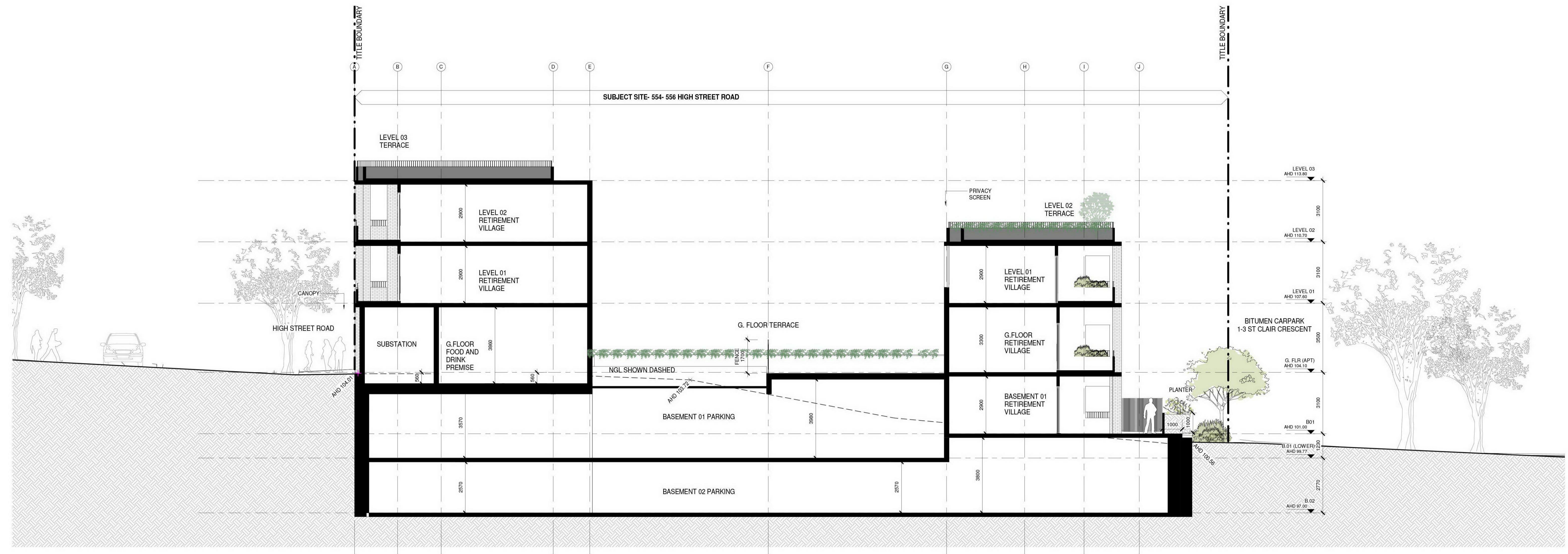
**DRAWING STATUS**  
 VCAT - FINAL HEARING

**JOB N°** 17020  
**REVISION N°** D  
**DATE** 13/05/2019  
**SCALE** 1:100 @A0  
**DRAWN BY** BM  
**CHECKED BY** DC

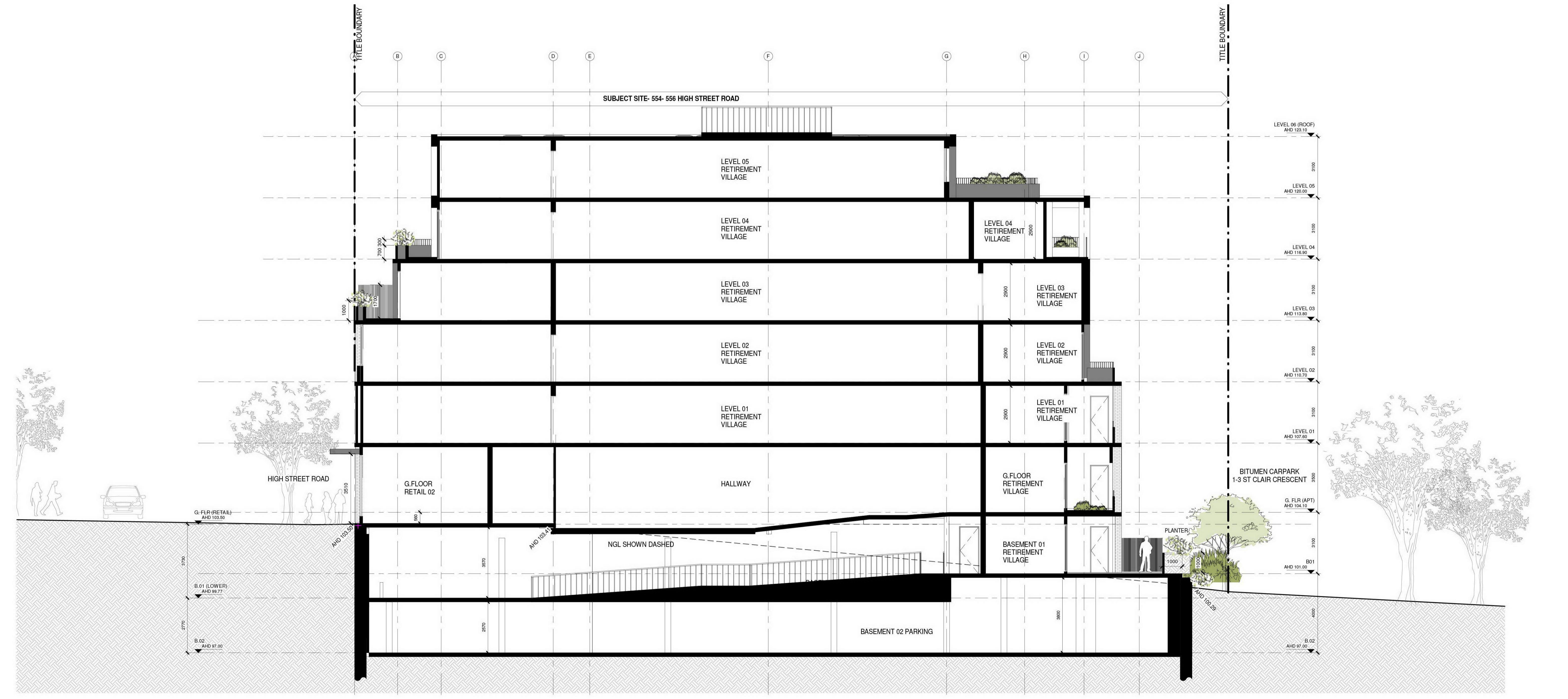
**DRAWING TITLE**  
 PROPOSED ELEVATION - 04

A-TP-304

ADVERTISED COPY - CITY OF MONASH  
 This copied document is made available for the sole purpose of enabling its consideration and review as part of a planning process under the Planning and Environment Act. The document must not be used for any purpose which may breach copyright.



1 SECTION A  
 1 : 100



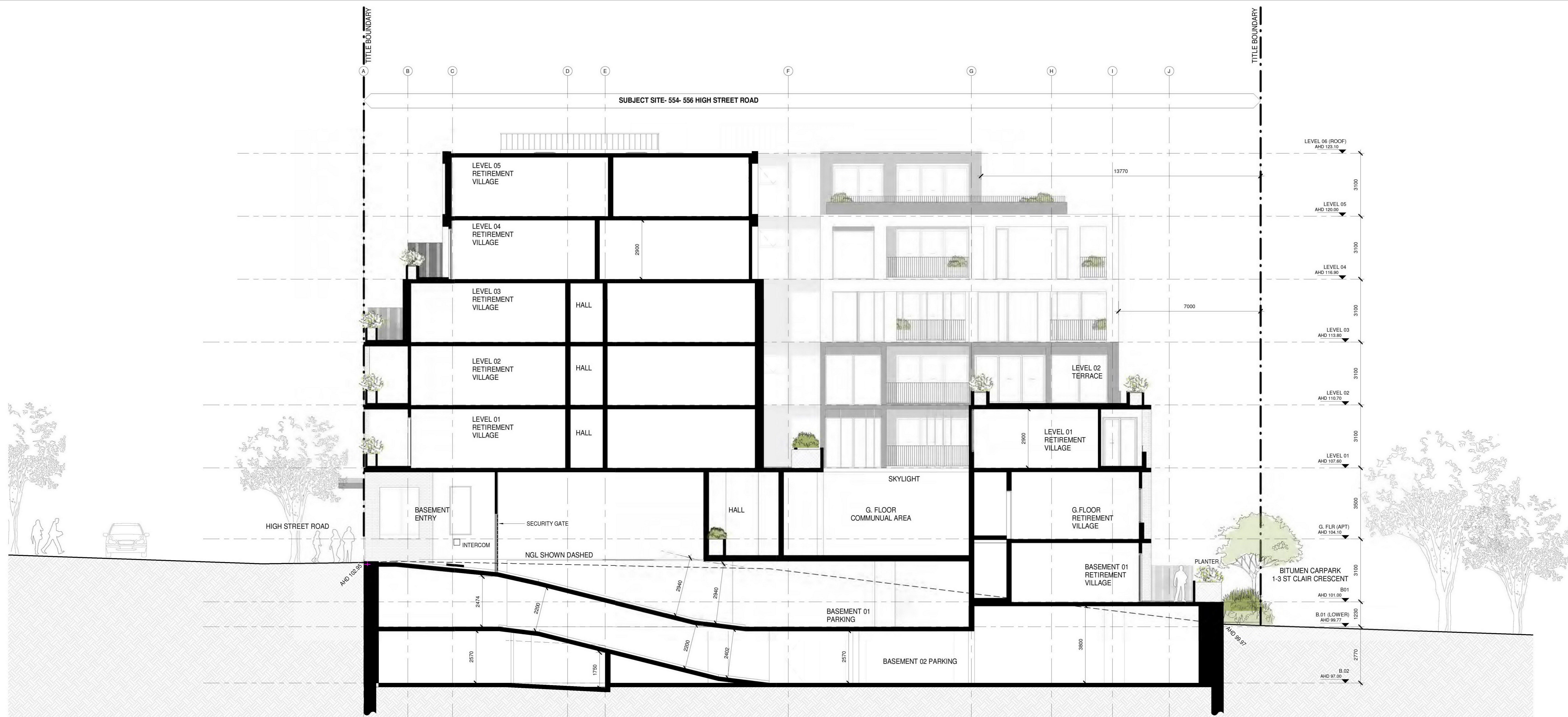
2 SECTION B  
 1 : 100

REV	DATE	REVISION	BY	CHK
A	12.12.18	Town Planning RFI	KH	DC
B	24.08.19	WITHOUT PREJUDICE	KH	DC
D	18.06.19	VCAT - FINAL HEARING	KH	DC

REV	DATE	REVISION	BY	CHK



ADVERTISED COPY - CITY OF MONASH  
 This copied document is made available for the sole purpose of enabling its consideration and review as part of a planning process under the Planning and Environment Act. The document must not be used for any purpose which may breach copyright.



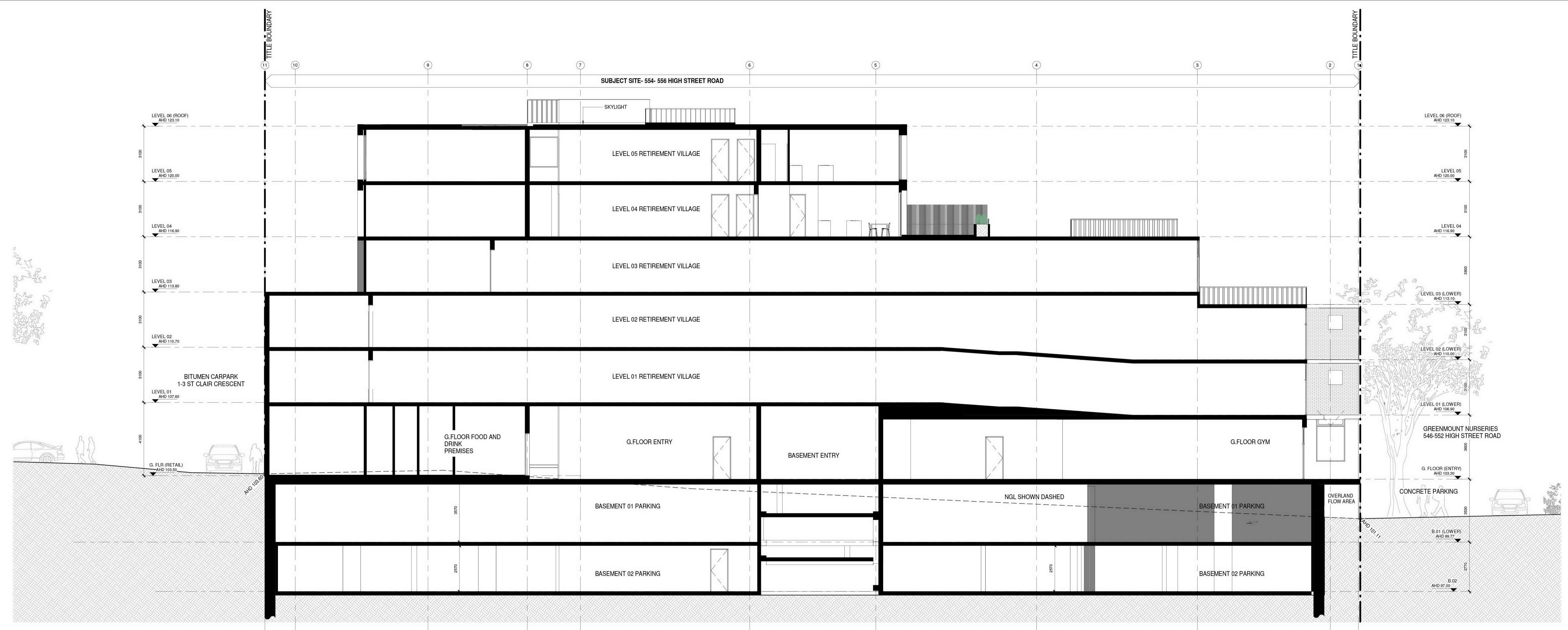
1 SECTION C  
 1 : 100



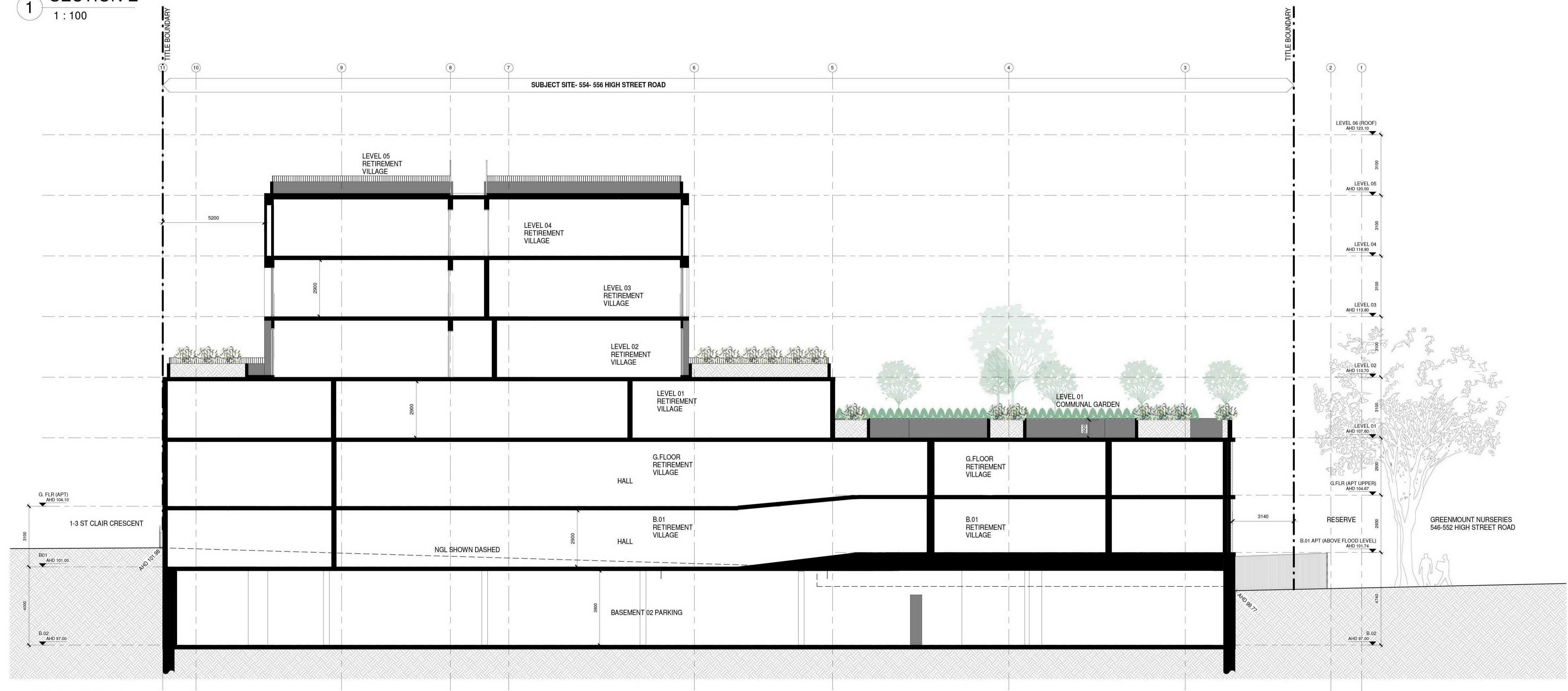
2 SECTION D  
 1 : 100

REV	DATE	REVISION	BY	CHK	REV	DATE	REVISION	BY	CHK
A	12.12.18	Town Planning RFI	KH	DC					
B	24.05.19	WITHOUT PREJUDICE	KH	DC					
D	18.06.19	VCAT - FINAL HEARING	KH	DC					

ADVERTISED COPY - CITY OF MONASH  
 This copied document is made available for the sole purpose of enabling its consideration and review as part of a planning process under the Planning and Environment Act. The document must not be used for any purpose which may breach copyright.



1 SECTION E  
 1 : 100



2 SECTION F  
 1 : 100

**CS-A**  
 Cera Stribley Architects  
 Cera Stribley Pty. Ltd.  
 ABN 29 350 585 700  
 + 61 3 9533 2582  
 info@cs-a.com.au  
 www.cs-a.com.au  
 Studio 4, 249 Chapel St  
 Prahran VIC 3181 AUS

**NOTES**  
 Do not scale. Contractor must verify all dimensions on site before commencing any work or preparing shop drawings which must be approved by the architect before manufacture.  
 Any extra detailed work shown on this drawing must be ordered and approved before proceeding.

**COPYRIGHT**  
 Reproduction of the whole or part of the document constitutes an infringement of copyright. The information, ideas and concepts contained in this document is / are confidential. The recipient of this document is / are prohibited from disclosing such information, ideas and concepts to any person without prior written consent of the copyright holder.

REV DATE	REVISION	BY	CHK	REV DATE	REVISION	BY	CHK
A	12.12.18 Town Planning RFI	KH	DC				
B	24.05.19 WITHOUT PREJUDICE	KH	DC				
D	18.06.19 VCAT - FINAL HEARING	KH	DC				

**PROJECT**  
 554-556 HIGH STREET ROAD  
 554-556 HIGH STREET ROAD, MOUNT WAVERLEY  
 OVER 55'S RESIDENTIAL DEVELOPMENT

**DRAWING STATUS**  
 TOWN PLANNING - ENDORSEMENT

**JOB N°** 17020  
**REVISION N°** D  
**DATE** 21.12.2020  
**SCALE** 1:100 @A0  
**DRAWN BY** BM  
**CHECKED BY** DC  
**DRAWING TITLE**  
 PROPOSED SECTIONS

A-TP-402