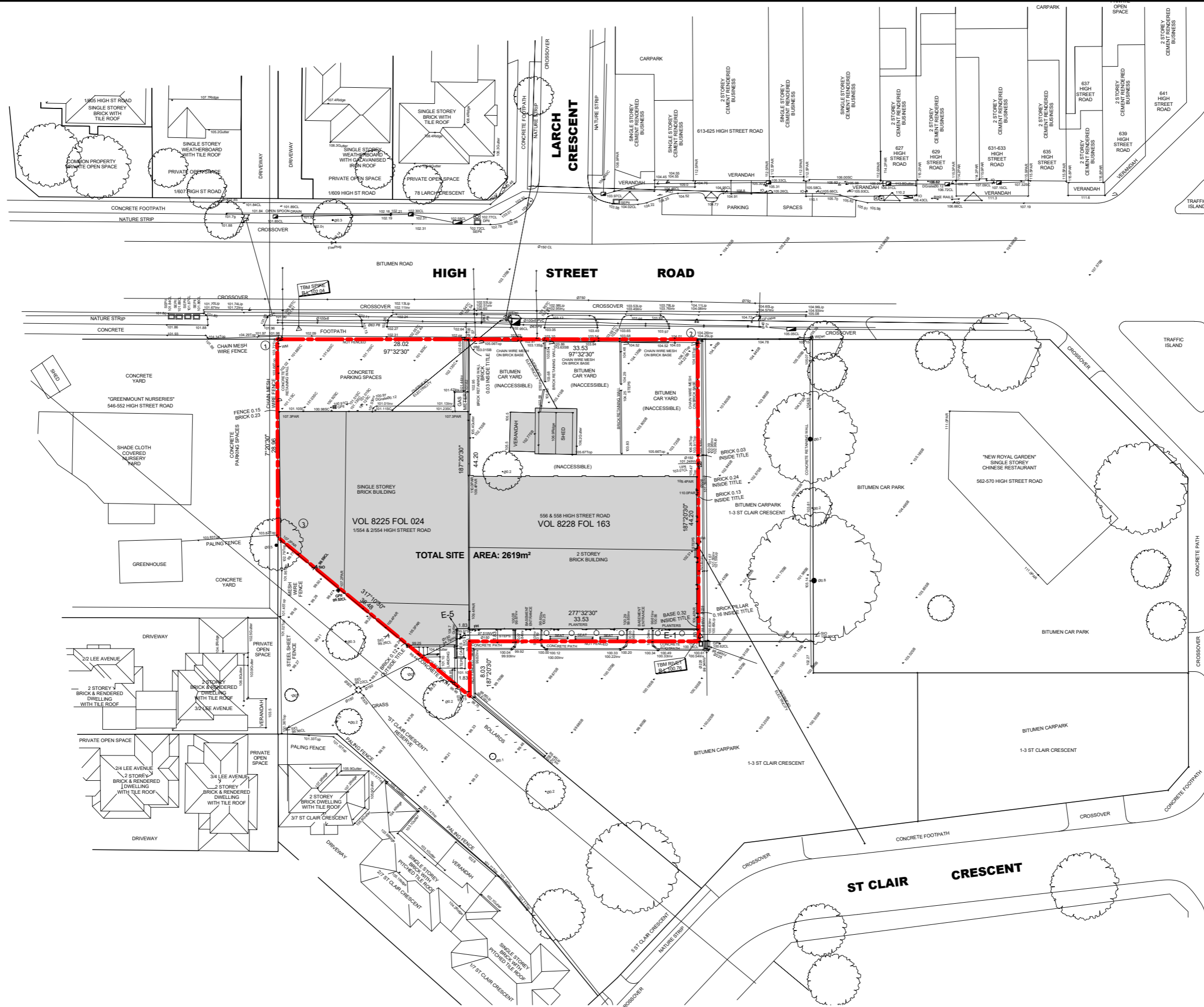


Design Drawings





Cera Stribley Architects
 Cera Stribley Pty. Ltd
 ABN 29 350 585 700
 + 61 3 9533 2582
 info@cs-a.com.au
 www.cs-a.com.au
 Studio 4, 240 Chapel St
 Prahran VIC 3181 AUS

NOTES
 Do not scale. Contractor must verify all dimensions on site before commencing any work or engineering shop drawings which must be approved by the architect before manufacture.
 Any extra entitled work shown on this drawing must be claimed and approved before proceeding.

COPYRIGHT
 Reproduction of the whole or part of the document constitutes an infringement of copyright.
 The information, ideas and concepts contained in this document is/are confidential. The recipient(s) of this document is/are prohibited from disclosing such information, ideas and concepts to any person without prior written consent of the copyright holder.

REV DATE	REVISION	BY	CHK	REV DATE	REVISION	BY	CHK
A	12.12.18 Town Planning RFI	RH	DC				

PROJECT
554-556 HIGH STREET ROAD
 554-556 HIGH STREET ROAD, MOUNT WAVERLEY
 OVER 55'S RESIDENTIAL DEVELOPMENT

DRAWING STATUS
 TOWN PLANNING - RFI

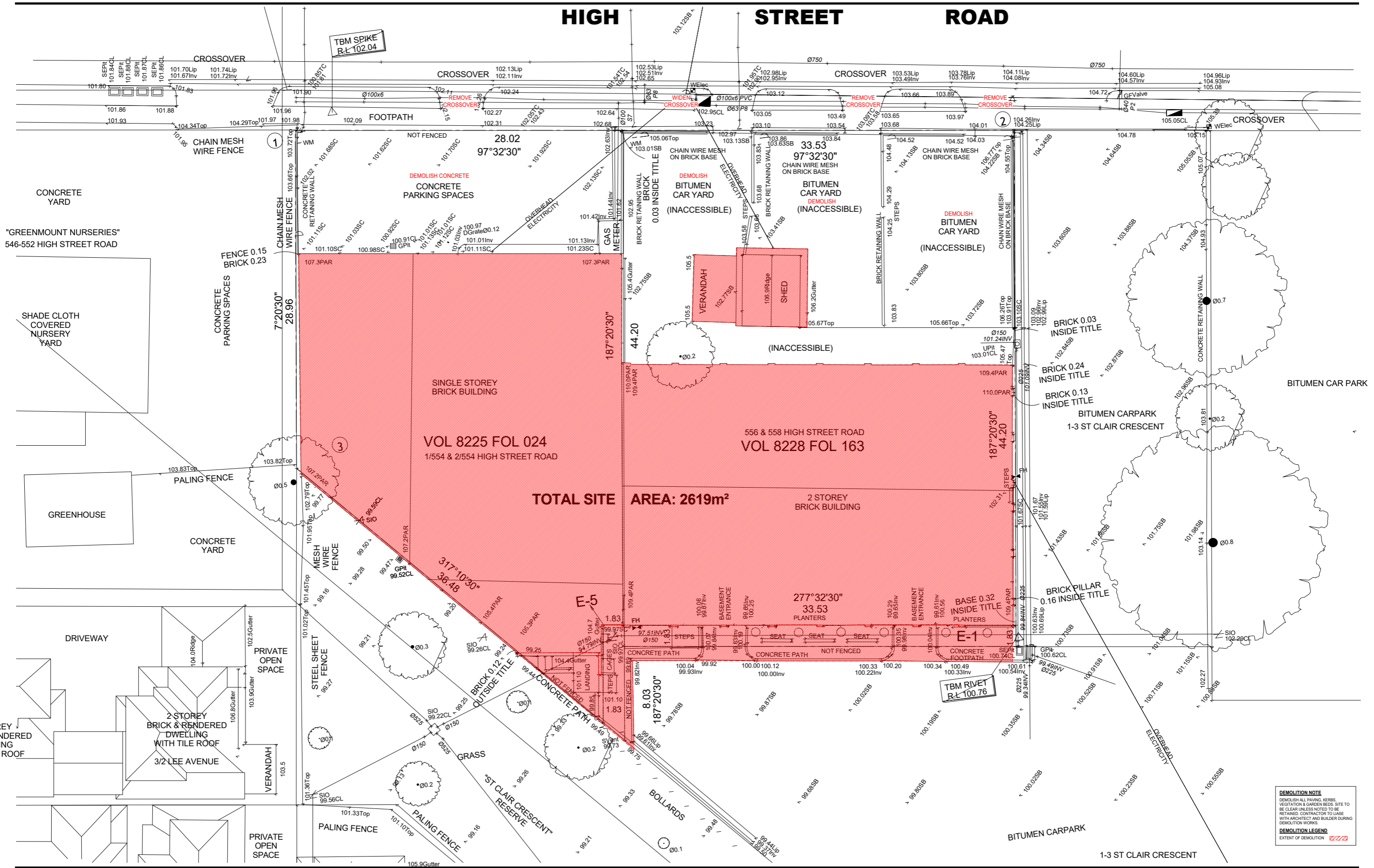
JOB N° 17020
REVISION N° A
DATE 12/12/2018
SCALE 1:200 @ A0
DRAWN BY BM
CHECKED BY DC

DRAWING TITLE
 EXISTING SITE PLAN



A-TP-101

HIGH STREET ROAD



DEMOLITION NOTE
 DEMOLISH ALL PAVING, KERBS, VEGETATION & GARDEN BEDS. SITE TO BE CLEAR UNLESS NOTED TO BE RETAINED. CONTRACTOR TO LIASE WITH ARCHITECT AND BUILDER DURING DEMOLITION WORKS.

DEMOLITION LEGEND
 EXTENT OF DEMOLITION ██████

CS-A
 Cera Stribley Architects
 Cera Stribley Pty. Ltd
 ABN 29 350 985 700
 + 61 3 9533 2582
 info@cs-a.com.au
 www.cs-a.com.au
 Studio 4, 249 Chapel St
 Prahran VIC 3181 AUS

NOTES
 Do not scale. Contractor must verify all dimensions on site before commencing any work or engineering shop drawings which must be approved by the architect before manufacturing. Any state entitled work shown on this drawing must be claimed and approved before proceeding.

COPYRIGHT
 Reproduction of the whole or part of this document constitutes an infringement of copyright. The information, ideas and concepts contained in this document is confidential. The recipient(s) of this document is/are prohibited from disclosing such information, ideas and concepts to any person without prior written consent of the copyright holder.

REV	DATE	REVISION	BY	CHK	REV	DATE	REVISION	BY	CHK
A	12.12.18	Town Planning RFI	RH	DC					

PROJECT
 554-558 HIGH STREET ROAD, MOUNT WAVERLEY
 OVER 55'S RESIDENTIAL DEVELOPMENT

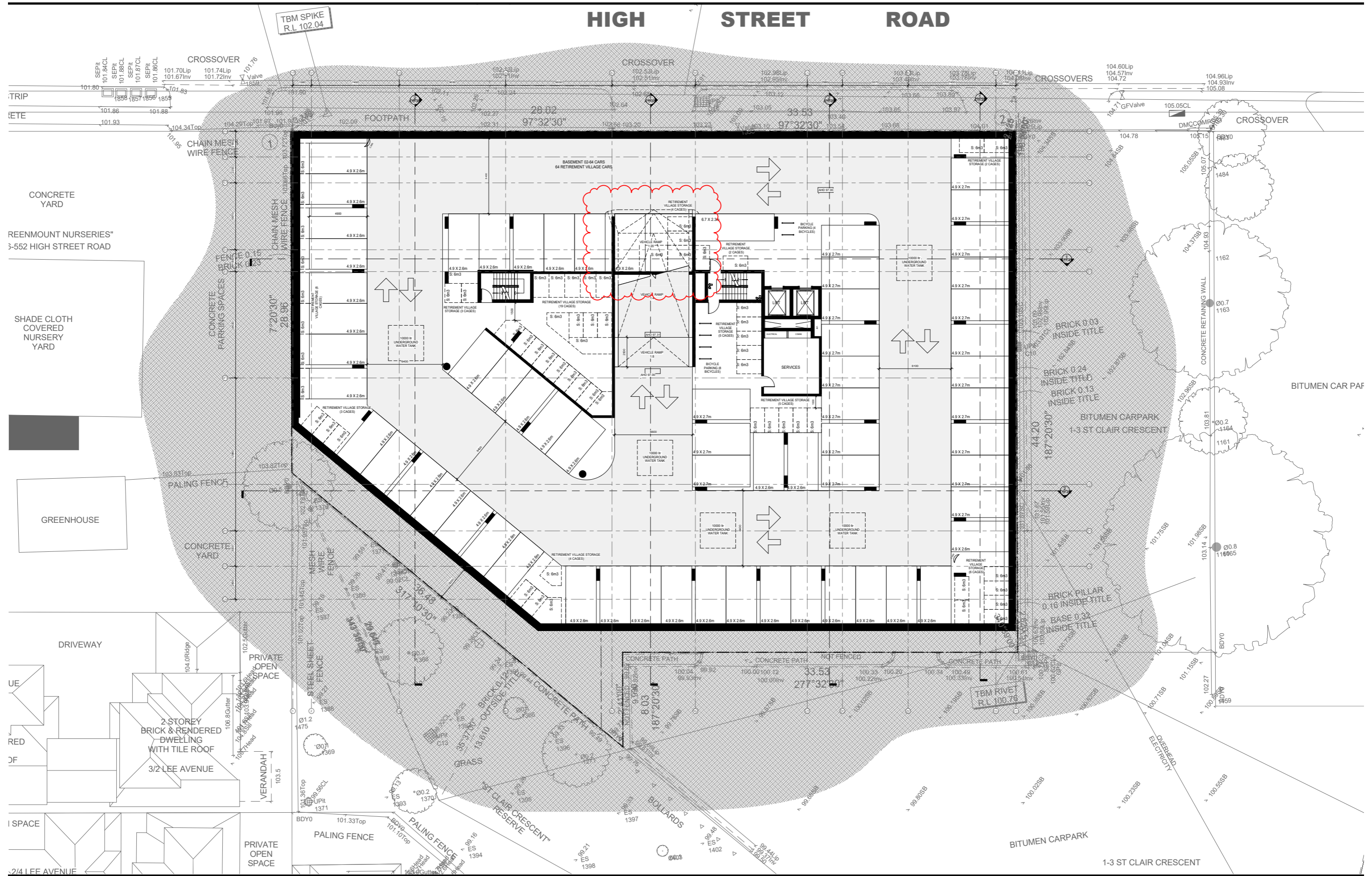
DRAWING STATUS
 TOWN PLANNING - RFI

JOB N° 17020
REVISION N° A
DATE 11/12/2018
SCALE 1:100 @A0
DRAWN BY BM
CHECKED BY DC

DRAWING TITLE
 DEMOLITION PLAN

A-TP-102

HIGH STREET ROAD



CS - A
 Cera Stribley Architects
 Cera Stribley Pty. Ltd
 ABN 29 350 355 700
 + 61 3 9533 2582
 info@cs-a.com.au
 www.cs-a.com.au
 Studio 4, 240 Chapel St
 Prahran VIC 3181 AUS

NOTES
 Do not scale. Contractor must verify all dimensions on site before commencing any work or engineering shop drawings which must be approved by the architect before manufacture.
 Any state related work shown on this drawing must be claimed and approved before proceeding.
COPYRIGHT
 Reproduction of the whole or part of this document constitutes an infringement of copyright.
 The information, ideas and concepts contained in this document are confidential. The recipient(s) of this document is/are prohibited from disclosing such information, ideas and concepts to any person without prior written consent of the copyright holder.

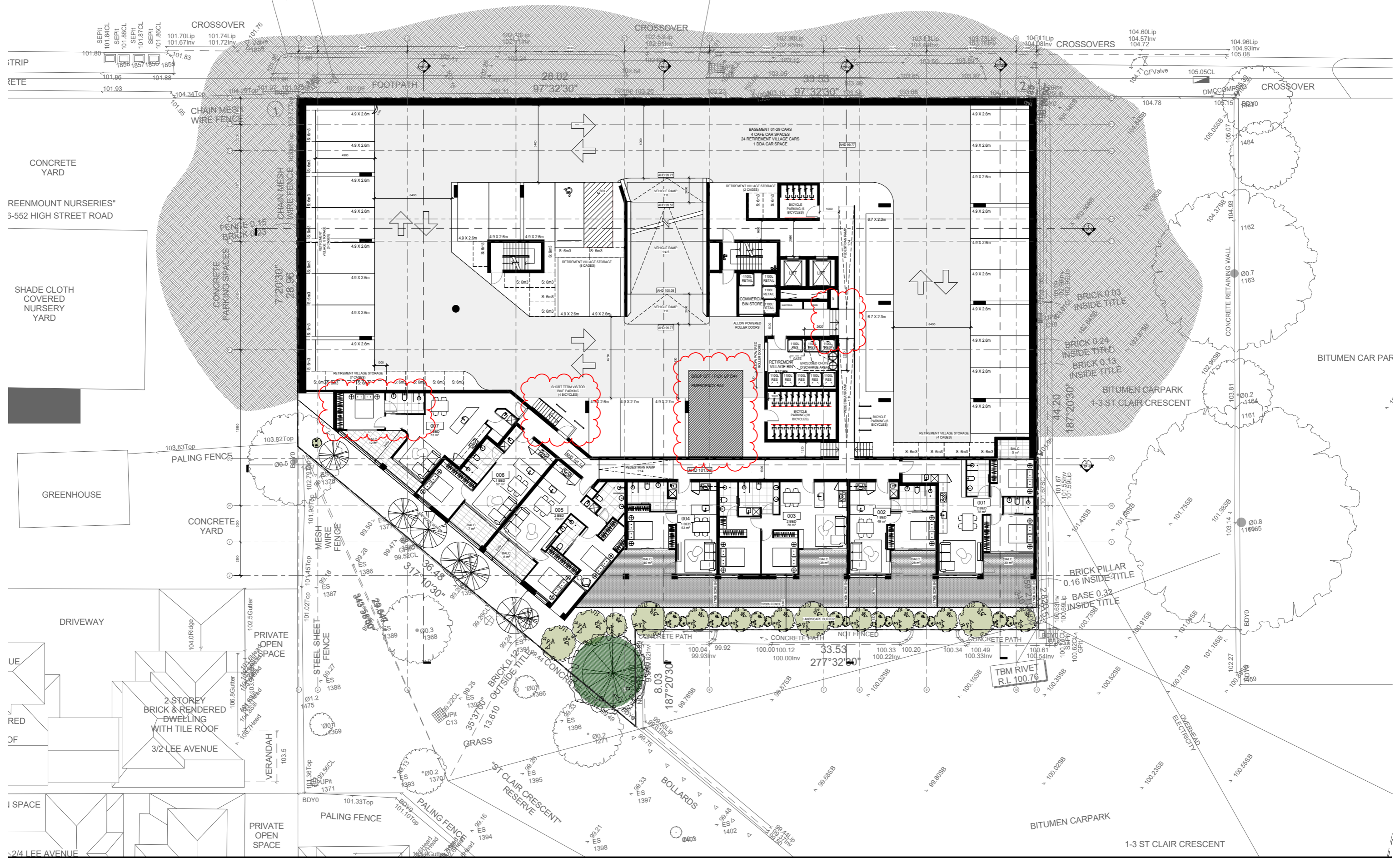
REV	DATE	REVISION	BY	CHK	REV	DATE	REVISION	BY	CHK
A	12.12.18	Town Planning RFI	RH	DC					

PROJECT
 554-556 HIGH STREET ROAD
 554-556 HIGH STREET ROAD, MOUNT WAVERLEY
 OVER 55'S RESIDENTIAL DEVELOPMENT
DRAWING STATUS
 TOWN PLANNING - RFI

JOB N° 17020
REVISION N° A
DATE 12/12/2018
SCALE 1:100 @A0
DRAWN BY BM
CHECKED BY DC
DRAWING TITLE
 PROPOSED BASEMENT 02 PLAN

A-TP-103

HIGH STREET ROAD



NOTES
 Do not scale. Contractor must verify all dimensions on site before commencing any work or engineering shop drawings which must be approved by the architect before manufacture.
 Any state entitled work shown on this drawing must be claimed and approved before proceeding.

COPYRIGHT
 Reproduction of the whole or part of the document constitutes an infringement of copyright. The information, ideas and concepts contained in this document are confidential. The recipient(s) of this document are prohibited from disclosing such information, ideas and concepts to any person without prior written consent of the copyright holder.

REV DATE	REVISION	BY	CHK	REV DATE	REVISION	BY	CHK
A	12.12.18 Town Planning RFI	RH	DC				

PROJECT
 554-556 HIGH STREET ROAD
 554-556 HIGH STREET ROAD, MOUNT WAVERLEY
 OVER 55'S RESIDENTIAL DEVELOPMENT

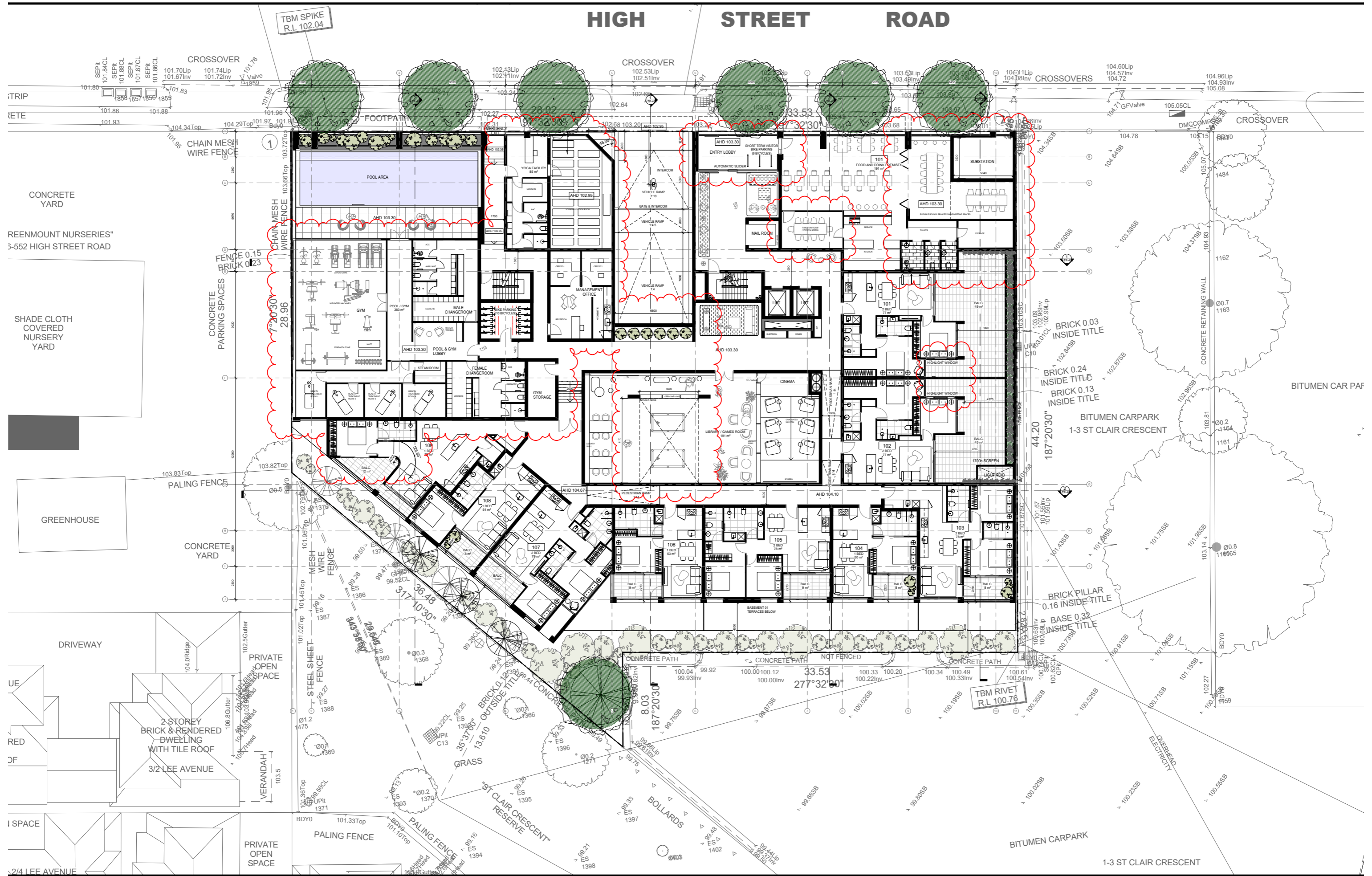
DRAWING STATUS
 TOWN PLANNING - RFI

JOB N° 17020
REVISION N° A
DATE 12/12/2018
SCALE 1:100 @A0
DRAWN BY BM
CHECKED BY DC

DRAWING TITLE
 PROPOSED BASEMENT 01 PLAN

A-TP-104

HIGH STREET ROAD



CS-A
 Cera Stribley Architects
 Cera Stribley Pty. Ltd
 ABN 29 350 355 700
 + 61 3 9533 2582
 info@cs-a.com.au
 www.cs-a.com.au
 Studio 4, 249 Chapel St
 Prahran VIC 3181 AUS

NOTES
 Do not scale. Contractor must verify all dimensions on site before commencing any work or engineering shop drawings which must be approved by the architect before manufacture.
 Any estate related work shown on this drawing must be claimed and approved before proceeding.

COPYRIGHT
 Reproduction of the whole or part of the document constitutes an infringement of copyright. The information, ideas and concepts contained in this document is confidential. The responsibility of this document is prohibited from disclosing such information, ideas and concepts to any person without prior written consent of the copyright holder.

REV	DATE	REVISION	BY	CHK	REV	DATE	REVISION	BY	CHK
A	12.12.18	Town Planning RFI	RH	DC					

PROJECT
 554-556 HIGH STREET ROAD
 554-556 HIGH STREET ROAD, MOUNT WAVERLEY
 OVER 55'S RESIDENTIAL DEVELOPMENT

DRAWING STATUS
 TOWN PLANNING - RFI

JOB N° 17020
REVISION N° A
DATE 12/12/2018
SCALE 1:100 @A0
DRAWN BY SM
CHECKED BY DC

DRAWING TITLE
 PROPOSED GROUND PLAN

HIGH STREET ROAD



CS-A
 Cera Stribley Architects
 Cera Stribley Pty. Ltd
 ABN 29 350 385 700
 +61 3 9533 2582
 info@cs-a.com.au
 www.cs-a.com.au
 Studio 4, 249 Chapel St
 Prahran VIC 3181 AUS

NOTES
 Do not scale. Contractor must verify all dimensions on site before commencing any work or engineering shop drawings which must be approved by the architect before manufacture. Any extra entitled work shown on this drawing must be claimed and approved before proceeding.

COPYRIGHT
 Reproduction of the whole or part of the document constitutes an infringement of copyright. The information, ideas and concepts contained in this document is confidential. The recipient(s) of this document is/are prohibited from disclosing such information, ideas and concepts to any person without prior written consent of the copyright holder.

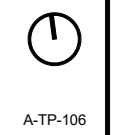
REV	DATE	REVISION	BY	CHK	REV	DATE	REVISION	BY	CHK
A	12.12.18	Town Planning RFI	RH	DC					

PROJECT
 554-556 HIGH STREET ROAD
 554-556 HIGH STREET ROAD, MOUNT WAVERLEY
 OVER 55'S RESIDENTIAL DEVELOPMENT

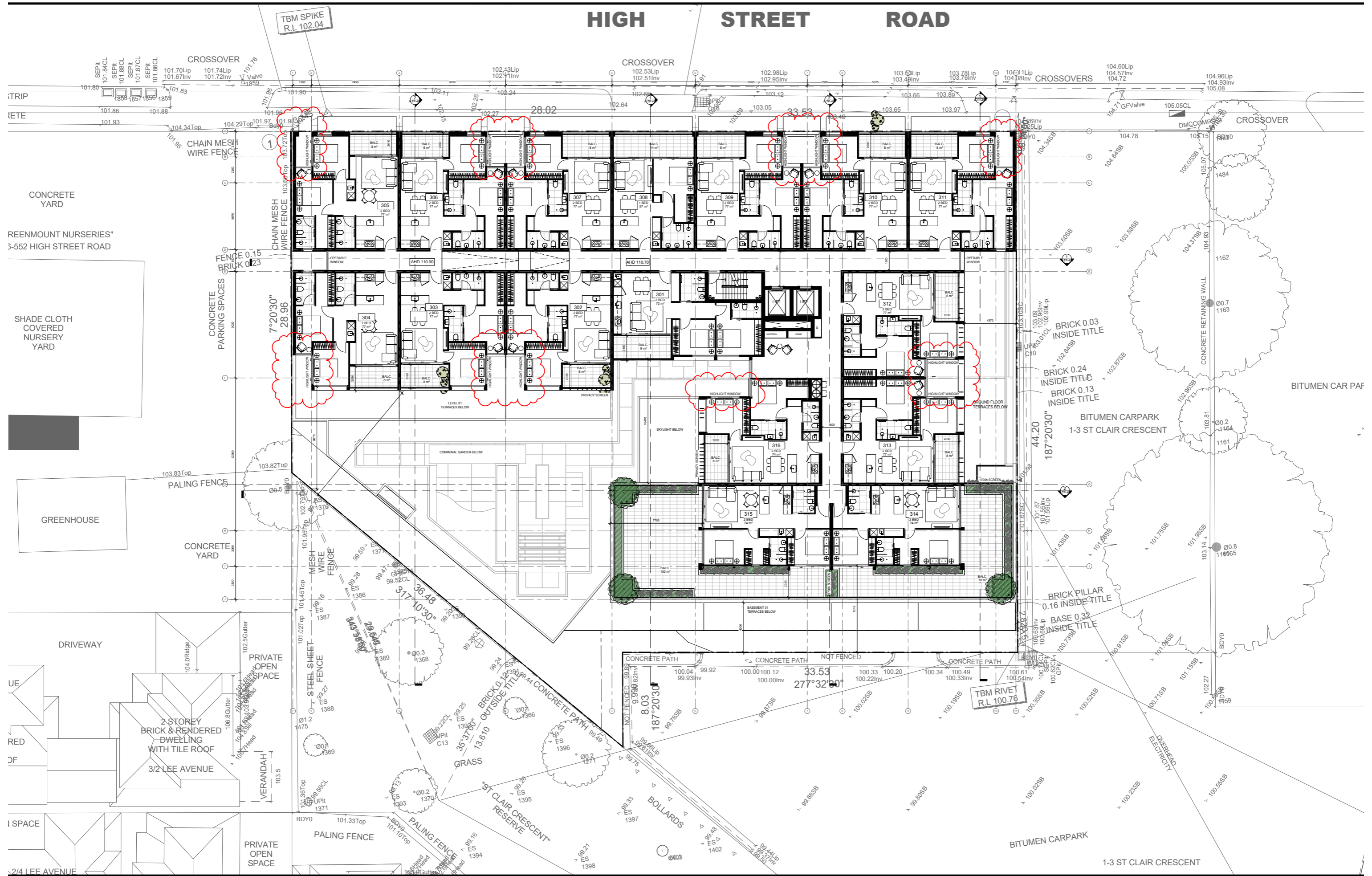
DRAWING STATUS
 TOWN PLANNING - RFI

JOB N° 17020
REVISION N° A
DATE 12/12/2018
SCALE 1:100 @A0
DRAWN BY BM
CHECKED BY DC

DRAWING TITLE
 PROPOSED LEVEL 01 PLAN



HIGH STREET ROAD



Cera Stribley Architects
 Cera Stribley Pty. Ltd
 ABN 29 350 985 700
 + 61 3 9533 2582
 info@cs-a.com.au
 www.cs-a.com.au
 Studio 4, 240 Chapel St
 Prahran VIC 3181 AUS

NOTES
 Do not scale. Contractor must verify all dimensions on site before commencing any work or engineering shop drawings which must be approved by the architect before manufacture.
 Any state entitled work shown on this drawing must be claimed and approved before proceeding.

COPYRIGHT
 Reproduction of the whole or part of the document constitutes an infringement of copyright.
 The information, ideas and concepts contained in this document is confidential. The recipient(s) of this document is/are prohibited from disclosing such information, ideas and concepts to any person without prior written consent of the copyright holder.

REV	DATE	REVISION	BY	CHK
A	12.12.18	Town Planning RFI	RH	DC

REV	DATE	REVISION	BY	CHK

REV	DATE	REVISION	BY	CHK

REV	DATE	REVISION	BY	CHK

PROJECT
554-556 HIGH STREET ROAD
 554-556 HIGH STREET ROAD, MOUNT WAVERLEY
 OVER 55'S RESIDENTIAL DEVELOPMENT

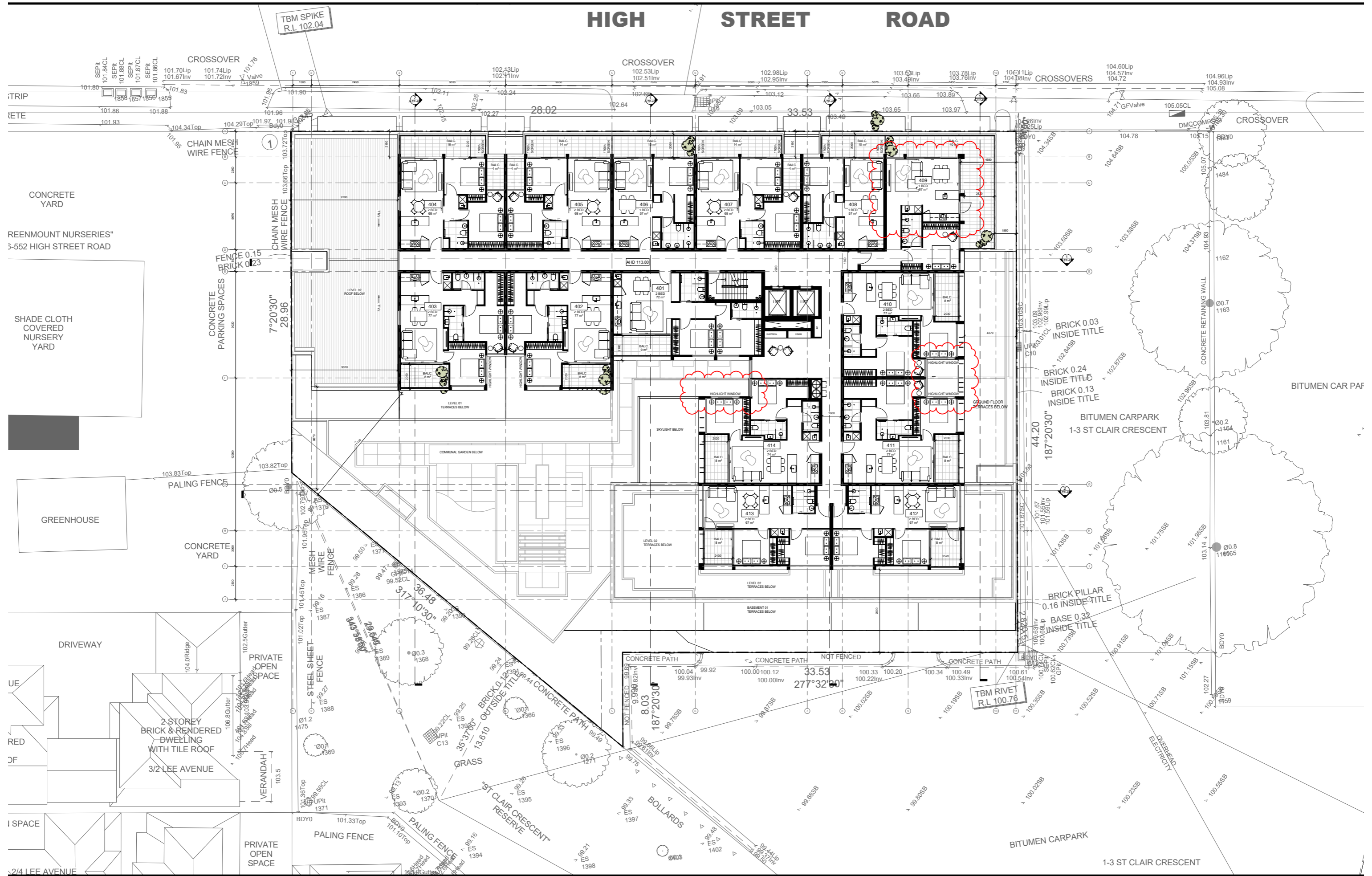
DRAWING STATUS
 TOWN PLANNING - RFI

JOB N° 17020
 REVISION N° A
 DATE 12/12/2018
 SCALE 1:100 @A0
 DRAWN BY BM
 CHECKED BY DC

DRAWING TITLE
 PROPOSED LEVEL 02 PLAN

A-TP-107

HIGH STREET ROAD



CS-A
 Cera Stribley Architects
 Cera Stribley Pty. Ltd.
 ABN 29 350 985 700
 + 61 3 9533 2582
 info@cs-a.com.au
 www.cs-a.com.au
 Studio 4, 249 Chapel St
 Prahran VIC 3181 AUS

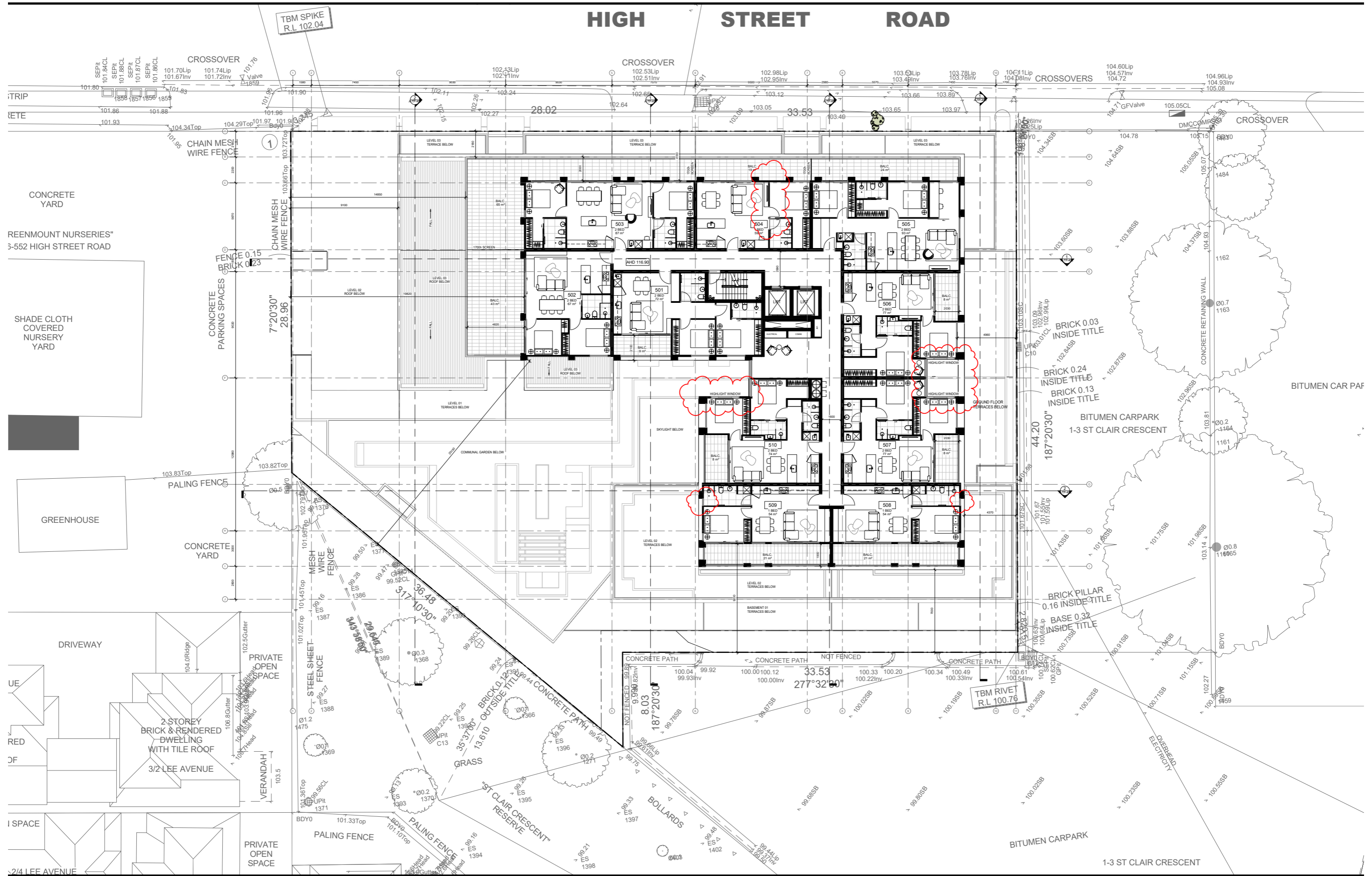
NOTES
 Do not scale. Contractor must verify all dimensions on site before commencing any work or engineering shop drawings which must be approved by the architect before manufacture.
 Any extra entitled work shown on this drawing must be claimed and approved before proceeding.
COPYRIGHT
 Reproduction of the whole or part of this document constitutes an infringement of copyright. The information, ideas and concepts contained in this document are confidential. The responsibility of this document is prohibited from disclosing such information, ideas and concepts to any person without prior written consent of the copyright holder.

REV	DATE	REVISION	BY	CHK	REV	DATE	REVISION	BY	CHK
A	12.12.18	Town Planning RFI	RH	DC					

PROJECT
 554-556 HIGH STREET ROAD
 554-556 HIGH STREET ROAD, MOUNT WAVERLEY
 OVER 55'S RESIDENTIAL DEVELOPMENT
DRAWING STATUS
 TOWN PLANNING - RFI

JOB N° 17020
REVISION N° A
DATE 12/12/2018
SCALE 1:100 @A0
DRAWN BY BM
CHECKED BY DC
DRAWING TITLE
 PROPOSED LEVEL 03 PLAN

HIGH STREET ROAD



CS-A
 Cera Stribley Architects
 Cera Stribley Pty. Ltd.
 ABN 29 350 385 700
 +61 3 9533 2582
 info@cs-a.com.au
 www.cs-a.com.au
 Studio 4, 240 Chapel St
 Prahran VIC 3181 AUS

NOTES
 Do not scale. Contractor must verify all dimensions on site before commencing any work or engineering shop drawings which must be approved by the architect before manufacture.
 Any state entitled work shown on this drawing must be claimed and approved before proceeding.

COPYRIGHT
 Reproduction of the whole or part of the document constitutes an infringement of copyright. The information, ideas and concepts contained in this document is confidential. The recipient(s) of this document is/are prohibited from disclosing such information, ideas and concepts to any person without prior written consent of the copyright holder.

REV	DATE	REVISION	BY	CHK	REV	DATE	REVISION	BY	CHK
A	12.12.18	Town Planning RFI	RH	DC					

PROJECT
 554-556 HIGH STREET ROAD
 554-556 HIGH STREET ROAD, MOUNT WAVERLEY
 OVER 55'S RESIDENTIAL DEVELOPMENT

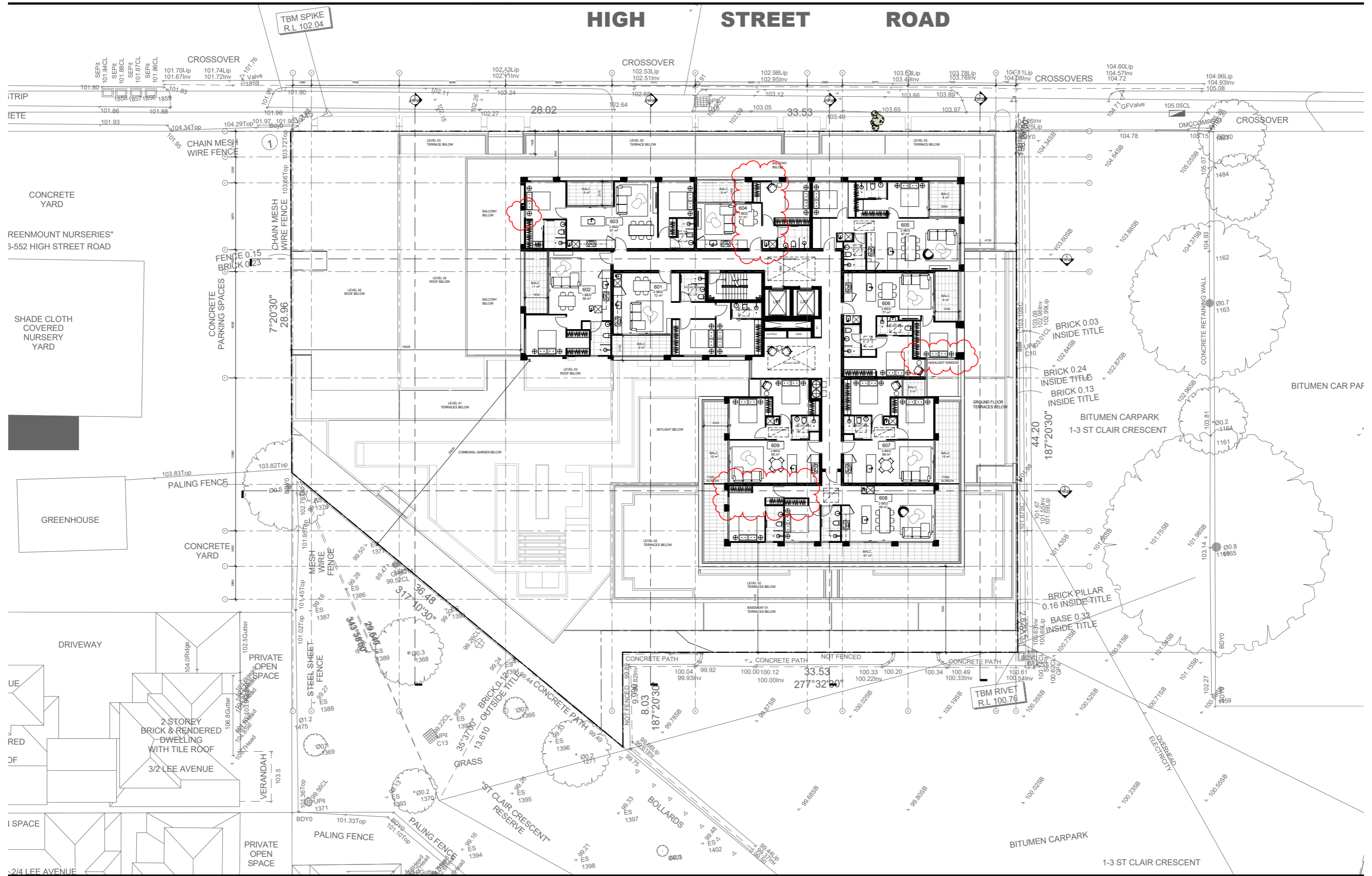
DRAWING STATUS
 TOWN PLANNING - RFI

JOB N° 17020
REVISION N° A
DATE 12/12/2018
SCALE 1:100 @A0
DRAWN BY BM
CHECKED BY DC

DRAWING TITLE
 PROPOSED LEVEL 04 PLAN

A-TP-109

HIGH STREET ROAD



CS - A
 Cera Stribley Architects
 Cera Stribley Pty. Ltd
 ABN 29 350 985 700
 +61 3 9533 2582
 info@cs-a.com.au
 www.cs-a.com.au
 Studio 4, 240 Chapel St
 Prahran VIC 3181 AUS

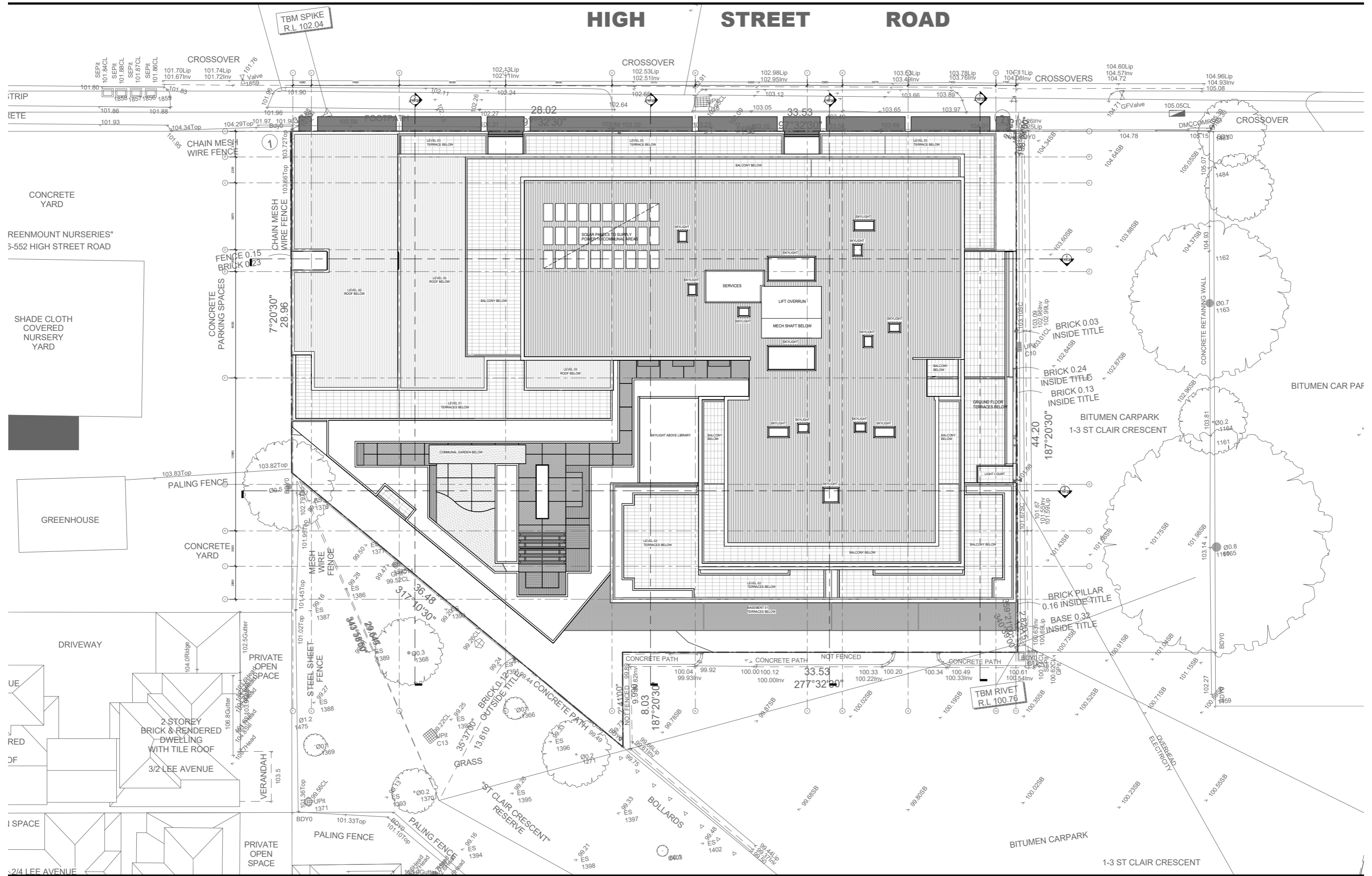
NOTES
 Do not scale. Contractor must verify all dimensions on site before commencing any work or engineering shop drawings which must be approved by the architect before manufacture. Any state entitled work shown on this drawing must be claimed and approved before proceeding.
COPYRIGHT
 Reproduction of the whole or part of the document constitutes an infringement of copyright. The information, ideas and concepts contained in this document are confidential. The recipient(s) of this document is/are prohibited from disclosing such information, ideas and concepts to any person without prior written consent of the copyright holder.

REV DATE	REVISION	BY	CHK	REV DATE	REVISION	BY	CHK
A	12.12.18 Town Planning RFI	RH	DC				

PROJECT
 554-556 HIGH STREET ROAD
 554-556 HIGH STREET ROAD, MOUNT WAVERLEY
 OVER 55'S RESIDENTIAL DEVELOPMENT
DRAWING STATUS
 TOWN PLANNING - RFI

JOB N° 17020
REVISION N° A
DATE 12/12/2018
SCALE 1:100 @A0
DRAWN BY BM
CHECKED BY DC
DRAWING TITLE
 PROPOSED LEVEL 05 PLAN

HIGH STREET ROAD



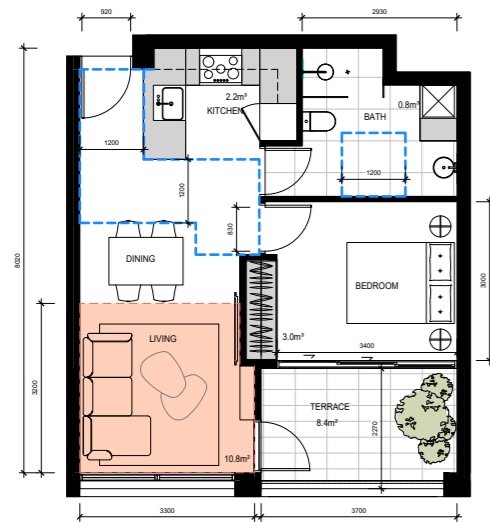
CS-A
 Cera Stribley Architects
 Cera Stribley Pty. Ltd
 ABN 29 350 955 700
 +61 3 9533 2582
 info@cs-a.com.au
 www.cs-a.com.au
 Studio 4, 249 Chapel St
 Prahran VIC 3181 AUS

NOTES
 Do not scale. Contractor must verify all dimensions on site before commencing any work or engineering shop drawings which must be approved by the architect before manufacture.
 Any state entitled work shown on this drawing must be claimed and approved before proceeding.
COPYRIGHT
 Reproduction of the whole or part of the document constitutes an infringement of copyright.
 The information, ideas and concepts contained in this document is confidential. The recipient(s) of this document is/are prohibited from disclosing such information, ideas and concepts to any person without prior written consent of the copyright holder.

REV	DATE	REVISION	BY	CHK	REV	DATE	REVISION	BY	CHK
A	12.12.18	Town Planning RFI	RH	DC					

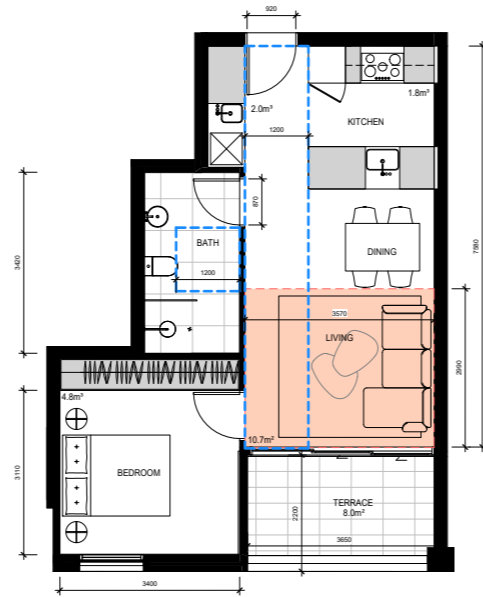
PROJECT
 554-556 HIGH STREET ROAD
 554-556 HIGH STREET ROAD, MOUNT WAVERLEY
 OVER 55'S RESIDENTIAL DEVELOPMENT
DRAWING STATUS
 TOWN PLANNING - RFI

JOB N° 17020
REVISION N° A
DATE 12/12/2018
SCALE 1:100 @A0
DRAWN BY BM
CHECKED BY DC
DRAWING TITLE
 PROPOSED ROOF PLAN



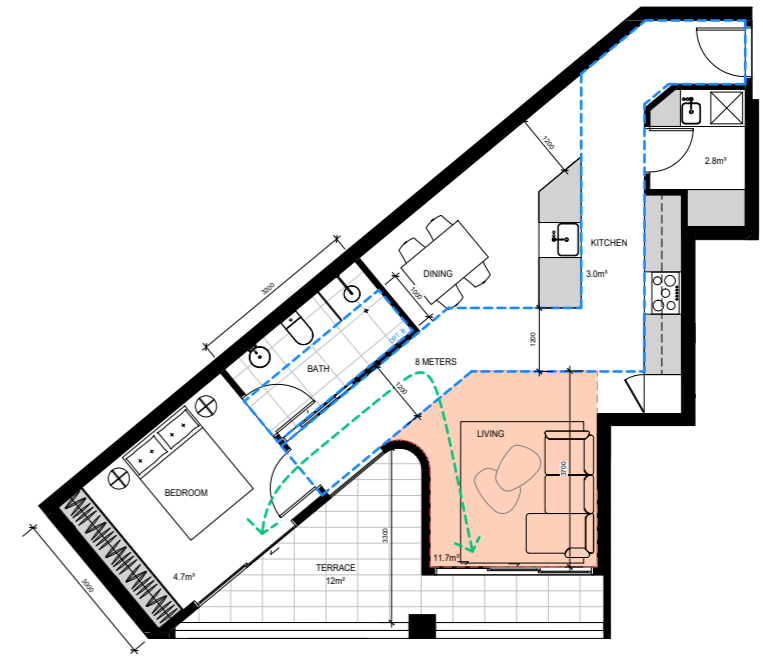
TYPE 1A

215 8m² + 8m² BALC
8 m³ STORAGE



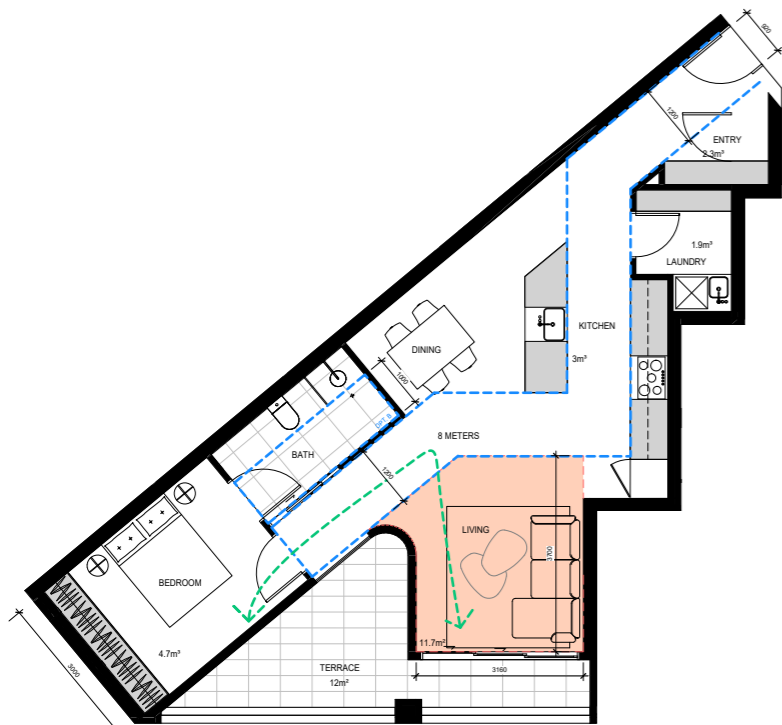
TYPE 1B

100 100 8m² + 8m² BALC
8 m³ STORAGE



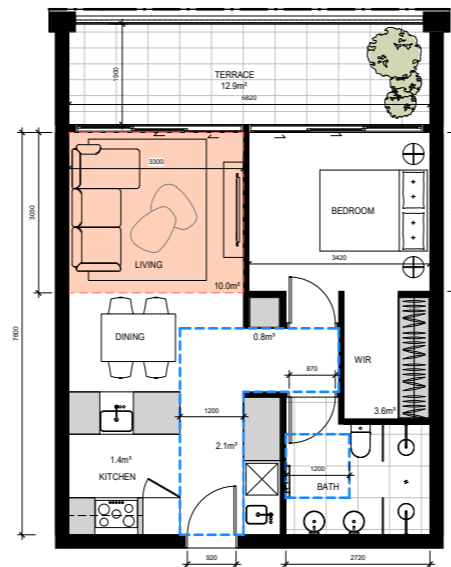
TYPE 1C-A

107 7m² + 12m² BALC
10 m³ STORAGE



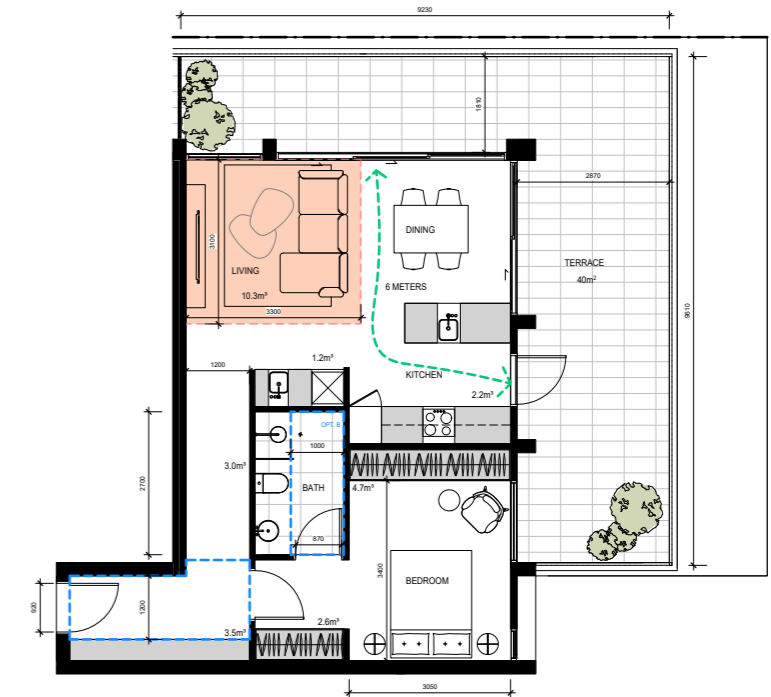
TYPE 1C-B

104 7m² + 12m² BALC
11 m³ STORAGE



TYPE 1D

100 100 100 8m² + 10.1m² BALC
7 m³ STORAGE



TYPE 1E

104 8m² + 40m² BALC
8 m³ STORAGE



Cera Stribley Architects
Cera Stribley Pty. Ltd.
ABN 29 350 585 700
+ 61 3 9533 2582
info@cs-a.com.au
www.cs-a.com.au
Studio 4, 240 Chapel St
Prahran VIC 3181 AUS

NOTES
Do not scale. Contractor must verify all dimensions on site before commencing any work or engineering shop drawings which must be approved by the architect before manufacture.
Any extra entailed work shown on this drawing must be claimed and approved before proceeding.

COPYRIGHT
Reproduction of the whole or part of this document constitutes an infringement of copyright.
The information, ideas and concepts contained in this document is/are confidential. The recipient(s) of this document is/are prohibited from disclosing such information, ideas and concepts to any person without prior written consent of the copyright holder.

REV DATE	REVISION	BY	CHK	REV DATE	REVISION	BY	CHK
A	12.12.18 Town Planning RFI	RH	DC				

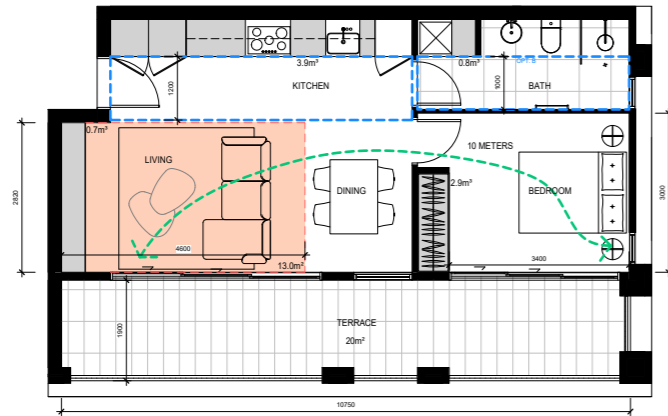
PROJECT
554-556 HIGH STREET ROAD
554-556 HIGH STREET ROAD, MOUNT WAVERLEY
OVER 55'S RESIDENTIAL DEVELOPMENT

DRAWING STATUS
TOWN PLANNING - RFI

JOB N° 17020
REVISION N° A
DATE 12/12/2018
SCALE 1:50 @A0
DRAWN BY BM
CHECKED BY DC

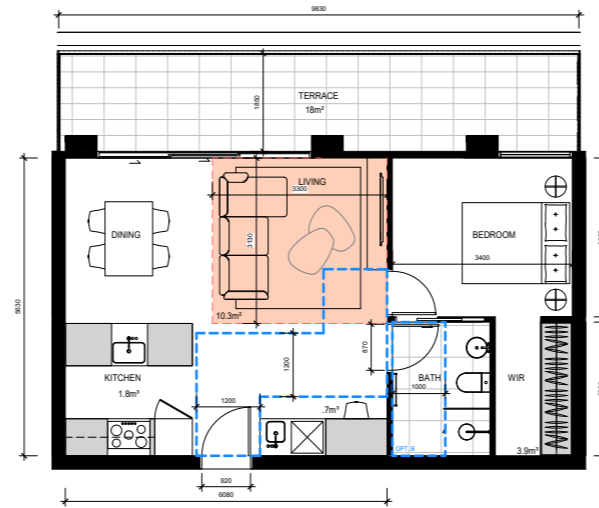
DRAWING TITLE
TYPOLOGY PLANS - ONE BEDROOM

A-TP-200



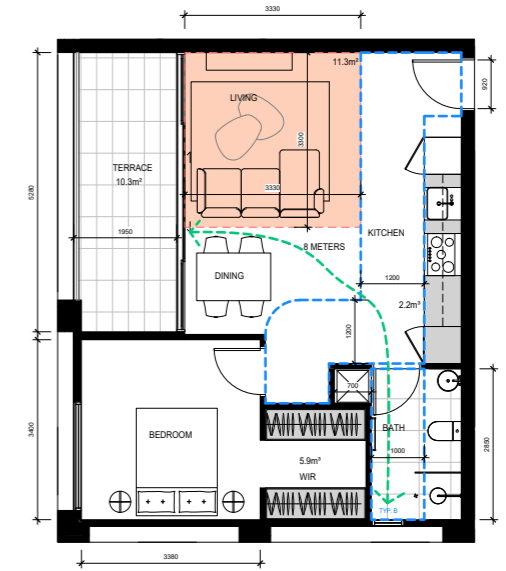
TYPE 1F

Shm + 10mm BALC
6.3 m² STORAGE



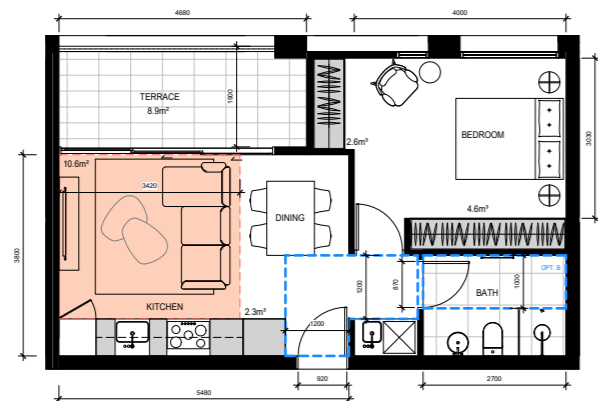
TYPE 1G

Shm + 10mm BALC
6.4 m² STORAGE



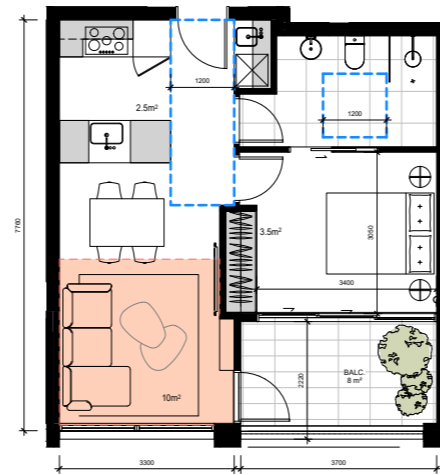
TYPE 1H

Shm + 10mm BALC
6.1 m² STORAGE



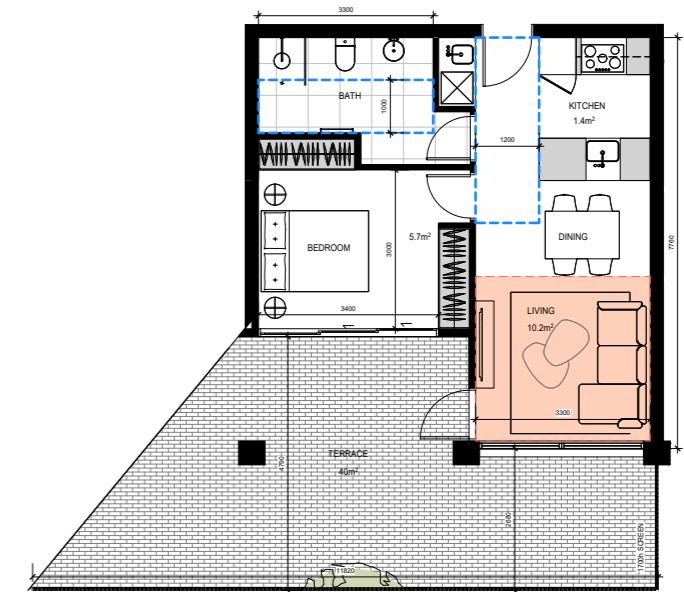
TYPE 1I

Shm + 8.3mm BALC
9.6 m² STORAGE



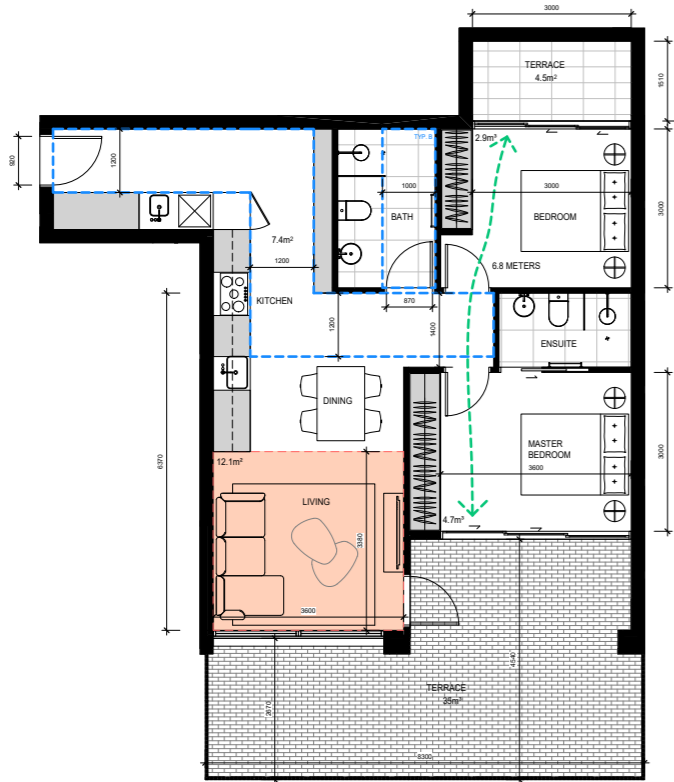
TYPE 1J

Shm + 8mm BALC
6 m² STORAGE



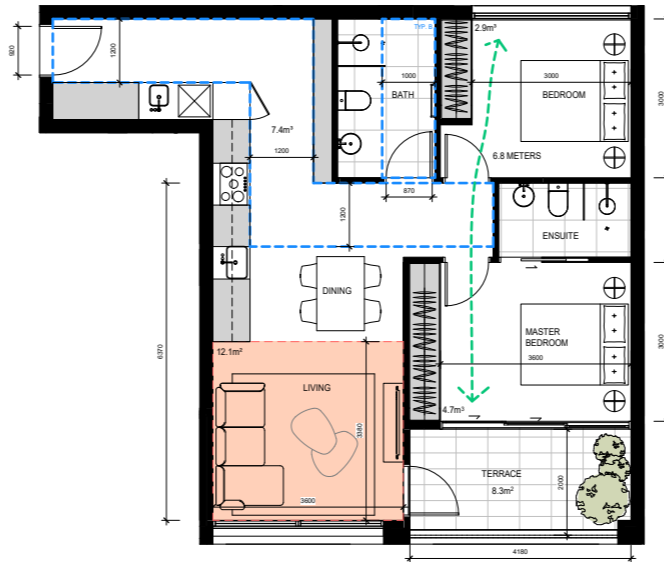
TYPE 1K

Shm + 8.4mm BALC
7.1 m² STORAGE



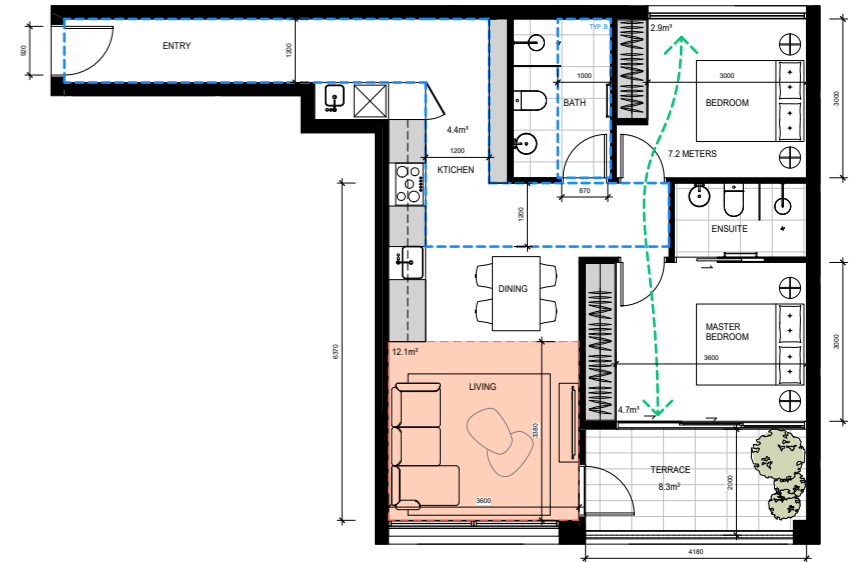
TYPE 2A-A

75sqm + 3.5sqm BALC
15 m² STORAGE



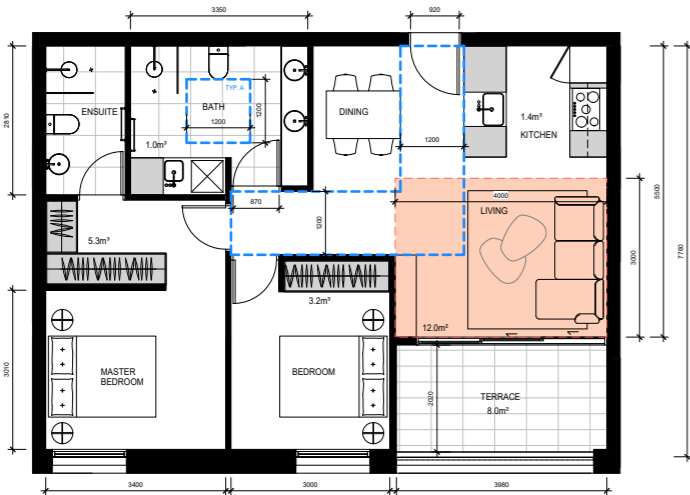
TYPE 2A-B

75sqm + 4.3sqm BALC
15 m² STORAGE



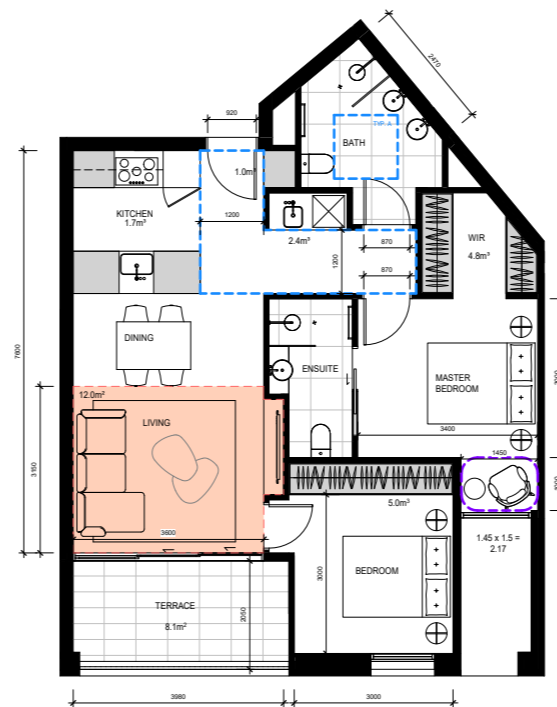
TYPE 2A-C

60sqm + 3.5sqm BALC
12 m² STORAGE



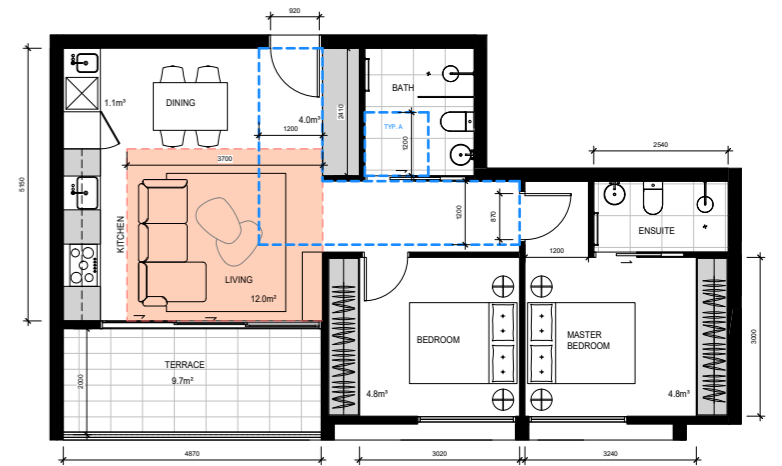
TYPE 2B

75sqm + 3.5sqm BALC
15 m² STORAGE



TYPE 2C

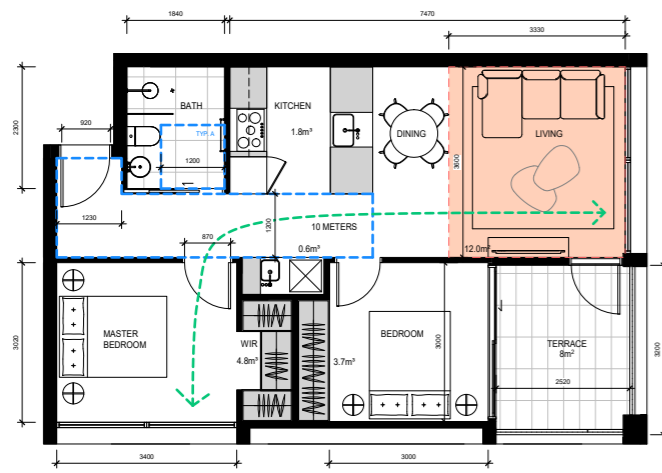
75sqm + 3.1sqm BALC
12 m² STORAGE



TYPE 2D

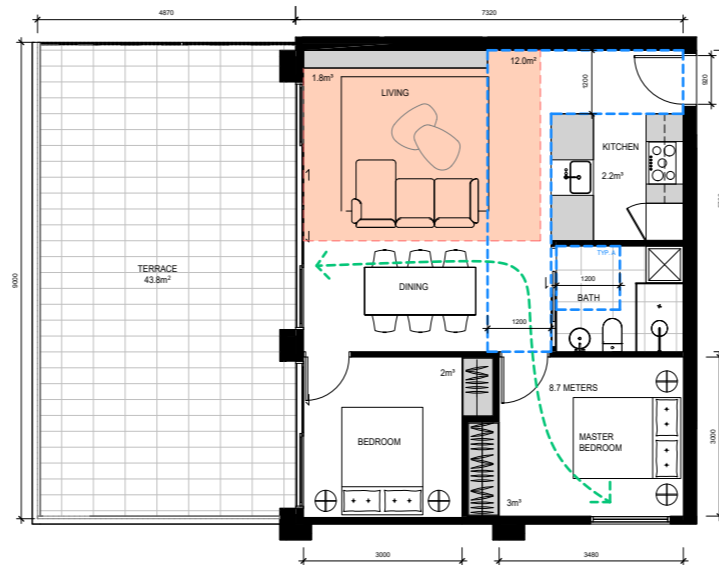
72sqm + 3.7sqm BALC
14 m² STORAGE

REV DATE	REVISION	BY	CHK	REV DATE	REVISION	BY	CHK
A	12.12.18 Town Planning RFI	RH	DC				



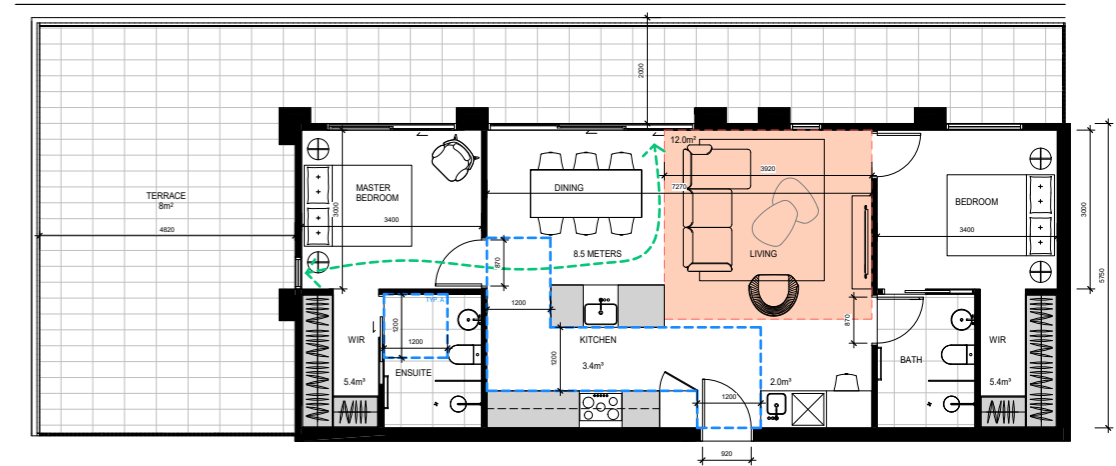
TYPE 2J

412 413
 67sqm + 4sqm BALC
 18.4m² STORAGE



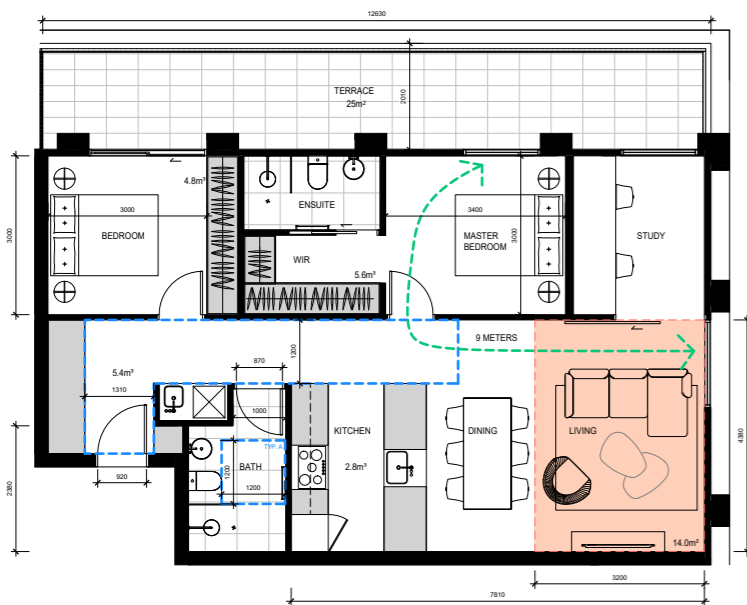
TYPE 2K

502
 67sqm + 43.8sqm BALC
 11.8m² STORAGE



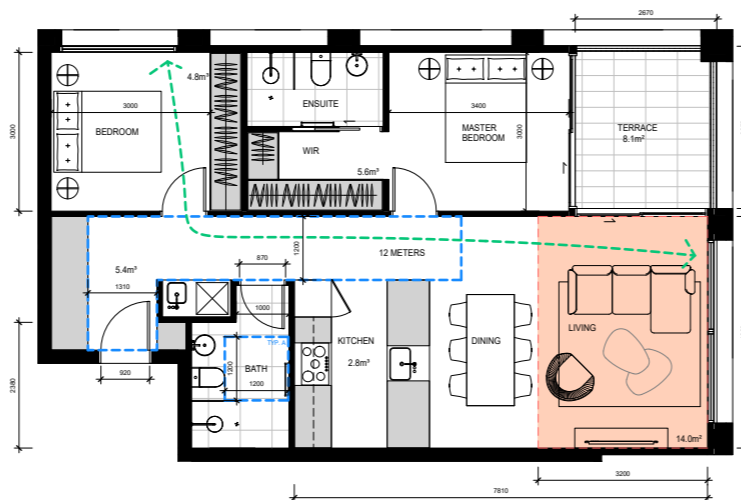
TYPE 2L

501
 67sqm + 8sqm BALC
 14.2m² STORAGE



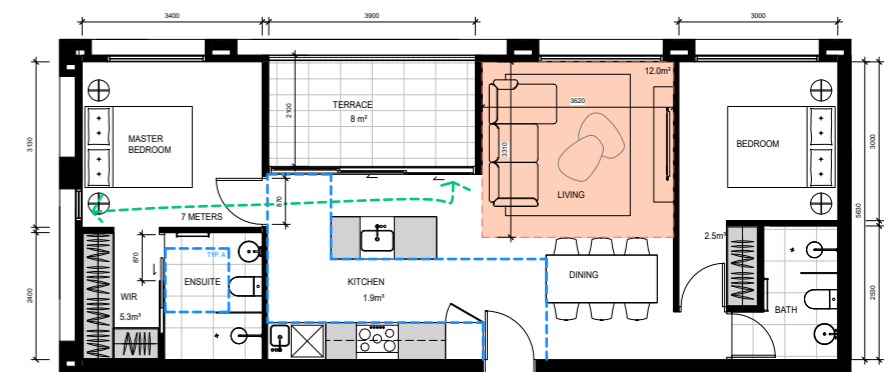
TYPE 2M.A

506
 87sqm + 25sqm BALC
 18.8m² STORAGE



TYPE 2M.B

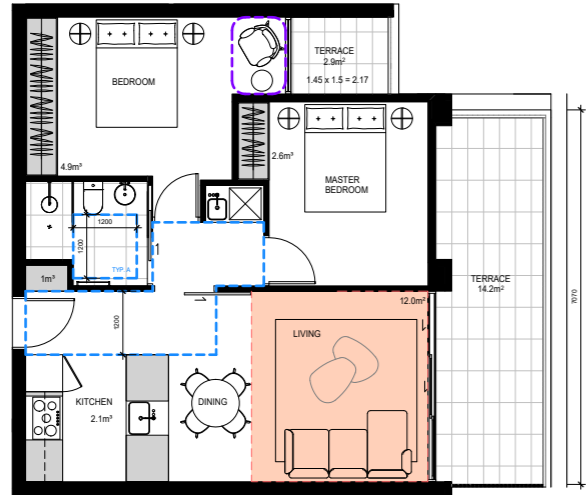
505
 67sqm + 8.1sqm BALC
 18.9m² STORAGE



TYPE 2N

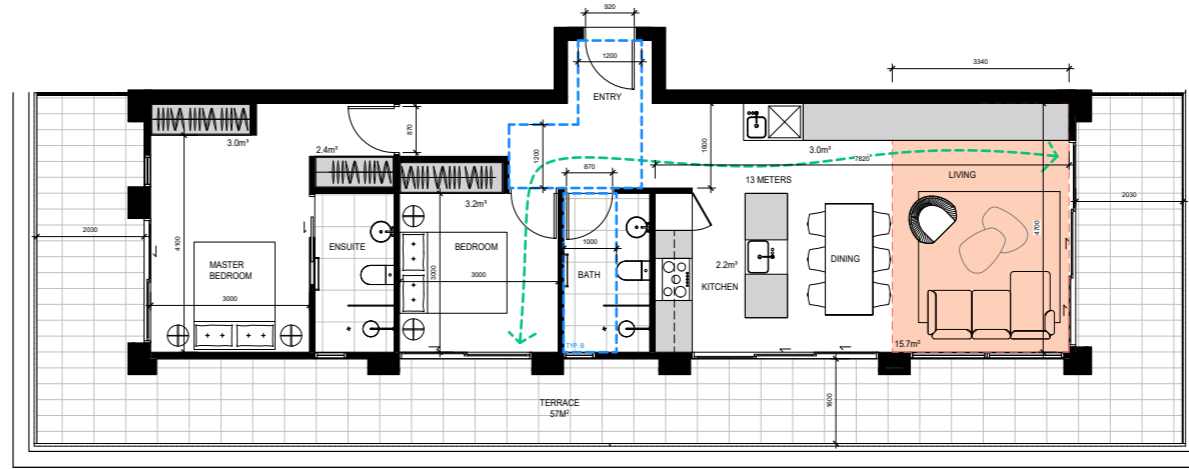
503
 67sqm + 8sqm BALC
 9.7m² STORAGE

REV DATE	REVISION	BY	CHK	REV DATE	REVISION	BY	CHK
A	12.12.18 Town Planning RFI	RH	DC				



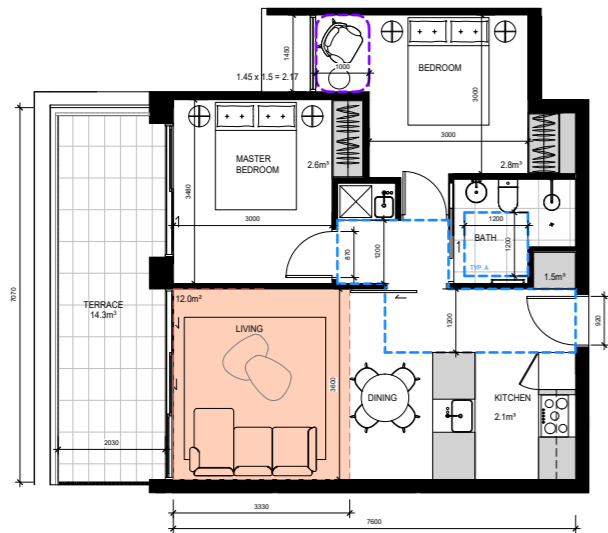
TYPE 20

Slope = 1:12 BALC
10.8 m² STORAGE



TYPE 2P

Slope = 1:12 BALC
13.8 m² STORAGE



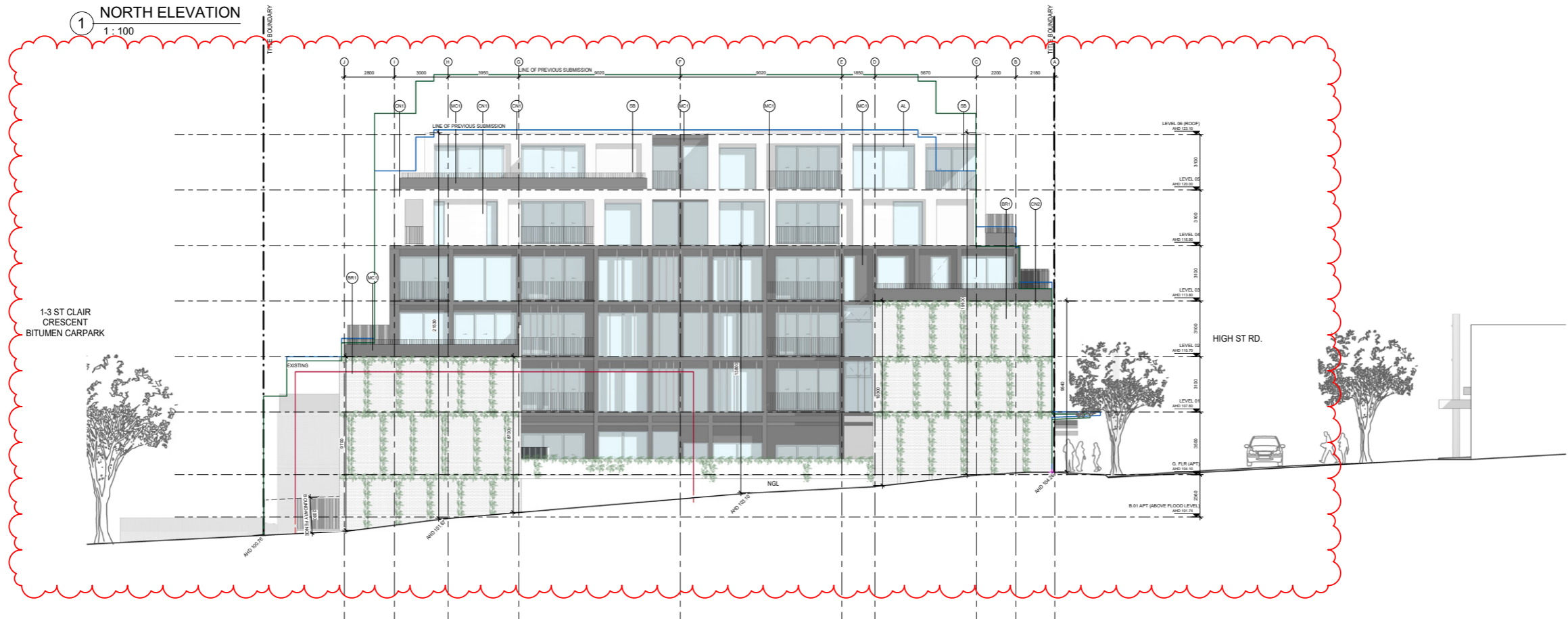
TYPE 2Q

Slope = 1:12 BALC
10.8 m² STORAGE

REV DATE	REVISION	BY	CHK	REV DATE	REVISION	BY	CHK
A	12.12.18 Town Planning RFI	RH	DC				



1 NORTH ELEVATION
1 : 100



2 EAST ELEVATION
1 : 100

ELEVATION KEY

EXISTING CONDITIONS - - - - -

PREVIOUS SUBMISSION SUBMISSION - - - - -

PREVIOUS SUBMISSION SUBMISSION - - - - -

MATERIAL LEGEND

BR1 - BRICK VENEER

CN1 - CONCRETE FINISH

CN2 - CONCRETE FINISH

MC1 - METAL CLADDING

SB - STEEL BALUSTRADE

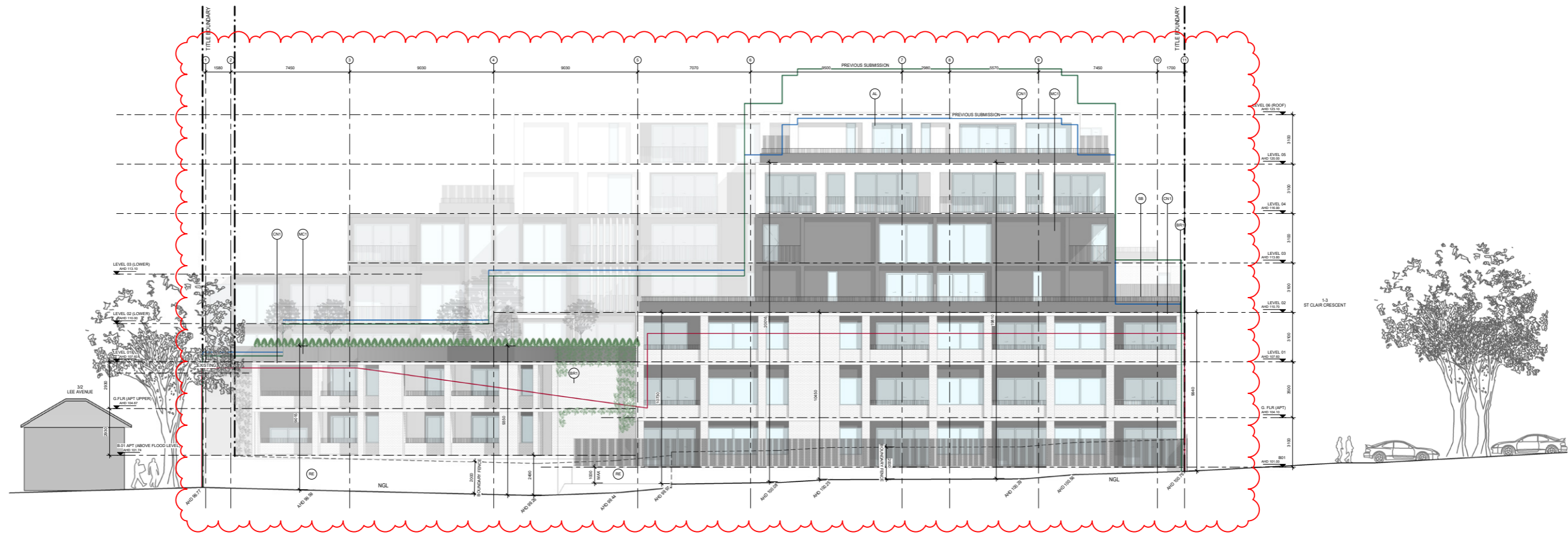
AL - ALUMINIUM FRAME

RE - RENDER FINISH

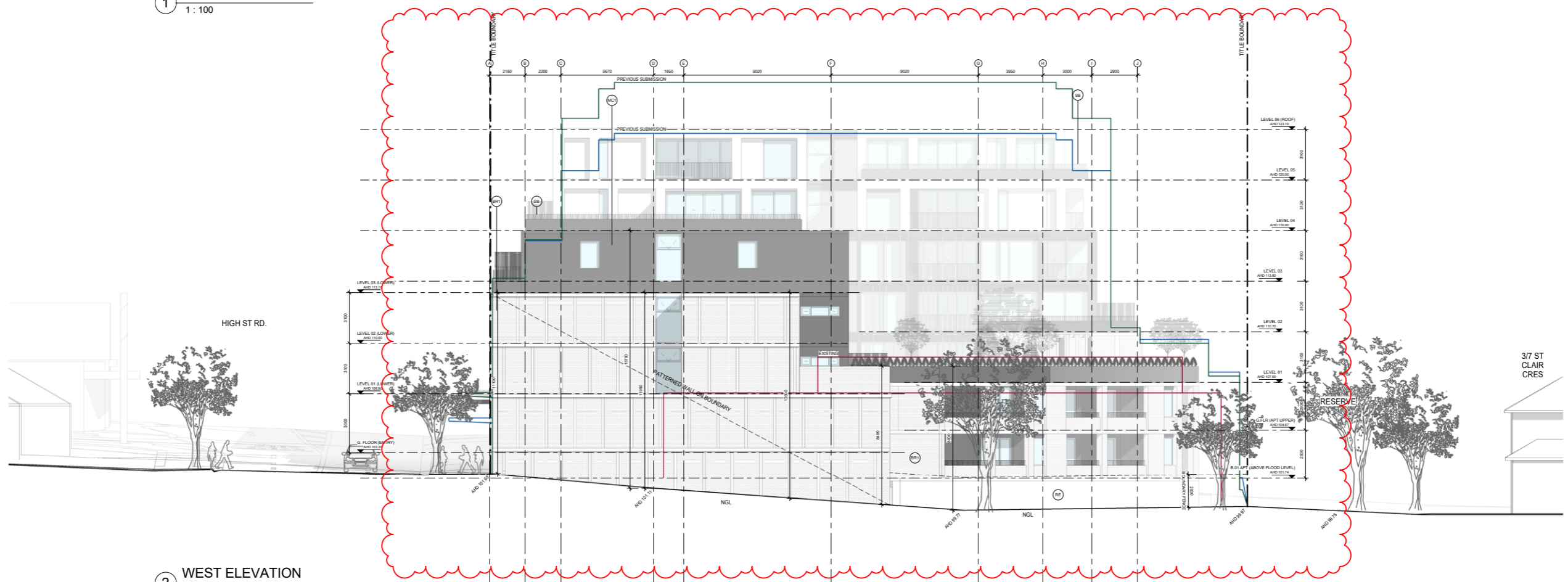
NOTE

REFER FINISHES SCHEDULE FOR DETAILED MATERIAL SELECTION

REV DATE	REVISION	BY	CHK	REV DATE	REVISION	BY	CHK
A	12.12.18 Town Planning RFI	RH	DC				



1 SOUTH ELEVATION
1 : 100



2 WEST ELEVATION
1 : 100

ELEVATION KEY

EXISTING CONDITIONS - - - - -

PREVIOUS SUBMISSION - - - - -

PREVIOUS SUBMISSION - - - - -

MATERIAL LEGEND

BR1 - BRICK VENEER

CN1 - CONCRETE FINISH

CN2 - CONCRETE FINISH

MC1 - METAL CLADDING

SB - STEEL BALUSTRADE

AL - ALUMINIUM FRAME

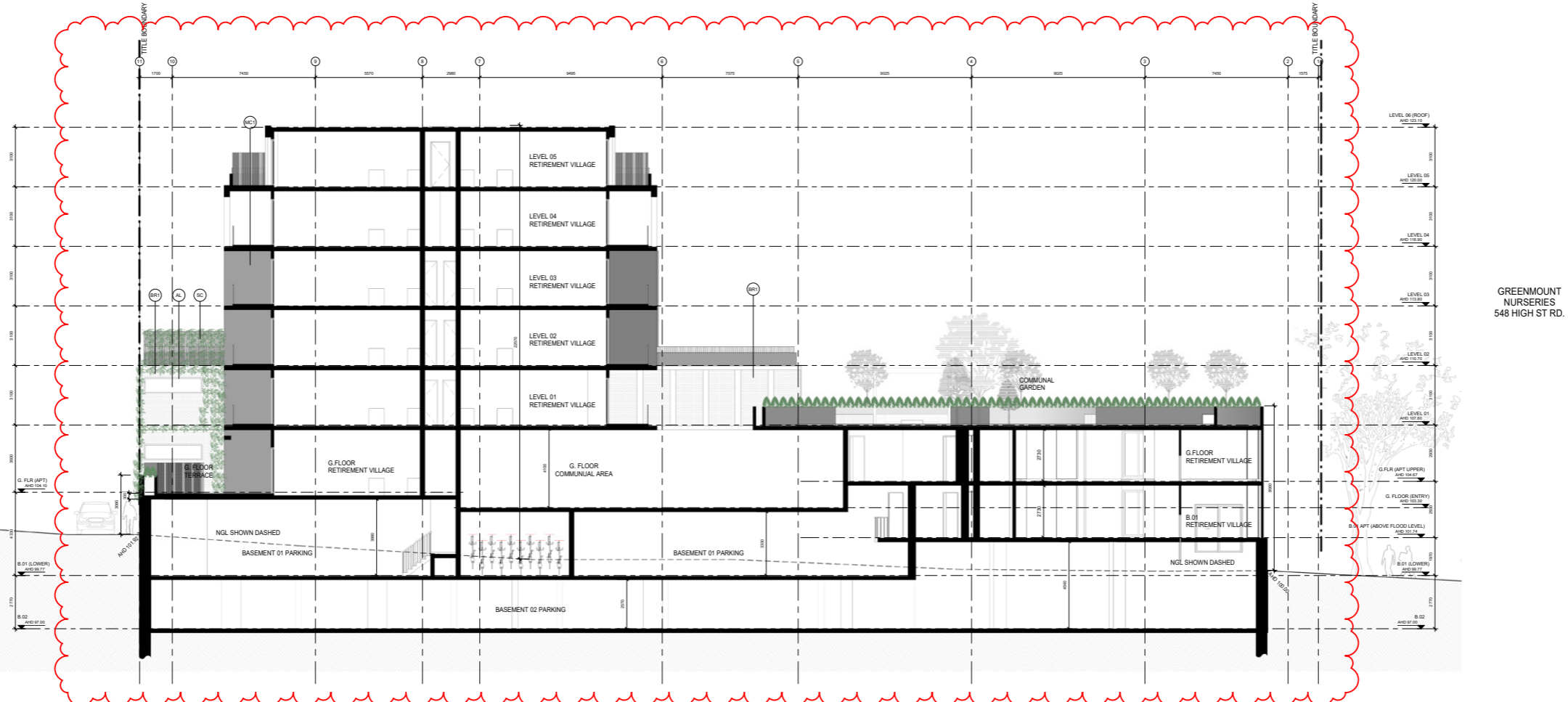
RE - RENDER FINISH

NOTE:
REFER FINISHES SCHEDULE FOR DETAILED MATERIAL SELECTION

REV DATE	REVISION	BY	CHK	REV DATE	REVISION	BY	CHK
A	12.12.18 Town Planning RFI	RH	DC				



1 SOUTH-WEST ELEVATION
1:100



2 NORTH INTERNAL
1:100

ELEVATION KEY

EXISTING CONDITIONS - - - - -

PREVIOUS SUBMISSION - - - - -

PREVIOUS SUBMISSION - - - - -

MATERIAL LEGEND

BR1 - BRICK VENEER

CN1 - CONCRETE FINISH

CN2 - CONCRETE FINISH

MC1 - METAL CLADDING

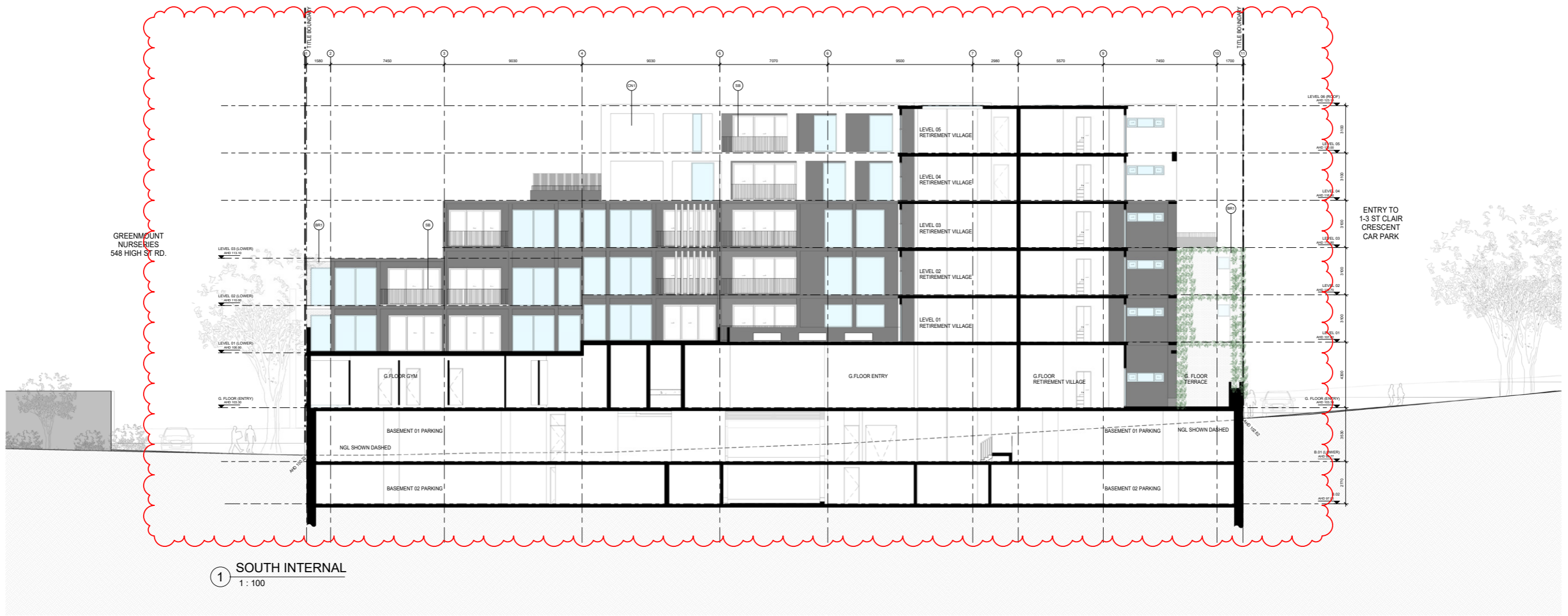
SB - STEEL BALUSTRADE

AL - ALUMINIUM FRAME

RE - RENDER FINISH

NOTE:
REFER FINISHES SCHEDULE FOR DETAILED MATERIAL SELECTION

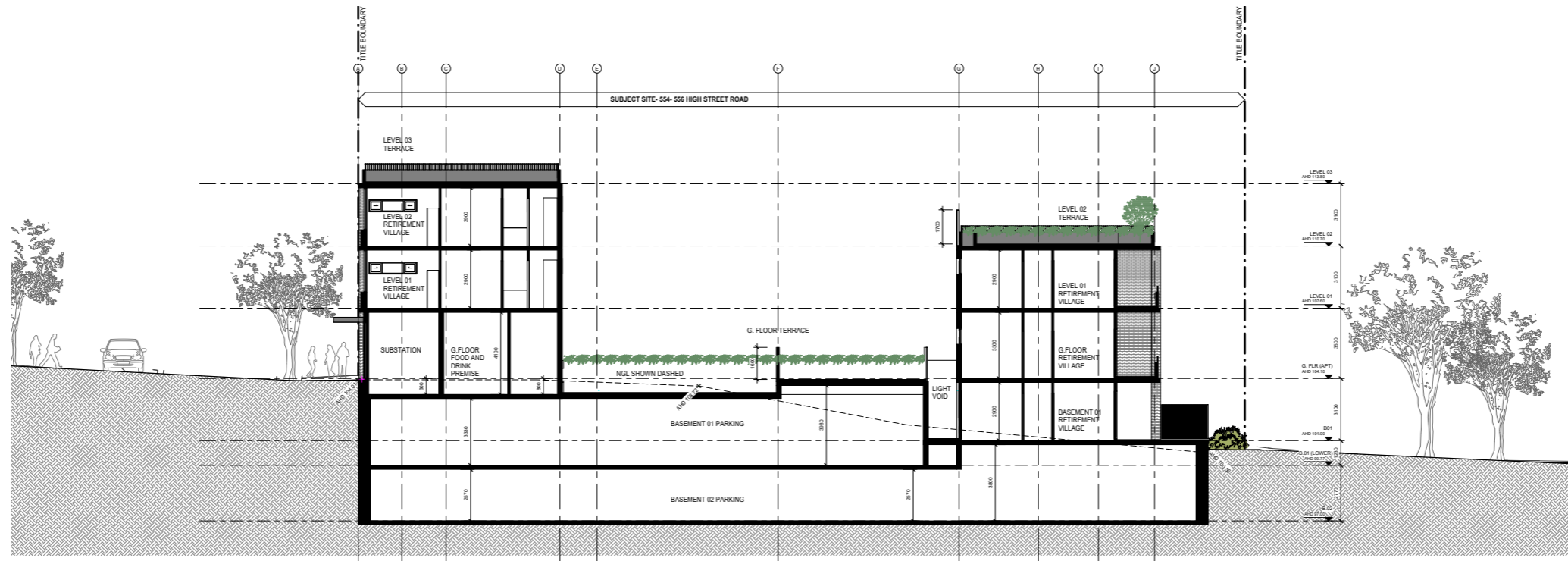
REV DATE	REVISION	BY	CHK	REV DATE	REVISION	BY	CHK
A	12.12.18 Town Planning RFI	RH	DC				



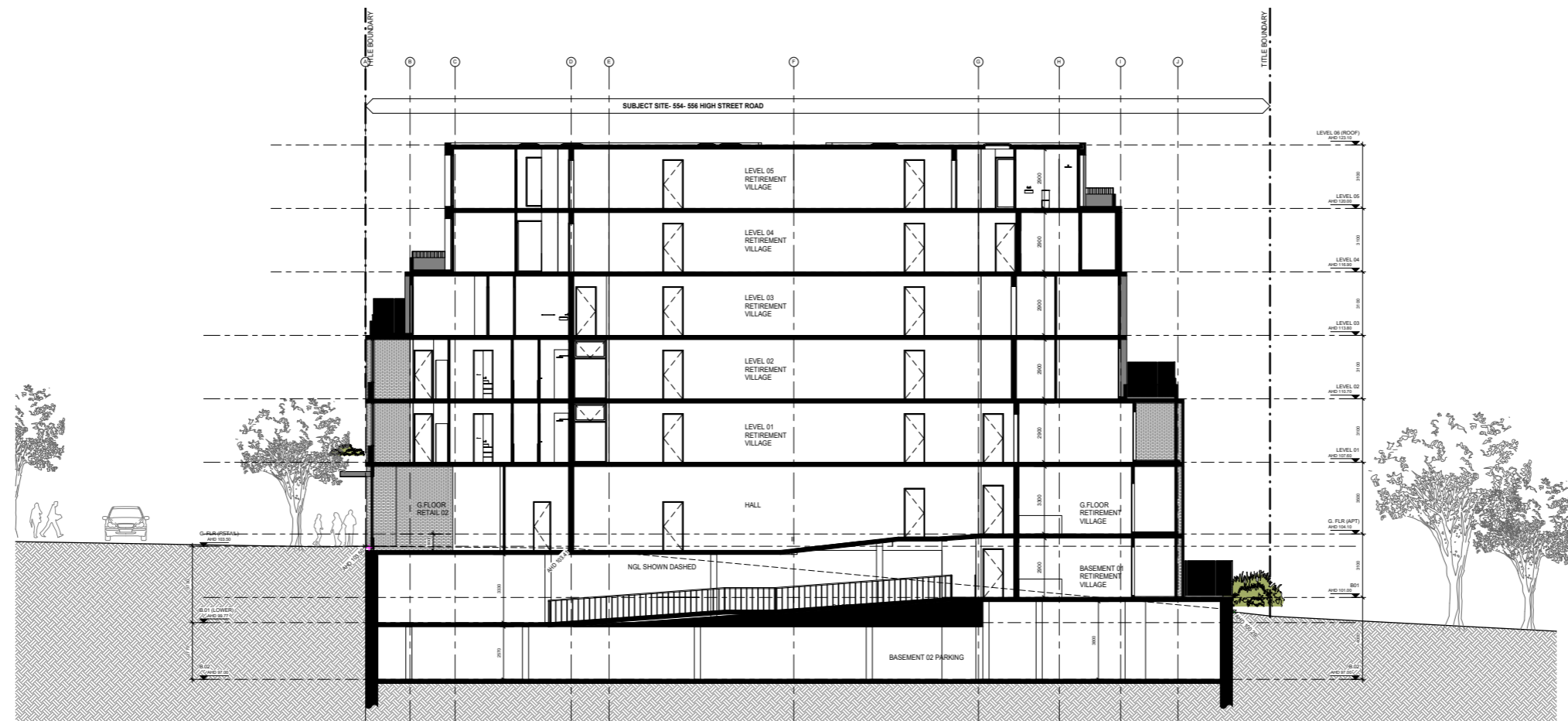
1 SOUTH INTERNAL
1 : 100

ELEVATION KEY	
EXISTING CONDITIONS	---
PREVIOUS SUBMISSION SUBMISSION	---
PREVIOUS SUBMISSION SUBMISSION	---
MATERIAL LEGEND	
BR1 - BRICK VENEER	
CN1 - CONCRETE FINISH	
CN2 - CONCRETE FINISH	
MC1 - METAL CLADDING	
SB - STEEL BALUSTRADE	
AL - ALUMINIUM FRAME	
RE - RENDER FINISH	
NOTE: REFER FINISHES SCHEDULE FOR DETAILED MATERIAL SELECTION	

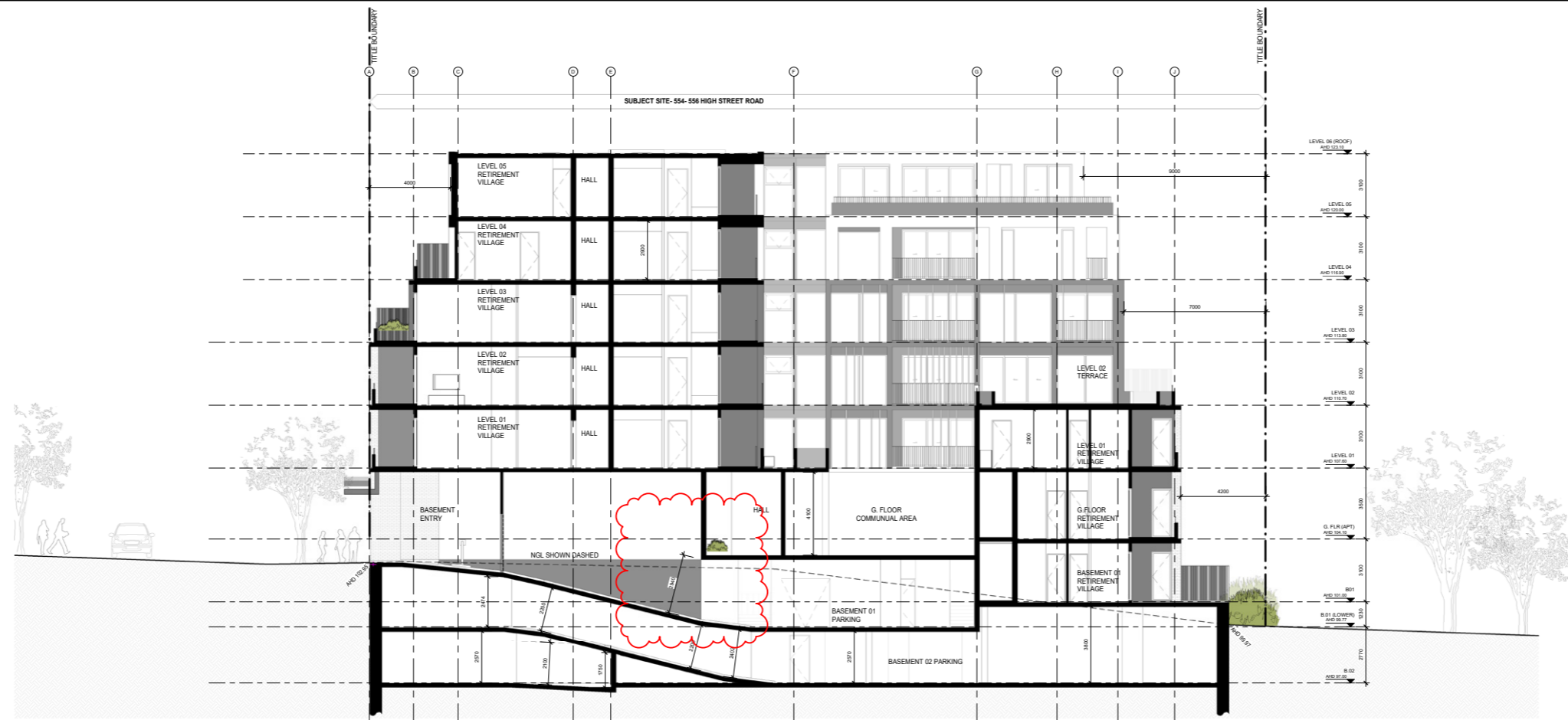
REV DATE	REVISION	BY	CHK	REV DATE	REVISION	BY	CHK
A	12.12.18 Town Planning RFI	RH	DC				



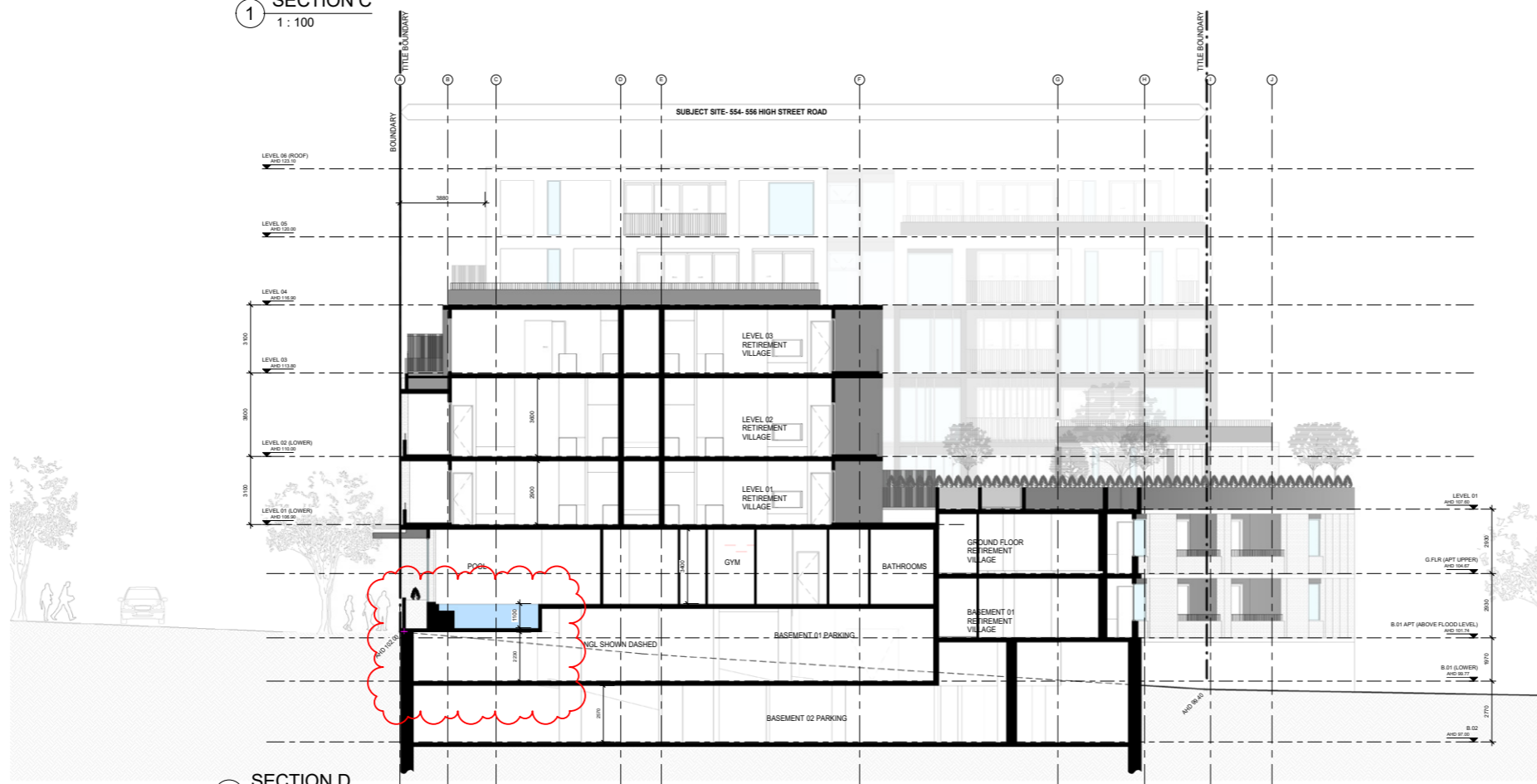
1 SECTION A
1 : 100



2 SECTION B
1 : 100

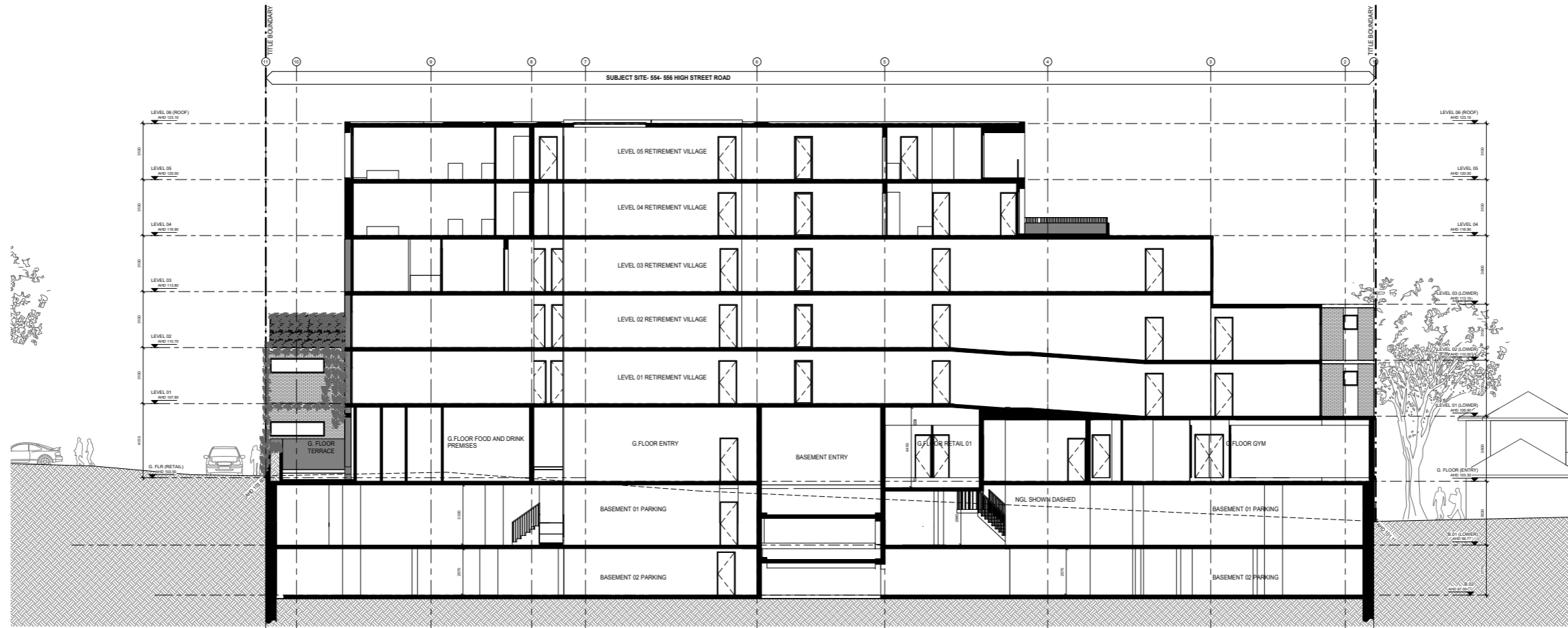


1 SECTION C
1:100

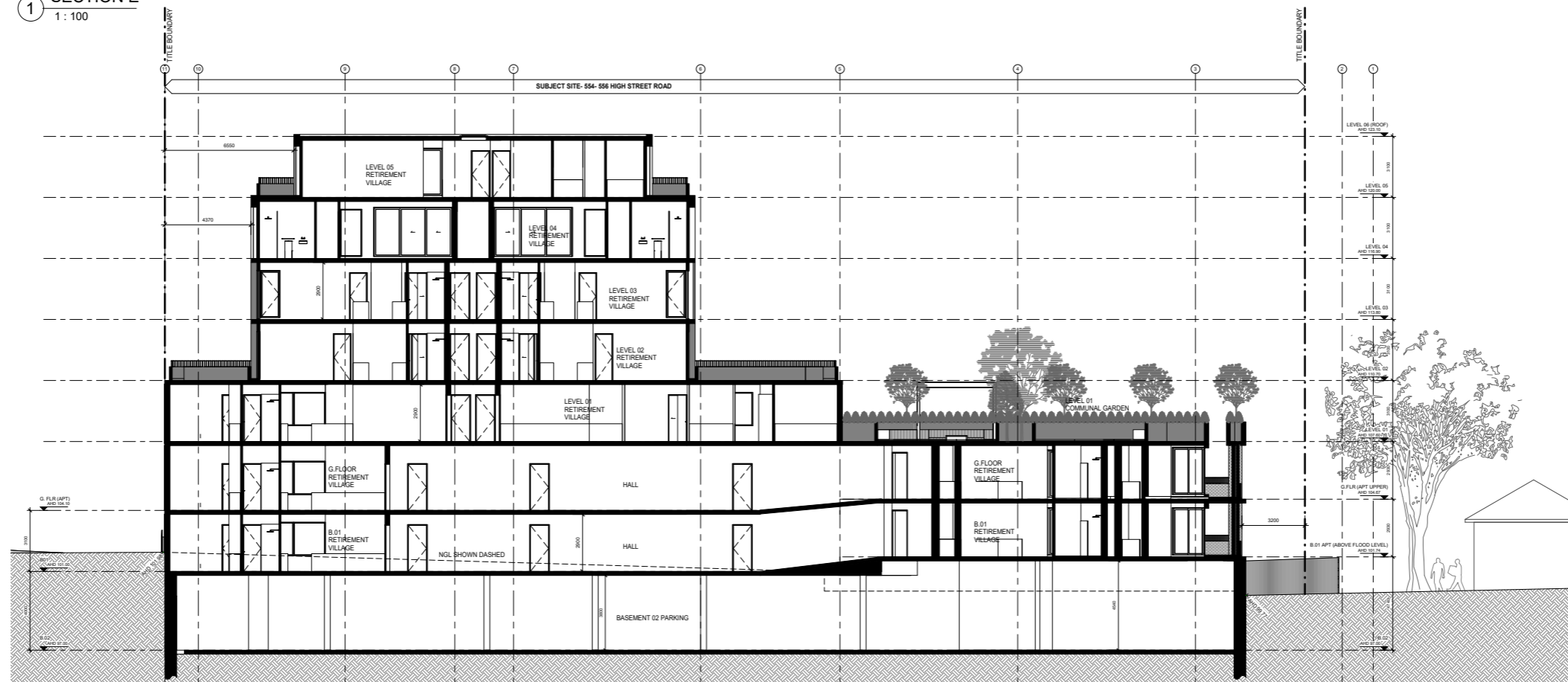


2 SECTION D
1:100

REV DATE	REVISION	BY	CHK	REV DATE	REVISION	BY	CHK
A	12.12.18 Town Planning RFI	RH	DC				



1 SECTION E
1 : 100



2 SECTION F
1 : 100