

**PLANTING LEGEND**

**PROPOSED TREE**  
IN MULCHED GARDEN BED. REFER DETAIL

**PROPOSED SHRUBS, TUFTING AND GROUNDCOVERS**  
IN MULCHED AND IRRIGATED RAISED PLANTER BOX REFER DETAIL

**FINISHES LEGEND**

**P1 : PAVEMENT PROFILE 1 - NATURAL STONE PAVER ON PEDESTAL SYSTEM**  
REFER DETAIL

**P2: PAVEMENT PROFILE 2**  
NATURAL STONE PAVER  
FUTURE DETAIL

**G1: GARDEN BED PROFILE 1**  
MULCHED GARDEN BED  
IN FEATURE POT. REFER DETAIL

**G2: GARDEN BED PROFILE 2**  
PLANTED, MULCHED AND IRRIGATED GARDEN BED  
REFER DETAIL

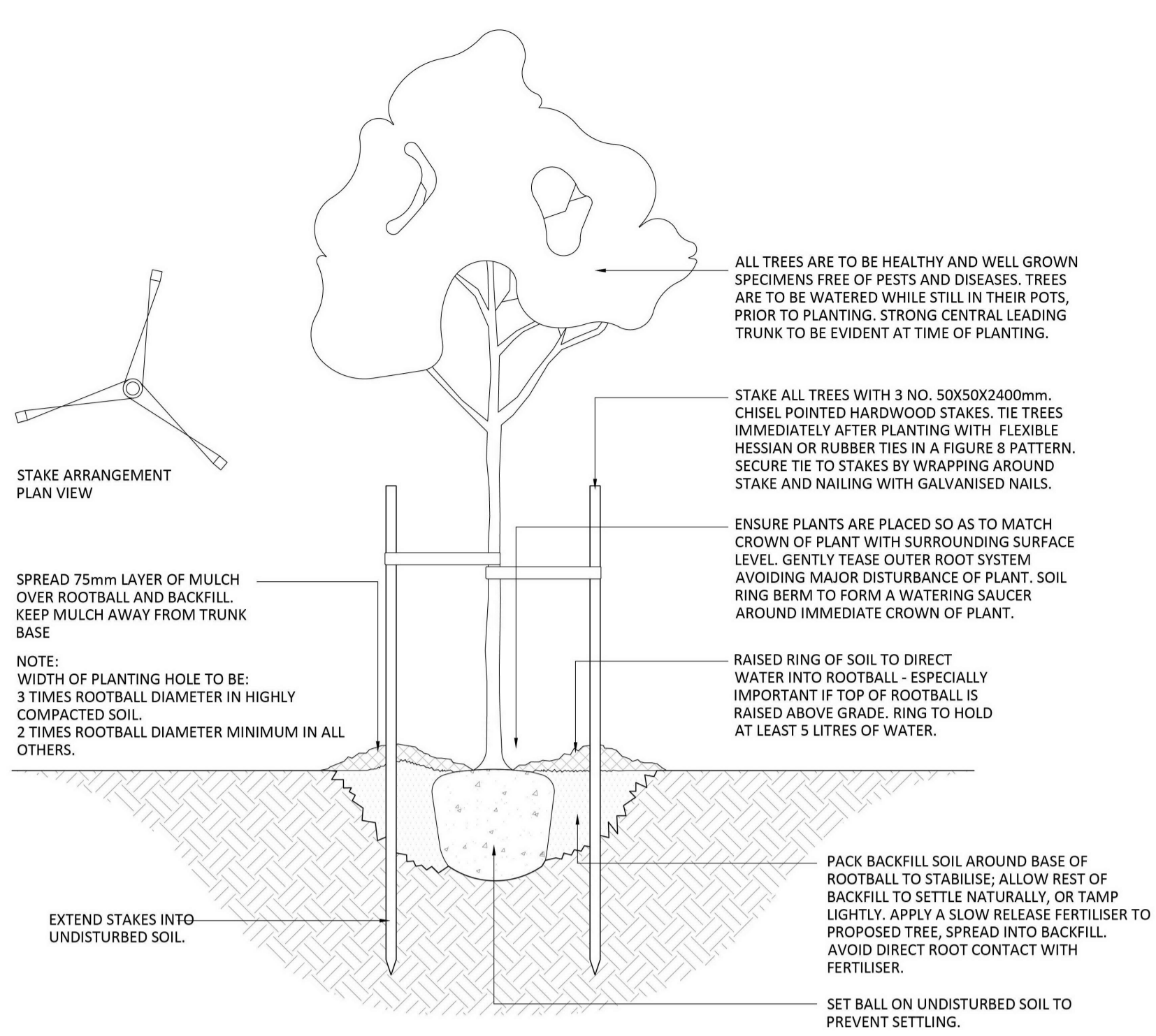
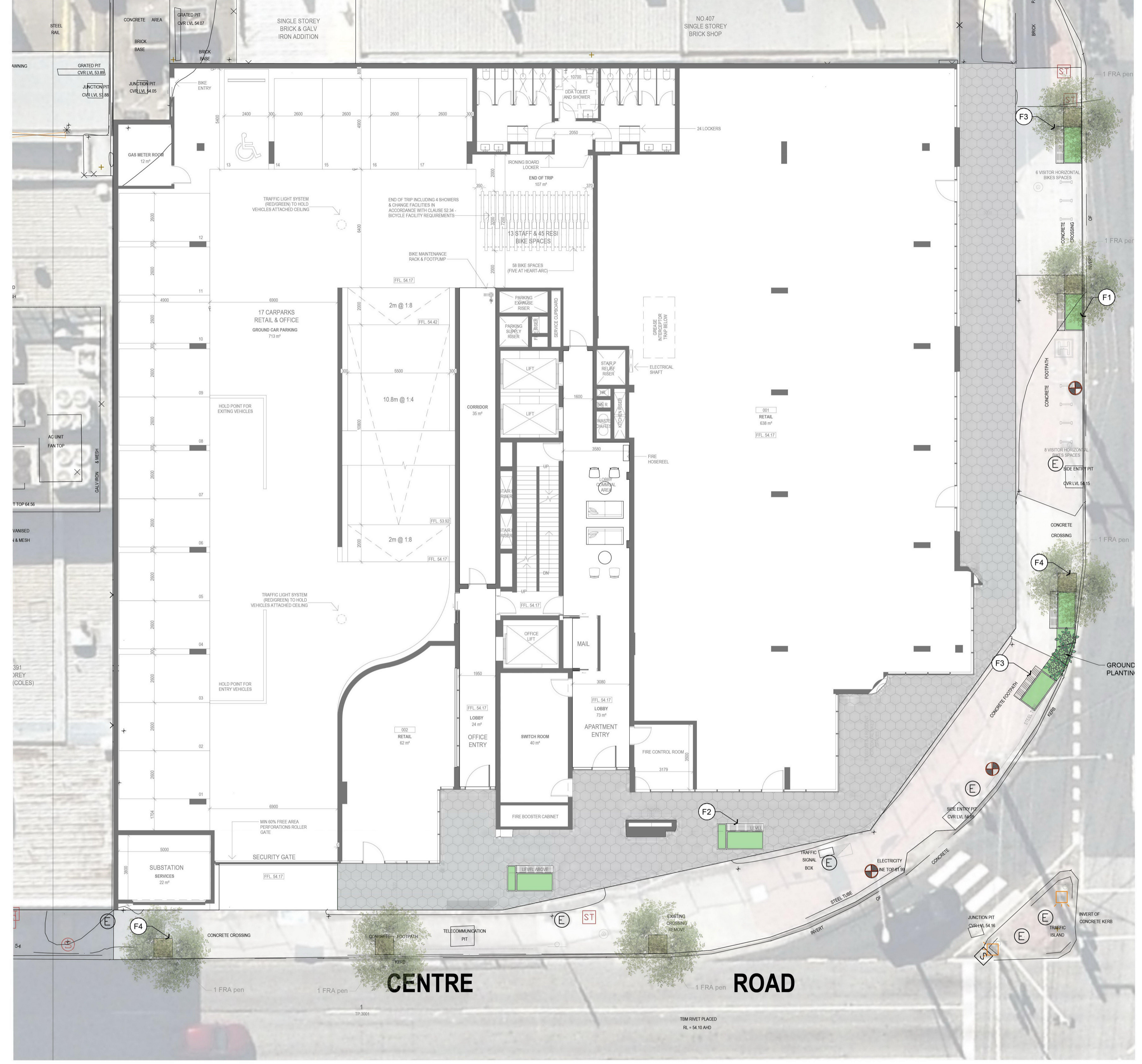
**FURNITURE LEGEND**

**F1: FURNITURE TYPE 1**  
800mm PLANTER BOX MEASURED FROM FFL  
REFER DETAIL

**F2: FURNITURE TYPE 2**  
MODULAR PLANTER BOX WITH BUILT-IN SEATING  
FUTURE DETAIL

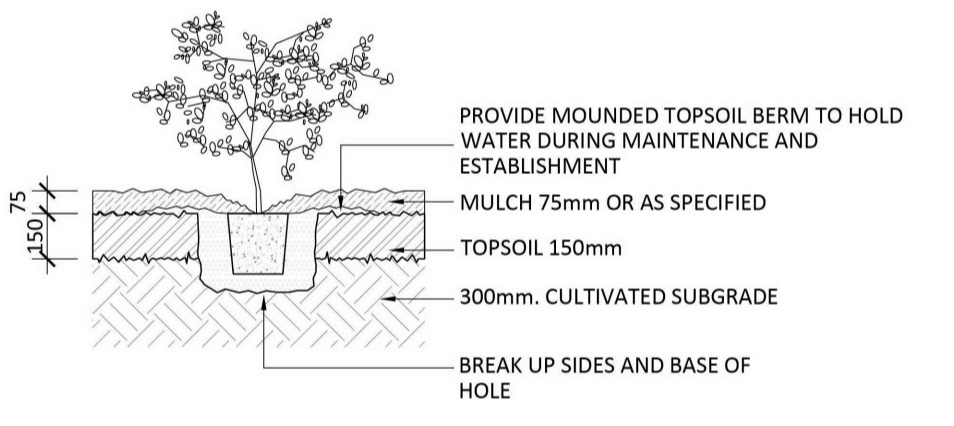
**F3: FURNITURE TYPE 3 - IN-BUILT BENCH SEAT**  
450mm HEIGHT - HARDWOOD TIMBER FINISH  
FUTURE DETAIL

**F4: FURNITURE TYPE 4 - PROPOSED TREE GRATE**  
FUTURE DETAIL



**1 TYPICAL TREE PLANTING DETAIL**  
SECTION DETAIL  
1:25

- SHRUB PLANTING NOTES:**
1. DIG HOLE TWICE AS DEEP AS ROOTBALL AND ALLOW AT LEAST 200mm. AROUND SIDES FOR BACKFILLING WITH TOPSOIL.
  2. APPLY FERTILISER IN BASE OF HOLE, COVER WITH TOPSOIL AS SPECIFIED. AVOID ROOT CONTACT.
  3. PLACE PLANT IN CENTRE OF HOLE, BACKFILL WITH APPROVED TOPSOIL, FIRING PROGRESSIVELY.
  4. WATER WELL INTO SAUCER AROUND CROWN OF PLANT.
  5. STAKE LARGER SHRUBS WHERE NECESSARY, USING 50 X 50 X 1200mm SIZE HARDWOOD STAKES.



**3 TYPICAL SHRUB PLANTING DETAIL**  
SECTION DETAIL  
1:25

**ADVERTISED COPY - CITY OF MONASH**  
This copied document is made available for the sole purpose of enabling its consideration and review as part of a planning process under the Planning and Environment Act.  
The document must not be used for any purpose which may breach copyright.

**PROJECT INFORMATION**  
Project No: 13934  
Drawing No: LCP\_001  
Revision No: A  
Date: 15.08.23  
Director: DA

REV	DESCRIPTION	DWN	CHK	DATE
A	FOR APPROVAL	MA	GA	15.08.23

**DISCLAIMER**  
Copyright by Human Habitats Pty Ltd. This drawing or parts thereof may not be reproduced for any purpose or used for another project without the express written consent of Human Habitats other than for the purposes of actual ordering, supply, installation, or construction. This drawing must be read in conjunction with all relevant contracts, schedules, specifications, drawings and any other issued written instructions. Do not scale from drawings. Written figured dimensions take preference to scaled dimensions and must be verified on site prior to proceeding with any work. All discrepancies must be referred to the superintendent for a written decision prior to ordering, supply or installation. Human Habitats must be notified in writing of any discrepancies.

PLANTING LEGEND

- PROPOSED TREE IN MULCHED AND IRRIGATED RAISED PLANTER BOX REFER DETAIL
- PROPOSED SHRUBS, TUFTING AND GROUNDCOVERS IN MULCHED AND IRRIGATED RAISED PLANTER BOX REFER DETAIL

FINISHES LEGEND

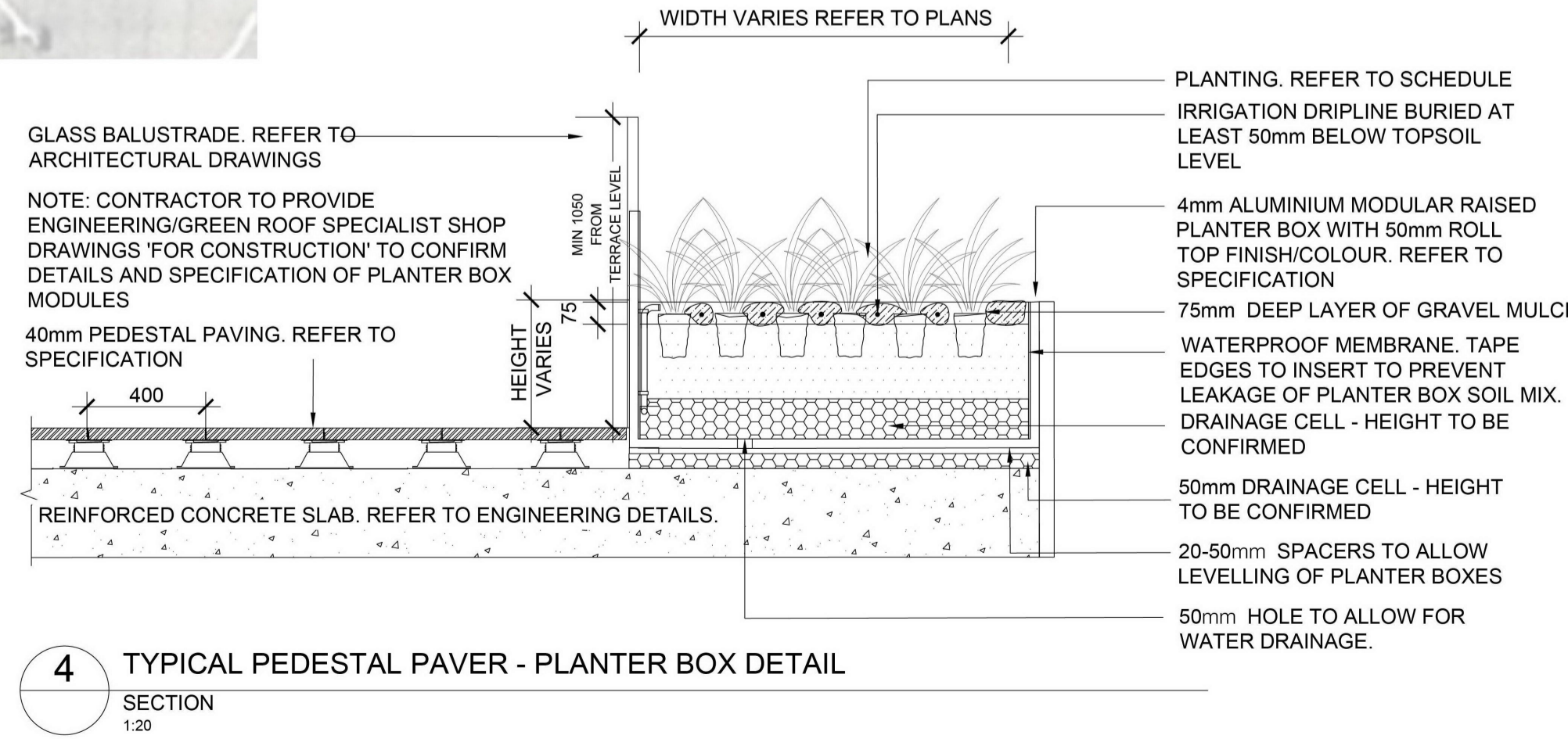
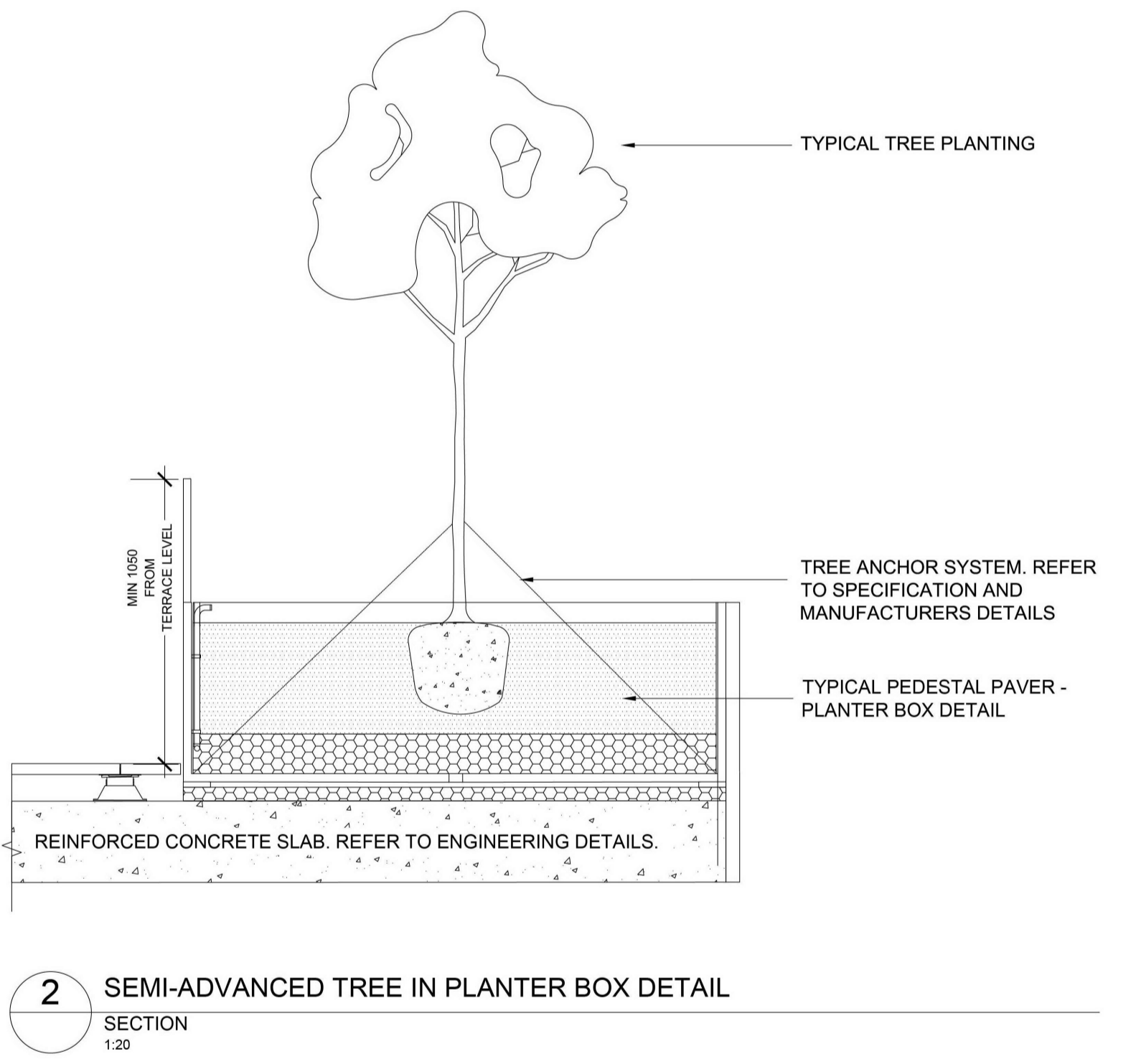
- P1 : PAVEMENT PROFILE 1 - NATURAL STONE PAVER ON PEDESTAL SYSTEM REFER DETAIL
- P2: PAVEMENT PROFILE 2 NATURAL STONE PAVER FUTURE DETAIL
- G1: GARDEN BED PROFILE 1 MULCHED GARDEN BED IN FEATURE POT. REFER DETAIL
- G2: GARDEN BED PROFILE 2 PLANTED, MULCHED AND IRRIGATED GARDEN BED REFER DETAIL

FURNITURE LEGEND

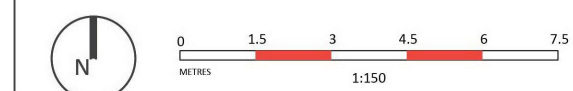
- F1: FURNITURE TYPE 1 800mm PLANTER BOX MEASURED FROM FFL REFER DETAIL
- F2: FURNITURE TYPE 2 MODULAR PLANTER BOX WITH BUILT-IN SEATING FUTURE DETAIL
- F3: FURNITURE TYPE 3 - IN-BUILT BENCH SEAT 450mm HEIGHT - HARDWOOD TIMBER FINISH FUTURE DETAIL
- F4: FURNITURE TYPE 4 - PROPOSED TREE GRATE FUTURE DETAIL



**ADVERTISED COPY - CITY OF MONASH**  
 This copied document is made available for the sole purpose of enabling its consideration and review as part of a planning process under the Planning and Environment Act. The document must not be used for any purpose which may breach copyright.



**409 CLAYTON ROAD, CLAYTON VIC**  
 LANDSCAPE CONCEPT PLAN- PODIUM TOP



**PROJECT INFORMATION**  
 Project No: 13934  
 Drawing No: LCP\_002  
 Revision No: A  
 Date: 15.08.23  
 Director: DA

REV	DESCRIPTION	DWN	CHK	DATE
A	FOR APPROVAL	MA	GA	15.08.23

**DISCLAIMER**  
 Copyright by Human Habitats Pty Ltd. This drawing or parts thereof may not be reproduced for any purpose or used for another project without the express written consent of Human Habitats other than for the purposes of actual ordering, supply, installation, or construction. This drawing must be read in conjunction with all relevant contracts, schedules, specifications, drawings and any other issued written instructions. Do not scale from drawings. Written figured dimensions take preference to scaled dimensions and must be verified on site prior to proceeding with any work. All discrepancies must be referred to the superintendent for a written decision prior to ordering, supply or installation. Human Habitats must be notified in writing of any discrepancies.

PLANTING LEGEND

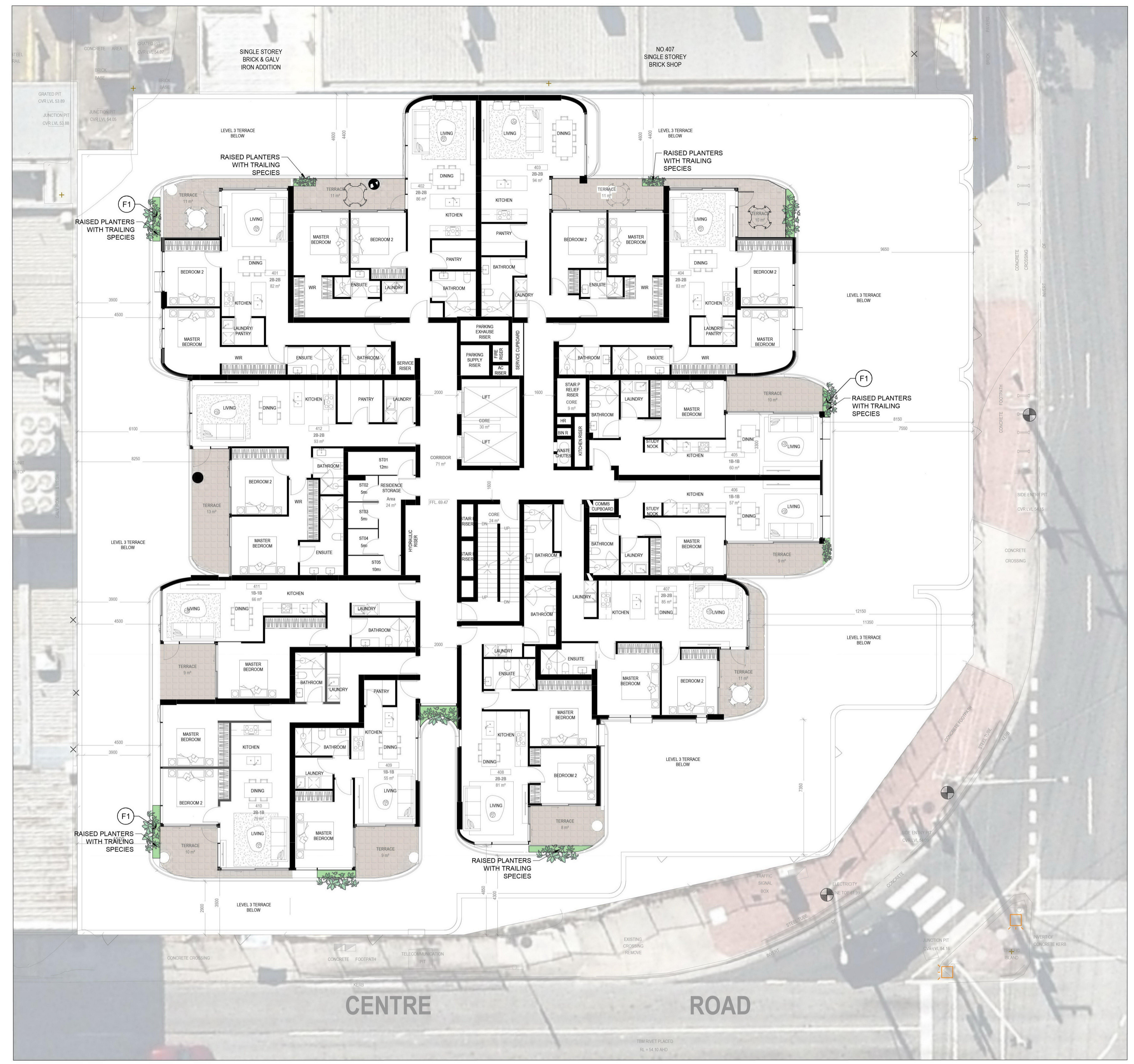
- PROPOSED TREE IN MULCHED AND IRRIGATED RAISED PLANTER BOX REFER DETAIL
- PROPOSED SHRUBS, TUFTING AND GROUNDCOVERS IN MULCHED AND IRRIGATED RAISED PLANTER BOX REFER DETAIL

FINISHES LEGEND

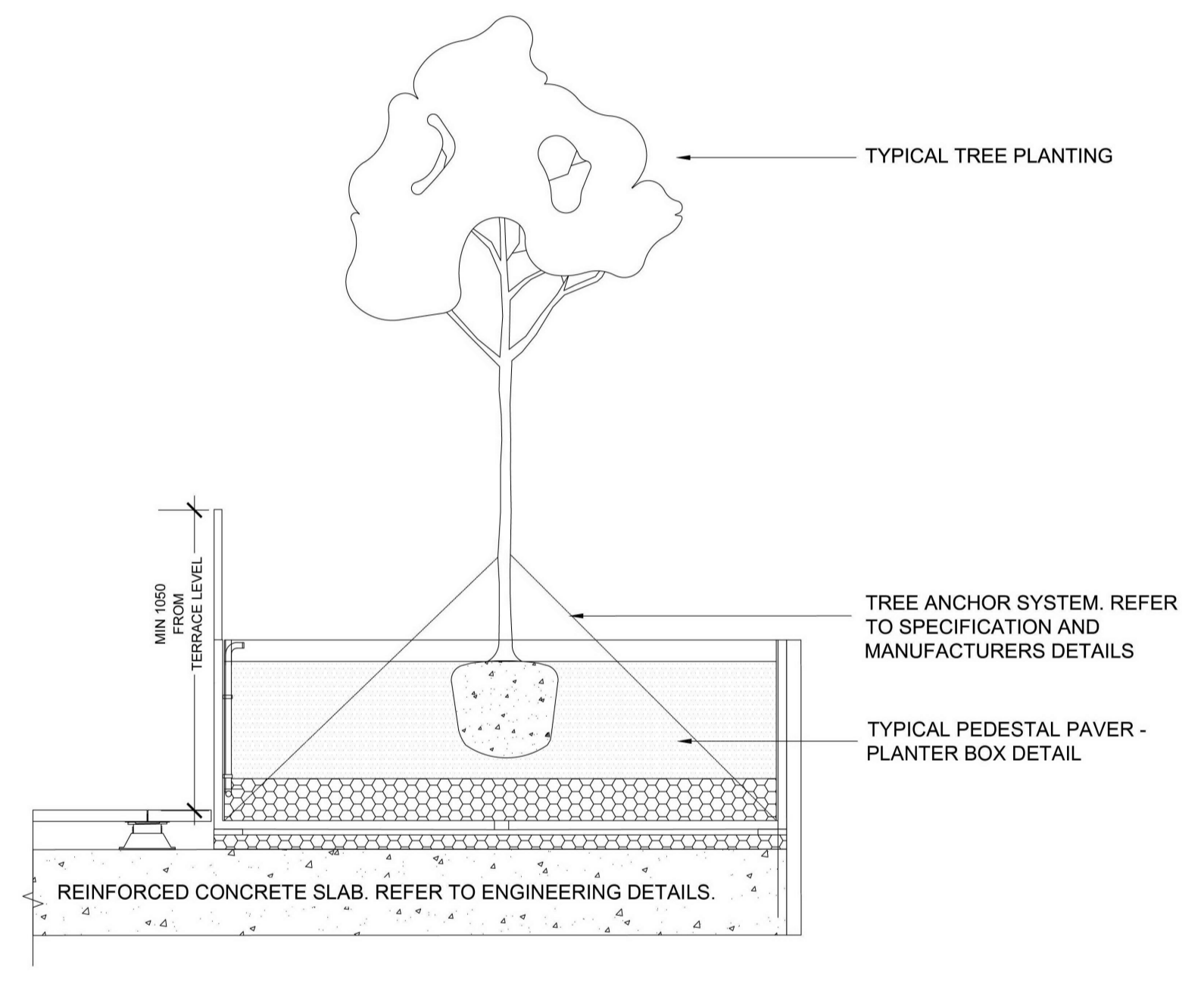
- P1 : PAVEMENT PROFILE 1 - NATURAL STONE PAVER ON PEDESTAL SYSTEM REFER DETAIL
- P2: PAVEMENT PROFILE 2 NATURAL STONE PAVER FUTURE DETAIL
- G1: GARDEN BED PROFILE 1 MULCHED GARDEN BED IN FEATURE POT. REFER DETAIL
- G2: GARDEN BED PROFILE 2 PLANTED, MULCHED AND IRRIGATED GARDEN BED REFER DETAIL

FURNITURE LEGEND

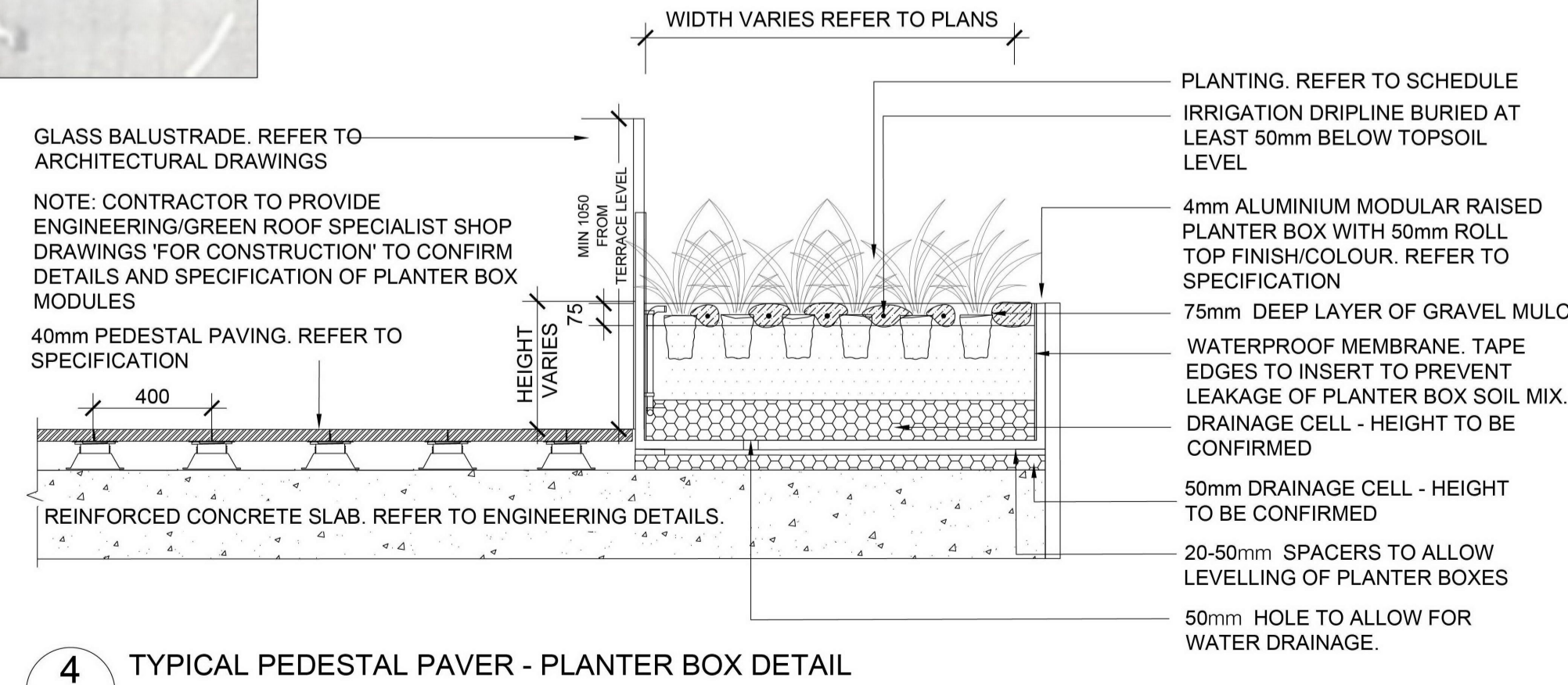
- F1: FURNITURE TYPE 1 800mm PLANTER BOX MEASURED FROM FFL REFER DETAIL
- F2: FURNITURE TYPE 2 MODULAR PLANTER BOX WITH BUILT-IN SEATING FUTURE DETAIL
- F3: FURNITURE TYPE 3 - IN-BUILT BENCH SEAT 450mm HEIGHT - HARDWOOD TIMBER FINISH FUTURE DETAIL
- F4: FURNITURE TYPE 4 - PROPOSED TREE GRATE FUTURE DETAIL



ADVERTISED COPY - CITY OF MONASH  
 This copied document is made available for the sole purpose of enabling its consideration and review as part of a planning process under the Planning and Environment Act.  
 The document must not be used for any purpose which may breach copyright.

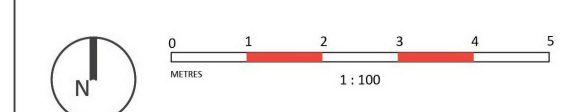


**2** SEMI-ADVANCED TREE IN PLANTER BOX DETAIL  
SECTION  
1:20



**4** TYPICAL PEDESTAL PAVER - PLANTER BOX DETAIL  
SECTION  
1:20

**409 CLAYTON ROAD, CLAYTON VIC**  
 LANDSCAPE CONCEPT PLAN- LEVEL 4



**PROJECT INFORMATION**  
 Project No: 13934  
 Drawing No: LCP\_003  
 Revision No: A  
 Date: 15.08.23  
 Director: DA

REVISIONS			
REV	DESCRIPTION	DWN	CHK
A	FOR APPROVAL	GA	DA

**DISCLAIMER**  
 Copyright by Human Habitats Pty Ltd. This drawing or parts thereof may not be reproduced for any purpose or used for another project without the express written consent of Human Habitats other than for the purposes of actual ordering, supply, installation, or construction. This drawing must be read in conjunction with all relevant contracts, schedules, specifications, drawings and any other issued written instructions. Do not scale from drawings. Written figured dimensions take preference to scaled dimensions and must be verified on site prior to proceeding with any work. All discrepancies must be referred to the superintendent for a written decision prior to ordering, supply or installation. Human Habitats must be notified in writing of any discrepancies.



PLANTING LEGEND

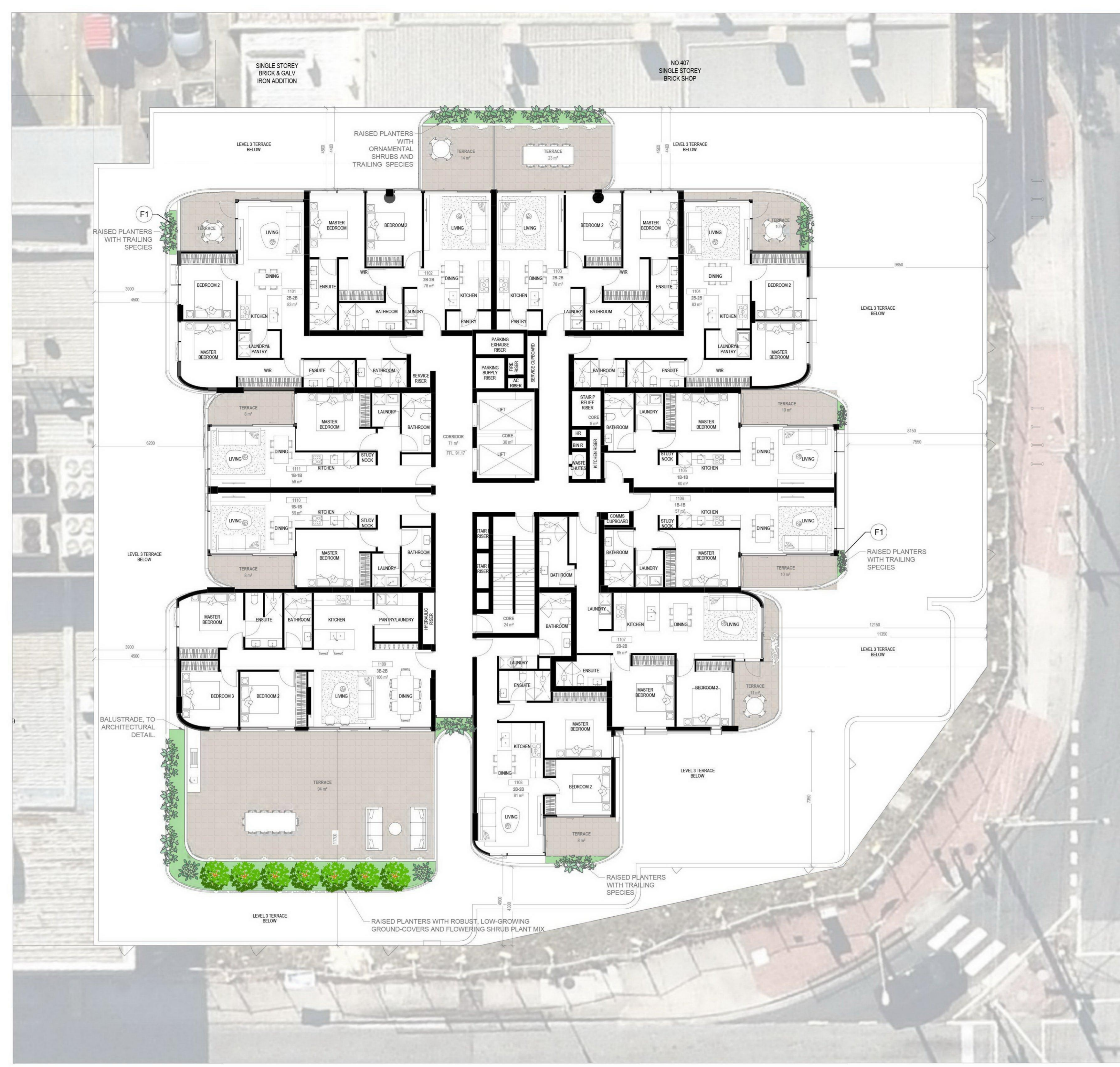
- PROPOSED TREE IN MULCHED AND IRRIGATED RAISED PLANTER BOX REFER DETAIL
- PROPOSED SHRUBS, TUFTING AND GROUNDCOVERS IN MULCHED AND IRRIGATED RAISED PLANTER BOX REFER DETAIL

FINISHES LEGEND

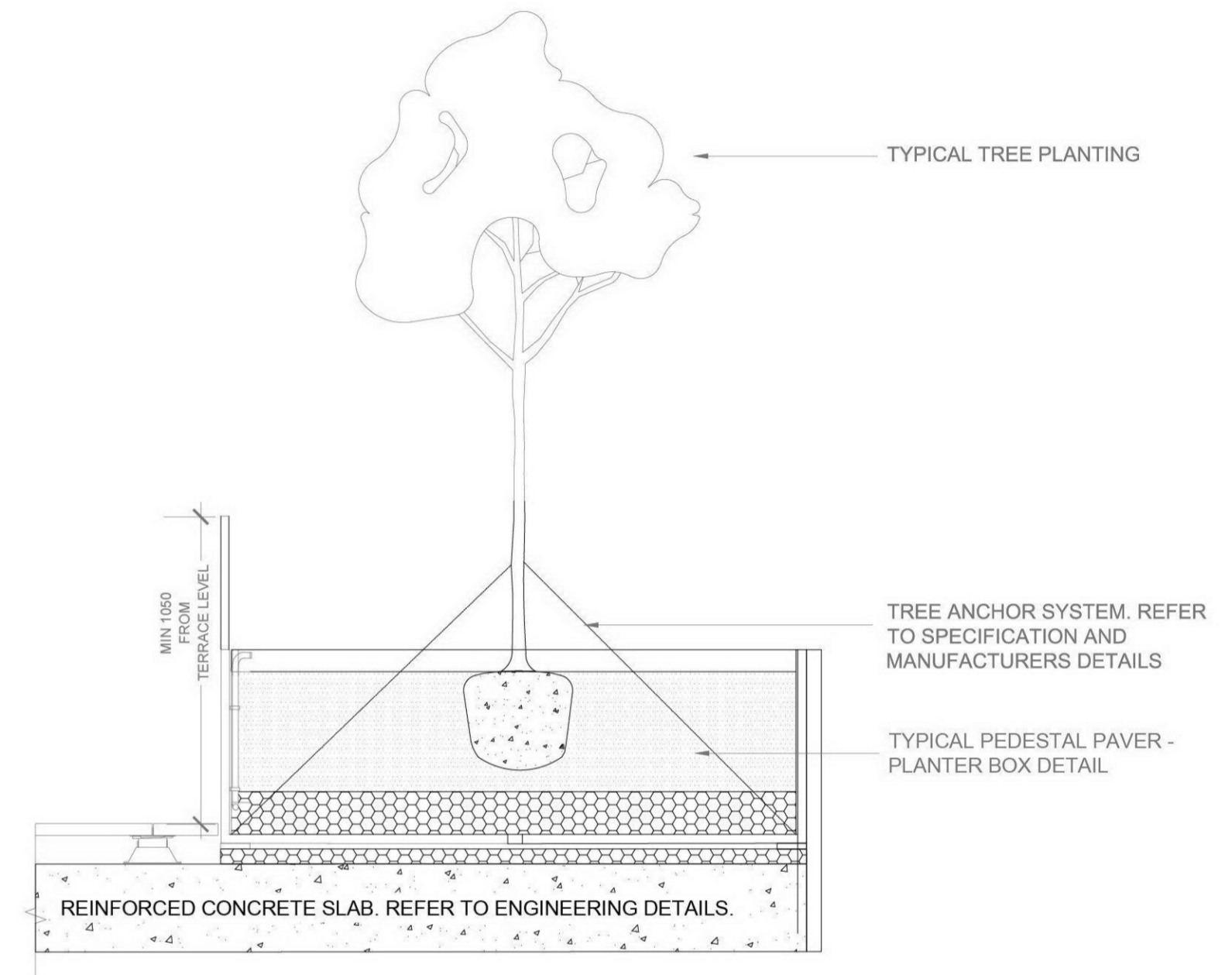
- P1 : PAVEMENT PROFILE 1 - NATURAL STONE PAVER ON PEDESTAL SYSTEM REFER DETAIL
- P2: PAVEMENT PROFILE 2 NATURAL STONE PAVER FUTURE DETAIL
- G1: GARDEN BED PROFILE 1 MULCHED GARDEN BED IN FEATURE POT. REFER DETAIL.
- G2: GARDEN BED PROFILE 2 PLANTED, MULCHED AND IRRIGATED GARDEN BED REFER DETAIL

FURNITURE LEGEND

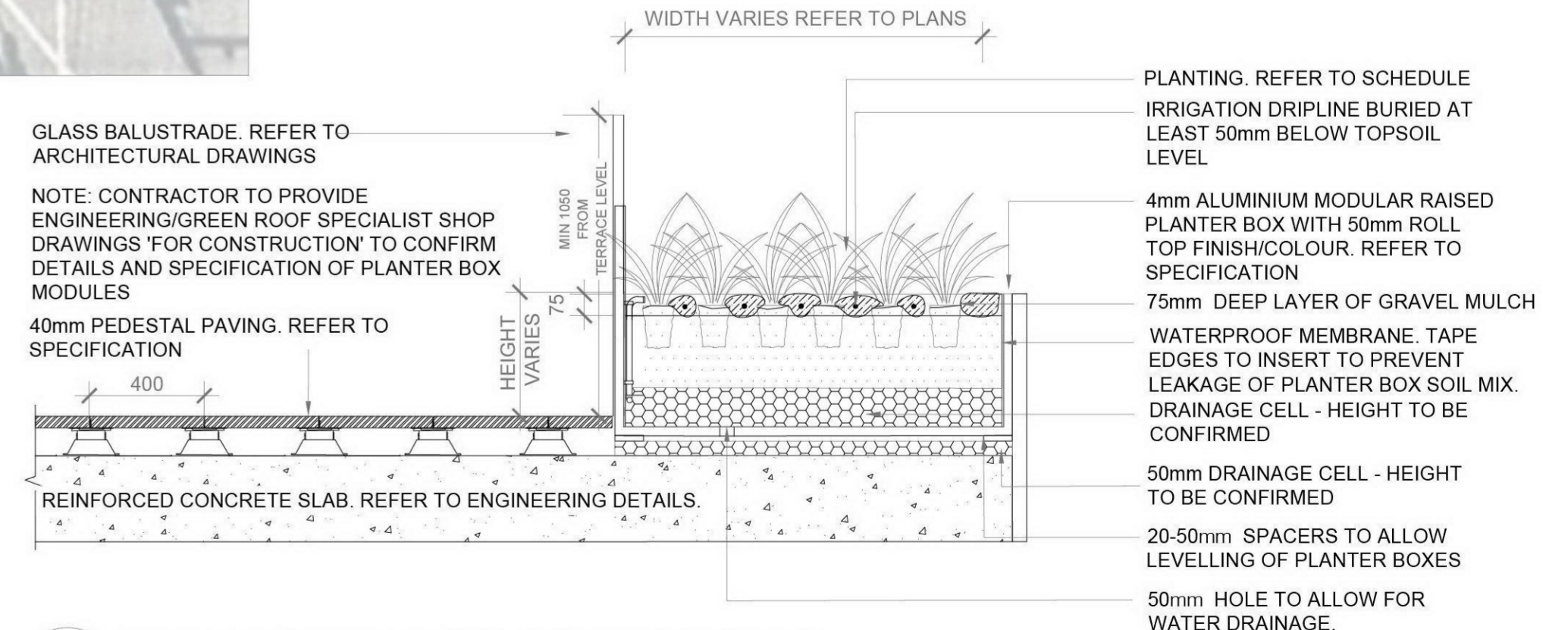
- F1: FURNITURE TYPE 1 800mm PLANTER BOX MEASURED FROM FFL REFER DETAIL.
- F2: FURNITURE TYPE 2 MODULAR PLANTER BOX WITH BUILT-IN SEATING FUTURE DETAIL
- F3: FURNITURE TYPE 3 - IN-BUILT BENCH SEAT 450mm HEIGHT - HARDWOOD TIMBER FINISH FUTURE DETAIL
- F4: FURNITURE TYPE 4 - PROPOSED TREE GRATE FUTURE DETAIL



**ADVERTISED COPY - CITY OF MONASH**  
 This copied document is made available for the sole purpose of enabling its consideration and review as part of a planning process under the Planning and Environment Act. The document must not be used for any purpose which may breach copyright.



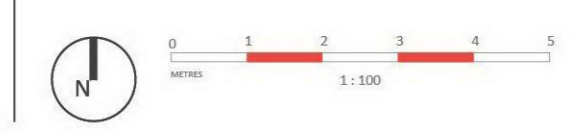
**2 SEMI-ADVANCED TREE IN PLANTER BOX DETAIL**  
SECTION  
1:20



**4 TYPICAL PEDESTAL PAVER - PLANTER BOX DETAIL**  
SECTION  
1:20

2027 6566 1 124  
 HUMAN HABITATS PTY LTD  
 10/110 CLAYTON ROAD  
 CLAYTON VIC 3168  
 PH: 03 9594 1234  
 WWW.HUMANHABITATS.COM.AU

**409 CLAYTON ROAD, CLAYTON VIC**  
 LANDSCAPE CONCEPT PLAN- LEVEL 11



**PROJECT INFORMATION**  
 Project No: 13934  
 Drawing No: LCP\_004  
 Revision No: A  
 Date: 15.08.23  
 Director: DA

REVISIONS		MA	GA	DATE
A	FOR APPROVAL			15.08.23
REV	DESCRIPTION	DWN	CHK	DATE

**DISCLAIMER**  
 Copyright by Human Habitats Pty Ltd. This drawing or parts thereof may not be reproduced for any purpose or used for another project without the express written consent of Human Habitats other than for the purposes of actual ordering, supply, installation, or construction. This drawing must be read in conjunction with all relevant contracts, schedules, specifications, drawings and any other issued written instructions. Do not scale from drawings. Written figured dimensions take preference to scaled dimensions and must be verified on site prior to proceeding with any work. All discrepancies must be referred to the superintendent for a written decision prior to ordering, supply or installation. Human Habitats must be notified in writing of any discrepancies.

PLANTING LEGEND

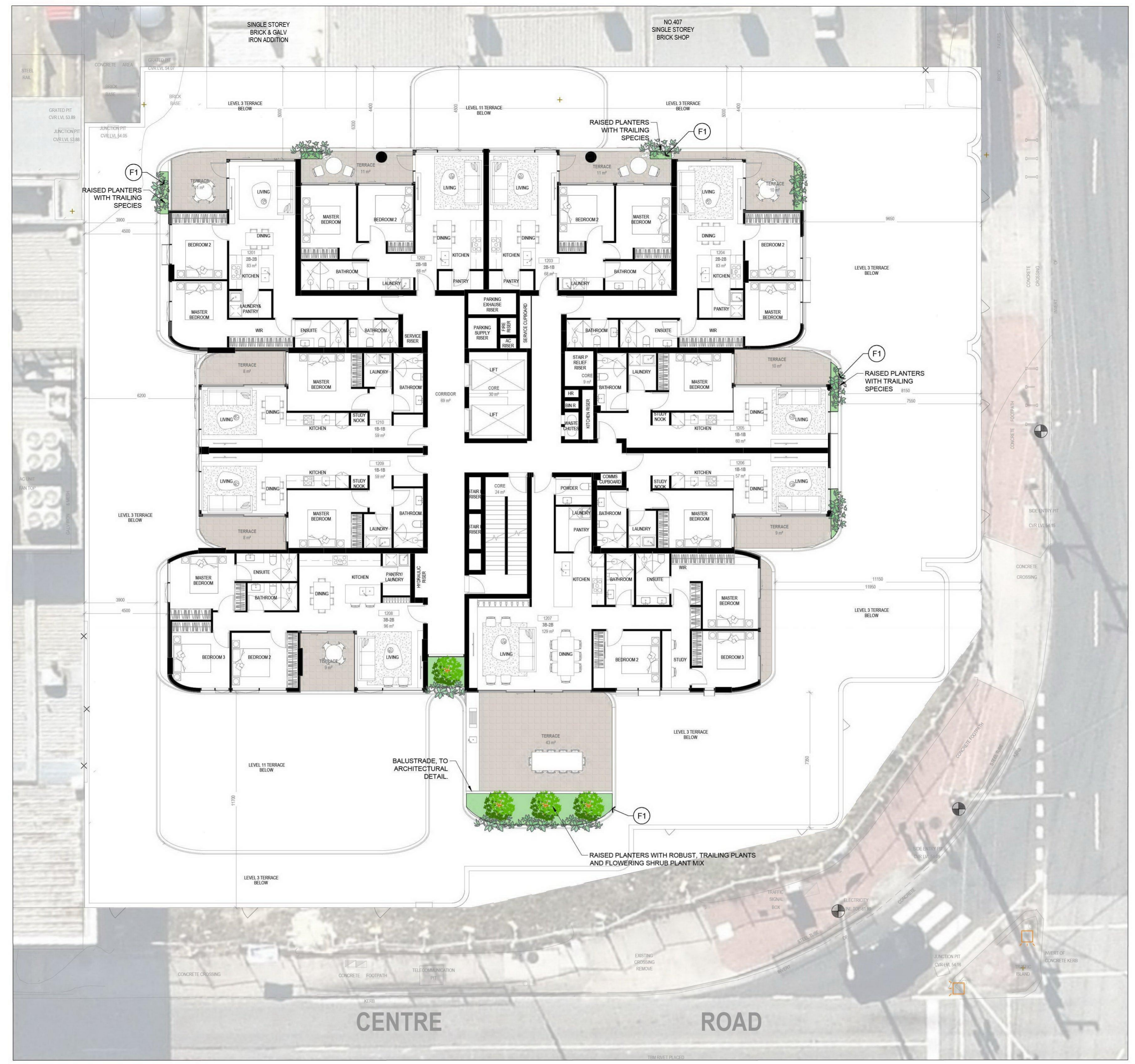
- PROPOSED TREE IN MULCHED AND IRRIGATED RAISED PLANTER BOX REFER DETAIL
- PROPOSED SHRUBS, TUFTING AND GROUNDCOVERS IN MULCHED AND IRRIGATED RAISED PLANTER BOX REFER DETAIL

FINISHES LEGEND

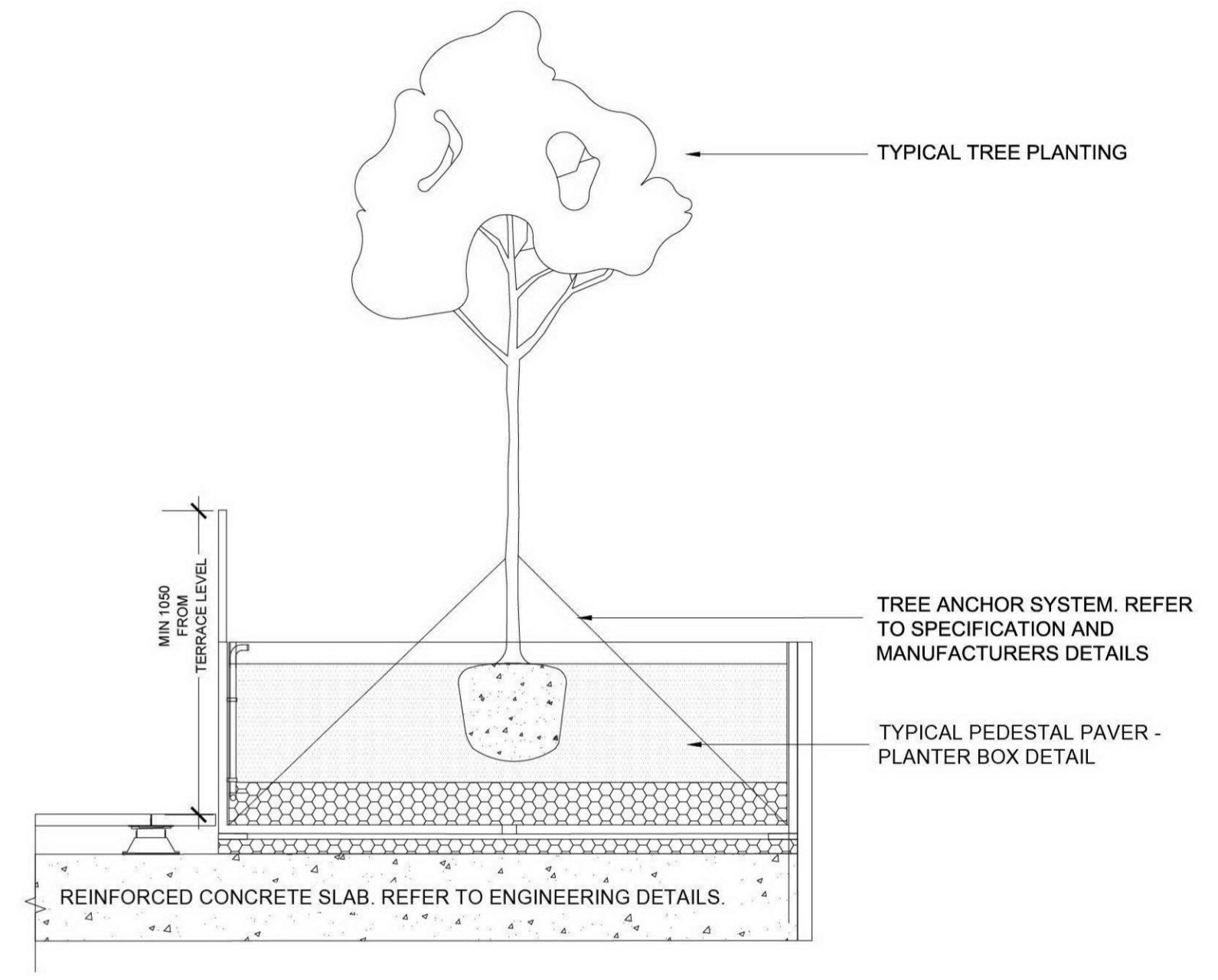
- P1 : PAVEMENT PROFILE 1 - NATURAL STONE PAVER ON PEDESTAL SYSTEM REFER DETAIL
- P2: PAVEMENT PROFILE 2 NATURAL STONE PAVER FUTURE DETAIL
- G1: GARDEN BED PROFILE 1 MULCHED GARDEN BED IN FEATURE POT. REFER DETAIL
- G2: GARDEN BED PROFILE 2 PLANTED, MULCHED AND IRRIGATED GARDEN BED REFER DETAIL

FURNITURE LEGEND

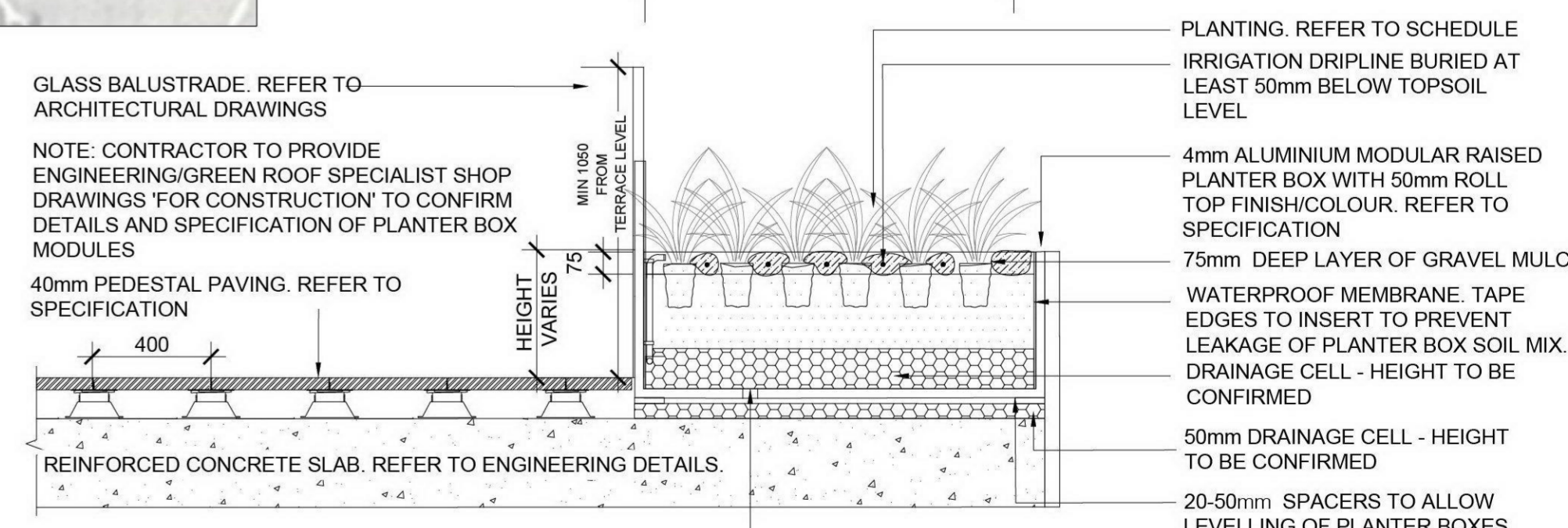
- F1: FURNITURE TYPE 1 800mm PLANTER BOX MEASURED FROM FFL REFER DETAIL
- F2: FURNITURE TYPE 2 MODULAR PLANTER BOX WITH BUILT-IN SEATING FUTURE DETAIL
- F3: FURNITURE TYPE 3 - IN-BUILT BENCH SEAT 450mm HEIGHT - HARDWOOD TIMBER FINISH FUTURE DETAIL
- F4: FURNITURE TYPE 4 - PROPOSED TREE GRATE FUTURE DETAIL



**ADVERTISED COPY - CITY OF MONASH**  
 This copied document is made available for the sole purpose of enabling its consideration and review as part of a planning process under the Planning and Environment Act. The document must not be used for any purpose which may breach copyright.



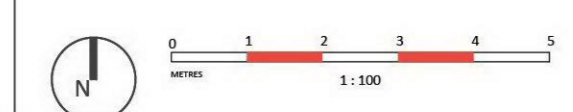
**2 SEMI-ADVANCED TREE IN PLANTER BOX DETAIL**  
SECTION 1:20



**4 TYPICAL PEDESTAL PAVER - PLANTER BOX DETAIL**  
SECTION 1:20



**409 CLAYTON ROAD, CLAYTON VIC**  
 LANDSCAPE CONCEPT PLAN- LEVEL 12



**PROJECT INFORMATION**  
 Project No: 13934  
 Drawing No: LCP\_005  
 Revision No: A  
 Date: 15.08.23  
 Director: DA

**REVISIONS**

REV	DESCRIPTION	DWN	CHK	DATE
A	FOR APPROVAL	MA	GA	15.08.23

**DISCLAIMER**  
 Copyright by Human Habitats Pty Ltd. This drawing or parts thereof may not be reproduced for any purpose or used for another project without the express written consent of Human Habitats other than for the purposes of actual ordering, supply, installation, or construction. This drawing must be read in conjunction with all relevant contracts, schedules, specifications, drawings and any other issued written instructions. Do not scale from drawings. Written figured dimensions take preference to scaled dimensions and must be verified on site prior to proceeding with any work. All discrepancies must be referred to the superintendent for a written decision prior to ordering, supply or installation. Human Habitats must be notified in writing of any discrepancies.

PLANTING LEGEND

- PROPOSED TREE IN MULCHED AND IRRIGATED RAISED PLANTER BOX REFER DETAIL
- PROPOSED SHRUBS, TUFTING AND GROUNDCOVERS IN MULCHED AND IRRIGATED RAISED PLANTER BOX REFER DETAIL

FINISHES LEGEND

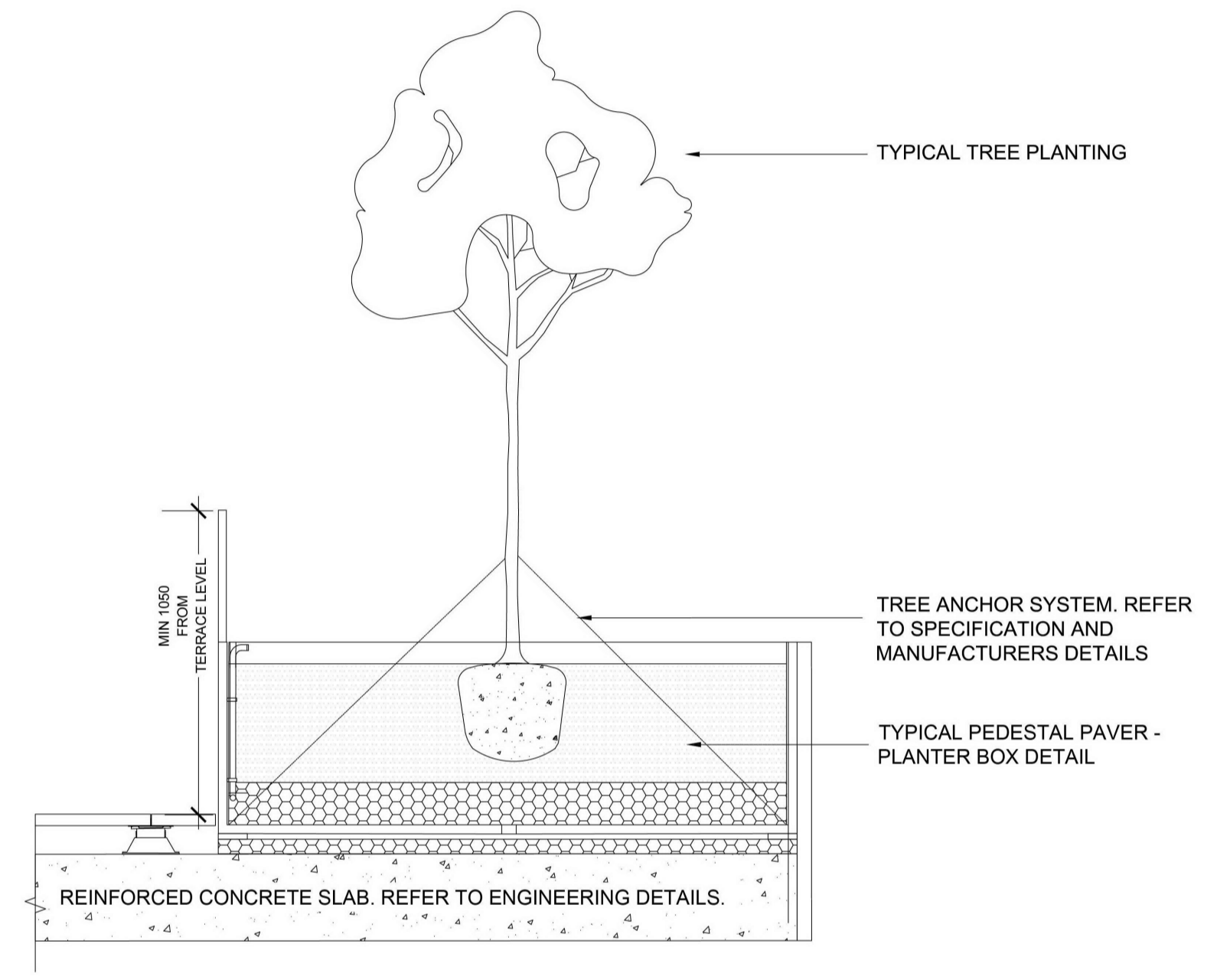
- P1 : PAVEMENT PROFILE 1 - NATURAL STONE PAVER ON PEDESTAL SYSTEM REFER DETAIL
- P2: PAVEMENT PROFILE 2 NATURAL STONE PAVER FUTURE DETAIL
- G1: GARDEN BED PROFILE 1 MULCHED GARDEN BED IN FEATURE POT. REFER DETAIL
- G2: GARDEN BED PROFILE 2 PLANTED, MULCHED AND IRRIGATED GARDEN BED REFER DETAIL

FURNITURE LEGEND

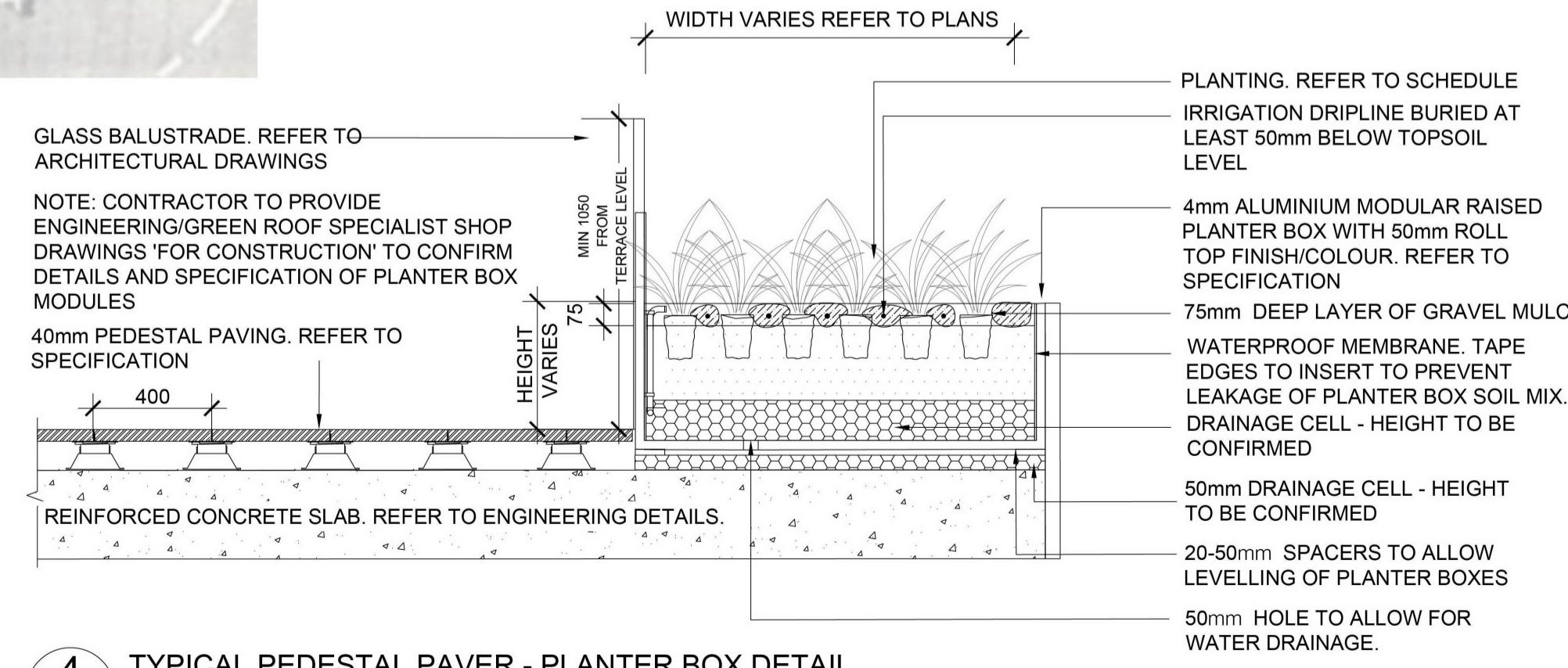
- F1: FURNITURE TYPE 1 800mm PLANTER BOX MEASURED FROM FFL REFER DETAIL
- F2: FURNITURE TYPE 2 MODULAR PLANTER BOX WITH BUILT-IN SEATING FUTURE DETAIL
- F3: FURNITURE TYPE 3 - IN-BUILT BENCH SEAT 450mm HEIGHT - HARDWOOD TIMBER FINISH FUTURE DETAIL
- F4: FURNITURE TYPE 4 - PROPOSED TREE GRATE FUTURE DETAIL



ADVERTISED COPY - CITY OF MONASH  
 This copied document is made available for the sole purpose of enabling its consideration and review as part of a planning process under the Planning and Environment Act. The document must not be used for any purpose which may breach copyright.



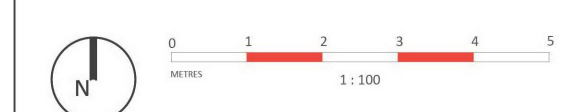
**2** SEMI-ADVANCED TREE IN PLANTER BOX DETAIL  
SECTION  
1:20



**4** TYPICAL PEDESTAL PAVER - PLANTER BOX DETAIL  
SECTION  
1:20



**409 CLAYTON ROAD, CLAYTON VIC**  
LANDSCAPE CONCEPT PLAN-LEVEL 14



**PROJECT INFORMATION**  
Project No: 13934  
Drawing No: LCP\_006  
Revision No: A  
Date: 15.08.23  
Director: DA

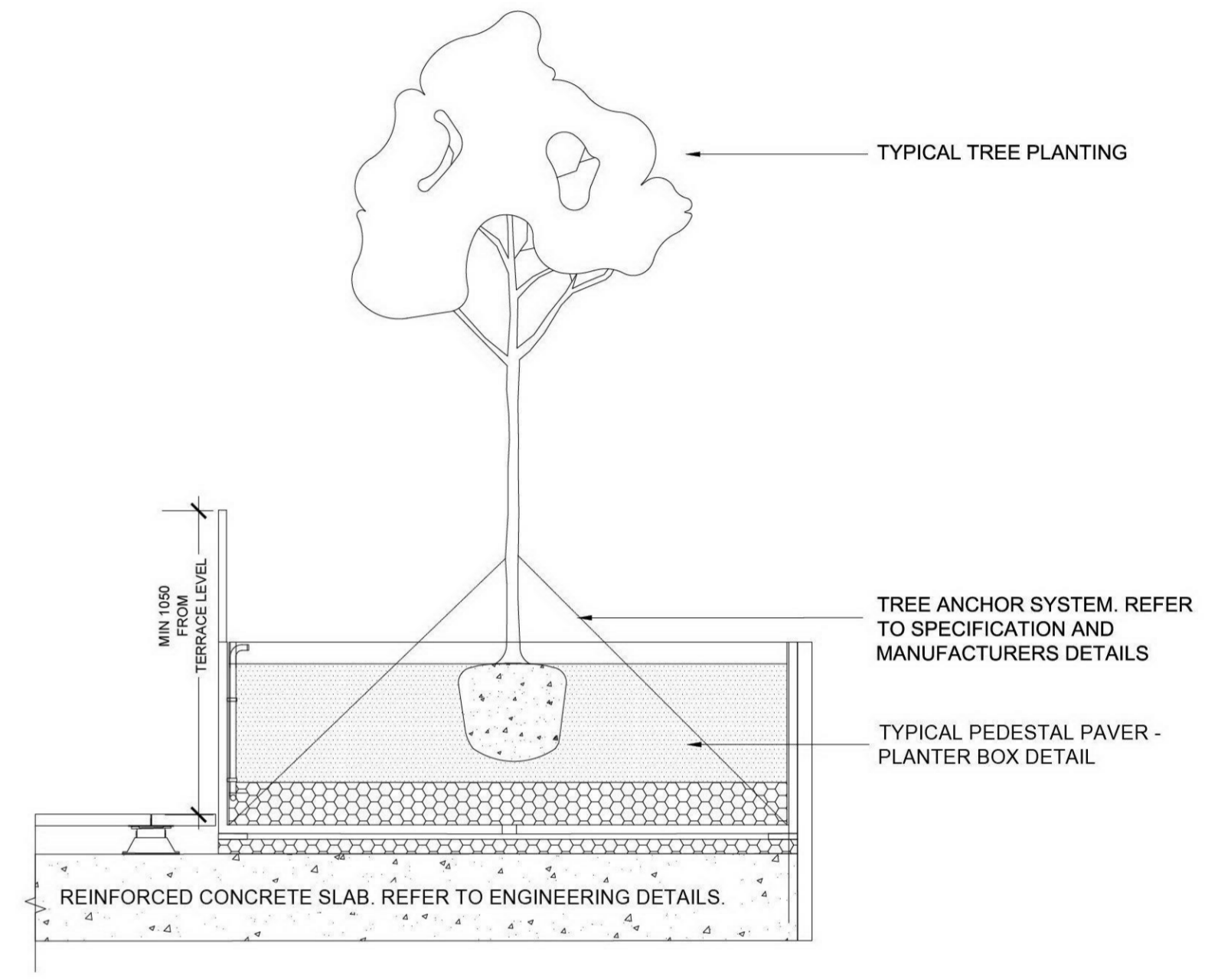
REVISIONS				
REV	DESCRIPTION	DWN	CHK	DATE
A	FOR APPROVAL	MA	GA	15.08.23

**DISCLAIMER**  
Copyright by Human Habitats Pty Ltd. This drawing or parts thereof may not be reproduced for any purpose or used for another project without the express written consent of Human Habitats other than for the purposes of actual ordering, supply, installation, or construction. This drawing must be read in conjunction with all relevant contracts, schedules, specifications, drawings and any other issued written instructions. Do not scale from drawings. Written figured dimensions take preference to scaled dimensions and must be verified on site prior to proceeding with any work. All discrepancies must be referred to the superintendent for a written decision prior to ordering, supply or installation. Human Habitats must be notified in writing of any discrepancies.

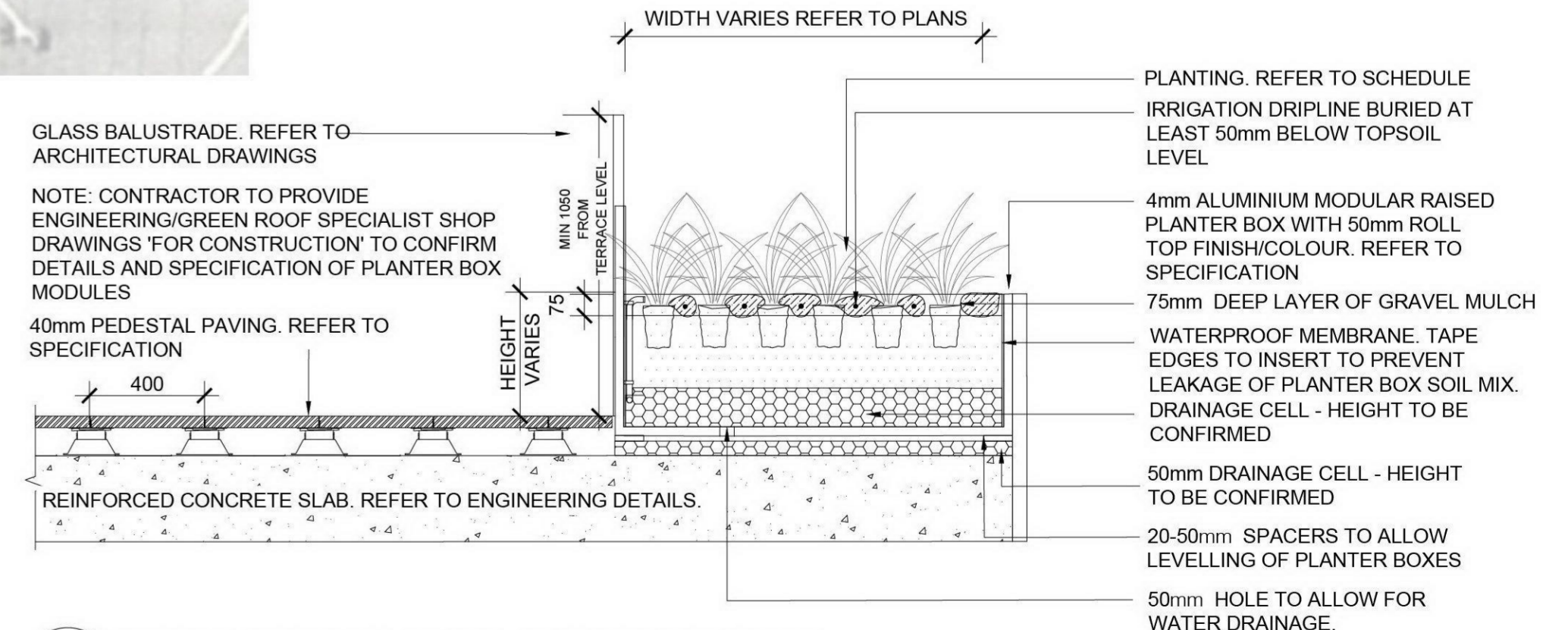
- PLANTING LEGEND**
- PROPOSED TREE IN MULCHED AND IRRIGATED RAISED PLANTER BOX REFER DETAIL
  - PROPOSED SHRUBS, TUFTING AND GROUNDCOVERS IN MULCHED AND IRRIGATED RAISED PLANTER BOX REFER DETAIL
- FINISHES LEGEND**
- P1: PAVEMENT PROFILE 1 - NATURAL STONE PAVER ON PEDESTAL SYSTEM REFER DETAIL
  - P2: PAVEMENT PROFILE 2 - NATURAL STONE PAVER FUTURE DETAIL
  - G1: GARDEN BED PROFILE 1 - MULCHED GARDEN BED IN FEATURE POT, REFER DETAIL
  - G2: GARDEN BED PROFILE 2 - PLANTED, MULCHED AND IRRIGATED GARDEN BED REFER DETAIL
- FURNITURE LEGEND**
- F1: FURNITURE TYPE 1 - 800mm PLANTER BOX MEASURED FROM FFL REFER DETAIL
  - F2: FURNITURE TYPE 2 - MODULAR PLANTER BOX WITH BUILT-IN SEATING FUTURE DETAIL
  - F3: FURNITURE TYPE 3 - IN-BUILT BENCH SEAT 450mm HEIGHT - HARDWOOD TIMBER FINISH FUTURE DETAIL
  - F4: FURNITURE TYPE 4 - PROPOSED TREE GRATE FUTURE DETAIL



**ADVERTISED COPY - CITY OF MONASH**  
 This copied document is made available for the sole purpose of enabling its consideration and review as part of a planning process under the Planning and Environment Act. The document must not be used for any purpose which may breach copyright.



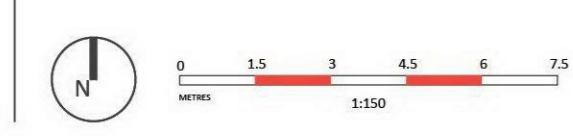
**2 SEMI-ADVANCED TREE IN PLANTER BOX DETAIL**  
SECTION 1:20



**4 TYPICAL PEDESTAL PAVER - PLANTER BOX DETAIL**  
SECTION 1:20



**409 CLAYTON ROAD, CLAYTON VIC**  
LANDSCAPE CONCEPT PLAN - LEVEL 15



**PROJECT INFORMATION**  
 Project No: 13934  
 Drawing No: LCP\_007  
 Revision No: A  
 Date: 15.08.23  
 Director: DA

REVISIONS		MA	GA	DATE
REV	DESCRIPTION	DWN	CHK	DATE
A	FOR APPROVAL			15.08.23

**DISCLAIMER**  
 Copyright by Human Habitats Pty Ltd. This drawing or parts thereof may not be reproduced for any purpose or used for another project without the express written consent of Human Habitats other than for the purposes of actual ordering, supply, installation, or construction. This drawing must be read in conjunction with all relevant contracts, schedules, specifications, drawings and any other issued written instructions. Do not scale from drawings. Written figured dimensions take preference to scaled dimensions and must be verified on site prior to proceeding with any work. All discrepancies must be referred to the superintendent for a written decision prior to ordering, supply or installation. Human Habitats must be notified in writing of any discrepancies.

PLANTING LEGEND

PROPOSED TREE IN MULCHED AND IRRIGATED RAISED PLANTER BOX REFER DETAIL.

PROPOSED SHRUBS, TUFTING AND GROUNDCOVERS IN MULCHED AND IRRIGATED RAISED PLANTER BOX REFER DETAIL.

FINISHES LEGEND

P1: PAVEMENT PROFILE 1 - NATURAL STONE PAVER ON PEDESTAL SYSTEM REFER DETAIL.

P2: PAVEMENT PROFILE 2 NATURAL STONE PAVER FUTURE DETAIL.

G1: GARDEN BED PROFILE 1 MULCHED GARDEN BED IN FEATURE POT. REFER DETAIL.

G2: GARDEN BED PROFILE 2 PLANTED, MULCHED AND IRRIGATED GARDEN BED REFER DETAIL.

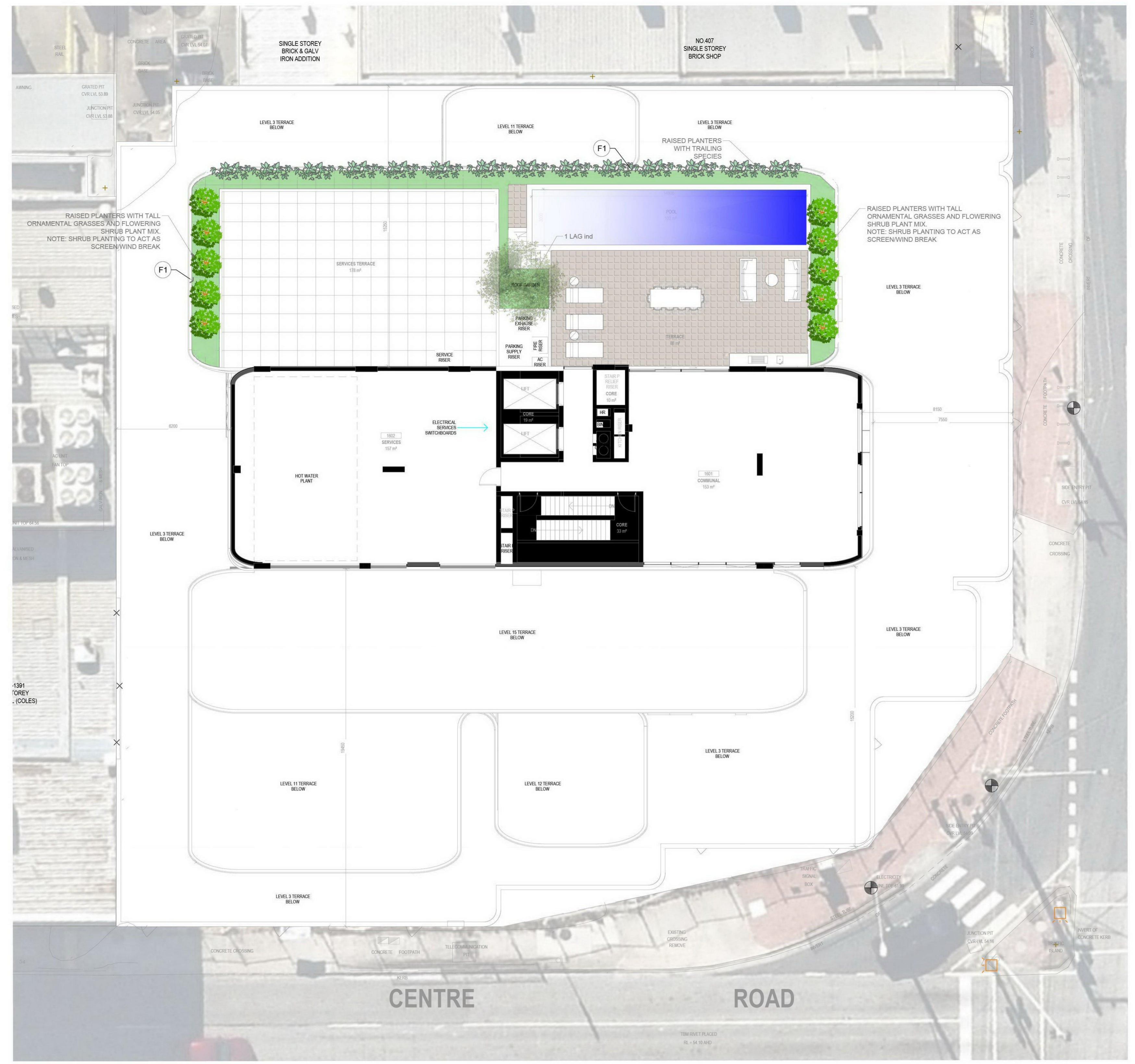
FURNITURE LEGEND

F1: FURNITURE TYPE 1 800mm PLANTER BOX MEASURED FROM FFL REFER DETAIL.

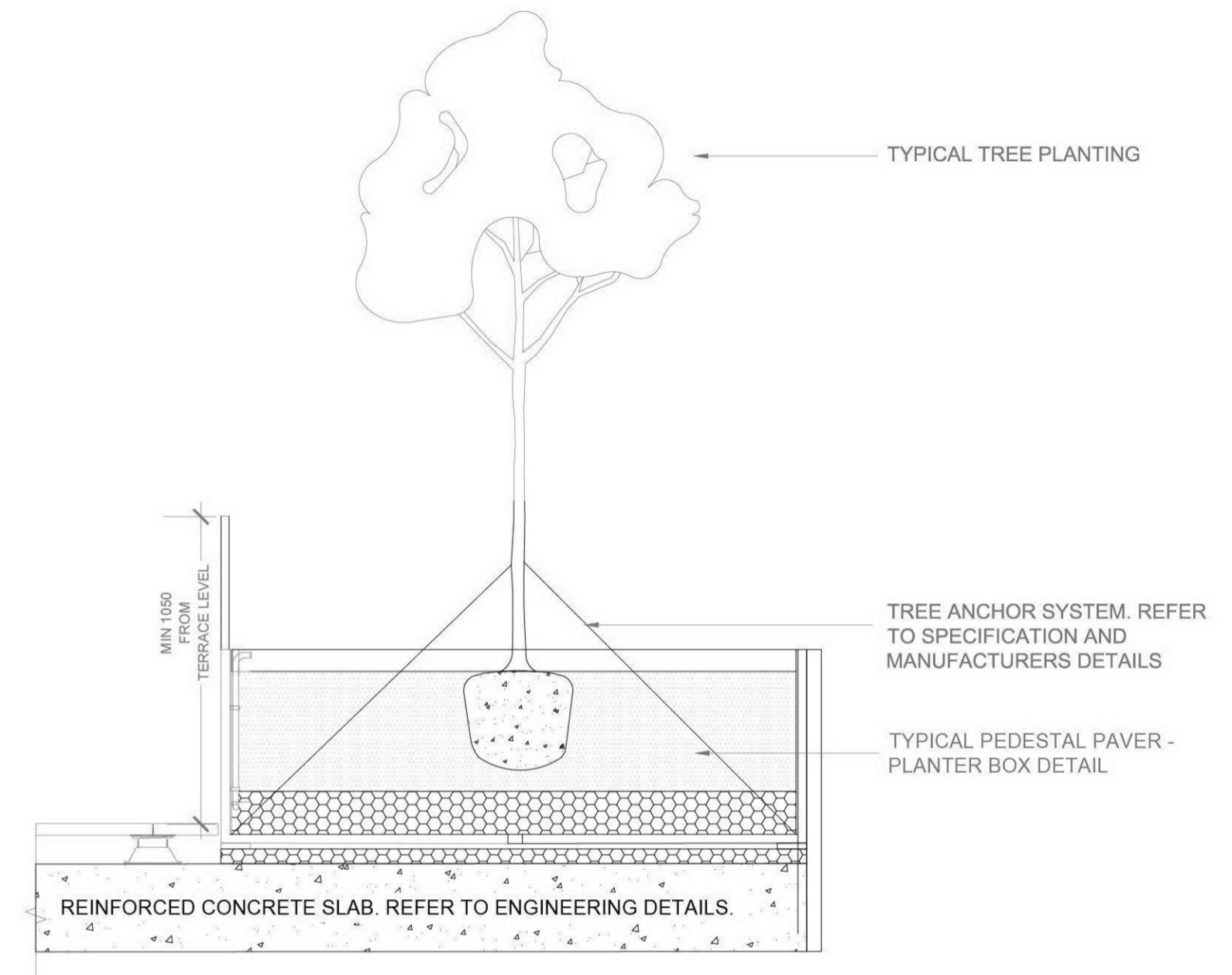
F2: FURNITURE TYPE 2 MODULAR PLANTER BOX WITH BUILT-IN SEATING FUTURE DETAIL.

F3: FURNITURE TYPE 3 - IN-BUILT BENCH SEAT 450mm HEIGHT - HARDWOOD TIMBER FINISH FUTURE DETAIL.

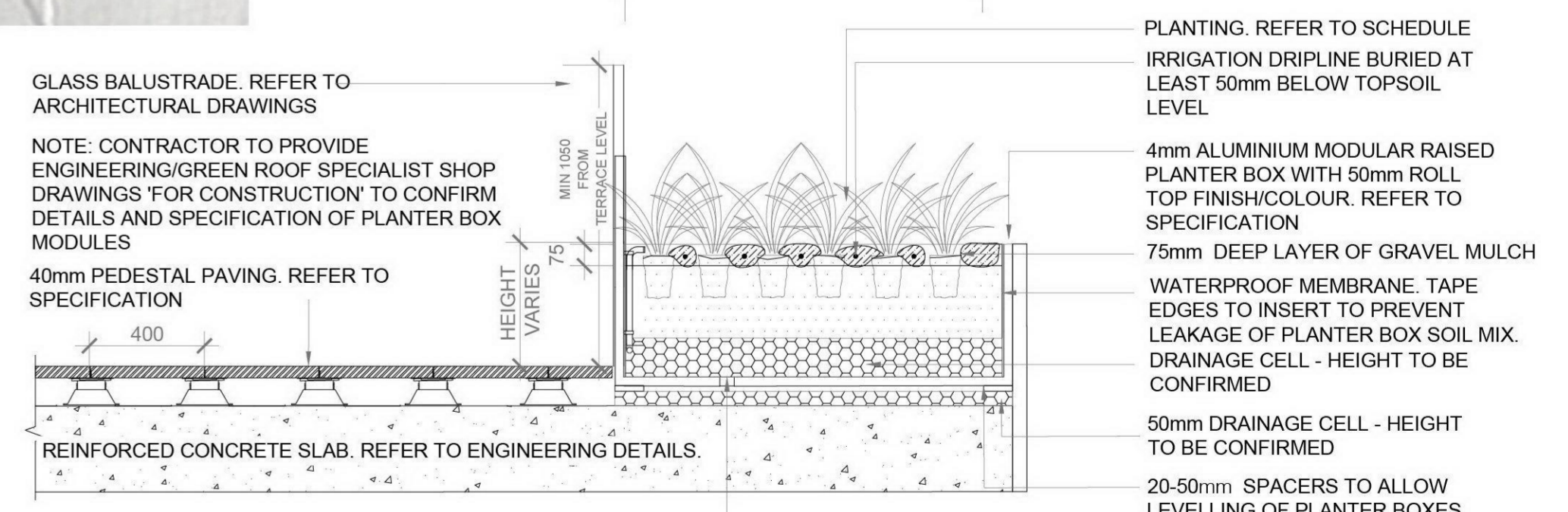
F4: FURNITURE TYPE 4 - PROPOSED TREE GRATE FUTURE DETAIL.



ADVERTISED COPY - CITY OF MONASH  
This copied document is made available for the sole purpose of enabling its consideration and review as part of a planning process under the Planning and Environment Act.  
The document must not be used for any purpose which may breach copyright.



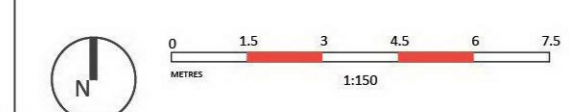
2 SEMI-ADVANCED TREE IN PLANTER BOX DETAIL SECTION 1:20



4 TYPICAL PEDESTAL PAVER - PLANTER BOX DETAIL SECTION 1:20



409 CLAYTON ROAD, CLAYTON VIC LANDSCAPE CONCEPT PLAN - LEVEL 16



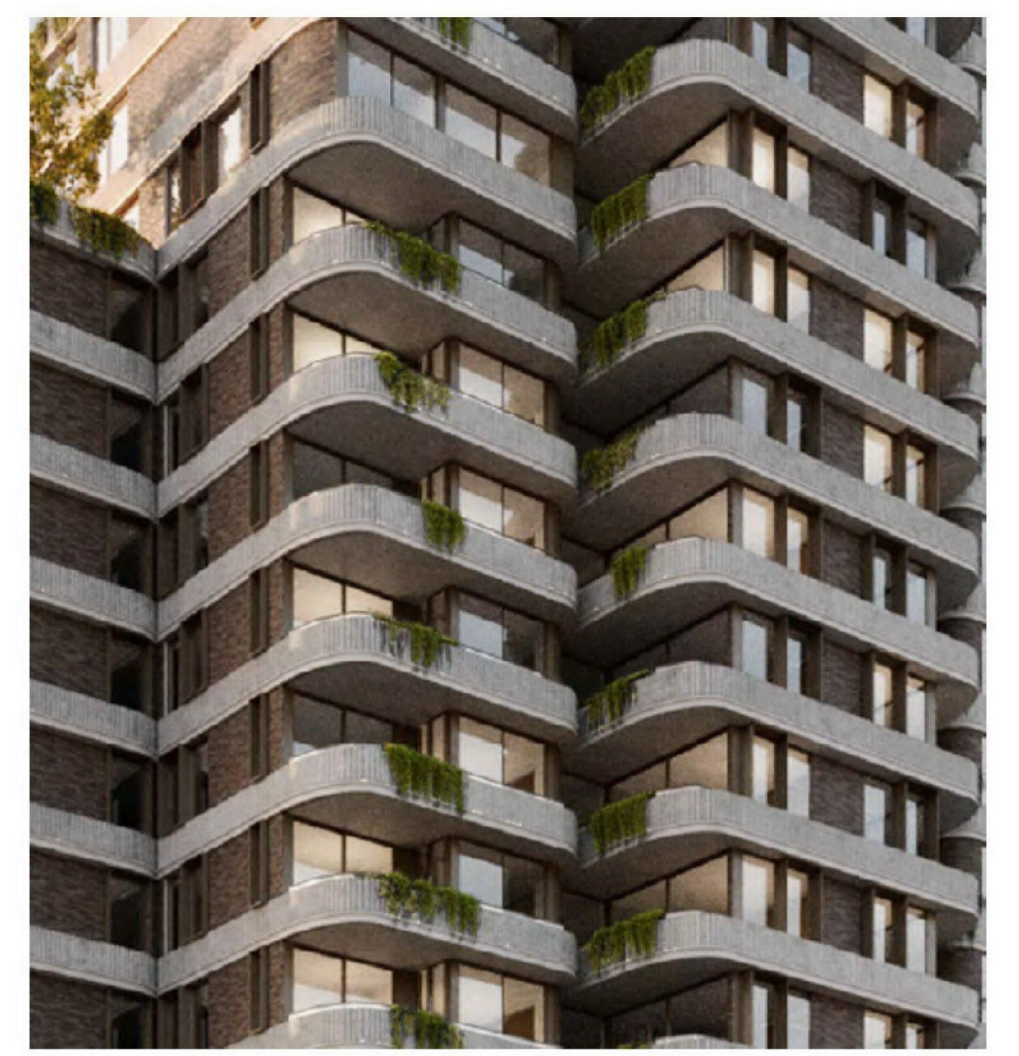
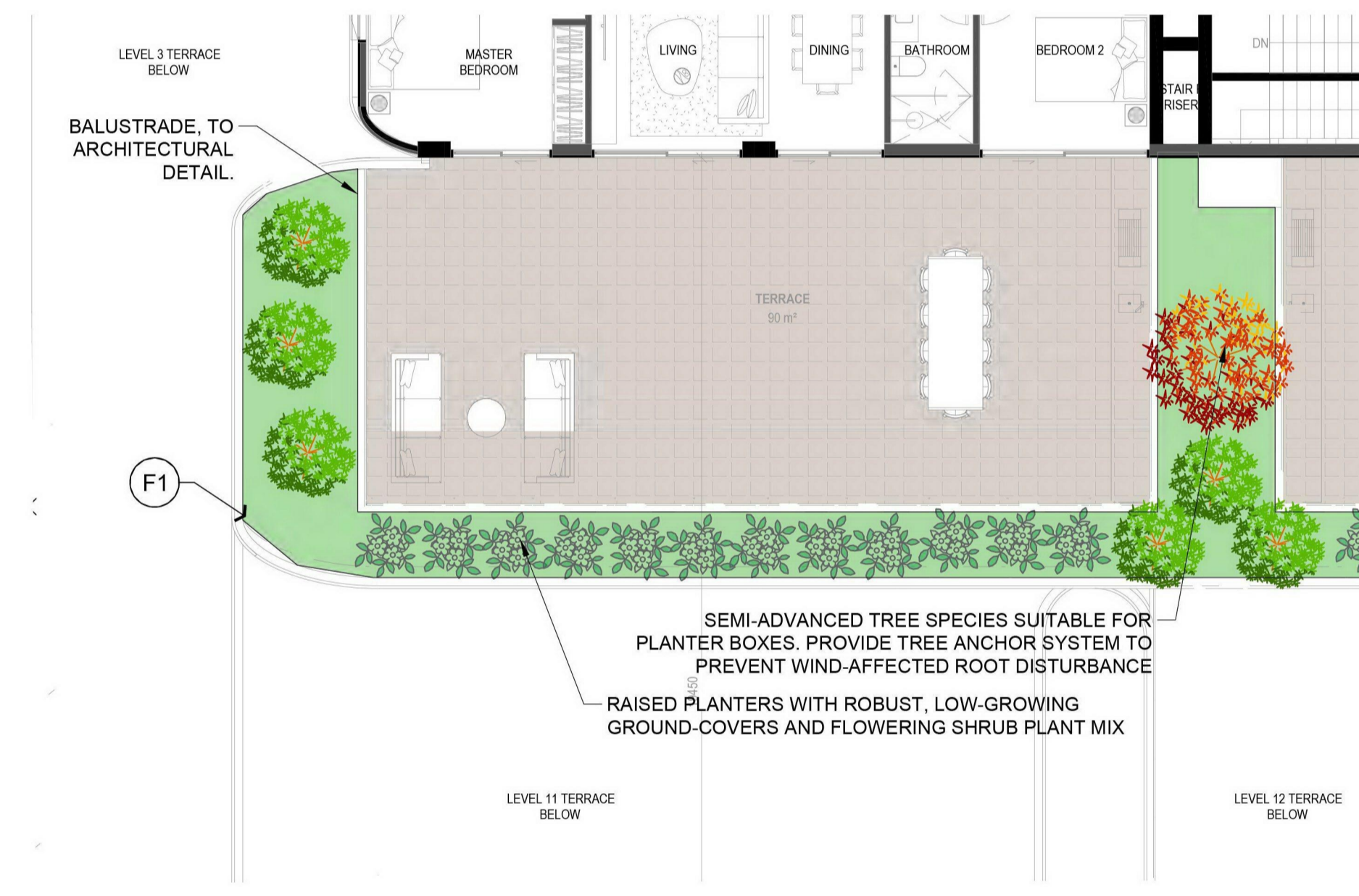
PROJECT INFORMATION  
Project No: 13934  
Drawing No: LCP\_008  
Revision No: A  
Date: 15.08.23  
Director: DA

Table with 5 columns: REV, DESCRIPTION, DWN, CHK, DATE. Row 1: A FOR APPROVAL, MA, GA, 15.08.23

DISCLAIMER  
Copyright by Human Habitats Pty Ltd. This drawing or parts thereof may not be reproduced for any purpose or used for another project without the express written consent of Human Habitats other than for the purposes of actual ordering, supply, installation, or construction. This drawing must be read in conjunction with all relevant contracts, schedules, specifications, drawings and any other issued written instructions. Do not scale from drawings. Written figured dimensions take preference to scaled dimensions and must be verified on site prior to proceeding with any work. All discrepancies must be referred to the superintendent for a written decision prior to ordering, supply or installation. Human Habitats must be notified in writing of any discrepancies.



- PLANTING LEGEND**
- PROPOSED TREE IN MULCHED AND IRRIGATED RAISED PLANTER BOX REFER DETAIL
  - PROPOSED SHRUBS, TUFTING AND GROUNDCOVERS IN MULCHED AND IRRIGATED RAISED PLANTER BOX REFER DETAIL
- FINISHES LEGEND**
- P1 : PAVEMENT PROFILE 1 - NATURAL STONE PAVER ON PEDESTAL SYSTEM REFER DETAIL
  - P2: PAVEMENT PROFILE 2 NATURAL STONE PAVER FUTURE DETAIL
  - G1: GARDEN BED PROFILE 1 MULCHED GARDEN BED IN FEATURE POT. REFER DETAIL
  - G2: GARDEN BED PROFILE 2 PLANTED, MULCHED AND IRRIGATED GARDEN BED REFER DETAIL
- FURNITURE LEGEND**
- F1: FURNITURE TYPE 1 800mm PLANTER BOX MEASURED FROM FFL REFER DETAIL
  - F2: FURNITURE TYPE 2 MODULAR PLANTER BOX WITH BUILT-IN SEATING FUTURE DETAIL
  - F3: FURNITURE TYPE 3 - IN-BUILT BENCH SEAT 450mm HEIGHT - HARDWOOD TIMBER FINISH FUTURE DETAIL
  - F4: FURNITURE TYPE 4 - PROPOSED TREE GRATE FUTURE DETAIL

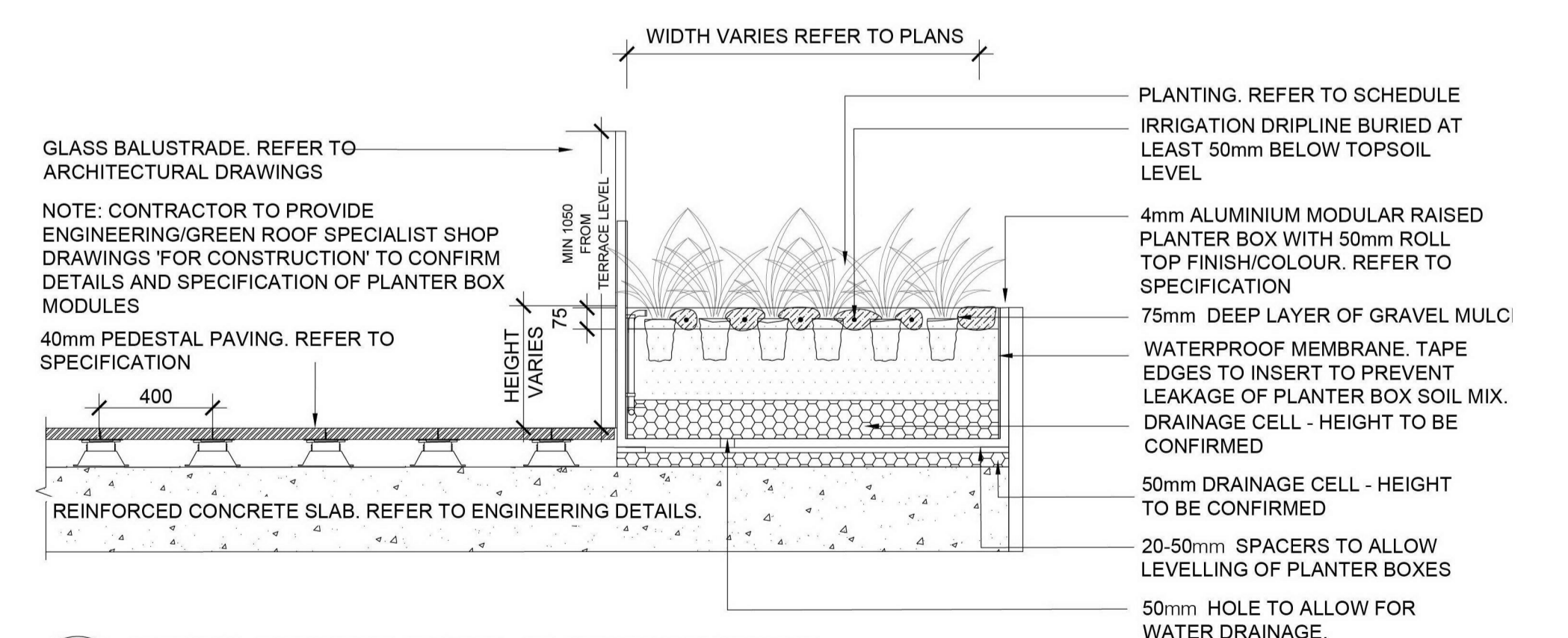


TYPICAL FACADE AND BALCONY PLANTING - LEVELS 4-10  
Trailing plants and hardy ground-covers suitable for challenging climatic conditions.  
Rendered image by Cera Stribley. Refer to Architectural drawings



TYPICAL FACADE AND BALCONY PLANTING - OVERALL BUILDING  
Trailing plants, climbing species and hardy shrubs suitable for challenging climatic conditions. Specimen trees in key locations.  
Rendered image by Cera Stribley. Refer to Architectural drawings

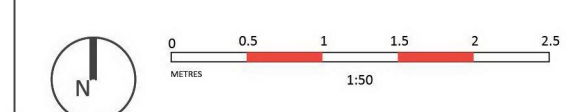
ADVERTISED COPY - CITY OF MONASH  
This copied document is made available for the sole purpose of enabling its consideration and review as part of a planning process under the Planning and Environment Act.  
The document must not be used for any purpose which may breach copyright.



4 TYPICAL PEDESTAL PAVER - PLANTER BOX DETAIL  
SECTION  
1:20



409 CLAYTON ROAD, CLAYTON VIC  
TYPICAL FACADE AND BALCONY PLANTING



**PROJECT INFORMATION**  
Project No: 13934  
Drawing No: LCP\_009  
Revision No: A  
Date: 15.08.23  
Director: DA

REV	DESCRIPTION	DWN	CHK	DATE
A	FOR APPROVAL	MA	GA	15.08.23

**DISCLAIMER**  
Copyright by Human Habitats Pty Ltd. This drawing or parts thereof may not be reproduced for any purpose or used for another project without the express written consent of Human Habitats other than for the purposes of actual ordering, supply, installation, or construction. This drawing must be read in conjunction with all relevant contracts, schedules, specifications, drawings and any other issued written instructions. Do not scale from drawings. Written figured dimensions take preference to scaled dimensions and must be verified on site prior to proceeding with any work. All discrepancies must be referred to the superintendent for a written decision prior to ordering, supply or installation. Human Habitats must be notified in writing of any discrepancies.

MAINTENANCE SCHEDULE

Item	Maintenance Tasks	Typical Frequency			
		Monthly	Bi-monthly	Quarterly	Yearly
1.00	<b>Care of Trees</b>				
1.01	Monitoring Check for any failed, damaged or stolen stock and replace as needed	X			
1.02	Formative pruning				X
1.03	Deadheading / Tip pruning			X	
1.04	General fertilising (as required)			X	
1.05	Staking and tying of any trees (as required)	X			
2.00	<b>Planted Areas</b>				
2.01	Weed matting			X	
2.02	Mulching top-up (as required)		X		
2.03	Leaf removal / rubbish removal		X		
2.04	Check for any failed, damaged or stolen stock and replace as needed	X			
3.00	<b>Fixture &amp; Furniture</b>				
3.01	Check for any damages to planters caused by exterior wears, graffiti and vandalism		X		
3.02	Check for any failed irrigation & drainage points within planted areas		X		
3.03	Timber caring including surface varnishing & oiling for inbuilt seats and tables			X	
4.04	Light fittings inspection for any damages and test of operability			X	
4.00	<b>Pest Management</b>				
4.01	Control Insects and Diseases		X		
<p>Note: - To be read in conjunction with General notes</p>					

GENERAL NOTES

**Soil Preparation:**

Prior to spreading topsoil on garden beds and lawn area, the sub-base is to be thoroughly cleared of all building rubble, weeds and other debris, then ripped to a depth of 200mm and rotary hoed. Incorporate gypsum at the rate of 2.0 kg/square metre throughout all garden beds and lawn areas.

**Planter Soil Specification:**

Planter boxes to be filled with *EcoDynamics Eco Lightweight Planter Mix* or similar approved lightweight specialised Planter specification mix. Full specification here for reference: <https://www.ecodynamics.com.au/products/eco-lightweight-premium-planter-mix-lppm/>

**Garden Beds:**

Evenly spread a minimum depth of 75mm approved clean, finely graded pine wood or Eucalyptus mulch (20mm nom. Size) over topsoil excluding areas specified as pebble/rock mulch. Ensure mulch is kept away from tree and shrub trunks. Ensure mulch finishes 20mm below adjoining finished paving levels.

**Planting:**

All plants are to be true to species, healthy, free from pests disease and stress. At the time of planting fertilise all trees with 30 grams of 'Osmocote' all purpose general fertiliser. Fertilise all other shrubs and groundcovers with 10 grams of 'Osmocote'. Ensure all plants are well watered in at the time of planting and as necessary for the first year until established.

**Levels/drainage/set-out:**

Ground levels within all landscape areas should drain away from buildings towards the paths, pits, kerbs etc. in accordance with all regulations. Ensure all drainage area have contingency overflow clear of buildings.

All dimensions are to be verified on site prior to construction commencing. Any discrepancies are to be immediately reported to the Project Manager for further instruction.

**Irrigation:**

An in-ground sub-soil automated drip irrigation system is to be installed to all garden bed areas and connected to rainwater capture tank in basement for rainwater reuse

IRRIGATION SCHEDULE

Item	Frequency
Filters – mainline	Monthly
Electrical source output (auto system)	Monthly
Controller (automatic systems)	Monthly
Operation – progression - Station to Station.	Weekly
Proper activation of valves	Monthly
Proper timing of stations	6 monthly
Proper time and day readings	Weekly
Exterior appearance	6 monthly
Valve operation	6 monthly
Open, close completely (weeping)	Weekly
Sprinkler operation	Weekly
Rotaries – clogged nozzles	2 monthly
Plant obstructed pattern	2 monthly
Arc coverage	2 monthly
Radius adjustment	2 monthly
Pop-up action	2 monthly
Riser seal leaks	2 monthly
Set to grade	2 monthly
Coverage pressure	2 monthly
Rotational speed	2 monthly
Clogged screens	2 monthly
Head damage	2 monthly
Piping	2 monthly
Leaks – broken or cracked pipe	As Needed
Bad solvent welds, bad threaded	As Needed
Connection	As Needed
Clogged pipe	As Needed

Note:

*Irrigation system program: Adjust to suit the following:*  
 -The precipitation requirements of the individual zones/stations with regard to types of plants.  
 -The infiltration rate of the soil/medium and associated physical factors, seasons, evaporation, exposure, topography and local authority restrictions.  
 -Adjustment or shut down during and after periods of prolonged heavy rain.  
 -Water supply and watering regime of legislation and restrictions applying at the time.  
**Equipment maintenance:**  
 -Check all components for proper operation.  
 -Obtain approval to repair or replace damaged component with parts from the same manufacturer.  
 -Flush any dirt or foreign matter from the system and clear all blockages.  
**System maintenance: Conform to the Irrigation system maintenance schedule.**  
**Programming**  
**Automated systems: Program to coincide with optimum periods of water pressure and water absorption.**  
**Public access: Do not inconvenience persons occupying the site by water spray or by blocking normal pedestrian or traffic flow**  
 - Contractor to provide *Irrigation Maintenance Checklist to the Superintendent monthly throughout the Maintenance period*  
 - Contractor to provide *final Irrigation Maintenance Checklist and detailed handover at end of Maintenance period, to nominated Body Corporate representative*  
 - Nominated Body Corporate to engage specialist Irrigation or Commercial Property Maintenance team for on-going Maintenance requirements

INDICATIVE PLANTING SCHEDULE

Key	Botanical Name	Common Name	Size	Pot / Installation size	Qty.
FRA pen	<i>Fraxinus pennsylvanica 'Aerial'</i>	Aerial' Green Ash	10m x 4m	45 Lt, 2m ht, 20mm cal.	6
<b>TOTAL:</b>					<b>6</b>

Note: All Tree Stock to be used within this development is in accordance to the Australian Standard AS2303 2018 Tree Stock for Landscape Use.

PLANTER BOXES - GROUND LEVEL

Key	Botanical Name	Common Name	Size	Pot / Installation size	Qty.
FIC ben	<i>Ficus benjamina 'Exotica'</i>	Weeping Chinese Banyan	1.5m x 1 m	200mm	TBC
OEN lin	<i>Oenothera lindheimeri 'Summer Breeze'</i>	Gaura 'Summer Breeze'	1.2m x 0.5m	200mm	TBC
ROS off	<i>Rosmarinus officinalis prostratus</i>	Prostrate Rosemary	0.3m x 1 m	200mm	TBC
IND aus	<i>Indigofera australis</i>	Austral Indigo	1.6m x 1.6m	140mm	TBC
LAV gro	<i>Laveandula x intermedia 'Grosso'</i>	Grosso' Lavender	0.8m x 0.5m	200mm	TBC
PHL pur	<i>Phlomis purpurea x crinata</i>	Phlomis 'Lemon Blush'	1.2m x 1 m	200mm	TBC
SAL afr	<i>Salvia africana-lutea</i>	Salvia africana-lutea	1m x 1m	200mm	TBC
SAL ver	<i>Salvia verticillata 'Purple Rain'</i>	Salvia 'Purple Rain'	0.6m x 0.75m	200mm	TBC
<b>TOTAL:</b>					<b>0</b>

PLANTER BOXES - UPPER LEVELS

Key	Botanical Name	Common Name	Size	Pot / Installation size	Qty.
ACE pal	<i>Acer palmatum 'Shindeshojo'</i>	Shindeshojo' Japanese Maple	4m x 3m	45 Lt, 2m ht, 20mm cal.	TBC
CLE arl	<i>Clematis aristata</i>	Mountain Clematis	Climber	200mm	TBC
FIC ben	<i>Ficus benjamina 'Exotica'</i>	Weeping Chinese Banyan	1.5m x 1 m	200mm	TBC
HAR vio	<i>Hardenbergia violacea</i>	Purple Coral-pea	Climber	200mm	TBC
LAG ind	<i>Lagerstroemia indica x fauriei 'Bilox'</i>	Bilox' Crepe Myrtle	7m x 5m	45 Lt, 2m ht, 20mm cal.	TBC
MIS sin	<i>Miscanthus sinensis 'Flamingo'</i>	Flamingo' Maiden Grass	1.2m x 1 m	200mm	TBC
PER cha	<i>Persoonia chamaepitys</i>	Mountain Geebung	0.2m X 1 m	200mm	TBC
PHL pur	<i>Phlomis purpurea x crinata</i>	Phlomis 'Lemon Blush'	1.2m x 1 m	200mm	TBC
SAL afr	<i>Salvia africana-lutea</i>	Salvia africana-lutea	1m x 1m	200mm	TBC
SAL ver	<i>Salvia verticillata 'Purple Rain'</i>	Salvia 'Purple Rain'	0.6m x 0.75m	200mm	TBC
<b>TOTAL:</b>					<b>0</b>

BOUTIQUE LANDSCAPE - PODIUM TOP

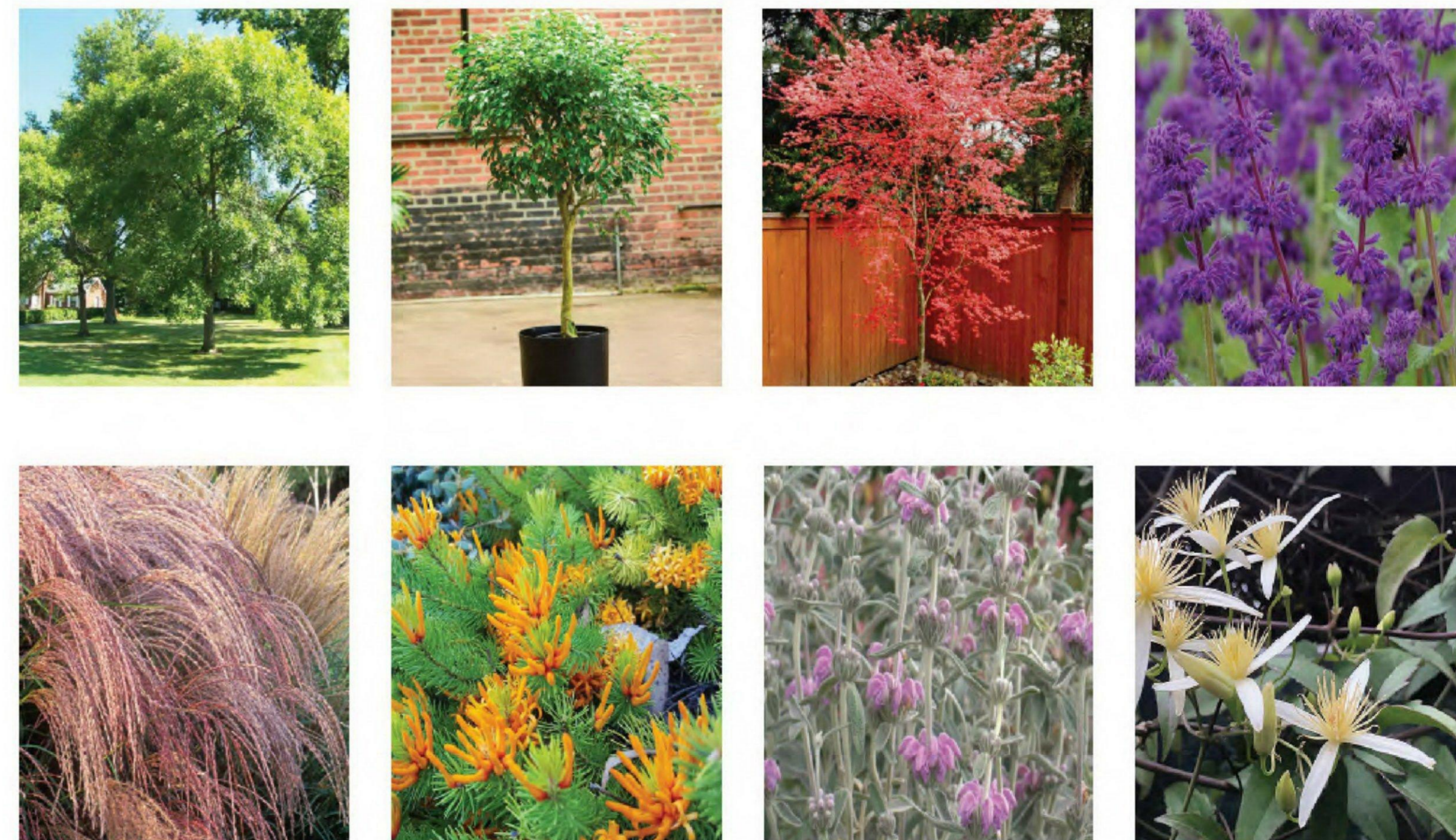
Key	Botanical Name	Common Name	Size	Pot / Installation size	Qty.
FIC ben	<i>Ficus benjamina 'Exotica'</i>	Weeping Chinese Banyan	1.5m x 1 m	200mm	TBC
OEN lin	<i>Oenothera lindheimeri 'Summer Breeze'</i>	Gaura 'Summer Breeze'	1.2m x 0.5m	200mm	TBC
ROS off	<i>Rosmarinus officinalis prostratus</i>	Prostrate Rosemary	0.3m x 1 m	200mm	TBC
IND aus	<i>Indigofera australis</i>	Austral Indigo	1.6m x 1.6m	140mm	TBC
LAV gro	<i>Laveandula x intermedia 'Grosso'</i>	Grosso' Lavender	0.8m x 0.5m	200mm	TBC

Note:

Plants have been selected in part from *City of Monash - Indigenous Species in Monash, Growing Green Guide (Melbourne City Council)* and plants suitable for containerised and roof top environments.

At least 5% of the building's regularly occupied areas or land within the site boundary (whichever is greater) will be planted a area (either vertical or horizontal).

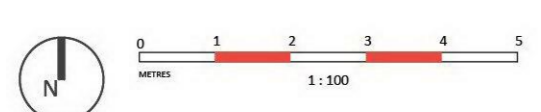
PLANT IMAGES (SELECTION)



ADVERTISED COPY - CITY OF MONASH  
 This copied document is made available for the sole purpose of enabling its consideration and review as part of a planning process under the Planning and Environment Act.  
 The document must not be used for any purpose which may breach copyright.



409 CLAYTON ROAD, CLAYTON VIC  
 MAINTENANCE, GENERAL NOTES & PLANT SCHEDULE



**PROJECT INFORMATION**  
 Project No: 13934  
 Drawing No: LCP\_010  
 Revision No: A  
 Date: 15.08.23  
 Director: DA

REV	DESCRIPTION	DWN	CHK	DATE
A	FOR APPROVAL	MA	GA	15.08.23

**DISCLAIMER**  
 Copyright by Human Habitats Pty Ltd. This drawing or parts thereof may not be reproduced for any purpose or used for another project without the express written consent of Human Habitats other than for the purposes of actual ordering, supply, installation, or construction. This drawing must be read in conjunction with all relevant contracts, schedules, specifications, drawings and any other issued written instructions. Do not scale from drawings. Written figured dimensions take preference to scaled dimensions and must be verified on site prior to proceeding with any work. All discrepancies must be referred to the superintendent for a written decision prior to ordering, supply or installation. Human Habitats must be notified in writing of any discrepancies.