

ADVERTISED COPY

LP 12951

EDITION 2

PLAN MAY BE LODGED 20/05/1929

2 SHEETS  
SHEET 1.

COLOUR CODE

- E-1 = BLUE
- R1 = BROWN
- E-3 = HATCHED RED OVER BLUE
- E-4 = HATCHED RED OVER RED

APPROPRIATIONS

THE LAND APPROPRIATED OR SET APART FOR ROADS IS COLOURED BROWN

THE LAND APPROPRIATED OR SET APART FOR DRAINAGE AND SEWERAGE PURPOSES IS COLOURED BLUE AND HATCHED RED OVER RED AND IS SIX FEET WIDE

ENCUMBRANCES

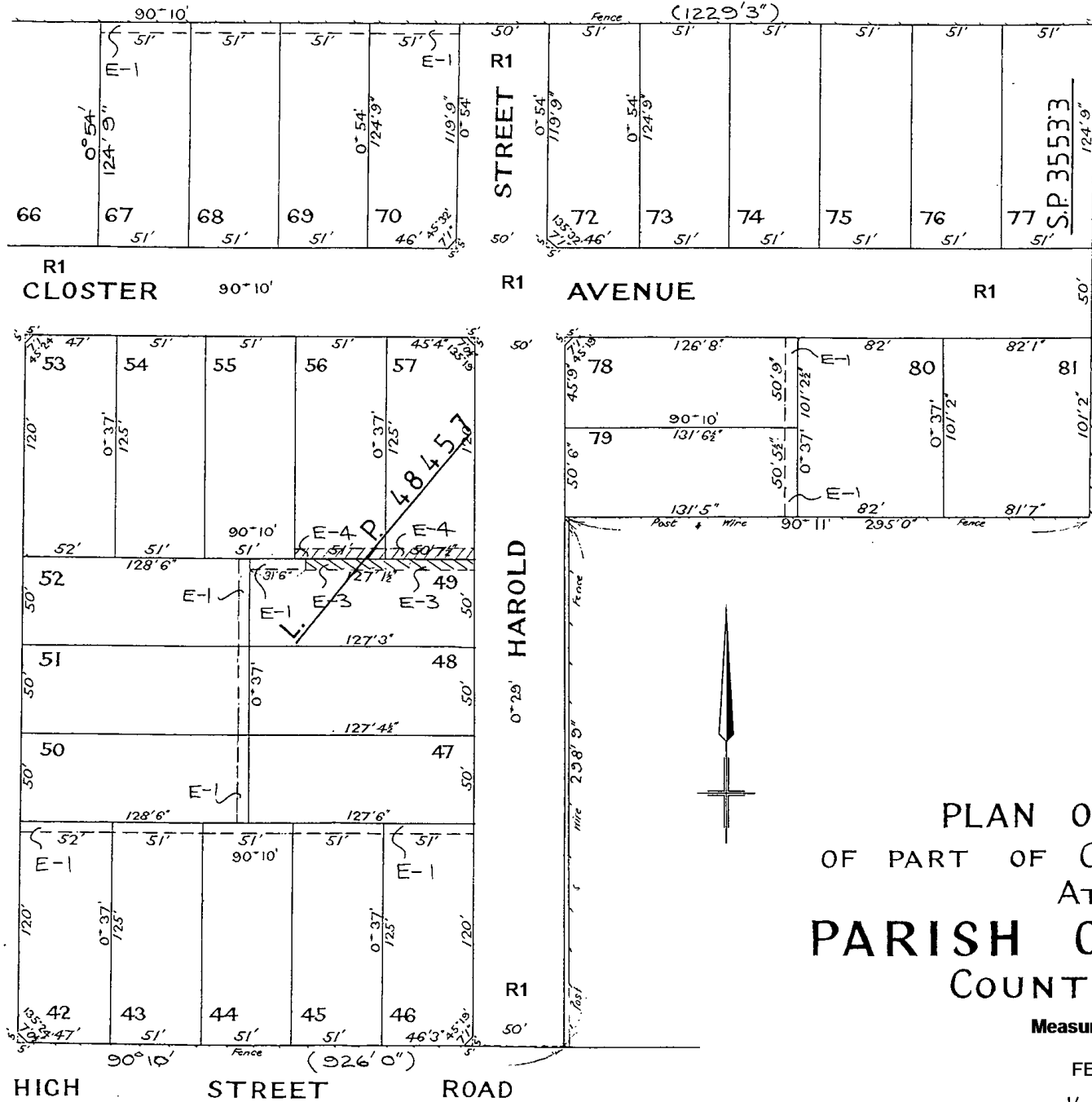
AS TO THE LAND MARKED R1: ANY EASEMENTS AFFECTING THE SAME

NOTATIONS

DRAINAGE AND SEWERAGE EASEMENT COLOURED RED HATCHED OVER BLUE IS EXCISED. EASEMENT COLOURED RED HATCHED OVER RED IS INSERTED VIDE. Appn. 16239 SEC. 103

STREET NAME AMENDED FROM BOUNDARY ROAD TO WARRIGAL ROAD CORR. 37/26979

SEE SHEET 2  
STREET  
MORRIS



PLAN OF SUBDIVISION  
OF PART OF CROWN PORTION 113  
AT BURWOOD  
PARISH OF MULGRAVE  
COUNTY OF BOURKE

Measurements are in Feet & Inches

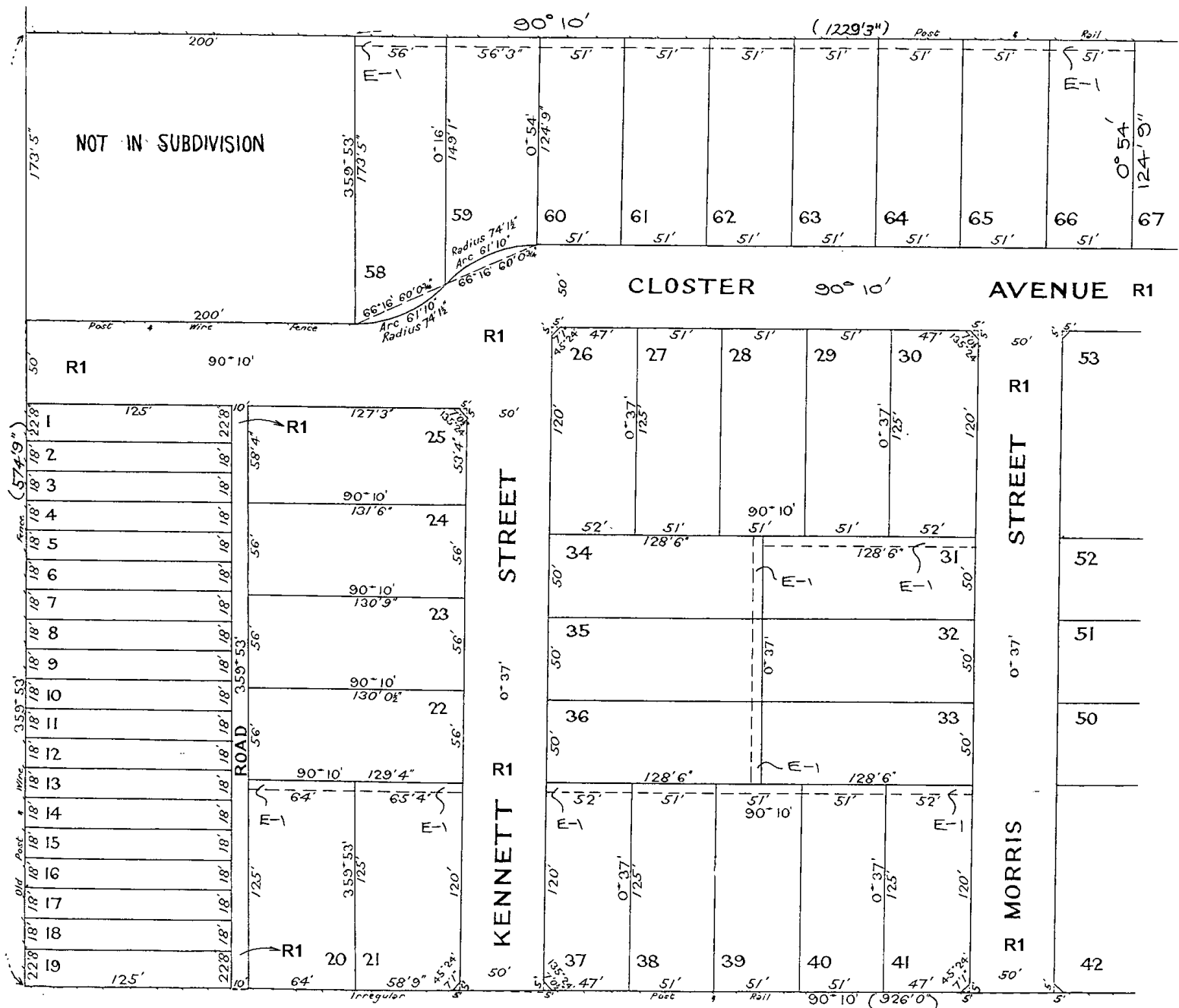
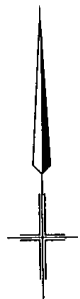
Conversion Factor  
FEET X 0.3048 = METRES

Vol. 5511 Fol. 1102115

2 SHEETS  
SHEET 2

ROAD

WARRIGAL



SEE SHEET 1

