

Images	ID	Qty	Common Name	Botanical Name	Scheduled Size	Mature Height	Mature Spread	Remarks
	Me az	4	White Cedar	Melia azedarach	400mm	5 M	6 M	
	Pr Lu	2	Portugese Laurel	Prunus Lusitanica	200mm	5m	4m	
	PyCaCa	6	Capital Flowering Pear	Pyrus calleryana 'Capital'	400mm	10m	3m	
	SySm	6	Creek lilly pilly narrow-leaved lilly pilly	Syzygium smithii	400mm	15m	3.5m	
Shrubs								
	AbGr	17	Glossy Abelia	Abelia x grandiflora	140mm	2m	2m	
	Co Al	11	Native Fuchsia	Correa Alba	140mm	1m	1m	
	DaOd	10	Fragrant Daphne	Daphne odora	200MM	1m	1m	
	GaJR	17	Miniature Gardenia	Gardenia jasminoides 'Radicans'	140MM	.4m	1m	
Ground Covers								
	IrGer	31	Bearded Iris, German irfs, Lent A. Williamson	Iris germanica	140 mm	.75MM	.5MM	
Grasses								
	Lo Na	79	Dwarf Mat-rush	Lomandra nana	75mm	.4M	.4M	
	MiSi	6	Japanese Silver Grass	Miscanthus sinensis	140mm	2M	1.2M	
	Po La	13	Tussock Grass	Poa labillardieri	75 mm	1M	.6M	
	Sten	6	Ponytail Grass	Stipa tenuissima	140mm	2M	1.5M	
Climbers								
	PaPa	1	Wonga Wonga Vine	Pandorea pandorana	200mm	3 - 5m	0.6 - 0.9m	
	ViVi	5	ornamental grape, common grape	Vitis vinifera	200mm	5 - 10m	3.5 - 6m	
Aquatic Plants								
Perennials								

Landscape Area - Mass Planting	Area Name	Percent	Qty	Botanical Name	Common Name	Scheduled Size	Rate/Spacing	Plant ID
Car Park Planting 1	30.8	12	Abelia x grandiflora	Glossy Abelia	140mm	2 Plants/sq m	AbGr	
	30.8	12	Gardenia jasminoides 'Radicans'	Miniature Gardenia	140MM	2 Plants/sq m	CoJR	
	30.8	12	Arthropodium Cirratum	Rock Lilly	140 mm	2 Plants/sq m	Ar Ci	
	7.7	1	Pandorea pandorana	Wonga Wonga Vine	200mm	0.5 Plants/sq m	PaPa	
Mass Planting 5	0	0						
	100	61	Arthropodium Cirratum	Rock Lilly	140 mm	3 Plants/sq m	Ar Ci	
Mass Planting 4	50	6	Miscanthus sinensis	Japanese Silver Grass	140mm	2 Plants/sq m	MiSi	
	50	6	Stipa tenuissima	Ponytail Grass	140mm	2 Plants/sq m	Sten	
	0	0						
Mass Planting 1	57.1	24	Lomandra nana	Dwarf Mat-rush	75mm	4 Plants/sq m	Lo Na	
	42.9	13	Poa labillardieri	Tussock Grass	75 mm	3 Plants/sq m	Po La	
Car Park Planting 2	33.3	5	Abelia x grandiflora	Glossy Abelia	140mm	2 Plants/sq m	AbGr	
	33.3	5	Gardenia jasminoides 'Radicans'	Miniature Gardenia	140MM	2 Plants/sq m	CoJR	
	33.3	5	Arthropodium Cirratum	Rock Lilly	140 mm	2 Plants/sq m	Ar Ci	
	0	0						
Mass Planting 2	40	21	Lomandra nana	Dwarf Mat-rush	75mm	4 Plants/sq m	Lo Na	
	30	12	Iris germanica	Bearded Iris, German	140 mm	3 Plants/sq m	IrGer	
	30	12	Arthropodium Cirratum	Rock Lilly	140 mm	3 Plants/sq m	Ar Ci	
Mass Planting 3	40	34	Lomandra nana	Dwarf Mat-rush	75mm	4 Plants/sq m	Lo Na	
	30	19	Iris germanica	Bearded Iris, German	140 mm	3 Plants/sq m	IrGer	
	30	19	Arthropodium Cirratum	Rock Lilly	140 mm	3 Plants/sq m	Ar Ci	

LANDSCAPE NOTES

No building works or facilities are to be located within the designated landscape zones
 Ensure all garden beds, lawns, sand areas are enclosed by a 100mm x 19mm Cypress Pine Edging, pegged at 1200mm c/c and with 2mm freeboard to prevent mulch migration and garden bed disruption.
 Aris and sand timber edging to prevent acute edges & splintering

All Topsoils and Mulches to conform to current Australian standards are to be approved by site supervisor before delivery to site.
 All soils to be weed and lump free, to be friable and easily screeded.
 Mulches must be 19mm Hammer Milled Pine Bark, fully composted, weed and pathogen free
 Nursery, be true to type, in good health, disease free and in the containers nominated above. All root bound plant material must be rejected.
 All landscape works to be undertaken by experienced and qualified professional landscapers

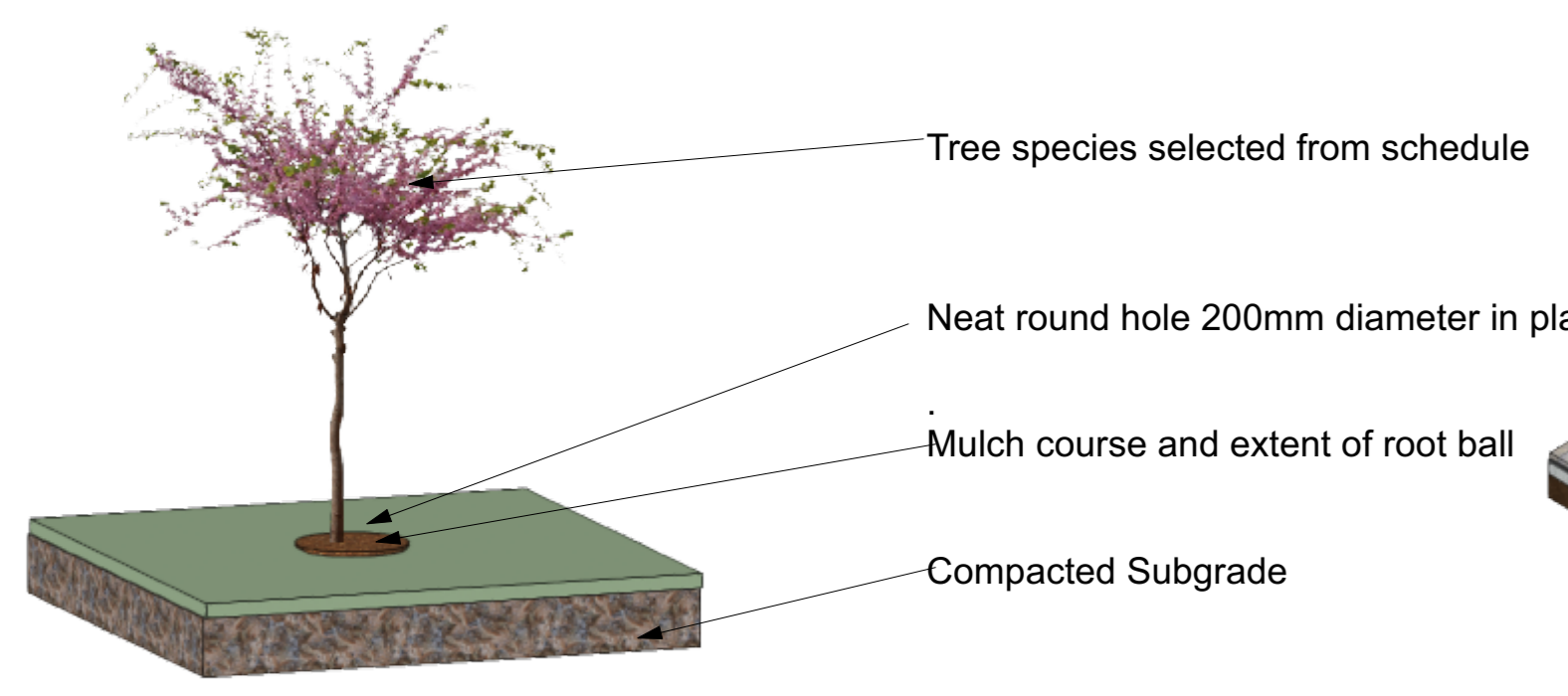
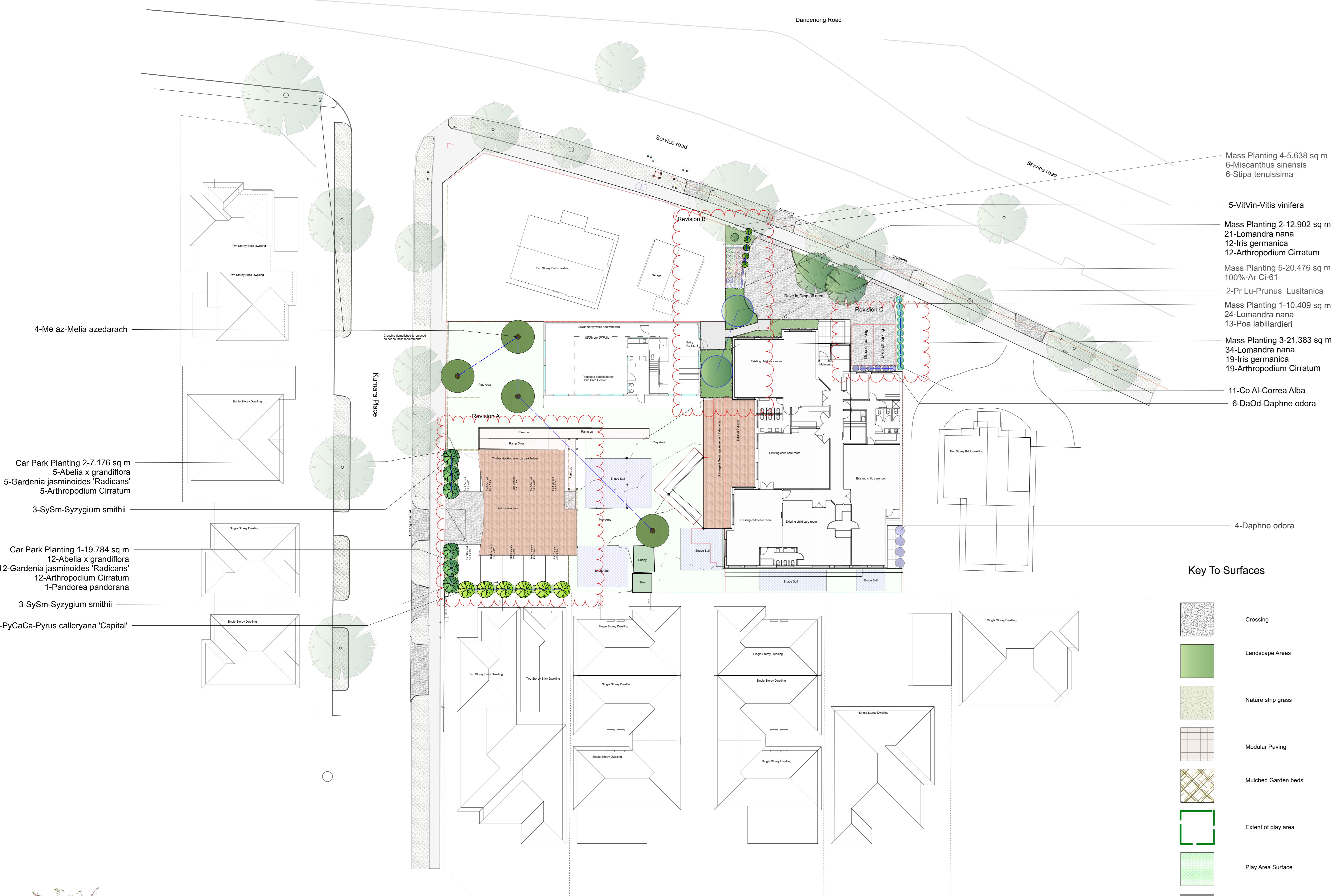
LANDSCAPE PLAN
PROPOSED CHILD CARE CENTRE
 2 KUMARA PLACE, CLAYTON
 VICTORIA 3168

MORRIS OUTSIDE

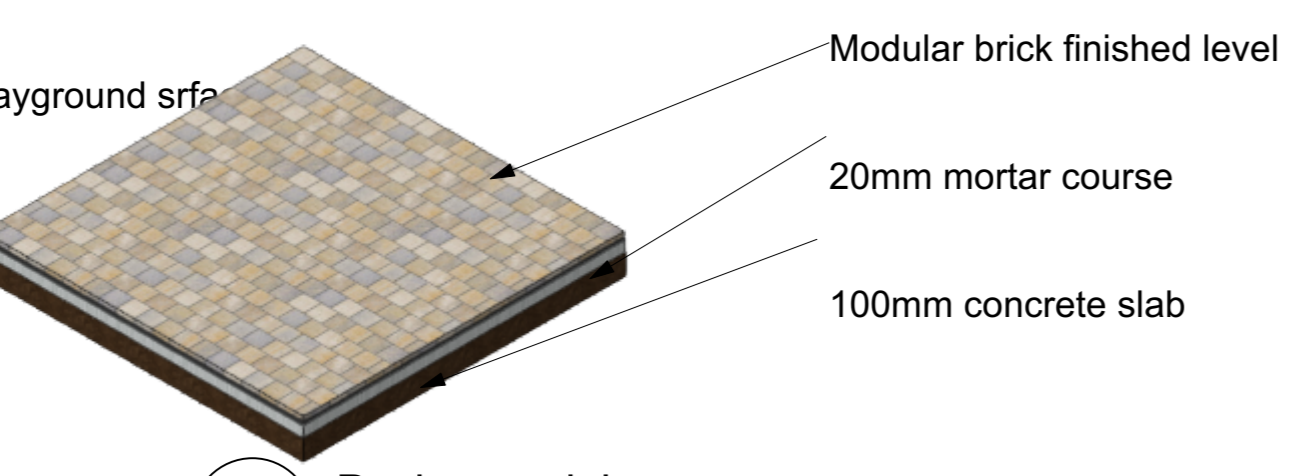
ISSUED FOR PLANNING TO CITY OF MONASH
 REFERENCE TPA/52843

SCALE as shown @ A0Paper size 15.10.21. 21.11.22

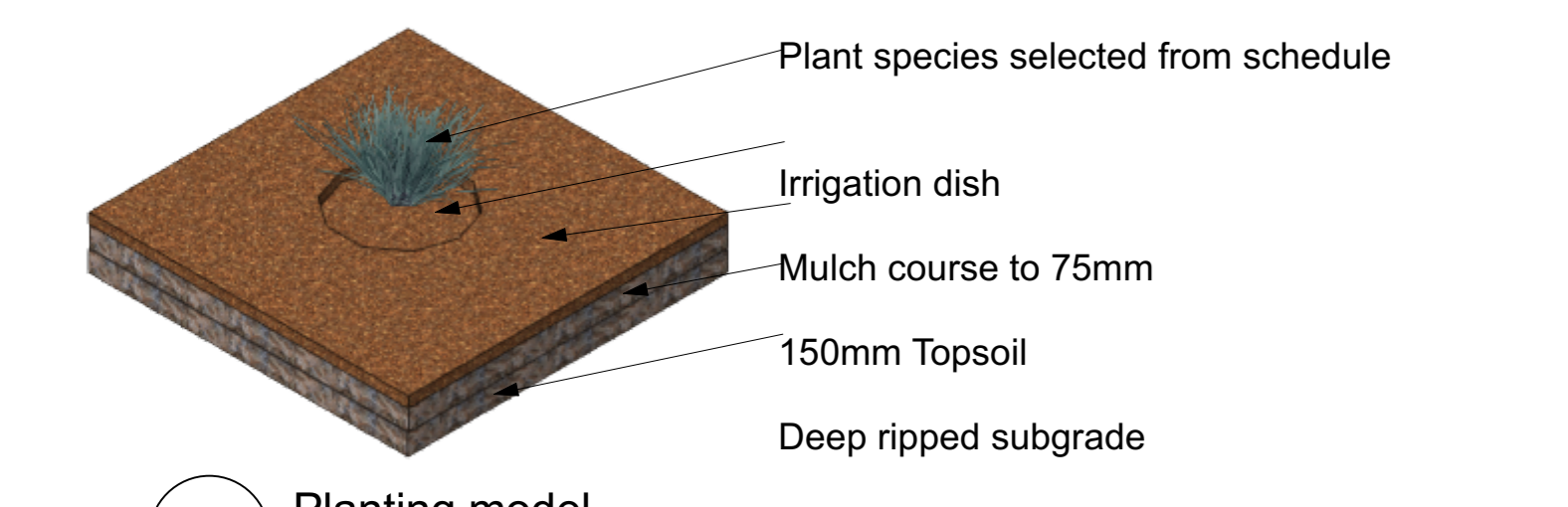
PLAN LA/02/KM151021
 RICHARD MORRIS MORRIS OUTSIDE PL TEL 0419328448



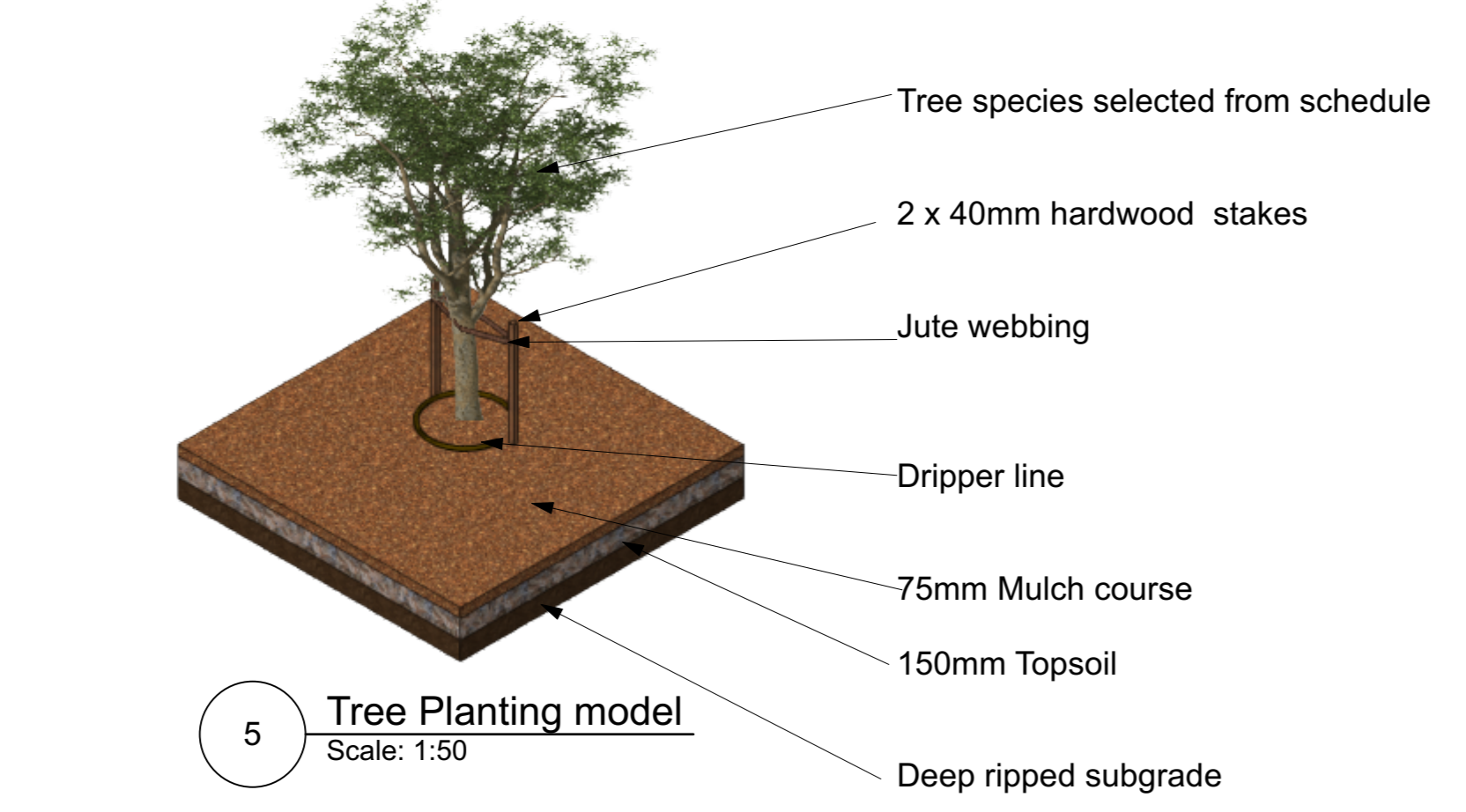
2 Playground Planting model Scale: 1:50



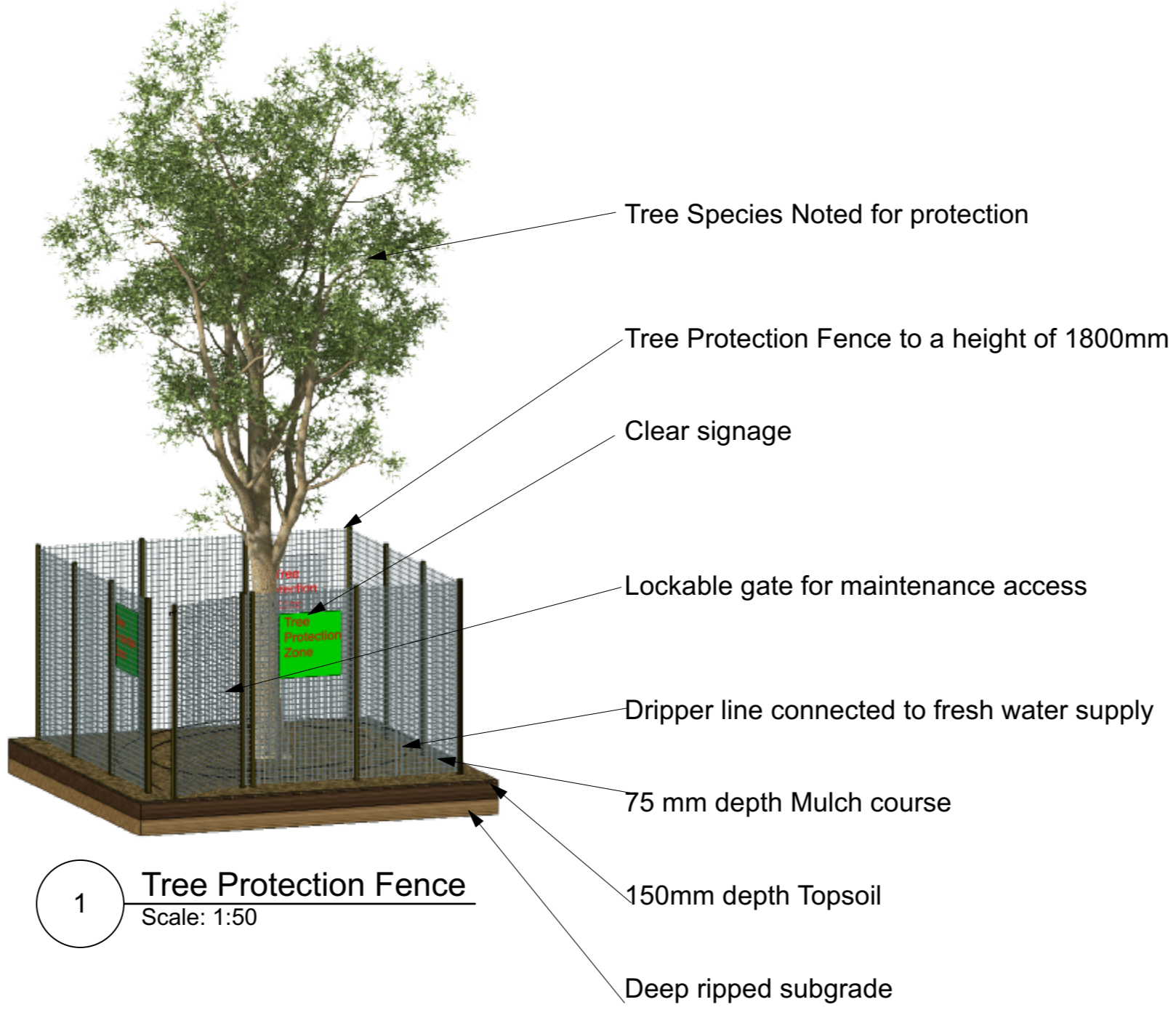
8 Paving model Scale: 1:50



4 Planting model Scale: 1:50



5 Tree Planting model Scale: 1:50



1 Tree Protection Fence Scale: 1:50

Key To Surfaces

- Crossing
- Landscape Areas
- Nature strip grass
- Modular Paving
- Mulched Garden beds
- Extent of play area
- Play Area Surface
- Existing footpath
- Decking over car park
- Driveway surface
- Pedestrian Ramp

6 Key To Surfaces Scale: 1:100

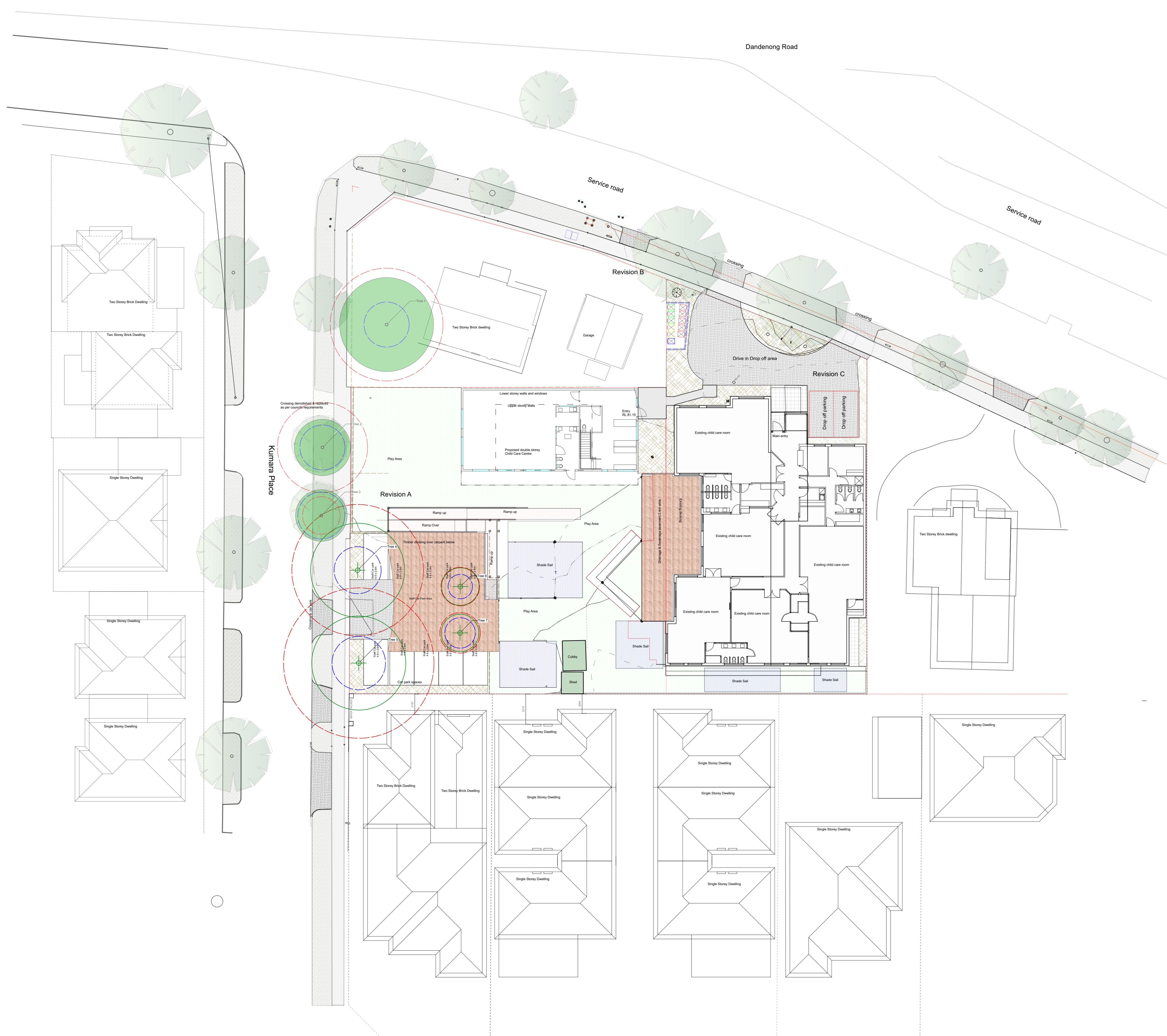
REVISION AMENDMENTS

Revision A
 Redesign of car park planting to provide screening to structure by using trees with a columnar habit & climbing plants. This planting composition will conceal the carpark wall and provide an attractive addition to the development

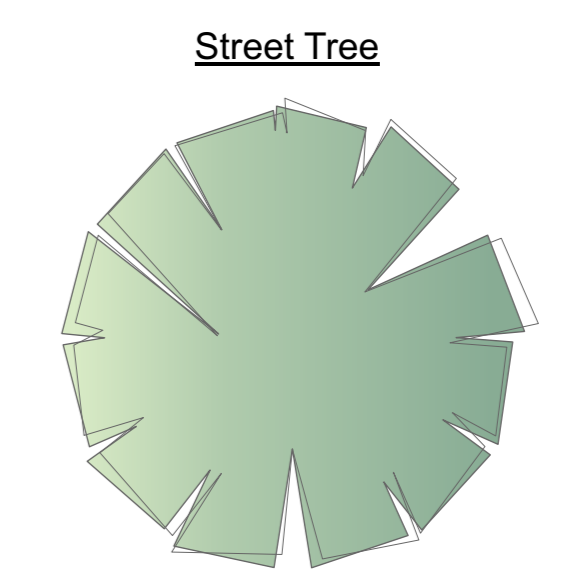
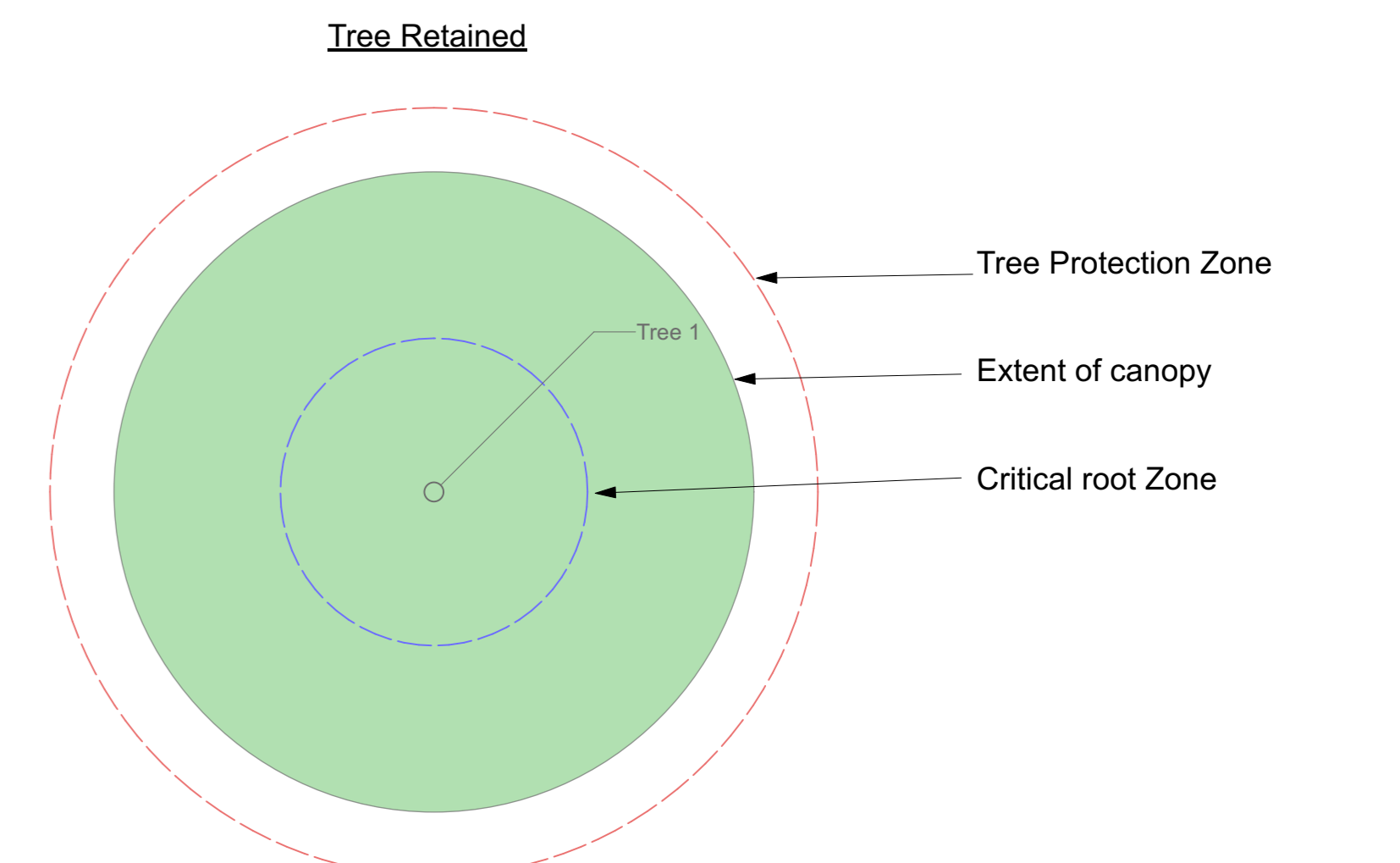
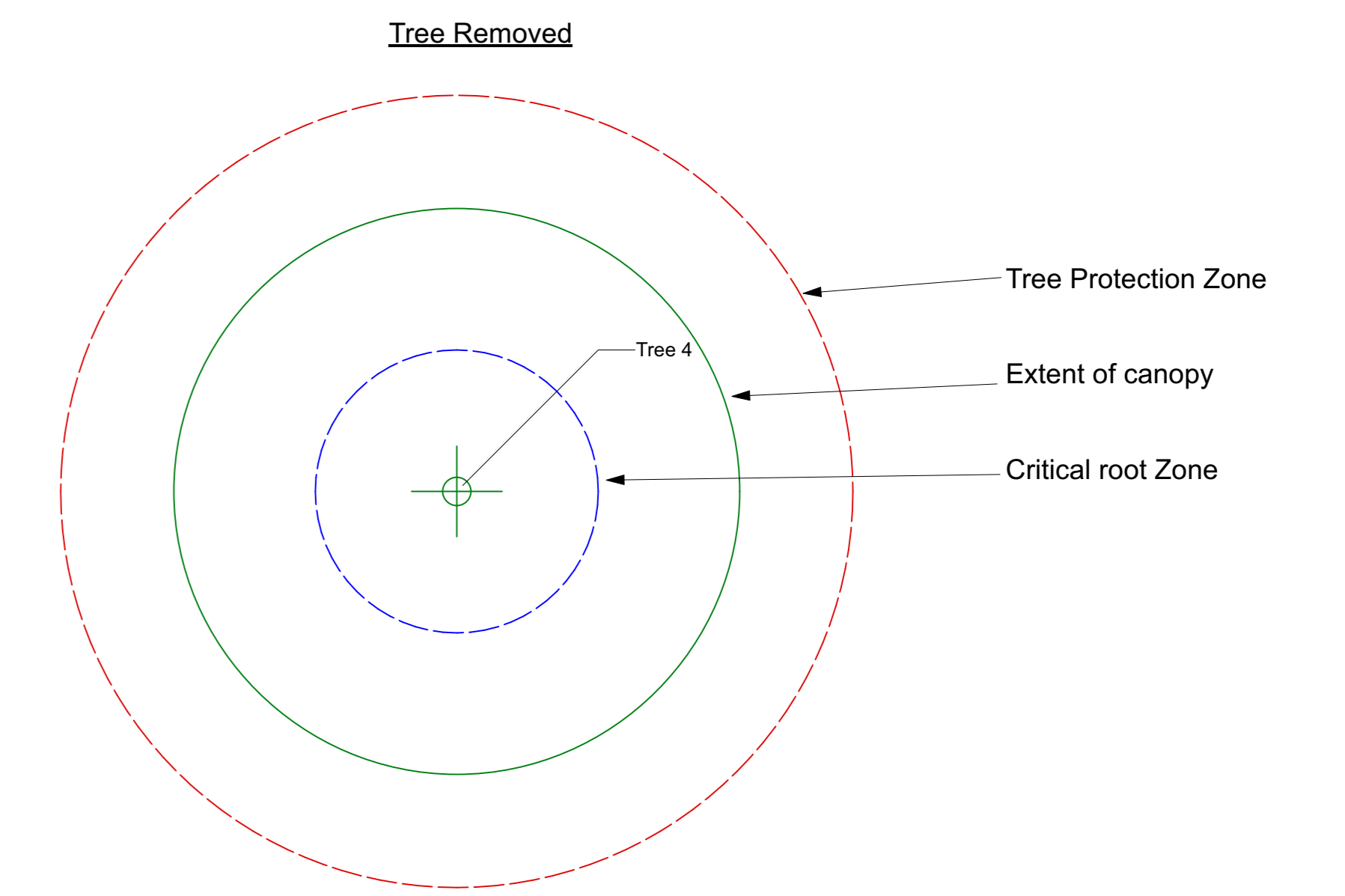
Revision B
 Redesign of proposed child care structure. Replanting to entry of child care centre using mid canopy trees and dense underplanting which will mature into a planting with understorey & ground covers. Redesign of planting around bin enclosures with an emphasis on screening & 100% cover on maturity. The planting is designed to add visual value to the entry with both fragrant & textured plant subjects.

Revision C
 Redesign of drop off parking area, small shrub planting of Daphne & Correa Alba

12 Revision Cloud Text Scale: 1:200



4 Existing trees
Scale: 1:200



2 Tree key
Scale: 1:100

Existing Tree Report

ID	Botanical Name	Common Name	Average Spread	Action
Tree 1	<i>Cedrus atlantica</i> 'Glauca'	Blue Atlas Cedar	10000	Retain
Tree 2	<i>Cedrus atlantica</i> 'Glauca'	Blue Atlas Cedar	10000	Retain
Tree 3	<i>Agonis flexuosa</i>	Willow myrtle	6000	Retain
Tree 4	<i>Agonis flexuosa</i>	Willow myrtle	5500	Retain
Tree 5	<i>Eucalyptus sideroxylon</i>	Red Ironbark	10000	Remove
Tree 6	<i>Eucalyptus sideroxylon</i>	Red Ironbark	10000	Remove
Tree 7	<i>Eucalyptus sideroxylon</i>	Red Ironbark	10000	Remove
Tree 8	<i>Cotoneaster glaucophylla</i>	Bright Head Cotoneaster	4000	Remove
Tree 9	<i>Lagerstroemia indica</i>	Crepe Myrtle	4000	Remove

EXISTING TREES
PROPOSED CHILD CARE CENTRE
2 KUMARA PLACE, CLAYTON
VICTORIA 3168

ISSUED FOR PLANNING TO CITY OF MONASH
REFERENCE TPA/52843

SCALE as shown @ A0Paper size 15.10.21. 21.11.22

PLAN LA/02/KM151021
RICHARD MORRIS MORRIS OUTSIDE PL TEL 0419328448

