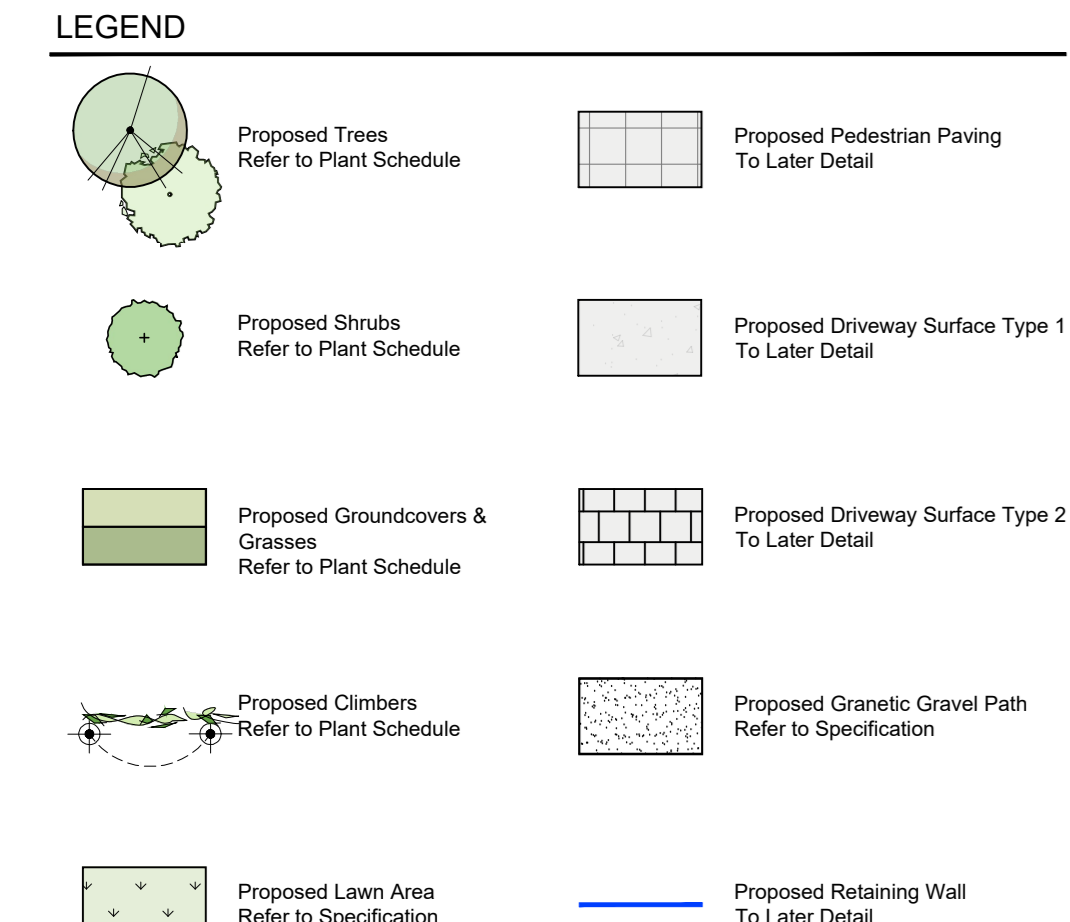
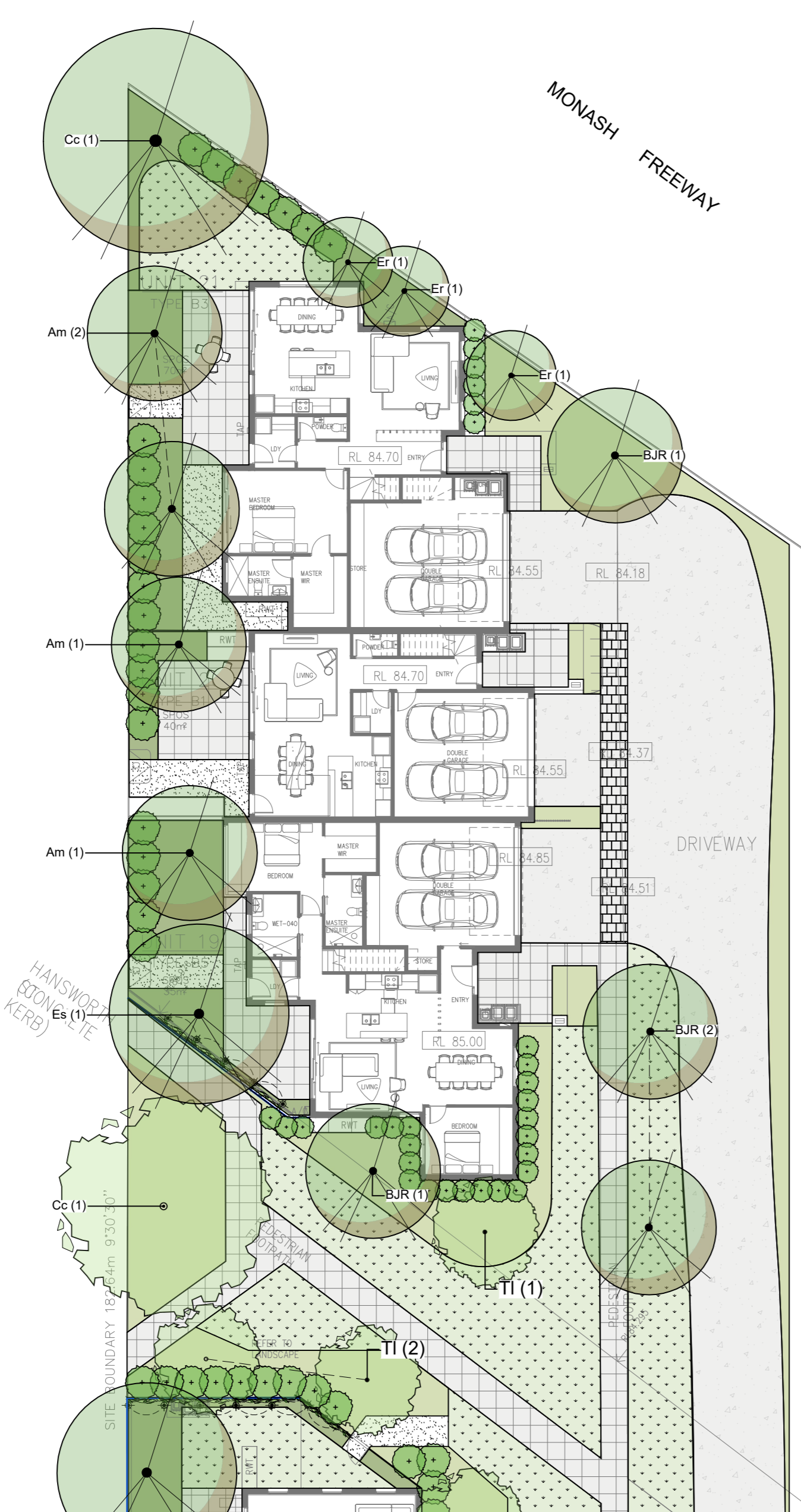


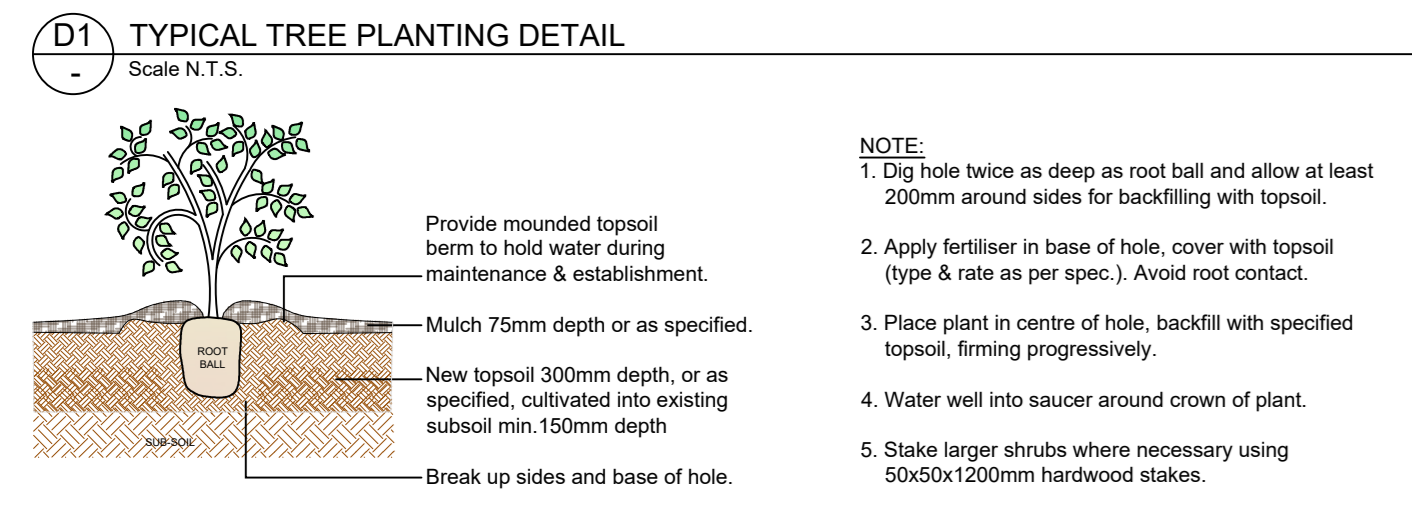
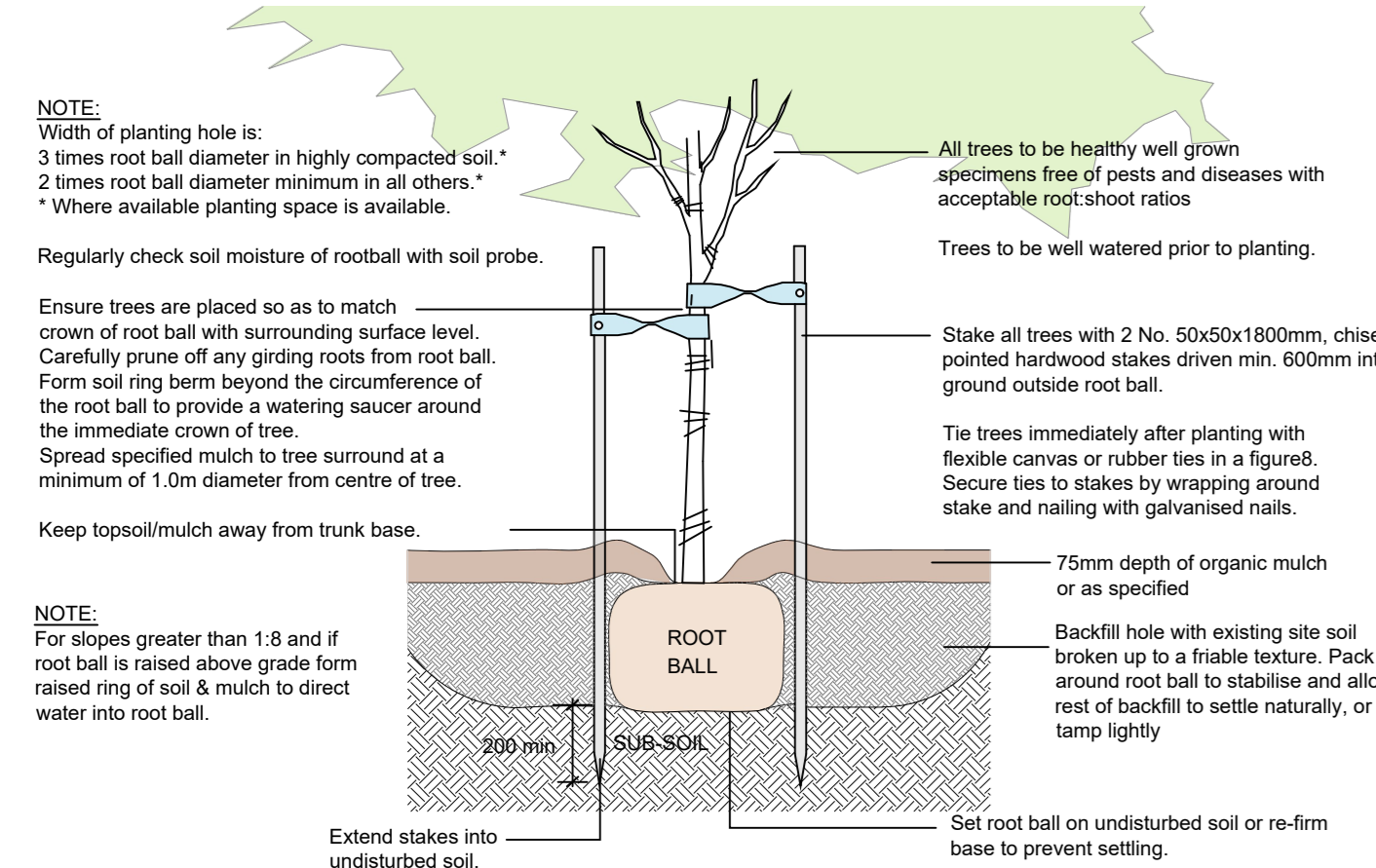
KEY PLAN



LANDSCAPE PLAN 1



TYPICAL PLANTING DETAILS



SPECIFICATION NOTES

Soil Preparation: Crushed rock, concrete splage and any other material restrictive to plant growth (e.g. large rocks) shall be removed from the site of any planting beds and semi-vegetative soil. All trees to be removed shall be stumped and all rubbish/vegetative soil to be removed from site. Existing top soil in planting areas is to be preserved so that it does not receive additional compaction from site machinery and so that no rubble or building supplies are stored in these areas.

Weed Removal: All weeds shall be thoroughly removed. All vegetative material, including roots and rhizomes of non-woody perennials and woody suckering weeds, is to be removed or appropriately controlled using chemical means. The stumps of non-suckering woody perennials are to be stumped. All vegetative material shall be appropriately disposed of off site in a manner which will not allow their re-establishment elsewhere. Any chemical controls are to be used in accordance with manufacturer's instructions and standard occupational health and safety procedures.

Planting: Planting shall be carried out using accepted horticultural practices with all plants conforming to the species, size and quantities indicated on the Landscape Plan and Plant Schedule. Plants shall be thoroughly watered through immersion in water prior to planting and if the planting soil is very dry then the planting hole is also to be filled with water and allowed to drain completely.

Plant Establishment Period: There shall be a 13 weeks Plant Establishment Period following the approval of Practical Completion by the responsible authority. During this period the landscape contractor shall make good all defects in his/her scope of works. Maintenance and Establishment shall include the care and maintenance of the contract area by accepted horticultural practices, as well as rectifying any defects that become apparent in the work under normal use. This shall include, but shall not be limited to watering, fertilising, weeding, pruning, pest and disease control, cultivation, re-planting and replacement of any plants that fail with plants of the same species and size.

PLANT SCHEDULE

SYM	BOTANICAL NAME	COMMON NAME	DIE IN EX	HEIGHT X WIDTH AT MATURITY	MIN SUPPLY SIZE	QTY
TREES						
Am	Acacia melanoxylon	Blackwood	EN	12-15 x 6m	50cm/2.0mH	19
BUR	Brachycthon acerifolius + populneus	Jerilderie Red Brachycthon	EN	8 x 6 m	50cm/2.0mH	14
Cc	Corymbia citriodora	Lemon-scented Gum	EN	15-20 x 10-12m	50cm/2.0mH	11
Cf	Corymbia ficifolia	Red Flowering Gum	EN	12 x 8m	50cm/2.0mH	8
Er	Eucalyptus radiata	Blakely's Red Gum	EN	9 x 4m	50cm/2.0mH	4
Es	Eucalyptus scoparia	Wallagoola White Gum	EN	10-12 x 6-8m	50cm/2.0mH	10
Ti	Triticaspis laurina	Karoola/Waller Gum	EN	8 x 5m	50cm/2.0mH	17
SHRUBS						
Aa	Acacia acicula	Gold Dust Wattle	EN	1.5-2 x 2-4m	200mm pot	
Bs	Buraria spinosa	Sweet Buraria	EN	2.6 x 2-3m	200mm pot	
Ca	Comesalis	White Cornus	EN	1.1-2 x 1-1.5m	200mm pot	
Cc	Cornus reflexa	Common Cornus	EN	1 x 1 m	200mm pot	
Op	Olearia philippopappa	Dusty Daisy-bush	EN	1.5 x 1.5m	200mm pot	
Pm	Philotheca myoporoides	Yax Flower	EN	1.5 x 1.5m	200mm pot	
Pa	Phecolobium aegyptiacum	Silver Broomrape	EN	1.1 x 1.5m	200mm pot	
SaS	Strydom australis 'Select Form'	Select Lillybush	EN	3.5 x 1-2m	200mm pot	
GROUNDCOVERS & GRASSES						
ABB	Angiozanthus 'Bush Blitz'	Kangaroo Paw	EN	0.7 x 0.4m	140mm pot	
Cs	Chrysanthemum semipapposum	Clustered Everlasting	EN	0.5-0.6 x 0.5-1m	140mm pot	
DCLR	Dianella revoluta 'Lily Reef'	Lily Reef Dianella	EN	0.3-0.4 x 0.3m	140mm pot	
DI	Dianella laurina	Tasman Flax Lily	EN	0.6-1.5 x 0.5-2m	140mm pot	
LI	Lomandra longifolia	Spry-headed Mat-rush	EN	1 x 1-1.5m	140mm pot	
Mc	Mitrasacme caerulea	Fringed Heath Myrtle	EN	0.8 x 1.5m	140mm pot	
Mp	Myoporum parviflorum	Creeching Boboetia	EN	0.2 x 1.3m	140mm pot	
Pp	Platanus occidentalis	Long-leaf Purple Flag	EN	0.3 x 0.5m	140mm pot	
Pm	Poa montana	Velvet Tussock Grass	EN	0.3 x 0.4m	140mm pot	
CLIMBERS						
Av	Auhampetulum resinatum	Gum Vine	EN		Climber	140mm pot
Cm	Clematis integrifolia	Small-leaved Clematis	EN		Twinning Climber	140mm pot
Hv	Hardenbergia violacea	False Sarsaparilla/Purple Cori	EN		Climber/Scrambler	140mm pot
Pp	Pandorea pandorana	Wonga Wonga Vine	EN		Twinning Climber	140mm pot



ADVERTISED COPY - CITY OF MONASH
This copied document is made available for the sole purpose of enabling its consideration and review as part of a planning process under the Planning and Environment Act. The document must not be used for any purpose which may breach copyright.

FUTURE STAGE (S)
(APARTMENT BUILDING)
REFER TO FUTURE STAGE PLANS
(NOT IN PWA SCOPE)

