

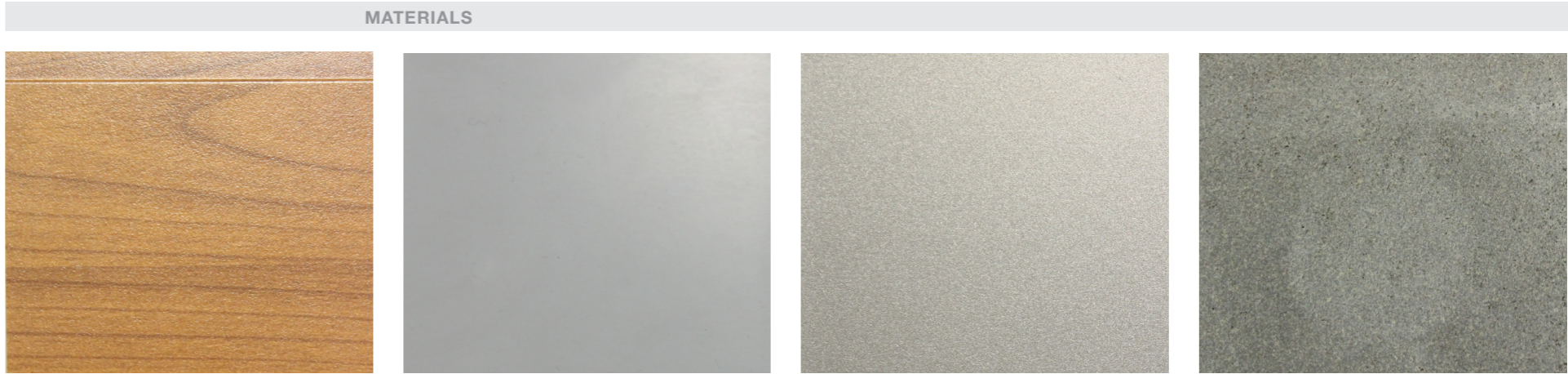
2.0 MATERIAL PALETTE

2.0 MATERIAL PALETTE

FACADE



Springvale Rd Perspective



CD - 01

Timber-Look Aluminium Interlocking Slats

CD - 02

Aluminium Trim

CD - 03

Aluminium composite panel

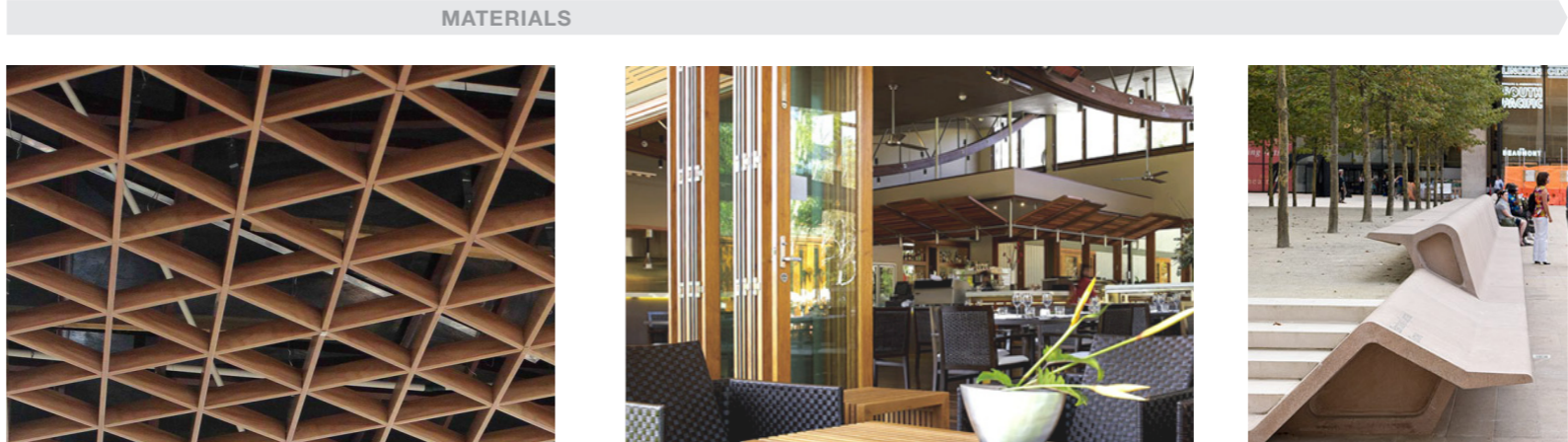
CD - 04

Sawn bluestone

SQUARE



Proposed Square and Pavilion



Glazed Timber Lattice Canopy

Openable Shopfronts

Integrated Concrete Seating



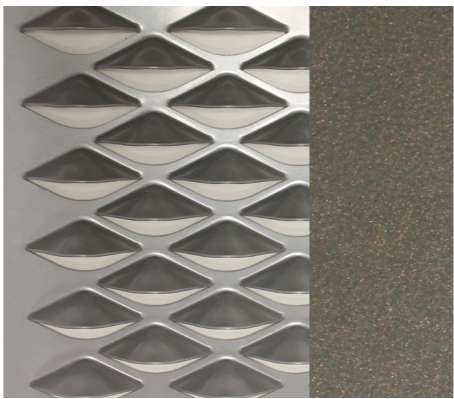
FT - 01

Curtain Wall Clear Glazing
Aluminium Framing
with no more than 20% reflectivity



FT - 02

Glass Fibre Reinforced Concrete Panels (GFRC)



FT - 03

Perforated Metal Screen



FT - 05

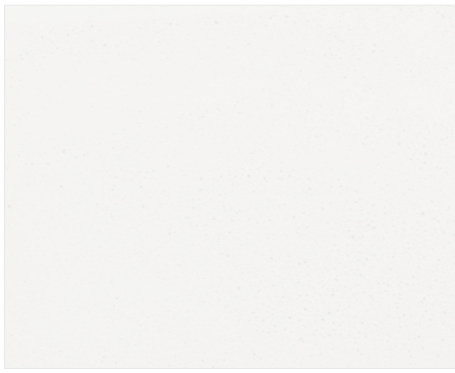
F&B Tenancy Shopfront Standard glazing

2.0

MATERIAL PALETTE

RESIDENTIAL

MATERIALS



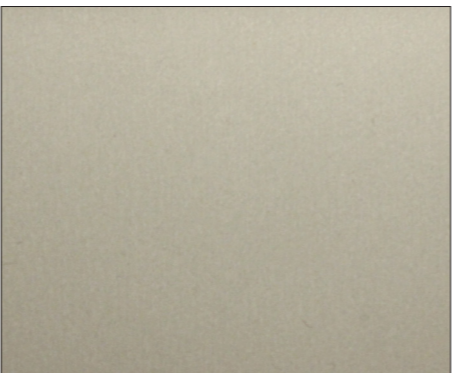
PR - 11

Precast Concrete Facade
Residential Building B



PR - 12

Precast Concrete Facade
Residential Building B



CD - 11

Aluminium screening to plantroom
Residential Buildings A and C



CD - 12

Aluminium screening to plantroom
Residential Building B

MATERIALS



FT - 11

Clear glazing in aluminium frame, metal flashing to match frame
Residential Buildings A, B, and C



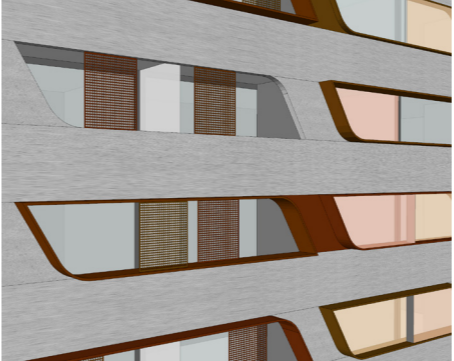
FT - 12

Coloured glazing in matching aluminium frame, all flashing to match frame finish
Residential Building B



FT - 13

Coloured glazing in matching aluminium frame
Residential Buildings A, B, and C



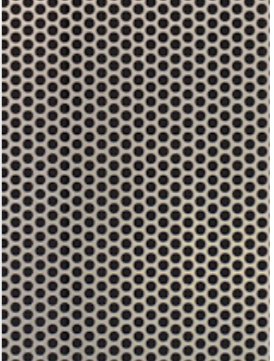
FT - 14

Pop-out window frame. Clear glazing at variable glazing line. Operable perforated screens in sliding track to balcony openings.
Residential Buildings B & C



FT - 15

Clear glazing in aluminium frame. Perforated metal balustrade screening
Residential Buildings A and B

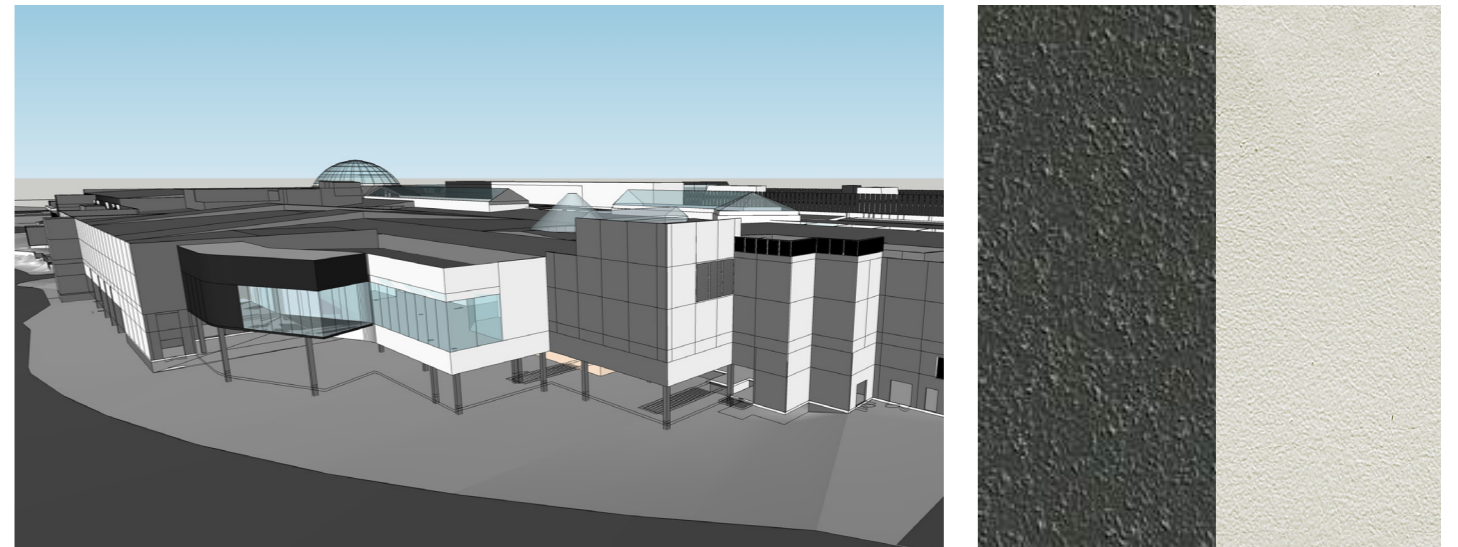


EXISTING BUILDING

EXISTING FACADE



MATERIALS



Play of light and dark on existing facades
Existing Building

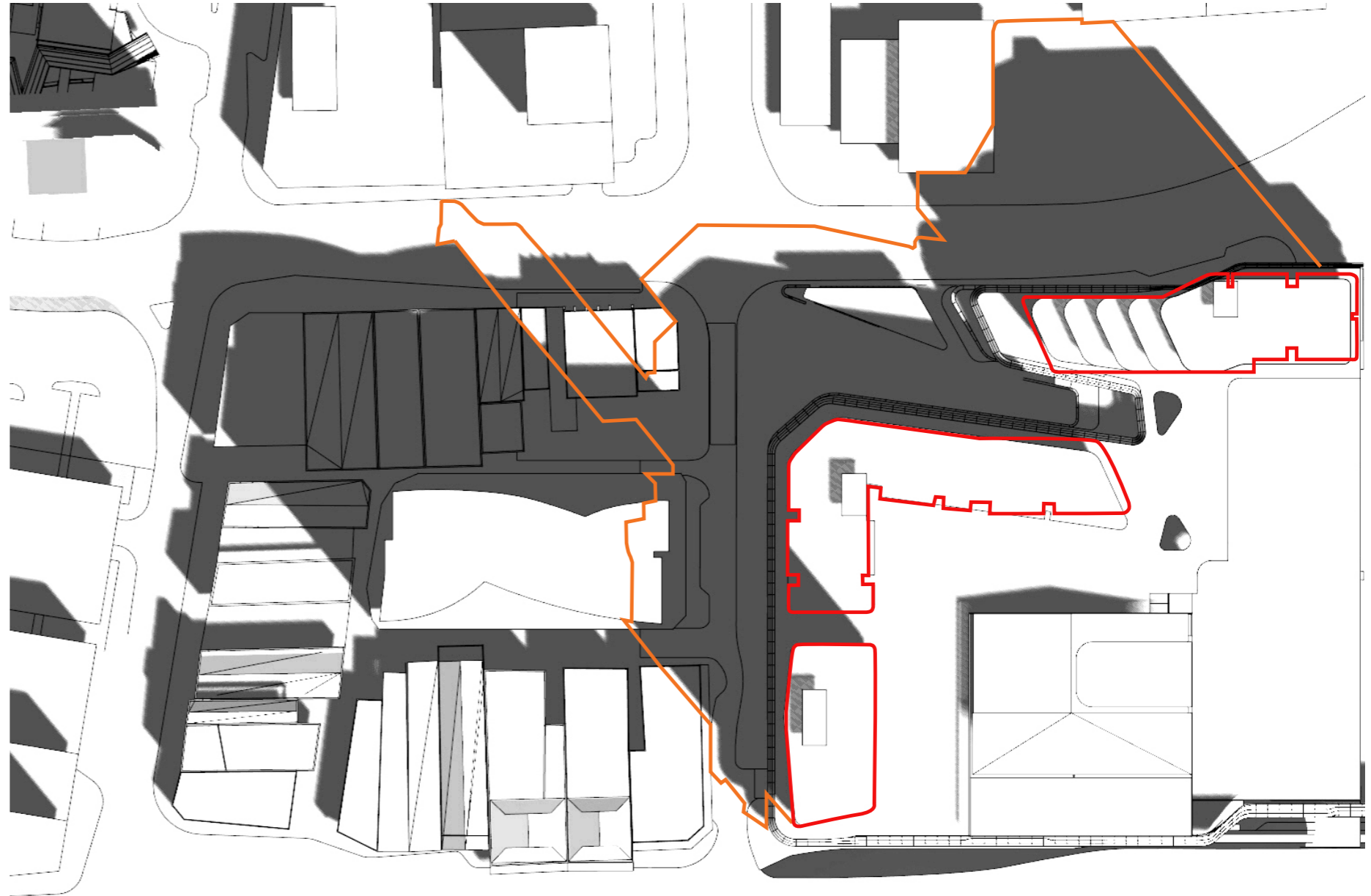
Light and dark painted concrete
Existing Building

3.0 SHADOW DIAGRAMS

3.0 SHADOW COMPARISON

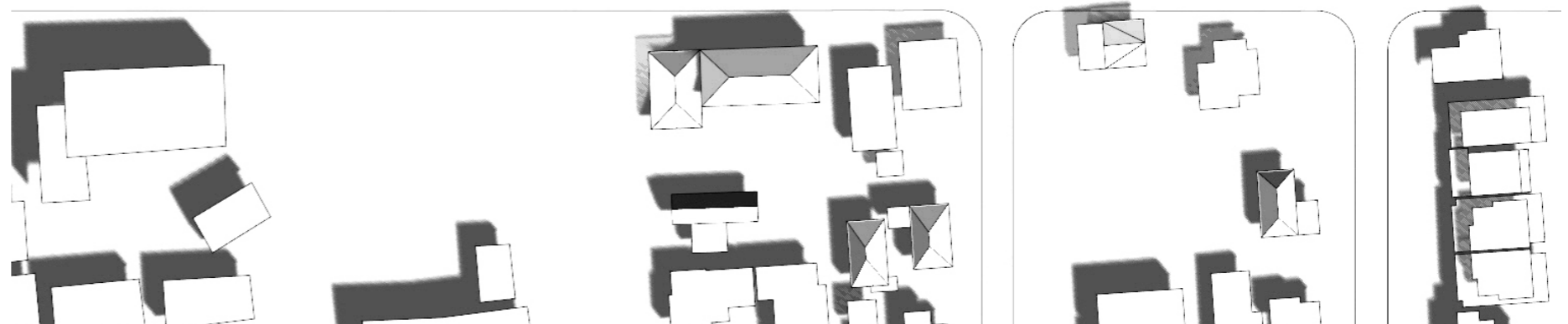
EXISTING (INCLUDING PREVIOUS SUBMITTED)

21 SEPTEMBER 9AM



LEGEND:

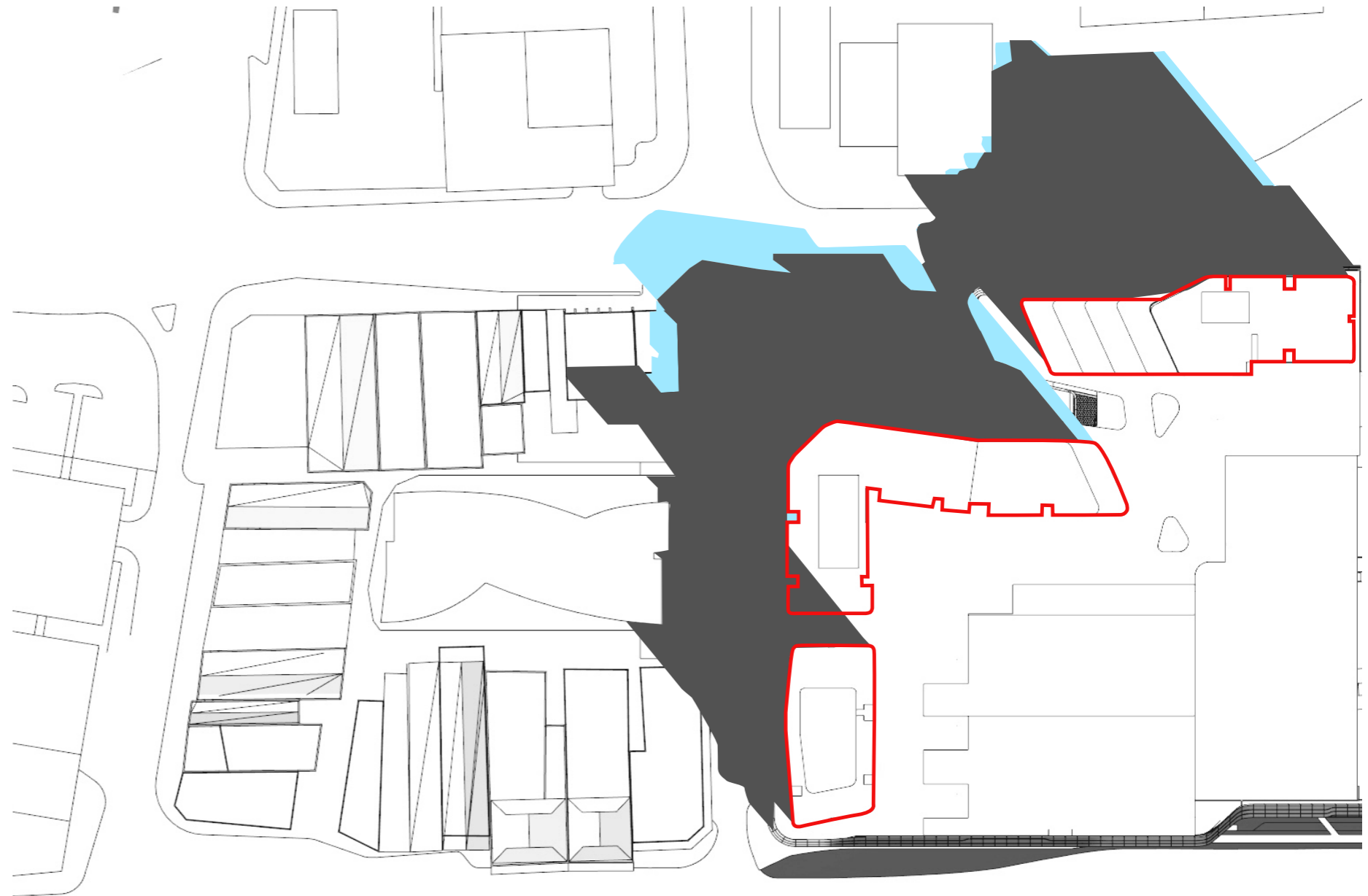
- SHADOW CAST BY PREVIOUS SUBMITTED SCHEME - JUNE 2016
- SHADOW CAST BY PLANNING PERMIT SCHEME - JUNE 2015
- AMENDMENT SCHEME OUTLINE - AUGUST 2016






3.0 SHADOW COMPARISON

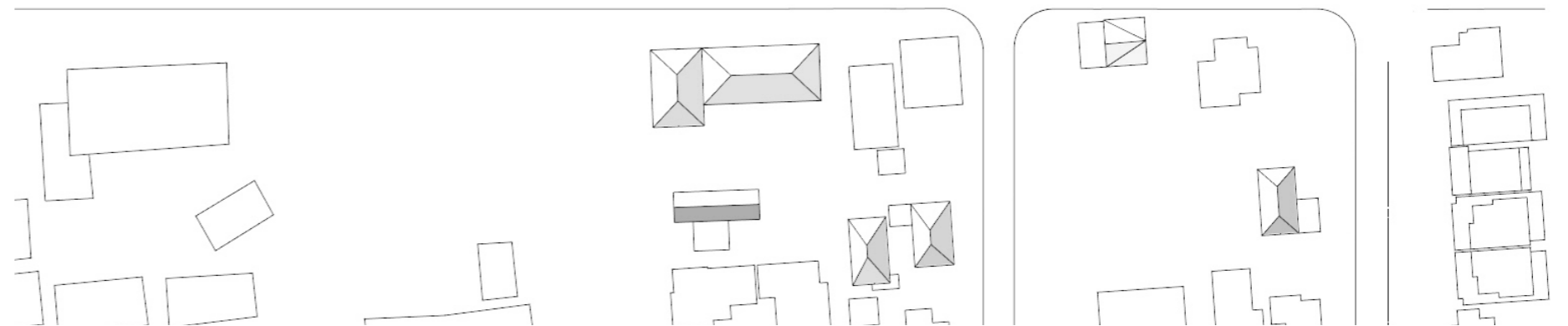
AMENDED SCHEME

21 SEPTEMBER 9AM



LEGEND:

-  SHADOW CAST BY PREVIOUS SUBMITTED SCHEME - JUNE 2016
-  ADDITIONAL SHADOW CAST AMENDMENT SCHEME - AUGUST 2016
-  AMENDMENT SCHEME OUTLINE - AUGUST 2016



3.0




SHADOW COMPARISON

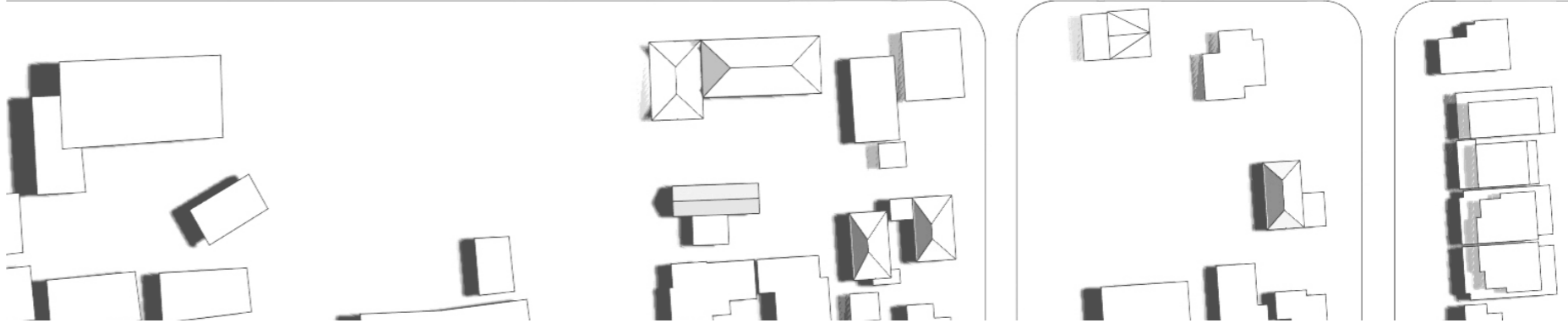
EXISTING (INCLUDING PREVIOUS SUBMITTED)

21 SEPTEMBER 12PM



LEGEND:

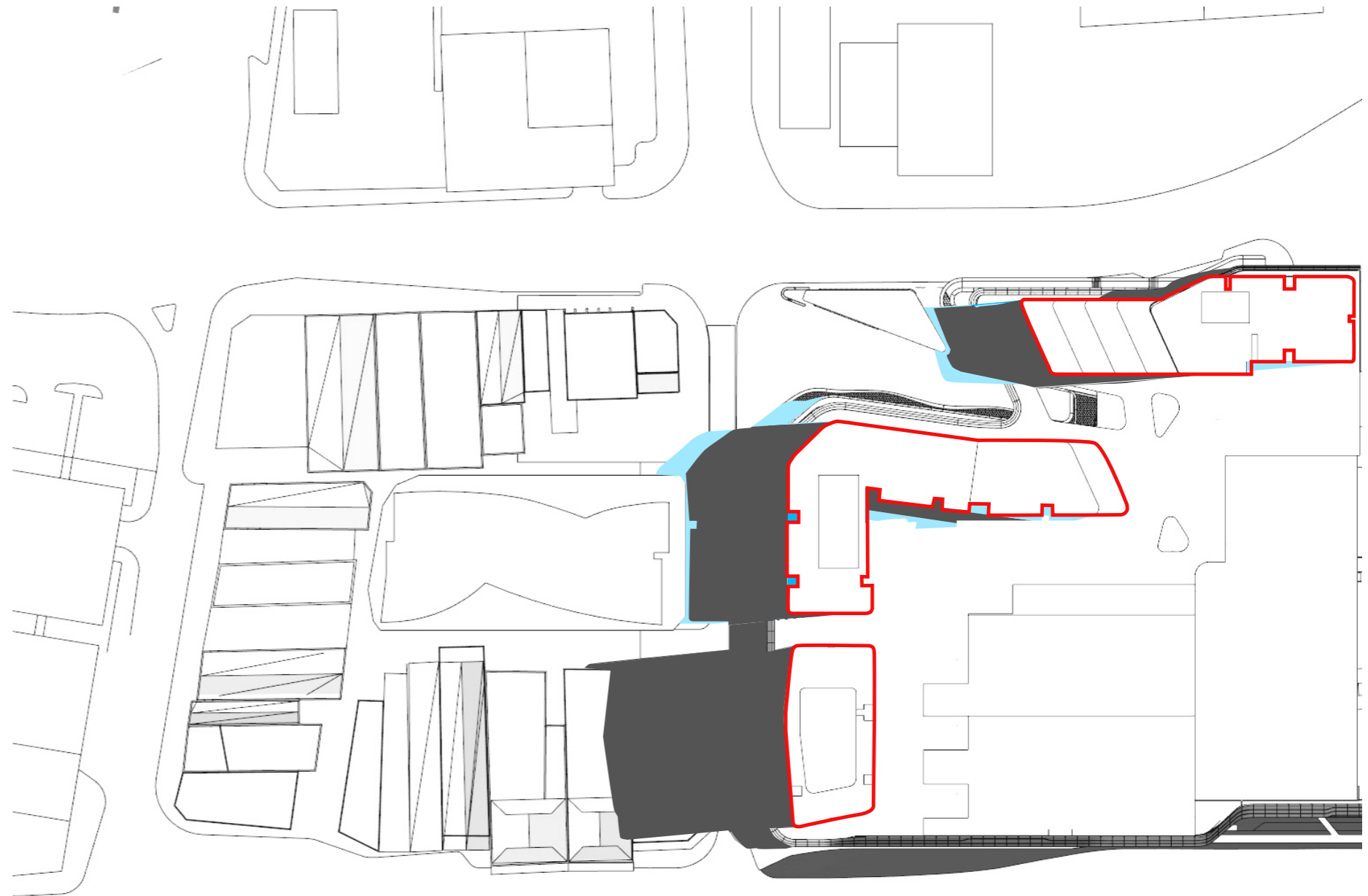
-  SHADOW CAST BY PREVIOUS SUBMITTED SCHEME - JUNE 2016
-  SHADOW CAST BY PLANNING PERMIT SCHEME - JUNE 2015
-  AMENDMENT SCHEME OUTLINE - AUGUST 2016






3.0 SHADOW COMPARISON

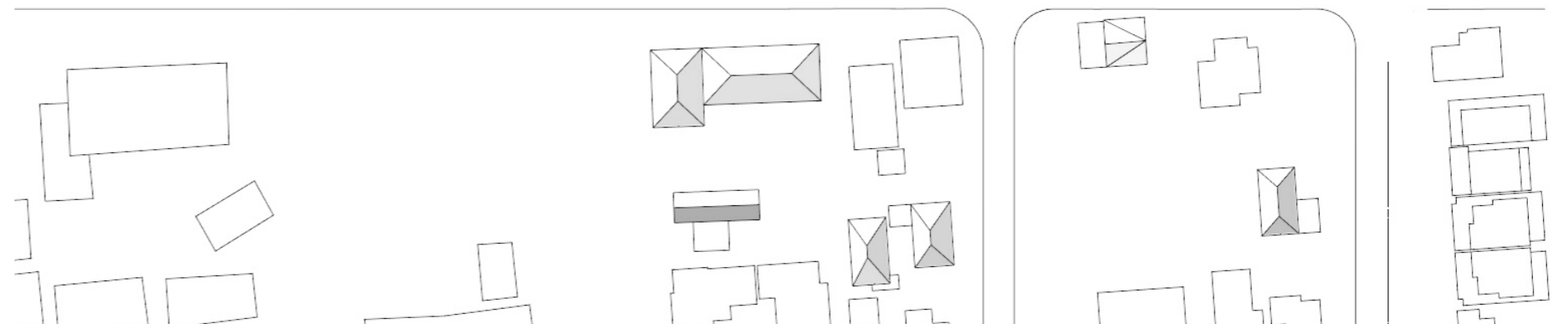
AMENDED SCHEME

21 SEPTEMBER 12PM



LEGEND:

-  SHADOW CAST BY PREVIOUS SUBMITTED SCHEME - JUNE 2016
-  ADDITIONAL SHADOW CAST AMENDMENT SCHEME - AUGUST 2016
-  AMENDMENT SCHEME OUTLINE - AUGUST 2016



3.0

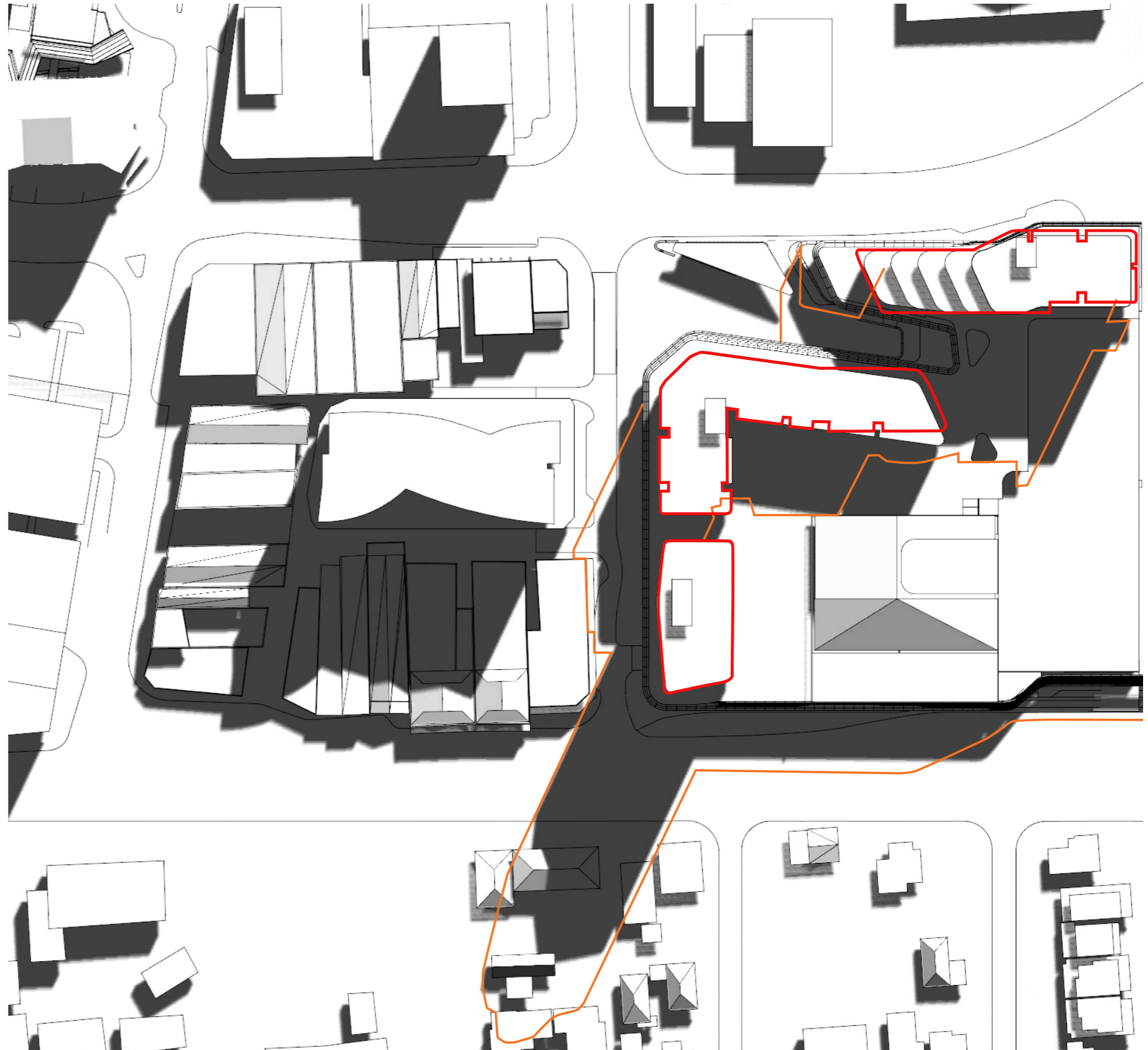
SHADOW COMPARISON

EXISTING (INCLUDING PREVIOUS SUBMITTED)

21 SEPTEMBER 3PM

LEGEND:

- SHADOW CAST BY PREVIOUS SUBMITTED SCHEME - JUNE 2016
- SHADOW CAST BY PLANNING PERMIT SCHEME - JUNE 2015
- AMENDMENT SCHEME OUTLINE - AUGUST 2016



3.0 SHADOW COMPARISON

AMENDED SCHEME

21 SEPTEMBER 3PM



LEGEND:

- SHADOW CAST BY PREVIOUS SUBMITTED SCHEME - JUNE 2016
- ADDITIONAL SHADOW CAST AMENDMENT SCHEME - AUGUST 2016
- AMENDMENT SCHEME OUTLINE - AUGUST 2016

