

THE GLEN RESIDENTIAL LANDSCAPE ARCHITECTURAL WORKS TOWN PLANNING AMENDMENT ISSUE

DRAWING REGISTER

15089-LA-001	COVER PAGE, DRAWING REGISTER & LOCATION PLAN
15089-LA-002	OVERALL LEGEND
15089-LA-201	LEVEL 02 LANDSCAPE PLAN
15089-LA-202	LEVEL 10 LANDSCAPE PLAN
15089-LA-601	PLANTING SCHEDULE
15089-LA-701	LANDSCAPE SECTIONS



1 LOCATION PLAN (Source Nearmap.com)
NTS

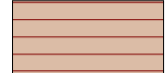
LANDSCAPE LEGEND

GENERAL EXTENTS & WORKS BOUNDARIES

--- GENERAL EXTENT OF WORKS

PAVEMENTS & SURFACES

PV-04B  PEDESTRIAN GRADE PRECAST CONCRETE PAVERS

PV-09  TIMBER DECK

WALLS & EDGES

LW-05  CONCRETE TERRACE SEATING WALL

FIXTURES & FURNITURE

FIX-01  CUSTOM TIMBER FURNITURE ELEMENTS

FIX-02  CUSTOM PICNIC SETTING

FIX-05  BBQ

FIX-07  STEEL FRAME WITH TIMBER BATTEN CANOPY TO BBQ AREAS

FIX-08  INDICATIVE EXERCISE AND INTEGRATED PLAY ELEMENTS

FIX-09  OUTDOOR SPA POOL

SOFTSCAPE & PLANTING

VEG-06  IRRIGATED LAWN

VEG-07  CLIMBING PLANTS

VEG-09  IRRIGATED RAISED PLANTER. HEIGHT VARIES

TREE PLANTING

 LIGHT CANOPY DECIDUOUS TREE

 DENSE CANOPY EVERGREEN TREE

WARNING



Services shown on this drawing are approximate only. The exact location is to be confirmed on site by contractor prior to commencement of work.

NOTES

Check all dimensions and site conditions prior to commencement of any work, the purchasing or ordering of any materials, fitting, plant services or equipment and the fabrication of any components.

Do not scale drawings - refer to figured dimensions only. Any discrepancies shall immediately be referred to the landscape architect for clarification.

All drawings may not be reproduced or distributed without prior permission from the landscape architect.

DATE	REV	AMENDMENTS
29.07.2016	P1	TOWN PLANNING AMENDMENT ISSUE
09.08.2016	P2	TOWN PLANNING AMENDMENT ISSUE

ASPECT Studios™

ASPECT Studios Pty Ltd
Level 1, 30-32 Essey Street
Collingwood VIC 3066
Australia
T 03 9417 6844
F 03 9417 6855
www.aspect.net.au
aspectmelbourne@aspect.net.au
ABN 11 120 219 561

MELBOURNE

CONSULTANTS

NH Architecture
Level 7
12-20 Flinders Lane
Melbourne
VIC, 3000

CLIENT

Frasers Property Australia
Level 9
484 St Kilda Road
Melbourne
VIC, 3004

PROJECT

THE GLEN RESIDENTIAL

STATUS

FOR APPROVAL
NOT FOR CONSTRUCTION

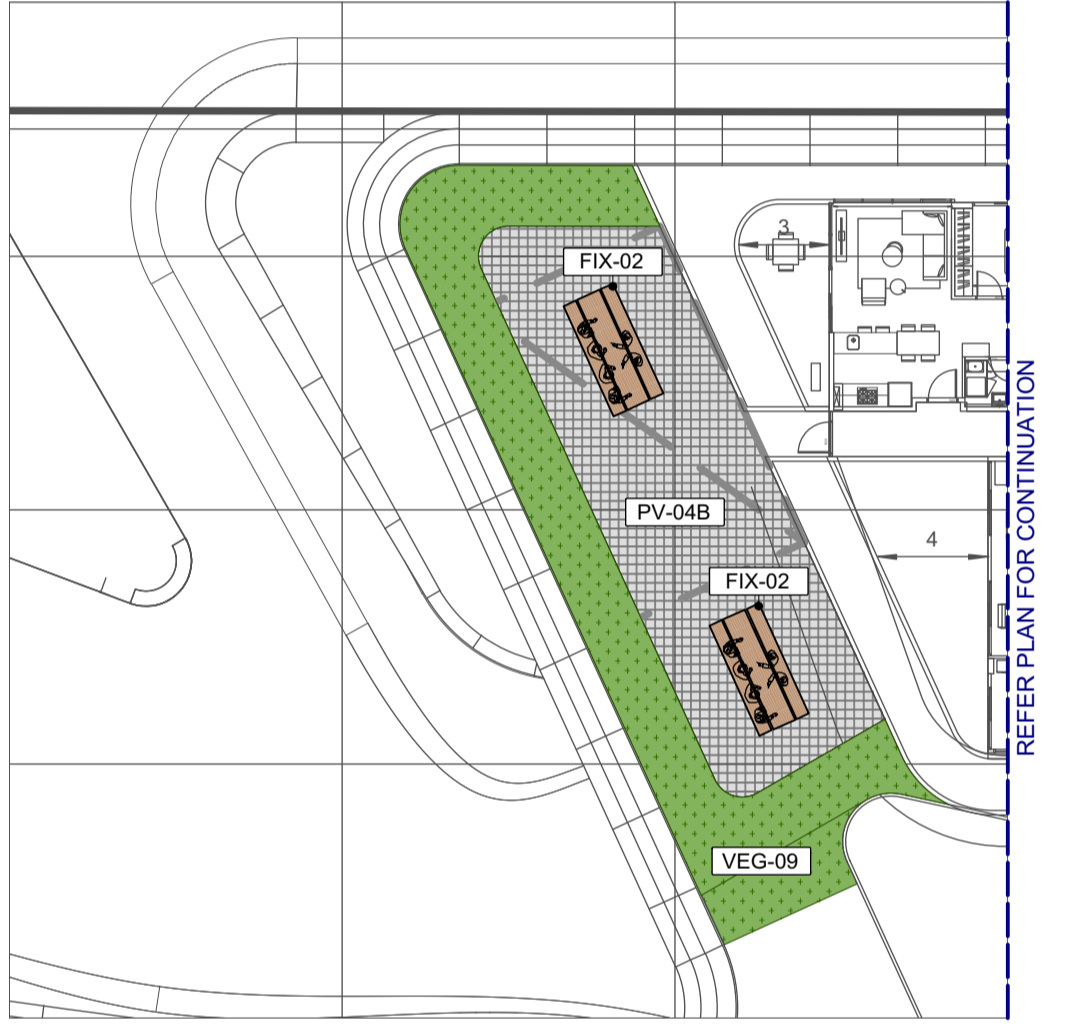
DRAWING

OVERALL LEGEND

DRAWN	CHECKED	SCALE A1 SCALE A3
ZL	LW	N/A

DRAWING NO.	REVISION
16062-LA-002	P2

F
G
H
J
K
L
M
N
P
Q
R
S
T
U



WARNING
Services shown on this drawing are approximate only. The exact location is to be confirmed on site by contractor prior to commencement of work.

NOTES
Check all dimensions and site conditions prior to commencement of any work, the purchasing or ordering of any materials, fitting, plant services or equipment and the fabrication of any components.
Do not scale drawings - refer to figured dimensions only. Any discrepancies shall immediately be referred to the landscape architect for clarification.
All drawings may not be reproduced or distributed without prior permission from the landscape architect.

DATE	REV	AMENDMENTS
29.07.2016	P1	TOWN PLANNING AMENDMENT ISSUE
09.08.2016	P2	TOWN PLANNING AMENDMENT ISSUE

ASPECT Studios™
Level 1, 30-32 Essey Street
Collingwood VIC 3066
Australia
T 03 9417 6844
F 03 9417 6855
www.aspect.net.au
aspectmelbourne@aspect.net.au
ABN 11 120 219 561

CONSULTANTS
NH Architecture
Level 7
12-20 Flinders Lane
Melbourne
VIC, 3000

CLIENT
Frasers Property Australia
Level 9
484 St Kilda Road
Melbourne
VIC, 3004

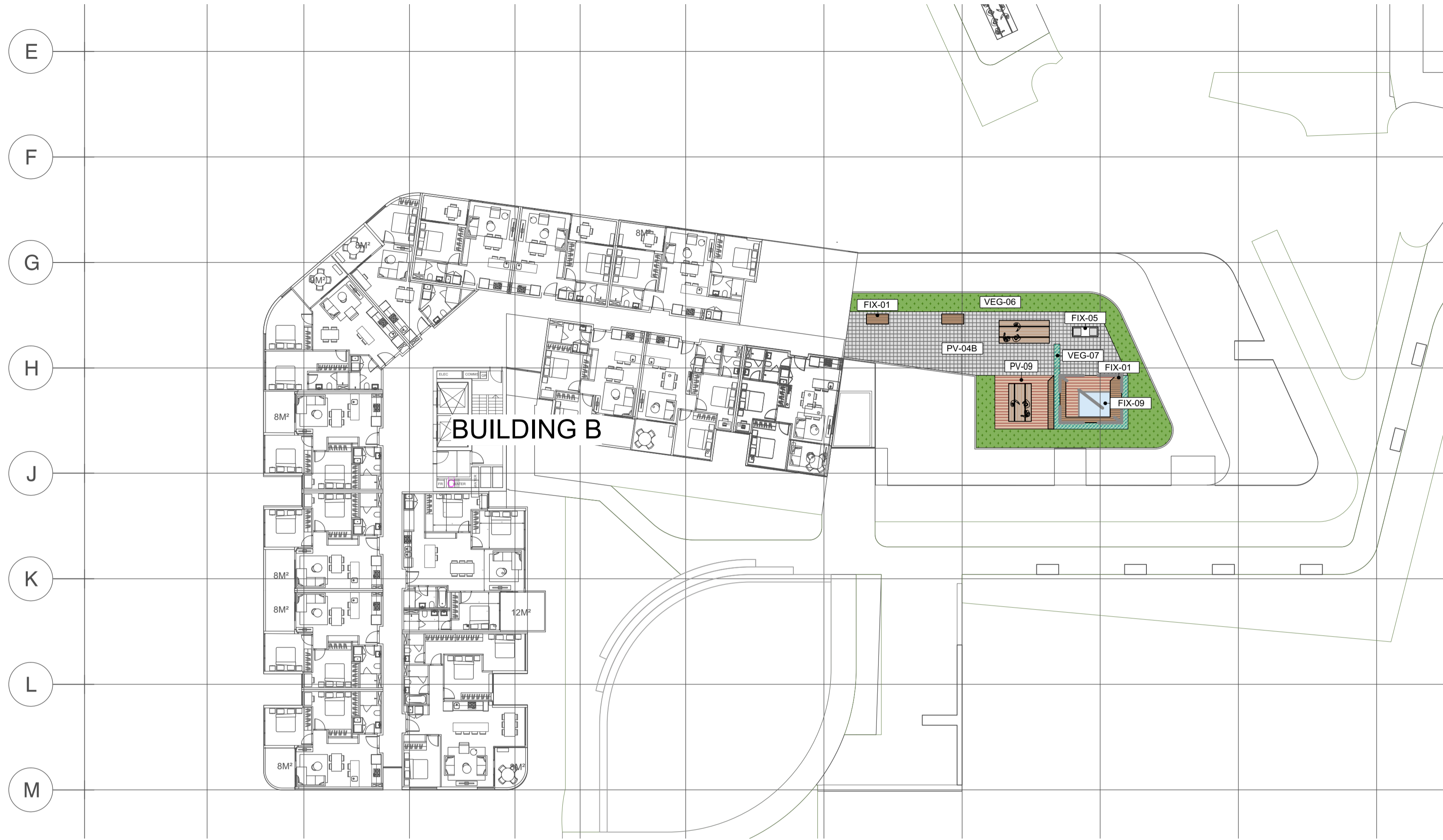
PROJECT
THE GLEN RESIDENTIAL

STATUS
FOR APPROVAL
NOT FOR CONSTRUCTION

DRAWING
LEVEL 02 LANDSCAPE PLAN

DRAWN ZL
CHECKED LW
SCALE A1 | SCALE A3 1:250 | 1:500
DRAWING NO. 16062-LA-201
REVISION P2

MELBOURNE



Services shown on this drawing are approximate only. The exact location is to be confirmed on site by contractor prior to commencement of work.

NOTES
 Check all dimensions and site conditions prior to commencement of any work, the purchasing or ordering of any materials, fitting, plant services or equipment and the fabrication of any components.
 Do not scale drawings - refer to figured dimensions only. Any discrepancies shall immediately be referred to the landscape architect for clarification.
 All drawings may not be reproduced or distributed without prior permission from the landscape architect.

DATE	REV	AMENDMENTS
29.07.2016	P1	TOWN PLANNING AMENDMENT ISSUE
09.08.2016	P2	TOWN PLANNING AMENDMENT ISSUE

ASPECT Studios™
 ASPECT Studios Pty Ltd
 Level 1, 30-32 Essey Street
 Collingwood VIC 3066
 Australia
 T 03 9417 6844
 F 03 9417 6855
 www.aspect.net.au
 aspectmelbourne@aspect.net.au
 ABN 11 120 219 561

MELBOURNE

CONSULTANTS
NH Architecture
 Level 7
 12-20 Flinders Lane
 Melbourne
 VIC, 3000

CLIENT
Frasers Property Australia
 Level 9
 484 St Kilda Road
 Melbourne
 VIC, 3004

PROJECT
 THE GLEN RESIDENTIAL

STATUS
 FOR APPROVAL
 NOT FOR CONSTRUCTION

DRAWING
 LEVEL 10 LANDSCAPE PLAN

DRAWN	CHECKED	SCALE A1 SCALE A3
ZL	LW	1:250 1:500

DRAWING NO. 16062-LA-202 **REVISION** P2

INDICATIVE PLANTING SCHEDULE - TREES

Code	Botanical Name	Common Name	Mature Size (HxW) m	Soil Volume m3	Install Size
Light Canopy Deciduous					
BRA ACE	<i>Brachychiton acerifolius</i>	Flame Tree	10 x 8	40	2.5m ht. 100L. 50mm cal.
ZEL SER	<i>Zelkova serrata</i>	Japanese Elm	10 x 8	40	2.5m ht. 100L. 50mm cal.
Dense Canopy Evergreen					
BAN MAR	<i>Banksia marginata</i>	Silver Banksia	9 x 4	25	1.8m ht. 45L. 30mm cal.
FIC HIL	<i>Ficus hillii</i>	Hills Weeping Fig	9 x 6	25	1.8m ht. 45L. 30mm cal.
MET EXC	<i>Metrosideros excelsa</i>	Pohutukawa	10-20 x 7-15	40	2.5m ht. 100L. 50mm cal.

TREES - LIGHT CANOPY DECIDUOUS



Brachychiton acerifolia



Zelkova serrata

TREES - DENSE CANOPY EVERGREEN



Banksia marginata



Ficus hillii



Metrosideros excelsa

INDICATIVE PLANTING SCHEDULE - SHRUBS & GROUNDCOVERS

Code	Botanical Name	Common Name	Mature Size (HxW) m	Install Size
ACA MIN	<i>Acacia 'Mini Cog'</i>	Mini Cog	0.5 x 0.5	140mm pot
ACA COG	<i>Acacia cognata 'Limelight'</i>	Limelight	0.5 x 1.0	140mm pot
AMM ALA	<i>Ammobium alatum</i>	Sand Flower	0.9 x 0.5	140mm pot
ART CIR	<i>Arthropodium cirratum</i>	New Zealand Rock Lily	1.0 x 0.8	140mm pot
AUS STI	<i>Austrostipa stipoides</i>	Coast Spear Grass	0.6 x 0.6	140mm pot
BAN MIN	<i>Banksia marginata</i>	Mini Marg	1.5 x 1.5	140mm pot
CAL SIE	<i>Callistemon sieberi</i>	River Bottlebrush	3-6 x 2-6	140mm pot
CAR APP	<i>Carex appressa</i>	Tall Sedge	0.8 x 0.7	140mm pot
CAR ROS	<i>Carpobrotus rossii</i>	Pigface	0.3 x 2	140mm pot
CHR API	<i>Chrysocephalum apiculatum</i>	Yellow Buttons	1.5 x 0.6	140mm pot
COR ALB	<i>Correa alba</i>	White Correa	1 x 1	140mm pot
DAM ROS	<i>Dampiera rosmarinifolia</i>	Wild Rosemary	0.5 x 0.8	140mm pot
DAR CIT	<i>Darwinia citriodora 'Sea Spray'</i>	Sea Spray	0.5 x 0.5	140mm pot
DIA CAE	<i>Dianella caerulea</i>	Blue Flax-Lily	0.5 x 1	140mm pot
ELE GLA	<i>Eremophila glabra 'Kalbarri Carpet'</i>	Fuchsia Emu Bush	0.15 x 2.0	140mm pot
FIC NOD	<i>Ficinia nodosa</i>	Knotted Club Rush	1 x 1	140mm pot
GRE ROY	<i>Grevillea 'Royal Mantle'</i>	Royal Mantle Grevillea	0.25 x 4.0	140mm pot
LIR MUS	<i>Liriope muscari</i>	Lily Turf	0.6 x 0.6	140mm pot
LOM LON	<i>Lomandra longifolia 'Tanika'</i>	Tanika	0.65 x 0.8	140mm pot
MYO PAR	<i>Myoporum parvifolium</i>	Creeping boobialla	0.3 x 0.5	140mm pot
PAN PAN	<i>Pandorea pandorana</i>	Wonga Wonga Vine	Climber	140mm pot
PER CHA	<i>Persoonia chamaeepitys</i>	Mountain Geebung	0.2 x 1.0	140mm pot
POA LAB	<i>Poa labillardieri</i>	Common Tussock Grass	0.8 x 0.8	140mm pot
SCA ALB	<i>Scaevola albida</i>	Scaevola	0.3 x 1.0	140mm pot
SED SPA	<i>Sedum spathulifolium</i>	Cape Blanco	1.5 x 0.6	140mm pot
SEN SER	<i>Senecio serpens</i>	Blue Chalk Sticks	0.15 x 0.6	140mm pot
SYZ AUS	<i>Syzygium australe</i>	Lilly Pilly	1.5 x 1.5	140mm pot
TRA JAS	<i>Trachelospermum jasminoides</i>	Chinese Star Jasmine	Climber	140mm pot
WES FRU	<i>Westringia fruticosa 'Mundi'</i>	Native Rosemary	0.4 x 1.0	140mm pot

SHRUBS & GROUNDCOVERS



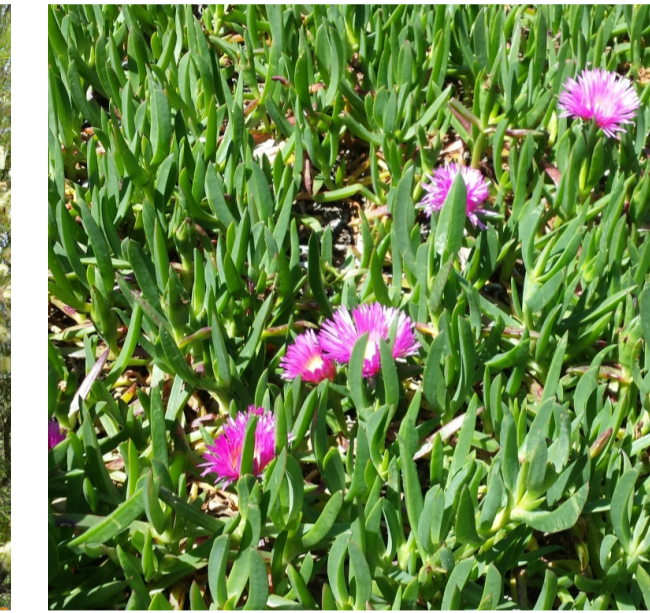
Acacia cognata 'Limelight'



Austrostipa stipoides



Callistemon sieberi



Carpobrotus rossii



Correa alba



Darwinia citriodora 'Sea Spray'



Eremophila glabra 'Kalbarri Carpet'



Liriope muscari



Lomandra Tanika



Myoporum parvifolium



Pandorea pandorana



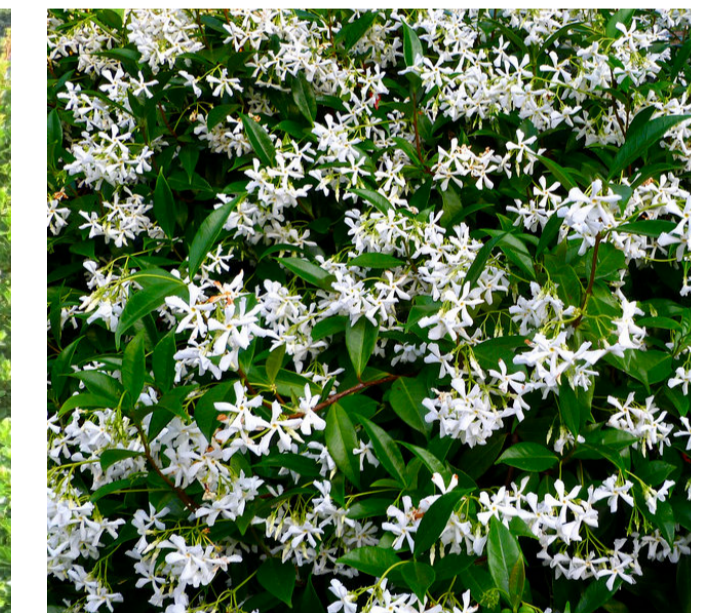
Poa labillardieri



Sedum spathulifolium



Syzygium australe



Trachelospermum jasminoides



Services shown on this drawing are approximate only. The exact location is to be confirmed on site by contractor prior to commencement of work.

NOTES
 Check all dimensions and site conditions prior to commencement of any work, the purchasing or ordering of any materials, fitting, plant services or equipment and the fabrication of any components.
 Do not scale drawings - refer to figured dimensions only. Any discrepancies shall immediately be referred to the landscape architect for clarification.
 All drawings may not be reproduced or distributed without prior permission from the landscape architect.

DATE	REV	AMENDMENTS
29.07.2016	P1	TOWN PLANNING AMENDMENT ISSUE
09.08.2016	P2	TOWN PLANNING AMENDMENT ISSUE

ASPECT Studios™
 ASPECT Studios Pty Ltd
 Level 1, 30-32 Essey Street
 Collingwood VIC 3066
 Australia
 T 03 9417 6844
 F 03 9417 6855
 www.aspect.net.au
 aspectmelbourne@aspect.net.au
 ABN 11 120 219 561

MELBOURNE

CONSULTANTS
NH Architecture
 Level 7
 12-20 Flinders Lane
 Melbourne
 VIC, 3000

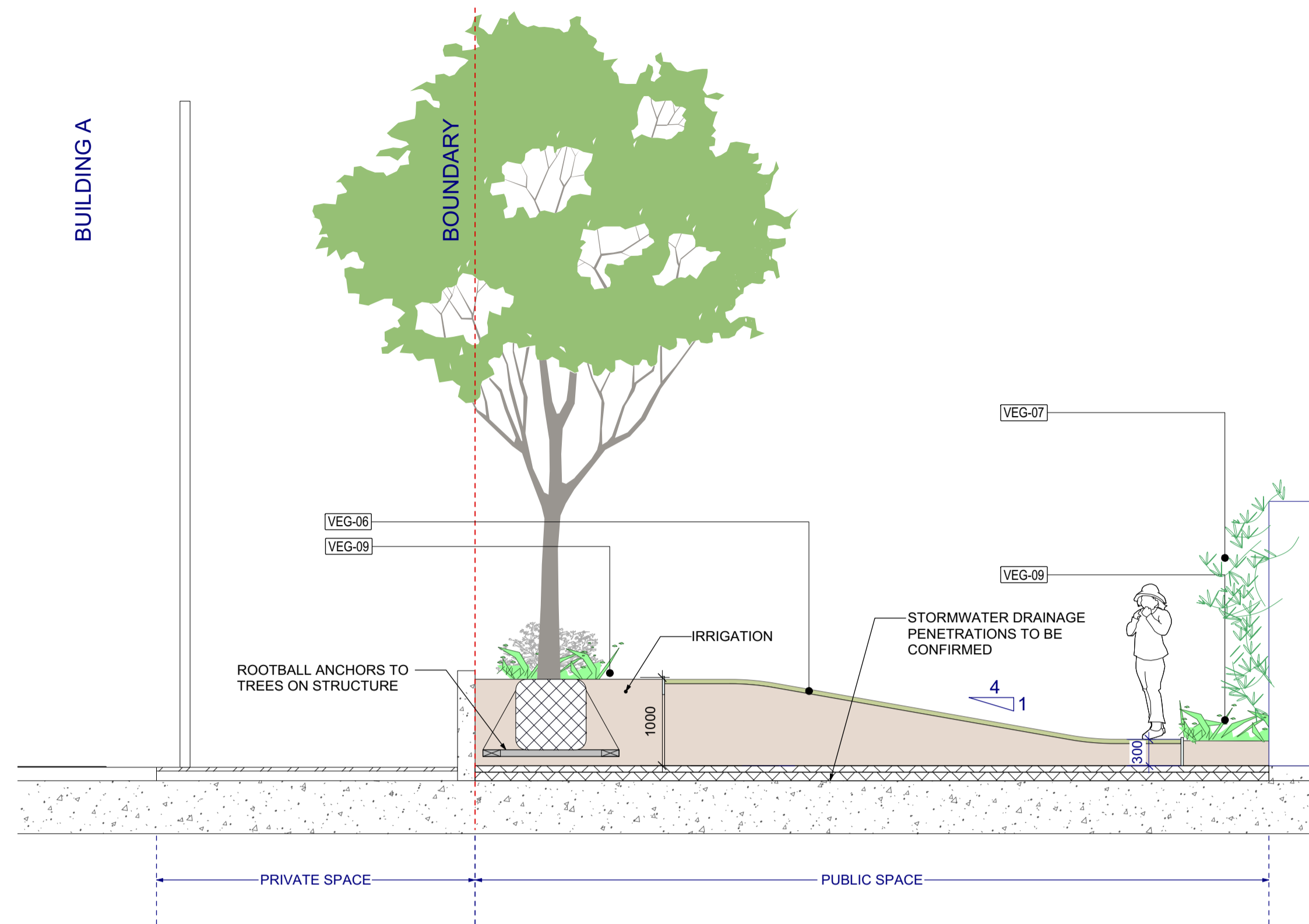
CLIENT
Frasers Property Australia
 Level 9
 484 St Kilda Road
 Melbourne
 VIC, 3004

PROJECT
 THE GLEN RESIDENTIAL

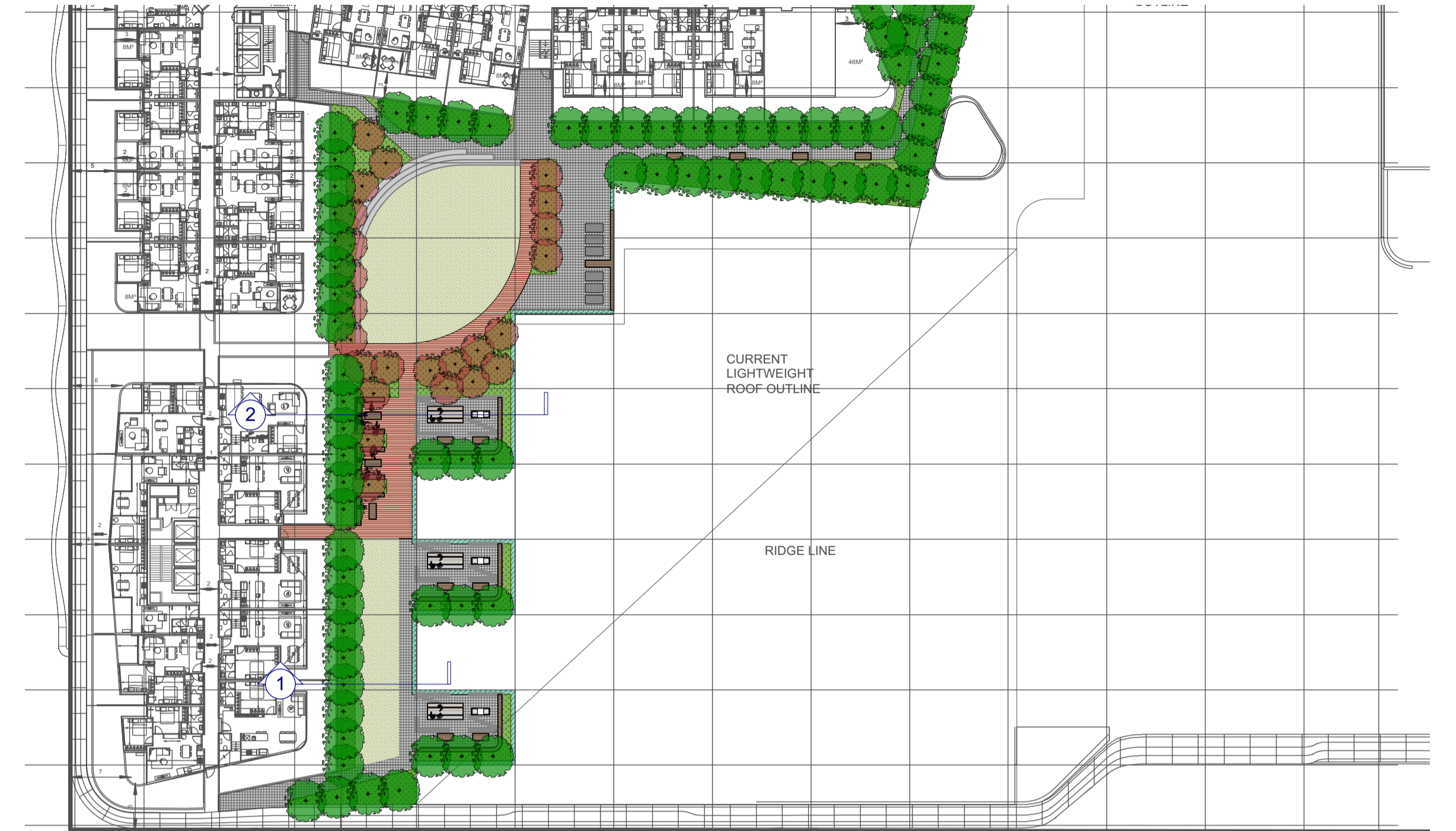
STATUS
 FOR APPROVAL
 NOT FOR CONSTRUCTION

DRAWING
 PLANTING SCHEDULE

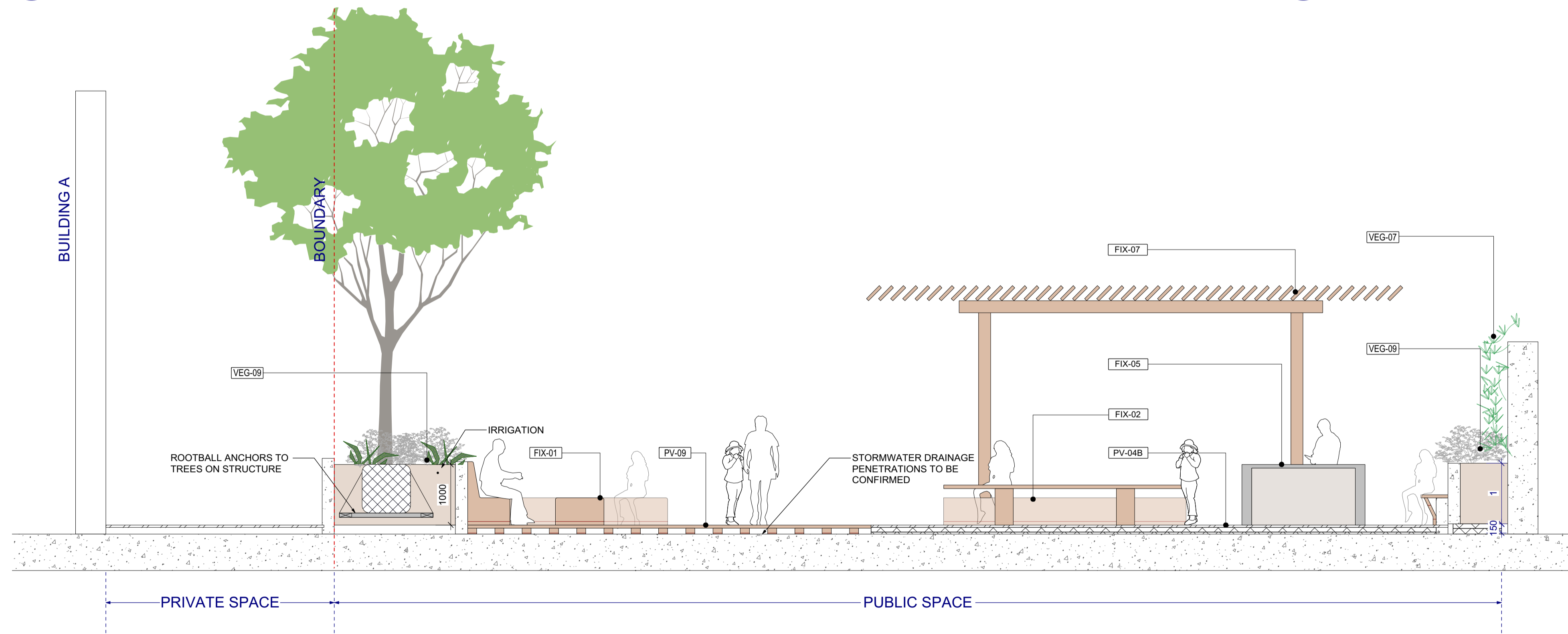
DRAWN	CHECKED	SCALE A1 SCALE A3
ZL	ET	N/A N/A
DRAWING NO.		REVISION
16062-LA-603		P2



1 LEVEL 02 SECTION 1
1:50 @ A1; 1:100 @ A3



3 KEY PLAN
1:500 @ A1; 1:1000 @ A3



2 LEVEL 02 SECTION 2
1:50 @ A1; 1:100 @ A3



Services shown on this drawing are approximate only. The exact location is to be confirmed on site by contractor prior to commencement of work.

NOTES

Check all dimensions and site conditions prior to commencement of any work, the purchasing or ordering of any materials, fitting, plant services or equipment and the fabrication of any components.

Do not scale drawings - refer to figured dimensions only. Any discrepancies shall immediately be referred to the landscape architect for clarification.

All drawings may not be reproduced or distributed without prior permission from the landscape architect.

DATE	REV	AMENDMENTS
29.07.2016	P1	TOWN PLANNING AMENDMENT ISSUE
09.08.2016	P2	TOWN PLANNING AMENDMENT ISSUE

ASPECT Studios™

ASPECT Studios Pty Ltd
Level 1, 30-32 Essey Street
Collingwood VIC 3066
Australia
T 03 9417 6844
F 03 9417 6855
www.aspect.net.au
aspectmelbourne@aspect.net.au
ABN 11 120 219 561

MELBOURNE

CONSULTANTS
NH Architecture
Level 7
12-20 Flinders Lane
Melbourne
VIC, 3000

CLIENT
Fraser's Property Australia
Level 9
484 St Kilda Road
Melbourne
VIC, 3004

PROJECT
THE GLEN RESIDENTIAL

STATUS
FOR APPROVAL
NOT FOR CONSTRUCTION

DRAWING
LANDSCAPE SECTIONS

DRAWN: JH
CHECKED: ET
SCALE A1 | SCALE A3: 1:50 | 1:100
DRAWING NO.: 16062-LA-701
REVISION: P2