

## Infill Planting Locations




The table below lists the details of the locations where trees will be planted in currently vacant sites along Alderbrook Avenue, Mulgrave. For further location details, please refer to the street map outlining all removals, replacements and infill planting.

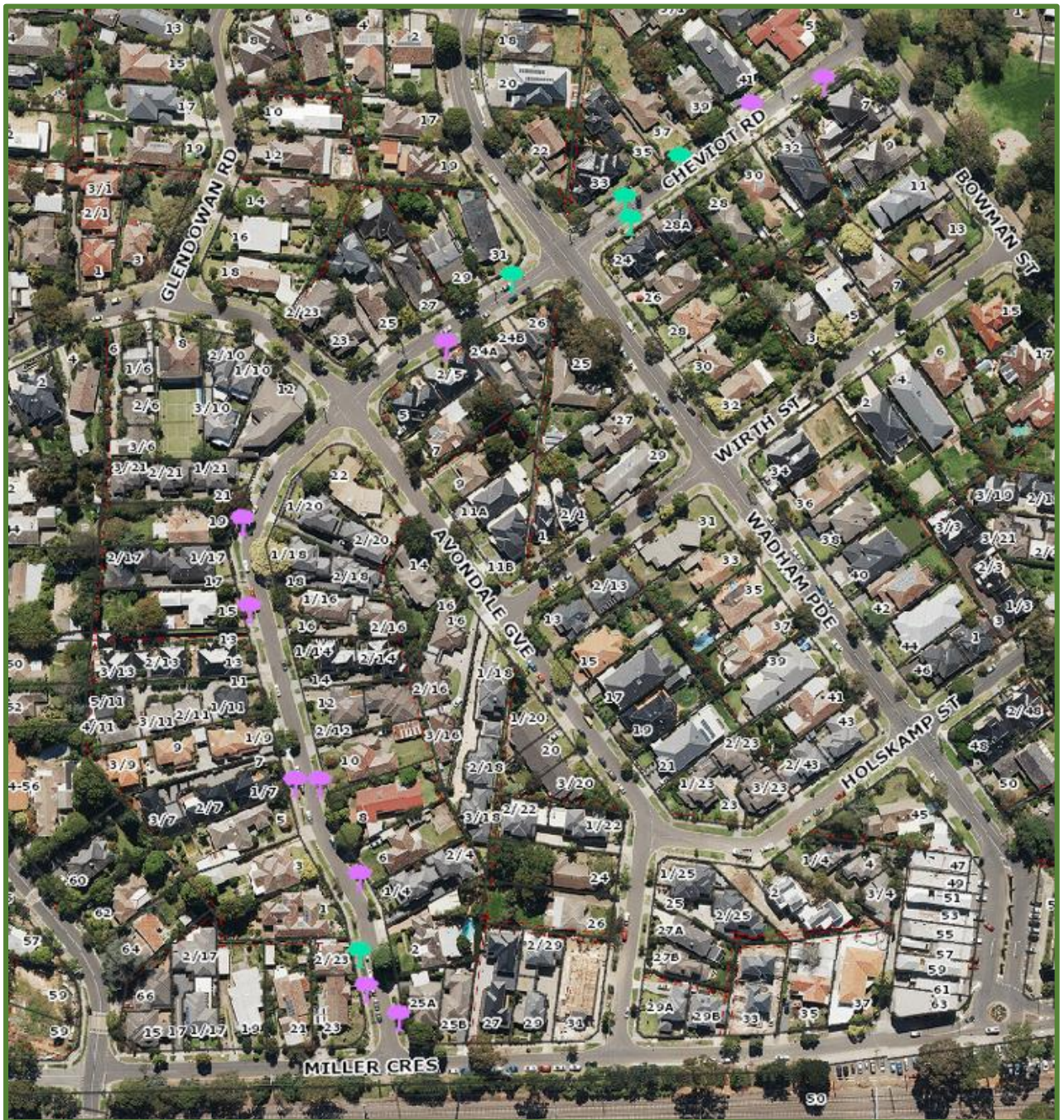
No.	Street Address	Assessment Outcome	Follow Up Action
1	31 Cheviot Road	Vacant Site	New tree to be planted
2	33 Cheviot Road	Vacant Site	New tree to be planted
3	37 Cheviot Road	Vacant Site	New tree to be planted
4	23a Miller Crescent	Vacant Site	New tree to be planted
5	24 Wadham Parade	Vacant Site	New tree to be planted

## Street Overview

The map below details the removals, replacements and infill plantings. All other trees have been assessed as having more than two years' useful life and will be retained.

### Street Overview Legend

-  Tree to be Removed and Replaced
-  New Tree
-  Tree Removed with No Replacement



## Proposed Tree Species Options

Council's Street Tree Strategy team has created three (3) options to choose from using the most appropriate species for the location.

### Option 1 – Single species (both sides of the road)

#### *Lagerstroemia indica* x *L. fauriei* 'Sioux' (Sioux Upright Crepe Myrtle)



Creating quite the visual impact over a lengthy period, this variety offers masses of intense, pink flowers over summer, followed by stunning, rich foliage colour in tones of yellow, red and orange through autumn, before shedding its leaves. When mature, the bark of this variety will peel, creating a mottled effect to reveal the beautiful caramel-pink colour of its under bark.

#### **Mature Size**

**Height x Width (m):** 5m x 4 m

**Form:** Round

**Option 2 – Single species (both sides of the road)**

***Corymbia eximia* 'Nana' (Dwarf Yellow Bloodwood)**



The foliage is broad with a strong green colour and may turn a paler yellow/green in the colder months. In spring the tree puts on an eye-catching display covering itself in creamy yellow flowers, attracting nectar-loving birds.

**Mature Size**

**Height x Width (m):** 6 – 8 x 4 – 6 m

**Form:** Round