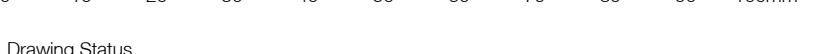




PERSPECTIVE VIEW - REGENT STREET FRONT

**Disclaimer:** This drawing and design is subject to copyright and may not be reproduced without prior written consent. Contractor to verify all dimensions on site before commencing work. Report all discrepancies to Spowers prior to construction. Do not scale critical dimensions. Check this drawing has been printed to scale by measuring on the ruler below before measuring scaled dimensions.



Drawing Status  
**TOWN PLANNING ISSUE**

Revisions  
A 15.08.2016 ISSUE FOR TOWN PLANNING

Notes

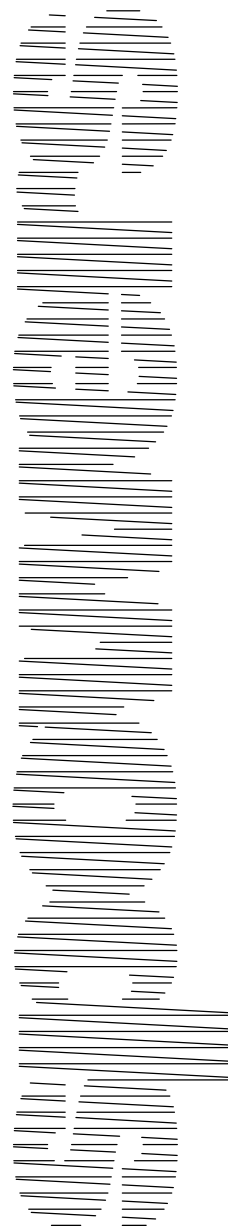
Godfrey Spowers (Victoria) Pty Ltd  
1/460 Collins Street, Melbourne, Victoria, Australia, 3000  
T: +61 3 9614 6144 F: +61 3 9629 6791  
info@spowers.com.au spowers.com.au

Client  
**JAPARA HEALTHCARE**  
JAPARA HEALTHCARE LIMITED  
21 Building, Level 4, 1 Southbank Boulevard  
Southbank, VIC 3006  
T: +61 3 9649 2100 www.japarahhealthcare.com.au

Project  
**NEW AGED CARE ACCOMMODATION  
35-39 REGENT STREET  
MOUNT WAVERLEY VICTORIA 3149**

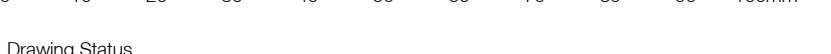
Drawing:  
**PERSPECTIVE VIEW - SHEET 1**

Drawn	Checked	Approved
JO	PS	RP
Job Number	Date	Scale @ E1
2015017	15.08.2016	NTS
Drawing Number	Revision	
TP.29	A	





**Disclaimer:** This drawing and design is subject to copyright and may not be reproduced without prior written consent. Contractor to verify all dimensions on site before commencing work. Report all discrepancies to Spowers prior to construction. Do not scale critical dimensions. Check this drawing has been printed to scale by measuring on the ruler below before measuring scaled dimensions.



Drawing Status  
**TOWN PLANNING ISSUE**

Revisions  
A 15.08.2016 ISSUE FOR TOWN PLANNING

Notes



PERSPECTIVE VIEW - REGENT STREET (VIEW FROM SOUTH) 1

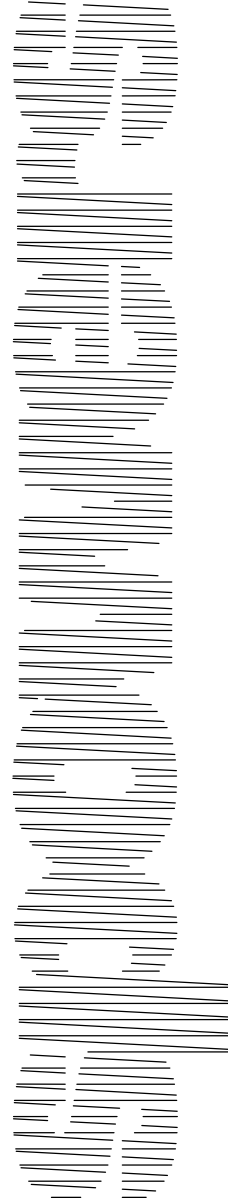


PERSPECTIVE VIEW - REGENT STREET (VIEW FROM SOUTH) 2



PERSPECTIVE VIEW - REGENT STREET (VIEW FROM NORTH)

Godfrey Spowers (Victoria) Pty Ltd  
1/460 Collins Street, Melbourne, Victoria, Australia, 3000  
T: +61 3 9614 6144 F: +61 3 9629 6791  
info@spowers.com.au spowers.com.au



Client  
**JAPARA HEALTHCARE**

JAPARA HEALTHCARE LIMITED  
01 Building, Level 4, 1 Southbank Boulevard  
Southbank, VIC 3006  
T: +61 3 9649 2100 www.japarahhealthcare.com.au

Project  
**NEW AGED CARE ACCOMMODATION  
35-39 REGENT STREET  
MOUNT WAVERLEY VICTORIA 3149**

Drawing  
**PERSPECTIVE VIEW - SHEET 2**

Drawn	Checked	Approved
JO	PS	RP
Job Number	Date	Scale
2015017	15.08.2016	NTS
Drawing Number	Revision	
TP.30		A

TP.30

A