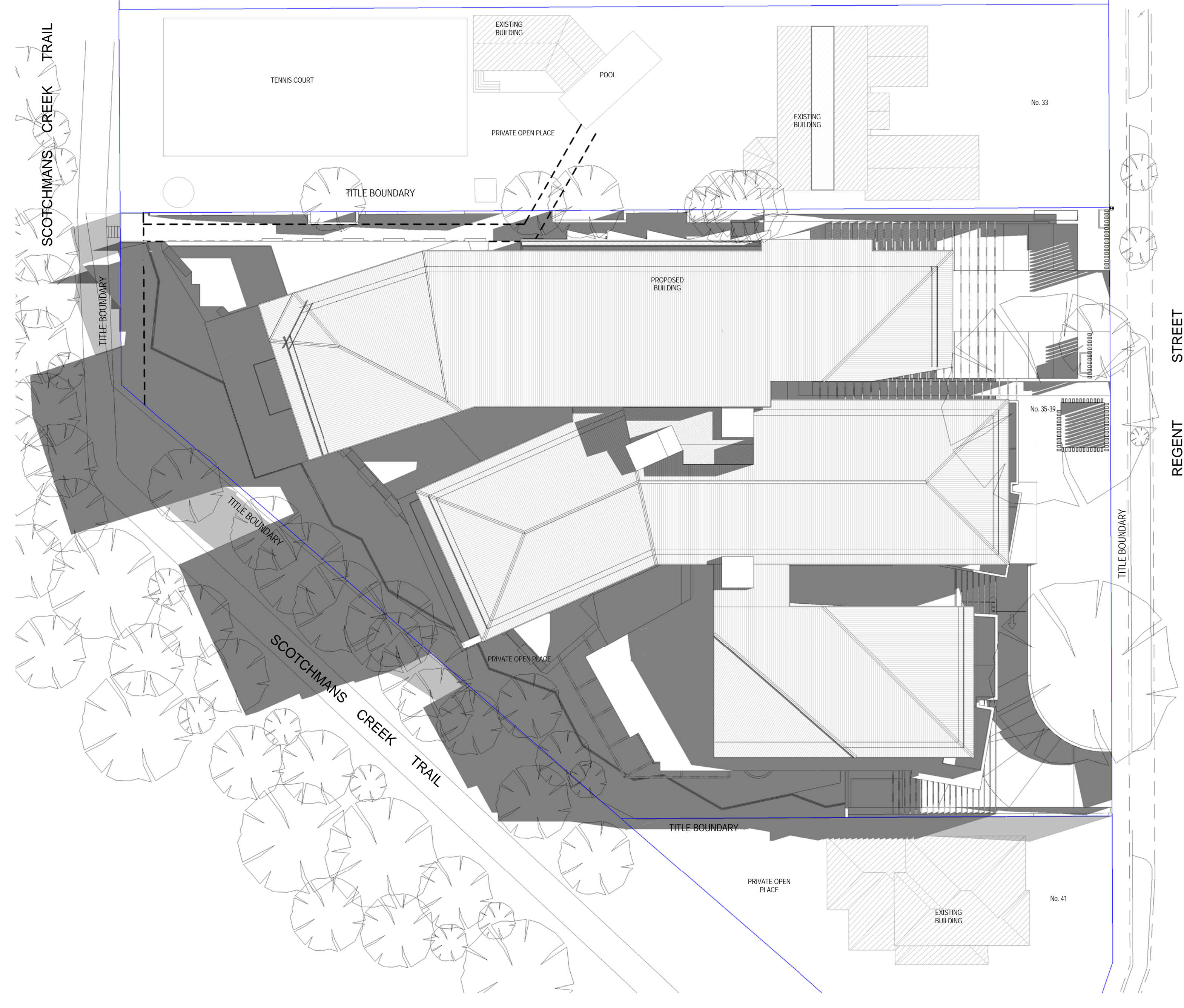
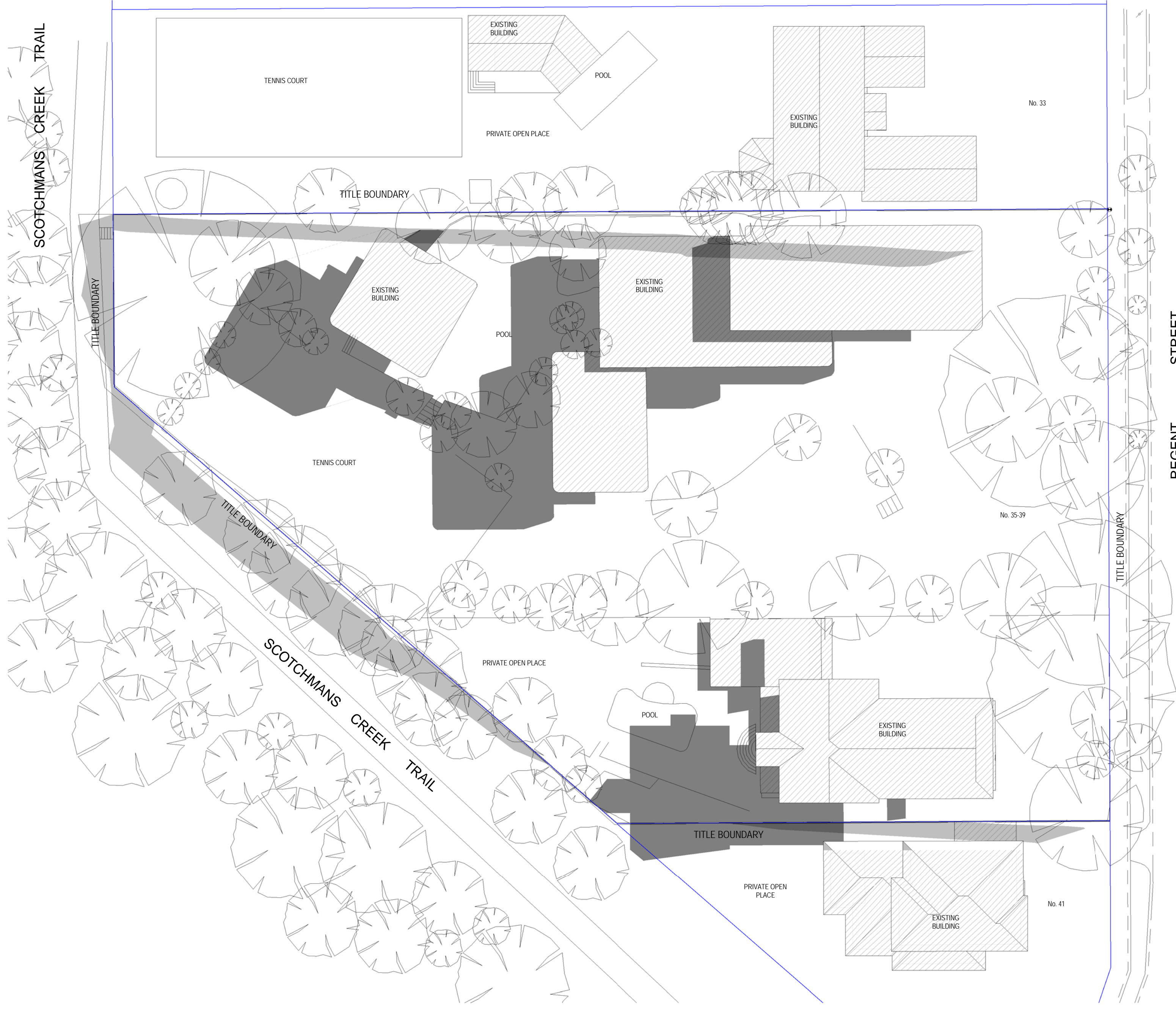


Disclaimer: This drawing and design is subject to copyright and may not be reproduced without prior written consent. Contractor to verify all dimensions on site before commencing work. Report all discrepancies to Spowers prior to construction. Do not scale critical dimensions. Check this drawing has been printed to scale by measuring on the ruler below before measuring scaled dimensions.

Drawing Status
TOWN PLANNING ISSUE

Revisions
A 15.08.2016 ISSUE FOR TOWN PLANNING

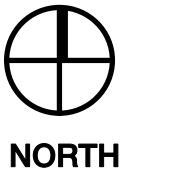
Notes



SEPTEMBER 22 - 9am (EXISTING)

SEPTEMBER 22 - 9am (PROPOSED)

Godfrey Spowers (Victoria) Pty Ltd
1/460 Collins Street Melbourne Victoria Australia 3000
T +61 3 9614 6144 F +61 3 9629 6791
info@spowers.com.au spowers.com.au



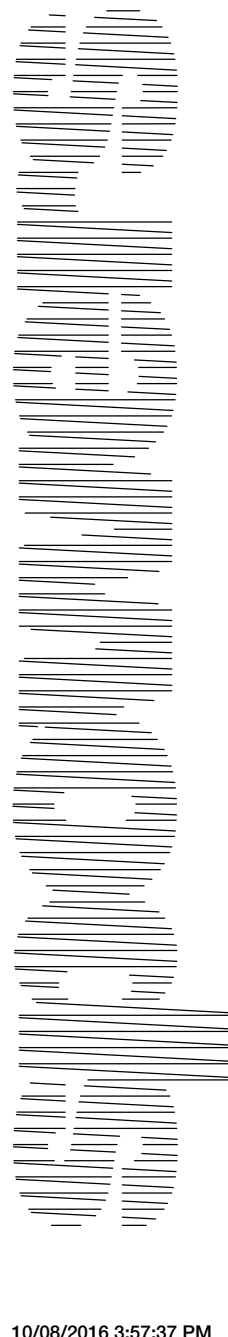
Client
JAPARA HEALTHCARE
JAPARA HEALTHCARE LIMITED
21 Building, Level 4, 1 Southbank Boulevard
Southbank, VIC 3006
T: +61 3 9649 2100 www.japarahhealthcare.com.au

Project
**NEW AGED CARE ACCOMMODATION
35-39 REGENT STREET
MOUNT WAVERLEY VICTORIA 3149**

Drawing
**SHADOW DIAGRAMS - 9 am
SEPTEMBER 22**

| Drawn | Checked | Approved |
|----------------|------------|------------|
| WT | PS | RP |
| Job Number | Date | Scale @ E1 |
| 2015017 | 15.08.2016 | 1 : 300 |
| Drawing Number | Revision | |

TP.23 **A**

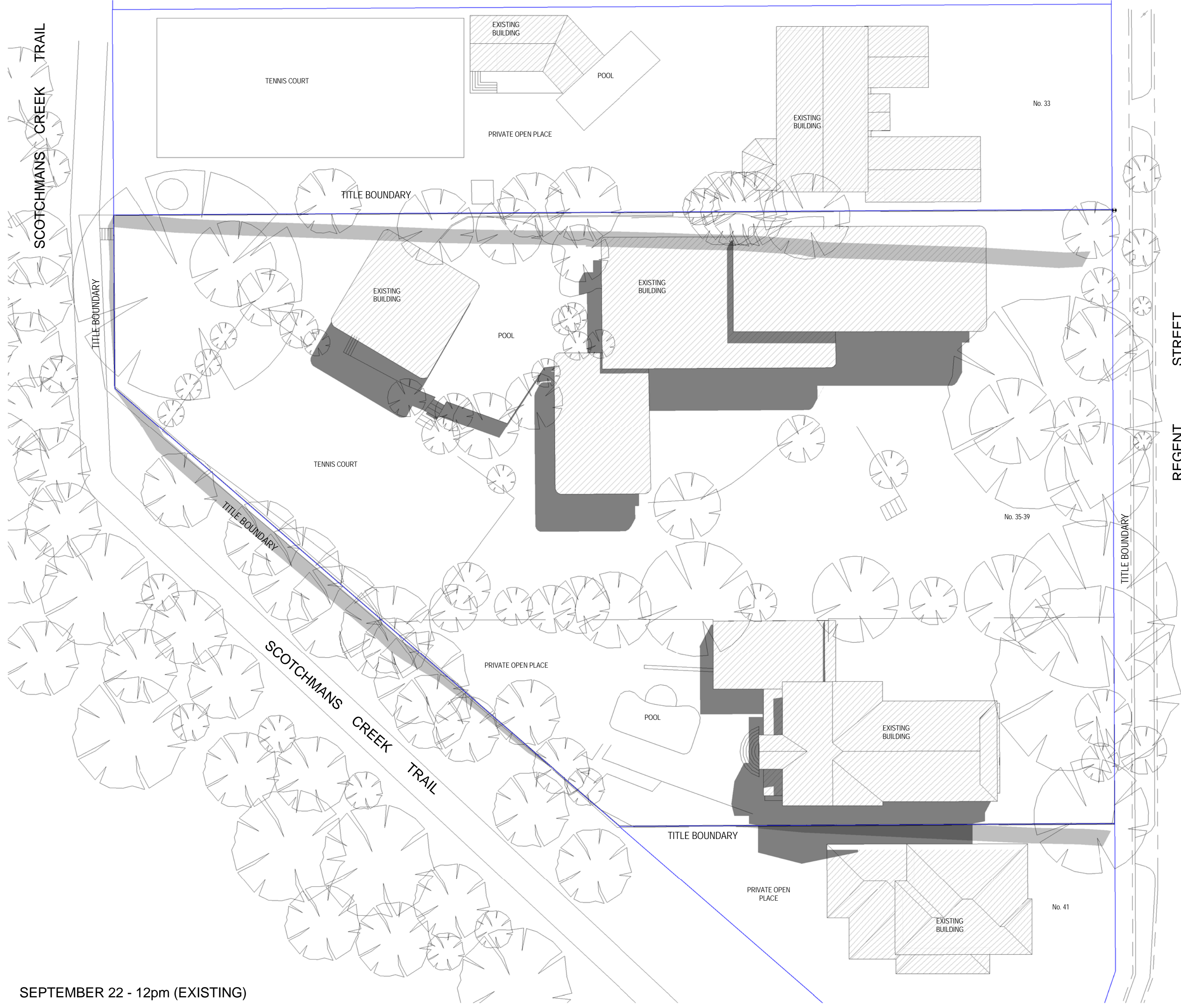


Disclaimer: This drawing and design is subject to copyright and may not be reproduced without prior written consent. Contractor to verify all dimensions on site before commencing work. Report all discrepancies to Spowers prior to construction. Do not scale critical dimensions. Check this drawing has been printed to scale by measuring on the ruler below before measuring scaled dimensions.

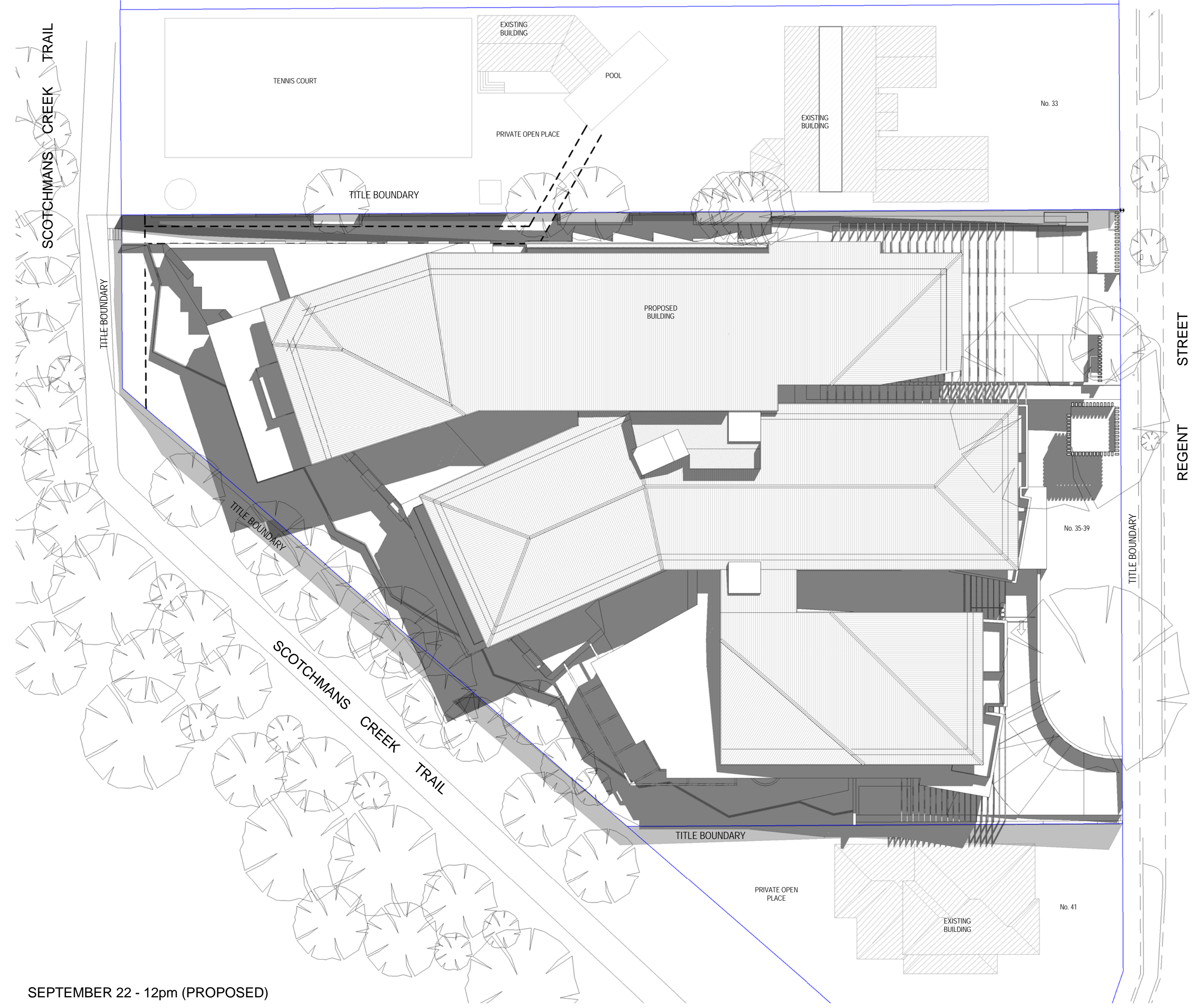
Drawing Status
TOWN PLANNING ISSUE

Revisions
A 15.08.2016 ISSUE FOR TOWN PLANNING

Notes

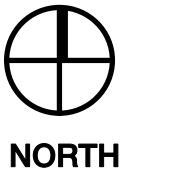


SEPTEMBER 22 - 12pm (EXISTING)



SEPTEMBER 22 - 12pm (PROPOSED)

Godfrey Spowers (Victoria) Pty Ltd
1/460 Collins Street Melbourne Victoria Australia 3000
T +61 3 9614 6144 F +61 3 9629 6791
info@spowers.com.au spowers.com.au



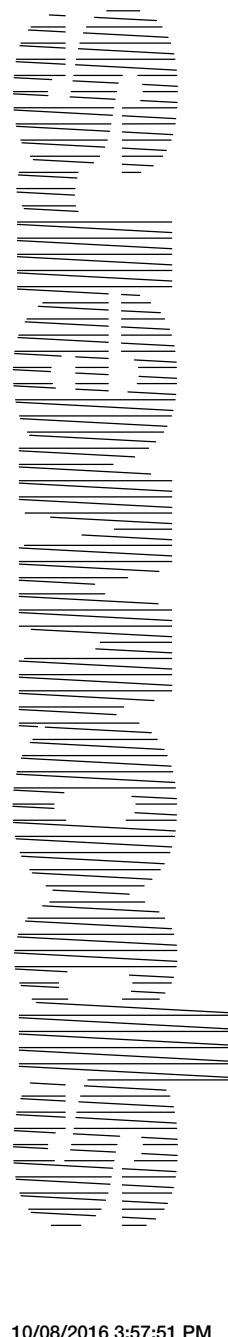
Client
JAPARA HEALTHCARE
JAPARA HEALTHCARE LIMITED
21 Building, Level 4, 1 Southbank Boulevard
Southbank, VIC 3006
T: +61 3 9649 2100 www.japarahhealthcare.com.au

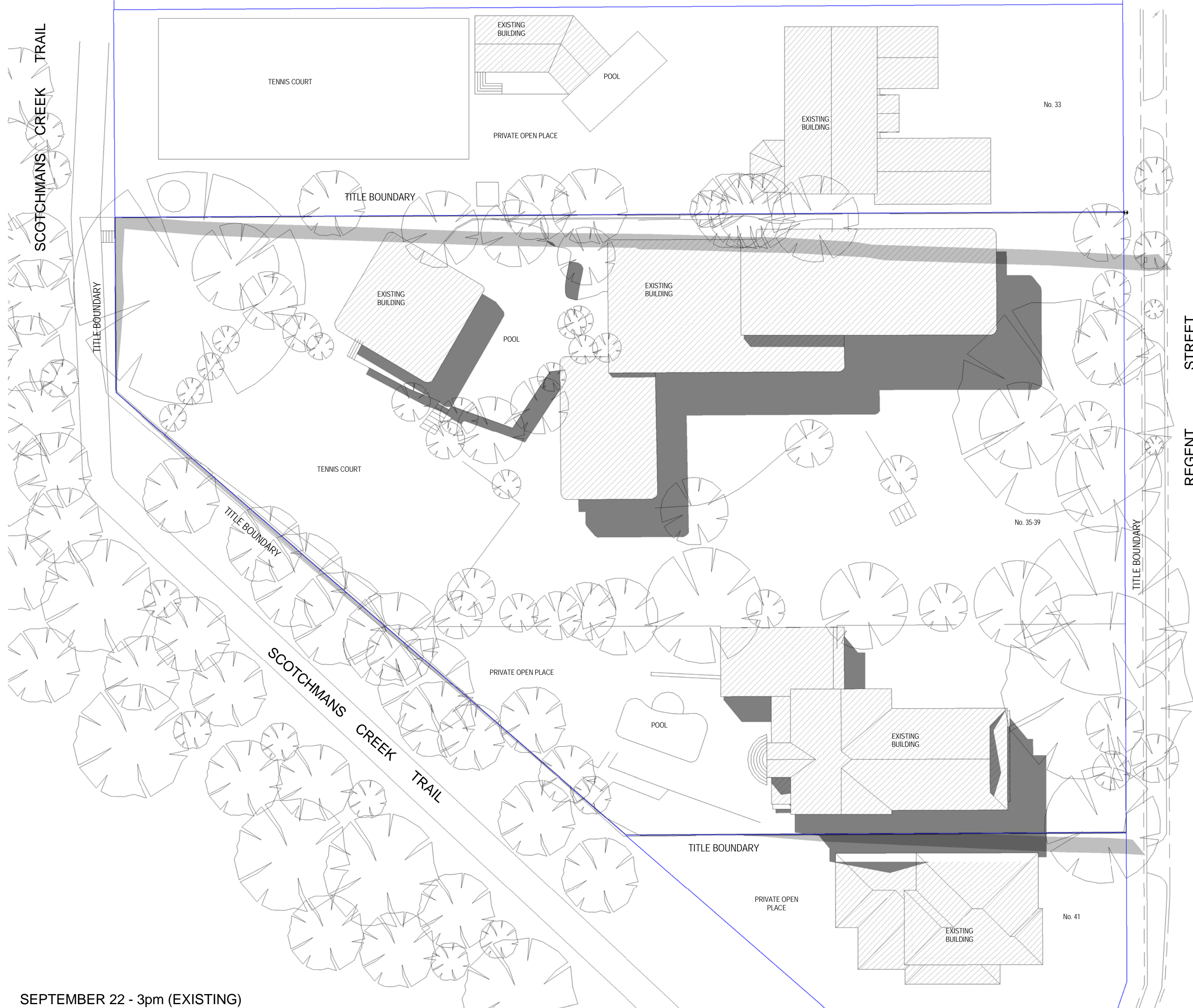
Project
**NEW AGED CARE ACCOMMODATION
35-39 REGENT STREET
MOUNT WAVERLEY VICTORIA 3149**

Drawing
**SHADOW DIAGRAMS - 12 pm
SEPTEMBER 22**

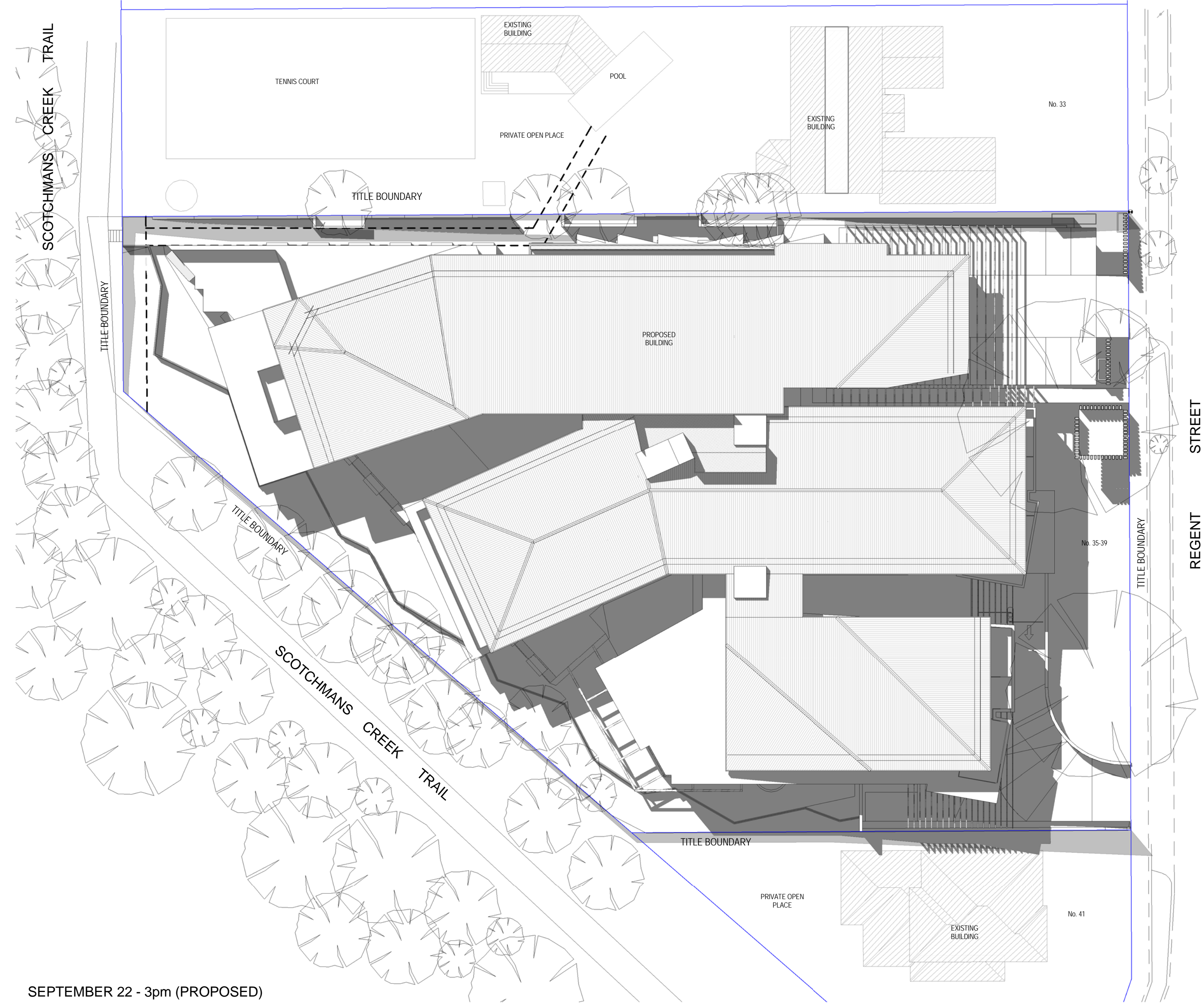
| Drawn | Checked | Approved |
|----------------|------------|------------|
| Author | Checker | RP |
| Job Number | Date | Scale @ E1 |
| 2015017 | 15.08.2016 | 1 : 300 |
| Drawing Number | Revision | |

TP.24 **A**



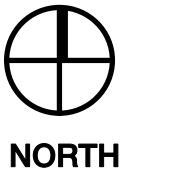


SEPTEMBER 22 - 3pm (EXISTING)



SEPTEMBER 22 - 3pm (PROPOSED)

Godfrey Spowers (Victoria) Pty Ltd
1/460 Collins Street Melbourne Victoria Australia 3000
T +61 3 9614 6144 F +61 3 9629 6791
info@spowers.com.au spowers.com.au



Client
JAPARA HEALTHCARE
JAPARA HEALTHCARE LIMITED
21 Building, Level 4, 1 Southbank Boulevard
Southbank, VIC 3006
T: +61 3 9649 2100 www.japarahhealthcare.com.au

Project
**NEW AGED CARE ACCOMMODATION
35-39 REGENT STREET
MOUNT WAVERLEY VICTORIA 3149**

Drawing
**SHADOW DIAGRAMS - 3 pm
SEPTEMBER 22**

| Drawn | Checked | Approved |
|----------------|------------|------------|
| Author | Checker | RP |
| Job Number | Date | Scale @ E1 |
| 2015017 | 15.08.2016 | 1 : 300 |
| Drawing Number | Revision | |

TP.25

A