


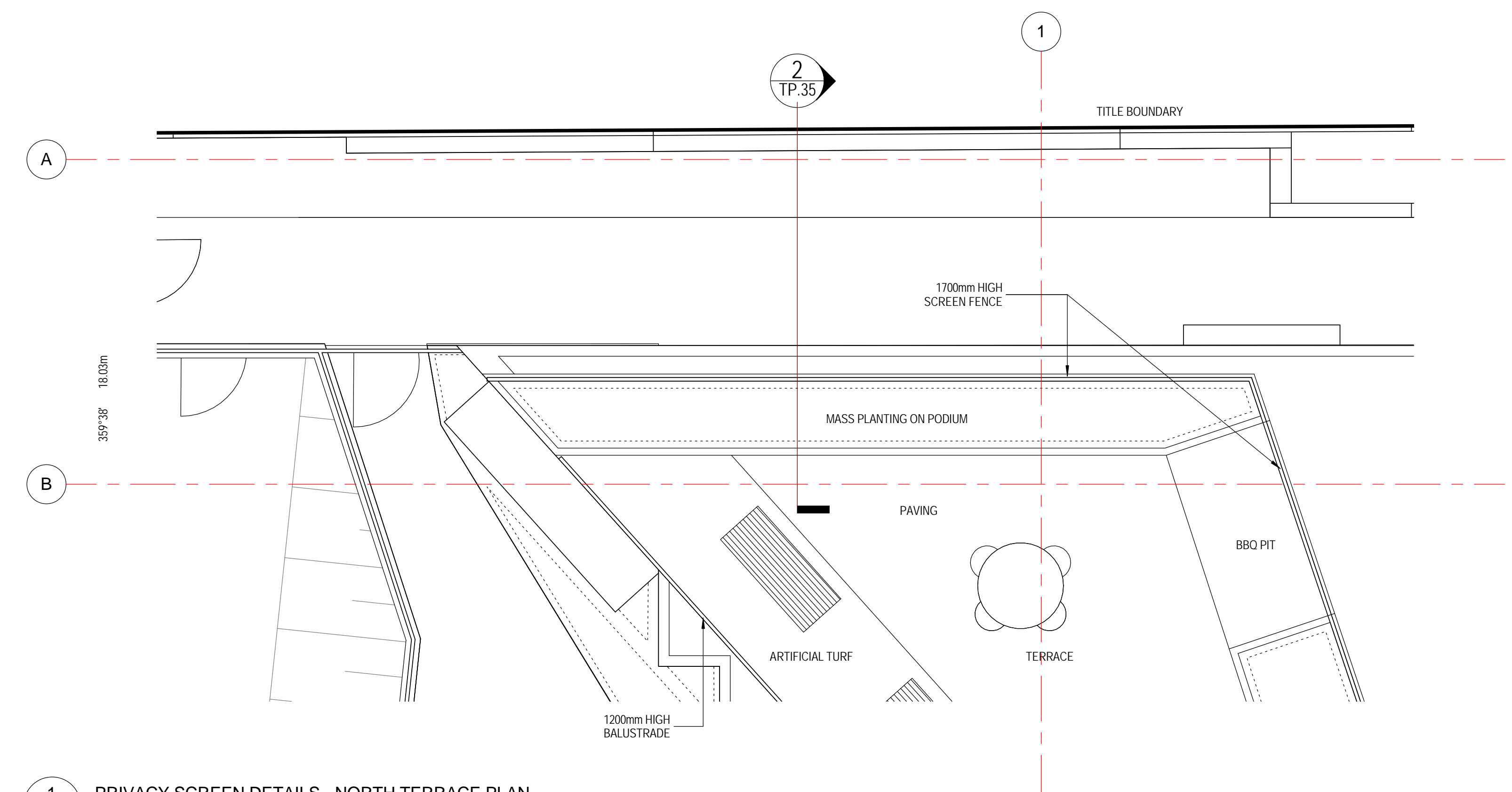
Disclaimer: This drawing and design is subject to copyright and may not be reproduced without prior written consent. Contractor to verify all dimensions on site before commencing work. Report all discrepancies to Spowers prior to construction. Do not scale critical dimensions. Check this drawing has been printed to scale by measuring on the ruler below before measuring scaled dimensions.



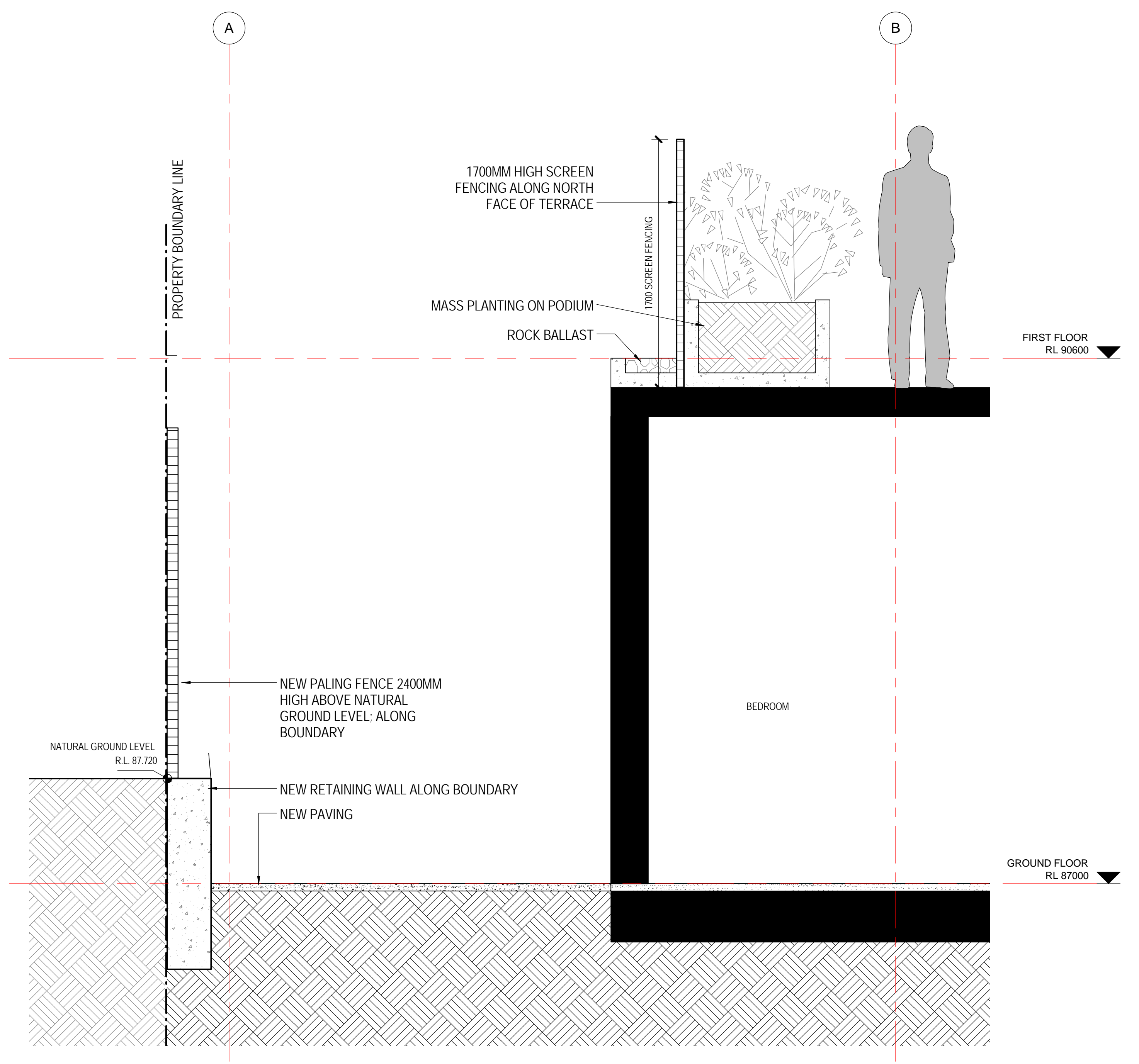
Drawing Status
TOWN PLANNING ISSUE

Revisions
A 14.10.2016 ISSUE FOR CLARIFICATION

Notes



1 PRIVACY SCREEN DETAILS - NORTH TERRACE PLAN
TP.05 1 : 50



2 PRIVACY SCREEN DETAILS - NORTH TERRACE SECTION
TP.35 1 : 20

Godfrey Spowers (Victoria) Pty Ltd
1/460 Collins Street Melbourne Victoria Australia 3000
T +61 3 9614 6144 F +61 3 9629 6791
info@spowers.com.au spowers.com.au



Client
JAPARA HEALTHCARE
JAPARA HEALTHCARE LIMITED
21 Building, Level 4, 1 Southbank Boulevard
Southbank, VIC 3006
T: +61 3 9649 2100 www.japarahhealthcare.com.au

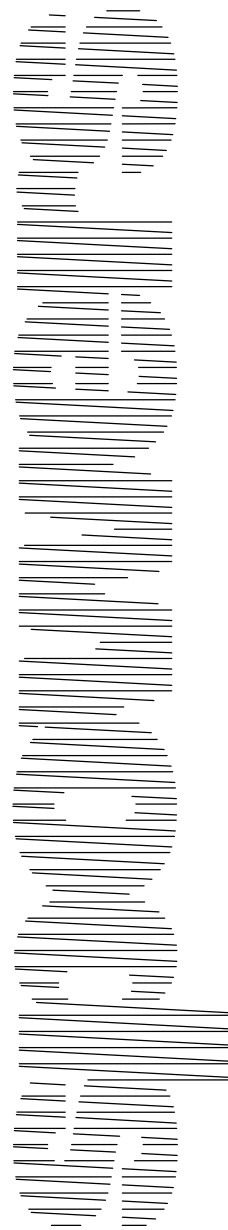
Project
**NEW AGED CARE ACCOMMODATION
35-39 REGENT STREET
MOUNT WAVERLEY VICTORIA 3149**

Drawing

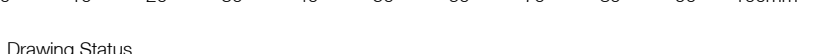
Author	Checker	Approver
2015017	15.08.2016	As indicated

Drawing Number: TP.35

TP.35 **A**



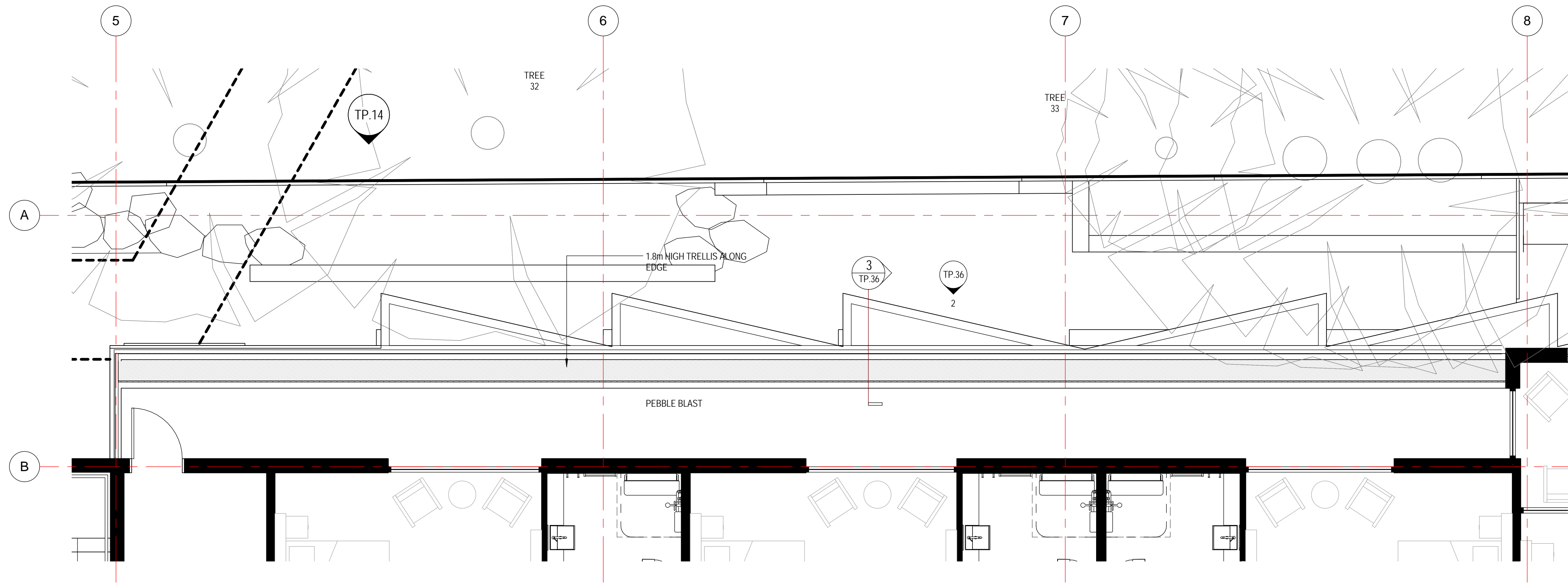
Disclaimer: This drawing and design is subject to copyright and may not be reproduced without prior written consent. Contractor to verify all dimensions on site before commencing work. Report all discrepancies to Spowers prior to construction. Do not scale critical dimensions. Check this drawing has been printed to scale by measuring on the ruler below before measuring scaled dimensions.



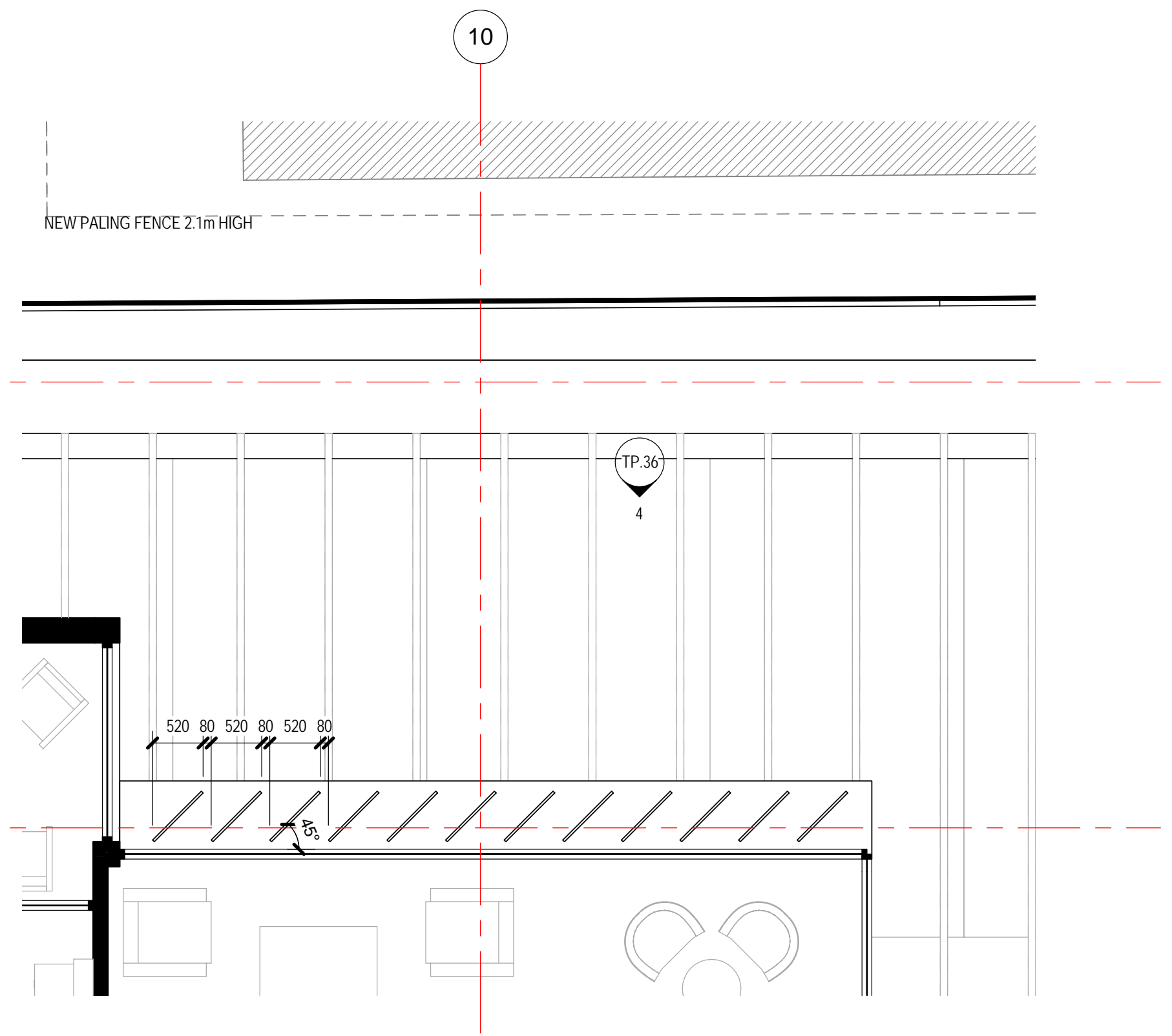
Drawing Status
TOWN PLANNING ISSUE

Revisions

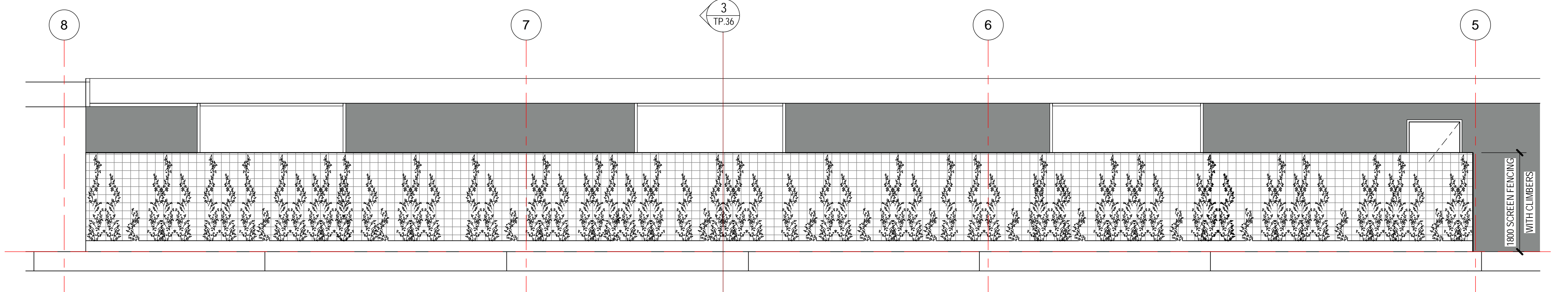
Notes



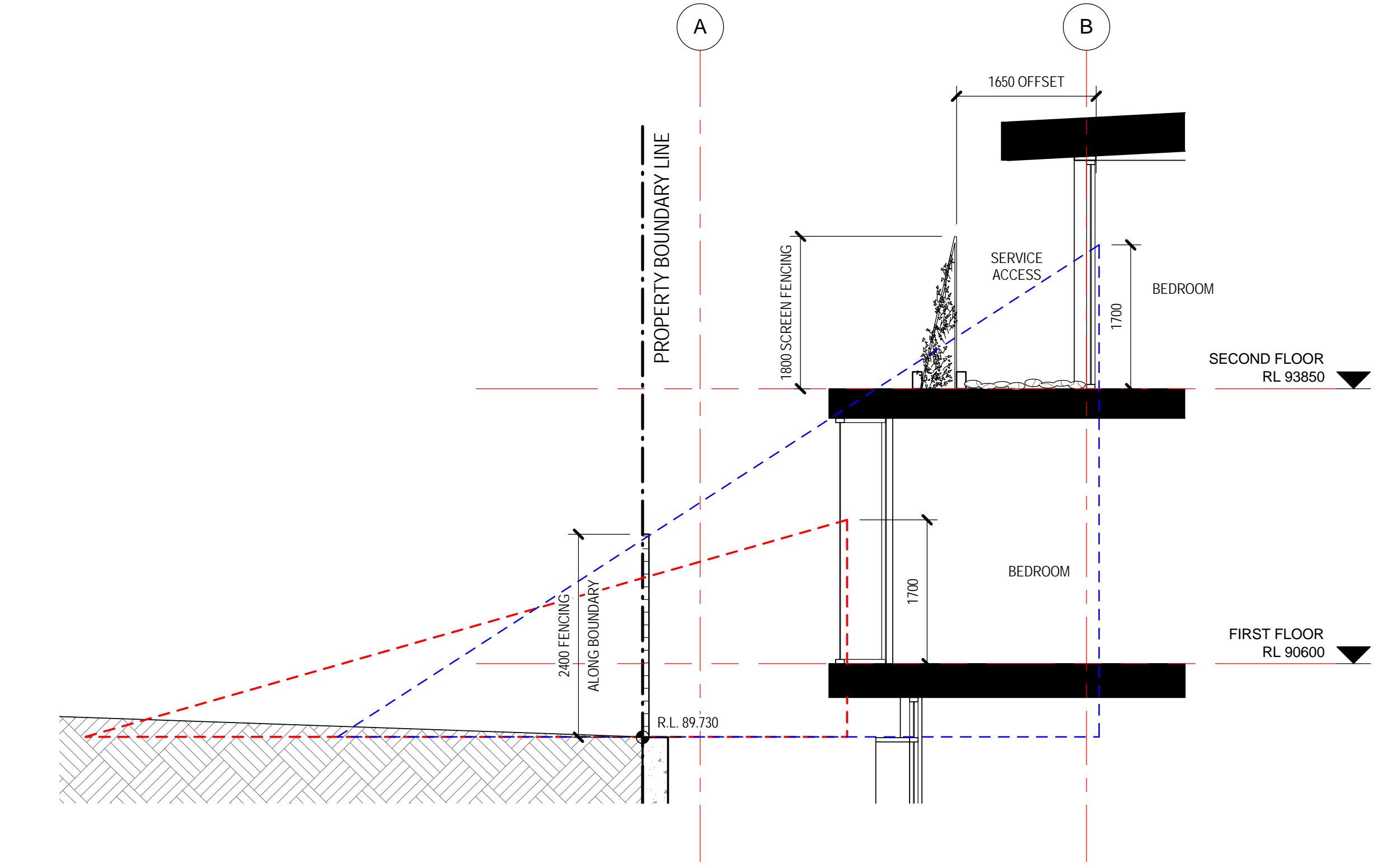
1 PRIVACY SCREEN DETAILS - NORTHERN BOUNDARY
TP.06 1 : 50



4 PRIVACY SCREEN DETAILS - NORTHERN BOUNDARY - ELEVATION 2
TP.36 1 : 50



2 PRIVACY SCREEN DETAILS - NORTHERN BOUNDARY - ELEVATION 1
TP.36 1 : 50



3 PRIVACY SCREEN DETAILS - NORTHERN BOUNDARY SECTION 1
TP.36 1 : 50



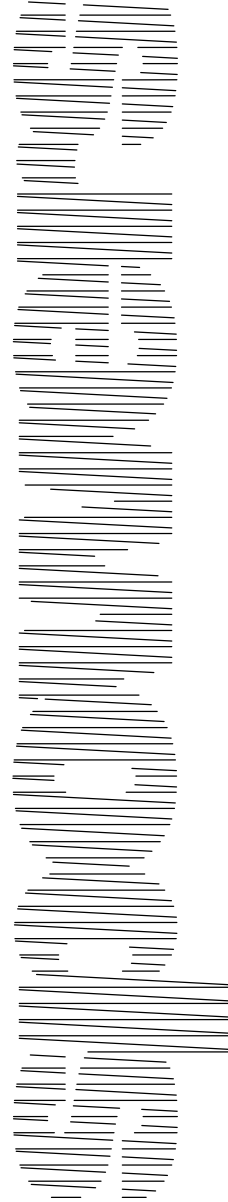
Client
JAPARA HEALTHCARE
JAPARA HEALTHCARE LIMITED
01 Building, Level 4, 1 Southbank Boulevard
Southbank, VIC 3006
T: +61 3 9649 2100 www.japarahhealthcare.com.au

Project
**NEW AGED CARE ACCOMMODATION
35-39 REGENT STREET
MOUNT WAVERLEY VICTORIA 3149**

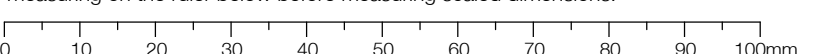
Author	Checked	Approver
2015017	15.08.2016	1 : 50
2015017	15.08.2016	1 : 50

TP.36

Godfrey Spowers (Victoria) Pty Ltd
1/460 Collins Street Melbourne Victoria Australia 3000
T: +61 3 9614 6144 F: +61 3 9829 6791
info@spowers.com.au spowers.com.au



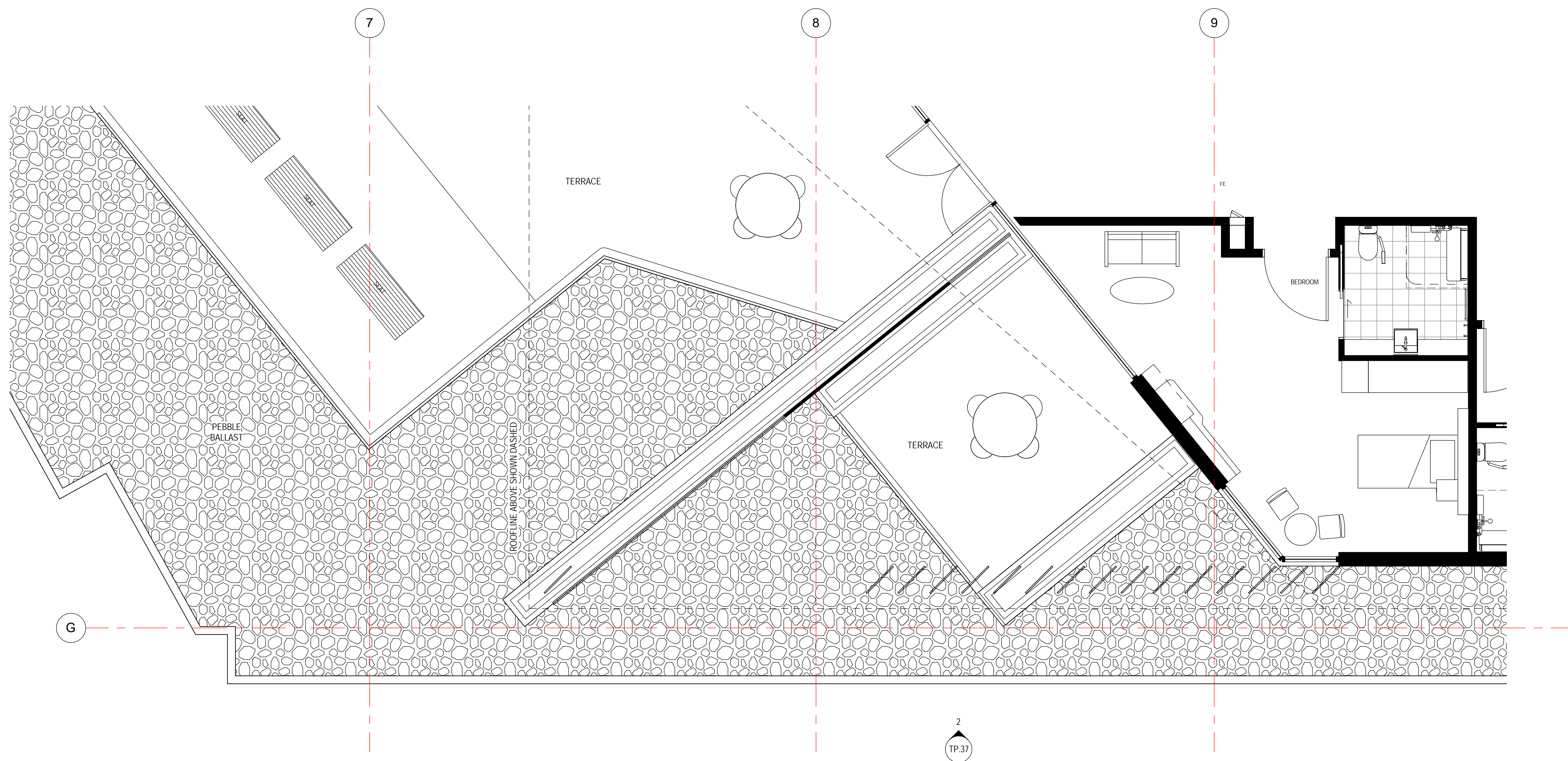
Disclaimer: This drawing and design is subject to copyright and may not be reproduced without prior written consent. Contractor to verify all dimensions on site before commencing work. Report all discrepancies to Spowers prior to construction. Do not scale critical dimensions. Check this drawing has been printed to scale by measuring on the ruler below before measuring scaled dimensions.



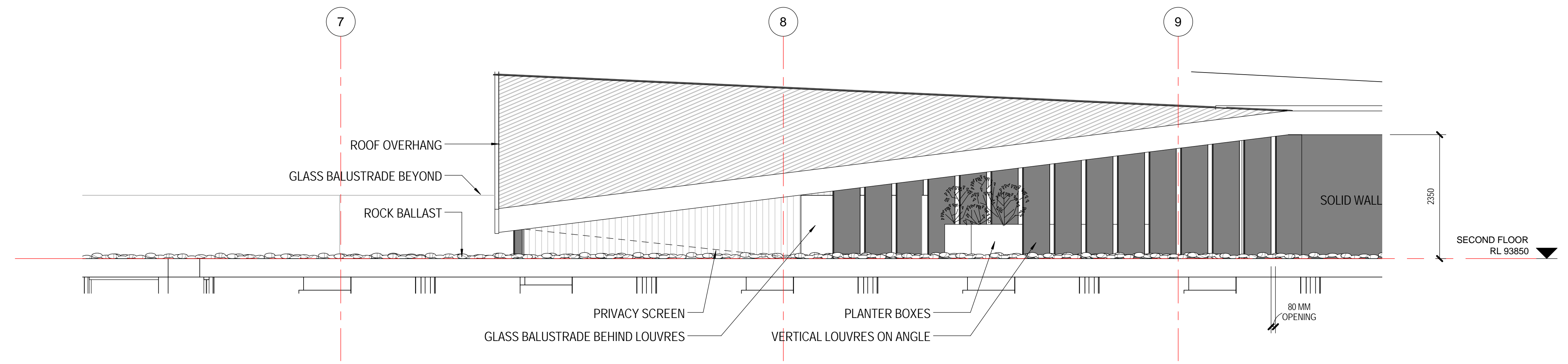
Drawing Status
TOWN PLANNING ISSUE

Revisions

Notes



1 PRIVACY SCREEN DETAILS - SOUTHERN BOUNDARY
TP.12 1 : 50



2 PRIVACY SCREEN DETAILS - SOUTHERN BOUNDARY
TP.37 1 : 50

Godfrey Spowers (Victoria) Pty Ltd
1/460 Collins Street Melbourne Victoria Australia 3000
T +61 3 9614 6144 F +61 3 9629 6791
info@spowers.com.au spowers.com.au



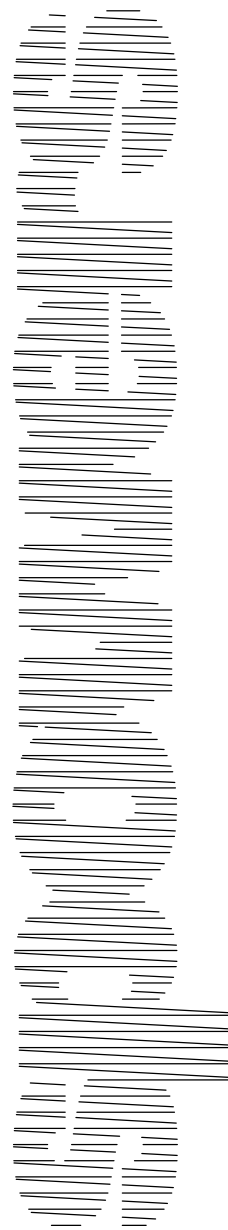
Client
JAPARA HEALTHCARE
JAPARA HEALTHCARE LIMITED
01 Building, Level 4, 1 Southbank Boulevard
Southbank, VIC 3006
T: +61 3 9649 2100 www.japarahhealthcare.com.au

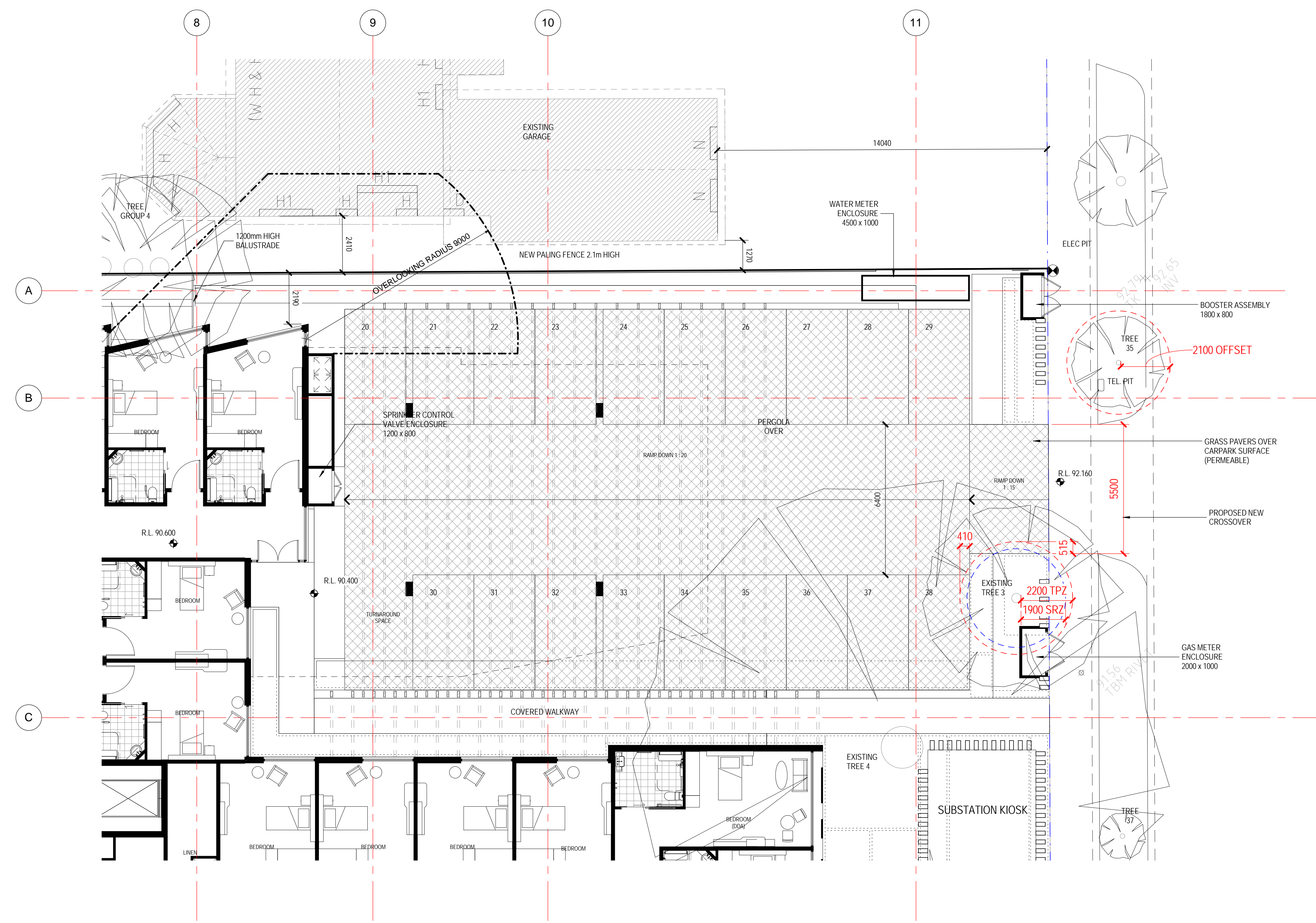
Project
**NEW AGED CARE ACCOMMODATION
35-39 REGENT STREET
MOUNT WAVERLEY VICTORIA 3149**

Drawing

Author	Checked	Approver
2015017	15.08.2016	1 : 50
Drawing Number	Date	Scale @ E1
		Revision

TP.37





Godfrey Spowers (Victoria) Pty Ltd
1/460 Collins Street Melbourne Victoria Australia 3000
T +61 3 9614 6144 F +61 3 9629 6791
info@spowers.com.au spowers.com.au



Client
JAPARA HEALTHCARE
JAPARA HEALTHCARE LIMITED
01 Building, Level 4, 1 Southbank Boulevard
Southbank, VIC 3006
T: +61 3 9649 2100 www.japarahealthcare.com.au

Project
**NEW AGED CARE ACCOMMODATION
35-39 REGENT STREET
MOUNT WAVERLEY VICTORIA 3149**

Drawing
ON GRADE CAR PARK DETAILS

Author	Checker	Approver
2015017	15.08.2016	1 : 100
Drawing Number	Date	Scale @ E1
		Revision

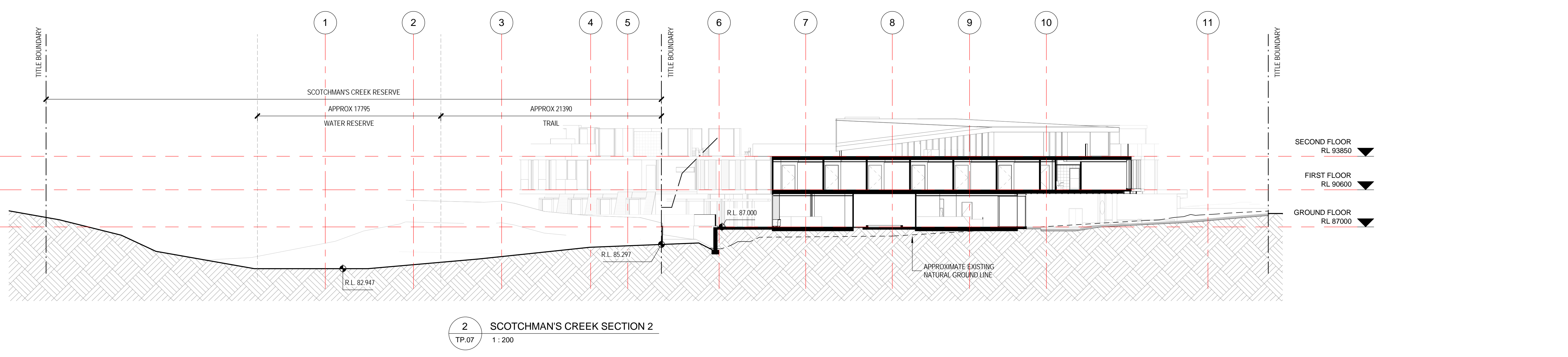
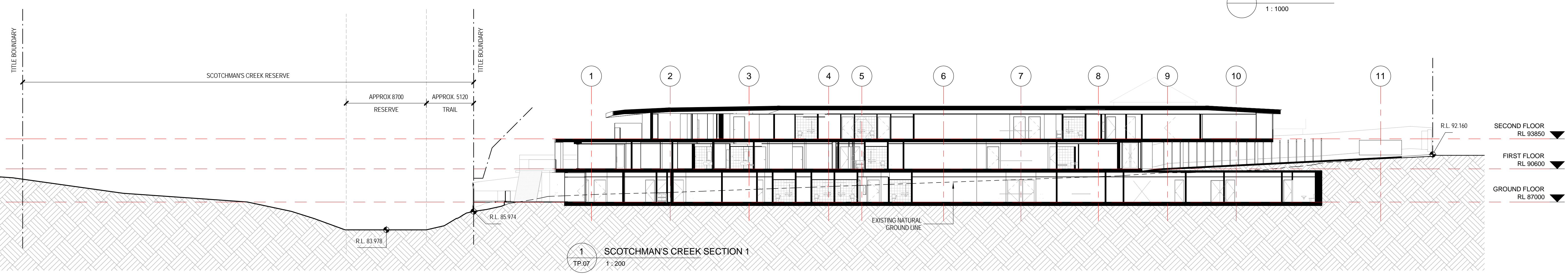
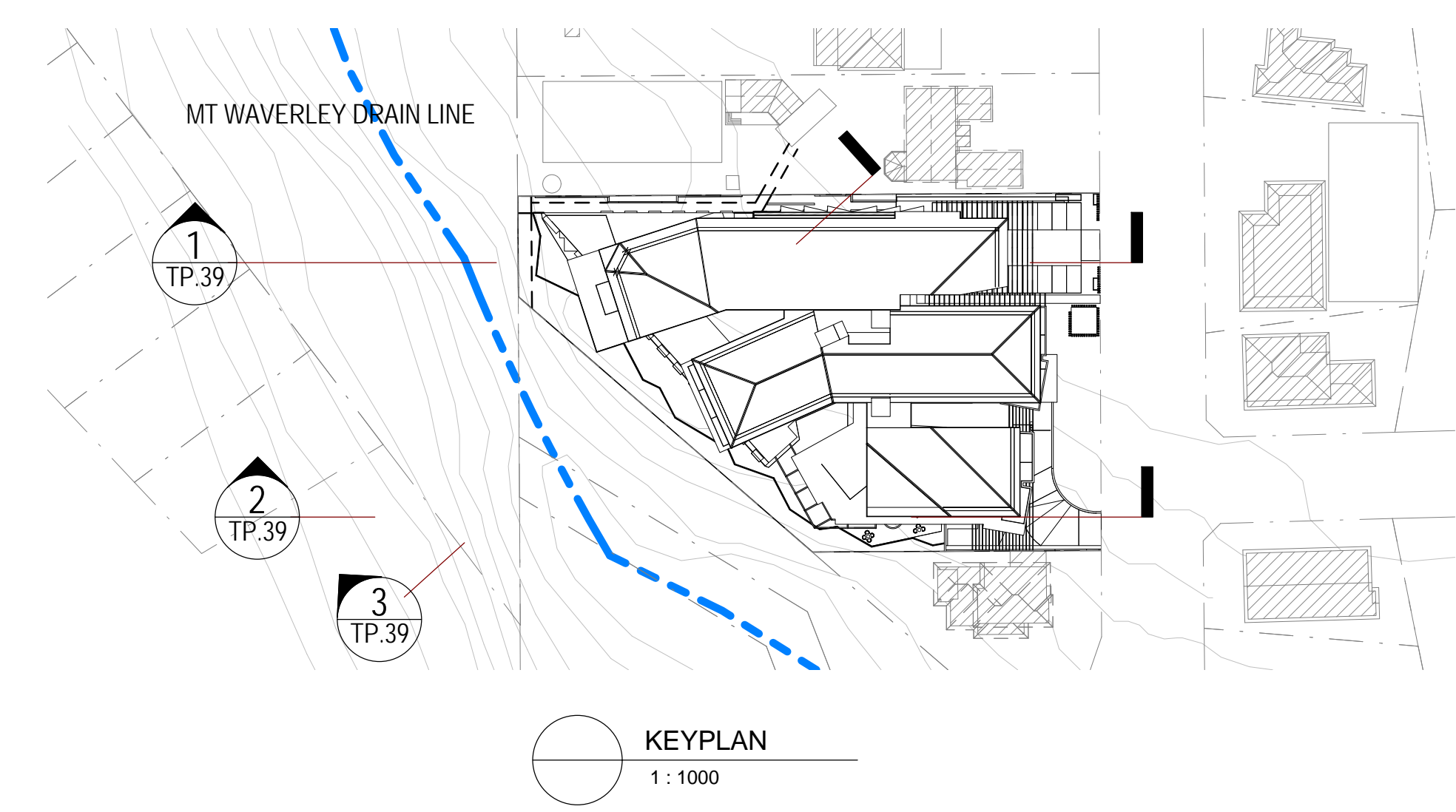
TP.38 **A**

Disclaimer: This drawing and design is subject to copyright and may not be reproduced without prior written consent. Contractor to verify all dimensions on site before commencing work. Report all discrepancies to Spowers prior to construction. Do not scale critical dimensions. Check this drawing has been printed to scale by measuring on the ruler below before measuring scaled dimensions.

Drawing Status
TOWN PLANNING ISSUE

Revisions
A 14.10.2016 ISSUE FOR CLARIFICATION

Notes



Godfrey Spowers (Victoria) Pty Ltd
1/460 Collins Street Melbourne Victoria Australia 3000
T +61 3 9614 6144 F +61 3 9629 6791
info@spowers.com.au spowers.com.au



Client
JAPARA HEALTHCARE
JAPARA HEALTHCARE LIMITED
01 Building, Level 4, 1 Southbank Boulevard
Southbank, VIC 3006
T: +61 3 9649 2100 www.japarahealthcare.com.au

Project
**NEW AGED CARE ACCOMMODATION
35-39 REGENT STREET
MOUNT WAVERLEY VICTORIA 3149**

Drawing
SCOTCHMAN'S CREEK SECTIONS

Drawn	Checked	Approved
JO	PS	RP
Job Number	Date	Scale @ E1
2015017	15.08.2016	As indicated
Drawing Number	Revision	

TP.39

A

7/10/2016 5:13:23 PM