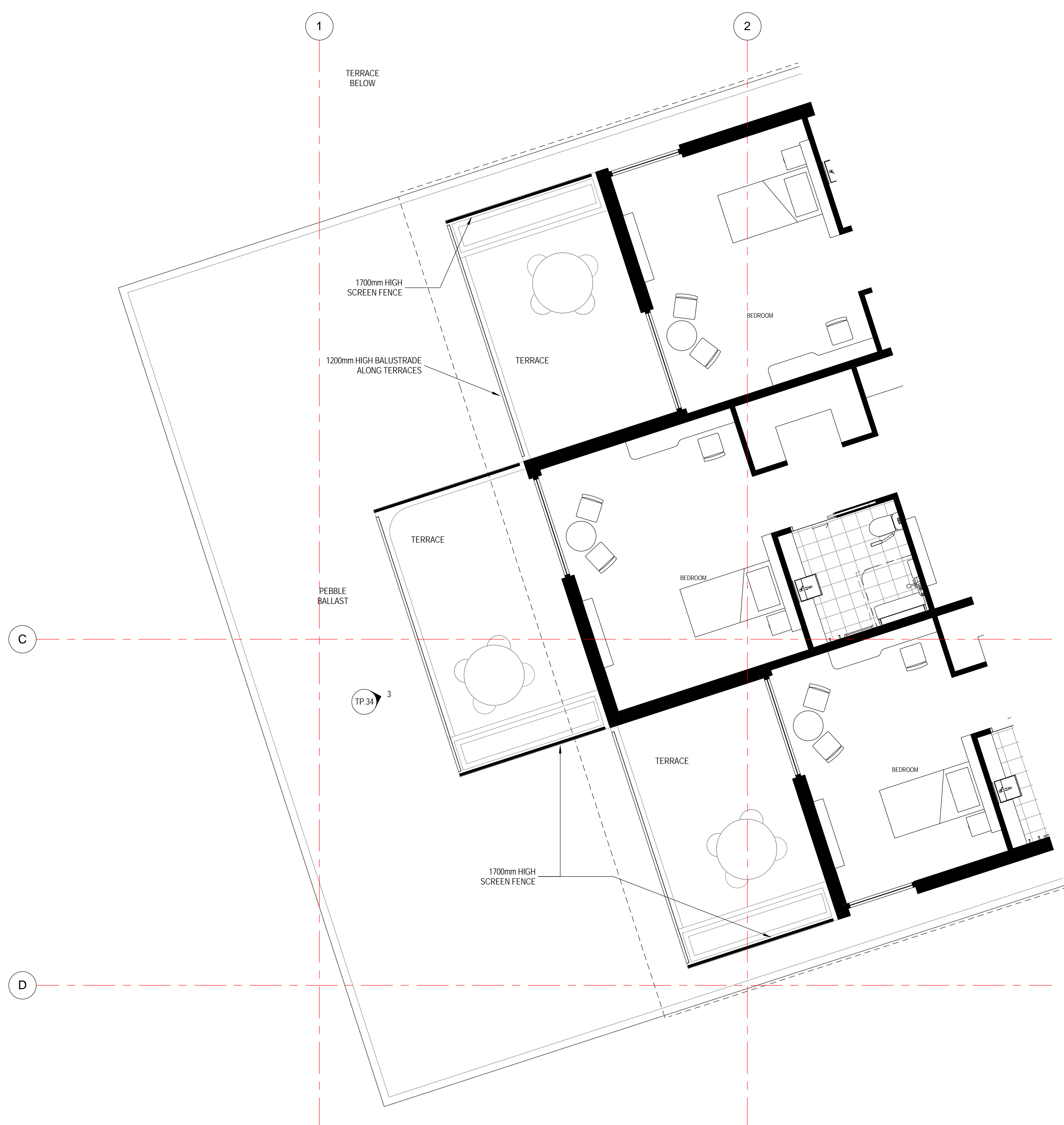


Disclaimer: This drawing and design is subject to copyright and may not be reproduced without prior written consent. Contractor to verify all dimensions on site before commencing work. Report all discrepancies to Spowers prior to construction. Do not scale critical dimensions. Check this drawing has been printed to scale by measuring on the ruler below before measuring scaled dimensions.

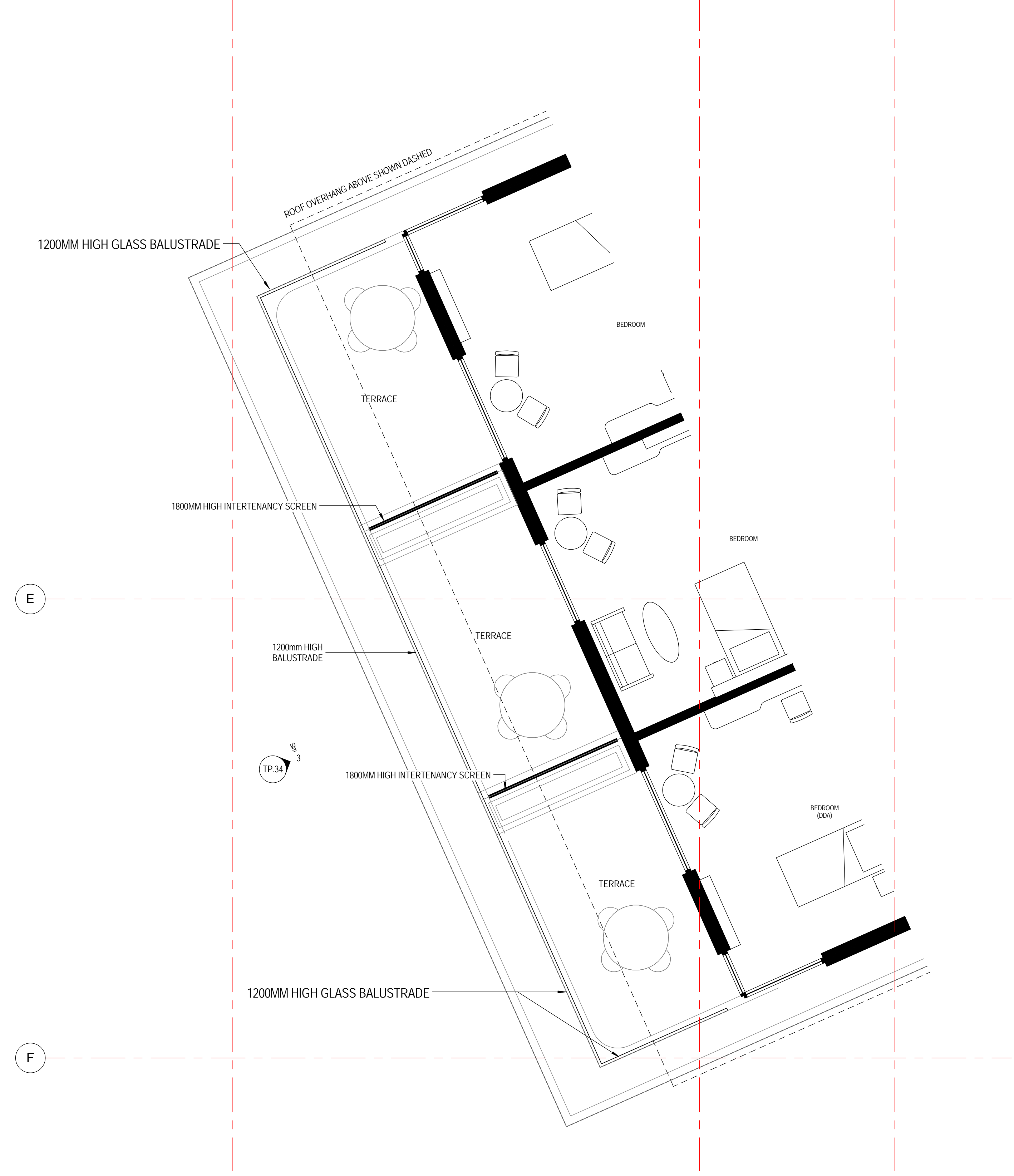
Drawing Status
TOWN PLANNING ISSUE

Revisions

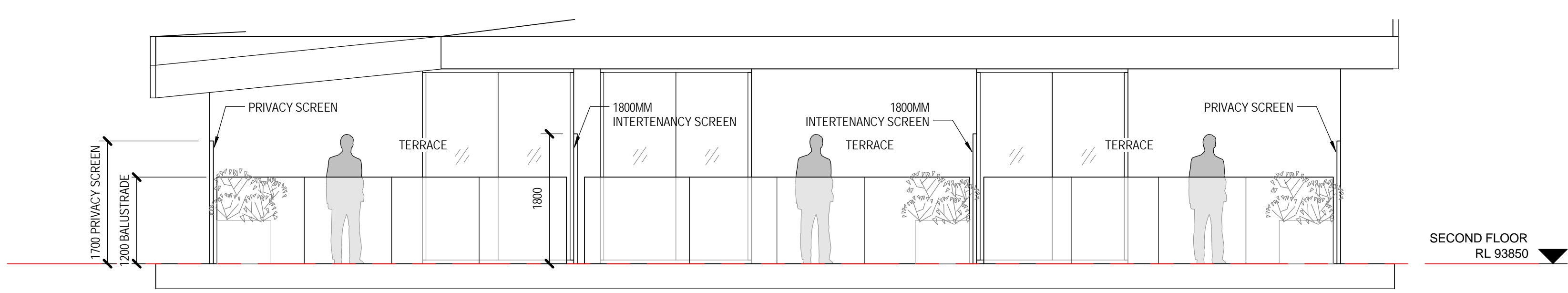
Notes



1 PRIVACY SCREEN DETAILS - ROOM SEPARATION 1
TP.06 1 : 50



2 PRIVACY SCREEN DETAILS - ROOM SEPARATION 2
TP.06 1 : 50



3 PRIVACY SCREEN DETAILS - TYP ROOM SEPARATION
TP.34 1 : 50

Godfrey Spowers (Victoria) Pty Ltd
1/480 Collins Street Melbourne Victoria Australia 3000
T: +61 3 9614 6144 F: +61 3 9629 6791
info@spowers.com.au spowers.com.au



Client
JAPARA HEALTHCARE
JAPARA HEALTHCARE LIMITED
21 Building, Level 4, 1 Southbank Boulevard
Southbank, VIC 3006
T: +61 3 9649 2100 www.japarahhealthcare.com.au

Project
**NEW AGED CARE ACCOMMODATION
35-39 REGENT STREET
MOUNT WAVERLEY VICTORIA 3149**

Drawing
PRIVACY SCREEN DETAILS - TYP ROOM PARTITION

Author	Checked	Approved
2015017	15.08.2016	1 : 50
Drawing Number	Revision	

TP.34