



SPECIFICATION NOTES

Soil Preparation
Crushed rock, concrete rubble and any other material reactive to plant growth (e.g. large rocks) shall be removed from the site at all planting beds and semi-advanced trees. All trees to be removed shall be stump ground and all rubbish/vegetative spoil is to be removed from site. Existing top soil in planting areas is to be preserved so that it does not receive additional compaction from site machinery and so that no rubble or building supplies are stored in these areas.

No imported top soil is to be used within the root zones of trees to be protected. Any preparation of existing soil for planting within these areas is to be done by D&C/D. Holes (e.g. as the result of plant removal) and uneven soil levels may be patched using topsoil as specified below.

Any imported topsoil is to be free of weeds, rubble and other materials damaging to plant growth and is to be of a medium texture (sandy loam) with a pH of 6.0-7.0. Top soil to be laid over a prepared sub-base which has had any materials damaging to plant growth (e.g. rubble and large rocks) removed, spread to the appropriate depth and cultivated into the existing sub-soil to a minimum depth of 100mm.

Imported top soil is to be lightly and uniformly compacted in 150mm layers to a minimum depth of 100mm on lawn areas and 300mm on excavated planting beds.

Weed Removal
All weeds shall be thoroughly removed. All vegetative material, including roots and micones of non-woody perennials and woody suckering weeds, is to be removed or appropriately contained within a barrier from the site. The storage of non-suckering woody perennials are to be stump ground. All vegetative material shall be appropriately disposed of off site in a manner which will not allow their re-establishment elsewhere. Any chemical controls are to be used in accordance with manufacturer's instructions and standard occupational health and safety procedures.

Care must be taken to ensure that all trees to be retained are not damaged during weed removal. This also implies that any herbicide used is suitable for use around the vegetation to be retained.

Planting
Planting shall be carried out using accepted horticultural practices with all plants conforming to the species, size and quantities indicated on the Landscape Plan and Plant Schedule. Plants shall be thoroughly soaked through immersion in water prior to planting and if the planting soil is very dry then the planting hole is also to be filled with water and allowed to drain completely.

All plants shall be appropriately hardened off in the nursery. Use plants with the following characteristics: Large healthy root systems with no evidence of root cut or pot bound condition or damage; Vigorous, well established, free from disease and pests and of good form, consistent with the species or variety.

Planting holes for shrubs and groundcovers are to be of minimum size 75mm larger than the planting pot in all directions. Semi-advanced tree planting holes are to be the same depth as the rootball and 2-3 times its diameter, with the top of the rootball below grade. A 75mm high berm is to be constructed at edge of rootball to hold water. All plants are to be thoroughly watered after planting and new release fertilizer added at the quantities specified by the manufacturer.

Mulch
Mulch is to be supplied to all garden beds and is to be an organic type laid to a minimum depth of 75mm, consisting of fine dark coloured chipped pine bark or hardwood with not more than 10% fines covered by volume (predominantly non-fines). The average size of the woodchip must be approximately 10mm x 20mm x 5mm and the maximum length is not to exceed 30mm. Mulch shall be free of garbage, weeds such as soil, weeds and sticks and is to be stockpiled and thoroughly weathered prior to delivery. Mulch is to be kept back 100mm from the stems of all plants to prevent collar rot.

Aggregate Gravel Surface
Aggregate gravel is to be installed where shown comprising of a 50mm layer of gravel (17.4mm granules screenings or similar, no fines) over a base course of 75mm deep granular compacted Fine Crushed Rock. The subgrade is to be appropriately compacted.

Timber Edges
Provide 75 x 25mm treated pine edges to all borders between gravel mulch paths and garden beds using 75x25x300mm long treated pine stakes at 1200mm maximum centres. An additional stake is to be provided at joints in the plants.

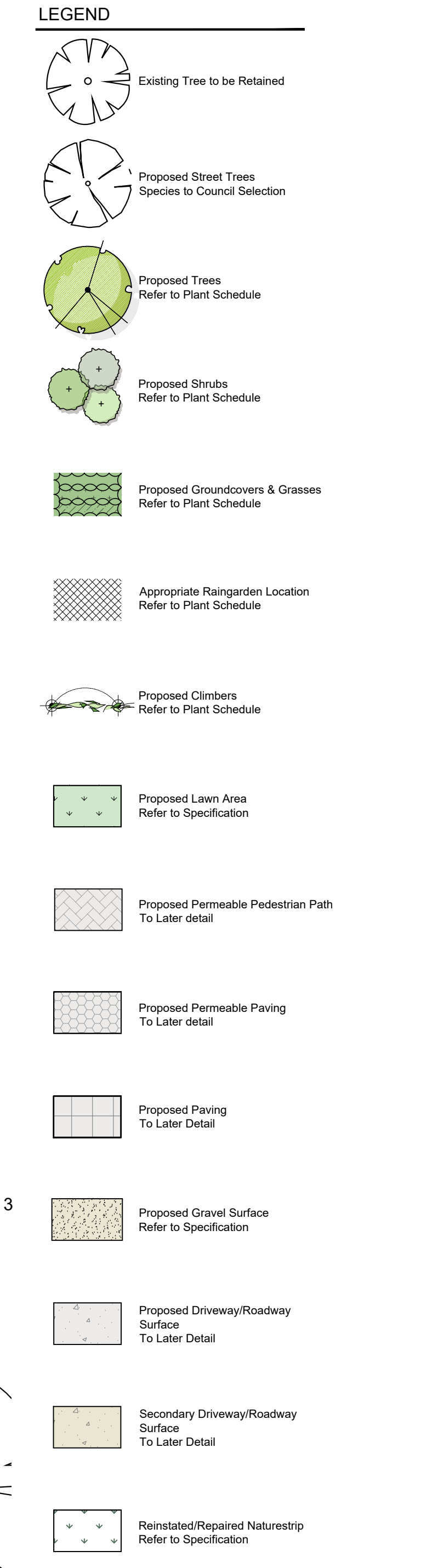
Irrigation
An approved drip irrigation system is to be supplied to all landscape areas. An approved pop-up spray system is to be supplied to all lawn areas. It is the responsibility of the contractor to ensure that all irrigation meets manufacturer's specifications. The system is to be connected to mains supply and include a rain-shut-off device. All drip-line is to be buried with approx. 50mm of topsoil cover and shall be anchored at regular intervals to ensure the tubing cannot be dislodged.

Lawn Turf
"Supreme" Soft Leaf Buffalo turf (or similar) is to be supplied to lawn areas as shown. Turf is to be supplied by a specialist grower and is not to be allowed to dry out between cutting and laying. Turf shall be laid in a staggered pattern so that joints are staggered and is to be lightly tamped following laying. All lawn areas are to be thoroughly watered following planting and fertilized with an appropriate lawn starter at the quantities recommended by the manufacturer.

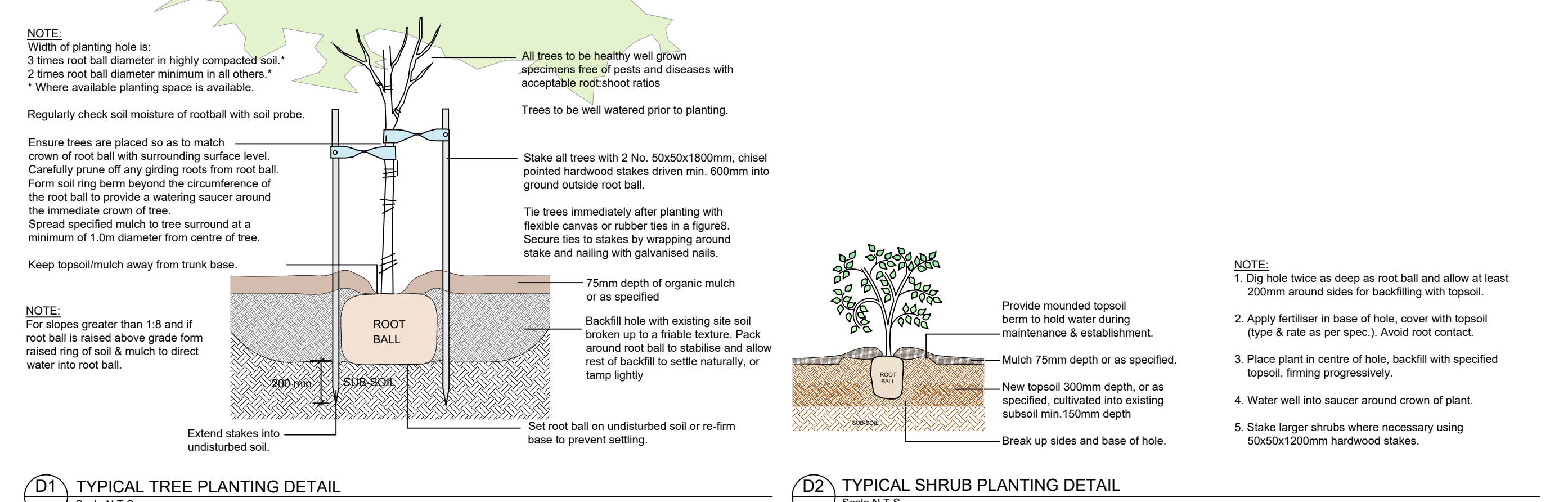
Repair/Restoration of damaged Nature-strips
Nature strips are to be restored to current grades with any depressions filled with topsoil and fertilized with an appropriate fertilizer at the quantities recommended by the manufacturer. Areas are then to be re-seeded using an appropriate and matching turf type and the area fenced off to allow the re-establishment of lawn. Re-seeded areas are to be well irrigated and the area supplied with a slow release fertilizer at the quantities recommended by the manufacturer.

Any areas of lawn which have failed to germinate (achieve an evenly green 95% covering of a consistent height) are to be re-seeded within one month of original sowing date.

Plant Establishment Period
There shall be a 13 month Plant Establishment Period following the approval of Practical Completion by the responsible authority. During this period the landscape contractor shall make good all defects in the scope of work. Maintenance and Establishment means the care and maintenance of the contact area by accepted horticultural practices, as well as rectifying any defects that become apparent in the work under normal use. This shall include, but shall not be limited to watering, fertilizing, weeding, pruning, pest and disease control, cultivation, re-planting and replacement of any plants that fail with plants of the same species and size.



TYPICAL PLANTING DETAILS



PLANTING SCHEDULE

SYM	BOTANICAL NAME	COMMON NAME	DE NEW	HEIGHT X WIDTH AT MATURITY	MIN SUPPLY SIZE	QTY	TO LATER DETAIL
TREES							
AOOG	<i>Acer rubrum</i> 'October Glory'	Red Maple 'October Glory'	DEX	12 x 9m	50cm x 200H	6	
CeN	<i>Corymbia alaxina</i> 'Nana'	Bloodie cood	EN	10 x 6m	50cm x 200H	23	
Os	<i>Callistemon salignus</i>	Yellow Bottlebrush	EN	7 x 4m	30cm x 120H	7	
Ei	<i>Eucalyptus maculata</i>	Yellow Gum	EN	20 x 15m	30cm x 80H	19	
Es	<i>Eucalyptus scoparia</i>	Walgargua White Gum	EN	10 x 6m	50cm x 200H	19	
Hb	<i>Hakea succulenta</i> 'Red Pipers'	Red Pipers Hakea	EN	4 x 3m	50cm x 200H	27	
LxB	<i>Lagerströmia indica</i> s.l. 'Royal' 'Blue'	Blow Orange Myrtle	DEX	7 x 5m	50cm x 200H	21	
SIS	<i>Syzygium forsterianum</i> 'Sw seaper'	Sw seaper Weeping Lilly-pilly	EN	10 x 5-8m	50cm x 200H	3	
Ti	<i>Tritanopsis laurina</i> 'Luscious'	Luscious Kanooka/Water Gu	EN	8 x 5m	30cm x 150H	10	
						TOTAL	145
SHRUBS							
Cr	<i>Correa reflexa</i>	Common Correa	EN	1 x 1m	140mm pot		
Dv	<i>Dodonaea viscosa</i>	Slicky Hop-bush	EN	1.5-4 x 1-3m	140mm pot		
Gm	<i>Guchardtia macrocarpa</i>	Large-flow eucalypt	EN	1 x 1m	140mm pot		
Mp	<i>Muraya paniculata</i>	Orange Jessamine	DEX	2 x 1m (clipped)	200mm pot		
Pn	<i>Philotheca myoporoides</i>	Wax Flower er	EN	1.5 x 1.5m	140mm pot		
Rc	<i>Ribes cereum</i>	Sleazeberry	EN	2 x 1-1.5m	140mm pot		
Ssbc	<i>Syzygium australe</i> 'Bush Christmas'	Bush Christmas Lilly-pilly	EN	2-3 x 1-3m	200mm pot		
						TOTAL	140

SYM	BOTANICAL NAME	COMMON NAME	DE NEW	HEIGHT X WIDTH AT MATURITY	MIN SUPPLY SIZE	QTY	TO LATER DETAIL
GROUNDCOVERS							
Bb	<i>Buthine bulbosa</i>	Buthine Lily	EN	0.2-0.5 x 0.3m	140mm pot		
BBD	<i>Brachycome multifida</i> 'Break O Day'	'Break O Day' Cut-leaf Daisy	EN	0.3 x 0.4m	140mm pot		
Ca	<i>Chrysanthemum apiculatum</i>	Common Everlasting	EN	0.5 x 0.8m	140mm pot		
Da	<i>Dianella admetta</i>	Black Anther Flax Lily	EN	0.5 x 0.5m	140mm pot		
DcCb	<i>Dianella caerulea</i> 'Cassa Blue'	Cassa Blue Flax Lily	EN	0.5 x 0.4m	140mm pot		
Di	<i>Dianella laevis</i>	Pale Flax Lily	EN	1 x 1-1.5m	140mm pot		
Fi	<i>Ficinia nodosa</i>	Knobby Club-rush	EN	0.5-1.5 x 0.5-1m	140mm pot		
Kp	<i>Kennedia prostrata</i>	Running Postman	EN	0.1 x 2m	140mm pot		
Li	<i>Lomandra longifolia</i>	Spray-headed Mill-rush	EN	1 x 1-1.5m	140mm pot		
Lm	<i>Lomandra longifolia</i> 'Tallies'	Nyella Mill-rush	EN	0.8-0.9 x 0.8-0.9m	140mm pot		
Mp	<i>Mycoporum paniculatum</i>	Creeping Bobtail	EN	0.2 x 1-3m	140mm pot		
Ri	<i>Poa labillardieri</i>	Tussock Grass	EN	0.8 x 0.8m	140mm pot		
Sv	<i>Scariosa 'Meuse Clusters'</i>	Meuse Clusters Flax Flower	EN	0.3 x 0.8m	140mm pot		
Vh	<i>Viola hedraea</i>	Native Violet	EN	0.15 x Spreading	140mm pot		
Wb	<i>Waltheria stricta</i>	Tall Bluebell	EN	0.4-0.9 x 0.3-0.4m	140mm pot		
						TOTAL	140
CLIMBERS							
Aj	<i>Aphanopetalum resinosum</i>	Gum Vine	EN	Climber	140mm pot		
Hv	<i>Hardenbergia violacea</i>	False Saraparilla/Purple Cor	EN	Climber/Screamer	140mm pot		
Pp	<i>Pandorea pandorana</i>	Wonga Wonga Vine	EN	Twinning Climber	140mm pot		
Rt	<i>Parthenocissus tricuspidata</i>	Boston Ivy	DEX	Self-clinging Climber	140mm pot		
						TOTAL	140