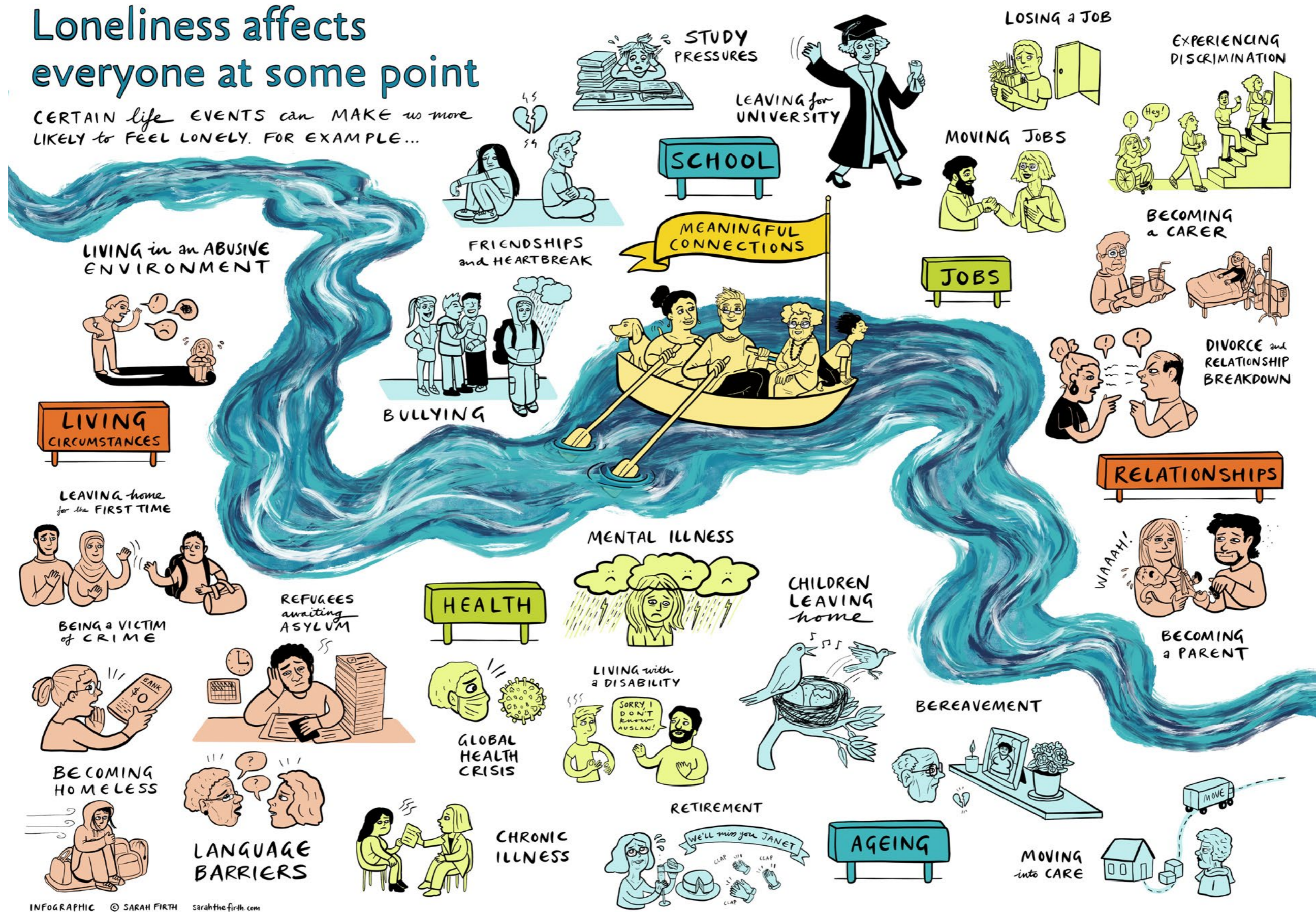


Loneliness affects everyone at some point

CERTAIN life EVENTS can MAKE us more LIKELY to FEEL LONELY. FOR EXAMPLE...



INFOGRAPHIC © SARAH FIRTH sarahthefirth.com

Title: Loneliness Infographic

Headline: Loneliness affects everyone at some point. Certain Life Events can make us more likely to feel lonely.

The infographic shows many cartoon illustrations representing different life experiences and events, positioned along a river which represents the journey of a person's life. The infographic summarises the most common reasons for loneliness, as described in more detail in the Monash Loneliness Framework 2020- 2025.



CITY OF
MONASH