

## Street Tree Renewal Information – Viggers Parade, Glen Waverley

The table below lists the details of the trees to be removed at each location. For replacement details, please refer to the map below.

No	Location	Species	Condition Assessment
1.	29 Viggers Parade	<i>Melaleuca armillaris</i>	40% canopy dieback, unlikely to recover, < 2 Years ULE.
2.	10 Viggers Parade	<i>Syzygium smithii</i>	Stunted growth. <80% vigour, < 2 Years ULE.
3.	2 Viggers Parade	<i>Callistemon salignus</i>	Reduced vigour. Tree is dying, < 2 Years ULE.

\*< 2 Years ULE - with a useful life expectancy of less than two years

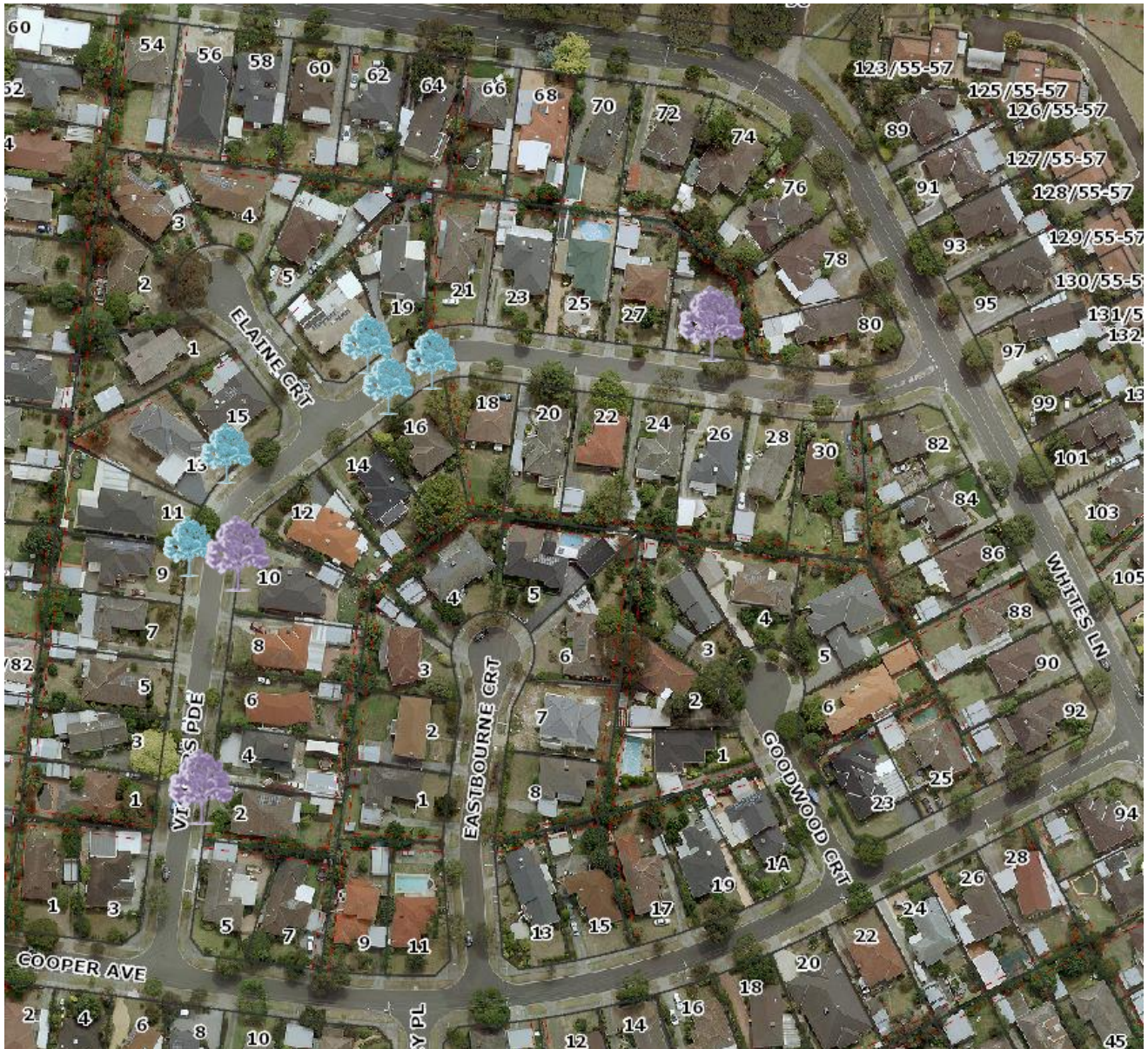
The table below lists the details of the locations and tree species to be planted in vacant sites along Viggers Parade, Glen Waverley




No.	Street Location
1.	9 Viggers Parade
2.	13 Viggers Parade
3.	6 Elaine Court in Viggers Parade
4.	16 Viggers Parade
5.	16 Viggers Parade

# Street Tree Renewal Information – Viggers Parade, Glen Waverley

## MAP - Removals, Replacements & Infill Planting

The map below details the removals, replacements and infill plantings. All other trees have been assessed as having more than 2 years useful life and will be retained.



Legend	
	New Tree To be planted
	Tree to be removed and replaced
	Tree to be removed but not replaced



## Street Tree Renewal Information – Viggers Parade, Glen Waverley

### Proposed Species Options

#### Option 1 – Single Species (both sides of the road)

<i>Myrsine howittiana</i> (MuttonWood)	
<p>Power line side and Non-Power line side</p>  	<p>The Ripple-leaf Mutton wood is a small evergreen native tree or large shrub. The bark is grey to greyish-brown, smooth.</p> <p>The leaves are elliptic in shape with edges that are entire and usually strongly undulating in the adult leaves (hence ripple leaf).</p> <p><b>Mature Size (h x w):</b> 3-15 x 2-6m</p> <p><b>Form:</b> Round</p>

#### Option 2 – Combination of Species

<i>Malus tschonoskii</i> (Pillar Crabapple)	
<p>Power line side</p>  	<p>This tree is one of the most hardy and easily grown trees available. They are a source of bright spring blossom, and feature wonderful autumn tones and highly-colored ornamental fruits. An easy-to-grow, small trees that tolerate a wide variety of growing conditions.</p> <p><b>Mature Size (h x w):</b> 7 x 4m</p> <p><b>Form:</b> Oval – Pyramidal</p>
<i>Nyssa sylvatica</i> (Black Tupelo)	
<p>Non-Power line side</p>  	<p>This tree has dark green, glossy leaves which turn yellowish-apricot to bright scarlet in autumn, creating a spectacular autumn display. This tree has good form and is rarely attacked by pests, is very drought tolerant but does benefit from irrigation during dry spells, particularly during establishment.</p> <p><b>Mature Size (h x w):</b> 8 -12 x 6 -10m</p> <p><b>Form:</b> Conical – Round</p>

## Street Tree Renewal Information – Viggers Parade, Glen Waverley

### Option 3 - Combination of Species

<b>Lagerstroemia indica x L. fauriei 'Sioux' (Sioux Upright Crepe Myrtle)</b>	
<p>Power line side</p> 	<p>Creating quite the visual impact over a lengthy period, this variety offers masses of intense, pink flowers over summer, followed by stunning, rich foliage colour in tones of yellow, red and orange through autumn, before shedding its leaves. When mature, the bark of this variety will peel, creating a mottled effect to reveal the beautiful caramel-pink colour of its under bark.</p> <p><b>Mature Size (h x w):</b> 5 x 4m <b>Form:</b> Round</p>
<b>Fraxinus pennsylvanica 'Urbanite' (Urbanite Green Ash)</b>	
<p>Power line side</p> 	<p>This is fast growing tree with outstanding lustrous green foliage that maintains a healthy appearance in summer, which turns a beautiful bronze colour before falling. It adapts well to most soils and conditions.</p> <p><b>Mature Size (h x w):</b> 11 x 8m <b>Form:</b> Round</p>