

## Street Tree Renewal Information – Risdon Drive, Notting Hill

The table below lists the details of the trees to be removed at each location. For replacement details please refer to map below.

No	Location	Species	Condition Assessment
1.	15 Risdon Drive	<i>Prunus sp.</i>	Sucker growth from stump, < 2 Years ULE.

\*< 2 Years ULE - with a useful life expectancy of less than two years

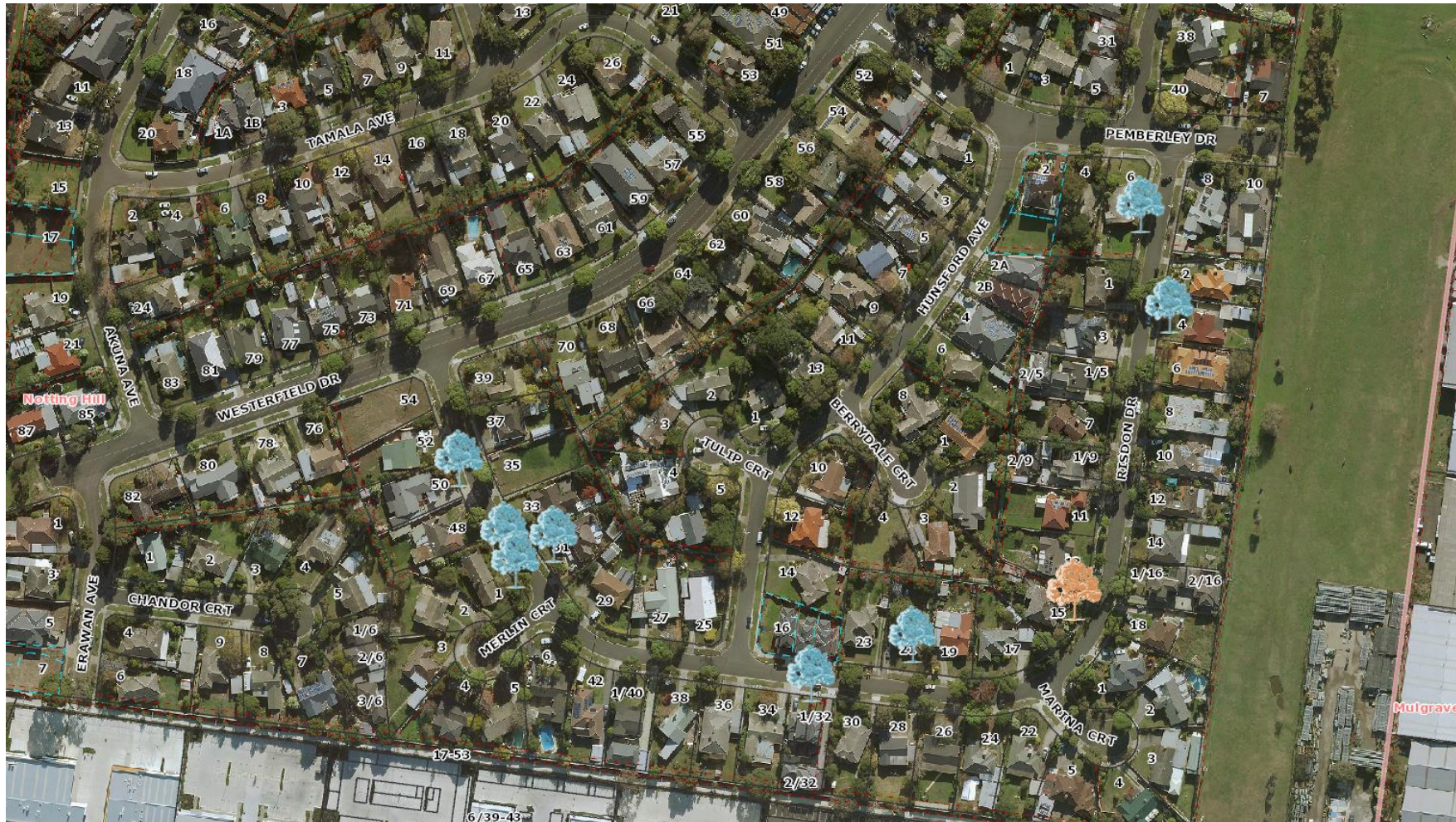
The table below lists the details of the locations and tree species to be planted in vacant sites along Risdon Drive, Notting Hill.

No.	Street Location
1.	50 Risdon Drive
2.	1 Merlin Court in Risdon Drive
3.	1 Merlin Court in Risdon Drive
4.	32 Risdon Drive
5.	4 Risdon Drive
6.	6 Pemberley Drive in Risdon Drive
7.	21 Risdon Drive
8.	31 Risdon Drive

# Street Tree Renewal Information – Risdon Drive, Notting Hill

## MAP - Removals, Replacements & Infill Planting



The map below details the removals, replacements and infill plantings.



# Street Tree Renewal Information – Risdon Drive, Notting Hill



## Proposed Species Options

### Option 1 – Combination of Species


<i>Acer campestre</i> 'Elsrijk' (Elsrijk Maple)	
<p>Power line side</p> 	<p>Compact, slow growing small tree with a dense round canopy, and a somewhat corky bark. Small leaves with rounded lobes, dark green in summer, which turn a beautiful clear yellow in the autumn. Green inconspicuous flowers from September to October.</p> <p><b>Mature Size (h x w):</b> 8-10 x 7m <b>Form:</b> Round</p>
<i>Fraxinus pennsylvanica</i> 'Urbanite' (Urbanite Green Ash)	
<p>Non-Power line side</p> 	<p>This is fast growing tree with outstanding lustrous green foliage that maintains a healthy appearance in summer, which turns a beautiful bronze colour before falling. It adapts well to most soils and conditions.</p> <p><b>Mature Size (h x w):</b> 11 x 8m <b>Form:</b> Round</p>

## Street Tree Renewal Information – Risdon Drive, Notting Hill

### Option 2 – Combination of Species

<i>Tristaniopsis laurina</i> 'Luscious' (Luscious Kanooka)	
Power line side 	This native tree has a dense foliage canopy with glossy green leaves that are oblong shaped. Yellow flowers are borne in Summer and are abundant with nectar, attracting birds. Smooth creamy trunk streaked with grey. <b>Mature Size (h x w):</b> 8 x 4m <b>Form:</b> Oval
<i>Lophostemon confertus</i> (Queensland Brush Box)	
Non- Power line side 	This dome headed tree has a dense, glossy green canopy, great salmon coloured bark that peels in summer. It flowers in Summer forming small white clusters. <b>Mature Size (h x w):</b> 10 x 15m <b>Form:</b> Oval

### Option 3 – Single Species (both sides of the road)

<i>Cercis canadensis</i> 'Forest Pansey'	
Power line side and Non-Power line side 	This small, attractive tree has spectacular heart shaped, burgundy coloured leaves that continually change colour throughout the year. A rich purple in spring, the foliage transforms to green over summer, followed by a multi-coloured autumn display in tones of red, apricot and gold. The branches have a distinctive, smooth, dark brown wood. <b>Mature Size (h x w):</b> 5-7 x 5-7m <b>Form:</b> V-Shaped

## Street Tree Renewal Information – Risdon Drive, Notting Hill