






Tree Removals

The table below lists the details of the trees to be removed, including tree location, tree species and condition assessment. For further location details, please refer to the street map outlining all removals, replacements and infill planting. Alternatively each tree has had a reference tag attached and these tags will correspond to the reference number below for on-site identification.

Ref No.	Street Address	Assessment Outcome	Follow Up Action	Current Tree Species	Tree Condition Assessment (*ULE <2 Years)	Tree Image
47	19 Sandgate Avenue	Tree to be removed	No replacement tree to be planted	<i>Ulmus glabra Lutescens</i>	Vigour (health) in canopy 85%. But dieback through crown. Trunk defect observed. Possible bacterial infection	
48	43 Sandgate Avenue	Tree to be removed	Replacement tree to be planted	<i>Callistemon citrinus</i>	Major decay through most of main stem	
49	51 Sandgate Avenue	Tree to be removed	Replacement tree to be planted	<i>Callistemon linearis</i>	ULE <2 Years	

Ref No.	Street Address	Assessment Outcome	Follow Up Action	Current Tree Species	Tree Condition Assessment (*ULE <2 Years)	Tree Image
50	53 Sandgate Avenue	Tree to be removed	Replacement tree to be planted	<i>Callistemon salignus</i>	Tree displays decay and poor structure	
51	32 Sandgate Avenue	Tree to be removed	Replacement tree to be planted	<i>Callistemon salignus</i>	One leader, roadside, has significant (old) split	
52	24 Sandgate Avenue	Tree to be removed	Replacement tree to be planted	<i>Callistemon salignus</i>	Poor vigour (health) in mostly in upper crown	
53	35 Sandgate Avenue	Tree to be removed	Replacement tree to be planted	<i>Callistemon salignus</i>	Decay and defects in lower trunk	

Ref No.	Street Address	Assessment Outcome	Follow Up Action	Current Tree Species	Tree Condition Assessment (*ULE <2 Years)	Tree Image
54	20 Sandgate Avenue	Tree to be removed	Replacement tree to be planted	<i>Callistemon salignus</i>	Vigour (health) overall generally good but has significant decay at and below crown union	
55	15 Sandgate Avenue	Tree to be removed	Replacement tree to be planted	<i>Callistemon salignus</i>	Vigour <75% (health). Tree in senescence (deterioration)	
56	11 Sandgate Avenue	Tree to be removed	Replacement tree to be planted	<i>Melaleuca linariifolia</i>	Dying	
57	6 Bristol Court	Tree to be removed	Replacement tree to be planted	<i>Melaleuca linariifolia</i>	Dying	

Ref No.	Street Address	Assessment Outcome	Follow Up Action	Current Tree Species	Tree Condition Assessment (*ULE <2 Years)	Tree Image
58	6 Bristol Court	Tree to be removed	Replacement tree to be planted	<i>Buckinghamia celsissima</i>	Dying	
59	2 Sandgate Avenue	Tree to be removed	Replacement tree to be planted	<i>Ficus sp.</i>	Declining vigour. This species has higher potential to contribute to surrounding infrastructure damage	

Infill Planting Location




The table below lists the details of the locations where trees will be planted in currently vacant sites along Sandgate Avenue, Glen Waverley. For further location details, please refer to the street map outlining all removals, replacements and infill planting.

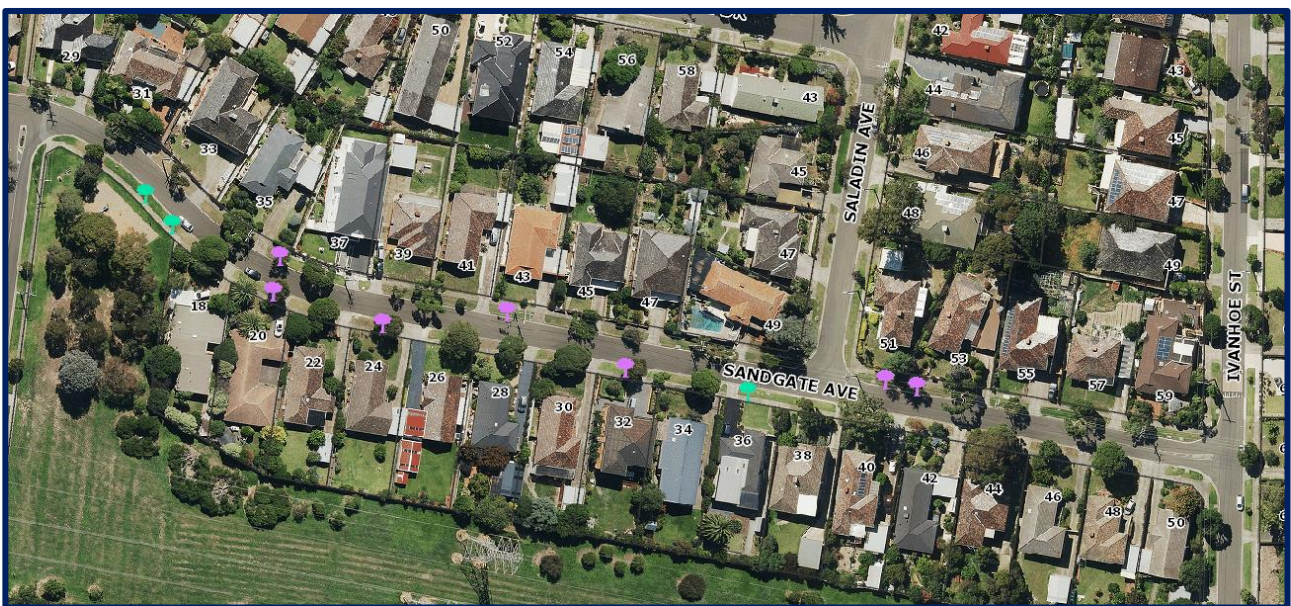
No.	Street Address	Assessment Outcome	Follow Up Action
1	2/4 Sandgate Avenue	Vacant Site	New tree to be planted
2	3 Sandgate Avenue	Vacant Site	New tree to be planted
3	9 Sandgate Avenue	Vacant Site	New tree to be planted
4	14 - 16 Sandgate Avenue	Vacant Site	New tree to be planted
5	14 - 16 Sandgate Avenue	Vacant Site	New tree to be planted
6	36 Sandgate Avenue	Vacant Site	New tree to be planted
7	2/8 Ascot Court	Vacant Site	New tree to be planted

Street Overview

The map below details the removals, replacements and infill plantings. All other trees have been assessed as having more than 2 years useful life and will be retained.

Street Overview Legend

-  Tree to be Removed and Replaced
-  New Tree
-  Tree Removed with No Replacement



Proposed Tree Species Options

Council's Street Tree Strategy team have created three (3) options to choose from using the most appropriate species for the location.

Option 1 – Single species (both sides of the road)

Lagerstroemia indica x *L. fauriei* 'Tuscarora' (Tuscarora Crepe Myrtle)



This deciduous tree has small oval shaped green leaves that turn a stunning reddish/orange in the autumn and beautiful coral red-crikkled flowers that are borne in late summer. The smooth bark is beige coloured with red-brown streaks.

Mature Size

Height x Width (m): 4 x 5 m

Form: V-Shaped

Option 2 – Single species (both sides of the road)

Eucalyptus leucoxylon rosea 'Scarlet' (Dwarf Yellow Gum)



The *Eucalyptus leucoxylon rosea* 'Scarlet' has an exceptional flowering form and is drought tolerant. 'Scarlet' is grafted onto *Eucalyptus leucoxylon rosea* providing exceptional flowering performance and vibrant flower colour.

Mature Size

Height x Width (m): 7 x 4 m

Form: Round

Option 3 – Single species (both sides of the road)

Callistemon viminalis (Weeping Bottle Brush)



This is a pretty bird-attracting tree with a heavy crown due to the profusion of brilliant red flowers in spring and summer. It is the weight of these flowers that gives it a pendulous habit.

Mature Size

Height x Width (m): 6 – 8 x 6 – 8 m

Form: Round