




Tree Removals

The table below lists the details of the trees to be removed, including tree location, tree species and condition assessment. For further location details, please refer to the street map outlining all removals, replacements and infill planting, or alternatively each tree has had a reference tag attached, these tags will correspond to the reference number below for on-site identification.

Ref No.	Street Address	Assessment Outcome	Follow Up Action	Current Tree Species	Tree Condition Assessment (*ULE <2 Years)	Tree Image
31	4 Myriong Street	Tree to be removed	Replacement tree to be planted	Callistemon viminalis	One of 3 major leaders is dead.	
32	45 Myriong Street	Tree to be removed	No Replacement tree to be planted	Eriobotrya japonica	Some dieback and some decay in primary limbs.	
33	2/6 Beleura Grove	Tree to be removed	Replacement tree to be planted	Callistemon viminalis	Dieback through crown >25% and some epicormic development.	

Infill Planting Locations




The table below lists the details of the locations where trees will be planted in currently vacant sites along Myriong Street, Clayton. For further location details, please refer to the street map outlining all removals, replacements and infill planting.

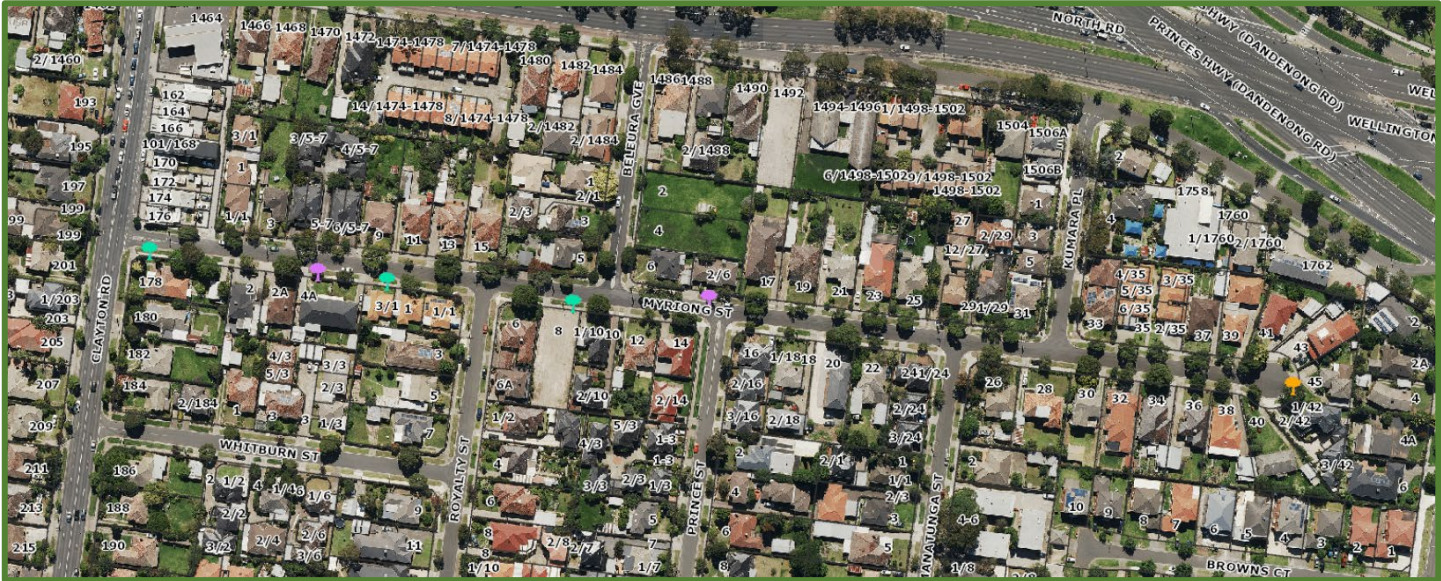
No.	Street Address	Assessment Outcome	Follow Up Action
1	8 Myriong Street	Vacant Site	New tree to be planted
2	3/1 Royalty Street	Vacant Site	New tree to be planted
3	178 Clayton Road	Vacant Site	New tree to be planted

Street Overview

The map below details the removals, replacements and infill plantings. All other trees have been assessed as having more than two years' useful life and will be retained.

Street Overview Legend

-  Tree to be Removed and Replaced
-  New Tree
-  Tree Removed with No Replacement




Proposed Tree Species Options

Council’s Street Tree Strategy team has created three (3) options to choose from using the most appropriate species for the location.

Option 1 – Single species (both sides of the road)

<i>Callistemon viminalis</i> (Weeping Bottle Brush)	
 	<p>This is a pretty bird-attracting tree with a heavy crown due to the profusion of brilliant red flowers in spring and summer. It is the weight of these flowers that gives it a pendulous habit.</p> <p>Mature Size</p> <p>Height x Width (m): 6m-8m x 6m-8m</p> <p>Form: Round</p>

Option 2 – Single species (both sides of the road)

<i>Corymbia citriodora</i> 'Scentuous' (Dwarf Scented Lemon Gum)	
	<p>This is a slightly narrow domed tree that doesn't shed its branches. It has a smooth trunk that may be slightly mottled. Leaves are narrow and highly aromatic when crushed, smelling strongly of lemon. This tree features lovely cream-coloured flowers in summer.</p>
	<p>Mature Size</p> <p>Height x Width (m): 7m x 3 m</p> <p>Form: Oval</p>

Option 3 – Single species (both sides of the road)

***Koelreuteria paniculata* (Golden Rain Tree)**



This species is an elegant small tree. It has serrated green, pinnate leaves and branches, which droop at the ends creating a slight weeping effect. The foliage turns bronze to gold in autumn. In summer, chains of bright yellow flowers are produced, followed by papery lantern-like seed pods which hang from the tree in large clusters.

Mature Size

Height x Width (m): 7m-10m x 10m

Form: Round