





Tree Removals

The table below lists the details of the trees to be removed, including tree location, tree species and condition assessment. For further location details, please refer to the street map outlining all removals, replacements and infill planting, or alternatively each tree has had a reference tag attached, these tags will correspond to the reference number below for on-site identification.

Ref No.	Street Address	Assessment Outcome	Follow Up Action	Current Tree Species	Tree Condition Assessment (*ULE <2 Years)	Tree Image
35	10 Marbray Drive	Tree to be removed	Replacement tree to be planted	<i>Liquidamber styraciflua</i>	Tree is dead	
37	30 Marbray Drive	Tree to be removed	No replacement tree to be planted	<i>Melaleuca styphelioides</i>	Tree is in decline and past the point of reasonable recovery	
38	9 Marbray Drive	Tree to be removed	Replacement tree to be planted	<i>Grevillea robusta</i>	Significant dieback in canopy. Any remedial works would still not be expected to leave a viable street tree	

Ref No.	Street Address	Assessment Outcome	Follow Up Action	Current Tree Species	Tree Condition Assessment (*ULE <2 Years)	Tree Image
39	2A Marbray Drive	Tree to be removed	Replacement tree to be planted	<i>Liquidamber styraciflua</i>	Significant decline and past the point of reasonable recovery	

Infill Planting Location




The table below lists the details of the locations where trees will be planted in currently vacant sites along Marbray Drive, Glen Waverley. For further location details, please refer to the street map outlining all removals, replacements and infill planting.

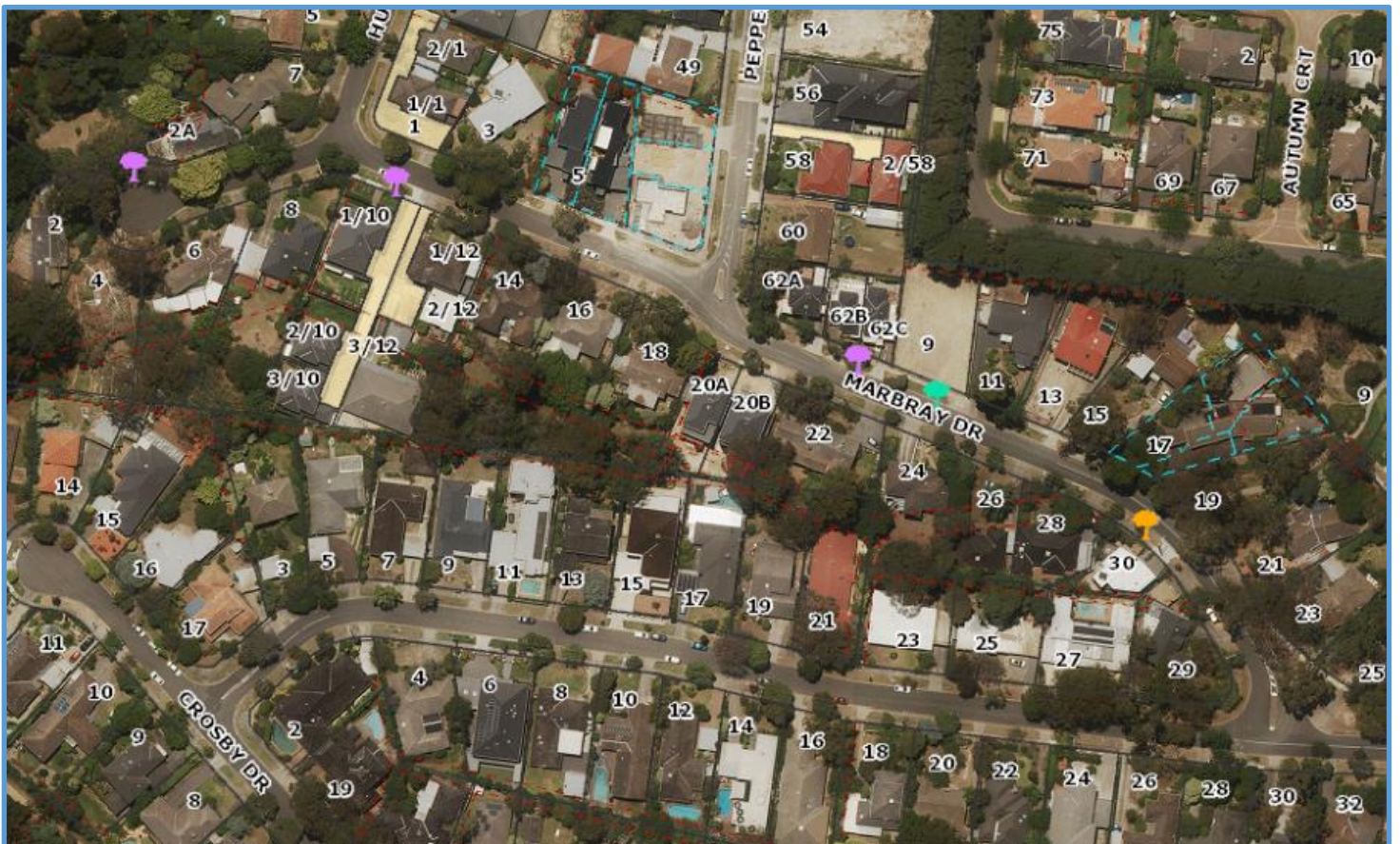
No.	Street Address	Assessment Outcome	Follow Up Action
1	9 Marbray Drive	Vacant Site	New tree to be planted

Street Overview

The map below details the removals, replacements and infill plantings. All other trees have been assessed as having more than 2 years useful life and will be retained.

Street Overview Legend

-  Tree to be Removed and Replaced
-  New Tree
-  Tree Removed with No Replacement




Proposed Tree Species Options

Council's Street Tree Strategy team has created three (3) options to choose from using the most appropriate species for the location.

Option 1 – Single species (both sides of the road)

<i>Buckinghamia celsissima</i> (Ivory Curl Tree)	
	<p>This tree has attractive foliage - the juvenile leaves are often lobed while the new growth is an attractive bronze colour. Flowers are white to cream and occur in summer, attracting birds and insects.</p> <p>Mature Size</p> <p>Height x Width (m): 8 – 15 x 8 – 12 m</p> <p>Form: Round</p>

Option 2 – Single species (both sides of the road)

<i>Eucalyptus leucoxylon rosea</i> 'Scarlet' (Dwarf Yellow Gum)	
	<p>The Eucalyptus leucoxylon rosea "Scarlet" has an exceptional flowering form and is drought tolerant. "Scarlet" is grafted onto Eucalyptus leucoxylon rosea providing exceptional flowering performance and vibrant flower colour.</p> <p>Mature Size</p> <p>Height x Width (m): 7 x 4 m</p> <p>Form: Round</p>

Option 3 – Single species (both sides of the road)

Callistemon viminalis (Weeping Bottle Brush)



This is a pretty, bird-attracting tree with a heavy crown due to the profusion of brilliant red flowers in spring and summer. It is the weight of these flowers that gives it a pendulous habit.

Mature Size

Height x Width (m): 6 – 8 x 6 – 8 m

Form: Round