


Tree Removals

The table below lists the details of the trees to be removed, including tree location, tree species and condition assessment. For further location details, please refer to the street map outlining all removals, replacements and infill planting. Alternatively, each tree has had a reference tag attached and these tags will correspond to the reference number below for on-site identification.

Ref No.	Street Address	Assessment Outcome	Follow Up Action	Current Tree Species	Tree Condition Assessment (*ULE <2 Years)	Tree Image
23	6 Kenilworth Crescent	Tree to be removed	Replacement tree to be planted	<i>Agonis flexuosa</i>	One of three leaders is dead and small split in crown union.	
24	10 Kenilworth Crescent	Tree to be removed	Replacement tree to be planted	<i>Prunus cerasifera Nigra</i>	Poor vigour and foliage density.	
25	26 Kenilworth Crescent	Tree to be removed	Replacement tree to be planted	<i>Agonis flexuosa</i>	Dieback to at least 15% of crown. Small fruiting body on the footpath side of tree, near the crown union.	

Ref No.	Street Address	Assessment Outcome	Follow Up Action	Current Tree Species	Tree Condition Assessment (*ULE <2 Years)	Tree Image
26	39 Kenilworth Crescent	Tree to be removed	Replacement tree to be planted	<i>Agonis flexuosa</i>	Significant decay split from crown union to the ground.	

Infill Planting Location




The table below lists the details of the locations where trees will be planted in currently vacant sites along Kenilworth Crescent, Glen Waverley. For further location details, please refer to the street map outlining all removals, replacements and infill planting.

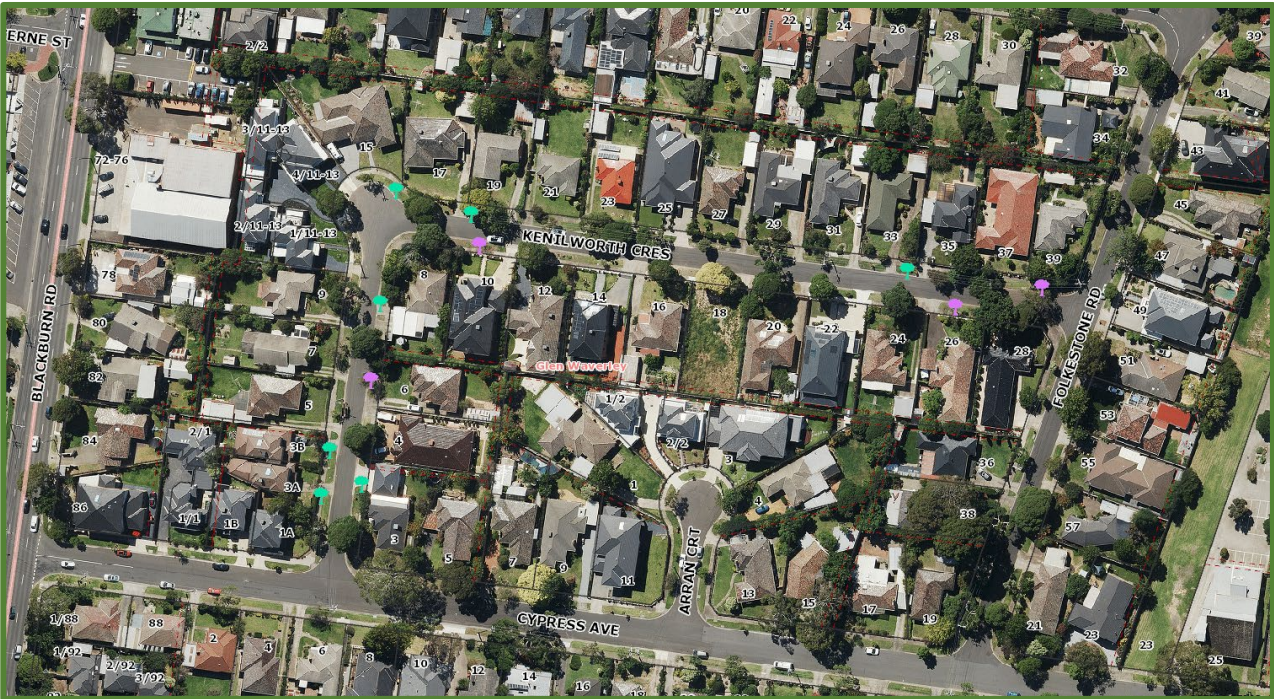
No.	Street Address	Assessment Outcome	Follow Up Action
1	3a Kenilworth Crescent	Vacant Site	New tree to be planted
2	3b Kenilworth Crescent	Vacant Site	New tree to be planted
3	8 Kenilworth Crescent	Vacant Site	New tree to be planted
4	15 Kenilworth Crescent	Vacant Site	New tree to be planted
5	19 Kenilworth Crescent	Vacant Site	New tree to be planted
6	33 Kenilworth Crescent	Vacant Site	New tree to be planted
7	3 Cypress Avenue	Vacant Site	New tree to be planted

Street Overview

The map below details the removals, replacements and infill plantings. All other trees have been assessed as having more than two years' useful life and will be retained.

Street Overview Legend




-  Tree to be Removed and Replaced
-  New Tree
-  Tree Removed with No Replacement



Proposed Tree Species Options

Council’s Street Tree Strategy team has created three (3) options to choose from using the most appropriate species for the location.

Option 1 – Single species (both sides of the road)

<i>Tristaniopsis laurina</i> ‘Luscious’ (Luscious Kanooka)	
	<p>An Australian native. Leaves are dark green, shiny and large. New growth starts in a distinctive copper colour and further interest appears over time with the branches developing deep purple coloured bark which peels back to reveal a smooth, cream trunk. Flowers are yellow and sweetly perfumed, appearing in clusters through summer.</p>
 	<p>Mature Size</p> <p>Height x Width (m): 8m x 4 m</p> <p>Form: Oval</p>

Option 2 – Single species (both sides of the road)

***Lophostemon confertus* (Queensland Brush Box)**



This is a fast growing tree. Dome-like in shape, it develops a very dense foliage cover of dark green, leathery leaves providing good shade for the summer months. Summer also brings clusters of small white flowers whose stamens give them a decorative fluffy appearance.

Mature Size

Height x Width (m): 10m x 15 m

Form: Oval

Option 3 – Combination of species

Power line side of road

Acer campestre 'Elsrijk' (Elsrijk Maple)



A small tree with a dense round canopy and a somewhat corky bark. Small leaves with rounded lobes, dark green in summer, which turn a beautiful clear yellow in the autumn. Green inconspicuous flowers from September to October. Paired samaras spread throughout the tree and hang in clusters well into winter.

Mature Size

Height x Width (m): 7m x 3 m

Form: Oval

Non-power line side of road

Acer rubrum 'October Glory' (Red Maple)



A medium-sized tree, the *Acer rubrum* 'October Glory' is a well-structured tree that is adaptive to a wide range of soil and conditions. The *Acer rubrum* 'October Glory' is an ideal specimen tree in public parks and gardens, and streets. The autumn colours range from brilliant red-orange to pink-red. Paired samaras often have red-tinged wings.

Mature Size

Height x Width (m): 12m x 10m

Form: Oval