

Street Tree Renewal Information – Hillview Avenue, Mount Waverley

The table below lists the details of the trees to be removed. For replacement details, please refer to map below.

No	Location	Species	Condition Assessment
1.	45 Hillview Avenue	<i>Callistemon Kings Park Special</i>	Active splitting in trunk to 10mm wide, bracket fungi at base of trunk, < 2 Years ULE
2.	37 Hillview Avenue	<i>Fraxinus oxycarpa</i>	Decay in old wounds, suckering profusely throughout, < 2 Years ULE.
3.	27 Hillview Avenue	<i>Prunus cerasifera Nigra</i>	Three codominant unions, decay evident in all, decay extends throughout structural branches, < 2 Years ULE.
4.	2/4 Imperial Avenue	<i>Melaleuca linariifolia</i>	Mechanical damage < 2 Years ULE.
5.	15 Hillview Avenue	<i>Prunus sp.</i>	Tree has failed, 60mm stump with sucker growth, < 2 Years ULE.
6.	1/28 Hillview Avenue	<i>Melaleuca lanceolata</i>	50mm splits in lower trunk, wounding in canopy, < 2 Years ULE.
7.	78 Hillview Avenue	<i>Hakea salicifolia</i>	Active splitting in trunk < 2 Years ULE.
8.	80 Hillview Avenue	<i>Melaleuca armillaris</i>	Splitting in trunk, < 2 Years ULE.

*< 2 Years ULE - with a useful life expectancy of less than two years

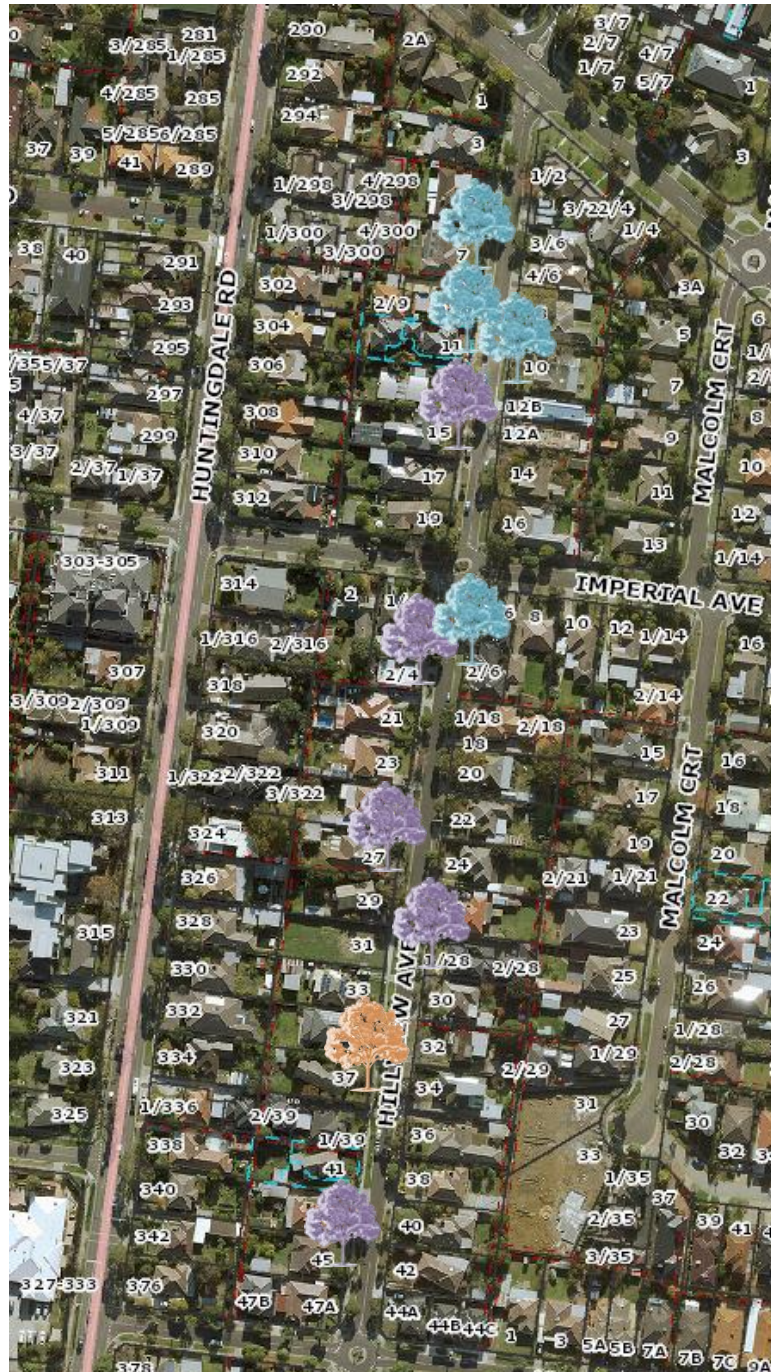
The table below lists the details of the locations and tree species to be planted in vacant sites along Hillview Avenue, Mount Waverley.

No.	Street Location
1.	175 Waverley Road
2.	79 Hillview Avenue
3.	11 Hillview Avenue
4.	7 Hillview Avenue
5.	10 Hillview Avenue
6.	2/6 Imperial Avenue
7.	74 Hillview Avenue
8.	1/84 Hillview Avenue
9.	86 Hillview Avenue
10.	86 Hillview Avenue

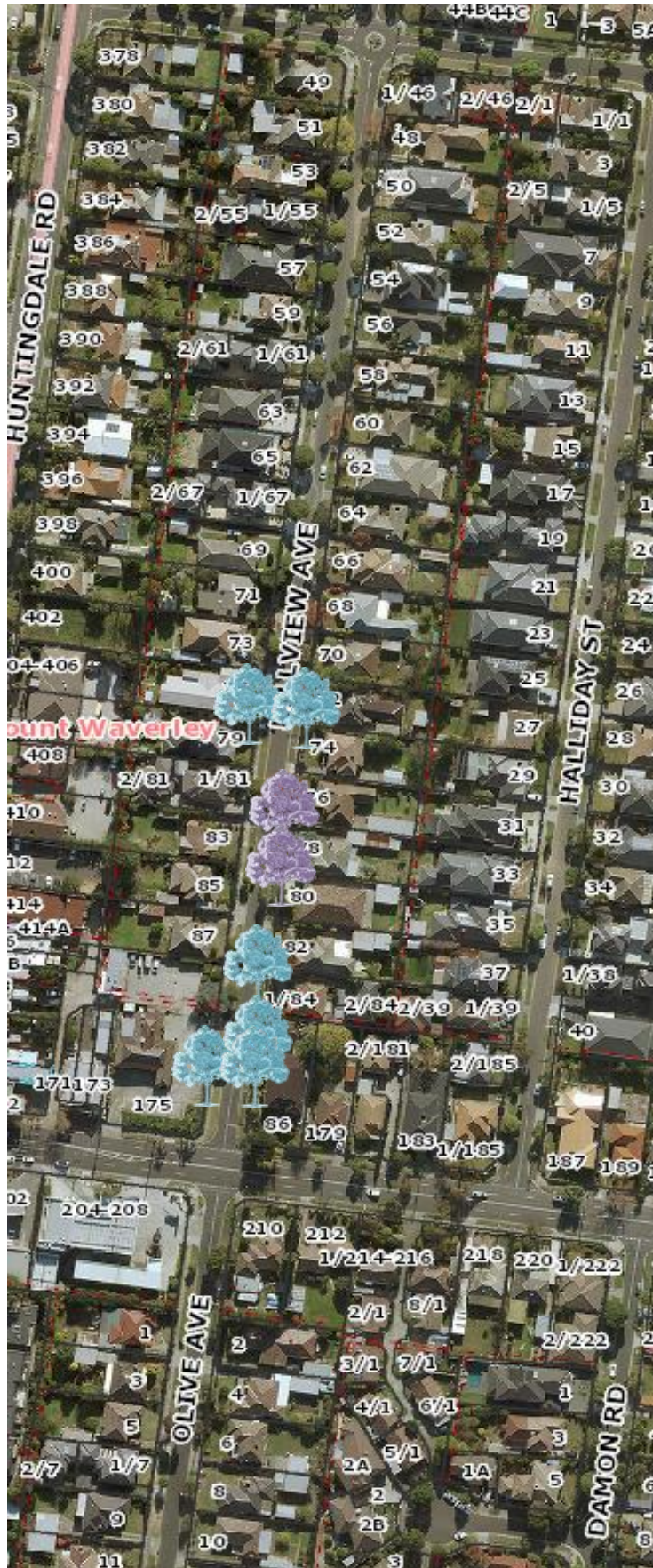
Street Tree Renewal Information – Hillview Avenue, Mount Waverley




MAP - Removals, Replacements & Infill Planting

The map below details the removals, replacements and infill plantings. All other trees have been assessed as having more than 2 years useful life and will be retained.



Street Tree Renewal Information – Hillview Avenue, Mount Waverley




Legend	
	New Tree To be planted
	Tree to be removed and replaced
	Tree to be removed but not replaced

Street Tree Renewal Information – Hillview Avenue, Mount Waverley

Proposed Tree Species Options

Option 1 – Single species (both sides of the road)



Callistemon Harkness (Harkness Bottlebrush)	
<p>Power line side and non-power line side</p> 	<p><i>Callistemon 'Harkness'</i> is one of the well-known Bottlebrushes that has been an excellent street tree for many years. This tree is slightly weeping, has long, stiff, grey-green leaves, and deeply-fissured, blackish-grey bark. The flowers are exceptional – crimson-red bottlebrushes to 200mm long, borne in late spring and early summer.</p> <p>Mature Size (h x w): 5 x 3m Form: Pendulous</p>

Option 2 – Single species (both sides of the road)

<p>Power line side and non-power line side</p> 	<p>A small native tree that exhibits patches of grey, white and a reddish-pink bark in older growth on smooth trunks. Its foliage is dark green to greenish blue and narrow in shape but still holds that typical pauciflora leaf; large, thick and waxy. The flowers attract butterflies, bees and birds</p> <p>Mature Size (h x w): 4-7 x 3-5 Form: Pendulous</p>
--	---

Street Tree Renewal Information – Hillview Avenue, Mount Waverley

Option 3 – Combination of species

<i>Acer campestre</i> 'Evelyn' (Queen Elizabeth Maple)	
Power line side 	This is a small to medium deciduous tree with upright branching habit. Small leaves with rounded lobes dark green in summer turning yellow in autumn. Flowers are green and inconspicuous. Mature Size (h x w): 8-10 x 7m Form: Round
<i>Acer X freemanii</i> 'Autumn Blaze' (Autumn Blaze Maple)	
Non power line side 	A medium, deciduous tree with oval to rounded canopy and straight trunk. Features deeply cut green leaves that turn to brilliant crimson-red in autumn. Works well as a feature tree for street landscapes. Mature Size (h x w): 13 x 10m Form: Oval/Round