



Street Tree Renewal Information – Stephenson's Road (High Street to Waverley Road) MOUNT WAVERLEY

Tree Removals.

The table below lists the details of the trees to be removed, including tree location, tree species and condition assessment. For replacement details, please refer to map below.

* < 2 Years ULE - with a useful life expectancy of less than two years

1.	Street Address	1/356 Stephenson's Road Mount Waverley
	Species	<i>Acmena smithii</i>
	Condition Assessment	* < 2 Years ULE, Declining health and not expected to recover, poor form and/or structure
	Tree Image	
2.	Street Address	385 Stephenson's Road Mount Waverley
	Species	<i>Eucalyptus scoparia</i>
	Condition Assessment	* < 2 Years ULE, Dead tree
	Tree Image	

Street Tree Renewal Information – Stephenson's Road (High Street to Waverley Road) MOUNT WAVERLEY

The table below lists the details of the locations where trees will be planted in vacant sites along Stephenson's Road (High Street to Waverley Road).

No.	Street Location
1.	214 Stephenson's Road MOUNT WAVERLEY VIC 3167
2.	215 Stephenson's Road MOUNT WAVERLEY VIC 3167
3.	215 Stephenson's Road MOUNT WAVERLEY VIC 3167
4.	216 Stephenson's Road MOUNT WAVERLEY VIC 3167
5.	217 Stephenson's Road MOUNT WAVERLEY VIC 3167
6.	218 Stephenson's Road MOUNT WAVERLEY VIC 3167
7.	221 Stephenson's Road MOUNT WAVERLEY VIC 3167
8.	225 Stephenson's Road MOUNT WAVERLEY VIC 3167
9.	227 Stephenson's Road MOUNT WAVERLEY VIC 3167
10.	229 Stephenson's Road MOUNT WAVERLEY VIC 3167
11.	233 Stephenson's Road MOUNT WAVERLEY VIC 3167
12.	235 Stephenson's Road MOUNT WAVERLEY VIC 3167
13.	235 Stephenson's Road MOUNT WAVERLEY VIC 3167
14.	237 Stephenson's Road MOUNT WAVERLEY VIC 3167
15.	241 Stephenson's Road MOUNT WAVERLEY VIC 3167
16.	243 Stephenson's Road MOUNT WAVERLEY VIC 3167
17.	318-322 Stephenson's Road MOUNT WAVERLEY VIC 3167
18.	318-322 Stephenson's Road MOUNT WAVERLEY VIC 3167
19.	326 Stephenson's Road MOUNT WAVERLEY VIC 3167

Street Tree Renewal Information – Stephensons Road (High Street to Waverley Road) MOUNT WAVERLEY

20.	331-343 Stephensons Road MOUNT WAVERLEY VIC 3167
21.	1/340 Stephensons Road MOUNT WAVERLEY VIC 3167
22.	345 Stephensons Road MOUNT WAVERLEY VIC 3167
23.	1/348 Stephensons Road MOUNT WAVERLEY VIC 3167
24.	355 Stephensons Road MOUNT WAVERLEY VIC 3167
25.	357 Stephensons Road MOUNT WAVERLEY VIC 3167
26.	359 Stephensons Road MOUNT WAVERLEY VIC 3167
27.	361 Stephensons Road MOUNT WAVERLEY VIC 3167
28.	362 Stephensons Road MOUNT WAVERLEY VIC 3167
29.	363 Stephensons Road MOUNT WAVERLEY VIC 3167
30.	364 Stephensons Road MOUNT WAVERLEY VIC 3167
31.	366 Stephensons Road MOUNT WAVERLEY VIC 3167
32.	370 Stephensons Road MOUNT WAVERLEY VIC 3167
33.	371 Stephensons Road MOUNT WAVERLEY VIC 3167
34.	381 Stephensons Road MOUNT WAVERLEY VIC 3167
35.	393 Stephensons Road MOUNT WAVERLEY VIC 3167
36.	389 – 397 Stephensons Road MOUNT WAVERLEY VIC 3167
37.	389 – 397 Stephensons Road MOUNT WAVERLEY VIC 3167

Street Tree Renewal Information – Stephensons Road (High Street to Waverley Road) MOUNT WAVERLEY

MAP - Removals, Replacements & Infill Planting

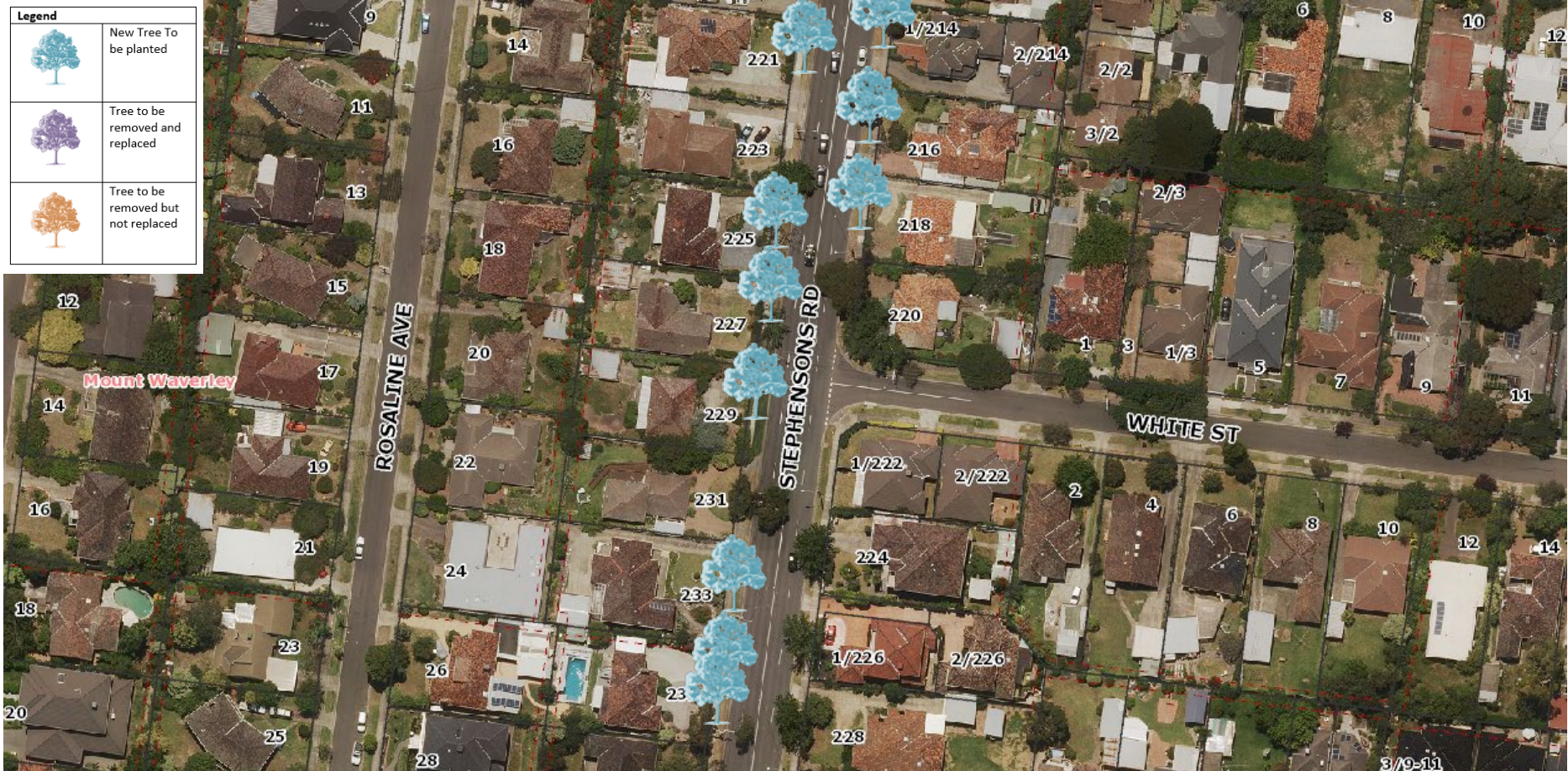
The maps below details the removals, replacements and infill plantings. All other trees have been assessed as having more than 2 years useful life and will be retained.



Street Tree Renewal Information – Stephenson's Road (High Street to Waverley Road) MOUNT WAVERLEY

MAP - Removals, Replacements & Infill Planting

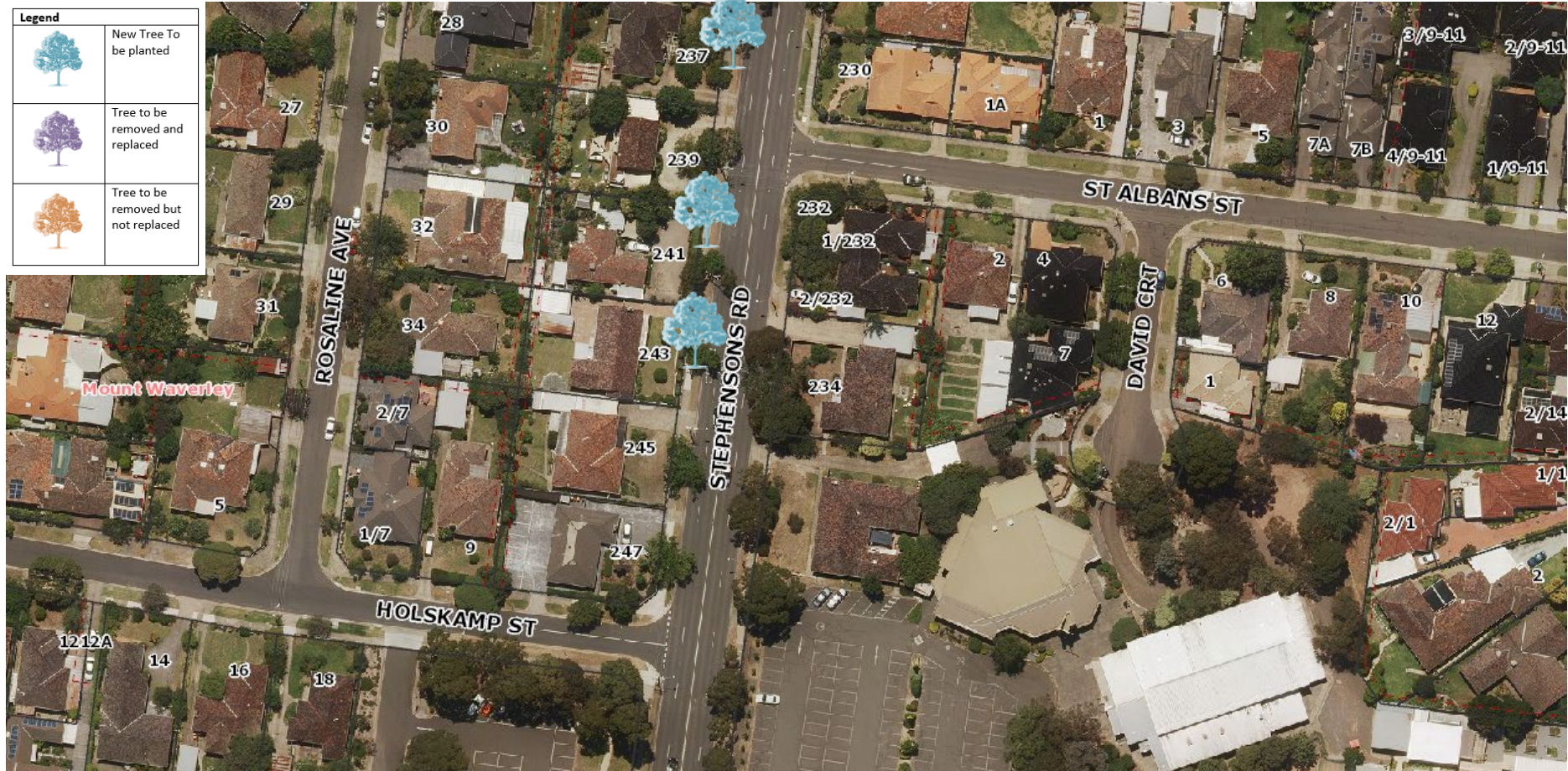
The maps below details the removals, replacements and infill plantings. All other trees have been assessed as having more than 2 years useful life and will be retained.



Street Tree Renewal Information – Stephensons Road (High Street to Waverley Road) MOUNT WAVERLEY

MAP - Removals, Replacements & Infill Planting

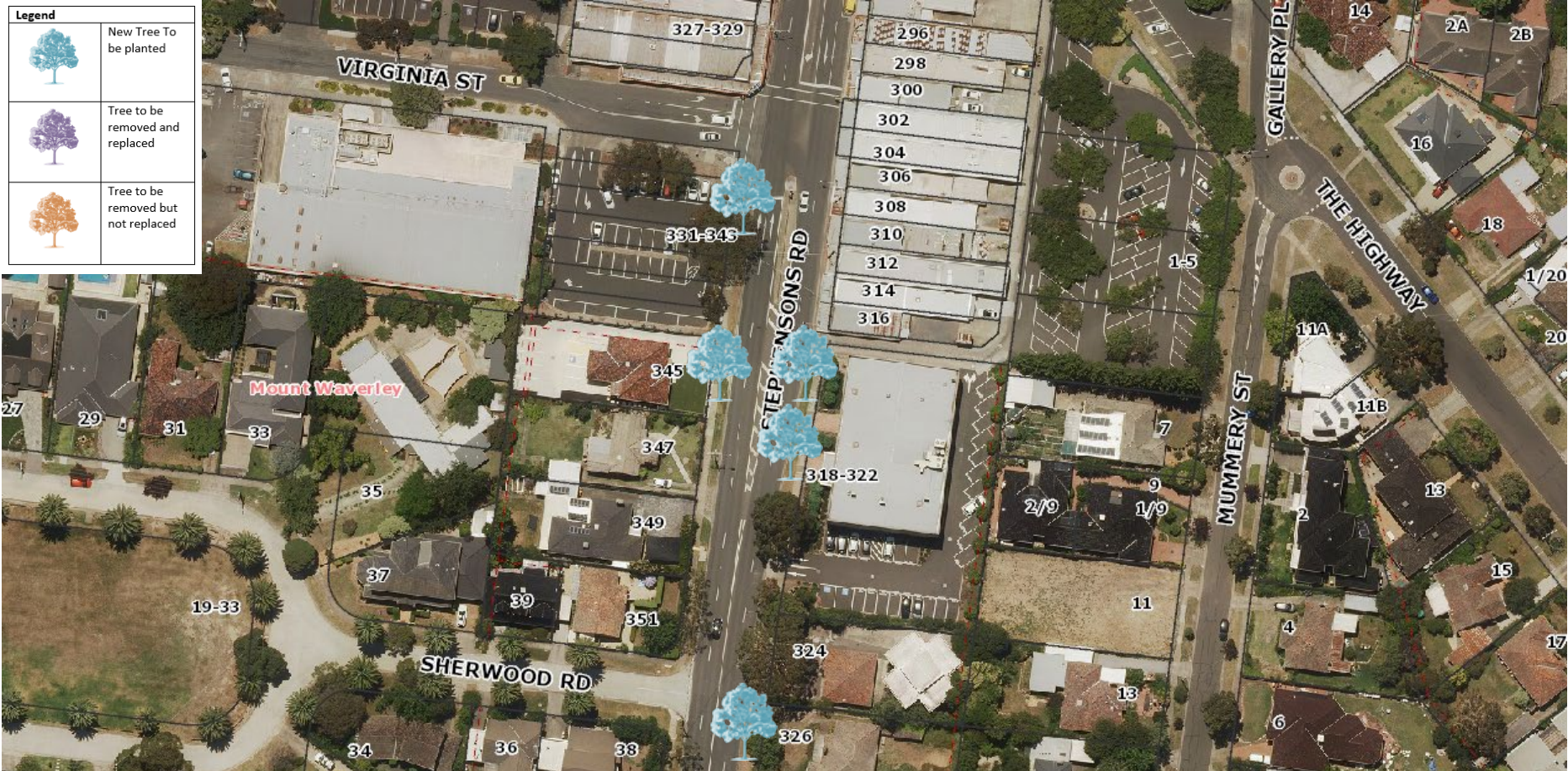
The maps below details the removals, replacements and infill plantings. All other trees have been assessed as having more than 2 years useful life and will be retained.



Street Tree Renewal Information – Stephensons Road (High Street to Waverley Road) MOUNT WAVERLEY

MAP - Removals, Replacements & Infill Planting

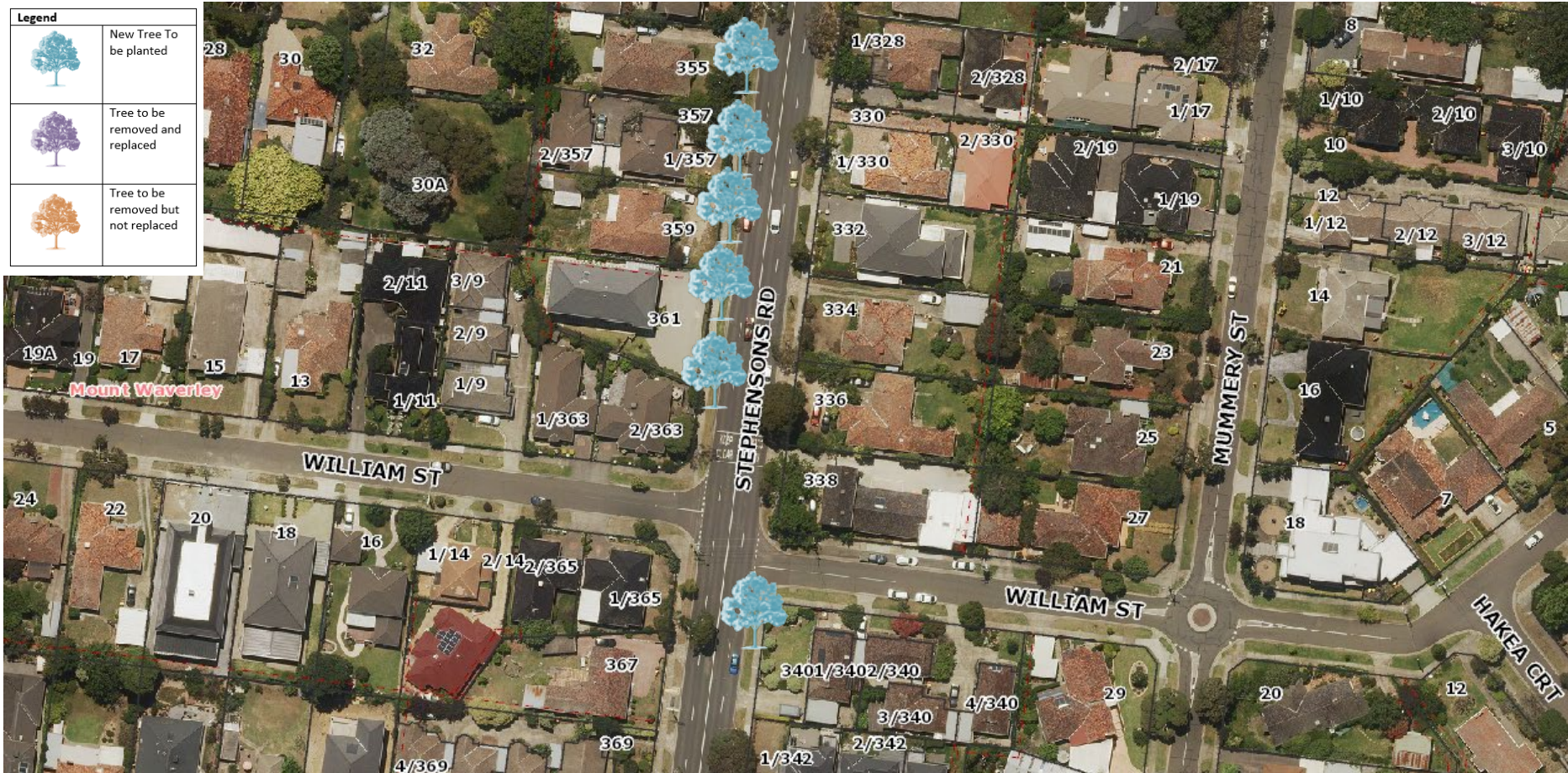
The maps below details the removals, replacements and infill plantings. All other trees have been assessed as having more than 2 years useful life and will be retained.



Street Tree Renewal Information – Stephensons Road (High Street to Waverley Road) MOUNT WAVERLEY

MAP - Removals, Replacements & Infill Planting

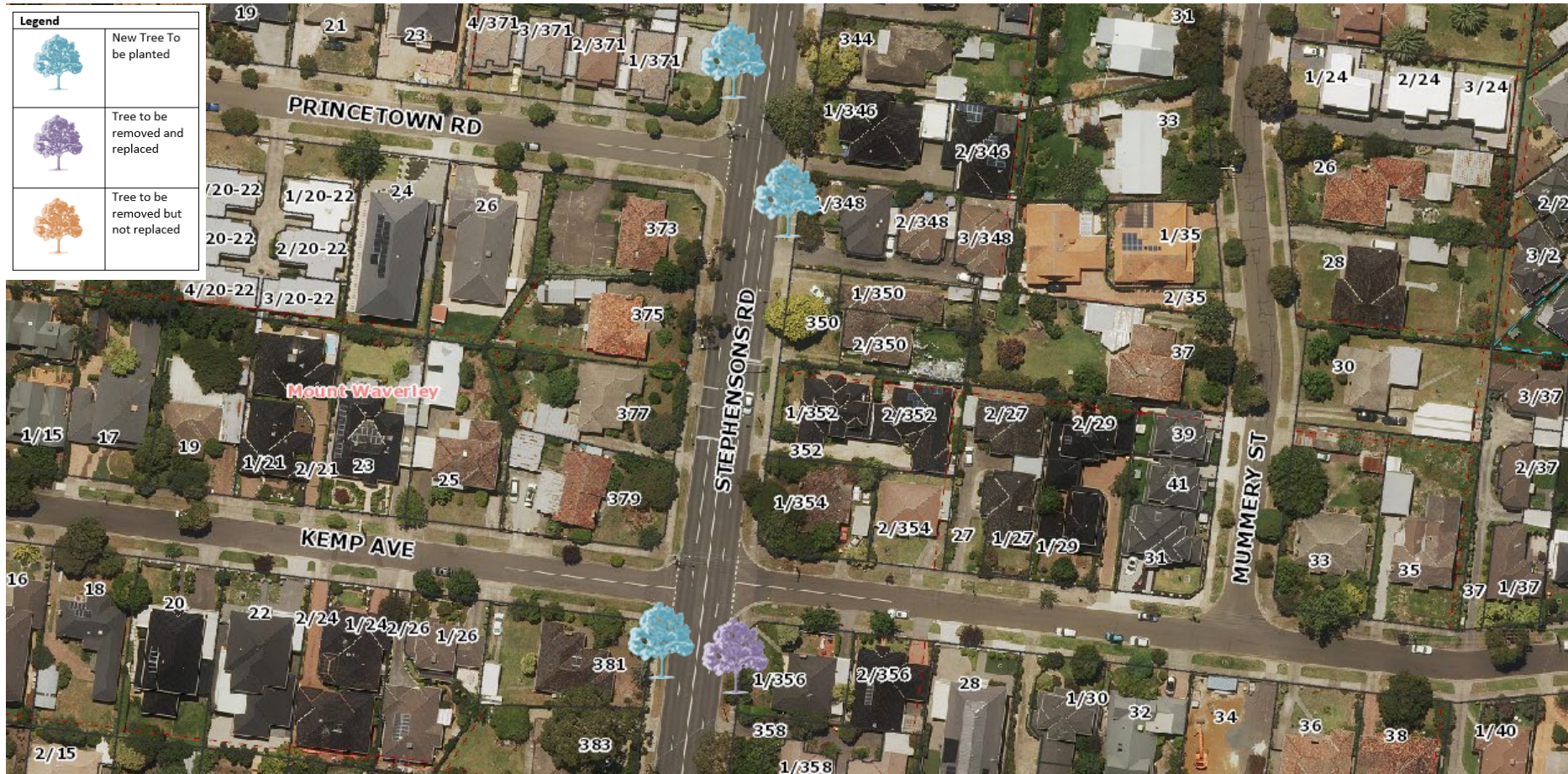
The maps below details the removals, replacements and infill plantings. All other trees have been assessed as having more than 2 years useful life and will be retained.



Street Tree Renewal Information – Stephensons Road (High Street to Waverley Road) MOUNT WAVERLEY

MAP - Removals, Replacements & Infill Planting

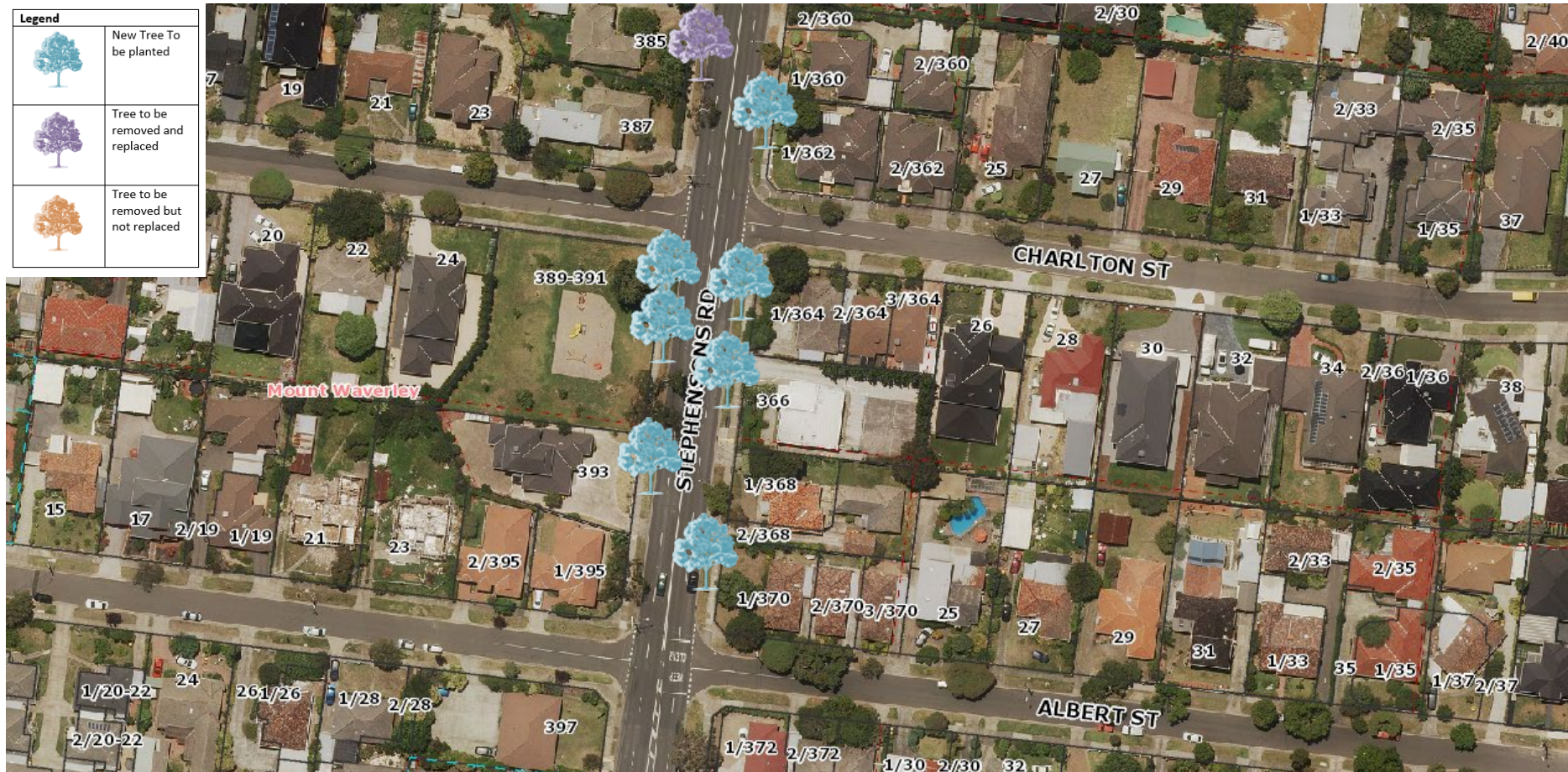
The maps below details the removals, replacements and infill plantings. All other trees have been assessed as having more than 2 years useful life and will be retained.



Street Tree Renewal Information – Stephensons Road (High Street to Waverley Road) MOUNT WAVERLEY


MAP - Removals, Replacements & Infill Planting

The maps below details the removals, replacements and infill plantings. All other trees have been assessed as having more than 2 years useful life and will be retained.



Street Tree Renewal Information – Stephenson's Road (High Street to Waverley Road) MOUNT WAVERLEY

Proposed Tree Species

<i>Pyrus calleryana</i> 'Capital' (Capital Ornamental Pear)	
	<p>This tree has a narrow growth habit with luscious shiny green leaves that hang vertically from branches. An attractive curl in the foliage adds further interest and the slender, columnar shape lends itself well to tight spaces. In autumn, leaves turn a purple-red colour and spring brings a beautiful display of lovely white flowers followed by small, russet coloured fruits.</p> <p>Mature Size (height x spread): 11m x 3m Form: Fastigate</p>