

Shared Path Construction (SSRIP) and Street Tree Strategy – Browns Road

The table below lists the details of the trees to be removed due to SSRIP works. Please refer to map below for replacement details.

No.	Street Address	Species	Condition Assessment
1.	22 Wellington Road	<i>Melia azedarach</i>	Removal due to SSRIP
2.	Opposite 1786-1788 Dandenong Road	<i>Populus spp.</i>	Removal due to SSRIP
3.	2-1764 Dandenong Road	<i>Pyrus spp.</i>	Removal due to SSRIP
4.	2-1764 Dandenong Rd in Browns Road	<i>Pyrus spp</i>	Removal due to SSRIP
5.	1/1-3 Seascape St. in Browns Road	<i>Pyrus spp</i>	Removal due to SSRIP
6.	2/1-3 Seascape St. in Browns Road	<i>Pyrus spp.</i>	Removal due to SSRIP
7.	6 Browns Road	<i>Photinia spp.</i>	Removal due to SSRIP
8.	6 Browns Road	<i>Pyrus spp.</i>	Removal due to SSRIP
9.	1 Browns Crt.	<i>Pyrus spp.</i>	Removal due to SSRIP
10.	1 Browns Crt.	<i>Melaleuca spp</i>	Removal due to SSRIP
11.	20 Browns Crt.	<i>Melaleuca spp.</i>	Removal due to SSRIP
12.	Fregon reserve frontage	<i>Cupressus sempervirens</i>	Removal due to SSRIP
13.	Fregon reserve frontage	<i>Cupressus sempervirens</i>	Removal due to SSRIP
14.	Fregon reserve frontage	<i>Melaleuca spp.</i>	Removal due to SSRIP
15.	Fregon reserve frontage	<i>Cratageus spp.</i>	Removal due to SSRIP
16.	Fregon reserve frontage	<i>Pyrus spp.</i>	Removal due to SSRIP
17.	Fregon reserve frontage	<i>Corymbia ficifolia</i>	Removal due to SSRIP
18.	Fregon reserve frontage	<i>Cupressus sempervirens</i>	Removal due to SSRIP
19.	In Fregon reserve (opposite 1/2 Atlantic St)	<i>Eucalyptus spp (dead)</i>	Removal due to SSRIP
20.	Monash Medical Centre carpark	<i>Pyrus spp.</i>	Removal due to SSRIP

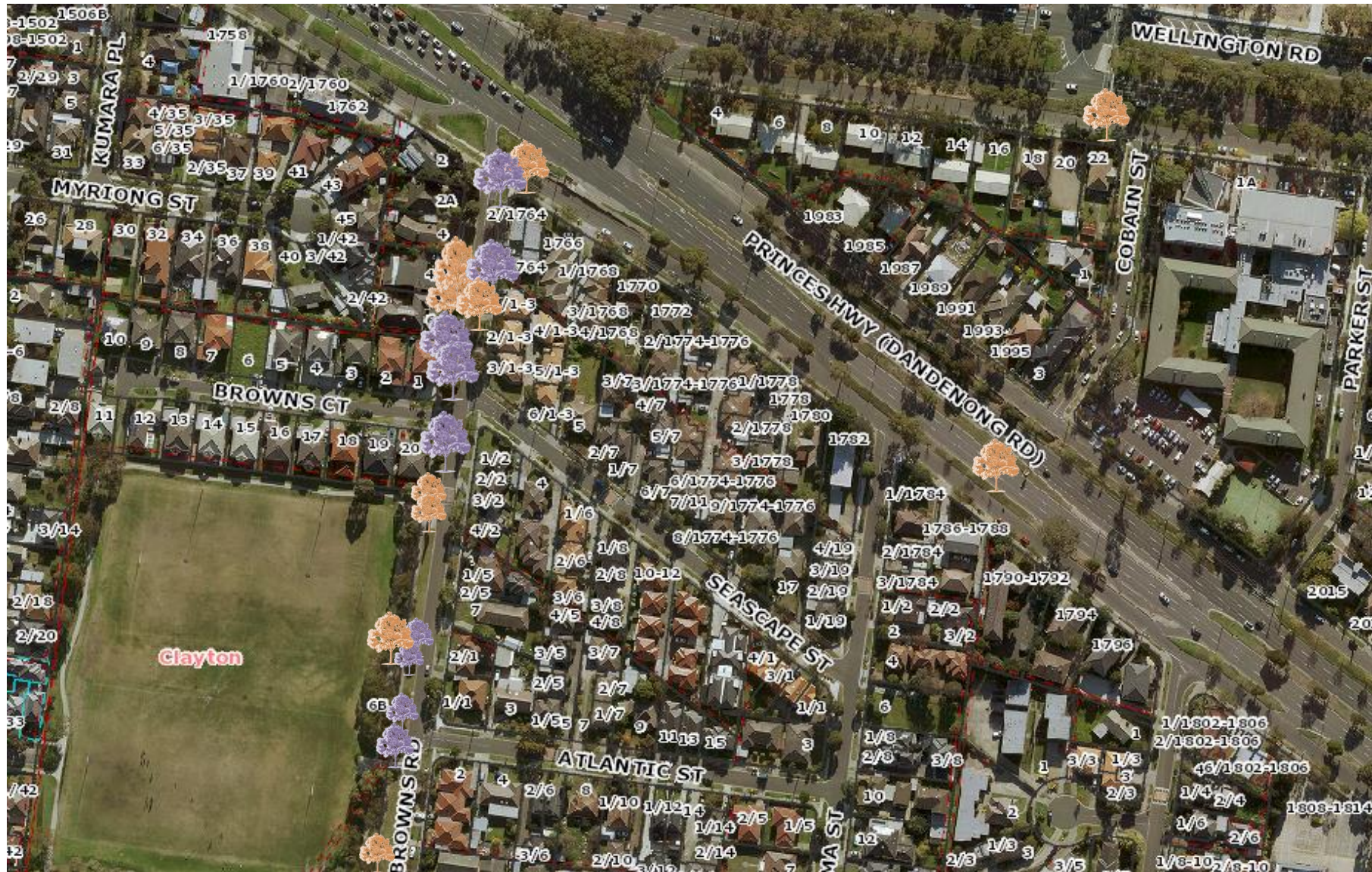
Shared Path Construction (SSRIP) and Street Tree Strategy – Browns Road

21.	8-10 Browns Road	<i>Corymbia spp.</i>	Removal due to SSRIP
22.	8-10 Browns Road	<i>Pyrus spp.</i>	Removal due to SSRIP
23.	12 Browns Road	<i>Cratageus spp.</i>	Removal due to SSRIP
24.	14 Browns Road	<i>Corymbia ficifolia</i>	Removal due to SSRIP

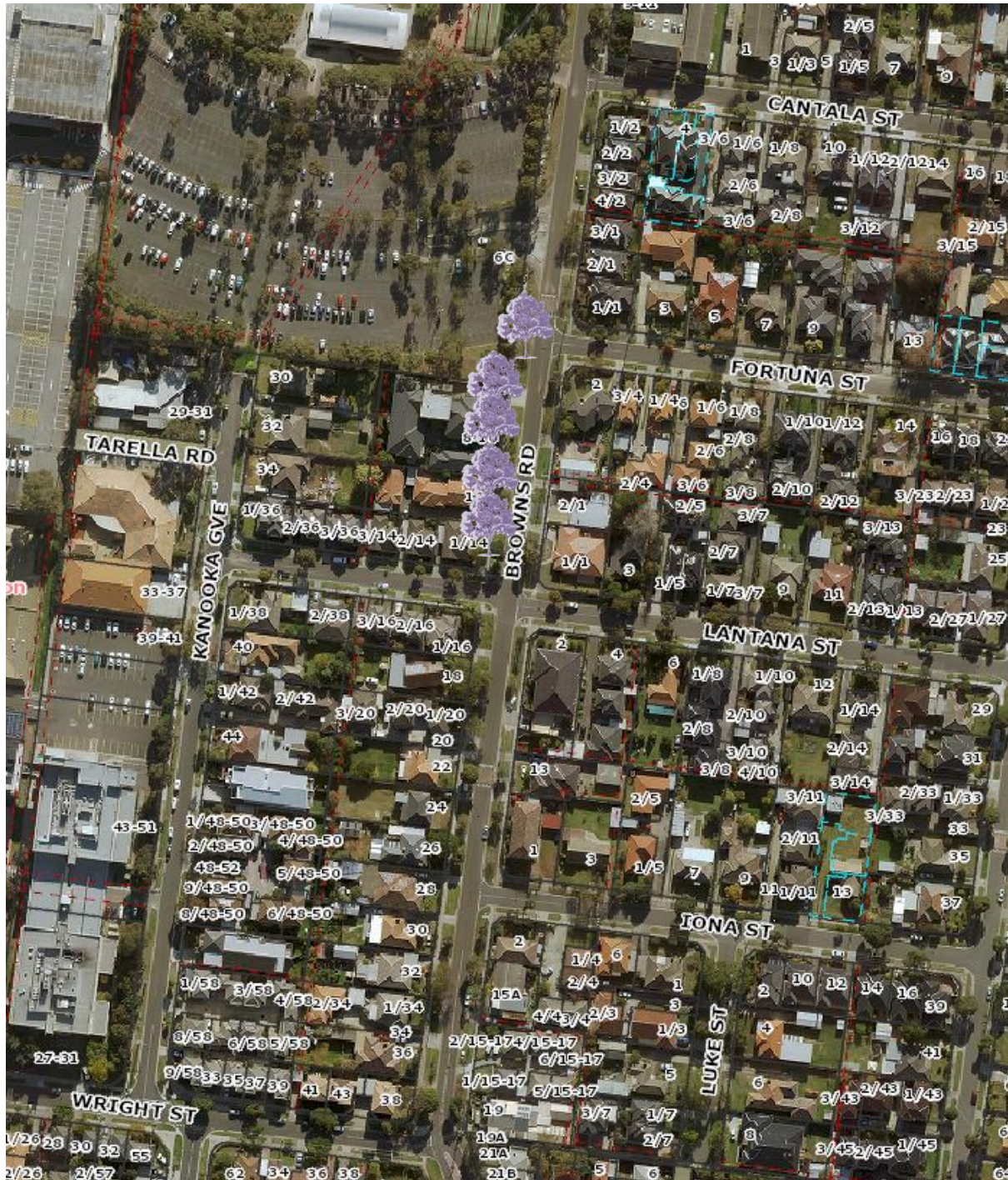
Shared Path Construction (SSRIP) and Street Tree Strategy – Browns Road




MAP – Removals and Replacements – SSRIP

The map below details the removals and replacements for the SSRIP works.



Shared Path Construction (SSRIP) and Street Tree Strategy – Browns Road



Legend	
	New Tree To be planted
	Tree to be removed and replaced
	Tree to be removed but not replaced

Shared Path Construction (SSRIP) and Street Tree Strategy – Browns Road

The table below lists the details of the trees to be removed due to Street Tree Strategy works. Please refer to map below for replacement details.

Shared Path Construction (SSRIP) and Street Tree Strategy – Browns Road

1.	108 Browns Road	<i>Crataegus sp.</i>	Declining. Little to no amenity, < 2 Years ULE.
2.	96 Browns Road	<i>Crataegus sp.</i>	Declining. Little to no amenity, < 2 Years ULE.
3.	90 Browns Road	<i>Crataegus sp.</i>	Declining. Little to no amenity, < 2 Years ULE.
4.	86 Browns Road	<i>Pinus halapensis</i>	Healthy but very poor form. Remedial pruning cannot rectify.
5.	86 Browns Road	<i>Crataegus sp.</i>	40% of canopy dead, major failures, wounds and decay in trunk, < 2 Years ULE.
6.	80 Browns Road	<i>Corymbia eximia</i> 'Nana'	Declining health, poor form, < 2 Years ULE.
7.	78 Browns Road	<i>Crataegus sp.</i>	Declining. Little to no amenity, < 2 Years ULE.
8.	72 Browns Road	<i>Crataegus sp.</i>	Declining. Little to no amenity, < 2 Years ULE.
9.	70 Browns Road	<i>Crataegus sp.</i>	Declining. Little to no amenity, < 2 Years ULE.
10.	56 Browns Road	<i>Corymbia ficifolia</i>	Stressed, unlikely to recover, wounded trunk, < 2 Years ULE.
11.	54 Browns Road	<i>Crataegus sp.</i>	Declining. Little to no amenity, < 2 Years ULE.
12.	50 Browns Road	<i>Crataegus sp.</i>	Declining. Little to no amenity, < 2 Years ULE.
13.	48 Browns Road	<i>Melaleuca styphelioides</i>	Suppressed and unlikely to recover, < 2 Years ULE.
14.	44 Browns Road	<i>Melaleuca styphelioides</i>	Declining health, canopy sparse, 20% dieback, < 2 Years ULE.
15.	2/2 Seascape Street	<i>Crataegus sp.</i>	Declining. Little to no amenity, < 2 Years ULE.
16.	4/2 Seascape Street	<i>Melaleuca styphelioides</i>	Declining. Little to no amenity, < 2 Years ULE.
17.	1/2 Atlantic Street	<i>Melaleuca styphelioides</i>	Canopy declining, foliage small, 30% canopy thinning, < 2 Years ULE.
18.	1/1 Atlantic Street	<i>Corymbia ficifolia</i>	Codominant leaders. Will not develop into tree with good amenity, < 2 Years ULE.
19.	15A Browns Road	<i>Melaleuca styphelioides</i>	Canopy declining, foliage small, 30% canopy thinning, < 2 Years ULE.
20.	21C Browns Road	<i>Eucalyptus leucoxylon</i>	Declining. Little to no amenity, < 2 Years ULE.
21.	23A Browns Road	<i>Melaleuca styphelioides</i>	Declining health, 50% canopy loss, < 2 Years ULE.
22.	29 Browns Road	<i>Melaleuca styphelioides</i>	Declining health, 50% canopy loss, < 2 Years ULE.
23.	31-49 Browns Road	<i>Pyrus calleryana</i> 'Chanticleer'	inappropriate location under wire stay.
24.	31-49 Browns Road	<i>Melaleuca styphelioides</i>	Declining health, < 2 Years ULE>
25.	31-49 Browns Road	<i>Corymbia ficifolia</i>	Major wound with bracket fungi at base impacting health and structure, 25% canopy loss, < 2 Years ULE.

Shared Path Construction (SSRIP) and Street Tree Strategy – Browns Road

The table below lists the details of vacant site plantings in Browns Road.

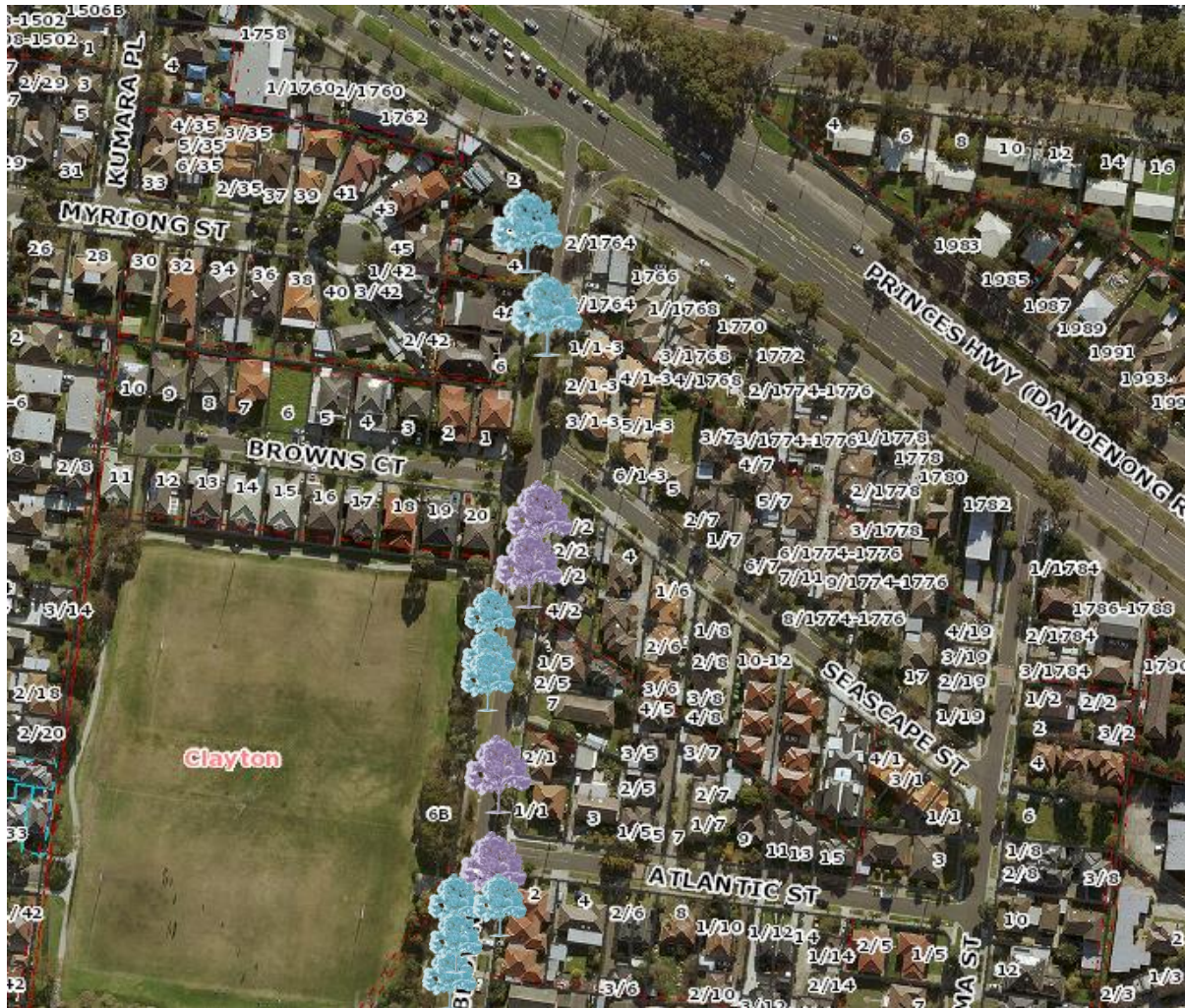
No.	Street Address
1.	106 Browns Road
2.	28 Browns Road
3.	16 Browns Road
4.	MONASH MEDICAL CENTRE CAR PARK 6C Browns Road
5.	4 Browns Road
6.	1/1-3 Seascapes Street in Browns Road
7.	2/2 Atlantic Street in Browns Road
8.	2/1 Fortuna Street in Browns Road
9.	2 Lantana Street in Browns Road
10.	15-17 Browns Road
11.	27 Browns Road
12.	29 Browns Road
13.	29 Browns Road
14.	31-49 Browns Road
15.	31-49 Browns Road
16.	31-49 Browns Road
17.	31-49 Browns Road
18.	31-49 Browns Road
19.	31-49 Browns Road
20.	209-211 Carinish Road in Browns Road
21.	209-211 Carinish Road in Browns Road




*Fregon Reserve will be planted with between 6-10 vacant site plantings, dependant on final species chosen

Shared Path Construction (SSRIP) and Street Tree Strategy – Browns Road

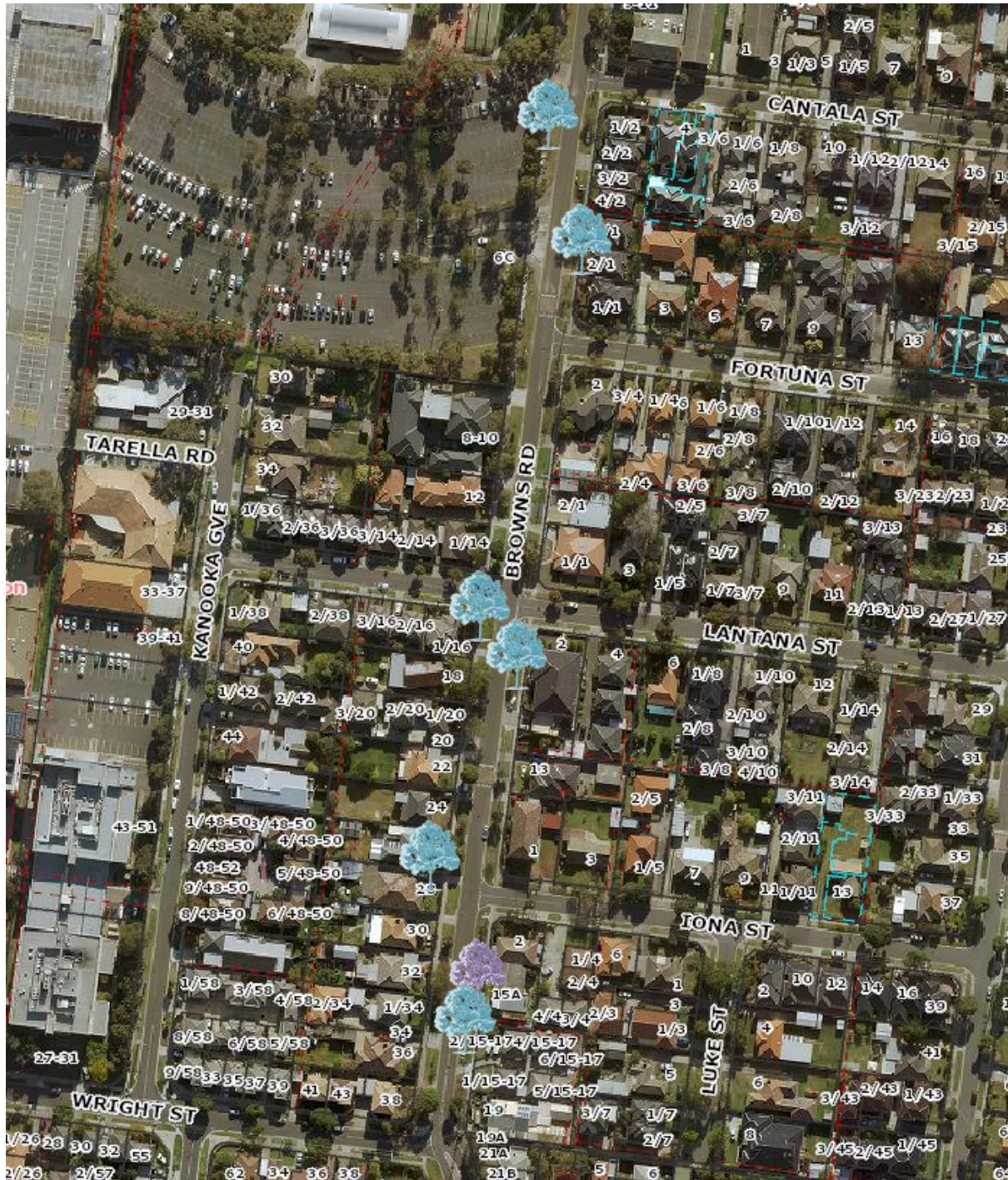
MAP – Removals and Replacements – Street Tree Strategy




The map below details the removals and replacements for the Street Tree Strategy.



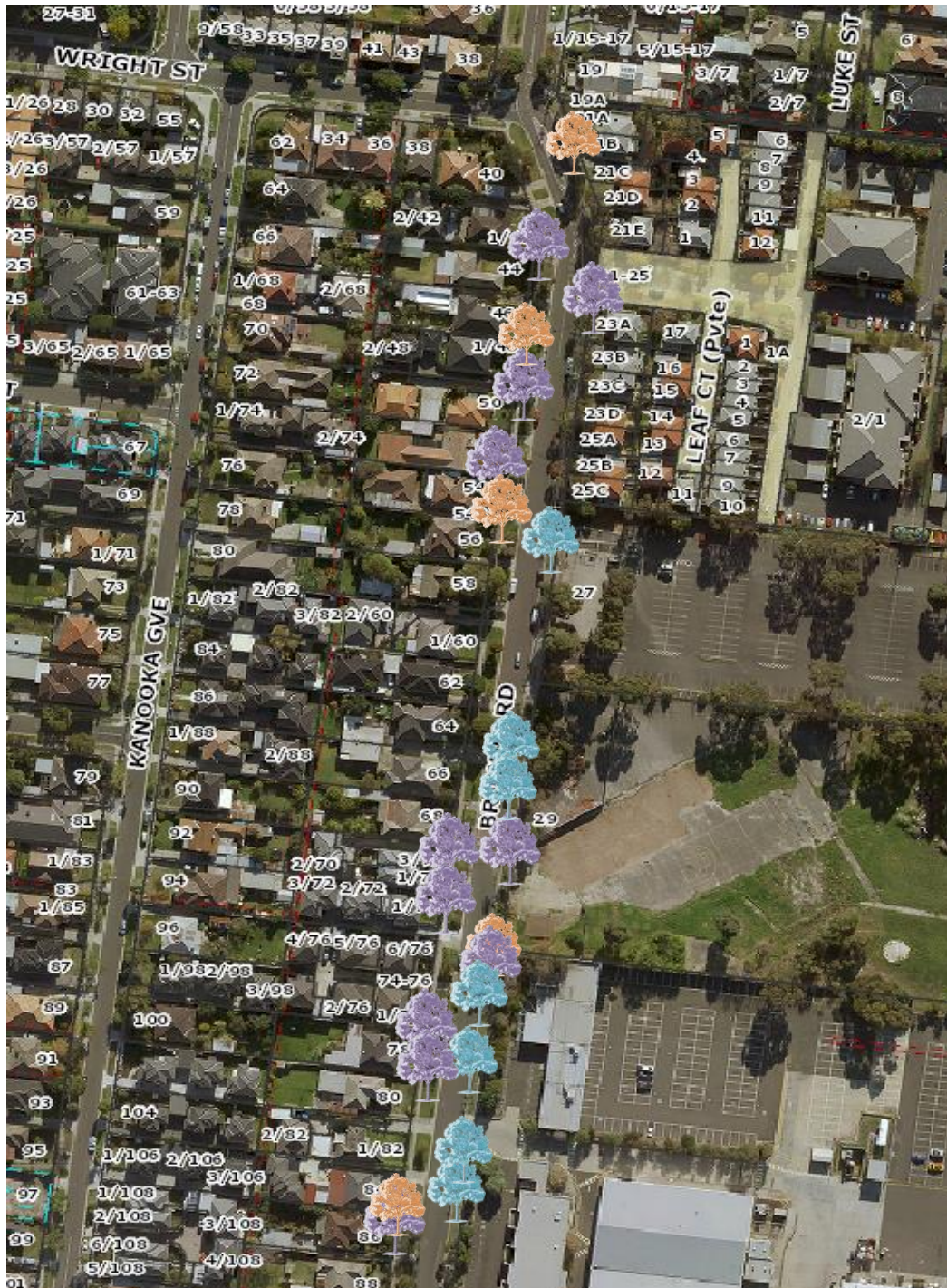
Legend	
	New Tree To be planted
	Tree to be removed and replaced
	Tree to be removed but not replaced




Shared Path Construction (SSRIP) and Street Tree Strategy – Browns Road



Legend	
	New Tree To be planted
	Tree to be removed and replaced
	Tree to be removed but not replaced

Shared Path Construction (SSRIP) and Street Tree Strategy – Browns Road



Legend	
	New Tree To be planted
	Tree to be removed and replaced
	Tree to be removed but not replaced

Shared Path Construction (SSRIP) and Street Tree Strategy – Browns Road

