

Improving your local facilities

As we look ahead to the potential easing of COVID restrictions and returning to playing sport and using community facilities, Council has been planning infrastructure upgrades to improve the liveability of Monash for residents.

These projects include better lighting at sporting reserves, pavilion improvements, sportsground redevelopments and more exciting playspaces. Some of them include:

MULGRAVE RESERVE PAVILION

Upgrades for a modern community facility including four change rooms, a kitchen, upgraded toilets, additional car parking, spectator terracing, landscaping and planting and improved cricket net facilities. The State Government is providing \$2M and Council a further \$2M.

PLAYSPACE UPGRADES

Council's Playground and Playspace Strategy and community consultation have prompted several upgrades over the next year. Rivett Crescent Reserve (Mulgrave), Herriotts Boulevard Reserve (Glen Waverley), Flora Road Reserve (Clayton) and Atheldene Drive Reserve (Glen Waverley) will become more interesting and fun for children to explore, imagine and interact.

TALLY HO RESERVE REDEVELOPMENT

Following an audit of Monash sportsgrounds, Tally Ho Reserve became a priority for upgrade works. The \$1M project includes improvements to drainage, irrigation, surface soil and grass, and a centre cricket wicket.

SPORTSGROUND LIGHTING

Six sportsgrounds will have LED lighting upgrades under the Lighting Up Monash program to improve training conditions and safety. Sports lighting will be improved at Pinewood, Mulgrave, Southern, Capital, Meade and Freeway reserves with \$1.6M via the State Government's Community Sports Infrastructure Stimulus Program. The total cost is \$2.02M.

CARLSON RESERVE IMPROVEMENTS

A staged project at Carlson Reserve (Clayton) includes an improved playground (\$450,000 funded by Council), and a landscaped forecourt area (\$300,000 from the State Government's Park Revitalisation Grant Program).

GLEN WAVERLEY PRECINCT PLAN

Concept and schematic design to commence on the Glen Waverley Civic Precinct Project after completion of the feasibility study. The project will incorporate the expansion of the library, civic hall, workspace and improved public plaza on the current Glen Waverley Library site.

For more info: ☎ 9518 3555
🌐 www.monash.vic.gov.au/council-projects

Information in the October Bulletin is current at the time of going to print on 4 October, however may be subject to change due to COVID-19 restrictions.

The best way to keep up to date about changes to our services is through:
🌐 www.monash.vic.gov.au 📘 @cityofmonash 🐦 @MonashCouncil

KEEPING PARKS mess-free

More people have enjoyed our parks and green spaces during the pandemic, many with their pets.

Unfortunately, Council has also received reports of dog poo left on or near footpaths, parks and sports fields. In some cases, owners have covered it up with playground pine bark.

Council encourages pet owners to show courtesy for others by picking up after their dogs. It also respects the environment, as some droppings contain harmful bacteria.

If dog poo is left in the open and it rains, the bacteria can end up washed down drains and in local creeks.

People who don't pick up after their dogs also risk a \$200 fine.

To make it easier for people to pick up after their dogs, Council has installed dog poo bag dispensers in parks throughout Monash.

For more info: www.monash.vic.gov.au/Picking-up-after-your-dog



ENERGY BOOST for business

'Green' subsidies are helping our businesses save money while becoming more energy efficient.

Monash Council is administering the Business Energy Savers program on behalf of Eastern Alliance for Greenhouse Action (EAGA) councils to support businesses impacted by COVID-19.

The program is helping them upgrade to energy efficient equipment, LED lighting and solar power, to reduce costs and contribute to Victoria's 2050 zero net emissions target.

Small businesses with up to 19 full time equivalent employees can access additional incentives via Sustainability Victoria's Small Business Energy Saver program.

They can apply for a bonus of up to \$2000 each for a range of eligible upgrades. With the

bonus amounts, they can cut installation costs by up to 85-95 per cent. The new equipment can cut annual running costs by 15-25 per cent.

Accredited Providers help registered businesses to manage installation, upgrades and paperwork.

Monash business owners can also apply for the Solar Savers program, which offers rebates of up to 50 per cent (up to \$3,500) off the cost of a solar system.

Register here:

www.businessenergysavers.org

For more info: Szilvia Csanyi, EAGA Business Resilience Officer

szilvia.csanyi@monash.vic.gov.au



Monash Civic Centre

293 Springvale Road
Glen Waverley

CLOSED (due to COVID-19 restrictions)*

*Subject to change. Check the Monash Council website for the latest update.

[9518 3555](tel:95183555) mail@monash.vic.gov.au

www.monash.vic.gov.au

National Relay Service

(for the hearing and speech impaired) 1800 555 660

Oakleigh Service Centre

3 Atherton Road
Oakleigh

CLOSED (due to COVID-19 restrictions)*

We welcome your feedback: [9518 3678](tel:95183678)

joanne.robertson@monash.vic.gov.au

Language Assist

普通话	9321 5485	Ελληνικά	9321 5482
हिंदी	7005 3000	Việt Ngữ	9321 5487
廣東話	9321 5481	සිංහල	7005 3002
தமிழ்	7005 3003	한국어	9321 5484
Italiano	9321 5483	Bahasa Indonesia	7005 3001

Australia Post delays have affected the delivery of some copies the Monash Bulletin. As a result, some households may receive the Bulletin later than Council intends. We apologise for any inconvenience caused.

Copyright © 2021 Monash City Council. All Rights Reserved; reproduction in any form will require Council's written approval.





MESSAGE FROM Mayor Brian Little

As I write this column we continue to be experiencing lockdown restrictions and it has been a gruelling time for all Victorians. The work of many in our community is humbling and deserves recognition, whether it is our community groups that have rallied to provide food parcels and everyday essentials, including medicines, for those impacted by COVID, or our own Council staff who have supported residents in so many ways. I am hoping that these examples of human kindness and compassion are the things we take forward with us when we have the opportunity to re-open and begin to return to our workplaces, schools, community spaces and businesses.

Much of our work during the pandemic has been in supporting local businesses who have been hard-hit by closures and lockdowns. I was pleased to have support from my fellow Councillors at the September

Council meeting for my motion to waive fees on the costs associated with outdoor dining delineators given that many of the outdoor dining areas have been unable to be used. This applies to all periods that lockdowns are in place. It is just another way, along with our waiving of fees and charges for the second consecutive year and our hardship policy, that we are supporting our local traders and community.

The Suburban Rail Loop is a significant project in Monash with three stations to be constructed in locations at Clayton, Monash University and Glen Waverley. Whilst we are working with the Suburban Rail Loop Authority and advocating for the best outcomes for our precincts and our community, your voice is also critical. A story in this issue outlines how you can provide feedback on an Environmental Effects Statement to the SRLA and provide input to our submission. A community meeting is being held on Wednesday 10 November. Please come along to learn more and have your say by registering your interest at shape.monash.vic.gov.au

This month many of our events have had to move online but I have enjoyed launching the Monash Seniors Festival and presenting at the Monash Business Awards and in doing so recognising the terrific contribution of seniors and businesses to our community.

You can contact me on:

9518 3524/0407 878 033

Brian.Little@monash.vic.gov.au

NEXT COUNCIL Meeting

The next Council Meeting will be held on Tuesday **26 October** from 7pm. The meeting's agenda will be published on Council's website from 5.30pm on **Thursday 21 October**.

Monash residents and ratepayers can ask questions to be answered at the meeting; all queries must be submitted to Council by 2pm on Tuesday 26 October.

At the time of going to print the public could not attend Council meetings in person, which is subject to change depending on the COVID-19 situation. The meeting remains a public meeting that the community can watch via our livestreaming service at webcast.monash.vic.gov.au

www.monash.vic.gov.au/meetings

9518 3555

FESTIVAL AND EVENTS season update

Council is committed to delivering safe, innovative and inclusive events and we know these are welcomed and enjoyed by our community.

COVID-19 has impacted significantly on our ability to deliver live events, particularly large scale events. Our priority has always been the safety and wellbeing of the Monash community and our staff, so we have decided for the festive and summer season 2021/22 that our focus will be more smaller events where the community can enjoy being together in smaller numbers.

As part of these changes, Council has made the difficult decision to cancel the Monash Carols by Candlelight event which had been planned for 12 December.

The Christmas spirit will still be alive in Monash with our Christmas program for December 2021 now including great music, lighting activations and daily visits by roving Christmas characters across shopping areas in Monash. We are bringing the festive season to the street and parks and there will be lots to see, do and enjoy in a safe and inclusive way.

In January, a series of performances will be held as part of the Monash Summer Series for small audiences in local areas. This will include a weekly Sunday afternoon music program in local parks. We have previously held similar events and these were very popular with our community.

For more info: www.monash.vic.gov.au/festivals-and-events

9518 3555



HAVE YOUR SAY

Suburban Rail Loop

The Suburban Rail Loop is a 90-kilometre rail line linking every major rail line from the Frankston line to the Werribee line via the airport in a loop, providing improved connections for Victorians to jobs, retail, education, health services and each other. The project is being delivered by the Suburban Rail Loop Authority (SRLA).



Monash Council is included in the first stage of the project known as SRL East, from Cheltenham to Box Hill with stations at Clayton, Monash University and Glen Waverley.

Council is providing input directly to the SRLA on its plans for the rail line particularly around the station precincts and possible environmental impacts. These impacts are part of an Environmental Effects Statement which is put together by SRLA to summarise the development, identify alternatives, analyse the potential impacts and their consequence and provide for public participation in the decision-making process. The statement provides the State Government with information on the impacts of the project to help the government assess whether the project should proceed.

An outline of the EES Process can be found at <https://bit.ly/3oBifyX>

The documents will be available for public consultation from 5 November to 16 December 2021 at suburbanrailloop.vic.gov.au

Council will make a submission during this process and present to the EES review panel. It's important you also have a say in this process. Your feedback will assist in forming our views on the submission we will make.

Our online information session is on Wednesday 10 November 2021.

Register to attend from 5 November 2021 online at shape.monash.vic.gov.au

For more info: ☎ 9518 3555
✉ mail@monash.vic.gov.au

TRIAL ON PROPOSED pedestrian changes

Council will undertake community consultation on a trial of improvements for pedestrians along Chester Street Oakleigh, near Eaton Mall, to curb aggressive driver behaviour.

These improvements include trialling a 20km/ph shared zone on Chester Street (25m east and 33m west of Eaton Mall), road humps along Chester Street and a 30km/ph speed limit in the area bounded by Warrigal Road, Atherton Road, Hanover Street and Portman Street.

The shared zone would give pedestrians the right to share the road space with vehicles. To create a safe space, traffic calming measures

including road marking and road humps would be introduced. The shared space would also include planters, graphics on the road and bollards to reduce traffic speed and give pedestrians more space.

New road humps along Chester Street will help to reduce vehicle speed without impacting on-street parking. The 20km/ph shared zone and 30km/ph speed limit both require Department of Transport approval.

Council will consult with local traders and the community on the proposed changes in early 2022.

For more info: www.monash.vic.gov.au/oakleigh-traffic
☎ 9518 3555 (engineering)

COVID-19 UPDATE and thanks

Thanks for your hard work Monash. Our community has shown amazing resilience so far. We know our businesses and community are doing it tough.

The community has strongly supported vaccinations and we thank you for everything you have done to support each other and work towards the lifting of restrictions.

The State Government now has vaccination targets that will allow restrictions to ease and facilities, local businesses and schools to reopen. They are staged over several months, with single and double dose targets triggering eased restrictions.

Vaccinations are key to all of this. They reduce the risk of getting sick, minimise the effects of the coronavirus in those who have it and help protect people who cannot be vaccinated for health reasons.

COVID-19 vaccines have been developed without compromising quality, safety and effectiveness. They must pass strict Therapeutic Goods Administration standards.

If you are unsure about vaccination, speak to your doctor, especially if you have previously had an allergic reaction to a vaccine.

COVID-19 may cause flu-like symptoms, a cough, fever, headache and fatigue. If in doubt, or you have visited an exposure site, please get tested immediately, isolate at home until you have a result and follow the advice provided.

For more info: www.coronavirus.vic.gov.au

COVID Hotline:
☎ 1800 675 398



GLEN WAVERLEY SPORTS HUB update

Residents have seen an early reference design for Glen Waverley's new public tennis centre in the Glen Waverley Sports Hub.

practice facilities, carparking, landscaping and 50m buffer zone between the tennis centre and adjoining properties.

A Zoom meeting attended by more than 30 residents, and feedback on Council's Shape Monash page, is helping to guide the \$26.77 million Monash Tennis Centre.

Traffic design consultants Quantum Traffic presented the preferred intersection option for the Waverley Road/Jells Road intersection, which the Department of Transport has endorsed as the preferred treatment.

At the 23 September meeting, participants were briefed on progress of the 18-court centre's design and surroundings, as well as proposed development works at the intersection of Jells Road and Waverley Road.

Next steps include site utilisation studies, refinement and definition of the architectural return brief, and further development of the schematic design and site layout.

Lead design consultants Mantric Architecture provided an update on the design phase, including plans for the linear park, new golf and tennis pavilion, golf

For more info:  shape.monash.vic.gov.au/tennis



JOINT COUNCIL STUDY INTO reusable nappies

Monash is among 12 Councils working together to research and understand how to implement a best practice reusable nappy program to reduce waste to landfill.


Led by Monash Council, the Best Practice Reusable Nappy Program – Feasibility Study was awarded up to \$80,000 from Sustainability Victoria, through the Victorian Government's Recycling Victoria Councils Fund.

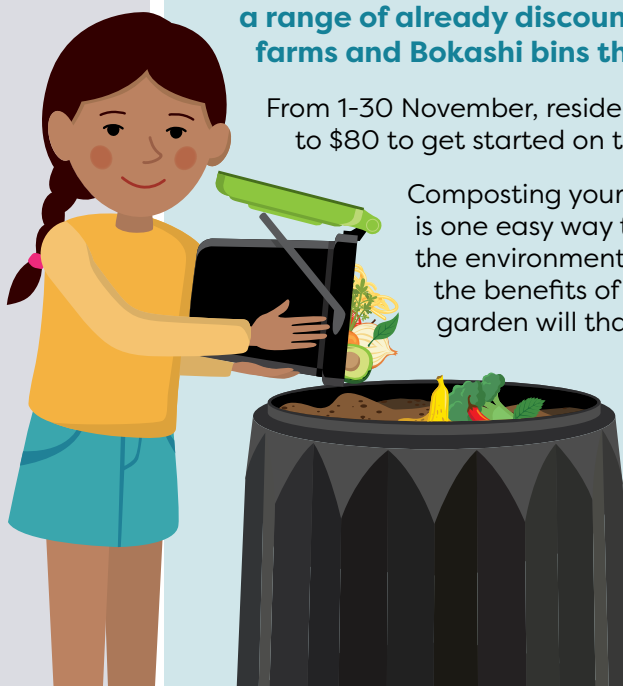
As Councils introduce food waste recycling services, disposable nappies are becoming one of the most significant waste issues, comprising between 5-15 per cent of waste in household bins.

About two billion disposable nappies end up in landfill per year in Australia and it can take up to 500 years for nappies to break down.

The feasibility study will engage with parents, carers and guardians to understand current barriers to using reusable nappies. It will benchmark reusable nappy programs to evaluate their effectiveness in reaching target audiences, meeting family needs, reducing waste and changing behaviour.

The study will recommend a best practice waste reduction model and support families to increase the circular economy and create the basis for behaviour change across Victoria.

For more info:
 www.monash.vic.gov.au/nappy-study




GET COMPOSTING this spring

We're offering Monash residents a double rebate on a range of already discounted compost bins, worm farms and Bokashi bins through Compost Community.

From 1-30 November, residents can receive a rebate* of up to \$80 to get started on their composting journey.

Composting your food scraps and garden waste is one easy way to reduce landfill and protect the environment. Plus, you will get to enjoy the benefits of using your compost, and your garden will thank you for it!

**One rebate available per household, per annum.*

For more info:
 www.compostcommunity.com.au/monash.html

COUNCILLOR NEWS

Cr Stuart James

A lot has changed since I last wrote to you in my final bulletin column as Mayor in October 2020. I am extremely proud of the way our residents and ratepayers came together with Council to face and work through the many challenges that came our way throughout 2020 and 2021.

The availability of vaccines now provides us with an opportunity to get back to a somewhat normal life. I strongly encourage everyone to have a conversation with their doctor about their options and to consider becoming vaccinated.

Last year, Council rolled out our food and organics recycling program. Whilst many in our community have embraced this program, we still have many residents who haven't made the shift. More than 50 per cent of all landfill in Victoria is food and organics and embracing this program is a very simple and easy way for all of us to reduce our impact on the environment. Visit www.monash.vic.gov.au/Food-Waste-Collection

A number of residents have contacted me asking for off-leash fenced dog parks. I'm pleased to advise that Council is working on a plan for several of these across the municipality and hopes to have this ready later this year.

Work continues on substantial enhancements around the Oakleigh Activity Centre, including increasing the pedestrian footprint around Eaton Mall. The first stage is to design and consult on a new shared zone in Chester Street. We are also looking at the feasibility of making some of the temporary outdoor dining sections created in Oakleigh due to COVID restrictions permanent.

Traffic studies and planning are underway on a project to revitalise the Oakleigh Station precinct, a project I have been working on for more than four years. The initial designs are exciting and seek to prioritise pedestrian movement and to better integrate the station precinct with the activity centre.

We will be seeking State Government funding to progress this project in the lead up to next year's State Election and

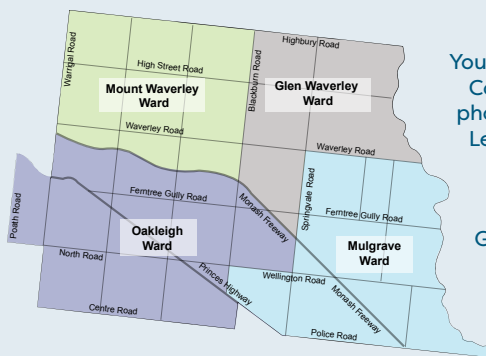
I encourage you to view the plans and reach out to your local State MP to lend your support. Visit www.monash.vic.gov.au/Oakleigh-Public-Transport-Precinct-Proposal

On a personal note, Donna and I welcomed a beautiful baby boy into our family in June. He is absolutely adored by his parents and older sisters.

Feel free to contact me at: [✉ Stuart.James@monash.vic.gov.au](mailto:Stuart.James@monash.vic.gov.au)
[☎ 0413 184 250](tel:0413184250)



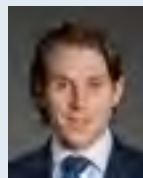
YOUR Councillors



You can contact Councillors via phone or email. Letters can be mailed to:

PO Box 1
Glen Waverley
VIC 3150

Glen Waverley Ward



Cr Geoff Lake
0411 645 281
Geoff.Lake@monash.vic.gov.au



Cr Nicky Luo
0451 560 398
Nicky.Luo@monash.vic.gov.au

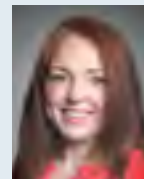
Mount Waverley Ward



Cr Anjalee de Silva
0424 679 096
Anjalee.deSilva@monash.vic.gov.au



**Cr Brian Little
Mayor**
9518 3524 /
0407 878 033
Brian.Little@monash.vic.gov.au



Cr Rebecca Paterson
0437 959 163
Rebecca.Paterson@monash.vic.gov.au

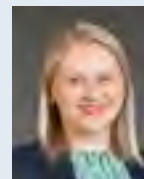
Mulgrave Ward



Cr Paul Klisaris
0412 516 026
Paul.Klisaris@monash.vic.gov.au



**Cr Shane McCluskey
Deputy Mayor**
0466 345 406
Shane.McCluskey@monash.vic.gov.au



Cr Tina Samardzija
0435 011 927
Tina.Samardzija@monash.vic.gov.au

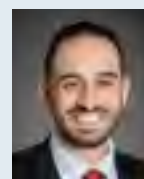
Oakleigh Ward



Cr Josh Fergeus
0466 465 421
Josh.Fergeus@monash.vic.gov.au



Cr Stuart James
0413 184 250
Stuart.James@monash.vic.gov.au



Cr Theo Zographos
0430 316 911
Theo.Zographos@monash.vic.gov.au



GENDER EQUITY for all

Gender inequality affects us all and we want your views on this important topic.

Monash Council has long been committed to and promoted equality in our community and workplace. We aim to ensure that everyone enjoys the same opportunities, rights and respect, regardless of our gender.

Council is well placed to combat gender inequality through the wide

range of services and programs that we provide. With this in mind, we are reviewing our Gender Equity Strategy 2015-2020 to ensure it is relevant and complies with the State Government's Gender Equality Act 2020.

The new Gender Equity Framework will guide our work in that space, so we want to get it right. We hope to hear from people of all genders, and from a range of ages and

cultural backgrounds. This includes people with a disability or caring responsibilities.

The Gender Equity Framework will ensure that our strong commitment is maintained and enhanced.

**Have your say by:
Friday 26 November**
🌐 shape.monash.vic.gov.au/gender-equity

SUPPORT for students

Exam season is in full swing and for many students the countdown to summer holidays has begun!

While some young people may be giddy with feelings of achievement and future hope, others may find themselves struggling with anxiety over academic expectations.

Initial analysis of the 2021 Monash Youth Survey indicates a high level of personal concern for young people in Monash around the topics of education, feeling stress and mental health.

Whether it's exam stress, worry about future study or employment, or simply the transition through education, Monash Youth Services (MYS) are here to support young people in the community.

MYS provides free and confidential support, information and referral for young people aged 10-25 with a significant link to the City of Monash.

To speak with a youth worker:

📞 9518 3900

For more info:

🌐 www.monashyouth.org.au

COMMUNITY CENTRE upgrade design revealed

A State Government Living Libraries Infrastructure Program grant will see Monash Libraries refurbish and upgrade the Mulgrave Library within the Wellington Reserve Community Centre (WRCC).

The revamp incorporates an after-hours returns chute, a quiet reading nook and a larger book collection, including materials in languages other than English for our culturally diverse community.

Monash Libraries are places of connection and this project aims to improve the library space, while retaining the appeal of a small neighbourhood library that feels safe, welcoming and comfortable.

The renovation of the shared e-café area will further support community connections and will feature a contemporary kitchenette.

Work is due to start in November 2021 (COVID-19 restrictions permitting). Parts of the centre will be temporarily impacted during construction, in particular the courtyard and car park, building entrance, library and e-café area. Council is working closely with Mackie Road Neighbourhood House and other WRCC tenants to communicate these impacts.

The library will provide a Click and Collect Service during this period and construction will work around existing programming within other parts of the building.

For more info: 🌐 www.monash.vic.gov.au/wrcc-upgrade

MONASH OPEN Gardens

Sat 6 November, 10am-4pm
(COVID restrictions permitting)

Six varied and interesting gardens will be open for visitors to admire and draw ideas from. Be inspired by the gardens and their owners.

Entry to all gardens is free. Please check-in using the QR code at each home.

For more info and a list of the gardens:

www.waverleygardenclub.com/events

📞 Peter on 0418 110 345.



WHAT HAPPENS TO YOUR Recycling?

Tues 9 November, 6pm-7pm. Online via Zoom

Ever wondered what happens to your recycling once it's been collected? Join us online to find out.

Visy, our recycling contractor, will share how recycling is sorted and recycled into new products once it's collected. Bring a list of questions to be answered.

Bookings essential: www.trybooking.com/BUIKI

WALK & TALK Book Club

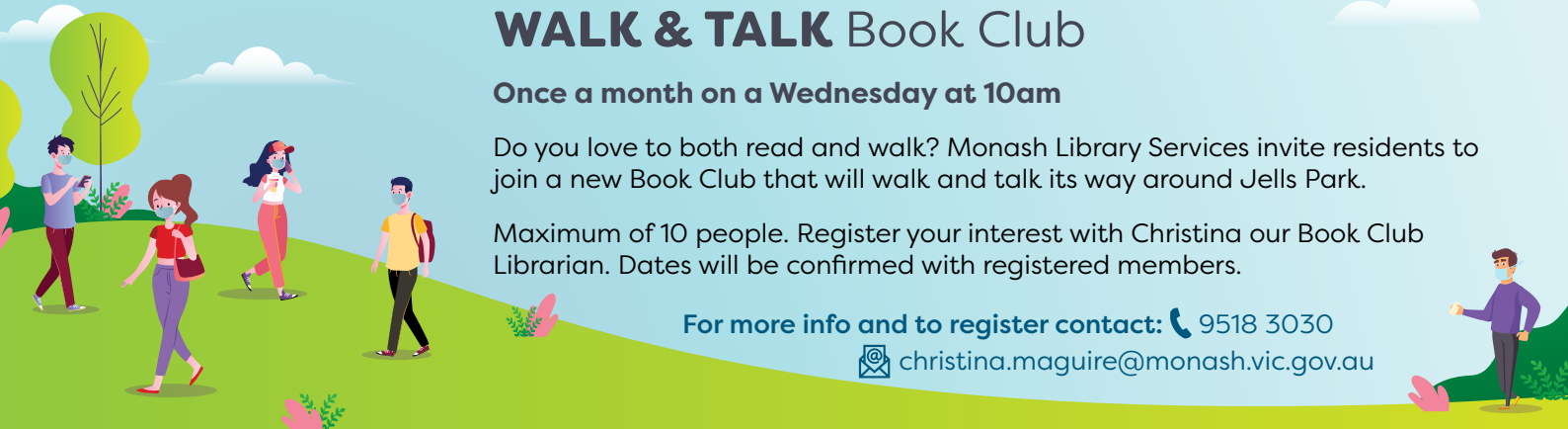
Once a month on a Wednesday at 10am

Do you love to both read and walk? Monash Library Services invite residents to join a new Book Club that will walk and talk its way around Jells Park.

Maximum of 10 people. Register your interest with Christina our Book Club Librarian. Dates will be confirmed with registered members.

For more info and to register contact: 📞 9518 3030

✉️ christina.maguire@monash.vic.gov.au



ADVOCATING for jobs

Looking for work or underemployed? We can help.

The pandemic has affected the employment of many Victorians, who have either lost their jobs, become underemployed or had to change industries.

Jobs Victoria Advocates are coming to Monash with free expert advice to help jobseekers find meaningful employment. If you're looking for work, training, a career change or referrals to other support, an advocate can:

» Connect you to local skills and training opportunities through Work and Learning Centres, TAFE

Skills and Jobs Centres, and apprenticeship programs

- » Refer you to a local Jobs Victoria Partner who can help you update your resume, prepare for job interviews, and connect with local employers
- » Help you apply for local jobs through the Jobs Victoria online hub
- » Refer you to other community services.

COVID-permitting, sessions will start in Monash in November. Venues will include Clayton, Mount Waverley and Oakleigh libraries, youth services in Glen Waverley, and two local shopping centres.



For more info:

www.monash.vic.gov.au/Advocating-for-jobs

www.jobs.vic.gov.au/advocates

