



MONASH Seniors Festival



In celebration of the 40th Victorian Seniors Festival, Council is proud to host a range of events and activities throughout the month of October highlighting our message 'Coming together, stronger than ever'.

The October program is bursting with more than 70 Council and community events encouraging people to stay independent and connected to their community. The festival launches on Monday 3 October with a panel of

inspirational and motivational speakers, including provisional psychologists from Monash University, to emphasise the importance of belonging and being connected and the impact this has on mental and physical health. This event offers a month of opportunities for residents to get out and about and possibly find a new hobby or community group to join.

These include: family-friendly film screening, twilight walk at Valley Reserve, bingo with a twist, bowls day, 1920s cocktail

party, 'come and try' croquet and bridge, morning tea and games day, picnic choir in the park, bus trips, open days, and the Monash Positive Ageing Expo on Sunday 30 October, featuring a fun, informative and interactive Expo including entertainment, information stalls, demonstrations, lawn bowls, community BBQ and more. Bookings essential.

Full program:  www.monash.vic.gov.au/seniors-festival or  9518 3555

Free Public Transport for Victorian Seniors Card holders during the 2022 Victorian Seniors Festival

To help all Victorian Seniors Card holders make the most of the Victorian Seniors Festival, the State Government is providing eight days of free travel on all Victorian public transport from Sunday 2 October to Sunday 9 October. This includes all metropolitan rail, tram and bus services, all V/Line rail and bus services, and all regional town bus services.

Information in the September Bulletin is current at the time of going to print on 1 August.

Keep up-to-date about changes to our services through:



www.monash.vic.gov.au



@cityofmonash



@MonashCouncil



@MonashCouncil

How you rated us in **COMMUNITY SATISFACTION SURVEY**

Monash residents have rated their overall satisfaction with Council as “very good” in the 2022 Community Satisfaction survey, with Monash scoring 7.07/10.

The metropolitan Melbourne average was 6.6. Our understanding is this score puts Monash tracking equal to another council as recording the highest score in metropolitan Melbourne, despite a 3.7% decline from last year’s result.

The survey was undertaken by Metropolis Research of 800 households, by phone rather than in-person due to COVID staff impacts.

Satisfaction in the Local Government Performance Reporting Framework reporting requirements for Monash were:

- » Council’s overall performance (7.07)
- » Maintaining trust and confidence of the local community (6.96)
- » Community engagement and consultation (6.81)
- » Making decisions in the interest of the community (6.83)
- » Responsiveness to local community needs (6.93) and
- » Representation, lobbying and advocacy on behalf of community (6.90).

The highest community satisfaction scores were in the areas of library services (8.4), regular green waste collection (8.2), sports ovals and outdoor sporting facilities (8.1), recreation and aquatic centres (8.08) and the regular garbage collection (8.07). Council-run services for children and families (7.98) and local playground provision and maintenance (7.97) also recorded strong satisfaction scores.

Key issues in this year’s survey were rubbish and waste issues including rubbish collection, traffic management, parking, building (housing, planning and development) and parks (gardens and open spaces) and customer service.

Despite our overall strong performance, we see room for improvement and will be seeking to address the areas of concerns raised by residents and ratepayers as part of the survey.

More info:

www.monash.vic.gov.au/satisfaction-survey

9518 3555

MOON FESTIVAL coming to Monash!

Council is excited to be working with a local community group or not-for-profit organisation to deliver an all-new community-led Moon Festival in September 2022.

The Mid-Autumn Festival, also known as the Moon Festival or Mooncake Festival, is a traditional festival dating back over 3,000 years. It corresponds to mid-September when the moon is at its brightest and fullest size.

The Moon Festival is part of Council’s ongoing commitment to embrace social inclusion, connection, community identity, celebration and the sharing of diversity and understanding.

We’re currently working through the process of bringing on board a community group to manage the delivery of the event, so keep an eye out on Council’s website and social media channels for updates.

www.monash.vic.gov.au/events

Monash Civic Centre

293 Springvale Road
Glen Waverley

8.30am-5pm*

*Check the Monash Council website for the latest update.

9518 3555 mail@monash.vic.gov.au

www.monash.vic.gov.au

NRS (for the hearing and speech impaired) 1800 555 660

For text version of the Monash Bulletin:

www.monash.vic.gov.au/news

Oakleigh Service Centre

3 Atherton Road
Oakleigh

8.30am-5pm*

We welcome your feedback:

media@monash.vic.gov.au

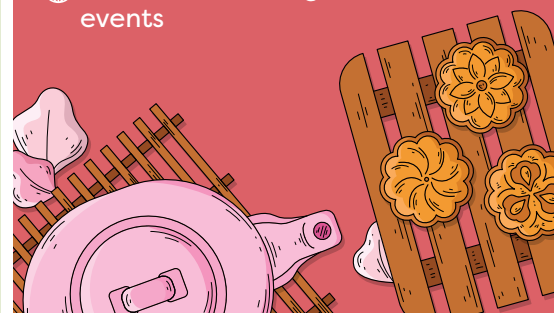
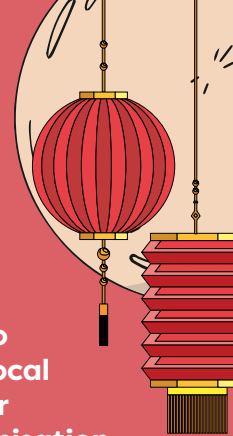
Language Assist

普通话	9321 5485	Ελληνικά	9321 5482
हिंदी	7005 3000	Việt Ngữ	9321 5487
廣東話	9321 5481	සිංහල	7005 3002
தமிழ்	7005 3003	한국어	9321 5484
Italiano	9321 5483	Bahasa Indonesia	7005 3001

Australia Post delays have affected the delivery of some copies of the Monash Bulletin. As a result, some households may receive the Bulletin later than Council intends. We apologise for any inconvenience caused.

Copyright © 2022 Monash City Council. All Rights Reserved; reproduction in any form will require Council’s written approval.

Cover photo by Joe Hepburn on Unsplash.



@



MESSAGE FROM Mayor Stuart James

We've all seen the devastating events occurring recently in Sri Lanka with political upheaval, a failed economy with crippling debt and soaring inflation, and the health system on the verge of collapse. Council, at its July meeting, passed a motion to show solidarity and support to the large Sri Lankan population that we have in the City of Monash, many of whom have family and friends affected. Council stands with them at this difficult time.

In August 2020, Council resolved to implement the Active Monash Sports Club Framework. As part of this policy, clubs are incentivised to meet standards in several key areas: alcohol and drugs, healthy eating, cultural diversity, all-abilities participation, gender equity, environmental impact, amongst others. It is a policy framework that I am extremely proud of, and I thank all our clubs, right across Monash, for the support we have received in implementing some of its objectives.

Recently, I was honoured to be invited to attend Waverley Hockey's inaugural reconciliation round as part of NAIDOC Week. Our sporting

clubs are important community hubs, and it is terrific to see them leading the way in helping to drive societal change in so many areas. Well done to the club executive, players, members and opposition players on a wonderful acknowledgement and smoking ceremony to mark the significant contribution of First Nations People to our land. Council is currently developing a Reconciliation Action Plan which will be released for consultation shortly.

The long anticipated and thoroughly discussed changes to our bin collection services have now occurred. Thank-you to all our residents for playing your part in reducing the impact on our environment, helping to limit the impacts of climate change and in assisting us to leave behind a healthier planet for future generations.

Last month, Council held an information session for residents and businesses in Glen Waverley on plans by the Suburban Rail Loop Authority that will affect the Glen Waverley activity centre and surrounds. Council disagrees with



Photo (L to R): Member for Mt Waverley, Matt Fregon, Mayor Stuart James and Member for Chisholm, Carina Garland with members of the Waverley Hockey Club.

some of the actions proposed and sought the views of our community. We were delighted with the support, with 40 people attending in person and a further 70-plus online. More than 90% of the 700+ submissions to our online survey, and all those who spoke at the forum, supported Council's position and concern that the plans would scuttle our vision for a more pedestrianised Kingsway with less traffic. Thank you to everyone who contributed; we will continue to advocate for better outcomes.

You can read more about this campaign and how to contact the SRL Authority directly at this link [shape.monash.vic.gov.au/srl](https://www.monash.vic.gov.au/srl)

Facebook: [@crstuartjames](https://www.facebook.com/crstuartjames) or follow me on Twitter: [@crstuartjames](https://twitter.com/crstuartjames)
Instagram: [@crstuartjames](https://www.instagram.com/crstuartjames) and join me on the journey.

SWOOPING Season

If you have ever been swooped by a magpie or noisy miner, you can probably vouch for it being a frightening experience.



To protect their nests and young, birds may swoop over the coming months during breeding season. However, it is important to remember that not all birds will display this behaviour.

Top tips to avoid swooping birds:

- » Know the local swooping hotspots
- » Avoid the area
- » Wear sunglasses and a wide-brimmed hat
- » Move quickly and calmly as running may provoke further attack
- » If riding a bike, hop off and walk your bike through the area
- » Travel in groups as birds are more likely to target individuals
- » Do not harass birds as this will only provoke them. Magpies have been known to remember people and attack over successive seasons.

For more info and to see the Victoria Swooping Bird map www.monash.vic.gov.au/swooping-birds

SPECIAL CHARGE to boost the GWAC

Council resolved to declare a special charge for the Glen Waverley Activity Centre, aimed at fostering the commercial viability and business growth of the precinct.

The scheme will include the commercial and retail areas of Kingsway, Coleman Parade, Railway Parade North, Montclair Ave, O'Sullivan Road and Springvale Road, Glen Waverley. The funds will be used for activities and programs to promote shopping in Glen Waverley.

We'll introduce the charge on behalf of the traders group, which will spend the money for marketing, promotions and events over five years. They will then report back to Council on how the funds have been used. Special Rates and Charges are in the *Local Government Act 1989* and are levied against individual rateable properties.

For the full Council report visit: www.monash.vic.gov.au/gwac-special-charge

More info: ☎ 9518 3555

Launch of new POSITIVE AGEING DIRECTORY

Council has released a directory of clubs and community groups specially aimed at older residents.

We have created this directory to enable you to actively explore the services offered within our city. It contains government and not-for-profit services along with local community group listings and is designed to provide you, your family and friends with a wide choice of services and activities to explore further in Monash.

We believe the information is up-to-date, but if you know of a local community group or not-for-profit service which is not listed in the directory, or if any details have changed, please let us know.

The new Positive Ageing Directory is available online on Council's website or you can request a hard copy via the details below.

More info:

 www.monash.vic.gov.au/older-adults

 socialinclusion@monash.vic.gov.au

 9518 3555



SAFER FOR pedestrians in Oakleigh

We are delivering on our plans for several intersection treatments aimed at improving

pedestrian safety in the Oakleigh Activity Centre, with our Safe Pedestrian Project now underway.



The project will prioritise pedestrians at intersections, improve pedestrian protection at existing crossing points and pedestrian/cyclist safety by reducing driver speeds.

A high number of pedestrian incidents had been occurring within the activity centre, resulting in an initial round of safety treatments undertaken in 2017/18 to assist with modifying driver behaviour and to facilitate safe pedestrian crossing locations.

Additional works were required to further improve pedestrian safety in the precinct and we were successful in receiving funding from the Department of Transport Safe Pedestrians Program to achieve that outcome at various intersections within the activity centre.

There'll be new, raised zebra crossings at the intersection of Atherton Road and Drummond Street, and Atherton Road and Palmerston Grove; new road humps along Portman Street and Chester Street; and a roundabout upgrade at Portman and Chester Streets.

Coloured or textured road surfaces to warn drivers of changed road conditions will be carried out at the intersection of Portman and Station Streets, and Burlington and Hanover Streets.

Weather permitting, works are expected to be completed in October.


More info:  shape.monash.vic.gov.au/safe-pedestrian-project-oakleigh

BIN CHANGES underway

The change to Monash's bin collection service has rolled out with food and garden waste (green lid bin) collected weekly and landfill waste (red lid bin) collected fortnightly from 1 August.

There is no change to the recycling (yellow lid) bin dates.

Households have also received a free sample pack of compostable liners for the small food waste caddy.

There's lots of information on our website at  www.monash.vic.gov.au/bin-changes about the new collection, what can go in your bins, how to reduce smells and how to reduce the amount of landfill in your red landfill bin.


Council is offering changes to households who need extra support because they have two or more children in nappies, have medical waste, or have large households and are in financial hardship.

Come to one of our education sessions to learn what can go in

your bins and how to reduce the amount of landfill waste in your landfill (red lid) bin. You can book a one-on-one or family recycling education session. The session will run for 30 minutes on Zoom, at a time convenient for you.

To book:

 mail@monash.vic.gov.au

 9518 3555

Introduction to recycling workshops are also being held via Zoom and in person. **To see more info please refer to page 8.**

INTERSECTION WORKS are underway

As part of the new tennis centre and multisport pavilion project in the Glen Waverley Sports Hub, we've started upgrading the intersection of Waverley Road and Jells Road in Glen Waverley.

The construction works are expected to continue until early-October.

We urge drivers to slow down and be extra cautious when driving through the works area.

The works, carried out in conjunction with the North East Link Project and Department of Transport, will involve installation and commissioning of traffic signals; civil works, including road and pedestrian pavements and modifications; asphalt works; line marking and signage; tree removal and minor landscape works.

The Glen Waverley Sports Hub project includes a new purpose-built golf/tennis pavilion, an 18-court tennis centre, car park and landscaping works.

The intersection upgrade is to cater for the safe movement and operation of increased traffic as a result of the sports hub, especially during peak periods.

We appreciate your cooperation and patience during these upgrade works.

More info:

shape.monash.vic.gov.au/tennis
9518 3555



PARKLAND a generous gift

Residents in Oakleigh South will soon be able to enjoy a new park following the generous bequest of a local resident.

Leon Emile Borelli, who passed away in 2020, has bequeathed part of 9 Coombes Avenue, Oakleigh South to the Council for use as a public reserve. Mr Borelli's parents – Allan and Lisbeth Borelli – purchased the land more than 100 years ago and Mr Borelli's will seeks to recognise his parents through a monument.

The memorial, to be in the form of a granite rock with a plaque, will read:

"This Park was gifted in 2022 in perpetuity to the City of Monash community, by Leon Emile Borelli (1952 – 2020) in memory of his parents Allan and Lisbeth who lived on this land from the early 1900s."

The land currently has a dwelling to the north and an operational nursery at the rear of the property. The dwelling will be demolished and the land will be subdivided to create a lot for the parkland, which will be transferred to Council.

The nursery will remain operational on the rear lot with Mr Borelli's will stipulating that, upon the passing of his wife, the remainder of the land will be gifted to the City of Monash to be incorporated with the bequeathed parkland.

More info:

www.monash.vic.gov.au/bequest-to-council

Nominate for a MONASH ADVISORY COMMITTEE



Are you passionate about social and cultural issues impacting the Monash community? Council is seeking nominations from residents interested in joining one of our advisory committees.

We currently have vacancies on the Multicultural Advisory Committee and the Disability Advisory Committee.

These committees play a vital role in providing community insights, sharing lived experience and offering ongoing feedback on the work of Council. Our committees also help to guide the implementation of the Monash Health and Wellbeing Plan 2021-2025.

If you're a resident with a good understanding of local issues as they relate to people

living with a disability and their carers, or culturally and linguistically diverse communities, we are keen to receive a nomination from you.

Nominations are open from Thursday 1 September to Friday 30 September 2022.

Shortlisted nominees will be required to attend an interview in early October.

For more info and to download a Nomination Form:

www.monash.vic.gov.au/advisory-committees

COUNCILLOR NEWS

Cr Rebecca Paterson

Monash has been spoilt for choice with fantastic events and activities throughout the city this Winter.

Mt Waverley Community Centre gardens were lit up with stunning lanterns and filled with colourful performances in the last weekend of June for the EMERGE festival. It was wonderful to see so many people from our community, of all ages braving the cold nights to experience Winter in a new and exciting way. I would love to see an event like this as a permanent fixture in Mt Waverley, and the gardens around the centre are a bit of a hidden gem and a beautiful place to spend some time no matter the season.



Mt Waverley Community Centre is also home to the Track Gallery and in July the gallery presented an exhibition of works from First Nations artists, with a film screening, concert and a discussion on the first astronomers just some of the other events as we celebrated NAIDOC Week and the history, culture and achievements of our Indigenous communities. The City of Monash is situated on the traditional lands of Wurundjeri Woi Wurrung and Bunurong people.

The Track Gallery has new exhibitions regularly and entry is free, if you're hopping off the train at Mt Waverley or visiting Hamilton Place or the Mt Waverley Library, you are just a couple of minutes' walk away from a fantastic community arts space.

Monash stages a Winter Concert Series with five concerts this year at different locations around the city from Jazz to Pop to Acoustic performances and as usual the events were loved by all who saw them.

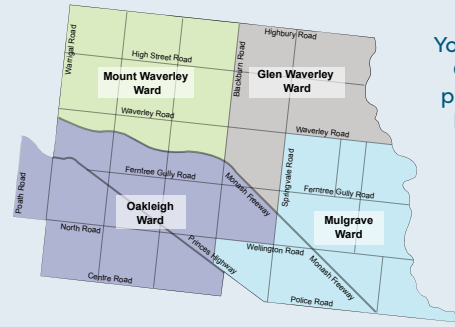
And every June and July I look forward to seeing the amazing program our libraries have put together to celebrate WordFest, our annual literature festival. This year was another inspiring series of talks, writer's workshops and panel discussions from accomplished and celebrated authors.

If you're thinking that any of this sounds like a great way to get out into your community, learn something new, have fun or be inspired then I recommend you subscribe to our events calendar by scanning the QR code.



Feel free to contact me at: ☎ 0437 959 163 or ✉ Rebecca.Paterson@monash.vic.gov.au

YOUR Councillors



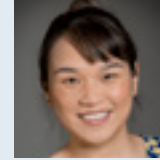
You can contact Councillors via phone or email. Letters can be mailed to:

PO Box 1
Glen Waverley
VIC 3150

Glen Waverley Ward

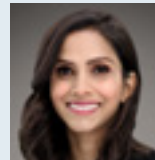


Cr Geoff Lake
0411 645 281
Geoff.Lake@monash.vic.gov.au



Cr Nicky Luo
0451 560 398
Nicky.Luo@monash.vic.gov.au

Mount Waverley Ward



Cr Anjalee de Silva
0424 679 096
Anjalee.deSilva@monash.vic.gov.au

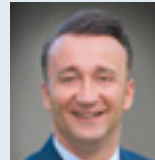


Cr Brian Little
0407 878 033
Brian.Little@monash.vic.gov.au



Cr Rebecca Paterson
0437 959 163
Rebecca.Paterson@monash.vic.gov.au

Mulgrave Ward



Cr Paul Klisaris
0412 516 026
Paul.Klisaris@monash.vic.gov.au

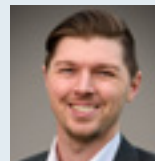


Cr Shane McCluskey
0466 345 406
Shane.McCluskey@monash.vic.gov.au



Cr Tina Samardzija
Deputy Mayor
0435 011 927
Tina.Samardzija@monash.vic.gov.au

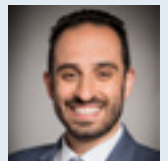
Oakleigh Ward



Cr Josh Fergeus
0466 465 421
Josh.Fergeus@monash.vic.gov.au



Cr Stuart James
Mayor
9518 3524 /
0413 184 250
Stuart.James@monash.vic.gov.au



Cr Theo Zographos
0430 316 911
Theo.Zographos@monash.vic.gov.au

NEXT COUNCIL Meeting

Tuesday 27 September, 7pm
Monash Civic Centre
293 Springvale Rd, Glen Waverley

Attend the meeting in-person or watch it live:
🌐 webcast.monash.vic.gov.au

Meeting agenda and most up-to-date info:
🌐 www.monash.vic.gov.au/meetings

SHARE the Dignity

This August, Council is joining the fight to end period poverty and we need your help.

We're calling for residents to donate brand new and sealed sanitary and period products including pads, tampons, maternity pads, incontinence pads, reusable pads, period underwear, and menstrual cups.

Join the fight and donate in August at 14 Monash Share the Dignity collection bins across all six library branches, our aquatic centres, maternal and child health centres, Monash Civic Centre and more.

Share the Dignity works to make a real difference for those experiencing homelessness, fleeing domestic violence, or doing it tough. Each year it collects period products for charities helping those who menstruate and need support.

Full list:

www.monash.vic.gov.au/share-the-dignity



SAVE THE DATE for our exciting events!

Keep an eye out for our save the date postcards, which will be hitting your mailboxes soon.

- » Event Network - 4 November 2022
- » Family Fun Day - 13 November 2022
- » Carols by Candlelight - 4 December 2022
- » Australia Day - 26 January 2023
- » Clayton Festival - 26 February 2023
- » Live at Warrawee - 18 March 2023

We're also looking for stallholders, performers, food vendors, artists and community groups to register their interest in being involved in our events.

More info:

www.monash.vic.gov.au/festivals
9518 3636

PLANNING AN EVENT in Monash?

Council is proud to support exciting and significant events that celebrate our diverse community. Whether you are organising a public or private event, if it occurs in an outdoor public space anywhere in Monash, you may require approval from Council to deliver the event.

The Arts, Cultural and Events team has developed an Event Guide to assist you with staging successful events and activities within the local area.

This guide is a valuable resource to help plan and deliver safe and successful events in Monash. It

provides a step-by-step process with a range of useful templates, checklists and examples to support your events running safely and smoothly.

Our team aim to provide event organisers with positive advice, knowledge and expertise to ensure that events succeed, while maintaining the safety of our community.

More info:

www.monash.vic.gov.au/planning-an-event
9518 3636

MONASH YOUTH Film Festival

Wed 21 September from 6.30pm

Enjoy a night out and see short film screenings by talented youth on the big screen.

The popular Monash Youth Film Festival will showcase films of all genres at Village Cinemas, Century City, Glen Waverley. Bring your family and friends and vote for your favourite finalist.

Tickets are free and will be available closer to the event. Bookings essential.

Proudly hosted by Monash Youth Services and Quiksound Productions.

More info:


 www.monashyouth.org.au

HABITAT for Home Gardens

Thurs 1 September
6.30pm – 8pm

Find out how to create a beautiful garden with local and Australian plants that also support wildlife with AB Bishop, author, journalist, and horticulturalist, who writes for The Age and Gardening Australia.

AB will bring along plants and explain where they will do best in your garden. Plus learn valuable tips on creating a habitat garden.

 Function Room, Monash Civic Centre,
293 Springvale Rd, Glen Waverley

To book:  9518 3555

 www.monash.vic.gov.au/habitat-for-home-gardens



Introduction to RECYCLING IN MONASH

Knowing what can go in your recycling (yellow) and food and garden waste (green) bins could help reduce the amount of waste in your landfill (red) bin by up to 50%.

Join us for an introduction to recycling workshop and discover what items can go in your household bins and the recycling services available to help keep waste out of landfill.


Online via Zoom


- » Mon 5 September, 6pm - 7pm
- » Thurs 15 September, 7.30pm - 8.30pm

In person - spaces limited

- » **Clayton Library**
Sat 3 September, 10.30am - 12pm
- » **Mount Waverley Community Centre**
Thurs 8 September, 11am - 12.30pm
- » **Civic Centre, Glen Waverley**
Thurs 22 September,
6pm - 7.30pm

To book:

 9518 3555

 www.monash.vic.gov.au/recycling-intro



ACCESS THE LIBRARY anywhere!

We all love traditional print books, but there are plenty of benefits to using Monash Libraries eLibrary to access eBooks, eAudiobooks, and other eLearning resources.

Open 24 hours a day, seven days a week:

- » **BorrowBox** offers eBooks and eAudiobooks for children and adults
- » **uLibrary** offers eAudiobooks for adults
- » **Beamafilm** library members can stream movies and documentaries in high definition for free
- » **LinkedIn Learning** provides quality instructional videos across a multitude of topics for professionals and hobbyists
- » **Resources** for children to develop numeracy, literacy and additional language skills, all in user-friendly web-based interfaces.

Wherever you are, access the eLibrary on your smartphone, tablet or computer, to browse, borrow, watch or learn.

More info:

 www.monlib.vic.gov.au/eLibrary

