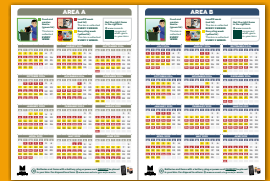


MONASH | JULY 2024

# BULLETIN



**WASTE  
CALENDAR  
2024/25**  
inside this issue



**JACK  
EDWARDS  
RESERVE**  
*we're ready to build*

## INSIDE THIS ISSUE

- Ready to build
- Budget adopted
- Tiny forest planted
- Desilting is vital

# CARLSON RESERVE

## courts a big hit

**T**ennis, futsal, pickleball – Carlson Reserve multi-purpose courts in Clayton Road are serving up something for everyone!

The new public courts include line markings for tennis, netball, basketball, soccer training, futsal and pickleball, as well as court-side LED sports lighting to allow for play at night.

Supported by the Victorian Government, the impressive facility was officially opened on Friday 10 May, with community members eagerly trying out some pickleball.

The project caps off a multi-year, three-stage revitalisation at the reserve, which included a new playground and landscaped forecourt area.

There's more to come, with works underway on Carlson Reserve pavilion and a new mural with designs that reflect the rich cultural diversity of Clayton.

📍 **64-72 Clayton Rd**

🕒 **Weekdays: Sunrise-11pm**  
**Weekends: Sunrise-9pm**



🌐 [www.monash.vic.gov.au/carlson-reserve-open](http://www.monash.vic.gov.au/carlson-reserve-open)

# WORK STARTING

## on Mount Waverley pavilion

**W**e've started building a new two-level sporting pavilion as part of the delivery of the Mount Waverley Reserve Master Plan, following the awarding of the construction tender for the project to Constructive Group at Council's meeting on Tuesday 30 April.

The new pavilion will better accommodate the needs of existing users, including the Waverley Blues Football/Netball Club and Mount Waverley Cricket Club.

**The development works will include:**

- Demolition of the existing pavilion and construction of a new two-level sporting pavilion
- Demolition of the existing public toilet and construction of new public toilet amenities south of the pavilion
- Upgrading of the power supply to the reserve
- Supporting civil infrastructure and landscaping works.

Works started in May and are expected to be completed by mid-2025.



🌐 [shape.monash.vic.gov.au/mount-waverley-reserve-masterplan](http://shape.monash.vic.gov.au/mount-waverley-reserve-masterplan)

## We're going to work

**W**ith shovel striking soil for the first time, construction of the new \$14.73 million two-level pavilion and grandstand at Oakleigh's Jack Edwards Reserve is underway.

Our vision of a game changing facility, at the home of National Premier League's Oakleigh Cannons Football Club, will now start to take a more physical form after Monash Mayor Cr Nicky Luo, Member for Hotham Clare

O'Neil and Member for Oakleigh Steve Dimopoulos officially launched the construction phase of the project at a sod turning event on 17 May.

Cr Theo Zographos, Cr Stuart James and Oakleigh Cannons' Stan Papayiannaris and Kon Kavalakis were also on hand at the construction launch.



🌐 [shape.monash.vic.gov.au/jack-edwards-pavilion](http://shape.monash.vic.gov.au/jack-edwards-pavilion)





# MESSAGE FROM MAYOR Cr Nicky Luo

Where we live matters to us. We value certain things about our neighbourhoods and our community. Planning for what that community looks like in the future is critical – and must be done by Council and residents, together.

This month we are asking for you to share your feedback about what matters to you as we shape our future services and priorities in a renewed Community Vision, Council Plan, Health and Wellbeing Plan, Financial Plan and our 2025/26 Annual Budget.

I would love to see as many of you as possible take part. Consultation with our community is central to what we do at Monash. This is a big project but it's an exciting one too – providing your thoughts on what facilities we should prioritise, how to best support the health and wellbeing of your community and environment, what capital works projects are important to you.

Don't miss this chance to tell us what you think. There are lots of ways to do so – through our online survey, nominating for our community panel or attending one of our listening posts.

We look forward to hearing your ideas to shape a future Monash. Find out more [shape.monash.vic.gov.au/vision](https://www.monash.vic.gov.au/vision)

As always, the Bulletin is jam-packed with news about what is happening in Monash. We are



With the team at the Jack Edwards sod turning.

delighted to have opened the multi-purpose courts at Carlson Reserve, we've started building the Mount Waverley pavilion and turned the first sod on our exciting Jack Edwards two-level pavilion and grandstand.

The results are also in for this year's Community Satisfaction Survey and we are thrilled to have scored 7.3, an improvement on last year's result placing us again as a top performer amongst all Councils in Victoria. Thank you to all who took the time to contribute to the survey. There are also some areas for us to work on and we're grateful for your honest feedback on our performance and where we can improve. I assure you, that work has already begun.

Please contact me anytime if you have any queries or feedback at [✉ Nicky.Luo@monash.vic.gov.au](mailto:Nicky.Luo@monash.vic.gov.au) or [📞 0451 560 398](tel:0451560398)

## THE BUDGET IS LOCKED in for 2024/25

**M**onash Council's budget for the 2024/25 financial year was endorsed by Councillors at their meeting on 28 May – setting the platform for the construction of exciting new community facilities, delivering our programs and services, and maintaining Monash's status as the council with the lowest rates per capita in Victoria.

Highlights include \$10.9M for new soccer facilities at Jack Edwards Reserve in Oakleigh (more on page 2), \$8.7M to implement our Mount Waverley Reserve masterplan, and \$23.1M to extend Bogong Car Park in Glen Waverley. We're also committing \$7.8M on upkeep of our roads, \$7.5M for our footpaths and cycleways, and a lot more.

Thanks to everyone who helped to shape our budget through community consultation, learn more at [www.monash.vic.gov.au/budget](https://www.monash.vic.gov.au/budget)





7 July – 14 July

# NAIDOC Week 2024

NAIDOC Week is celebrated not only in Aboriginal and Torres Strait Islander communities, but by Australians from all walks of life.



[www.monash.vic.gov.au/festivals](http://www.monash.vic.gov.au/festivals)

Marcus Lee Design. Community support and partnerships 2022, commissioned for the City of Monash Reconciliation Action Plan (RAP) 2022-2024, digital art.

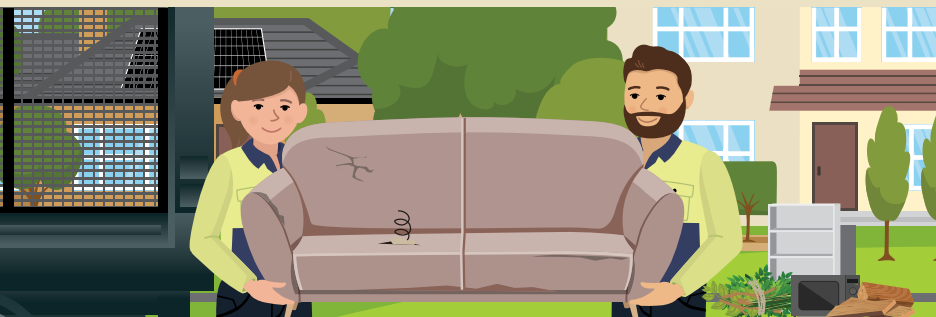
## HARD WASTE collection

15 July to 6 September

Find your hard waste collection week using the 2024/25 waste calendar inserted in this issue. A pamphlet with more details will be delivered to you two weeks before your collection date.

Please note, hard waste dates apply to eligible residential properties only.

[www.monash.vic.gov.au/hard-waste](http://www.monash.vic.gov.au/hard-waste)



## RECYCLING EXCESS waste

**N**eed to dispose of items that aren't accepted for hard waste collection? Check if you can drop them off at Monash Recycling and Waste Centre.

Items accepted at the centre include cardboard, polystyrene (check online for accepted types), soft plastics, light bulbs, batteries, paint, engine and cooking oil, gas bottles, concrete and bricks.

Many items are recycled to increase resource recovery and divert waste from landfill.

🕒 Monday-Sunday, 7.30am-3pm (closed some public holidays)

📍 380 Ferntree Gully Road, Notting Hill

[www.monash.vic.gov.au/recycling-centre](http://www.monash.vic.gov.au/recycling-centre)

*Costs and limits may apply. Fees subject to change from 1 July.*

## WATER SAFETY is everyone's responsibility

**O**n the evening of 25 July, the Glen Waverley Civic Centre will be illuminated in blue as we join people across the world in recognising World Drowning Prevention Day.

We are reminded of the hundreds of Australian families that lose loved ones to drowning every year.

Preventing fatal and non-fatal incidents is possible when we take responsibility for our own safety in and around water by participating in swimming and water safety lessons; understanding the risks and knowing how and when to enter the water safely; supervising children and other vulnerable people in aquatic environments and knowing that this is the responsibility of community, families, friends and carers.

**Read more:**

[www.monash.vic.gov.au/wdprd](http://www.monash.vic.gov.au/wdprd)

**Find out more about swimming and water safety lessons:**

[www.activemonash.vic.gov.au/Adult-Swimming-Lessons](http://www.activemonash.vic.gov.au/Adult-Swimming-Lessons)



Anyone can drown, no one should.



# DESILTING KEEPS the wetlands healthy

**R**ecently, we removed accumulated sediment, litter and debris from the sediment pond at the start of the wetland system in Holmesglen Reserve, improving the visual amenity and environmental health of the wetland.

Desilting works like this are important for restoring the functioning of our wetlands.

The Holmesglen wetland system naturally filters stormwater from the surrounding residential streets, capturing most of the sediment, litter and debris and improving the quality of stormwater runoff before it washes into Gardiners Creek.

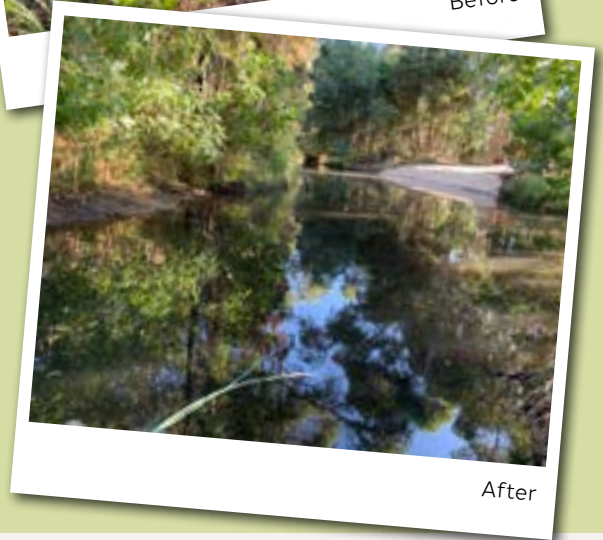
An assessment estimated that the pond at the start of the system was 80 per cent full of sediment and that needed to be removed before it clogged the system.

Monash has more than 40 wetlands and ponds that Council manages, and this includes undertaking desilting periodically.

Find more: [www.monash.vic.gov.au/desilting](http://www.monash.vic.gov.au/desilting)



Before



After

## DEVELOPMENTS on Dover

**M**onash Council is partnering with the Victorian Government on a modern new facility at Dover Street Preschool in Oakleigh East.

Designed to meet the current and future needs of the local community, the project will provide two 33-place kindergarten rooms, staff working areas and a contemporary outdoor learning environment.

Works start mid-July, with the Victorian Government taking temporary possession of the site and managing demolition and construction works.

The new facility is scheduled to welcome a fresh group of young faces in Term 1, 2025.



[shape.monash.vic.gov.au/dover](http://shape.monash.vic.gov.au/dover)

## NEW TINY FOREST in Glen Waverley

**W**e recently held a community planting day, in partnership with Earthwatch Australia and Bupa, to build a Tiny Forest at Fraser Street Reserve, Glen Waverley.

It was a wonderful turnout with around 60 community volunteers and team members helping to plant more than 30 species of indigenous plants.

Tiny Forests are part of a world-wide movement to support afforestation and help introduce dense native forest environments to our urban areas.

The forest will grow to around the size of a tennis court and feature upper, middle, and low storey plantings that will provide new habitat for native birds, butterflies, and other wildlife as well as a place for the community to engage with nature.

The new forest also helps to protect the green garden city character of Monash and plays a role in helping to fulfill our commitment to increase tree canopy cover across Monash to 30% by 2040.

[www.monash.vic.gov.au/tiny-forest](http://www.monash.vic.gov.au/tiny-forest)





## BIG TICK OF SATISFACTION in annual survey

**M**onash has recorded a great result in the annual Community Satisfaction Survey, recording an overall satisfaction score of 7.3, up from last year's 7.18.

The door-to-door survey of 801 includes randomly selected residents across all suburbs of Monash. All Victorian Councils are surveyed to measure community satisfaction with council performance.

While a small number of councils are yet to report on their results, this result places Monash higher than both the metropolitan average (7) and the councils that make up Melbourne's eastern suburbs (7.1) and with Monash likely to be amongst the top 2 ranking councils in the overall results.

**Satisfaction in the Local Government Performance Reporting Framework reporting requirements for Monash were:**

- Council's overall performance (7.3)
- Maintaining trust and confidence of the local community (7.1)
- Community engagement and consultation (7.1)
- Making decisions in the interest of the community (7.1)
- Responsiveness to local community needs (7) and
- Representation, lobbying and advocacy on behalf of community (7.1).

Thank you to everyone who took part in the survey. Your valuable input has helped us identify areas for improvement.


**More info:**  [www.monash.vic.gov.au/satisfaction-survey](http://www.monash.vic.gov.au/satisfaction-survey)


## HAVE YOUR SAY... [shape.monash.vic.gov.au](http://shape.monash.vic.gov.au)



### ...Get involved in our community panel

**W**e're bringing together a community panel who'll represent our Monash community by sharing their ideas for the future of Monash and provide input, feedback and recommendations on our Community Vision, as well as Council strategies and plans for 2025-2029 and beyond.

If this sounds like something you are interested in, visit  [shape.monash.vic.gov.au/vision](http://shape.monash.vic.gov.au/vision) and submit a nomination by 24 June. Panel members will be expected to attend four meetings and be compensated with a \$100 Coles Myer gift card for each session they attend.

If you are interested but can't commit to being part of a panel, visit  [shape.monash.vic.gov.au/vision](http://shape.monash.vic.gov.au/vision) to do our online survey – results of which will be provided to the panel to help inform their discussions.

### ...on planning controls for the Huntingdale Precinct

**C**ouncil is commencing implementing of the Huntingdale Precinct Plan - the long-term vision outlining opportunities to revitalise the activity centre and immediate surrounding areas - through Amendment C173 to the Monash Planning Scheme.

**The amendment includes:**

- New built-form controls
- Minor rezoning of industrial and residential land in the middle of the precinct to commercial and mixed-use zones
- The application of the environmental audit overlay
- A change of residential zone schedule in the residential area
- A new planning policy and minor administrative and policy changes.

The Amendment affects industrial, commercial and residential land within the vicinity of Huntingdale train station.

**Submissions close on Monday, 1 July 2024.**

**More info:**  [shape.monash.vic.gov.au/amendment-c173](http://shape.monash.vic.gov.au/amendment-c173)



# COUNCILLOR NEWS

## Cr Stuart James

I have written several times about my passion for improving services for parents and carers of young children, based on the experiences of my own family. There have been several iterations of playgroups that have morphed out of this work over the years, and, excitingly, the culmination has been the creation of new child and family hubs. These are centres that provide a one-stop-shop for young families; playgroups, kindergartens, maternal child health and specialist services.



I was very proud, as Mayor, to open the first of these in Mulgrave in early 2021, and to be at the opening of our second hub in Pinewood last year. Recently I was excited to be at the opening of the third hub in my own backyard in Oakleigh South and we've started building the fourth in Mount Waverley. If you haven't had a chance to visit one, I urge you to pop your head in.

Two years ago, along with the then local MP, I turned the first sod on the \$26.7M sports hub in Glen Waverley. The project was completed recently, with 18 brand new tennis courts and a new pavilion to be shared by tennis and golf clubs. It is an amazing facility that builds on the \$26M investment in the Oakleigh Recreation Centre redevelopment a few years ago. These two projects, along with tens of millions invested annually in local sports facilities solidifies Monash as the sporting capital of the southeast.

More locally, for me, we're also investing in creating a new sporting precinct in Clayton/Oakleigh East at Carlson Reserve. I was thrilled to join the Deputy Mayor recently to open three new multi-purpose courts that encompass tennis, netball, basketball, soccer, futsal and a newer sport, pickleball (well worth giving that one a go). These courts came off the back of a brand-new playground that was opened in 2022, including an outdoor exercise station, BBQ and picnic tables. Construction is also underway on a brand-new sports pavilion which will open later this year.

And we've also just turned the first sod to begin construction of a \$14.73M multi-purpose sports and community hub at Jack Edwards Reserve in Oakleigh which will serve the Oakleigh Cannons and local community for decades to come.

As the Council with the lowest rates on average in the State, I'm proud of the value we deliver for ratepayers and residents. To find out what's happening locally in your neck of the woods, and to have your say, visit: [🌐 shape.monash.vic.gov.au](https://www.monash.vic.gov.au)

## Next Council Meetings

Tuesday 25 June, 7pm | Tuesday 30 July, 7pm

📍 Monash Civic Centre, 293 Springvale Rd, Glen Waverley

Access meeting agendas and watch in-person or online:

🌐 [www.monash.vic.gov.au/meetings](https://www.monash.vic.gov.au/meetings)

## Your Councillors

### Glen Waverley Ward



**Cr Geoff Lake**  
0411 645 281  
[Geoff.Lake@monash.vic.gov.au](mailto:Geoff.Lake@monash.vic.gov.au)



**Cr Nicky Luo | Mayor**  
9518 3524 | 0451 560 398  
[Nicky.Luo@monash.vic.gov.au](mailto:Nicky.Luo@monash.vic.gov.au)

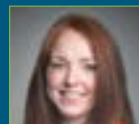
### Mount Waverley Ward



**Cr Anjalee de Silva**  
0424 679 096  
[Anjalee.deSilva@monash.vic.gov.au](mailto:Anjalee.deSilva@monash.vic.gov.au)



**Cr Brian Little | Deputy Mayor**  
0407 878 033  
[Brian.Little@monash.vic.gov.au](mailto:Brian.Little@monash.vic.gov.au)



**Cr Rebecca Paterson**  
0437 959 163  
[Rebecca.Paterson@monash.vic.gov.au](mailto:Rebecca.Paterson@monash.vic.gov.au)

### Mulgrave Ward



**Cr Paul Klisaris**  
0412 516 026  
[Paul.Klisaris@monash.vic.gov.au](mailto:Paul.Klisaris@monash.vic.gov.au)



**Cr Shane McCluskey**  
0466 345 406  
[Shane.McCluskey@monash.vic.gov.au](mailto:Shane.McCluskey@monash.vic.gov.au)



**Cr Tina Samardzija**  
0435 011 927  
[Tina.Samardzija@monash.vic.gov.au](mailto:Tina.Samardzija@monash.vic.gov.au)

### Oakleigh Ward



**Cr Josh Fergeus**  
0466 465 421  
[Josh.Fergeus@monash.vic.gov.au](mailto:Josh.Fergeus@monash.vic.gov.au)



**Cr Stuart James**  
0413 184 250  
[Stuart.James@monash.vic.gov.au](mailto:Stuart.James@monash.vic.gov.au)



**Cr Theo Zographos**  
0430 316 911  
[Theo.Zographos@monash.vic.gov.au](mailto:Theo.Zographos@monash.vic.gov.au)

You can contact councillors via phone or email. Letters can be mailed to:

📧 PO Box 1, Glen Waverley, VIC 3150

🌐 [www.monash.vic.gov.au/councillors](https://www.monash.vic.gov.au/councillors)



# What's on <sup>IN</sup> Monash

## SIGN UP FOR 2024/25

We are seeking expressions of interest for prospective stallholders, food vendors, performers, artists and community groups to be part of our 2024/25 events season. This is an opportunity for established or emerging businesses, community groups and artists to get involved in one of the many community events, programs and workshops we deliver to the Monash community.



We'd love to hear from you!

[www.monash.vic.gov.au/festivals](http://www.monash.vic.gov.au/festivals)



## TUNING in to teens

Tuning in to Teens is a 6-session online program for parents of teenagers and shows you how to help your teen develop emotional intelligence.

**WHEN:** 🕒 Mondays 22 July-26 August (10am-12pm)

**WHERE:** On-line via Zoom  
(link will be sent closer to the date)

**TO REGISTER:** ✉️ [FamilyServices@monash.vic.gov.au](mailto:FamilyServices@monash.vic.gov.au)



## WHAT HAPPENS TO Your Recycling?

Recycling can be confusing. What counts as a 'soft plastic'? Why can't tetra-paks (eg. long-life milk cartons) go in the recycling bin? And where do you take batteries now?

Learn what can and can't go in your yellow-lid recycling bin in our webinar.



**WHEN:** Wed 31 July, 6pm-7pm



<https://events.humanitix.com/what-happens-to-your-recycling-webinar>

## ATO Masterclass

We've partnered with the Australian Taxation Office (ATO) to offer a suite of masterclasses designed to strengthen your small business knowledge. During these free online sessions, you will have the opportunity to speak with experienced tax officers, ask questions and gain insights tailored to your business needs.

- **Starting a small business** | Wed 17 July
- **Goods and Services Tax (GST)** | Tue 30 July
- **Using your business money and assets** | Wed 14 August



Register at:

[www.monash.vic.gov.au/ato-masterclass](http://www.monash.vic.gov.au/ato-masterclass)

## Contact us



🕒 Mon to Fri, 8.30am to 5pm

**Monash Civic Centre** 📍 293 Springvale Rd, Glen Waverley, 3150

**Oakleigh Service Centre** 📍 3 Atherton Rd, Oakleigh, 3166

☎️ 9518 3555 🌐 [www.monash.vic.gov.au](http://www.monash.vic.gov.au) ✉️ [mail@monash.vic.gov.au](mailto:mail@monash.vic.gov.au)

**For text version of the Bulletin:** 🌐 [www.monash.vic.gov.au/news](http://www.monash.vic.gov.au/news)

**We welcome your feedback:** ✉️ [mail@monash.vic.gov.au](mailto:mail@monash.vic.gov.au)

Monash Council acknowledges the Traditional Owners of the land that makes up Monash, the Wurundjeri Woi Wurrung and Bunurong People, and recognises their continuing connection to the land and waterways. We pay our respects to their Elders past, present and emerging and extend this to all Aboriginal and Torres Strait Islander People.



Copyright © 2024 Monash City Council. All Rights Reserved; reproduction in any form will require Council's written approval.

Information in the July Bulletin 2024 is current at the time of going to print on 29 May 2024.

**SNAP SEND SOLVE** is a great app to report to us what needs fixing:

🌐 [www.monash.vic.gov.au/snap-send-solve](http://www.monash.vic.gov.au/snap-send-solve)



### Monash Interpreter Service

普通话	4713 5001	සිංහල	4713 5020
廣東話	4713 5002	தமிழ்	4713 5021
Việt Ngữ	4713 5003	Other languages	4713 5000
Ελληνικά	4713 5004		
हिंदी	4713 5005		
Italiano	4713 5008		
한국어	4713 5010		

